

Ridge Creek


Incident Action Plan



Operational Period
Thursday, August 31, 2023
0600-2200

ID-IPF-000447
P1QG9D (0104)



| | | | |
|--|---|--|-----------------|
| INCIDENT OBJECTIVES | 1. Incident Name Ridge Creek Fire | 2. Date 8/30/23 | 3. Time 2000 |
| 4. Operational Period: 8/31/202 0600 to 8/31/2023 0600 | | | |
| <p>5. General Control Objectives for the Incident</p> <ul style="list-style-type: none"> • Protection of human life is the highest priority. Utilize a deliberative risk management process when mitigating risk to the public and incident resources. Implement actions where there is a high probability of success. • Keep Fire within current planning area with actions based on prioritized Values at Risk. <ul style="list-style-type: none"> Prioritized values are: <ul style="list-style-type: none"> ○ Private property and residences ○ Hayden Creek and Hayden Lake Water Quality ○ Industrial timber lands, plantations, and Bottom Canyon Timber Sales (Idaho Forest Group) and other planned timber sales ○ Bonneville Power Administration Transmission Line ○ Hudlow Warming Hut ○ Chilco Mountain National Recreation Trail • Protect infrastructure, private residences, private inholdings, and businesses within and near the planning area from negative impacts by fire and mitigate smoke impacts when possible. • Coordinate and communicate with all partners, cooperators, stakeholders and forest visitors as appropriate and as needed. Provide accurate and timely information as well as build and maintain the ongoing high trust environment. • Minimize fire and suppression impacts to timber values on private industrial timber lands and National Forest System lands. • Minimize potential fire impacts to critical community infrastructure and follow established management action points / requirements found in the Ridge Creek WFDSS decision. | | | |
| 7. Attachments (mark if attached) | | | |
| <input checked="" type="checkbox"/> Organization List - ICS 203 | <input checked="" type="checkbox"/> Weather Forecast | <input checked="" type="checkbox"/> Messages Safety, Finance | |
| <input checked="" type="checkbox"/> Div. Assignment Lists - ICS 204 | <input checked="" type="checkbox"/> Fire Behavior Forecast | <input checked="" type="checkbox"/> Messages Logs/Plans, READ | |
| <input checked="" type="checkbox"/> Communications Plan - ICS 205 | <input checked="" type="checkbox"/> Incident Map | <input checked="" type="checkbox"/> Transportation Map & Hudlow Directions | |
| <input checked="" type="checkbox"/> Medical Plan - ICS 206 | <input checked="" type="checkbox"/> Air Operations-- ICS 220 | <input checked="" type="checkbox"/> 205a, 206a, 214 | |
| 9. Prepared by (Planning Section Chief) Jessica Hollingsworth - RESL | 9. Approved by (Incident Commander)  | | |

ORGANIZATION ASSIGNMENT LIST (ICS 203)

| | | | | |
|---|---|---|---|-----------------------------------|
| 1. Incident Name: Ridge Creek | | 2. Operational Period Date From: 08/31/23 Date To: 8/31/23 | | |
| | | Time From: 0600 Time To: 2200 | | |
| 3. Incident Commander(s) and Command Staff: | | 7. Operations Section: | | |
| IC/UC's | Deborah Beard | Lead Ops | Jeff Schardt | |
| Deputy | Marshall Bentley | Field Ops | Matt Johnson; Jason Klawinsky (T) | |
| Safety Officer | Buddy Kelley; Larry Holsomback; Danny Gore (T) | Planning Ops | Shawn Nagle; Kris Wilson (T) | |
| Public Info. Officer | Catherine Hibbard; Dick Fleishman; Nate Bogenschutz; Michelle Burnett | Branch Director | Brian Elam | |
| Liaison Officer | Michael Wright; Jeremy Edwardson (T) | DIVISIONS | | |
| 4. Agency/Organization Representatives: | | Division/Group | A/E | Greg Salansky; Jordan Collier (T) |
| Agency/Organization | Name | | | |
| USFS | Randy Swick; Holly Hampton (T) | Division/Group | K | David Gregory; Marshall Myhre (T) |
| IDL | Andrew Smyth; Erik Sjoquist | Division/Group | Z | Heath Thomas |
| Resource Advisors | Will Young | Division/Group | Structure/IA | Jared Nobles; Todd Bennett (T) |
| 5. Planning Section: | | | | |
| Chief | Carol O'Bryan; Kevin Curry(T) | Air Operations Branch | | |
| Deputy | Thomas Barrett | | | |
| Resources Unit | Melonie Sellers; Ethan Robertson; Jessica Hollingsworth (V) | Air Ops Branch Dir | Tim Elder | |
| Status Check-In | Laura Vann | Air Support Supervisor | Nickolas Holschbach; Tim Lanterman (T) | |
| Situation Unit | Clint Roberts; Eric Pullium (T) | 6. Logistics Section: | | |
| Demobilization Unit | Jeff DeMatteis; Wendy Christopher | Chief | Steve Weherley; Tim Exline (T); Todd Waller (T) | |
| Documentation Unit | Lisa Spiess (T) (V) | Deputy | David McVay | |
| Technical Specialists | John Edwards; Yasmir Diaz-Rohweder (T); Bridgette Webb (T) | Communications Unit | David Radzivill; Paul Noa | |
| GIS Specialist | Katherine Bronson; Hester Mallonee (T); Kayla Parr (T) | Medical Unit | Bart Walker; Kurt Gainer | |
| Incident Meteorologist | Ryan Fliehman; Krista Carrothers (T) | Food Unit | James Lowe; Dan Baker (T) | |
| Fire Behavior Analyst | Kelly Cagle | Facilities Unit | Lester Kaiser; Mark Thornton (T) | |
| Training Specialist | Al Hoke (V); Lucas Hunkler (T) (V) | Base Camp Mgr | Kathleen Paiva (T) | |
| 8. Finance/Administration Section: | | Ground Support Unit | Brian Truss (T) | |
| Chief | Jason Gillis; Marlene Hudson (T) | Equipment Managers | Doug Stover (T) | |
| Deputy | Reggie Lanier Jr | Supply Unit | Sandra Rhodes | |
| Time Unit | Donna Bentley (V); Libby Bagwell; Brandon Brown (T) (V) | Ordering Manager | Sherri Kite | |
| Procurement Unit | | Receiving/Distribution | Justin Medley; Randall Hamilton (T) | |
| Comp/Claims Unit | Terri McDonald (V) | Security Manager | David Clark; Christopher Cooley | |
| Cost Unit | Stacey Eaton; Tom Steele | Hudlow Logistics | | |
| | | Base Camp Mgr | David Brooks; Tim Crowell (T) | |
| | | Ground Support Unit | Angela Parrish | |
| | | Equipment Managers | Dwight Henry (T) | |
| 9. Prepared by: Name: <u>Jessica Hollingsworth</u> | | Position/Title: RESL | | <i>Jessica Hollingsworth</i> |
| ICS 203 IAP Page (V) - Virtual | | Signature: Date/Time: 08/30/23 2030hrs | | |



Incident Weather Forecast



FORECAST NO: 22
SHIFT DATE: Thursday 8/31/2023
UNIT: ID Panhandle NF

NAME OF FIRE: Ridge Creek
SIGNED: /s/ Ryan Fliehman IMET Krista Carrothers IMET(t)
ryan.fliehman@noaa.gov / (240) 205-6805

WEATHER DISCUSSION: Temperatures will remain on the cool side of normal for today, but slightly warmer than Wednesday. Peaks of sunshine will be present through the day with a chance of rain showers this afternoon. Precipitation amounts will be light. Minimum humidity will stay high, between 50 and 60 percent, with good overnight recoveries. Friday and Saturday will warm slightly but remain below normal with lighter winds. Winds increase Sunday ahead of the incoming front that arrives overnight. Cooler temperatures and a better chance of precipitation arrives with the frontal passage.

Today's Weather: Slightly warmer and drier. Chance for afternoon rain showers.

| | Ridge Creek Fire | Farragut ICP (2,400ft) |
|------------------------------|---|--|
| TEMPERATURES (Trend): | 60-65° (+6) | 67-72° (+7) |
| HUMIDITY (Trend): | 58-63% (-35%) | 49-54% (-31%) |
| 20 FT WINDS: RIDGETOP | Southwest winds 7-11 gusts 16, decreasing to 5 to 8 mph after 1400. | |
| SLOPE/VALLEY | Southwest winds 3-6 mph with gusts to 11, becoming light. | Southwest winds 4-9 mph, becoming light. |
| MIXING HEIGHT: | 6,500 feet AGL | 6,500 feet AGL |
| STABILITY/INVERSION: | Inversion 7,000 feet, not breaking | Inversion 7,000 feet, not breaking |
| HAINES INDEX (high) | 2 – (Stability 1, Moisture 1) | 2 – (Stability 1, Moisture 1) |
| CHANCE OF RAIN: | 25 | 20 |
| LIGHTNING (LAL): | 1 | 1 |
| RH RECOVERY TONIGHT: | 75+ (Good) | 75%+ (Good) |
| OVERNIGHT WINDS: | Southwest 6-11 mph on ridges, light valley winds. | |

Trend based on yesterday's observed values.

FRIDAY OUTLOOK: Pockets of sunshine will return Friday with a slight warm up from what is seen today. Temperatures rise into the low 70s for the ridges with near 80 in the valleys. Light winds and humidity lowering into the 40 percents is expected.

EXTENDED FORECAST: Saturday will be the warmest day of the forecast period ahead of the next front that will pass late Sunday into Monday. Winds will increase ahead of the frontal passage Sunday with cooler temperatures, breezy winds and the chance for showers expected Monday. Monday is the low point in the forecast with temperatures falling into the 60s.

EXTRA INFORMATION: Coeur d'Alene (2,320ft): High temp: 59°. Low RH: 77%.
Spades IRAWS (4,678ft): High temp: 50°. Low RH: 100%.
MaGee Peak RAWs (4,720ft): High temp: 50°. Low RH: 100%.

Statistic of the Day: Based on the 1.8" of rain that fell at the local weather station, that equates to **219,605,260 gallons** of water on the fire if that much fell over the entire fire.

Please send us your observations! Text photos or obs to the phone number above.

FIRE BEHAVIOR FORECAST

| | |
|---------------------------------|--|
| FORECAST NUMBER: #22 | TYPE OF FIRE: Wildland |
| FIRE NAME: Ridge Creek | OPERATIONAL PERIOD: 8/31/23 Day Shift |
| DATE ISSUED: 08/30/23 | TIME ISSUED: 2000 |
| UNIT: Idaho Panhandle NF | WRITTEN: <i>Kelly Cagle</i> - FBAN |

FUELS: The major fuel type found on the Ridge Creek fire is mixed conifer (fuel models 10/TU1/TU5). There are areas of open canopy conifer with grass and shrub understory on the south and west facing slopes, and there also areas of closed canopy conifer – mostly on the north and east facing slopes. Additionally – areas of subalpine fire are present in the higher elevations. Live fuels have not been a huge driver of fire spread thus far – in fact – they are a bit of a deterrent on north and east facing slopes.

WEATHER SUMMARY: Cloudy and cool weather today with elevated relative humidity values. See fire weather forecast for more specifics.

General Fire Behavior Forecast: Fire behavior is expected to be minimal today. Fuels are wet and expected to remain wet all day. An isolated smoke or smolder might be possible, especially under heavy canopy. Open, spreading flame is not expected.

Critical fire behavior thresholds for Idaho Panhandle NF:
RH below 20% Winds greater than 20 Daytime temp > 80 Haines 5 or 6

Specific:

Division Echo/Alpha – Smoldering in duff or heavy dead/down possible. Any other fire activity unlikely.

Division Kilo – Some heat may remain in the “horseshoe” area from recent burnout. Smoldering or continued consumption of heavy fuel possible. Other fire activity unlikely.

Division Zulu –Smoke or smolder possible. Otherwise minimal fire behavior expected.

Initial Attack – Initial attack unlikely. Minimal fire behavior expected if IA occurs.

| | | | |
|---------------------------------|------|----------------------------|------------------|
| Fine fuel moisture today is - | High | Rates of Spread in Timber- | None |
| Probability of Ignition today - | Low | Rates of Spread in Grass- | None |
| Max Spotting Distance Today- | N/A | Flame Lengths- | Very low to none |

AIR OPERATIONS : Clouds are in the forecast. Short breaks in cloud cover today may allow for limited aviation activities.

FIRE BEHAVIOR SAFETY: Standard firefighting order #6 - “Be alert. Keep calm. Think clearly. Act decisively.” – can be applied to all aspects of firefighting –initial attack, mop up, rehab, staging etc., and not just when fire is actively spreading.

| DIVISION ASSIGNMENT LIST | | | 1. Branch | | 2. Division Div-A/E (Page 1 of 2) | |
|---|---|------------------------------------|---|---------------------|---|---|
| 3. Incident Name RIDGE CREEK | | | Operational Period from: 08/31/2023 0600 To: 08/31/2023 2200 | | | |
| 5. Operations Personnel | | | | | | |
| Field Operations Section Chief | | Matt Johnson Jason Klawinsky(T) | | Branch Director | | Brian Elam |
| Planning Operations Section Chief | | Shawn Nagle Kris Wilson (T) | | Division Supervisor | | Greg Salansky 865-414-6461 Jordon Collier (T) 912-464-9453 |
| 6. Resources Assigned this Period | | | | | | |
| RO# | Strike Team/Task Force/ Resource Designator | Leader | # People | LWD | Drop Off PT./Time | Pick Up PT./Time |
| C-32 | CRW2 T2C316 DUST BUSTERS CREW-13 | Hubbard | 20 | 9/1 | Hudlow/0600 | Hudlow/2200 |
| C-34 | CRW2 Blue Mountain C-2 | Moreno-Esoinoza | 20 | 9/3 | Hudlow/0600 | Hudlow/2200 |
| E-217 | ENG6 Firebrand Forestry | Douglas | 3 | 9/6 | Hudlow/0600 | Hudlow/2200 |
| E-218 | ENG6 Cahoon Contracting LLC | Peterson | 3 | 9/6 | Hudlow/0600 | Hudlow/2200 |
| E-31 | DZR2 Patrick Madden | Foster | 3 | 9/5 | Hudlow /0600 | Hudlow/2200 |
| E-79 | EXC2 J&P Idaho Services | Kitchen | 2 | 9/3 | Hudlow/0600 | Hudlow/2200 |
| E-8 | EXC2 Fousts Inc.-35616 | Gatchell | 1 | 9/9 | Hudlow/0600 | Hudlow/2200 |
| E-32 | EXC2 Altered Aspects LLC | Hess | 2 | 9/6 | Hudlow/0600 | Hudlow/2200 |
| E-7 | GRD1 Fousts Inc. | Kramer | 1 | 9/3 | Hudlow/0600 | Hudlow/2200 |
| E-211 | GRD1 Fousts Inc. | Newcomer | 1 | 9/5 | Hudlow/0600 | Hudlow/2200 |
| E-4 | WTS2 Craig Martin 492771 | Martin | 1 | 9/3 | Hudllow/0600 | Hudlow/2200 |
| 7. Control Operations: Task - Utilize full range of suppression tactics to construct, improve and hold manmade, natural features, and established fire lines for containment within DIV A/E. Purpose - To prevent fire spread east of River road and established containment lines, within DIV A/E. End State - Fire spread remains within established containment lines, preventing fire spread east of FSR 209, south of FSR 406, and minimizing impacts to the Little North River Corridor. | | | | | | |
| 8. Special Instructions: Back haul all water handling equipment. Continue to construct, secure, mop-up, monitor fire lines within DIV A/E. Utilize field maps to drop points, safety zones, and potential helispots. Ensure that communications are functional throughout the entire division. Maintain situational awareness around heavy equipment operations. Ensure all fire lines have established water-bars. Ensure inclement weather exit plan is known and viable. | | | | | | |
| 9. Division/Group Communication Summary | | | | | | |
| Communications Summary | | | | | | |
| Channel | Function | RX Frequency | RX Tone | TX Frequency | TX Tone | |
| 1 TAC 1 | TAC | 168.0500 N | 110.9 | 168.0500 N | 110.9 | |
| 5 TAC 5 | TAC | 166.7750 N | 110.9 | 166.7750 N | 110.9 | |
| 7 MT MONUMENT | CMD | 170.0125 N | 110.9 | 165.2500 N | 110.9 | |
| 8 CEDAR | CMD | 170.9750 N | 110.9 | 168.7000 N | 110.9 | |
| 13 A/G PRI | A/G | 167.1250 N | NONE | 167.1250 N | NONE | |
| 14 A/G SEC | A/G | 166.6125 N | NONE | 166.6125 N | NONE | |
| 16 AIRGUARD | AIRGUARD | 168.6250 N | NONE | 168.6250 N | 110.9 | |
| Prepared by (Resource Unit Ldr) <i>Melanie Sellers</i> | | | | Date 08/30/2023 | Time 2030 | |

| | | | | | | | |
|--|--|-------------------------------------|-----------------|---|--------------------------|---|--------------|
| DIVISION ASSIGNMENT LIST | | | | 1. Branch | | 2. Division DIV- A/E (Page 2 of 2) | |
| 3. Incident Name RIDGE CREEK | | | | 4. Operational Period From: 08/31/2023 0600 To: 8/31/2023 2200 | | | |
| 5. Operations Personnel | | | | | | | |
| Field Operations Section Chief | | Matt Johnson Jason Klawinsky (T) | | Branch Director | | Brian Elam | |
| Planning Operations Section Chief | | Shawn Nagle Kris Wilson (T) | | Division Supervisor | | Greg Salansky 865-414-6461 Jordon Collier (T) 912-464-9453 | |
| RO# | Strike Team/Task Force/ Resource Designator | Leader | # People | LWD | Drop Off PT./Time | Pick Up PT./Time | |
| O-212.68 | TFLD | Holsomback | 1 | 9/4 | Hudlow/0600 | Hudlow/2200 | |
| O-198 | TFLD | Krzym | 1 | 9/6 | Hudlow/0600 | Hudlow/2200 | |
| O-231 | TFLD (T) | Fuentes | 1 | 9/5 | Hudlow/0600 | Hudlow/2200 | |
| O-306 | HEQB | Capobiano | 1 | 9/11 | Hudlow/0600 | Hudlow/2200 | |
| O-312 | HEQB (T) | Bowen | 1 | 9/11 | Hudlow/0600 | Hudlow/2200 | |
| O-166 | HEQB (T) | McGuire | 1 | 9/3 | Hudlow/0600 | Hudlow/2200 | |
| O-212.21 | SOF2 (T) | Gray | 1 | 9/3 | Hudlow/0600 | Hudlow/2200 | |
| O-232 | SOFR | Foco | 1 | 9/5 | Hudlow/0600 | udlow/2200 | |
| O-244 | REMS Ranger MT Rescue | Lahti | 4 | 9/6 | Hudlow/0600 | Hudlow/2200 | |
| O-221 | EMPF | Ratti | 1 | 9/4 | Hudlow/0600 | Hudlow/2200 | |
| O-224 | EMTF | Roy | 1 | 9/3 | Hudlow/0600 | Hudlow/2200 | |
| E-122 | AMB1 ALS-ID881N Idaho Falls FD # 847 | Wood | 2 | 9/9 | Hudlow/0600 | Hudlow/2200 | |
| 7. Control Operations: | | | | | | | |
| Task - Utilize full range of suppression tactics to construct, improve and hold manmade, natural features, and established fire lines for containment within DIV A/E. | | | | | | | |
| Purpose - To prevent fire spread east of River road and established containment lines, within DIV A/E. | | | | | | | |
| End State - Fire spread remains within established containment lines, preventing fire spread east of FSR 209, south of FSR 406, and minimizing impacts to the Little North River Corridor. | | | | | | | |
| 8. Special Instructions: | | | | | | | |
| Back haul all water handling equipment. | | | | | | | |
| Continue to construct, secure, mop-up, monitor fire lines within DIV A/E. | | | | | | | |
| Utilize field maps to drop points, safety zones, and potential helispots. | | | | | | | |
| Ensure that communications are functional throughout the entire division. | | | | | | | |
| Maintain situational awareness around heavy equipment operations. | | | | | | | |
| Ensure all fire lines have established water-bars. | | | | | | | |
| Ensure inclement weather exit plan is known and viable. | | | | | | | |
| 9. Division/Group Communication Summary | | | | | | | |
| Communications Summary | | | | | | | |
| Channel | Function | RX Frequency | RX Tone | | TX Frequency | TX Tone | |
| 1 TAC 1 | TAC | 168.0500 N | 110.9 | | 168.0500 N | 110.9 | |
| 5 TAC 5 | TAC | 166.7750 N | 110.9 | | 166.7750 N | 110.9 | |
| 7 MT MONUMENT | CMD | 170.0125 N | 110.9 | | 165.2500 N | 110.9 | |
| 8 CEDAR | CMD | 170.9750 N | 110.9 | | 168.7000 N | 110.9 | |
| 13 A/G PRI | A/G | 167.1250 N | NONE | | 167.1250 N | NONE | |
| 14 A/G SEC | A/G | 166.6125 N | NONE | | 166.6125 N | NONE | |
| 16 AIRGUARD | AIRGUARD | 168.6250 N | NONE | | 168.6250 N | 110.9 | |
| Prepared by (Resource Unit Ldr) <i>Melanie Sellers</i> | | | | | Date 08/30/2023 | | Time 2030 |

| DIVISION ASSIGNMENT LIST | | | 1. Branch | | 2. Division DIV- K | |
|--|---|-------------------------------------|---|---------------------|------------------------------|---|
| 3. Incident Name RIDGE CREEK | | | 4. Operational Period From: 08/31/2023 0600 To: 8/31/2023 2200 | | | |
| 5. Operations Personnel | | | | | | |
| Field Operations Section Chief | | Matt Johnson Jason Klawinsky (T) | | Branch Director | | |
| Planning Operations Section Chief | | Shawn Nagle Kris Wilson (T) | | Division Supervisor | | David Gregory 208-784-3711 Marshall Myhre (T) 208-819-5126 |
| 6. Resources Assigned this Period | | | | | | |
| RO# | Strike Team/Task Force/ Resource Designator | Leader | # People | LWD | Drop Off PT./Time | Pick Up PT./Time |
| C-36 | Type 2 IA MOCC Interagency Crew 4 | Hedges | 19 | 9/08 | ICP/0600 | ICP/2200 |
| E-2 | EXC2 Fousts Inc. 35653 | Kramer | 1 | 9/1 | ICP/0600 | ICP/2200 |
| E-214 | CHP2 The American Firefighter Co | Gwin | 3 | 9/6 | ICP/0600 | ICP/2200 |
| O-200 | TFLD | Doyle | 1 | 9/1 | ICP/0600 | ICP/2200 |
| O-277 | SOF2 | McRae | 1 | 9/10 | ICP/0600 | ICP/2200 |
| O-172 | EMPF North Forks Medics | Wallace | 1 | 9/5 | ICP/0600 | ICP/2200 |
| 7. Control Operations: Task - Utilize full range of suppression tactics to construct fireline, improve roads, handlines, and natural features for use as control lines. Purpose - To prevent fire spread to the west and north of Bunco Road and limit fire impacts to the Sage Creek Area and private and Forest Service Boundaries End State- Limited fire impacts to private and industry timber lands. | | | | | | |
| 8. Special Instructions: Back haul all water handling equipment. Continue Prep along Bunco Rd , improve handline, and continue to assess opportunity's to change tactics when necessary. Utilize field maps for drop points, safety zones, and potential heliports Ensure that communications are functional throughout the entire division Ensure all fire lines have established water-bars. Ensure inclement weather exit plan is known and viable. | | | | | | |
| 9. Division/Group Communication Summary | | | | | | |
| Communications Summary | | | | | | |
| Channel | Function | RX Frequency | RX Tone | TX Frequency | TX Tone | |
| 2 TAC 2 | TAC | 168.2000 N | 110.9 | 168.2000 N | 110.9 | |
| 7 MT MONUMENT | CMD | 170.0125 N | 110.9 | 165.2500 N | 110.9 | |
| 8 CEDAR | CMD | 170.9750 N | 110.9 | 168.7000 N | 110.9 | |
| 13 A/G PRI | A/G | 167.1250 N | NONE | 167.1250 N | NONE | |
| 14 A/G SEC | A/G | 166.6125 N | NONE | 166.6125 N | NONE | |
| 16 AIRGUARD | AIRGUARD | 168.6250 N | NONE | 168.6250 N | 110.9 | |
| Prepared by (Resource Unit Ldr) <i>Jessica Hollingsworth</i> | | | | Date 08/30/2023 | Time 2030 | |

| DIVISION ASSIGNMENT LIST | | | 1. Branch | | 2. Division DIV-Z | |
|--|---|---|--|---------------------------|-----------------------------|----------------------------------|
| 3. Incident Name RIDGE CREEK | | | 4. Operational Period From: 08/31/2023 0600 To: 8/31/2023 2200 | | | |
| 5. Operations Personnel | | | | | | |
| Field Operations Section Chief | | Matt Johnson Jason Klawinsky (T) | | Branch Director | | |
| Planning Operations Section Chief | | Shawn Nagle Kris Wilson (T) | | Division Supervisor | | Heath Thomas 501-208-7077 |
| 6. Resources Assigned this Period | | | | | | |
| RO# | Strike Team/Task Force/ Resource Designator | Leader | # People | LWD | Drop Off PT./Time | Pick Up PT./Time |
| C-33 | CRW2 Dust Busters Crew 15 | Hazen-Baker | 20 | 9/1 | ICP/0600 | ICP/2200 |
| E-78 | EXC Fousts Inc. | Unruh | 1 | 9/8 | ICP/0600 | ICP/2200 |
| E-60 | DUMP Joe Hester Logging | Irvine | 1 | 9/4 | ICP/0600 | ICP/2200 |
| E-61 | FRNT Joe Hester Logging | Heffener | 1 | 9/4 | ICP/0600 | ICP/2200 |
| E-212 | Chipper | Schopp | 3 | 9/6 | ICP/0600 | ICP/2200 |
| O-163 | TFLD | Berger | 1 | 9/5 | ICP/0600 | ICP/2200 |
| O-183 | TFLD (T) | Wilson | 1 | 9/7 | ICP/0600 | ICP/2200 |
| O-170 | HEQB | Courson | 1 | 9/3 | ICP/0600 | ICP/2200 |
| O-138 | SOFR(T) | Canning | 1 | 9/4 | ICP/0600 | ICP/2200 |
| O-210 | EMTF | Dowd | 1 | 9/6 | ICP/0600 | ICP/2200 |
| E-80 | RAT MESU Kootenal Fire & Rescue | Wagner | 2 | 9/6 | ICP/0600 | ICP/2200 |
| E-155 | AMB1 ALS Boundary | Rinella | 2 | 9/7 | ICP/0600 | ICP/2200 |
| 7. Control Operations: Task - Mop-up, patrol, and secure fire lines utilizing full range of suppression actions throughout the Division. Purpose - To prevent fire spread outside of current fire control lines. End State - Fire spread is limited to the north and east of FSR206 and Hayden Creek Road. | | | | | | |
| 8. Special Instructions: Back haul all water handling equipment. Secure fire-line from the heal to north to division break. Utilize field maps for drop points, safety zones, and potential helispots Ensure that comms are functional throughout the entire division. Maintain Situational Awareness around heavy equipment operations. Ensure all fire lines have established water-bars. Ensure inclement weather exit plan is known and viable. | | | | | | |
| Communications Summary | | | | | | |
| Channel | Function | RX Frequency | RX Tone | TX Frequency | TX Tone | |
| 3 TAC 3 | TAC | 168.6000 N | 110.9 | 168.6000 N | 110.9 | |
| 7 MT MONUMENT | CMD | 170.0125 N | 110.9 | 165.2500 N | 110.9 | |
| 8 CEDAR | CMD | 170.9750 N | 110.9 | 168.7000 N | 110.9 | |
| 13 A/G PRI | A/G | 167.1250 N | NONE | 167.1250 N | NONE | |
| 14 A/G SEC | A/G | 166.6125 N | NONE | 166.6125 N | NONE | |
| 16 AIRGUARD | AIRGUARD | 168.6250 N | NONE | 168.6250 N | 110.9 | |
| Prepared by (Resource Unit Ldr) <i>Ethan Robertson</i> | | | | Date 08/30/2023 | Time 1900 | |

| DIVISION ASSIGNMENT LIST | | | 1. Branch | 2. Division Structure / IA | | |
|---|---|---|--|--------------------------------------|-------------------|--|
| 3. Incident Name RIDGE CREEK | | | 4. Operational Period From: 08/31/2023 0600 To: 8/31/2023 2200 | | | |
| 5. Operations Personnel | | | | | | |
| Field Operations Section Chief | | Matt Johnson Jason Klawinsky (T) | | Branch Director | | |
| Planning Operations Section Chief | | Shawn Nagle Kris Wilson (T) | | Division Supervisor | | Jared Nobles 352-817-6915 Todd Bennett (T) 864-429-6058 |
| 6. Resources Assigned this Period | | | | | | |
| RO# | Strike Team/Task Force/ Resource Designator | Leader | # People | LWD | Drop Off PT./Time | Pick Up PT./Time |
| Local | CRW Coeur d'Alene River | Hill | 16 | NA | ICP/0600 | ICP/2200 |
| Local | ENG6 IPFID 641 | White | 4 | NA | ICP/0600 | ICP/2200 |
| E-159 | ENG6 DaRoche | Daroche | 3 | 9/6 | ICP/0600 | ICP/2200 |
| E-179 | ENG Mervin Bishop C83845 | Kirkaldie | 3 | 9/1 | ICP/0600 | ICP/2200 |
| E-180 | ENG6 Mervin Bishop A98810 | Lamebull | 3 | 9/1 | ICP/0600 | ICP/2200 |
| E-181 | ENG6 Mervin Bishop C84111 | Horse Capture | 3 | 9/1 | ICP/0600 | ICP/2200 |
| E-174 | ENG6 Starkcorp Inc. B40745 | Stark | 3 | 9/2 | ICP/0600 | ICP/2200 |
| E-3 | WTT2 ST Florian | Phillips | 1 | 9/2 | ICP/0600 | ICP/2200 |
| O-204 | STEN | McAhren | 1 | 9/2 | ICP/0600 | ICP/2200 |
| O-199 | TFLD | Teague | 1 | 9/1 | ICP/0600 | ICP/2200 |
| O-311 | TFLD | Johnson | 1 | 9/7 | ICP/0600 | ICP/2200 |
| O-223 | AEMF | Haas | 1 | 9/6 | ICP/0600 | ICP/2200 |
| 7. Control Operations: TASK: Identify, Implement and coordinate structure protection needs with fire resources and interagency cooperators within the fire area. Maintain Initial Response capabilities for any new starts within TFR. PURPOSE: Develop, and prioritize a cohesive strategy to implement structure protection. Suppress new fire starts within the TFR. END STATE: Structures are protected with minimum impacts to communities. New Fire starts are suppressed. | | | | | | |
| 8. Special Instructions: Back haul all water handling equipment. Coordinate with cooperators to build a strategic protection assessment of the surrounding communities, maintain presence in communities. Identify trigger points for engagement and disengagement of structure protection resources. Serve as Initial Response resource under the Ridge Creek TFR and adjacent properties as requested. Support divisions with resources as needed while maintaining Initial Response availability. Ensure all fire lines have established water-bars. Ensure inclement weather exit plan is known and viable. | | | | | | |
| 9. Division/Group Communication Summary | | | | | | |
| Communications Summary | | | | | | |
| Channel | Function | RX Frequency | RX Tone | TX Frequency | TX Tone | |
| 4 TAC 4 | TAC | 166.7250 N | 110.9 | 166.7250 N | 110.9 | |
| 7 MT MONUMENT | CMD | 170.0125 N | 110.9 | 165.2500 N | 110.9 | |
| 8 CEDAR | CMD | 170.9750 N | 110.9 | 168.7000 N | 110.9 | |
| 13 A/G PRI | A/G | 167.1250 N | NONE | 167.1250 N | NONE | |
| 14 A/G SEC | A/G | 166.6125 N | NONE | 166.6125 N | NONE | |
| 16 AIRGUARD | AIRGUARD | 168.6250 N | NONE | 168.6250 N | 110.9 | |
| Prepared by (Resource Unit Ldr) <i>Ethan Robertson</i> | | | | Date 08/30/2023 | Time 2030 | |

HEALTH AND SAFETY MESSAGE

SAFETY is YOU& ME

We are ALL accountable for SAFE behaviors

INCIDENT: Ridge Creek Fire

DATE: August 31, 2023

Major Hazards and Risks: Communication, Fatigue, Hazard Trees, Demob

Communication- As the transition takes place, the need to effectively communicate on the fire is important. Take personal responsibility to ensure that people you interact with know what they need to know. Heavy equipment will continue to operate on the fireline so communication will remain vital to all resources that are working around equipment.

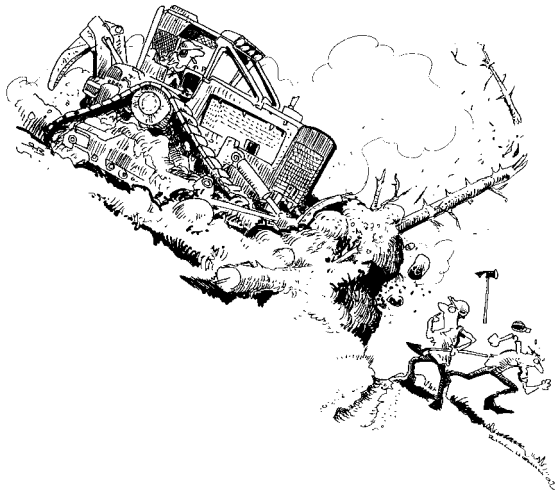
Fatigue- It has been a long fire season. Most of you have been on multiple deployments. Remember to take care of yourself and your assigned resources. Always remember to hydrate and don't skip meals.

Hazard Trees- Trees throughout the incident have been falling on a regular basis. Keep your situational awareness. Be aware that green trees have shallow root systems and can fall at any time, not just the fire charred trees. Recent rain and wet soil with windy conditions, can also lead to an increase in falling trees.

Demob- Remember, your assignment doesn't end when you leave the incident. Your last mission is to get home safely.

SAFETY

Safety is an attitude based on awareness of your environment and capabilities .Decision making (at all levels) represents one human characteristic that can greatly influence your safety and effectiveness. All personnel are responsible for adhering to safe practices & correcting violations. Complacency can lead to an increase in mistakes and accidents.



5. UNINFORMED ON STRATEGY, TACTICS AND HAZARDS

Incident Safety Officers: Buddy Kelley (SOF1), Larry Holsomback(SOF2), Danny Gore(SOF2T)

Controlled Unclassified Information/Basic

ICS 205

| INCIDENT RADIO COMMUNICATIONS PLAN | | | Incident Name RIDGE CREEK | | | Date/Time Prepared: 8/30/2023 / 1630 | | | Operational Period Date/Time From: 8/31/2023 / 0600 To: 8/31/2023 / 2200 | |
|--|---------------|---|-------------------------------------|----------------|--|--|-------------|--|--|--|
| Ch # | Function | Channel Name/Trunked Radio System Talkgroup | Assignment | RX Freq N or W | RX Tone/NAC | TX Freq N or W | Tx Tone/NAC | Mode | Remarks | |
| 1 | TACTICAL | TAC 1 | DIV. A / E | 168.0500 N | 110.9 | 168.0500 N | 110.9 | A | HISTORIC DIV. A | |
| 2 | TACTICAL | TAC 2 | DIV. K | 168.2000 N | 110.9 | 168.2000 N | 110.9 | A | | |
| 3 | TACTICAL | TAC 3 | DIV. Z | 168.6000 N | 110.9 | 168.6000 N | 110.9 | A | | |
| 4 | TACTICAL | TAC 4 | STRUCTURE / IA | 166.7250 N | 110.9 | 166.7250 N | 110.9 | A | | |
| 5 | TACTICAL | TAC 5 | DIV. A / E | 166.7750 N | 110.9 | 166.7750 N | 110.9 | A | HISTORIC DIV. E | |
| 6 | TACTICAL | FIRE TAC | IA | 168.7250 N | 107.2 | 168.7250 N | 107.2 | A | IPNF FIRE TAC / INITIAL ATTACK | |
| 7 | COMMAND | MT MONUMENT | ALL DIVISIONS | 170.0125 N | 110.9 | 165.2500 N | 110.9 | A | LINKED COMMAND | |
| 8 | COMMAND | CEDAR | ALL DIVISIONS | 170.9750 N | 110.9 | 168.7000 N | 110.9 | A | LINKED COMMAND | |
| 9 | IA | FS-LTL GARD | IA | 169.9250 N | 107.2 | 165.5625 N | 156.7 | A | IA – OUTSIDE TFR | |
| 10 | IA | FS-MICA | IA | 169.9250 N | 107.2 | 165.5625 N | 167.9 | A | IA – OUTSIDE TFR | |
| 11 | IA | FS-MONUMENT | IA | 169.9250 N | 107.2 | 165.5625 N | 131.8 | A | IA – OUTSIDE TFR | |
| 12 | UNASSIGNED | A/G MARINE | ---- | ---- | ---- | ---- | ---- | ---- | NOT FOR USE | |
| 13 | AIR TO GROUND | A/G PRI | ALL DIVISIONS | 167.1250 N | NONE | 167.1250 N | NONE | A | AIR TO GROUND PRIMARY | |
| 14 | AIR TO GROUND | A/G SEC | ALL DIVISIONS | 166.6125 N | NONE | 166.6125 N | NONE | A | AIR TO GROUND SECONDARY | |
| 15 | MEDIVAC | EMS | ALL DIVISIONS | 155.2800 N | NONE | 155.2800 N | 156.7 | A | AIR EVAC COORDINATION | |
| 16 | AIR GUARD | AIRGUARD | ALL DIVISIONS | 168.6250 N | NONE | 168.6250 N | 110.9 | A | AIR GUARD | |
| 5. Prepared by: (Communications Unit) Dave Radzivill, COML | | | | | Incident Location: ID-IPF County/State: KOOTENAI COUNTY, ID | | | Latitude / Longitude: 47° 57.9998', -116° 34.9786' | | |

The convention calls for frequency lists to show four digits after the decimal place, followed by either an “N” or a “W”, depending on whether the frequency is narrow or wide band. Mode refers to either “A” or “D” indicating analog or digital (Project 25).

***** Special Instructions: Use Human Repeater When Necessary.**

**To initiate an IWI, contact RIDGE CREEK COMMUNICATIONS on “CEDAR” OR “MONUMENT” (Channel “7” OR “8”)
RIDGE CREEK COMMUNICATIONS - Cell (208) 891-6392**

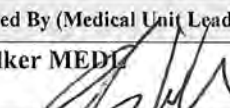

MEDICAL PLAN (ICS 206 WF)

Controlled Unclassified Information//Basic

| | | | | | | | |
|---|---|---|--|--|-------------------------------------|-------------------------------------|--|
| 1. Incident/Project Name | | 2. Operational Period | | | | | |
| Ridge Creek Fire | | Date/Time 0600 – 2200 | | 8/31/2023 to 8/31/2023 | | | |
| 3. Ambulance Services | | | | | | | |
| Name | Complete Address | Phone & EMS Frequency | Advanced Life Support (ALS) Yes No | | | | |
| Timber Lake Fire Protection | 5984 E Highway 54 Athol, ID non-emergency: (208) 683-3333 | 911 | <input type="checkbox"/> | <input checked="" type="checkbox"/> | | | |
| Kootenai County Fire Rescue | 1590 E Seltice Way, Post Falls, ID non-emergency # (208)666-5676 | 911 | <input checked="" type="checkbox"/> | <input type="checkbox"/> | | | |
| 4. Air Ambulance Services | | | | | | | |
| Name | Phone | Type of Aircraft & Capability | | | | | |
| Life Flight | (208)772-3283 USFS dispatch | Hayden or Sandpoint ID ; goes through USFS dispatch to request and coordinate (note min LZ 100'x 100' days) | | | | | |
| Short Haul or Hoist/Agency Helo | (208)772-3283 USFS dispatch | USFS Coeur d Alene Dispatch Note – A2G for helicopter evac is Ch 15 'EMS' | | | | | |
| 5. Hospitals | | | | | | | |
| Name Complete Address | GPS Datum – WGS 84 Coordinate Standard Degrees Decimal Minutes | Travel Time Air Gnd | | Phone | Helipad Yes No | Level of Care Facility | |
| Kootenai General Hospital 2003 Kootenai Health Way, Coeur d'Alene, ID | Lat: 47 45.658 N | 15 min | 30 min | 208-625-4000 | <input checked="" type="checkbox"/> | <input type="checkbox"/> | Level 2 Trauma |
| | Long: 116 47 41.684W | | | | | | |
| Bonner General Hospital 520 N Third Ave, Sandpoint, ID | Lat: 48 16.650 | 15 min | 60 min | 208-263-1441 | <input checked="" type="checkbox"/> | <input type="checkbox"/> | Level 4 Trauma |
| | Long: 116 32.92 | | | | | | |
| Sacred Heart Medical 101 W Eighth Ave, Spokane, WA | Lat: 47 38.500 | 25 min | 120 min | 509-474-3131 | <input checked="" type="checkbox"/> | <input type="checkbox"/> | Level 2 Trauma |
| | Long: 117 24.800 | | | | | | |
| Harborview Medical Center Seattle, WA | Lat: 47 36.238 | 120 min | 300 min | 206-744-3074 206-744-5735 Burn center # | <input checked="" type="checkbox"/> | <input type="checkbox"/> | Level 1 Trauma & Burn Center |
| | Long: 122 19.461 | | | | | | |
| Northwest Urgent Care 7173 E Super 1 Loop Suite A Athol, ID Intersection of 54 & 95 | Lat: 47.950879 Long: -116.694570 (NO HELIPAD) | | 10 min | 208-561-9970 | <input type="checkbox"/> | <input checked="" type="checkbox"/> | Urgent care only Hours: 0800-1800 M-F 0800-1600 S-S |
| 6. Division Branch Group | | Area Location Capability | | | | | |
| A/E | Resources assigned this period | RO# | Designator | Leader | # Crew | Phone | |
| | | 0-244 | REMS Ranger MT Rescue | Lahti | 4 | (360) 908-3314 | |
| | | 0-221 | EMPF | Ratti | 1 | (775) 815-4217 | |
| | | 0-224 | EMTF | Roy | 1 | (707) 508-9620 | |
| | | E-122 | Amb1 ALS-ID88IN Idaho Falls FD #847 | Wood | 2 | (208) 520-3695 | |
| | EMS Responders & Capability: | | ALS Ambulance, REMS, and single resource EMPF, EMTF | | | | |
| | Medical Emergency Channel: | | Cedar Peak | | | | |
| | ETA for Ambulance to Scene: | | Air : 30 min ground 10 min to former A/Z break | | | | |
| | Approved helispots | | H 70: same as DP70, needs dust abatement, clear vehicles, type 3 only H 74: south DP73, type 1 capable H 90: perimeter near DP 95, dust abatement needed, type 3 only H 50: in the BLACK/fire interior, type 3 only H 65: along 206 road N, type 3 currently H 68 north of spike camp ,type 2 | | | | |

MEDICAL PLAN (ICS 206 WF)

Controlled Unclassified Information//Basic

| | | | | | | |
|---|---|--|-----------------------------------|---------|---------------|----------------|
| K | Resources assigned this period: | RO# | Designator | Leader | # Crew | Phone |
| | | 0-172 | EMPF North Forks Medics | Wallace | 1 | (406) 239-1811 |
| | EMS Responders & Capability: | Single resource EMPF | | | | |
| | Equipment Available at Scene: | | | | | |
| | Medical Emergency Channel | Cedar Peak | | | | |
| | ETA for Ambulance | Air : 30 min 45 min ground | | | | |
| Approved Helispot Lat: Long: | H 44: Near DP 44, dust abatement needed, vehicles clear, type 2 H 48: type 3 currently | | | | | |
| Z | Resources assigned this period: | RO# | Designator | Leader | # Crew | Phone |
| | | 0-210 | EMTF | Dowd | 1 | (970) 231-1796 |
| | | E-80 | RAT MESU Kootenai Fire and Rescue | Wagner | 2 | (208) 659-3693 |
| | | E-155 | Amb1 ALS Boundary | Rinella | 2 | (208) 715-5038 |
| | EMS Responders & Capability: | RAT, ALS Ambulance, single resource EMTF | | | | |
| | Equipment Available on Scene: | | | | | |
| Medical Emergency Channel: | Cedar Peak | | | | | |
| ETA for Ambulance to Scene: | Air 30 min ground 10 min to K/Z break | | | | | |
| Approved Helispot: | H 1: Near ICP, two type2 or one type 1 H 10: Hayden Creek Staging, dust abatement needed, watch for FOD, type 1 H 36: private, no LUA, type 1 H 37: repeater site, type 3 only H 44: near DP44, dust abatement needed, vehicles cleared, type 2 | | | | | |
| Structure Protection/ IA | Resources assigned this period: | RO# | Designator | Leader | # Crew | Phone |
| | | 0-223 | AEMF | Haas | 1 | (406) 579-2951 |
| | EMS Responders & Capability: | Single resource AEMT | | | | |
| | Equipment Available on Scene: | | | | | |
| | Medical Emergency Channel: | MT Monument or Cedar Peak (varies by location) | | | | |
| | ETA for Ambulance to Scene: | Varies by location | | | | |
| Approved Helispot: | | | | | | |
| 7. Prepared By (Medical Unit Leader) | 8. Date/Time | 9. Reviewed By (Safety Officer) | | | 10. Date/Time | |
| Bart Walker MED1  | 08/30/23 1650 | Larry Holsom back SOE2  | | | 8/30/23 1700 | |

Ridge Creek Fire Contact List

| Common Name | First Name | Last Name | Primary Phone | Common Name | First Name | Last Name | Primary Phone |
|---------------------------------------|-------------|---------------|---------------|-------------------------------------|------------|------------|---------------|
| INCIDENT COMMANDER | Deborah | Beard | 850-524-9966 | Operations | | | |
| INCIDENT COMMANDER | Marshall | Bentley | 423-584-1682 | OPERATIONS SECTION CHIEF | Matt | Johnson | 870-415-0185 |
| LIAISON OFFICER | Michael | Wright | 970-819-2890 | OPERATIONS SECTION CHIEF | Jason | Klawinsky | 936-520-8827 |
| LIAISON OFFICER | Jeremy | Edwardson | 228-933-2585 | OPERATIONS SECTION CHIEF | Jeffrey | Schardt | 706-280-5498 |
| PUBLIC INFORMATION OFFICER | Catherine | Hibbard | 413-412-2959 | OPERATIONS SECTION CHIEF | Shawn | Nagle | 662-231-4024 |
| PUBLIC INFORMATION OFFICER | Dick | Fleishman | 928-853-4489 | OPERATIONS SECTION CHIEF | Kris | Wilson | 918-314-7264 |
| PUBLIC INFORMATION OFFICER | Nate | Bogenschutz | 801-244-0932 | OPERATIONS BRANCH DIRECTOR | Brian | Elam | 336-467-7254 |
| PUBLIC INFORMATION OFFICER | Michelle | Burnett | 803-920-6167 | AIR OPERATIONS BRANCH DIRECTOR | Timothy | Elder | 863-243-1438 |
| SAFETY OFFICER | Larry | Holsomback | 706 280 4716 | AIR SUPPORT GROUP SUPERVISOR | Nicholas | Holschbach | 406-925-1737 |
| SAFETY OFFICER | Buddy | Kelley | 850-447-1344 | AIR SUPPORT GROUP SUPERVISOR | Timothy | Lanterman | 386-292-4049 |
| SAFETY OFFICER | Danny | Gore | 478-456-8516 | DIVISION SUPERVISOR (A/E) | Greg | Salansky | 865-414-6461 |
| Plans | | | | DIVISION SUPERVISOR (A/E) | Jordan | Collier | 765-913-0790 |
| PLANNING SECTION CHIEF | Carol | O'Bryan | 903-263-8704 | DIVISION SUPERVISOR (K) | David | Gregory | 208-784-3711 |
| PLANNING SECTION CHIEF | Thomas | Barrett | 478-550-6372 | DIVISION SUPERVISOR (K) | Marshall | Myhre | 208-819-5126 |
| PLANNING SECTION CHIEF | Kevin | Curry | 732-684-2999 | DIVISION SUPERVISOR (Z) | Heath | Thomas | 501-208-7077 |
| FIRE BEHAVIOR ANALYST | Kelly | Cagle | 336-302-0343 | DIVISION SUPERVISOR (Z) | Jeremy | Joseph | 586-489-6967 |
| INCIDENT METEROLOGIST | Ryan | Fliehman | 740-525-1697 | DIVISION SUPERVISOR (Structure/IA) | Jared | Nobles | 352-817-6915 |
| INCIDENT METEROLOGIST | Krista | Carrothers | 509-688-4753 | DIVISION SUPERVISOR (Structure/IA) | Todd | Bennett | 864-429-6058 |
| DEMOBILIZATION UNIT LEADER | Jeffrey | DeMatteis | 208-891-6074 | HELIBASE MANAGER | Joshua | Bardwell | 903-238-3453 |
| DEMOBILIZATION UNIT LEADER | Wendy | Christopher | 208-571-0336 | Logistics | | | |
| INCIDENT TECHNICAL SUPPORT SPECIALIST | John | Edwards | 850-766-3393 | LOGISTICS SECTION CHIEF | Steve | Weherley | 850-691-5923 |
| INCIDENT TECHNICAL SUPPORT SPECIALIST | Yarmir Diaz | Rohweder | 936-219-9898 | LOGISTICS SECTION CHIEF | David | McVay | 850-381-1669 |
| INCIDENT TECHNICAL SUPPORT SPECIALIST | Bridgette | Webb | 662-202-6210 | LOGISTICS SECTION CHIEF | Timothy | Exline | 727-243-4144 |
| DOCUMENTATION UNIT LEADER - V | Lisa | Spiess | 601-812-7819 | LOGISTICS SECTION CHIEF | Todd | Waller | 501-337-6308 |
| TRAINING SPECIALIST -V | Alton | Hoke | 678-232-7107 | MEDICAL UNIT LEADER | Kurt | Gainer | 304-704-2970 |
| TRAINING SPECIALIST - V | Lucas | Hunkler | 912-464-7067 | MEDICAL UNIT LEADER | Bart | Walker | 352-203-9191 |
| RESOURCE UNIT LEADER | Melonie | Sellers | 601-508-8997 | FACILITIES UNIT LEADER | Lester | Kaiser | 620-382-6180 |
| RESOURCE UNIT LEADER - V | Jessica | Hollingsworth | 601-966-0331 | FACILITIES UNIT LEADER | Mark | Thornton | 509-683-3746 |
| RESOURCE UNIT LEADER | Ethan | Robertson | 678-552-7342 | BASE CAMP MANGER | Kathleen | Paiva | 775-527-4516 |
| STATUS CHECK-IN RECORDER | Laura | Vann | 404-626-7244 | BASE CAMP MANGER (HUDLOW) | David | Brooks | 303-495-4660 |
| SITUATION UNIT LEADER | Clint | Roberts | 601--408-4276 | BASE CAMP MANGER (HUDLOW) | Tim | Crowell | 270-836-6320 |
| SITUATION UNIT LEADER | Eric | Pullium | 828-644-8966 | SUPPLY UNIT LEADER | Sandra | Rhodes | 501-282-0085 |
| GIS SPECIALIST | Katherine | Bronson | 352-408-3695 | RECEIVING/DISTRIBUTION MANAGER | Randall | Hamilton | 606-344-9628 |
| GIS SPECIALIST | Hester | Mallonee | 662-426-2423 | ORDERING MANAGER | Sherri | Kite | 850-209-2150 |
| GIS SPECIALIST | Kayla | Parr | 937-902-9193 | FOOD UNIT LEADER | James | Lowe | 540-529-0784 |
| Finance | | | | FOOD UNIT LEADER | Dan | Baker | 719-205-0076 |
| FINANCE SECTION CHIEF | Jason | Gillis | 912-314-9233 | COMMUNICATIONS UNIT LEADER | David | Radzivil | 954-553-6553 |
| FINANCE SECTION CHIEF | Marlene | Hudson | 803-563-3277 | GROUND SUPPORT UNIT LEADER | Brian | Truss | 936-546-4338 |
| FINANCE SECTION CHIEF | Reggie | Lanier Jr | 912-314-1085 | GROUND SUPPORT UNIT LEADER (HUDLOW) | Angela | Parrish | 540-553-6356 |
| TIME UNIT LEADER - V | Donna | Bentley | 706-474-3216 | EQUIPMENT MANGER | Doug | Stover | 541-297-5902 |
| TIME UNIT LEADER - V | Brandon | Brown | 423-557-3490 | | | | |
| COST UNIT LEADER | Stacey | Eaton | 850-544-0438 | | | | |
| COST UNIT LEADER | Tom | Steele | 770-363-3583 | | | | |
| COMPENSATION/CLAIMS UNIT LDR - V | Terri | McDonald | 352-454-5385 | | | | |

V - Virtual

Human Resource Message

The mission of the Gold Team is to safely, effectively and efficiently manage the Ridge Creek Fire by maintaining a team of skilled and productive personnel. During this incident we will strive to successfully complete our mission and achieve our objectives while creating a positive, work environment for all assigned incident personnel. Consumption of drugs that alter decision making abilities on the job, such as marijuana and alcohol, is prohibited. The Gold Team fully supports every assigned personnel's right to have a safe and enjoyable assignment. ANY form of harassment or discrimination will not be tolerated. All inappropriate behavior will be dealt with promptly. Disciplinary action and reporting back to an individual's home unit will be initiated as necessary.

Please report any incidents of inappropriate behavior to your supervisor or any member of the Gold Team

Debbie Beard, Incident Commander



Finance Message

THINGS TO REMEMBER

- IF YOU ARE ASSIGNED TO "DIVISION K", PLEASE NOTE THIS IN THE REMARKS ON YOUR CTR'S OR SHIFT TICKETS
- PLEASE ENSURE THAT YOUR CTR'S AND SHIFT TICKETS HAVE YOUR RESOURCE ORDER NUMBER and DATE

FOR ASSISTANCE WITH CLAIMS, PLEASE CONTACT TERRI MCDONALD AT terri_mcdonald@firenet.gov, or leave a voice mail at 352-454-5385.

2023.ridgecreek.finance@firenet.gov



ALL RESOURCES ARE WELCOME TO HAVE A IN-PERSON FINANCE DEMOB

But if you prefer remote Finance demob, please follow directions below

****** REMOTE DEMOB FOR HUDLOW SPIKE CAMP ******

ANY RESOURCES WANTING TO REMOTE DEMOB FROM HUDLOW SPIKE CAMP,
PLEASE SEE ITSS - JOHN EDWARDS, LOCATED ON SITE IN ITSS-YURK.
RESOURCES CAN DEMOB ANYTIME BETWEEN 1000 TO 1400.

****** REMOTE DEMOB FOR BASE CAMP ******

PLEASE SCAN THE QR CODE ABOVE. SEND AN EMAIL WITH YOUR CONTACT INFORMATION REQUESTING REMOTE DEMOB. A FINANCE SPECIALIST WILL CALL YOU BACK AND WALK YOU THROUGH THE PROCESS.

Limited contact Demob process is Available

- **Note your demob date listed in the IAP. Inform your incident supervisor if that date is wrong, so they can contact demob/checkin to update.**
- Crew Swaps - If you have relief operators replacing operators, use the QR code below. We will adjust the last work day for that equipment.
- Air Travel – Use the QR code below or call demob to schedule a flight. Please do this at least 3 days before your demob date. You may need to plan on an early departure on your last work day for an RON at your departure airport in order to travel on your DEMOB date.
- Driving home – Use the QR code below to provide travel info before leaving ICP to travel home. **We need you to provide your ETD/ETA, and RON city, if taking more than one day to drive home.**

Steps to take when checking out during Demob, no checkout sheet required:

Feel free to stop by any Section or Unit if you need assistance.

1. All CTR and Shift Tickets should be turned in before initiating the demob process.
2. Return all property to Supply and/or Communications; they will notify demob that you returned all items.
3. Have equipment inspected at Ground Support and submit inspection form to finance as required.
4. If you are a trainee see the Training Message to close out with the Training Specialist..
5. FINALIZE your OF-288/OF-286 with Finance; they will notify demob that you are cleared.
6. Go through Weed Wash on your way out of camp, they will notify demob, no need to return to ICP. Be sure to submit travel info using QR code below.

Demob Contact: 208-891-6074

Email: 2023.ridgecreek.demob@firenet.gov

Air Travel



Driving



Crew Swap



Tentative Release Schedule

08/31/23

Crews

| | | |
|------|------|--------------|
| C-30 | CRW2 | DUST BUSTERS |
| C-31 | CRW2 | DUST BUSTERS |
| C-35 | CRW2 | DUST BUSTERS |

Equipment

| | | |
|-------|------|------------------------|
| E-73 | LOGL | ALEX |
| E-72 | MBM | DEAN |
| E-71 | LOGL | RANDOLPH |
| E-69 | LOGL | BLAKE |
| E-68 | LOGL | HESTER |
| E-25 | HETF | AKRE LOGGING |
| E-205 | MBM | HULETT |
| E-204 | MBM | CAHOON |
| E-203 | WTS2 | KING |
| E-185 | WTT2 | TETON COUNTY FIRE |
| E-184 | WTT2 | JUSTICE |
| E-183 | WTS2 | LEWIS |
| E-182 | WTT2 | SOMMERS |
| E-175 | ENG6 | FIRE CONTROL RESOURCES |
| E-173 | ENG6 | DAYS |
| E-172 | ENG6 | DANIEL J MARTIN |
| E-158 | ENG6 | FLAME CHASERS |
| E-157 | ENG6 | WINDSWEPT WILDFIRE |
| E-132 | WTT2 | TRI-STATE FIRE |
| E-130 | WTS2 | RICHARDSON |
| E-124 | MBM | WEST |

Overhead

| | | |
|-------|------|------------------------|
| O-94 | FMOD | WEST WOOD LLC |
| O-98 | FMOD | BROTHERS FIRE |
| O-103 | MESU | NOLEN INDEPENDENT MGMT |
| O-161 | TFLD | WALKER, CHRIS J |

09/01/23

Equipment

| | | |
|-------|------|---------------|
| E-26 | POT2 | HWWT |
| E-171 | WTS3 | HART VENTURES |

Overhead

| | | |
|-------|------|----------------------|
| O-188 | DMOB | CHRISTOPHER, WENDY F |
| O-196 | SEC1 | EDWARDS, MICAH V |

09/02/23

Crews

| | | |
|------|------|--------------|
| C-32 | CRW2 | DUST BUSTERS |
| C-33 | CRW2 | DUST BUSTERS |

Equipment

| | | |
|-------|------|---------------|
| E-2 | EXC2 | FOUSTS 35653 |
| E-179 | ENG6 | MERVIN BISHOP |
| E-180 | ENG6 | MERVIN BISHOP |
| E-181 | ENG6 | MERVIN BISHOP |

Overhead

| | | |
|-------|------|---------------------|
| O-199 | TFLD | TEAGUE, BURRELL L |
| O-200 | TFLD | DOYLE, ERIN R |
| O-226 | RCDM | EKE, JAYD |
| O-292 | EQPM | STOVER, DOUGLAS RAY |

Training Message



Check in with training



Check out with training

1. Ensure your trainer(s)/evaluator(s) has/have initialed completed tasks in your PTB;
2. If evaluator initialed #1 on your Evaluation Record, ensure he/she signs as final evaluator (located on the backside of your PTB cover page);
3. Email all documentation (including Evaluation Record sheet, ICS 225 or ICS226 when appropriate) to one of the TNSP's listed below.
4. **Special Note:** If you are working on the Complex Incident Management Field Evaluation Form, please be sure to send one of the TNSP's listed below the completed form and the name of your home unit contact that this information should be sent to.

If you are a trainee or working on a position Task Book (PTB) be sure to Check-in and Check-out with one of the Incident Training Specialist!

Lucas Hunkler, TNSP(t) 912-464-7067
lucas_hunkler@nps.gov

or Al Hoke, TNSP 678 232-7107
al_hoke@firenet.gov

Check-in



Check-out





Thanks to everyone who submitted photos for the photo contest. With so many images, it was a difficult decision. Congratulations to Cameron Gianfala for his picture, which is featured on the cover of the IAP.



Ridge Creek

Documentation Process



1. Name files in accordance with the standardized NWCG naming conventions:

{DocType}_{Version}_{Date}_{IncidentNumber}

EXAMPLE: UNIT DAILY LOGS – ICS 214

214_SpiessLisa_20230825_000447

EXAMPLE: GENERAL MESSAGES – ICS 213

213_DOCL_Spiess_20230825_000447

***Reminder: For 213's, use SENDER's UNIT NAME and SENDER's Last Name if known**

2. Upload your files in one of two ways:

A. Drop them daily into the [eDoc INBOX](#) in Teams, General Channel files, or use [SharePoint](#) location.

B. Email them daily to 2023.ridgecreek.docs@firenet.gov

All documentation will be filed electronically in TEAMS. There are no paper copies or paper doc boxes. If you need to scan files, there is one available in the Plans room at ICP. Not sure which documents are Permanent Records? Check out page 4 of [PMS 277](#).
If you have questions about what to file or how, please reach out!

Need help? Ask!

Lisa Spiess – Virtual DOCL-t

lisa_spiess@firenet.gov or 601-812-7819

You can also catch me in Teams chat!



Infectious Disease Prevention Reminders

Protect your best resource...your health!

1. **Wash your hands!** This is probably the single most effective action you can take to protect from many diseases including Covid-19, the flu, the common cold, stomach illnesses/upset. Use soap and hot water whenever possible and wash for at



least 20 seconds. If you can't get access to soap and water, hand sanitizer remains your next choice. Note that it may not be as effective as soap and water especially if your hands are grimy. Try to flush away most of the grime with water first before using hand sanitizer. Wash or sanitize frequently.

2. **Maintain distance.** While it can be difficult to implement, it's still a good practice to maintain "social distancing". While most diseases are spread from contact to hand then to mouth or eyes, many are still spread through aerosolized droplets. Adding some distance can help!









3. **Wipe down surfaces.** Many diseases can live on surfaces for some time. Frequently wipe contact surfaces with disinfecting wipes and allow surfaces to dry.

4. **Cough or Sneeze into your elbow,** not into your hands. If you forget, be sure to immediately wash your hands.

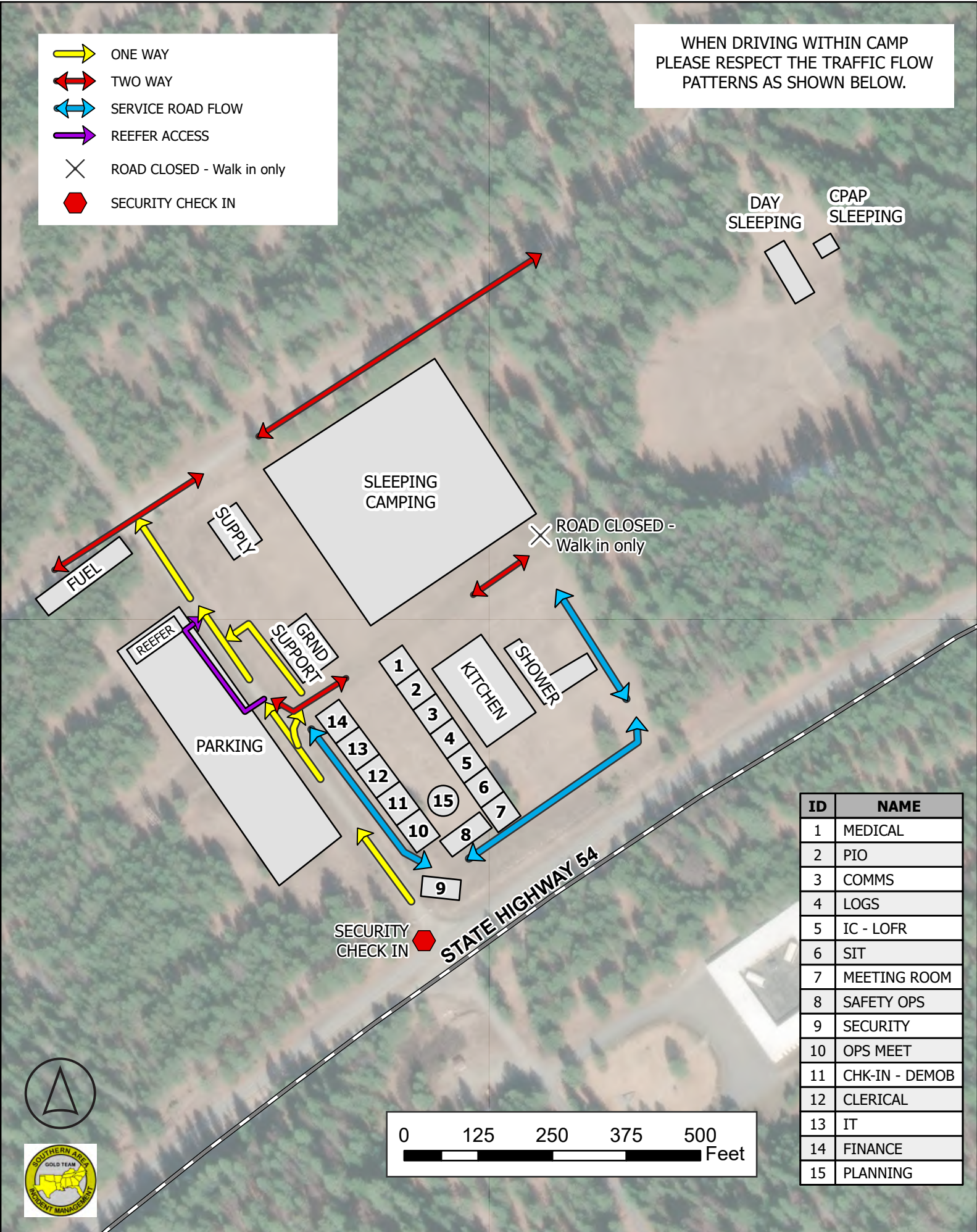
5. **Consider wearing a mask,** especially if you feel ill.

6. **Take good care of yourself.** Rest when able, hydrate, eat well, and overall support your immune system!

If you feel sick, please self-isolate and notify your immediate supervisor.

-  ONE WAY
-  TWO WAY
-  SERVICE ROAD FLOW
-  REEFER ACCESS
-  ROAD CLOSED - Walk in only
-  SECURITY CHECK IN

WHEN DRIVING WITHIN CAMP PLEASE RESPECT THE TRAFFIC FLOW PATTERNS AS SHOWN BELOW.



DAY SLEEPING
CPAP SLEEPING

SLEEPING CAMPING

ROAD CLOSED -
Walk in only

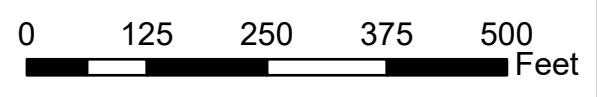
FUEL
SUPPLY
REEFER
GRND SUPPORT
PARKING

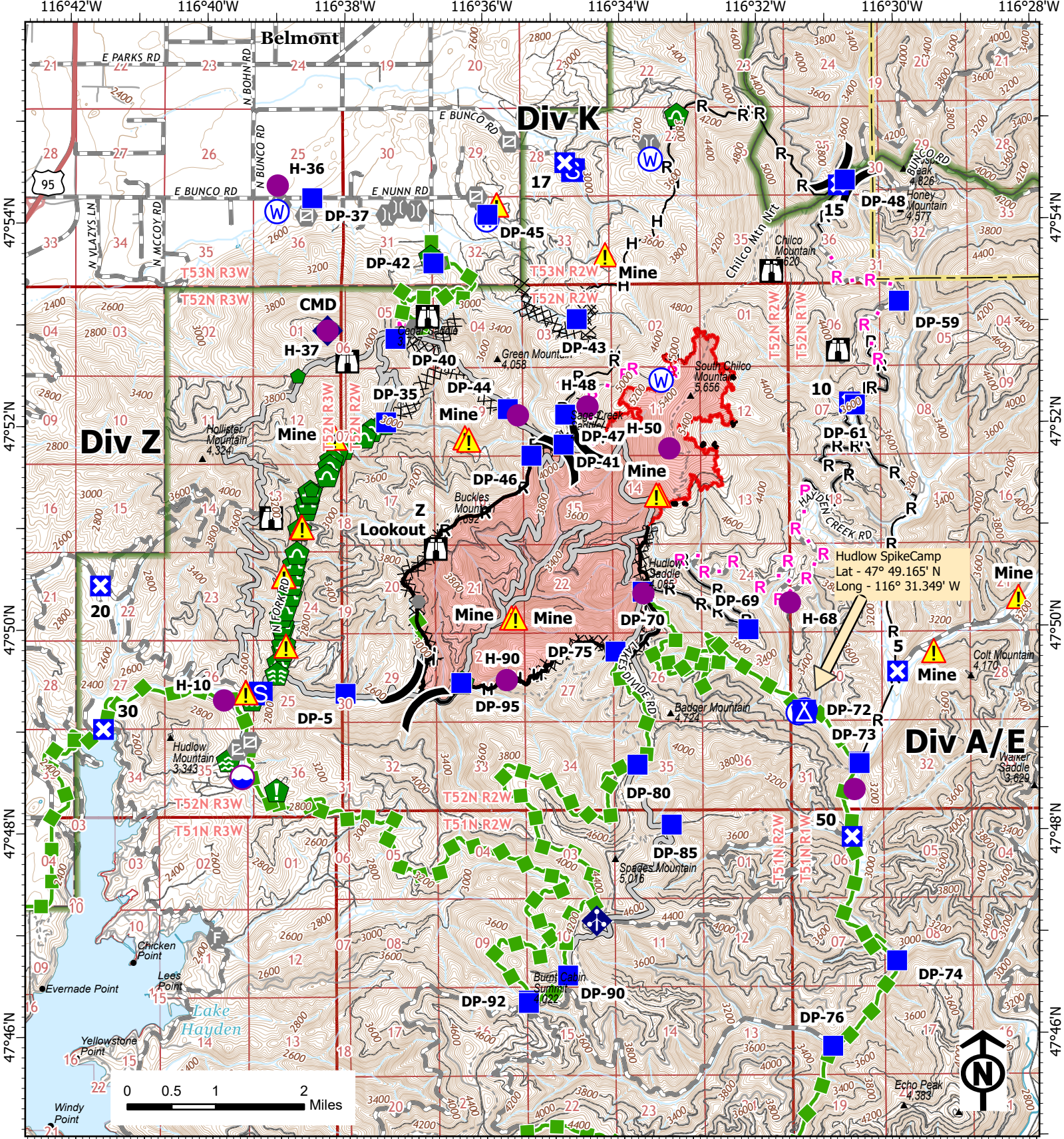
1
2
3
4
5
6
7
8
9
10
11
12
13
14
15
KITCHEN
SHOWER

SECURITY CHECK IN

STATE HIGHWAY 54

| ID | NAME |
|----|----------------|
| 1 | MEDICAL |
| 2 | PIO |
| 3 | COMMS |
| 4 | LOGS |
| 5 | IC - LOFR |
| 6 | SIT |
| 7 | MEETING ROOM |
| 8 | SAFETY OPS |
| 9 | SECURITY |
| 10 | OPS MEET |
| 11 | CHK-IN - DEMOB |
| 12 | CLERICAL |
| 13 | IT |
| 14 | FINANCE |
| 15 | PLANNING |





IAP
RIDGE CREEK
ID-IPF-000447
08/31/2023 Day

4474 acres at 8/29/2023 0049hrs
 Acres from IR

Date Exported: 8/30/2023 5:47 PM

- | | | | |
|--------------------|-----------------------------------|------------------------|-----|
| () Division Break | ● Other | 🌿 Culvert | H |
| 📍 Dip Site | 🚪 Gate | 🚚 Mobile Weather Unit | M |
| 🟣 Helispot | 🔥 Fire Station | 📡 Repeater | R |
| 🟦 Drop Point | 🌉 Bridge | ⚠️ Hazard | — |
| 🔲 Closure | 🏠 Water Development or Draft Site | 🌊 Water Source | --- |
| 🏕️ Camp | 🌳 Stream Crossing | ⌘ Completed Dozer Line | 🟩 |
| 📍 Staging Area | 🌳 Resource Location | H— | — |
| 🏠 Lookout | 🟩 Repair Point | M— | --- |
| 📍 Value at Risk | 🟩 Landing or Log Deck | R— | 🔴 |



MEDICAL PLAN (ICS 206 WF)

Controlled Unclassified Information//Basic

Medical Incident Report

FOR A NON-EMERGENCY INCIDENT, WORK THROUGH CHAIN OF COMMAND TO REPORT AND TRANSPORT INJURED PERSONNEL AS NECESSARY.

FOR A MEDICAL EMERGENCY: IDENTIFY ON-SCENE INCIDENT COMMANDER BY NAME AND POSITION AND ANNOUNCE "MEDICAL EMERGENCY" TO INITIATE RESPONSE FROM IMT COMMUNICATIONS/DISPATCH.

Use the following items to communicate situation to communications/dispatch.

1. CONTACT COMMUNICATIONS / DISPATCH (Verify correct frequency prior to starting report)

Ex: "Communications, Div. Alpha. Stand-by for Emergency Traffic."

2. INCIDENT STATUS: Provide incident summary (including number of patients) and command structure.

Ex: "Communications, I have a Red priority patient, unconscious, struck by a falling tree. Requesting air ambulance to Forest Road 1 at (Lat./Long.) This will be the Trout Meadow Medical, IC is TFLD Jones. EMT Smith is providing medical care."

| | | |
|---|---|---|
| Severity of Emergency / Transport Priority | <input type="checkbox"/> RED / PRIORITY 1 Life or limb threatening injury or illness. Evacuation need is IMMEDIATE <i>Ex: Unconscious, difficulty breathing, bleeding severely, 2^o - 3^o burns more than 4 palm sizes, heat stroke, disoriented.</i> <input type="checkbox"/> YELLOW / PRIORITY 2 Serious Injury or illness. Evacuation may be DELAYED if necessary. <i>Ex: Significant trauma, unable to walk, 2^o - 3^o burns not more than 1-3 palm sizes.</i> <input type="checkbox"/> GREEN / PRIORITY 3 Minor Injury or illness. Non-Emergency transport <i>Ex: Sprains, strains, minor heat-related illness.</i> | |
| Nature of Injury or Illness & Mechanism of Injury | | <i>Brief Summary of Injury or Illness (Ex: Unconscious, Struck by Falling Tree)</i> |
| Evacuation Request | | <i>Air Ambulance / Short Haul/Hoist Ground Ambulance / Other</i> |
| Patient Location | | <i>Descriptive Location & Lat. / Long. (WGS84)</i> |
| Incident Name | | <i>Geographic Name + Medical (Ex: Trout Meadow Medical)</i> |
| On-Scene Incident Commander | | <i>Name of on-scene IC of Incident within an Incident (Ex: TFLD Jones)</i> |
| Patient Care | | <i>Name of Care Provider (Ex: EMT Smith)</i> |

3. INITIAL PATIENT ASSESSMENT: Complete this section for each patient as applicable (start with the most severe patient)

Patient Assessment: See IRPG PAGE 106

Treatment:

4. EVACUATION PLAN:

Evacuation Location (if different): (Descriptive Location (drop point, intersection, etc.) or Lat. / Long.) Patient's ETA to Evacuation Location: [Click or tap here to enter text.](#)

Helispot / Extraction Site Size and Hazards:

5. ADDITIONAL RESOURCES / EQUIPMENT NEEDS:

Example: Paramedic/EMT, crews, immobilization devices, AED, oxygen, trauma bag, IV/fluid(s), splints, rope rescue, wheeled litter, HAZMAT, extrication

6. COMMUNICATIONS: Identify State Air/Ground EMS Frequencies and Hospital Contacts as applicable

| Function | Channel Name/Number | Receive (RX) | Tone/NAC * | Transmit (TX) | Tone/NAC * |
|-------------|---------------------|--------------|------------|---------------|------------|
| COMMAND | | | | | |
| AIR-TO-GRND | | | | | |
| TACTICAL | | | | | |

7. CONTINGENCY: Considerations: If primary options fail, what actions can be implemented in conjunction with primary evacuation method? Be thinking ahead..

8. ADDITIONAL INFORMATION: Updates/Changes, etc.

REMEMBER: Confirm ETA's of resources ordered. Act according to your level of training. Be Alert. Keep Calm. Think Clearly. Act Decisively.