

# Ridge Creek

## Incident Action Plan




**Operational Period**  
Friday, September 1<sup>st</sup>, 2023  
0600-2200

ID-IPF-000447  
P1QG9D (0104)





<b>INCIDENT OBJECTIVES</b>	1. Incident Name <b>Ridge Creek Fire</b>	2. Date 8/31/23	3. Time 2000
4. Operational Period: <b>09/01/202 0600 to 09/01/2023 0600</b>			
<b>5. General Control Objectives for the Incident</b> <ul style="list-style-type: none"> <li>• Protection of human life is the highest priority. Utilize a deliberative risk management process when mitigating risk to the public and incident resources. Implement actions where there is a high probability of success.</li> <li>• Keep Fire within current planning area with actions based on prioritized Values at Risk. <ul style="list-style-type: none"> <li>Prioritized values are: <ul style="list-style-type: none"> <li>○ Private property and residences</li> <li>○ Hayden Creek and Hayden Lake Water Quality</li> <li>○ Industrial timber lands, plantations, and Bottom Canyon Timber Sales (Idaho Forest Group) and other planned timber sales</li> <li>○ Bonneville Power Administration Transmission Line</li> <li>○ Hudlow Warming Hut</li> <li>○ Chilco Mountain National Recreation Trail</li> </ul> </li> </ul> </li> <li>• Protect infrastructure, private residences, private inholdings, and businesses within and near the planning area from negative impacts by fire and mitigate smoke impacts when possible.</li> <li>• Coordinate and communicate with all partners, cooperators, stakeholders and forest visitors as appropriate and as needed. Provide accurate and timely information as well as build and maintain the ongoing high trust environment.</li> <li>• Minimize fire and suppression impacts to timber values on private industrial timber lands and National Forest System lands.</li> <li>• Minimize potential fire impacts to critical community infrastructure and follow established management action points / requirements found in the Ridge Creek WFDSS decision.</li> </ul>			
7.			
<b>Attachments (mark if attached)</b>			
<input checked="" type="checkbox"/> Organization List - ICS 203	<input checked="" type="checkbox"/> Weather Forecast	<input checked="" type="checkbox"/> Messages Safety, Finance	
<input checked="" type="checkbox"/> Div. Assignment Lists - ICS 204	<input checked="" type="checkbox"/> Fire Behavior Forecast	<input checked="" type="checkbox"/> Messages Logs/Plans, READ	
<input checked="" type="checkbox"/> Communications Plan - ICS 205	<input checked="" type="checkbox"/> Incident Map	<input checked="" type="checkbox"/> Transportation Map & Hudlow Directions	
<input checked="" type="checkbox"/> Medical Plan - ICS 206	<input checked="" type="checkbox"/> Air Operations- ICS 220	<input checked="" type="checkbox"/> 205a, 206a, 214	
9. Prepared by (Planning Section Chief) Jessica Hollingsworth - RESL		9. Approved by (Incident Commander) 	

## ORGANIZATION ASSIGNMENT LIST (ICS 203)

<b>1. Incident Name:</b> Ridge Creek		<b>2. Operational Period</b> <b>Date From: 09/01/23</b> <b>Date To: 09/01/23</b>		
		<b>Time From: 0600</b> <b>Time To: 2200</b>		
<b>3. Incident Commander(s) and Command Staff:</b>		<b>7. Operations Section:</b>		
<b>IC/UC's</b>	Deborah Beard	<b>Lead Ops</b>	Jeff Schardt	
<b>Deputy</b>	Marshall Bentley	<b>Field Ops</b>	Matt Johnson; Jason Klawinsky (T)	
<b>Safety Officer</b>	Buddy Kelley; Larry Holsomback; Danny Gore (T)	<b>Planning Ops</b>	Shawn Nagle	
<b>Public Info. Officer</b>	Catherine Hibbard; Dick Fleishman; Nate Bogenschutz; Michelle Burnett	<b>Branch Director</b>	Brian Elam	
<b>Liaison Officer</b>	Michael Wright; Jeremy Edwardson (T)	<b>DIVISIONS</b>		
<b>4. Agency/Organization Representatives:</b>		<b>Division</b>	<b>A/E</b>	Greg Salansky; Jordan Collier (T)
<b>Agency/Organization</b>	<b>Name</b>			
<b>USFS</b>	Randy Swick; Holly Hampton (T)	<b>Division</b>	<b>K</b>	David Gregory; Marshall Myhre (T)
<b>IDL</b>	Andrew Smyth; Erik Sjoquist	<b>Division</b>	<b>Z</b>	Heath Thomas
<b>Resource Advisors</b>	Will Young	<b>Group</b>	<b>Structure/ IA</b>	Jared Nobles; Todd Bennett (T)
<b>5. Planning Section:</b>		<b>Group</b>	<b>Roads/ Chipper</b>	Daniel Johnson
<b>Chief</b>	Carol O'Bryan; Kevin Curry(T)	<b>Air Operations Branch</b>		
<b>Deputy</b>	Thomas Barrett	<b>Air Ops Branch Dir</b>	Tim Elder	
<b>Resources Unit</b>	Melonie Sellers; Ethan Robertson; Jessica Hollingsworth (V)	<b>Air Support Supervisor</b>	Nickolas Holschbach; Tim Lanterman (T)	
<b>Status Check-In</b>	Laura Vann	<b>6. Logistics Section:</b>		
<b>Situation Unit</b>	Eric Pullium (T)	<b>Chief</b>	Steve Weherley; Tim Exline (T); Todd Waller (T)	
<b>Demobilization Unit</b>	Jeff DeMatteis	<b>Deputy</b>	David McVay	
<b>Documentation Unit</b>	Lisa Spiess (T) (V)	<b>Communications Unit</b>	David Radzivil; Paul Noa	
<b>Technical Specialists</b>	John Edwards; Yasmir Diaz-Rohweder (T); Bridgette Webb (T)	<b>Medical Unit</b>	Bart Walker; Kurt Gainer	
<b>GIS Specialist</b>	Katherine Bronson; Hester Mallonee (T)	<b>Food Unit</b>	James Lowe; Dan Baker (T)	
<b>Incident Meteorologist</b>	Ryan Fliehman; Krista Carrothers (T)	<b>Facilities Unit</b>	Lester Kaiser; Mark Thornton (T)	
<b>Fire Behavior Analyst</b>	Kelly Cagle	<b>Base Camp Mgr</b>	Kathleen Paiva (T)	
<b>Training Specialist</b>	Al Hoke (V); Lucas Hunkler (T) (V)	<b>Ground Support Unit</b>	Brian Truss (T)	
<b>8. Finance/Administration Section:</b>		<b>Equipment Managers</b>	Doug Stover (T)	
<b>Chief</b>	Jason Gillis; Marlene Hudson (T)	<b>Supply Unit</b>	Sandra Rhodes	
<b>Deputy</b>	Reggie Lanier Jr	<b>Ordering Manager</b>	Sherri Kite	
<b>Time Unit</b>	Donna Bentley (V); Libby Bagwell; Brandon Brown (T) (V)	<b>Receiving/Distribution</b>	Justin Medley; Randall Hamilton (T)	
<b>Procurement Unit</b>		<b>Security Manager</b>	David Clark; Christopher Cooley	
<b>Comp/Claims Unit</b>	Terri McDonald (V)	<b>Hudlow Logistics</b>		
<b>Cost Unit</b>	Stacey Eaton; Tom Steele	<b>Base Camp Mgr</b>	David Brooks; Tim Crowell (T)	
		<b>Ground Support Unit</b>	Angela Parrish	
		<b>Equipment Managers</b>	Dwight Henry (T)	
<b>9. Prepared by: Name:</b> <u>Jessica Hollingsworth</u>		<b>Position/Title:</b> <b>RESL</b>		<i>Jessica Hollingsworth</i>
<b>ICS 203 IAP Page</b> <b>(V) - Virtual</b>		<b>Signature: Date/Time:</b> <b>08/31/23</b> <b>2030hrs</b>		



## Incident Weather Forecast



**FORECAST NO:** 23

**SHIFT DATE:** Friday 09/01/2023

**UNIT:** ID Panhandle NF

**NAME OF FIRE:** Ridge Creek

**SIGNED:** /s/ Ryan Fliehman IMET Krista Carrothers IMET(t)

[ryan.fliehman@noaa.gov](mailto:ryan.fliehman@noaa.gov) / (240) 205-6805

**WEATHER DISCUSSION:** Warmer temperatures are expected today, reaching into the 70s. Clouds break this afternoon, along with lowering humidity into the 40 percents and fair overnight recoveries. Saturday is the warmest day, with temperatures reaching the upper 70s and clouds returning in the late morning. Sunday will start off cooler with increasing winds in the afternoon ahead of the front. Breezy winds persist into Monday with another chance of precipitation and cooler temperatures. Tuesday onward brings lighter winds, moderate humidity and below normal temperatures for the middle of next week.

**Today's Weather:** Slightly warmer and drier.

	Ridge Creek Fire	Farragut ICP (2,400ft)
<b>TEMPERATURES (Trend):</b>	73-78° (+12)	79-84° (+11)
<b>HUMIDITY (Trend):</b>	39-44% (-18%)	35-40% (-9%)
<b>20 FT WINDS: RIDGETOP</b>	Northeast winds 7-11, decreasing to 5 to 8 mph after 1400.	
<b>SLOPE/VALLEY</b>	Northeast winds 3-6 mph, becoming light and terrain driven.	Northeast winds 4-9 mph, becoming light.
<b>MIXING HEIGHT:</b>	5,000 feet AGL	5,000 feet AGL
<b>STABILITY/INVERSION:</b>	Inversion 3,500 feet, not breaking	Inversion 3,500 feet, not breaking
<b>HAINES INDEX (high)</b>	3 – (Stability 2, Moisture 1)	3 – (Stability 2, Moisture 1)
<b>CHANCE OF RAIN:</b>	0	0
<b>LIGHTNING (LAL):</b>	1	1
<b>RH RECOVERY TONIGHT:</b>	70 (Good)	75%+ (Good)
<b>OVERNIGHT WINDS:</b>	Northeast 4-9 mph on ridges, light valley winds.	

\*\*\*Trend based on yesterday's observed values.\*\*\*

**SATURDAY OUTLOOK:** Clouds with pockets of sunshine will return on Saturday, but despite that, temperatures will be the warmest in the last several days. Temperatures rise into the upper 70s for the ridges with near 80 in the valleys. Light winds and humidity lowering into the 40 percents is expected.

**EXTENDED FORECAST:** Temperatures Sunday will be slightly cooler with increased winds ahead of the front that passes Sunday night. Monday is the low point in the forecast with temperatures falling into the 60s, breezy winds and the chance for showers/thunderstorms. Tuesday begins a slight warming and drying trend with light winds that will persist into the middle of next week.

**EXTRA INFORMATION:** Coeur d'Alene (2,320ft): High temp: 70°. Low RH: 46%.  
Spades IRAWS (4,678ft): High temp: 63°. Low RH: 59%.  
MaGee Peak RAWs (4,720ft): High temp: 57°. Low RH: 68%.

**Please send us your observations! Text photos or obs to the phone number above.**

FIRE BEHAVIOR FORECAST	
FORECAST NUMBER: #23	TYPE OF FIRE: Wildland
FIRE NAME: Ridge Creek	OPERATIONAL PERIOD: 9/01/23 Day Shift
DATE ISSUED: 08/31/23	TIME ISSUED: 2000
UNIT: Idaho Panhandle NF	WRITTEN: Kelly Cagle - FBAN

**FUELS:** The major fuel type found on the Ridge Creek fire is mixed conifer (fuel models 10/TU1/TU5). There are areas of open canopy conifer with grass and shrub understory on the south and west facing slopes, and there also areas of closed canopy conifer – mostly on the north and east facing slopes. Additionally – areas of subalpine fire are present in the higher elevations. Live fuels have not been a huge driver of fire spread thus far – in fact – they are a bit of a deterrent on north and east facing slopes.

**WEATHER SUMMARY:** Sunshine today mixed with some clouds and temps in the low 70's. Humidities remain above levels of concern. Light winds today. See fire weather forecast for more specifics.

**General Fire Behavior Forecast:** Fire behavior is expected to be minimal today. Fuels remain damp and not conducive to fire spread. An isolated smoke or smolder might be possible, especially under heavy canopy. Open, spreading flame is not expected.

**Critical fire behavior thresholds for Idaho Panhandle NF:**

**RH below 20%    Winds greater than 20    Daytime temp > 80    Haines 5 or 6**

**Specific:**

Division Echo/Alpha – Smoldering in duff or heavy dead/down possible. Active flame unlikely.

Division Kilo – Some heat may remain in the “horseshoe” area from recent burnout. Smoldering or continued consumption of heavy fuel possible. Other fire activity unlikely.

Division Zulu –Smoke or smolder possible. Otherwise minimal fire behavior expected.

**Initial Attack** – Initial attack unlikely. Minimal fire behavior expected if IA occurs.

\*\*\*\*\*

Fine fuel moisture today is -	High	Rates of Spread in Timber- Minimal
Probability of Ignition today -	Low	Rates of Spread in Grass- None to Very Low
Max Spotting Distance Today-	N/A	Flame Lengths- None to Very Low

**AIR OPERATIONS** : Early morning inversion likely. Suitable conditions for aviation activities expected once that clears.

**FIRE BEHAVIOR SAFETY:** Reminder – In general – the rule of thumb for a safety zone is that the distance between firefighters and flame should be at least 4 times the flame height – one each side. One important point to remember is that slope is not accounted for. If fire is on a slope – you need to increase the distance.

DIVISION ASSIGNMENT LIST		1. Branch	2. Division <b>Div-A/E (Page 1 of 2)</b>			
3. Incident Name <b>RIDGE CREEK</b>		Operational Period from: 09/01/2023 0600 To: 09/01/2023 2200				
5. Operations Personnel						
Field Operations Section Chief		Matt Johnson Jason Klawinsky(T)		Branch Director		Brian Elam
Planning Operations Section Chief		Shawn Nagle		Division Supervisor		Greg Salansky 865-414-6461 Jordon Collier (T) 912-464-9453
6. Resources Assigned this Period						
RO#	Strike Team/Task Force/ Resource Designator	Leader	# People	LWD	Drop Off PT./Time	Pick Up PT./Time
C-34	CRW2 Blue Mountain C-2	Moreno-Esoinoza	20	9/2	Hudlow/0600	ICP/2200
E-217	ENG6 Firebrand Forestry	Douglas	3	9/6	Hudlow/0600	ICP/2200
E-218	ENG6 Cahoon Contracting LLC	Peterson	3	9/6	Hudlow/0600	ICP/2200
E-79	EXC2 J&P Idaho Services	Kitchen	2	9/3	Hudlow/0600	ICP/2200
E-8	EXC2 Fousts Inc.-35616	Gatchell	1	9/9	Hudlow/0600	ICP/2200
E-32	EXC2 Altered Aspects LLC	Hess	2	9/6	Hudlow/0600	ICP/2200
E-4	WTS2 Craig Martin 492771	Martin	1	9/3	Hudlow/0600	ICP/2200
7. Control Operations: TASK: Ensure fireline integrity is maintained, implement suppression repairs and road improvements as instructed. PURPOSE: To ensure fire containment while seeking opportunities to backhaul and identify areas for suppression repair. END STATE: Threats to containment secured, repairs to constructed firelines are repaired under advisement from Resource Advisors and non-essential equipment is returned to supply.						
8. Special Instructions: Ensure containment along established fireline. In consultation with Resource Advisor (READ), implement the suppression repair to constructed firelines where feasible. Back haul all water handling and other equipment, not essential for operational assignment. Utilize field maps to identify completed work. Ensure that comms are functional. Maintain Situational Awareness around heavy equipment operations. Ensure inclement weather exit plan is known and viable.						
9. Division/Group Communication Summary						
Communications Summary						
Channel	Function	RX Frequency	RX Tone	TX Frequency	TX Tone	
1 TAC 1	TAC	168.0500 N	110.9	168.0500 N	110.9	
7 MT MONUMENT	CMD	170.0125 N	110.9	165.2500 N	110.9	
8 CEDAR	CMD	170.9750 N	110.9	168.7000 N	110.9	
13 A/G PRI	A/G	167.1250 N	NONE	167.1250 N	NONE	
14 A/G SEC	A/G	166.6125 N	NONE	166.6125 N	NONE	
16 AIRGUARD	AIRGUARD	168.6250 N	NONE	168.6250 N	110.9	
Prepared by (Resource Unit Ldr) <i>Melanie Sellers</i>				Date 08/31/2023	Time 2030	

DIVISION ASSIGNMENT LIST			1. Branch		2. Division <b>DIV- A/E (Page 2 of 2)</b>	
3. Incident Name <b>RIDGE CREEK</b>			4. Operational Period From: 09/01/2023 0600 To: 09/01/2023 2200			
5. Operations Personnel						
Field Operations Section Chief		Matt Johnson Jason Klawinsky (T)		Branch Director		Brian Elam
Planning Operations Section Chief		Shawn Nagle		Division Supervisor		Greg Salansky 865-414-6461 Jordon Collier (T) 912-464-9453
<b>RO#</b>	<b>Strike Team/Task Force/ Resource Designator</b>	<b>Leader</b>	<b># People</b>	<b>LWD</b>	<b>Drop Off PT./Time</b>	<b>Pick Up PT./Time</b>
O-212.68	TFLD	Holsomback	1	9/4	Hudlow/0600	ICP/2200
O-198	TFLD	Krzym	1	9/6	Hudlow/0600	ICP/2200
O-231	TFLD (T)	Fuentes	1	9/5	Hudlow/0600	ICP/2200
O-166	HEQB (T)	McGuire	1	9/3	Hudlow/0600	ICP/2200
O-212.21	SOF2 (T)	Gray	1	9/3	Hudlow/0600	ICP/2200
O-232	SOFR	Foco	1	9/2	Hudlow/0600	ICP/2200
O-244	REMS Ranger MT Rescue	Lahti	4	9/6	Hudlow/0600	ICP/2200
O-221	EMPF	Ratti	1	9/4	Hudlow/0600	ICP/2200
O-224	EMTF	Roy	1	9/3	Hudlow/0600	ICP/2200
E-122	AMB1 ALS-ID881N Idaho Falls FD # 847	Wood	2	9/9	Hudlow/0600	ICP/2200
7. Control Operations: TASK: Ensure fireline integrity is maintained, implement suppression repairs and road improvements as instructed. PURPOSE: To ensure fire containment while seeking opportunities to backhaul and identify areas for suppression repair. END STATE: Threats to containment secured, repairs to constructed firelines are repaired under advisement from Resource Advisors and non-essential equipment is returned to supply.						
8. Special Instructions: Ensure containment along established fireline. In consultation with Resource Advisor (READ), implement the suppression repair to constructed firelines where feasible. Back haul all water handling and other equipment, not essential for operational assignment. Utilize field maps to identify completed work. Ensure that comms are functional. Maintain Situational Awareness around heavy equipment operations. Ensure inclement weather exit plan is known and viable.						
9. Division/Group Communication Summary						
Communications Summary						
<b>Channel</b>	<b>Function</b>	<b>RX Frequency</b>	<b>RX Tone</b>	<b>TX Frequency</b>	<b>TX Tone</b>	
1 TAC 1	TAC	168.0500 N	110.9	168.0500 N	110.9	
7 MT MONUMENT	CMD	170.0125 N	110.9	165.2500 N	110.9	
8 CEDAR	CMD	170.9750 N	110.9	168.7000 N	110.9	
13 A/G PRI	A/G	167.1250 N	NONE	167.1250 N	NONE	
14 A/G SEC	A/G	166.6125 N	NONE	166.6125 N	NONE	
16 AIRGUARD	AIRGUARD	168.6250 N	NONE	168.6250 N	110.9	
Prepared by (Resource Unit Ldr) <i>Melanie Sellers</i>				Date 08/31/2023	Time 2030	



DIVISION ASSIGNMENT LIST			1. Branch		2. Division <b>DIV- K</b>	
3. Incident Name <b>RIDGE CREEK</b>			4. Operational Period From: 09/01/2023 0600 To: 09/01/2023 2200			
5. Operations Personnel						
Field Operations Section Chief		Matt Johnson Jason Klawinsky (T)		Branch Director		
Planning Operations Section Chief		Shawn Nagle		Division Supervisor		David Gregory 208-784-3711 Marshall Myhre (T) 208-819-5126
6. Resources Assigned this Period						
RO#	Strike Team/Task Force/ Resource Designator	Leader	# People	LWD	Drop Off PT./Time	Pick Up PT./Time
C-36	TYPE 2IA MOCC Interagency Crew 4	Hedges	19	9/8	ICP/0600	ICP/2200
E-2	EXC2 Fousts Inc. 35653	Kramer	1	9/1	ICP/0600	ICP/2200
O-277	SOF2	McRae	1	9/10	ICP/0600	ICP/2200
O-172	EMPF North Forks Medics	Wallace	1	9/5	ICP/0600	ICP/2200
7. Control Operations: TASK: Ensure fireline integrity is maintained, implement suppression repair and road improvements as instructed. PURPOSE: To ensure fire containment while seeking opportunities to backhaul and identify areas for suppression repair. END STATE: Threats to containment secured, repairs to constructed firelines are repaired under advisement from Resource Advisors and non-essential equipment is returned to supply.						
8. Special Instructions: Ensure containment along established fireline. In consultation with Resource Advisor (READ), implement the suppression repair to constructed firelines where feasible. Back haul all water handling and other equipment, not essential for operational assignment. Utilize field maps to identify completed work. Ensure that comms are functional. Maintain Situational Awareness around heavy equipment operations. Ensure inclement weather exit plan is known and viable.						
9. Division/Group Communication Summary						
Communications Summary						
Channel	Function	RX Frequency	RX Tone	TX Frequency	TX Tone	
2 TAC 2	TAC	168.2000 N	110.9	168.2000 N	110.9	
7 MT MONUMENT	CMD	170.0125 N	110.9	165.2500 N	110.9	
8 CEDAR	CMD	170.9750 N	110.9	168.7000 N	110.9	
13 A/G PRI	A/G	167.1250 N	NONE	167.1250 N	NONE	
14 A/G SEC	A/G	166.6125 N	NONE	166.6125 N	NONE	
16 AIRGUARD	AIRGUARD	168.6250 N	NONE	168.6250 N	110.9	
Prepared by (Resource Unit Ldr) <i>Jessica Hollingsworth</i>				Date 08/31/2023	Time 2030	

DIVISION ASSIGNMENT LIST			1. Branch		2. Division	
3. Incident Name <b>RIDGE CREEK</b>			4. Operational Period <b>From: 09/01/2023 0600 To: 09/01/2023 2200</b>			
5. Operations Personnel						
Field Operations Section Chief		Matt Johnson Jason Klawinsky (T)		Branch Director		
Planning Operations Section Chief		Shawn Nagle		Division Supervisor		Heath Thomas 501-208-7077
6. Resources Assigned this Period						
RO#	Strike Team/Task Force/ Resource Designator	Leader	# People	LWD	Drop Off PT./Time	Pick Up PT./Time
E-212	CHP2 Hester Forest Management	Schopp	3	9/6	ICP/0600	ICP/2200
E-78	EXC Fousts Inc.	Unruh	1	9/8	ICP/0600	ICP/2200
E-25	HETF Akre Logging Akre 1	Akre	6	9/7	ICP/0600	ICP/2200
E-68	LOGL Track Log Loader	Hester	2	9/6	ICP/0600	ICP/2200
E-69	LOGL Track Log Loader	Blake	2	9/3	ICP/0600	ICP/2200
E-71	LOGT Log Truck	Randolph	2	9/5	ICP/0600	ICP/2200
E-73	LOG Processor	Alex	2	9/5	ICP/0600	ICP/2200
O-163	TFLD	Berger	1	9/5	ICP/0600	ICP/2200
O-183	TFLD (T)	Wilson	1	9/7	ICP/0600	ICP/2200
O-170	HEQB	Courson	1	9/3	ICP/0600	ICP/2200
O-305	HEQB	Wyatt	1	9/13	ICP/0600	ICP/2200
O-277	SOF2	McRea	1	9/10	ICP/0600	ICP/2200
O-210	EMTF	Dowd	1	9/6	ICP/0600	ICP/2200
E-80	RAT MESU Kootenal Fire & Rescue	Wagner	2	9/6	ICP/0600	ICP/2200
E-155	AMB1 ALS Boundary	Rinella	2	9/7	ICP/0600	ICP/2200
7. Control Operations: TASK: Ensure fireline integrity is maintained and implement suppression repair as instructed. PURPOSE: To ensure fire containment while seeking opportunities to backhaul and identify areas for suppression repair. END STATE: Threats to containment secured, repairs to constructed firelines are repaired under advisement from Resource Advisors and non-essential equipment is returned to supply.						
8. Special Instructions: Ensure fireline is secured from the heal to north to division break. In consultation with Resource Advisor (READ), implement the suppression repair to constructed firelines where feasible. Back haul all water handling and other equipment, not essential for operational assignment. Utilize field maps to identify completed work. Ensure that comms are functional. Maintain Situational Awareness around heavy equipment operations. Ensure inclement weather exit plan is known and viable.						
Communications Summary						
Channel	Function	RX Frequency	RX Tone	TX Frequency	TX Tone	
3 TAC 3	TAC	168.6000 N	110.9	168.6000 N	110.9	
7 MT MONUMENT	CMD	170.0125 N	110.9	165.2500 N	110.9	
8 CEDAR	CMD	170.9750 N	110.9	168.7000 N	110.9	
13 A/G PRI	A/G	167.1250 N	NONE	167.1250 N	NONE	
14 A/G SEC	A/G	166.6125 N	NONE	166.6125 N	NONE	
16 AIRGUARD	AIRGUARD	168.6250 N	NONE	168.6250 N	110.9	
Prepared by (Resource Unit Ldr) <i>Ethan Robertson</i>				Date 08/31/2023	Time 1900	

DIVISION ASSIGNMENT LIST			1. Branch		2. Division <b>Structure / IA</b>	
3. Incident Name <b>RIDGE CREEK</b>			4. Operational Period <b>From: 09/01/2023 0600 To: 09/01/2023 2200</b>			
5. Operations Personnel						
Field Operations Section Chief		Matt Johnson Jason Klawinsky (T)		Branch Director		
Planning Operations Section Chief		Shawn Nagle		Division Supervisor		Jared Nobles 352-817-6915 Todd Bennett (T) 864-429-6058
6. Resources Assigned this Period						
RO#	Strike Team/Task Force/ Resource Designator	Leader	# People	LWD	Drop Off PT./Time	Pick Up PT./Time
Local	ENG6 IPFID 641	White	4	NA	ICP/0600	ICP/2200
E-174	ENG6 Starkcorp Inc. B40745	Stark	3	9/2	ICP/0600	ICP/2200
E-3	WTT2 ST Florian	Phillips	1	9/2	ICP/0600	ICP/2200
O-204	STEN	McAhren	1	9/2	ICP/0600	ICP/2200
O-223	AEMF	Haas	1	9/6	ICP/0600	ICP/2200
7. Control Operations: TASK: Maintain initial response capabilities for any new starts within TFR and support other DIVs as needed. PURPOSE: Suppress new fire starts within the TFR. DIVs right sizing of resources may require additional support. END STATE: Initial response successfully suppressed and DIVs needs are met.						
8. Special Instructions: Back haul all water handling and other equipment. Serve as initial response resource under the Ridge Creek TFR and adjacent properties as requested. Support divisions with resources as needed while maintaining initial response availability. Ensure inclement weather exit plan is known and viable. Utilize field maps to identify completed work.						
9. Division/Group Communication Summary						
Communications Summary						
Channel	Function	RX Frequency	RX Tone	TX Frequency	TX Tone	
4 TAC 4	TAC	166.7250 N	110.9	166.7250 N	110.9	
7 MT MONUMENT	CMD	170.0125 N	110.9	165.2500 N	110.9	
8 CEDAR	CMD	170.9750 N	110.9	168.7000 N	110.9	
13 A/G PRI	A/G	167.1250 N	NONE	167.1250 N	NONE	
14 A/G SEC	A/G	166.6125 N	NONE	166.6125 N	NONE	
16 AIRGUARD	AIRGUARD	168.6250 N	NONE	168.6250 N	110.9	
Prepared by (Resource Unit Ldr) <i>Ethan Robertson</i>				Date 08/31/2023	Time 2030	

DIVISION ASSIGNMENT LIST			1. Branch	2. Division <b>Roads/Chipper Group</b>		
3. Incident Name <b>RIDGE CREEK</b>			4. Operational Period <b>From: 09/01/2023 0600 To: 09/01/2023 2200</b>			
5. Operations Personnel						
Field Operations Section Chief		<b>Matt Johnson Jason Klawinsky (T)</b>		Branch Director		
Planning Operations Section Chief		<b>Shawn Nagle</b>		TFLD		<b>Daniel Johnson 719-480-9764</b>
6. Resources Assigned this Period						
RO#	Strike Team/Task Force/ Resource Designator	Leader	# People	LWD	Drop Off PT./Time	Pick Up PT./Time
Local	CRW Coeur d'Alene River	Hill	16	NA	ICP/0600	ICP/2200
C-44	HC2IA Miller Timber	Hill	20	9/13	ICP/0600	ICP/2200
E-214	CHP2 The American Firefighter Company	Gwin	3	9/6	ICP/0600	ICP/2200
E-227	CHP2 RAC Logging	Keller	2	9/13	ICP/0600	ICP/2200
Local	CHP3 Local Chipper	Hill	1	9/10	ICP/0600	ICP/2200
E-60	DUMP Joe Hester Logging	Irvine	1	9/4	ICP/0600	ICP/2200
E-61	FRNT Joe Hester Logging	Heffener	1	9/4	ICP/0600	ICP/2200
E-7	GRD1 Foust Inc	Kramer	1	9/3	ICP/0600	ICP/2200
O-306	HEQB	Capobianco	1	9/11	ICP/0600	ICP/2200
O-312	HEQB (T)	Bowen	1	9/11	ICP/0600	ICP/2200
7. Control Operations: TASK: Chip woody debris along forest roads and closure boundary. PURPOSE: To make forest roads safe for vehicle travel. END STATE: Forest roads are safe for vehicle travel, within closure boundary.						
8. Special Instructions: Chip woody debris along forest roads within closure boundary. Back haul all water handling and other equipment, not essential for operational assignment. Utilize field maps to identify completed work. Ensure that comms are functional. Maintain Situational Awareness around heavy equipment operations. Ensure all fire lines have established water-bars. Ensure inclement weather exit plan is known and viable.						
9. Division/Group Communication Summary						
Communications Summary						
Channel	Function	RX Frequency	RX Tone	TX Frequency	TX Tone	
5 TAC 5	TAC	166.7750 N	110.9	166.7750 N	110.9	
7 MT MONUMENT	CMD	170.0125 N	110.9	165.2500 N	110.9	
8 CEDAR	CMD	170.9750 N	110.9	168.7000 N	110.9	
13 A/G PRI	A/G	167.1250 N	NONE	167.1250 N	NONE	
14 A/G SEC	A/G	166.6125 N	NONE	166.6125 N	NONE	
16 AIRGUARD	AIRGUARD	168.6250 N	NONE	168.6250 N	110.9	
Prepared by (Resource Unit Ldr) <i>Ethan Robertson</i>				Date 08/31/2023	Time 2030	

# HEALTH AND SAFETY MESSAGE

## *SAFETY is YOU & ME*

We are ALL accountable for SAFE behaviors

**INCIDENT:** Ridge Creek Fire

**Date:** September 1, 2023

**Major Hazards and Risks:** Driving, Fatigue, Suppression Repair, Camp crud

**Driving-** Continues to be a daily hazard. Drive defensively whether that be from other traffic, road conditions or wildlife. Check your vehicle daily before you head out to the line. Clean windshields and check your cab for any loose material that could cause damage to any occupants when braking for hazards. Be aware of increased traffic due to a holiday weekend. Drive to conditions, roads are slippery from recent rains

**Fatigue-** Make sure you are getting rest when off shift. Fatigue over extended periods of time can cause you to be more susceptible to illness. Adhere to the 2 to 1 work rest ratio.

**Suppression Repair-** Keep your head in the game, repair efforts continue throughout the fire perimeter. Watch out for weakened trees and heavy equipment working along fire lines.

**Camp crud-** Wash your hands!!! If you are feeling ill, go see medical. Don't suffer with a cold or any other illness because you could be contagious and spread it to other crew members throughout camp.



**S**ize up snag hazards in work area

**N**ever become complacent

**A**lways look up

**G**et weather reports

**S**cout out parking, sleeping, work areas & safety zones

**A**dvice co-workers of known hazards

**F**ace your hazard and take appropriate action

**E**xamine work area for other hazards

**T**ake extra caution around heavy equipment

**Y**ou are ultimately responsible for your own safety

Incident Safety Officers: Buddy Kelley (SOFC), Larry Holsomback (SOF2), Danny Gore (SOF2T)

<b>AIR OPERATIONS SUMMARY 220</b>		Prepared By: Tim Elder	Prepared: August 31, 2023		Prepared Time: 1600 hrs.	
INCIDENT NAME: Ridge Creek Fire		OPERATIONAL PERIOD September 1, 2023	START TIME 0800	END TIME 2000	SUNRISE 0605	SUNSET 1927

REMARKS -All aircraft orders thru Air Attack if on scene, otherwise thru AOBD -Large Electric Transmission Line through center of fire area -Retardant restricted in pre-designated avoidance areas and Chilco Trail ridge to the NE	MEDICAL RESPONSE AIRCRAFT * Follow Medical Plan ICS-206 *	TFR 3/3326 Ridge Creek 8,000 feet MSL. 0800 to 2200 Daily Freq. 119.15
---	--	--

PERSONNEL	NAME	PHONE #	FREQUENCIES	AM	FM	FIXED-WING Avail/ Type/ Make-Model/ N#/ Base
AOBD	Tim Elder	863-243-1438 tim_elder@firenet.gov	A/A PRI	119.150		ATGS Platforms: N76WA- AA104 - Region Preposition
ASGS	Nick Holschbach	406-925-1737 nicholas.holschbach@usda.gov	A/A SEC	127.200		F/W Bases: Coeur d'Alene (KCOE)
ASGS (T)	Tim Lanterman	386-292-4049 timothy.lanterman@usda.gov	A/G PRI		167.1250	R/W Bases: Coeur d'Alene (KCOE) Sandpoint (KSZT)
ATGS (AA104)	Mike Bagan	208-446-6770 michael.bagan@usda.gov	A/G SEC		166.6125	
			KCOE Tower	120.125		
			KCOE Ground	127.000		Air Tankers LATs - SEATs - FB-205, FB-206

**HELICOPTERS**

FAA N#	TY	MAKE/ MODEL	BASE	START	AVAIL	REMARKS	FAA N#	TY	MAKE/MODEL	BASE	START	AVAIL	REMARKS
<b>REGION PREPOSITION HELICOPTERS AVAILABLE ON REQUEST</b>													
N561AJ	1	CH-47	COE	0800	0900	Bucket	N214B	1	B214	Sandpoint	0800	0900	Bucket
N777TD	3	B407	COE	0800	0900	Bucket/Recon	N28HX	2	B205+	Sandpoint	0800	0900	Bucket/Rappel
N102RF	3	AS350B2	COE	0800	0900	Bucket/Recon							

**Controlled Unclassified Information/Basic**

**ICS 205**

<b>INCIDENT RADIO COMMUNICATIONS PLAN</b>			Incident Name <b>RIDGE CREEK</b>			Date/Time Prepared: <b>8/31/2023 / 1630</b>			Operational Period Date/Time From: <b>9/1/2023 / 0600</b> To: <b>9/1/2023 / 2200</b>	
Ch #	Function	Channel Name/Trunked Radio System Talkgroup	Assignment	RX Freq N or W	RX Tone/NAC	TX Freq N or W	Tx Tone/NAC	Mode	Remarks	
1	TACTICAL	TAC 1	DIV. A / E	168.0500 N	110.9	168.0500 N	110.9	A		
2	TACTICAL	TAC 2	DIV. K	168.2000 N	110.9	168.2000 N	110.9	A		
3	TACTICAL	TAC 3	DIV. Z	168.6000 N	110.9	168.6000 N	110.9	A		
4	TACTICAL	TAC 4	STRUCTURE / IA	166.7250 N	110.9	166.7250 N	110.9	A		
5	TACTICAL	TAC 5	ROADS / CHIPPER	166.7750 N	110.9	166.7750 N	110.9	A	ROADS / CHIPPER GROUP	
6	TACTICAL	FIRE TAC	IA	168.7250 N	107.2	168.7250 N	107.2	A	IPNF FIRE TAC / INITIAL ATTACK	
7	COMMAND	MT MONUMENT	ALL DIVISIONS	170.0125 N	110.9	165.2500 N	110.9	A	LINKED COMMAND	
8	COMMAND	CEDAR	ALL DIVISIONS	170.9750 N	110.9	168.7000 N	110.9	A	LINKED COMMAND	
9	IA	FS-LTL GARD	IA	169.9250 N	107.2	165.5625 N	156.7	A	IA – OUTSIDE TFR	
10	IA	FS-MICA	IA	169.9250 N	107.2	165.5625 N	167.9	A	IA – OUTSIDE TFR	
11	IA	FS-MONUMENT	IA	169.9250 N	107.2	165.5625 N	131.8	A	IA – OUTSIDE TFR	
12	UNASSIGNED	A/G MARINE	----	----	----	----	----	----	NOT FOR USE	
13	AIR TO GROUND	A/G PRI	ALL DIVISIONS	167.1250 N	NONE	167.1250 N	NONE	A	AIR TO GROUND PRIMARY	
14	AIR TO GROUND	A/G SEC	ALL DIVISIONS	166.6125 N	NONE	166.6125 N	NONE	A	AIR TO GROUND SECONDARY	
15	MEDIVAC	EMS	ALL DIVISIONS	155.2800 N	NONE	155.2800 N	156.7	A	AIR EVAC COORDINATION	
16	AIR GUARD	AIRGUARD	ALL DIVISIONS	168.6250 N	NONE	168.6250 N	110.9	A	AIR GUARD	
5. Prepared by: (Communications Unit) <b>Dave Radzivill, COML</b>					Incident Location: <b>ID-IPF</b> County/State: <b>KOOTENAI COUNTY, ID</b>			Latitude / Longitude: <b>47° 57.9998', -116° 34.9786'</b>		

*The convention calls for frequency lists to show four digits after the decimal place, followed by either an "N" or a "W", depending on whether the frequency is narrow or wide band. Mode refers to either "A" or "D" indicating analog or digital (Project 25).*

**\*\*\* Special Instructions: Use Human Repeater When Necessary.**

**To initiate an IWI, contact RIDGE CREEK COMMUNICATIONS on "CEDAR" OR "MONUMENT" (Channel "7" OR "8")  
RIDGE CREEK COMMUNICATIONS - Cell (208) 891-6392**

# MEDICAL PLAN (ICS 206 WF)

Controlled Unclassified Information//Basic

1. Incident/Project Name		2. Operational Period					
Ridge Creek Fire		Date/Time 0600 – 2200		9/1/2023 to 9/1/2023			
3. Ambulance Services							
Name	Complete Address	Phone & EMS Frequency	Advanced Life Support (ALS)				
			Yes	No			
Timber Lake Fire Protection	5984 E Highway 54 Athol, ID non-emergency: (208) 683-3333	911	<input type="checkbox"/>	<input checked="" type="checkbox"/>			
Kootenai County Fire Rescue	1590 E Seltice Way, Post Falls, ID non-emergency # (208)666-5676	911	<input checked="" type="checkbox"/>	<input type="checkbox"/>			
4. Air Ambulance Services							
Name	Phone	Type of Aircraft & Capability					
Life Flight	(208)772-3283 USFS dispatch	Hayden or Sandpoint ID ; goes through USFS dispatch to request and coordinate (note min LZ 100'x 100' days)					
Short Haul or Hoist/Agency Helo	(208)772-3283 USFS dispatch	USFS Coeur d Alene Dispatch Note – A2G for helicopter evac is Ch 15 'EMS'					
5. Hospitals							
Name Complete Address	GPS Datum – WGS 84 Coordinate Standard Degrees Decimal Minutes	Travel Time		Phone	Helipad		Level of Care Facility
	Lat: 47 45.658 N Long: 116 47 41.684W	15 min	30 min	208-625-4000	<input checked="" type="checkbox"/>	<input type="checkbox"/>	Level 2 Trauma
<b>Kootenai General Hospital</b> 2003 Kootenai Health Way, Coeur d'Alene, ID							
<b>Bonner General Hospital</b> 520 N Third Ave, Sandpoint, ID	Lat: 48 16.650 Long: 116 32.92	15 min	60 min	208-263-1441	<input checked="" type="checkbox"/>	<input type="checkbox"/>	Level 4 Trauma
<b>Sacred Heart Medical</b> 101 W Eighth Ave, Spokane, WA	Lat: 47 38.500 Long: 117 24.800	25 min	120 min	509-474-3131	<input checked="" type="checkbox"/>	<input type="checkbox"/>	Level 2 Trauma
<b>Harborview Medical Center</b> Seattle, WA	Lat: 47 36.238 Long: 122 19.461	120 min	300 min	206-744-3074 206-744-5735 Burn center #	<input checked="" type="checkbox"/>	<input type="checkbox"/>	Level 1 Trauma & Burn Center
<b>Northwest Urgent Care</b> 7173 E Super 1 Loop Suite A Athol, ID Intersection of 54 & 95	Lat: 47.950879 Long: -116.694570 <b>(NO HELIPAD)</b>		10 min	208-561-9970	<input type="checkbox"/>	<input checked="" type="checkbox"/>	Urgent care only Hours: 0800-1800 M-F 0800-1600 S-S
6. Division   Branch   Group	Area Location Capability						
<b>A/E</b>	Resources assigned this period	RO#	Designator	Leader	# Crew	Phone	
		0-244	REMS Ranger MT Rescuc	Lahti	4	(360) 908-3314	
		0-221	EMPF	Ratti	1	(775) 815-4217	
		0-224	EMTF	Roy	1	(707) 508-9620	
		E-122	Amb1 ALS-ID88IN Idaho Falls FD FD#847	Wood	2	(208) 520-3695	
	EMS Responders & Capability:		ALS Ambulance, REMS, and single resource EMPF, EMTF				
Medical Emergency Channel:		Cedar Peak					
ETA for Ambulance to Scene:		Air : 30 min ground 10 min to former A/Z break					
Approved helispots		H 70: same as DP70, needs dust abatement, clear vehicles, type 3 only H 74: south DP73,type 1 capable H 90: perimeter near DP 95,dust abatement needed, type 3 only H 50: in the BLACK/fire interior, type 3 only H 65: along 206 road N, type 3 currently H 68 north of spike camp ,type 2					



# MEDICAL PLAN (ICS 206 WF)

## Controlled Unclassified Information//Basic

<b>K</b>	Resources assigned this period:	RO#	Designator	Leader	# Crew	Phone	
		0-172	EMPF North Forks Medics	Wallace	1	(406) 239-1811	
	EMS Responders & Capability:	Single resource EMPF					
	Equipment Available at Scene:						
	Medical Emergency Channel	Cedar Peak					
	ETA for Ambulance	Air: 30 min 45 min ground					
Approved Helispot Lat: Long:	H 44: Near DP 44, dust abatement needed, vehicles clear, type 2 H 48: type 3 currently						
<b>Z</b>	Resources assigned this period:	RO#	Designator	Leader	# Crew	Phone	
		0-210	EMTF	Dowd	1	(970) 231-1796	
		E-80	RAT MESU Kootenai Fire and Rescue	Wagner	2	(208) 659-3693	
		E-155	Amb1 ALS Boundary	Rinella	2	(208) 715-5038	
	EMS Responders & Capability:	RAT, ALS Ambulance, single resource EMTF					
	Equipment Available on Scene:						
	Medical Emergency Channel:	Cedar Peak					
	ETA for Ambulance to Scene:	Air 30 min ground 10 min to K/Z break					
Approved Helispot:	H 1: Near ICP, two type2 or one type 1 H 10: Hayden Creek Staging, dust abatement needed, watch for FOD, type 1 H 36: private, no LUA, type 1 H 37: repeater site, type 3 only H 44: near DP44, dust abatement needed, vehicles cleared, type 2						
<b>Structure Protection/ IA</b>	Resources assigned this period:	RO#	Designator	Leader	# Crew	Phone	
		0-223	AEMF	Haas	1	(406) 579-2951	
	EMS Responders & Capability:	Single resource AEMT					
	Equipment Available on Scene:						
	Medical Emergency Channel:	MT Monument or Cedar Peak (varies by location)					
	ETA for Ambulance to Scene:	Varies by location					
Approved Helispot:							
<b>7. Prepared By (Medical Unit Leader)</b>		<b>8. Date/Time</b>		<b>9. Reviewed By (Safety Officer)</b>		<b>10. Date/Time</b>	
Bart Walker MEDL		08/31/23 1650		Larry Holsomback SOF2 <i>Larry Holsomback SOF 2(T)</i>		8/31/23 1700	

## Ridge Creek Fire Contact List

Common Name	First Name	Last Name	Primary Phone	Common Name	First Name	Last Name	Primary Phone
INCIDENT COMMANDER	Deborah	Beard	850-524-9966	Operations			
INCIDENT COMMANDER	Marshall	Bentley	423-584-1682	OPERATIONS SECTION CHIEF	Matt	Johnson	870-415-0185
LIAISON OFFICER	Michael	Wright	970-819-2890	OPERATIONS SECTION CHIEF	Jason	Klawinsky	936-520-8827
LIAISON OFFICER	Jeremy	Edwardson	228-933-2585	OPERATIONS SECTION CHIEF	Jeffrey	Schardt	706-280-5498
PUBLIC INFORMATION OFFICER	Catherine	Hibbard	413-412-2959	OPERATIONS SECTION CHIEF	Shawn	Nagle	662-231-4024
PUBLIC INFORMATION OFFICER	Dick	Fleishman	928-853-4489	OPERATIONS BRANCH DIRECTOR	Brian	Elam	336-467-7254
PUBLIC INFORMATION OFFICER	Nate	Bogenschutz	801-244-0932	AIR OPERATIONS BRANCH DIRECTOR	Timothy	Elder	863-243-1438
PUBLIC INFORMATION OFFICER	Michelle	Burnett	803-920-6167	AIR SUPPORT GROUP SUPERVISOR	Nicholas	Holschbach	406-925-1737
SAFETY OFFICER	Larry	Holsomback	706 280 4716	AIR SUPPORT GROUP SUPERVISOR	Timothy	Lanterman	386-292-4049
SAFETY OFFICER	Buddy	Kelley	850-447-1344	DIVISION SUPERVISOR (A/E)	Greg	Salansky	865-414-6461
SAFETY OFFICER	Steve	Gray	770-655-8002	DIVISION SUPERVISOR (A/E)	Jordan	Collier	765-913-0790
SAFETY OFFICER	Danny	Gore	478-456-8516	DIVISION SUPERVISOR (K)	David	Gregory	208-784-3711
Plans				DIVISION SUPERVISOR (K)	Marshall	Myhre	208-819-5126
PLANNING SECTION CHIEF	Carol	O'Bryan	903-263-8704	DIVISION SUPERVISOR (Z)	Heath	Thomas	501-208-7077
PLANNING SECTION CHIEF	Thomas	Barrett	478-550-6372	DIVISION SUPERVISOR (Structure/IA)	Jared	Nobles	352-817-6915
PLANNING SECTION CHIEF	Kevin	Curry	732-684-2999	DIVISION SUPERVISOR (Structure/IA)	Todd	Bennett	864-429-6058
FIRE BEHAVIOR ANALYST	Kelly	Cagle	336-302-0343	DIVISION SUPERVISOR (Roads/Chipper)	Daniel	Johnson	719-480-9764
INCIDENT METEROLOGIST	Ryan	Flieman	740-525-1697	Logistics			
INCIDENT METEROLOGIST	Krista	Carrothers	509-688-4753	LOGISTICS SECTION CHIEF	Steve	Weherley	850-691-5923
DEMOBILIZATION UNIT LEADER	Jeffrey	DeMatteis	208-891-6074	LOGISTICS SECTION CHIEF	David	McVay	850-381-1669
INCIDENT TECHNICAL SUPPORT SPECIALIST	John	Edwards	850-766-3393	LOGISTICS SECTION CHIEF	Timothy	Exline	727-243-4144
INCIDENT TECHNICAL SUPPORT SPECIALIST	Yarmir Diaz	Rohweder	936-219-9898	LOGISTICS SECTION CHIEF	Todd	Waller	501-337-6308
INCIDENT TECHNICAL SUPPORT SPECIALIST	Bridgette	Webb	662-202-6210	MEDICAL UNIT LEADER	Kurt	Gainer	304-704-2970
DOCUMENTATION UNIT LEADER - V	Lisa	Spiess	601-812-7819	MEDICAL UNIT LEADER	Bart	Walker	352-203-9191
TRAINING SPECIALIST - V	Alton	Hoke	678-232-7107	FACILITIES UNIT LEADER	Lester	Kaiser	620-382-6180
TRAINING SPECIALIST - V	Lucas	Hunkler	912-464-7067	FACILITIES UNIT LEADER	Mark	Thornton	509-683-3746
RESOURCE UNIT LEADER	Melonie	Sellers	601-508-8997	BASE CAMP MANGER	Kathleen	Paiva	775-527-4516
RESOURCE UNIT LEADER - V	Jessica	Hollingsworth	601-966-0331	BASE CAMP MANGER (HUDLOW)	David	Brooks	303-495-4660
RESOURCE UNIT LEADER	Ethan	Robertson	678-552-7342	BASE CAMP MANGER (HUDLOW)	Tim	Crowell	270-836-6320
STATUS CHECK-IN RECORDER	Laura	Vann	404-626-7244	SUPPLY UNIT LEADER	Sandra	Rhodes	501-282-0085
SITUATION UNIT LEADER	Eric	Pullium	828-644-8966	RECEIVING/DISTRIBUTION MANAGER	Randall	Hamilton	606-344-9628
GIS SPECIALIST	Katherine	Bronson	352-408-3695	ORDERING MANAGER	Sherri	Kite	850-209-2150
GIS SPECIALIST	Hester	Mallonee	662-426-2423	FOOD UNIT LEADER	James	Lowe	540-529-0784
Finance				FOOD UNIT LEADER	Dan	Baker	719-205-0076
FINANCE SECTION CHIEF	Jason	Gillis	912-314-9233	COMMUNICATIONS UNIT LEADER	David	Radzivil	954-553-6553
FINANCE SECTION CHIEF	Marlene	Hudson	803-563-3277	GROUND SUPPORT UNIT LEADER	Brian	Truss	936-546-4338
FINANCE SECTION CHIEF	Reggie	Lanier Jr	912-314-1085	GROUND SUPPORT UNIT LEADER (HUDLOW)	Angela	Parrish	540-553-6356
TIME UNIT LEADER - V	Donna	Bentley	706-474-3216	EQUIPMENT MANGER	Doug	Stover	541-297-5902
TIME UNIT LEADER - V	Brandon	Brown	423-557-3490				
COST UNIT LEADER	Stacey	Eaton	850-544-0438				
COST UNIT LEADER	Tom	Steele	770-363-3583				
COMPENSATION/CLAIMS UNIT LDR - V	Terri	McDonald	352-454-5385				

V - Virtual

# Human Resource Message

The mission of the Gold Team is to safely, effectively and efficiently manage the Ridge Creek Fire by maintaining a team of skilled and productive personnel. During this incident we will strive to successfully complete our mission and achieve our objectives while creating a positive, work environment for all assigned incident personnel. Consumption of drugs that alter decision making abilities on the job, such as marijuana and alcohol, is prohibited. The Gold Team fully supports every assigned personnel's right to have a safe and enjoyable assignment. ANY form of harassment or discrimination will not be tolerated. All inappropriate behavior will be dealt with promptly. Disciplinary action and reporting back to an individual's home unit will be initiated as necessary.

Please report any incidents of inappropriate behavior to your supervisor or any member of the Gold Team

*Debbie Beard*, Incident Commander



# Finance Message

## THINGS TO REMEMBER

- IF YOU ARE ASSIGNED TO "DIVISION K", PLEASE NOTE THIS IN THE REMARKS ON YOUR CTR'S OR SHIFT TICKETS
- PLEASE ENSURE THAT YOUR CTR'S AND SHIFT TICKETS HAVE YOUR RESOURCE ORDER NUMBER and DATE

FOR ASSISTANCE WITH CLAIMS, PLEASE CONTACT TERRI MCDONALD AT [terri\\_mcdonald@firenet.gov](mailto:terri_mcdonald@firenet.gov), or leave a voice mail at 352-454-5385.

[2023.ridgecreek.finance@firenet.gov](mailto:2023.ridgecreek.finance@firenet.gov)



**ALL RESOURCES ARE WELCOME TO HAVE A IN-PERSON FINANCE DEMOB**

**But if you prefer remote Finance demob, please follow directions below**

### **\*\*\*\* REMOTE DEMOB FOR HUDLOW SPIKE CAMP \*\*\*\***

ANY RESOURCES WANTING TO REMOTE DEMOB FROM HUDLOW SPIKE CAMP,  
PLEASE SEE ITSS - JOHN EDWARDS, LOCATED ON SITE IN ITSS-YURK.  
RESOURCES CAN DEMOB ANYTIME BETWEEN 1000 TO 1400.

### **\*\*\*\* REMOTE DEMOB FOR BASE CAMP \*\*\*\***

PLEASE SCAN THE QR CODE ABOVE. SEND AN EMAIL WITH YOUR CONTACT INFORMATION REQUESTING REMOTE DEMOB. A FINANCE SPECIALIST WILL CALL YOU BACK AND WALK YOU THROUGH THE PROCESS.

# Limited contact Demob process is Available

- **Note your demob date listed in the IAP. Inform your incident supervisor if that date is wrong, so they can contact demob/checkin to update.**
- Crew Swaps - If you have relief operators replacing operators, use the QR code below. We will adjust the last work day for that equipment.
- Air Travel – Use the QR code below or call demob to schedule a flight. Please do this at least 3 days before your demob date. You may need to plan on an early departure on your last work day for an RON at your departure airport in order to travel on your DEMOB date.
- Driving home – Use the QR code below to provide travel info before leaving ICP to travel home. **We need you to provide your ETD/ETA, and RON city, if taking more than one day to drive home.**

**Steps to take when checking out during Demob, no checkout sheet required:**

*Feel free to stop by any Section or Unit if you need assistance.*

1. All CTR and Shift Tickets should be turned in before initiating the demob process.
2. Return all property to Supply and/or Communications; they will notify demob that you returned all items.
3. Have equipment inspected at Ground Support and submit inspection form to finance as required.
4. If you are a trainee see the Training Message to close out with the Training Specialist..
5. FINALIZE your OF-288/OF-286 with Finance; they will notify demob that you are cleared.
6. Go through Weed Wash on your way out of camp, they will notify demob, no need to return to ICP. Be sure to submit travel info using QR code below.

**Demob Contact:** 208-891-6074

Email: [2023.ridgecreek.demob@firenet.gov](mailto:2023.ridgecreek.demob@firenet.gov)

Air Travel



Driving



Crew Swap



# Tentative Release Schedule

**09/01/23**

## Overhead

O-188	DMOB	CHRISTOPHER, WENDY F
O-196	SEC1	EDWARDS, MICAH V

**09/02/23**

## Crews

C-32	CRW2	DUST BUSTERS
C-33	CRW2	DUST BUSTERS

## Equipment

E-2	EXC2	FOUSTS 35653
E-179	ENG6	MERVIN BISHOP
E-180	ENG6	MERVIN BISHOP
E-181	ENG6	MERVIN BISHOP

## Overhead

O-199	TFLD	TEAGUE, BURRELL L
O-200	TFLD	DOYLE, ERIN R
O-226	RCDM	EKE, JAYD
O-292	EQPM	STOVER, DOUGLAS RAY

**09/03/23**

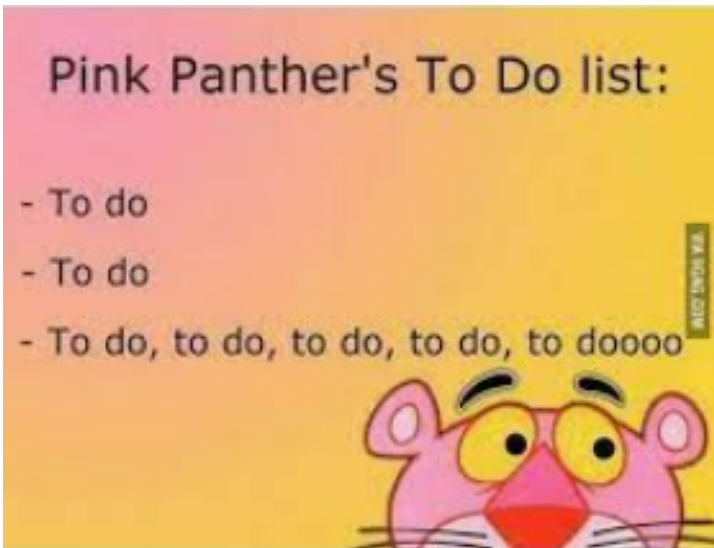
## Equipment

E-3	WTS2	ST FLORIAN FORESTRY
E-4	WTS2	CRAIG MARTIN
E-174	ENG6	STARKCORP

## Overhead

O-135	RADO	EDISON, MATTHEW WAYNE
O-148	DRIV	WELBOURN, DOUGLAS RANKIN
O-204	STEN	MCAHREN, JASON
O-208	SEC1	CONWAY, MATTHEW WAYNE

# Training Message



**Make sure checking out with the Incident Training Specialist is on your To Do List**

If you are a trainee or working on a position Task Book (PTB) be sure to Check-in and Check-out with one the Incident Training Specialist!

## To Do List for Trainees Demobing

1. Ensure your trainer(s)/evaluator(s) has/have initialed completed tasks in your PTB;
2. If evaluator initialed #1 on your Evaluation Record, ensure he/she signs as final evaluator (located on the backside of your PTB cover page);
3. *Email all documentation (including Evaluation Record sheet in back of your taskbok, ICS 225 or ICS226 when appropriate) to one of the TNSP's listed below.*

Lucas Hunkler, TNSP(t) 912-464-7067  
lucas\_hunkler@nps.gov

or Al Hoke, TNSP 678 232-7107  
al\_hoke@firenet.gov

### Check-in



### Check-out





# Ridge Creek

## Documentation Process



1. Name files in accordance with the standardized NWCG naming conventions:

**{DocType}\_{Version}\_{Date}\_{IncidentNumber}**

**EXAMPLE: UNIT DAILY LOGS – ICS 214**

**214\_SpiessLisa\_20230825\_000447**

**EXAMPLE: GENERAL MESSAGES – ICS 213**

**213\_DOCL\_Spiess\_20230825\_000447**

**\*Reminder: For 213's, use SENDER's UNIT NAME and SENDER's Last Name if known**

2. Upload your files in one of two ways:

A. Drop them daily into the [eDoc INBOX](#) in Teams, General Channel files, or use [SharePoint](#) location.

B. Email them daily to [2023.ridgecreek.docs@firenet.gov](mailto:2023.ridgecreek.docs@firenet.gov)

All documentation will be filed electronically in TEAMS. There are no paper copies or paper doc boxes. If you need to scan files, there is one available in the Plans room at ICP. Not sure which documents are Permanent Records? Check out page 4 of [PMS 277](#).  
If you have questions about what to file or how, please reach out!

**Need help? Ask!**







**Lisa Spiess – Virtual DOCL-t**

**[lisa\\_spiess@firenet.gov](mailto:lisa_spiess@firenet.gov) or 601-812-7819**

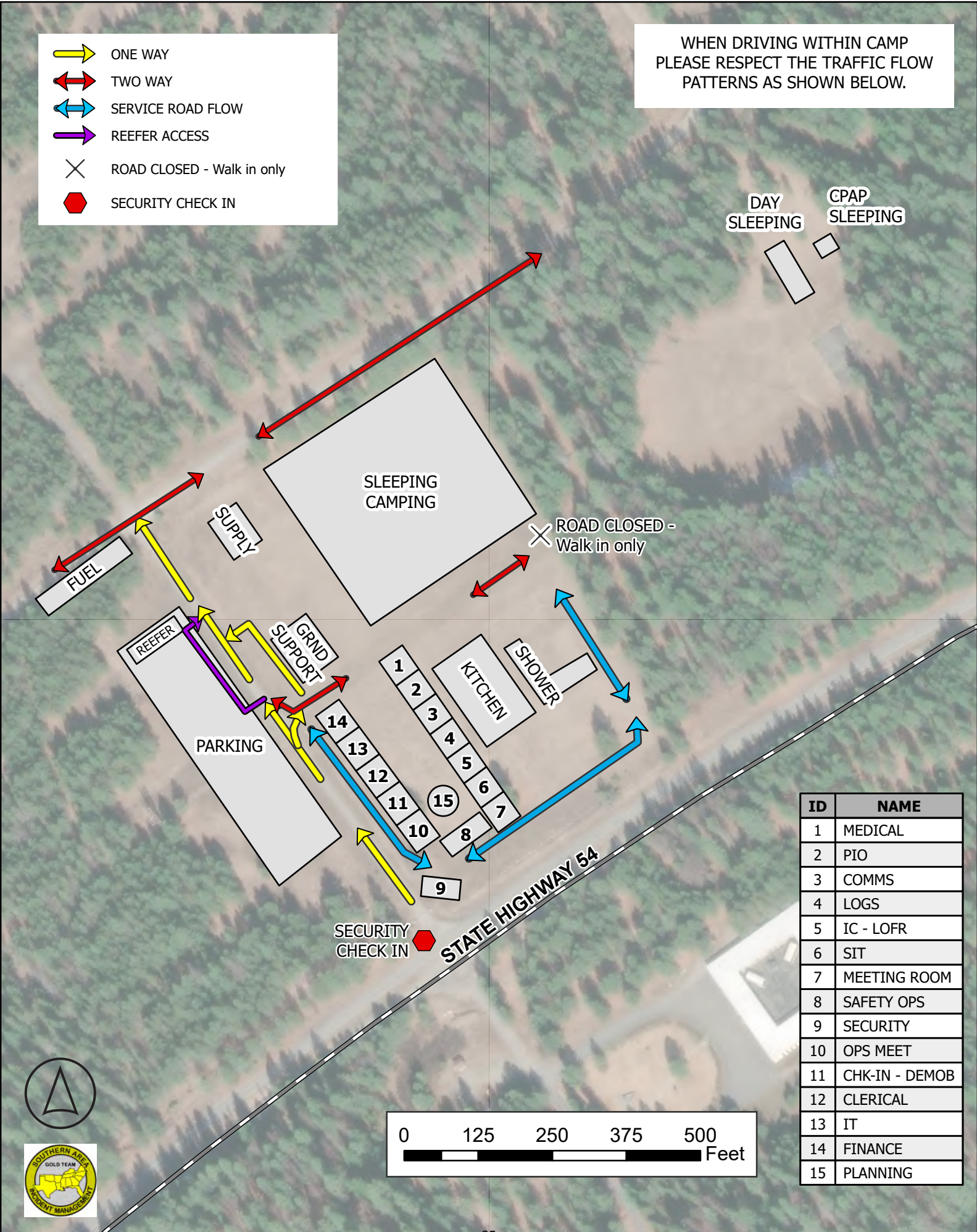
**You can also catch me in Teams chat!**





-  ONE WAY
-  TWO WAY
-  SERVICE ROAD FLOW
-  REEFER ACCESS
-  ROAD CLOSED - Walk in only
-  SECURITY CHECK IN

WHEN DRIVING WITHIN CAMP PLEASE RESPECT THE TRAFFIC FLOW PATTERNS AS SHOWN BELOW.



DAY SLEEPING  
CPAP SLEEPING

SUPPLY

SLEEPING CAMPING

ROAD CLOSED - Walk in only

FUEL

REEFER

GRND SUPPORT

PARKING

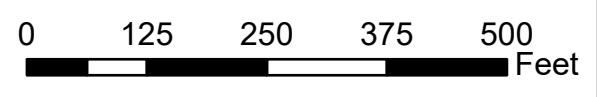
KITCHEN

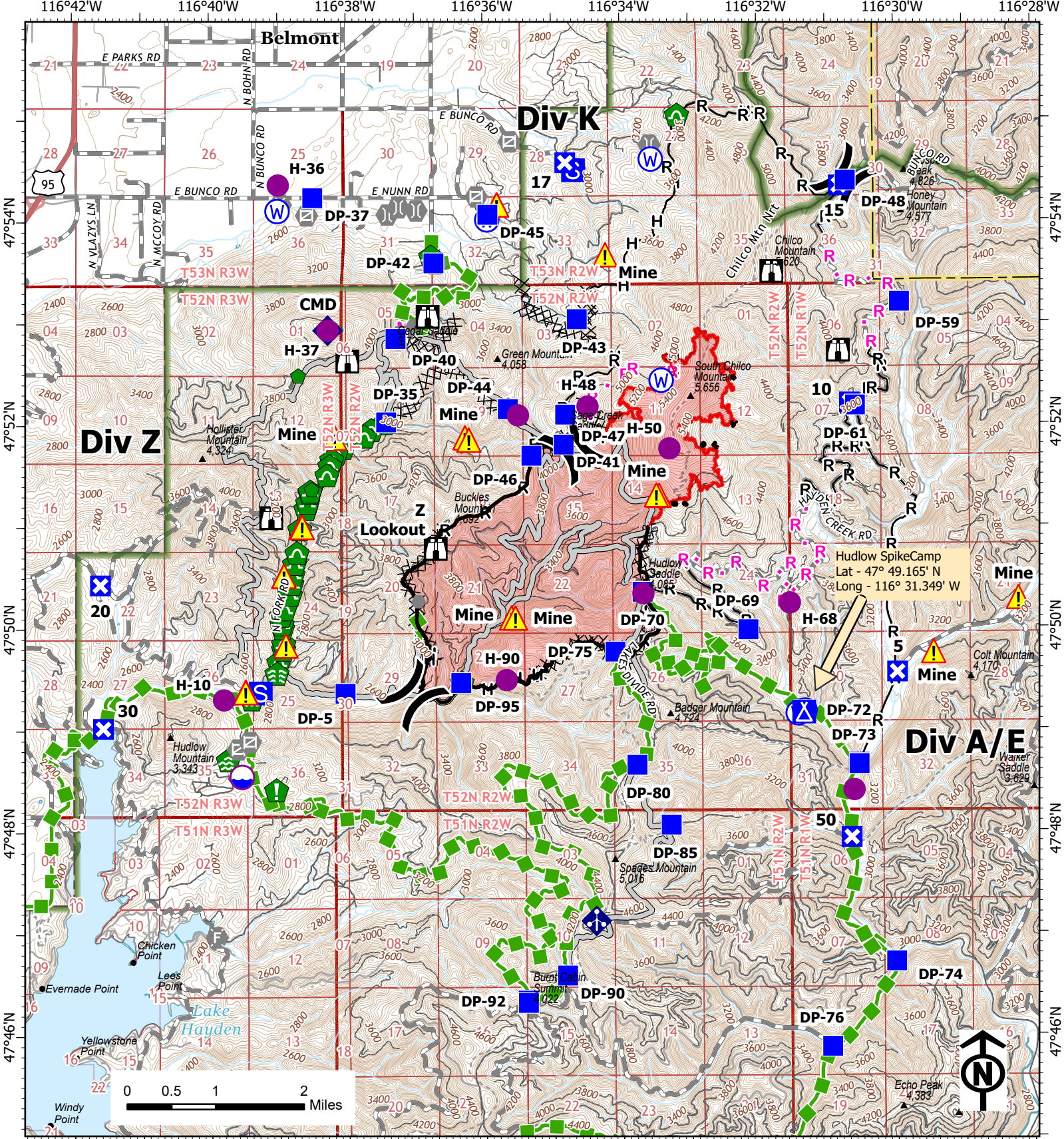
SHOWER

SECURITY CHECK IN

STATE HIGHWAY 54

ID	NAME
1	MEDICAL
2	PIO
3	COMMS
4	LOGS
5	IC - LOFR
6	SIT
7	MEETING ROOM
8	SAFETY OPS
9	SECURITY
10	OPS MEET
11	CHK-IN - DEMOB
12	CLERICAL
13	IT
14	FINANCE
15	PLANNING





**IAP**  
**RIDGE CREEK**  
**ID-IPF-000447**  
**09/01/2023 Day**  
 4474 acres at 8/29/2023 0049hrs  
 Acres from IR  
 Date Exported: 8/31/2023 4:44 PM

- |                    |                                   |                                     |                                   |
|--------------------|-----------------------------------|-------------------------------------|-----------------------------------|
| ( ) Division Break | ● Other                           | 🚧 Culvert                           | H Planned Hand Line               |
| 📍 Dip Site         | 🚪 Gate                            | 📡 Mobile Weather Unit               | M Planned Mixed Construction Line |
| 🟣 Helispot         | 🔥 Fire Station                    | 📡 Repeater                          | R Planned Road as Line            |
| 🔵 Drop Point       | 🌉 Bridge                          | ⚠ Hazard                            | — Access or Improved Road         |
| 🔴 Closure          | 🏠 Water Development or Draft Site | 🌊 Water Source                      | - - - Other                       |
| 🏕 Camp             | 🌳 Stream Crossing                 | ⊗ Completed Dozer Line              | 🟢 Escape Route                    |
| 📍 Staging Area     | 📍 Resource Location               | H Completed Hand Line               | — Contained                       |
| 🏠 Lookout          | 📍 Repair Point                    | M Completed Mixed Construction Line | — Uncontained                     |
| 📍 Value at Risk    | 📍 Landing or Log Deck             | R Completed Road as Line            | 🔴 Wildfire Daily Fire Perimet     |





# MEDICAL PLAN (ICS 206 WF)

Controlled Unclassified Information//Basic

## Medical Incident Report

**FOR A NON-EMERGENCY INCIDENT, WORK THROUGH CHAIN OF COMMAND TO REPORT AND TRANSPORT INJURED PERSONNEL AS NECESSARY.**

**FOR A MEDICAL EMERGENCY: IDENTIFY ON-SCENE INCIDENT COMMANDER BY NAME AND POSITION AND ANNOUNCE "MEDICAL EMERGENCY" TO INITIATE RESPONSE FROM IMT COMMUNICATIONS/DISPATCH.**

**Use the following items to communicate situation to communications/dispatch.**

**1. CONTACT COMMUNICATIONS / DISPATCH** (Verify correct frequency prior to starting report)

*Ex: "Communications, Div. Alpha. Stand-by for Emergency Traffic."*

**2. INCIDENT STATUS:** Provide incident summary (including number of patients) and command structure.

*Ex: "Communications, I have a Red priority patient, unconscious, struck by a falling tree. Requesting air ambulance to Forest Road 1 at (Lat./Long.) This will be the Trout Meadow Medical, IC is TFLD Jones. EMT Smith is providing medical care."*

Severity of Emergency / Transport Priority	<input type="checkbox"/> <b>RED / PRIORITY 1 Life or limb threatening injury or illness. Evacuation need is IMMEDIATE</b> <i>Ex: Unconscious, difficulty breathing, bleeding severely, 2° – 3° burns more than 4 palm sizes, heat stroke, disoriented.</i> <input type="checkbox"/> <b>YELLOW / PRIORITY 2 Serious Injury or illness. Evacuation may be DELAYED if necessary.</b> <i>Ex: Significant trauma, unable to walk, 2° – 3° burns not more than 1-3 palm sizes.</i> <input type="checkbox"/> <b>GREEN / PRIORITY 3 Minor Injury or illness. Non-Emergency transport</b> <i>Ex: Sprains, strains, minor heat-related illness.</i>	
Nature of Injury or Illness & Mechanism of Injury		Brief Summary of Injury or Illness <i>(Ex: Unconscious, Struck by Falling Tree)</i>
Evacuation Request		Air Ambulance / Short Haul/Hoist Ground Ambulance / Other
Patient Location		Descriptive Location & Lat. / Long. (WGS84)
Incident Name		Geographic Name + Medical <i>(Ex: Trout Meadow Medical)</i>
On-Scene Incident Commander		Name of on-scene IC of Incident within an Incident <i>(Ex: TFLD Jones)</i>
Patient Care		Name of Care Provider <i>(Ex: EMT Smith)</i>

**3. INITIAL PATIENT ASSESSMENT:** Complete this section for each patient as applicable (start with the most severe patient)

Patient Assessment: See IRPG PAGE 106

Treatment:

**4. EVACUATION PLAN:**

Evacuation Location (if different): (Descriptive Location (drop point, intersection, etc.) or Lat. / Long.) Patient's ETA to Evacuation Location: Click or tap here to enter text.

Helispot / Extraction Site Size and Hazards:

**5. ADDITIONAL RESOURCES / EQUIPMENT NEEDS:**

*Example: Paramedic/EMT, crews, immobilization devices, AED, oxygen, trauma bag, IV/fluid(s), splints, rope rescue, wheeled litter, HAZMAT, extrication*

**6. COMMUNICATIONS: Identify State Air/Ground EMS Frequencies and Hospital Contacts as applicable**

Function	Channel Name/Number	Receive (RX)	Tone/NAC *	Transmit (TX)	Tone/NAC *
COMMAND					
AIR-TO-GRND					
TACTICAL					

**7. CONTINGENCY: Considerations:** If primary options fail, what actions can be implemented in conjunction with primary evacuation method? Be thinking ahead..

**8. ADDITIONAL INFORMATION:** Updates/Changes, etc.

**REMEMBER:** Confirm ETA's of resources ordered. Act according to your level of training. Be Alert. Keep Calm. Think Clearly. Act Decisively.