





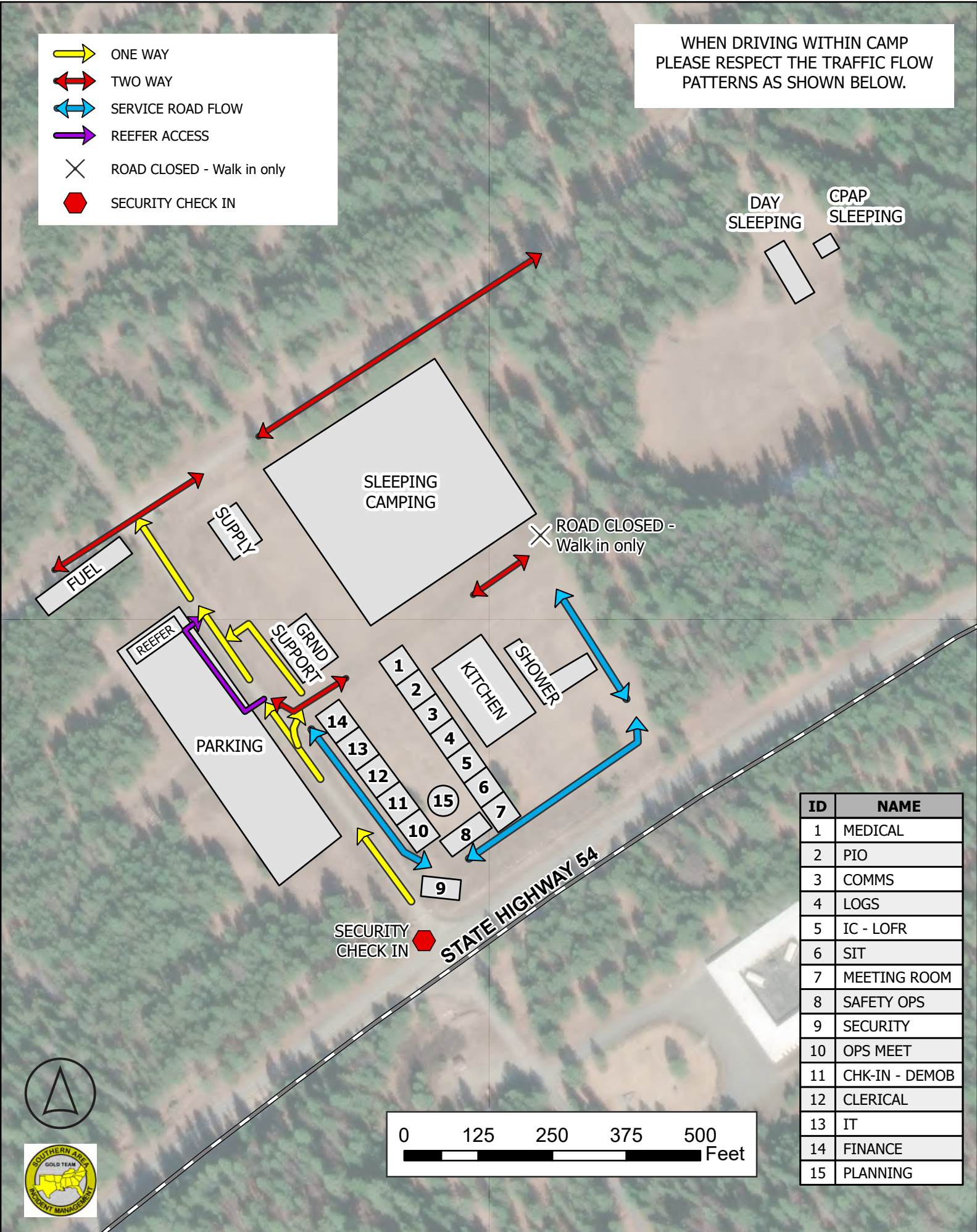


-  ONE WAY
-  TWO WAY
-  SERVICE ROAD FLOW
-  REEFER ACCESS
-  ROAD CLOSED - Walk in only
-  SECURITY CHECK IN

WHEN DRIVING WITHIN CAMP PLEASE RESPECT THE TRAFFIC FLOW PATTERNS AS SHOWN BELOW.



DAY SLEEPING  
CPAP SLEEPING

SLEEPING CAMPING

ROAD CLOSED - Walk in only

FUEL

SUPPLY

REEFER

GRND SUPPORT

PARKING

14 13 12 11 10 9

1 2 3 4 5 6 7

KITCHEN

SHOWER

15

8

SECURITY CHECK IN

STATE HIGHWAY 54

ID	NAME
1	MEDICAL
2	PIO
3	COMMS
4	LOGS
5	IC - LOFR
6	SIT
7	MEETING ROOM
8	SAFETY OPS
9	SECURITY
10	OPS MEET
11	CHK-IN - DEMOB
12	CLERICAL
13	IT
14	FINANCE
15	PLANNING

