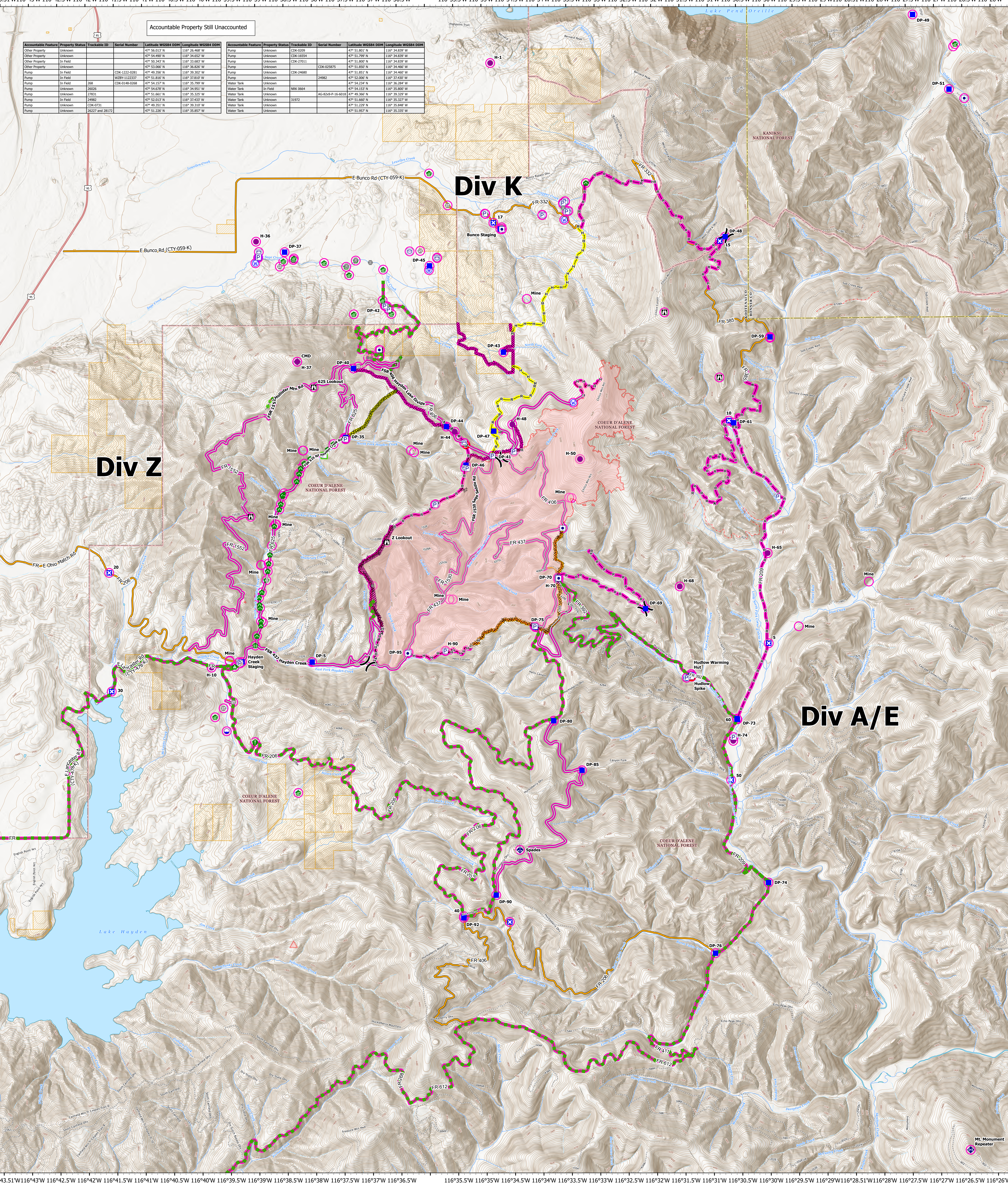


116°43.51'W 116°43'W 116°42.5'W 116°42'W 116°41.5'W 116°41'W 116°40.5'W 116°40'W 116°39.5'W 116°39'W 116°38.5'W 116°38'W 116°37.5'W 116°37'W 116°36.5'W 116°35.5'W 116°35'W 116°34.5'W 116°34'W 116°33.5'W 116°33'W 116°32.5'W 116°32'W 116°31.5'W 116°31'W 116°30.5'W 116°30'W 116°29.5'W 116°29'W 116°28.5'W 116°28'W 116°27.5'W 116°27'W 116°26.5'W 116°26'W

Accountable Feature	Property Status	Trackable ID	Serial Number	Latitude WGS84 DDM	Longitude WGS84 DDM	Accountable Feature	Property Status	Trackable ID	Serial Number	Latitude WGS84 DDM	Longitude WGS84 DDM
Other Property	Unknown			47° 56.013' N	116° 36.468' W	Pump	Unknown	CDK-0209		47° 51.801' N	116° 34.839' W
Other Property	Unknown			47° 54.897' N	116° 34.632' W	Pump	Unknown	CDK-16554		47° 51.799' N	116° 34.839' W
Other Property	In Field			47° 50.343' N	116° 33.685' W	Pump	Unknown	CDK-27011		47° 51.800' N	116° 34.839' W
Other Property	Unknown			47° 53.966' N	116° 36.820' W	Pump	Unknown	CDK-02585		47° 51.800' N	116° 34.466' W
Pump	In Field		CDK-1222-0281	47° 49.356' N	116° 39.302' W	Pump	Unknown	CDK-24680	24962	47° 51.851' N	116° 34.466' W
Pump	In Field		W289-112237	47° 51.816' N	116° 37.810' W	Water Tank	Unknown			47° 52.006' N	116° 37.400' W
Pump	In Field		CDK-048-0208	47° 54.137' N	116° 35.799' W	Water Tank	Unknown			47° 54.234' N	116° 34.284' W
Pump	Unknown		26226	47° 54.678' N	116° 34.951' W	Water Tank	In Field	NRX 0664		47° 54.153' N	116° 35.800' W
Pump	Unknown		27831	47° 51.661' N	116° 35.325' W	Water Tank	Unknown	AG-824P-16-6018		47° 49.366' N	116° 39.329' W
Pump	In Field		24983	47° 52.012' N	116° 37.433' W	Water Tank	Unknown	31972		47° 51.660' N	116° 35.327' W
Pump	Unknown		CDK-0731	47° 49.351' N	116° 39.310' W	Water Tank	Unknown			47° 51.229' N	116° 35.948' W
Pump	Unknown		26227 and 28172	47° 51.226' N	116° 35.857' W	Water Tank	Unknown			47° 51.957' N	116° 35.335' W



Div Z

Div K

Div A/E

RIDGE CREEK ID-IPF-000447

4474 acres at 8/29/2023 0049hrs

Acres from IR North American 1983 Datum. LatLong Grid

Date Exported: 9/1/2023 7:18 PM

- Repair Status**
- In Use - Fire Management
  - Needs Assessment
  - Repair Needed
  - Completed - Inspected
  - In Use - Fire Management
  - Repair Needed
  - Completed - Ready for Inspection
  - In Use - Fire Management
  - In Progress
  - Completed - Ready for Inspection
  - Completed - Inspected
- Other Property**
- Pump
  - Water Tank
  - Dip Site
  - Helispot
  - Division Break
  - Drop Point
  - Closure
- Camp**
- Staging Area
  - Lookout
  - Value at Risk
  - Other
  - Gate
  - Bridge
  - Water Development or Draft Site
  - Stream Crossing
- Resource Location**
- Repair Point
  - Landing or Log Deck
  - Culvert
  - Mobile Weather Unit
  - Repeater
  - Water Source
  - Completed Dozer Line
  - Completed Hand Line
- Completed Mixed Construction Line**
- Completed Road as Line
  - Access or Improved Road
  - Other
  - Repair Line
  - Escape Route
  - Wildfire Daily Fire Perimeter

