





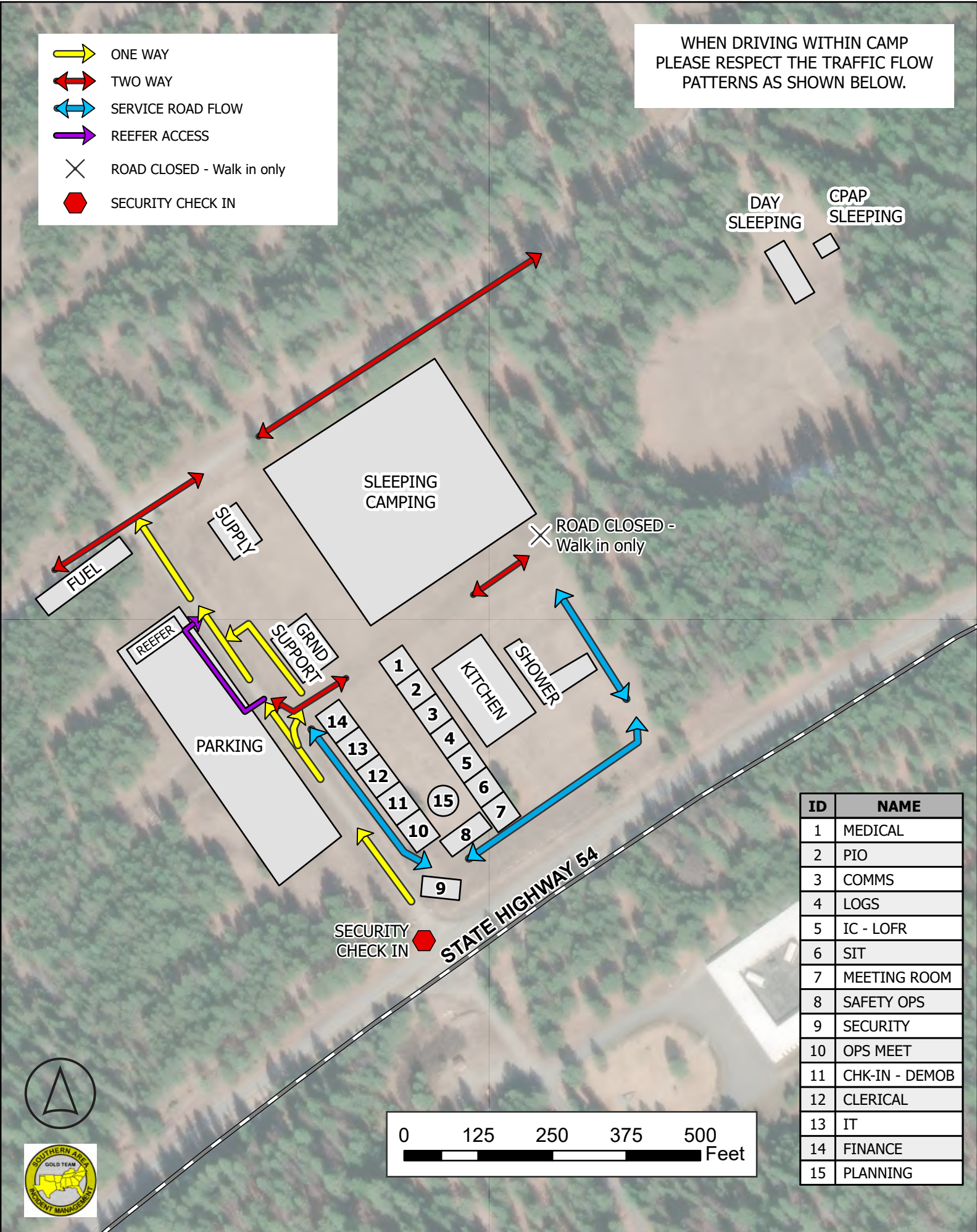


-  ONE WAY
-  TWO WAY
-  SERVICE ROAD FLOW
-  REEFER ACCESS
-  ROAD CLOSED - Walk in only
-  SECURITY CHECK IN

WHEN DRIVING WITHIN CAMP PLEASE RESPECT THE TRAFFIC FLOW PATTERNS AS SHOWN BELOW.



DAY SLEEPING CPAP SLEEPING

SLEEPING CAMPING

ROAD CLOSED - Walk in only

FUEL SUPPLY

REEFER GRND SUPPORT

PARKING

1 2 3 4 5 6 7

8 9 10 11 12 13 14 15

KITCHEN SHOWER

STATE HIGHWAY 54

SECURITY CHECK IN

ID	NAME
1	MEDICAL
2	PIO
3	COMMS
4	LOGS
5	IC - LOFR
6	SIT
7	MEETING ROOM
8	SAFETY OPS
9	SECURITY
10	OPS MEET
11	CHK-IN - DEMOB
12	CLERICAL
13	IT
14	FINANCE
15	PLANNING

