





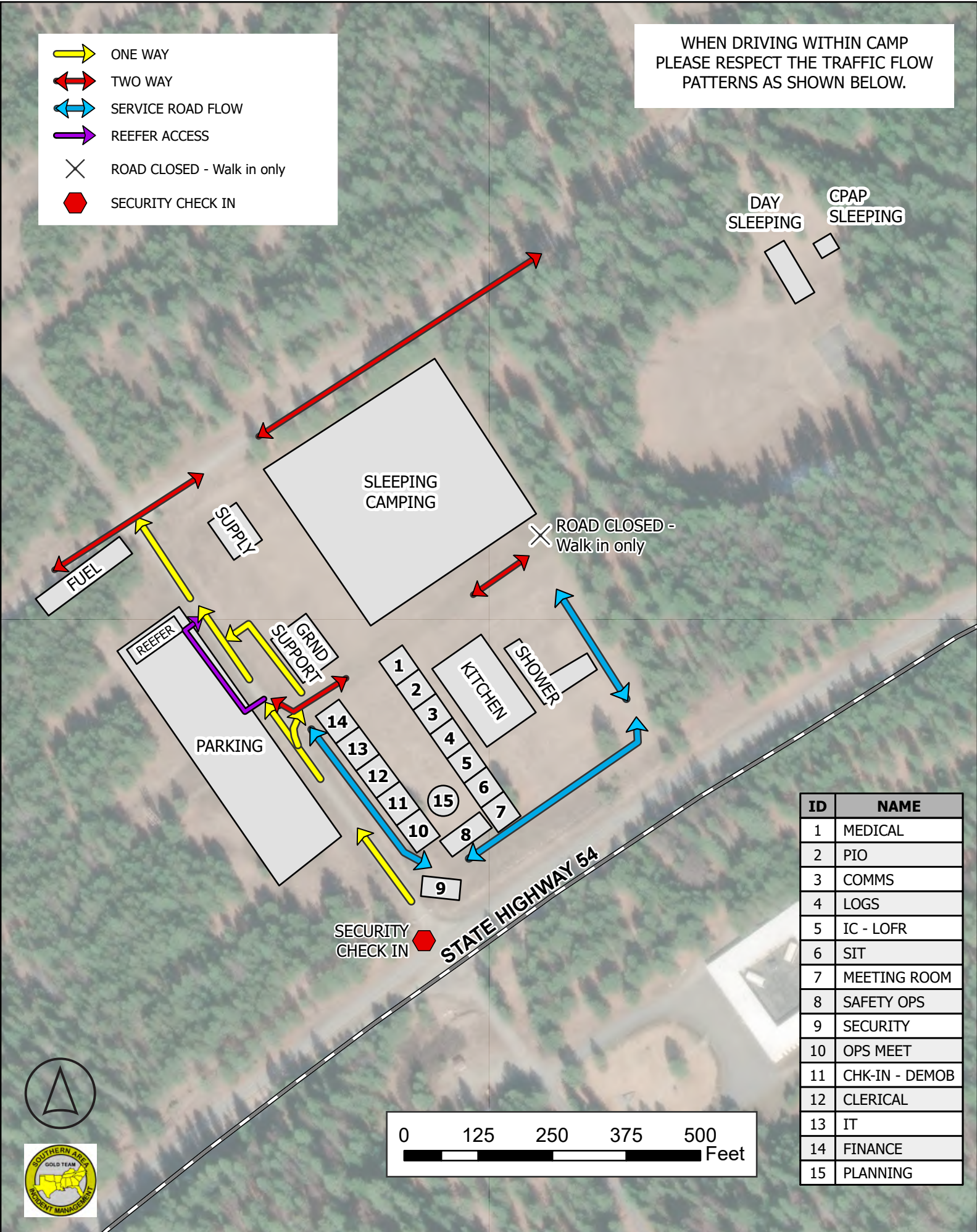


-  ONE WAY
-  TWO WAY
-  SERVICE ROAD FLOW
-  REEFER ACCESS
-  ROAD CLOSED - Walk in only
-  SECURITY CHECK IN

WHEN DRIVING WITHIN CAMP PLEASE RESPECT THE TRAFFIC FLOW PATTERNS AS SHOWN BELOW.



DAY SLEEPING  
CPAP SLEEPING

SLEEPING CAMPING

ROAD CLOSED -  
Walk in only

FUEL  
SUPPLY  
REEFER  
GRND SUPPORT  
PARKING

1  
2  
3  
4  
5  
6  
7  
8  
9  
10  
11  
12  
13  
14  
15  
KITCHEN  
SHOWER

SECURITY CHECK IN

STATE HIGHWAY 54

ID	NAME
1	MEDICAL
2	PIO
3	COMMS
4	LOGS
5	IC - LOFR
6	SIT
7	MEETING ROOM
8	SAFETY OPS
9	SECURITY
10	OPS MEET
11	CHK-IN - DEMOB
12	CLERICAL
13	IT
14	FINANCE
15	PLANNING

