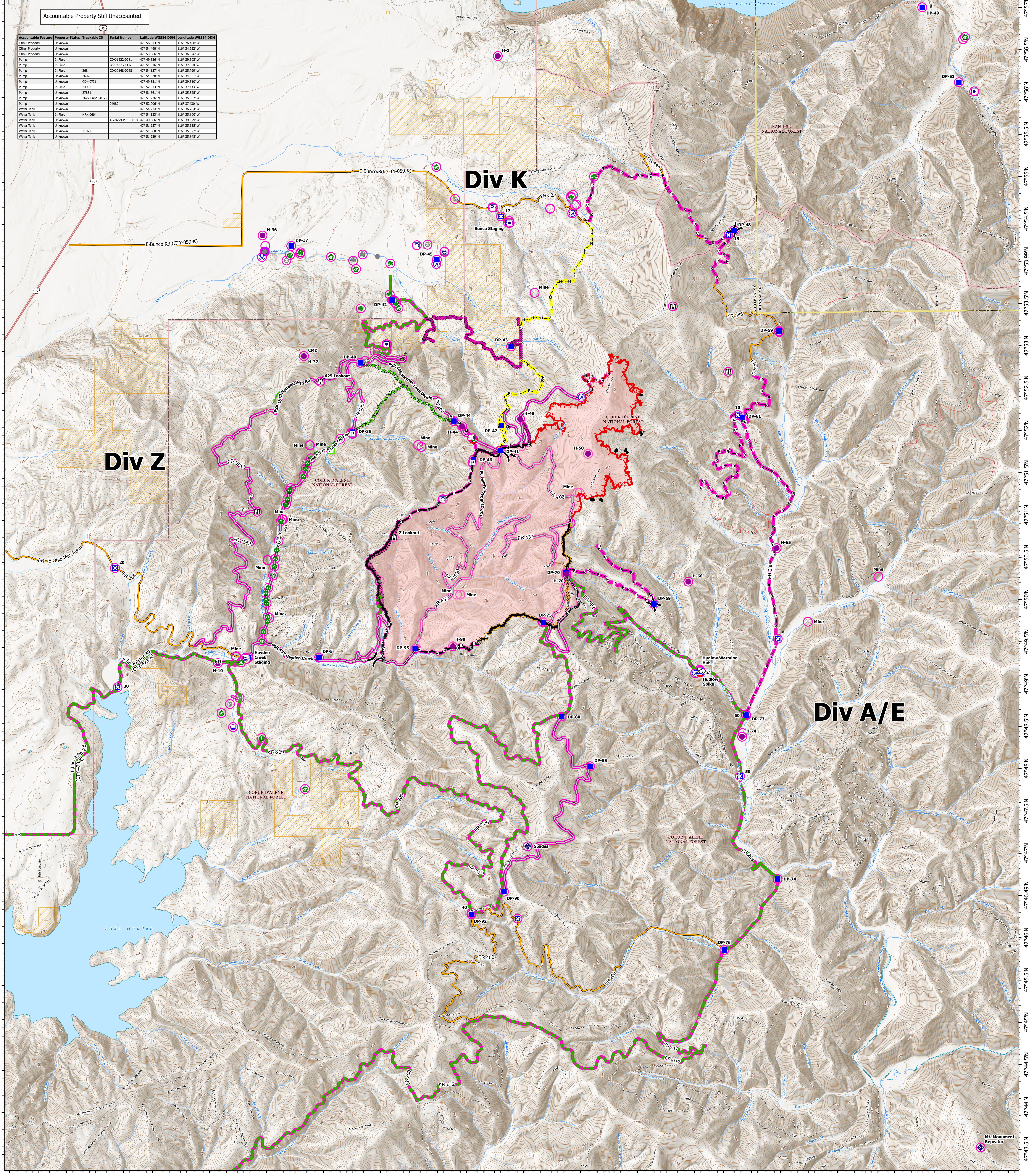


116°43.51'W 116°43'W 116°42.5'W 116°42'W 116°41.5'W 116°41'W 116°40.5'W 116°40'W 116°39.5'W 116°39'W 116°38.5'W 116°38'W 116°37.5'W 116°37'W 116°36.5'W 116°35.5'W 116°35'W 116°34.5'W 116°34'W 116°33.5'W 116°33'W 116°32.5'W 116°32'W 116°31.5'W 116°31'W 116°30.5'W 116°30'W 116°29.5'W 116°29'W 116°28.5'W 116°28'W 116°27.5'W 116°27'W 116°26.5'W 116°26'W

Accountable Property Still Unaccounted

Accountable Feature	Property Status	Trackable ID	Serial Number	Latitude WGS84 DDM	Longitude WGS84 DDM
Other Property	Unknown			47° 56.013' N	116° 26.460' W
Other Property	Unknown			47° 54.600' N	116° 34.652' W
Other Property	Unknown			47° 53.200' N	116° 36.800' W
Pump	In Field		CDK-1223-0081	47° 49.350' N	116° 39.300' W
Pump	In Field	208	WZB-1122337	47° 51.810' N	116° 37.810' W
Pump	In Field	2026	CDK-0148-0208	47° 54.137' N	116° 32.700' W
Pump	Unknown			47° 54.570' N	116° 34.570' W
Pump	Unknown		CDK-0731	47° 49.351' N	116° 39.310' W
Pump	In Field	2482		47° 52.013' N	116° 37.413' W
Pump	Unknown			47° 51.600' N	116° 35.200' W
Pump	Unknown		2027 and 2812	47° 51.220' N	116° 35.857' W
Pump	Unknown		2482	47° 52.000' N	116° 37.400' W
Water Tank	Unknown			47° 54.200' N	116° 36.200' W
Water Tank	In Field	NRK 0664		47° 54.137' N	116° 35.800' W
Water Tank	Unknown		AG-8249-P-16-6018	47° 49.360' N	116° 39.320' W
Water Tank	Unknown		31872	47° 51.600' N	116° 35.200' W
Water Tank	Unknown		31872	47° 51.220' N	116° 35.840' W



RIDGE CREEK ID-IPF-000447

4474 acres at 9/01/23 2100

Acres from IR
North American 1983 Datum.
Lat/Long Grid

Date Exported: 9/2/2023 7:03 PM

- | | | | | |
|---|---|--|---|--|
| <ul style="list-style-type: none"> ○ In Use - Fire Management ○ Needs Assessment ○ Repair Needed ○ Completed - Inspected ○ In Use - Fire Management ○ Repair Needed ○ Completed - Ready for Inspection ○ In Use - Fire Management ○ In Progress ○ Completed - Ready for Inspection ○ Completed - Inspected | <ul style="list-style-type: none"> P Other Property W Pump T Water Tank D Dip Site H Helispot } Division Break D Drop Point X Closure | <ul style="list-style-type: none"> C Camp S Staging Area L Lookout V Value at Risk O Other G Gate B Bridge W Water Development or Draft Site S Stream Crossing | <ul style="list-style-type: none"> ● Resource Location ● Repair Point ● Landing or Log Deck ● Culvert ● Mobile Weather Unit ● Repeater ● Water Source ● Completed Dozer Line — Completed Hand Line | <ul style="list-style-type: none"> Completed Mixed Construction Line Completed Road as Line Access or Improved Road Other Escape Route Contained Uncontained Wildfire Daily Fire Perimeter |
|---|---|--|---|--|

