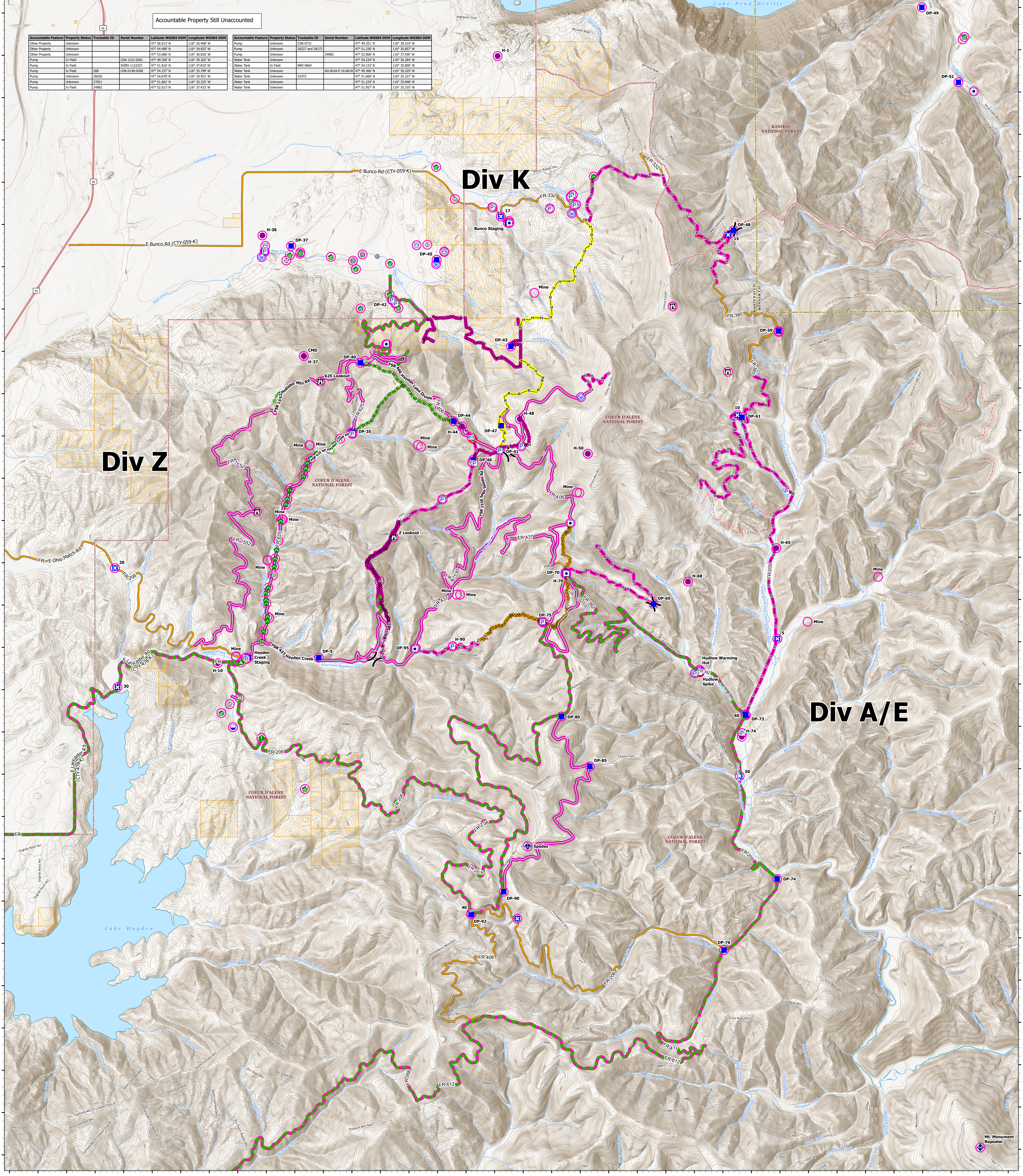


16°43.51'W 116°43'W 116°42.5'W 116°42'W 116°41.5'W 116°41'W 116°40.5'W 116°40'W 116°39.5'W 116°39'W 116°38.5'W 116°38'W 116°37.5'W 116°37'W 116°36.5'W 116°35.5'W 116°35'W 116°34.5'W 116°34'W 116°33.5'W 116°33'W 116°32.5'W 116°32'W 116°31.5'W 116°31'W 116°30.5'W 116°30'W 116°29.5'W 116°29'W 116°28.5'W 116°28'W 116°27.5'W 116°27'W 116°26.5'W 116°26'W

Accountable Property Still Unaccounted

Accountable Feature	Property Status	Trackable ID	Serial Number	Latitude WGS84 DDM	Longitude WGS84 DDM	Accountable Feature	Property Status	Trackable ID	Serial Number	Latitude WGS84 DDM	Longitude WGS84 DDM
Other Property	Unknown			47° 56.013' N	116° 36.468' W	Pump	Unknown	CDK-0731		47° 49.351' N	116° 39.310' W
Other Property	Unknown			47° 54.689' N	116° 34.632' W	Pump	Unknown	26227 and 28172		47° 51.226' N	116° 35.857' W
Other Property	Unknown			47° 53.066' N	116° 36.836' W	Pump	Unknown	24983		47° 52.206' N	116° 37.429' W
Pump	In Field	CDK-1222-4281		47° 49.350' N	116° 39.302' W	Water Tank	Unknown			47° 54.234' N	116° 36.284' W
Pump	In Field	W289-1122337		47° 51.816' N	116° 37.810' W	Water Tank	In Field	MRK 0664		47° 54.153' N	116° 35.800' W
Pump	In Field	CDK-6148-0268	266	47° 54.137' N	116° 35.799' W	Water Tank	Unknown	AG-8208P-16-6018		47° 49.366' N	116° 39.329' W
Pump	Unknown	26626		47° 54.078' N	116° 34.951' W	Water Tank	Unknown	23972		47° 51.460' N	116° 35.327' W
Pump	Unknown	27831		47° 51.661' N	116° 35.325' W	Water Tank	Unknown			47° 51.229' N	116° 35.848' W
Pump	In Field	24982		47° 52.013' N	116° 37.437' W	Water Tank	Unknown			47° 51.957' N	116° 35.335' W



RIDGE CREEK
ID-IPF-000447

4474 acres at 9/01/23 2100

Acres from IR
 North American 1983 Datum.
 Lat/Long Grid

Date Exported: 9/2/2023 6:12 PM

- | | | | | |
|---|---|--|--|---|
| <ul style="list-style-type: none"> ○ In Use - Fire Management ● Needs Assessment ● Repair Needed ■ Completed - Inspected ○ In Use - Fire Management ● Repair Needed ■ Completed - Ready for Inspection ■ In Use - Fire Management ■ In Progress ■ Completed - Ready for Inspection ■ Completed - Inspected | <ul style="list-style-type: none"> □ Other Property □ Pump □ Water Tank ○ Dip Site ● Helispot) Division Break ■ Drop Point | <ul style="list-style-type: none"> ■ Closure X Camp X Staging Area □ Lookout ● Value at Risk ○ Other ○ Gate ○ Bridge | <ul style="list-style-type: none"> ■ Water Development or Draft Site ■ Stream Crossing ■ Resource Location ● Repair Point ■ Landing or Log Deck ■ Culvert ■ Mobile Weather Unit ■ Repeater | <ul style="list-style-type: none"> ○ Water Source — Completed Dozer Line — Completed Hand Line — Completed Mixed Construction Line — Completed Road as Line — Access or Improved Road — Other — Escape Route |
|---|---|--|--|---|

