

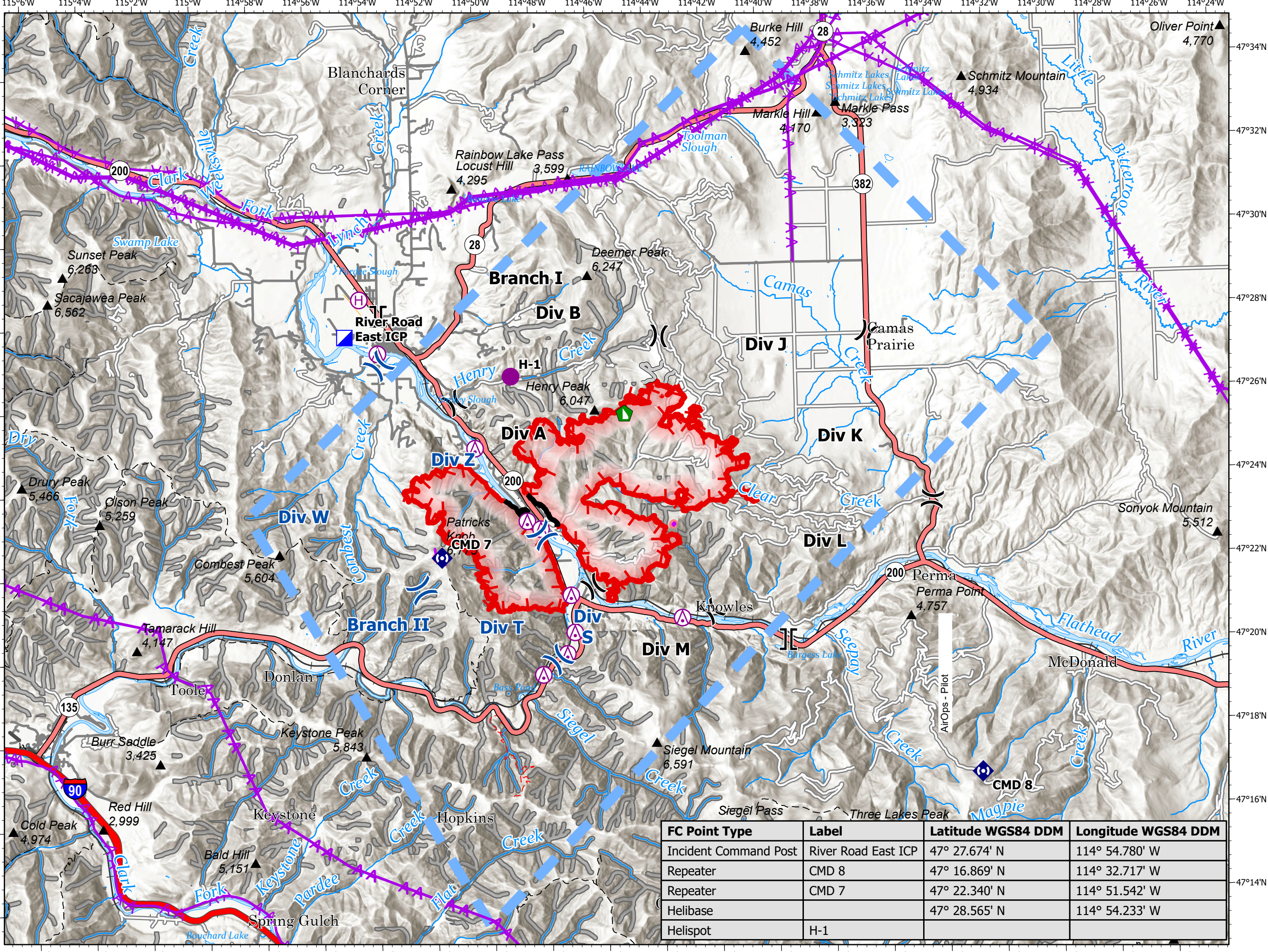
AirOps - Pilot

River Road East
MT-LNF-200730
16,772 acres

08/24/2023

Fire perimeter updated from
Acres from IR on 8/20/2023 @ 1738

- Aerial Hazard
- Aerial Hazard
- Helispot
- Helibase
- Division Break
- Branch Break
- Incident Command Post
- Dozer Push
- Repeater
- Access or Improved Road
- Retardant Drop
- Temporary Flight Restriction
- Contained
- Uncontained
- Wildfire Daily Fire Perimeter
- Primary Highway
- Secondary Highway
- Primary Paved
- Secondary Paved
- Secondary Dirt
- Trail
- National Designated Trail
- Railroad
- Runway
- Stream/River; Artificial Path
- Canal / Ditch
- Retardant Avoidance



FC Point Type	Label	Latitude WGS84 DDM	Longitude WGS84 DDM
Incident Command Post	River Road East ICP	47° 27.674' N	114° 54.780' W
Repeater	CMD 8	47° 16.869' N	114° 32.717' W
Repeater	CMD 7	47° 22.340' N	114° 51.542' W
Helibase		47° 28.565' N	114° 54.233' W
Helispot	H-1		



8/23/2023 2053
North American 1983
Datum: Lat,Long Grid

Scale: 1:155,000