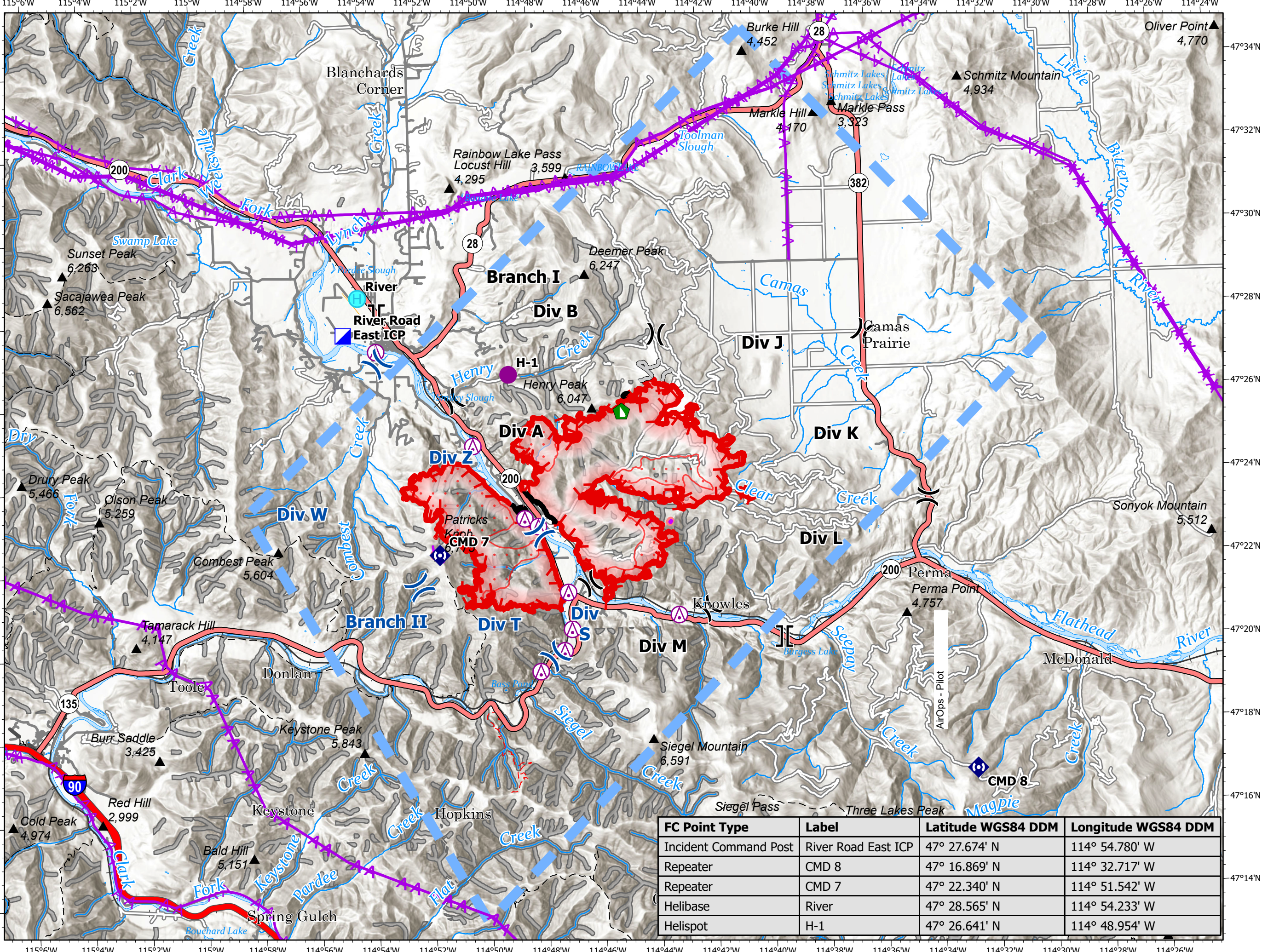


# AirOps - Pilot

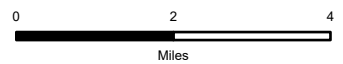
River Road East  
 MT-LNF-200730  
 17,083 acres  
 8/24/2023

Fire perimeter updated from  
 Acres from IR on 8/23/2023 @ 2212

- Aerial Hazard
- Aerial Hazard
- Helispot
- Helibase
- Division Break
- Branch Break
- Incident Command Post
- Dozer Push
- Repeater
- Access or Improved Road
- Retardant Drop
- Temporary Flight Restriction
- Contained
- Uncontained
- Wildfire Daily Fire Perimeter
- IR Scattered Heat
- Primary Highway
- Secondary Highway
- Primary Paved
- Secondary Paved
- Secondary Dirt
- Trail
- National Designated Trail
- Railroad
- Runway
- Stream/River; Artificial Path
- Canal / Ditch
- Retardant Avoidance



FC Point Type	Label	Latitude WGS84 DDM	Longitude WGS84 DDM
Incident Command Post	River Road East ICP	47° 27.674' N	114° 54.780' W
Repeater	CMD 8	47° 16.869' N	114° 32.717' W
Repeater	CMD 7	47° 22.340' N	114° 51.542' W
Helibase	River	47° 28.565' N	114° 54.233' W
Helispot	H-1	47° 26.641' N	114° 48.954' W



8/24/2023 0545  
 North American 1983  
 Datum: Lat,Long Grid

Scale: 1:155,000

