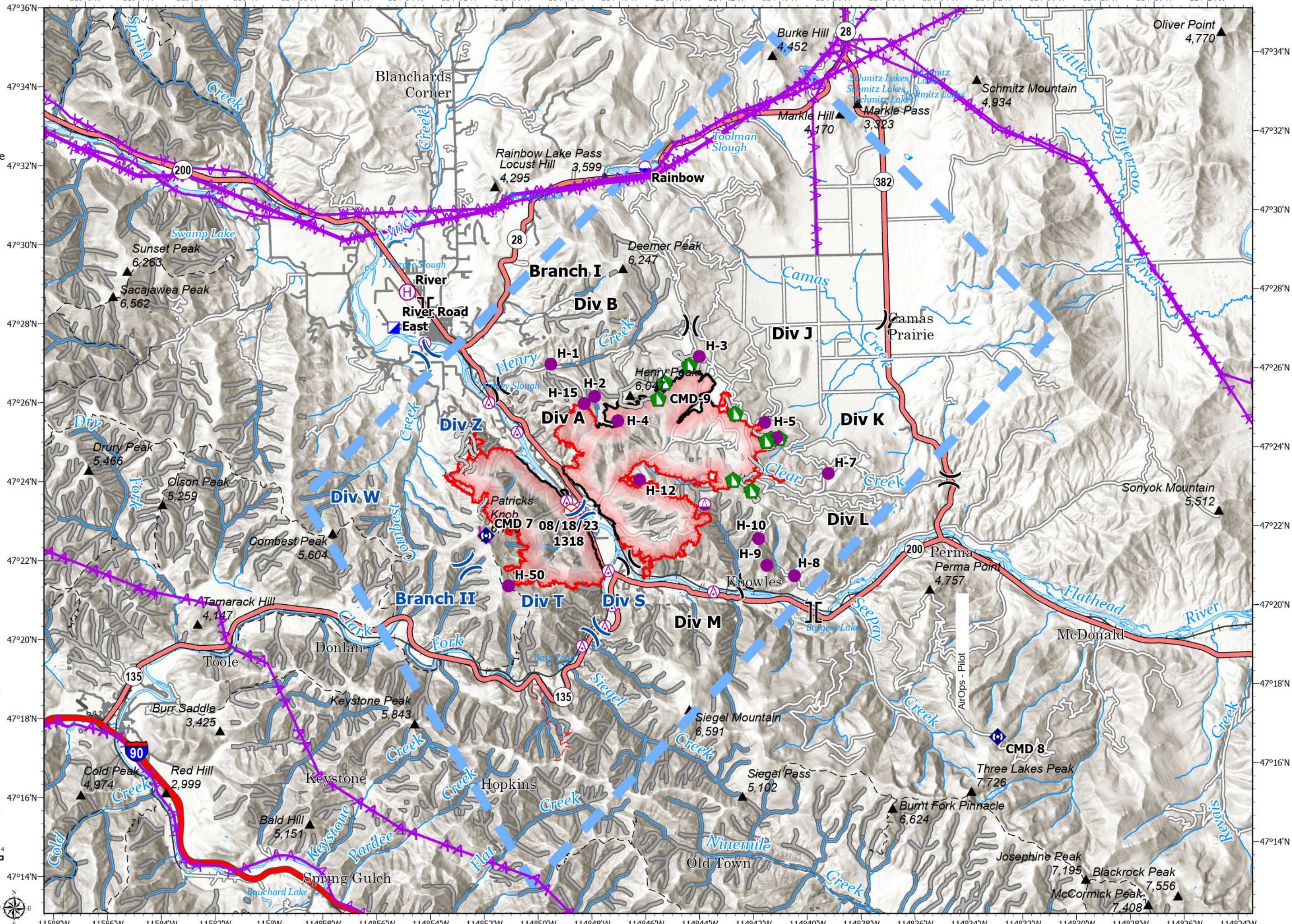


# AirOps - Pilot

River Road East  
MT-LNF-200730  
17,227 acres  
8/30/2023

Fire perimeter updated from  
Acres from IR on 8/29/2023 @ 0314

- ▲ Summit; Gap
- GNIS Populated Places Some
- Primary Highway
- Secondary Highway
- Primary Paved
- Secondary Paved
- Secondary Dirt
- Trail
- National Designated Trail
- Railroad
- Runway
- Retardant Avoidance
- Aerial Hazard
- Aerial Hazard
- Dip Site
- Helispot
- Helibase
- Sling Site
- Division Break
- Branch Break
- Incident Command Post
- Fire Origin
- Dozer Push
- Repeater
- Access or Improved Road
- Retardant Drop
- Temporary Flight Restriction
- Contained
- Uncontained
- IR Heat Perimeter
- IR Intense Heat
- IR Scattered Heat
- Wildfire Daily Fire Perimeter



0 2 4  
Miles

8/30/2023 0528  
North American 1983  
Datum: Lat/Long Grid

Scale: 1:160,000

| <b>FC Point Type</b>  | <b>Label</b>    | <b>Comments</b>                              | <b>Elevation (Feet)</b> | <b>Latitude WGS84 DDM</b> | <b>Longitude WGS84 DDM</b> |
|-----------------------|-----------------|--|-------------------------|---------------------------|----------------------------|
| Helispot              | H-7             | approved type 3                              | 4300                    | 47° 23.670' N             | 114° 38.723' W             |
| Incident Command Post | River Road East |  |                         | 47° 27.674' N             | 114° 54.780' W             |
| Repeater              | CMD 8           |  |                         | 47° 16.869' N             | 114° 32.717' W             |
| Repeater              | CMD 7           |  |                         | 47° 22.340' N             | 114° 51.542' W             |
| Helispot              | H-10            | approved type 3                              | 4800                    | 47° 22.072' N             | 114° 41.391' W             |
| Helibase              | River           |  | 2460                    | 47° 28.565' N             | 114° 54.233' W             |
| Helispot              | H-1             |  | 3100                    | 47° 26.641' N             | 114° 48.954' W             |
| Helispot              | H-12            | approved for type 3, dust abatement desired  | 4000                    | 47° 23.647' N             | 114° 45.766' W             |
| Helispot              | H-3             | approved type 3                              | 5000                    | 47° 26.726' N             | 114° 43.407' W             |
| Dip Site              | Rainbow         |  |                         | 47° 31.564' N             | 114° 45.223' W             |
| Repeater              | CMD-9           |  |                         | 47° 26.027' N             | 114° 44.761' W             |
| Sling Site            |                 |  |                         | 47° 22.985' N             | 114° 43.370' W             |
| Helispot              | H-2             | approved for type 3                          | 4950                    | 47° 25.792' N             | 114° 47.354' W             |
| Helispot              | H-6             | approved for type 3                          | 4600                    | 47° 24.610' N             | 114° 40.612' W             |
| Helispot              | H-5             | approved for type 3                          | 3900                    | 47° 25.008' N             | 114° 41.032' W             |
| Helispot              | H-9             | approved for type 3                          | 4300                    | 47° 21.388' N             | 114° 41.116' W             |
| Helispot              | H-50            | approved for type 3                          | 6400                    | 47° 21.057' N             | 114° 50.764' W             |
| Helispot              | H-8             | Approved for type 3 helicopter               |                         | 47° 21.104' N             | 114° 40.101' W             |
| Helispot              | H-4             | Helispot needs dust abatement before landing |                         | 47° 25.158' N             | 114° 46.513' W             |
| Helispot              | H-15            | Approved for type 3 helicopter               |                         | 47° 25.621' N             | 114° 47.751' W             |

