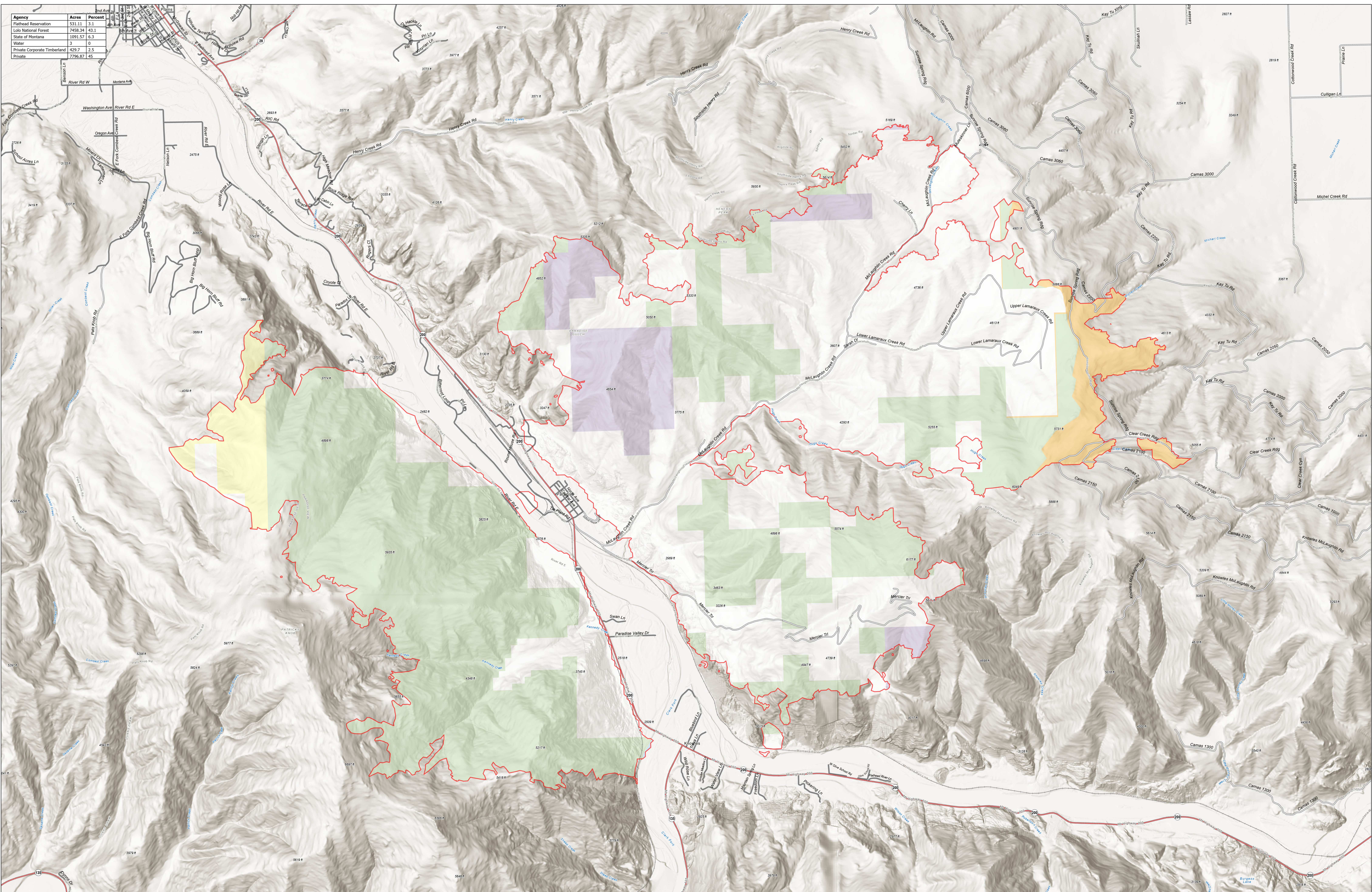


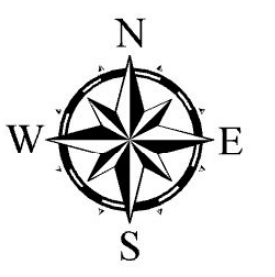
Agency	Acres	Percent
Flathead Reservation	531.11	3.1
Lolo National Forest	7458.34	43.1
State of Montana	1091.57	6.3
Water	3	0
Private Corporate Timberland	429.7	2.5
Private	7796.87	45



Ownership

River Road East
 MT-LNF-200730
 17310 acres
 9/3/2023

Fire perimeter updated from
 N350FV TK-9 9/2/2023 2047 on 9/2/2023 @
 2047



- Wildfire Daily Fire Perimeter
- Private Corporate Timberland
- Flathead Reservation
- Lolo National Forest
- State of Montana
- Water
- Private



Northern Rockies Team 1
 9/3/2023 0622
 North American 1983 Datum.
 LatLong Grid

Ownership