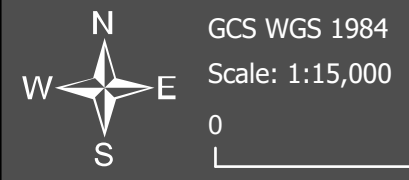
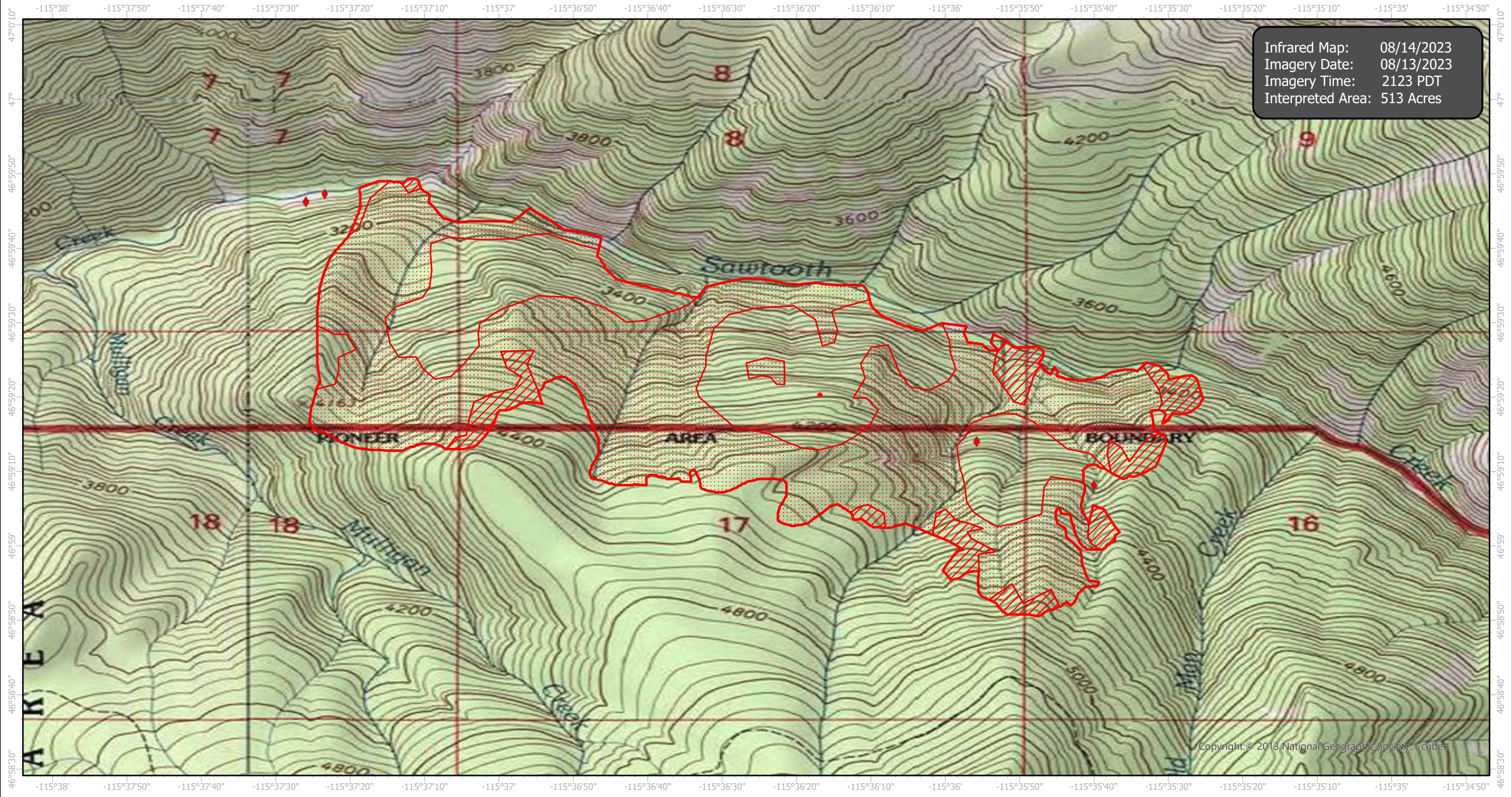


Sawtooth Infrared Map

Incident # (ID-IPF-000342)



Infrared Map: 08/14/2023
Imagery Date: 08/13/2023
Imagery Time: 2123 PDT
Interpreted Area: 513 Acres



- IR Isolated Heat Source
- Possible IR Heat Source
- ▭ IR Heat Perimeter
- ▨ IR Intense Heat
- ▩ IR Scattered Heat

Copyright: © 2013 National Geographic Society, i-cubed

Infrared Interrupter: Daniel LeVrier
email: daniel.levrier@usda.gov