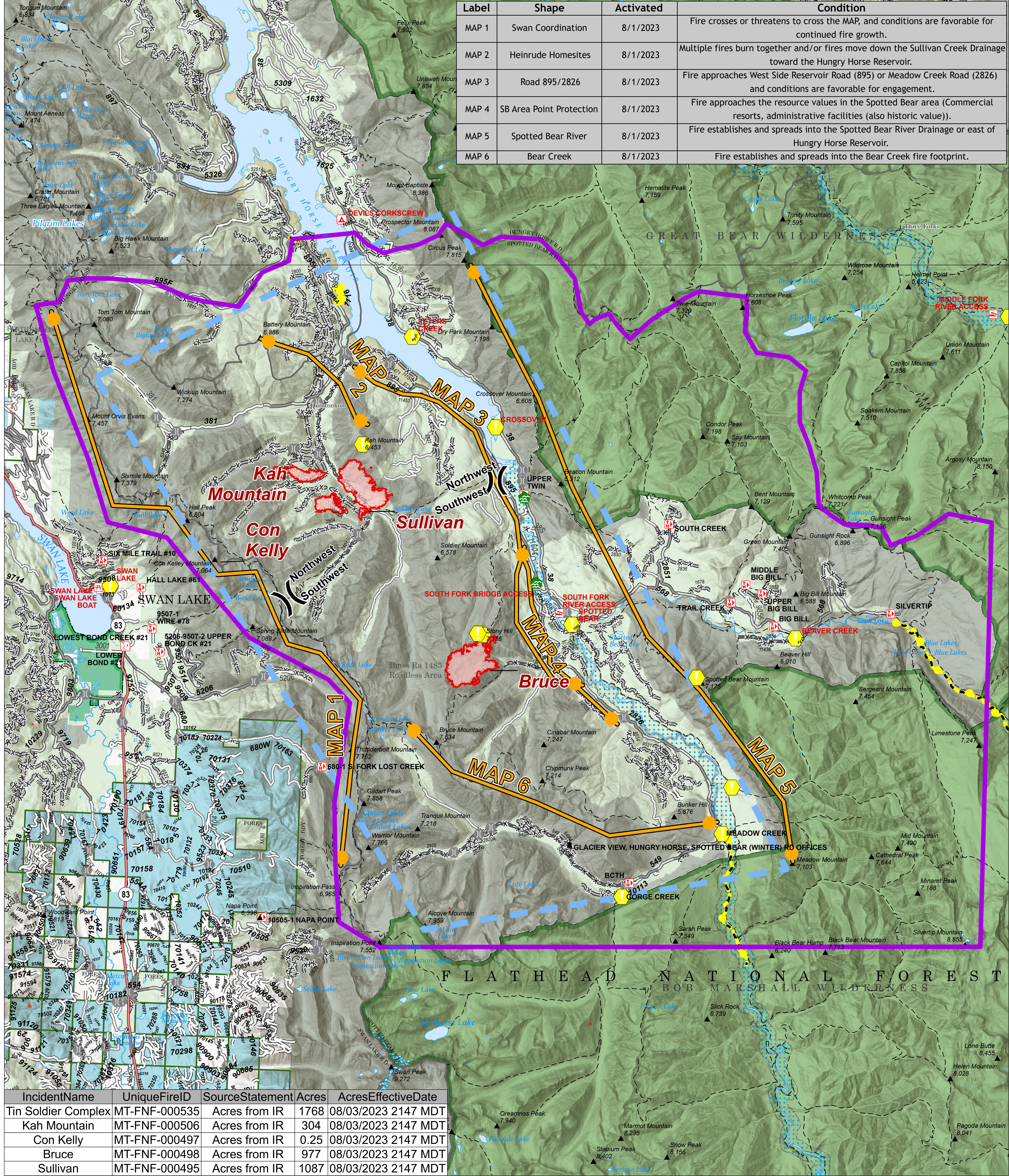


Label	Shape	Activated	Condition
MAP 1	Swan Coordination	8/1/2023	Fire crosses or threatens to cross the MAP, and conditions are favorable for continued fire growth.
MAP 2	Heinrude Homesites	8/1/2023	Multiple fires burn together and/or fires move down the Sullivan Creek Drainage toward the Hungry Horse Reservoir.
MAP 3	Road 895/2826	8/1/2023	Fire approaches West Side Reservoir Road (895) or Meadow Creek Road (2826) and conditions are favorable for engagement.
MAP 4	SB Area Point Protection	8/1/2023	Fire approaches the resource values in the Spotted Bear area (Commercial resorts, administrative facilities (also historic value)).
MAP 5	Spotted Bear River	8/1/2023	Fire establishes and spreads into the Spotted Bear River Drainage or east of Hungry Horse Reservoir.
MAP 6	Bear Creek	8/1/2023	Fire establishes and spreads into the Bear Creek fire footprint.

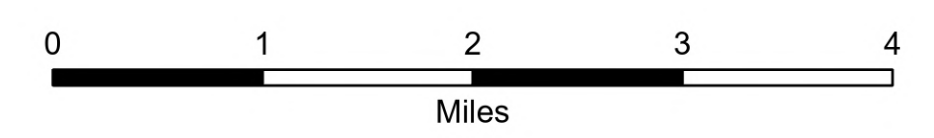
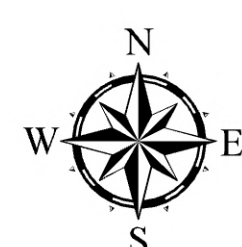


IncidentName	UniqueFireID	SourceStatement	Acres	AcresEffectiveDate
Tin Soldier Complex	MT-FNF-000535	Acres from IR	1768	08/03/2023 2147 MDT
Kah Mountain	MT-FNF-000506	Acres from IR	304	08/03/2023 2147 MDT
Con Kelly	MT-FNF-000497	Acres from IR	0.25	08/03/2023 2147 MDT
Bruce	MT-FNF-000498	Acres from IR	977	08/03/2023 2147 MDT
Sullivan	MT-FNF-000495	Acres from IR	1087	08/03/2023 2147 MDT

Planning

Tin Soldier Complex
MT-FNF-000535
1768 acres
8/4/2023

Fire perimeter updated from
Acres from IR on 08/03/2023 2147 MDT



Scale: 1:58,000

- Planning Area
- Wildfire Daily Fire Perimeter
- Uncontained
-) Division Break
- ⚠ Value at Risk
- ⚠ Water Development or Draft Site
- Highlighted Feature- Value at Risk
- Management Action Point
- Temporary Flight Restriction
- Structure
- Secondary Highway
- Secondary Paved
- Secondary Dirt
- Paved
- Gravel Road
- Dirt Road
- Unimproved Road
- Forest Service Roads Closed
- USFS Roadless Areas
- FS Wilderness Boundary
- Forest Service Land
- Bureau of Land Management Lands
- Other Federal Government Lands
- State Lands
- U.S. Fish Wildlife Service Lands

