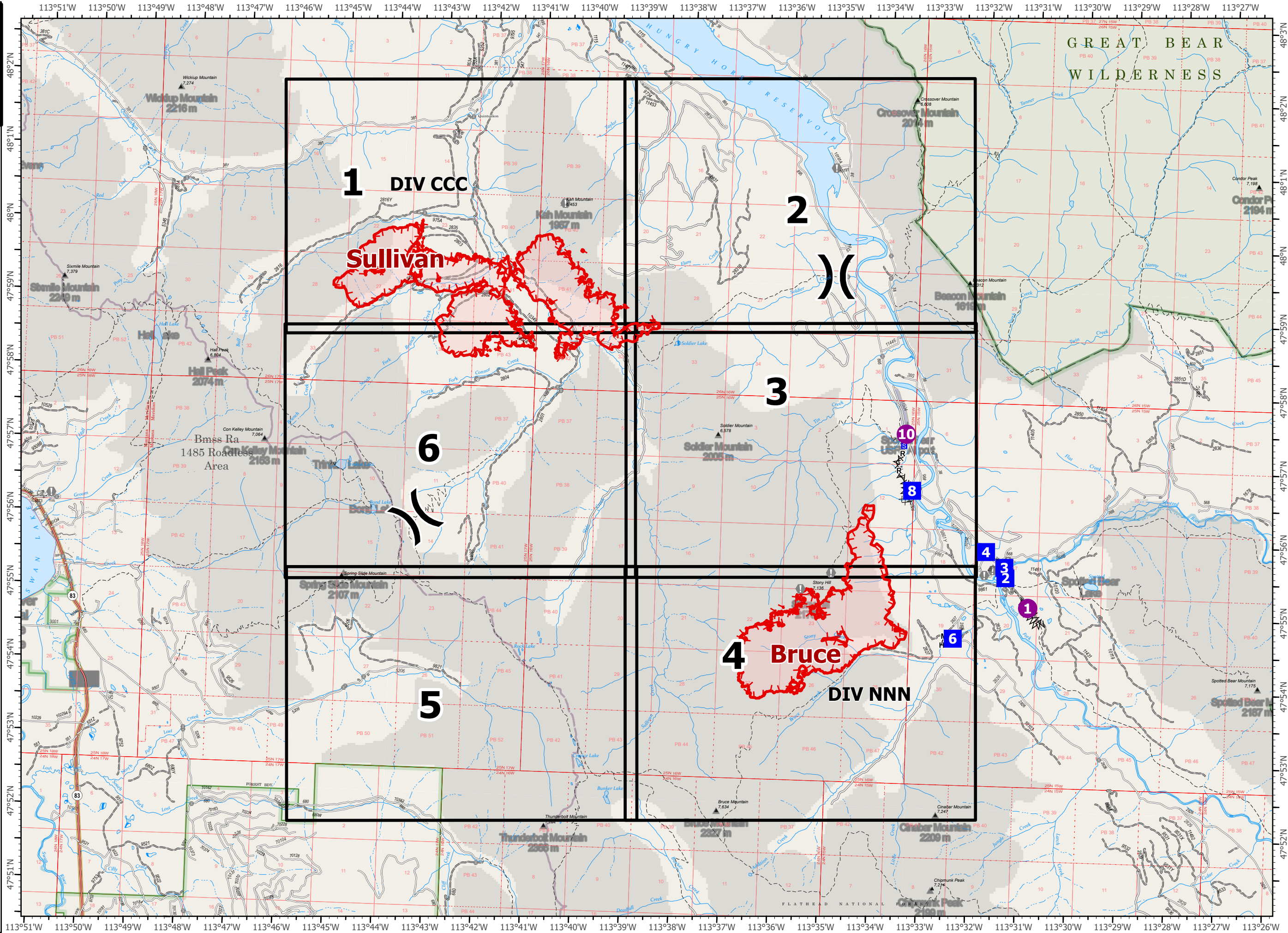


**IAP**  
**Tin Soldier Complex**  
 MT-FNF-000535  
 08/18/2023  
 0600

- Helispot
- ( Division Break
- Drop Point
- S Staging Area
- Value at Risk
- Completed Dozer Line
- Completed Fuel Break
- Completed Hand Line
- Completed Mixed Construction Line
- Completed Road as Line
- Uncontained
- Wildfire Daily Fire Perimeter
- Map Grid Index
- Administrative FS Boundary
- USFS Wilderness
- USFS Roadless Areas
- Structure
- Forest Service Roads Open
- Forest Service Roads Closed
- Secondary Highway
- Secondary Dirt
- Secondary Paved
- Secondary Dirt
- Trail



0 0.85 1.7  
 Miles Scale: 1:88,000

8/18/2023 0041  
 North American 1983  
 Datum: LatLong Grid



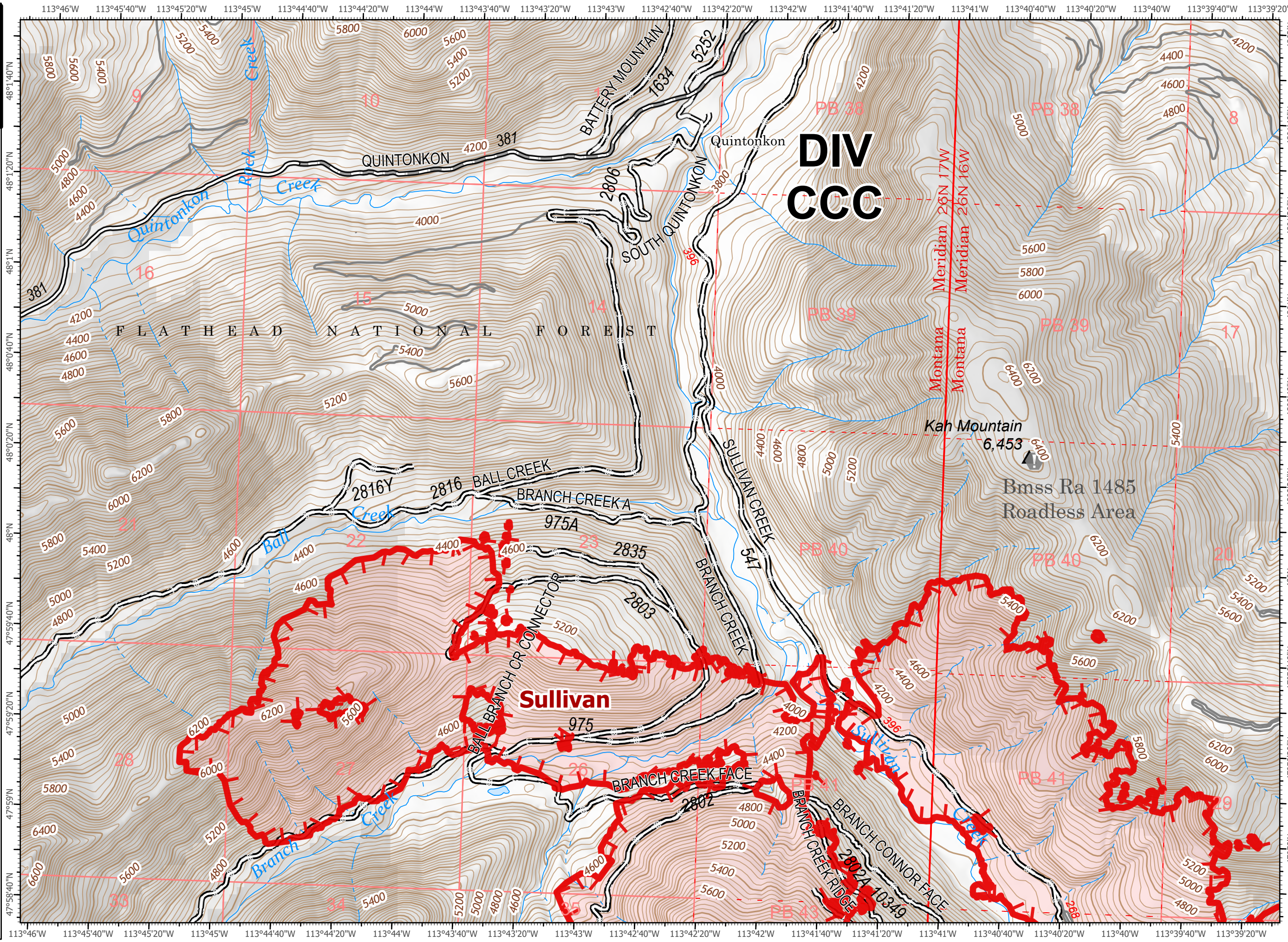
# IAP - PAGE 1

Tin Soldier

MT-FNF-000518

08/18/2023  
0600

- Value at Risk
- Uncontained
- Wildfire Daily Fire Perimeter
- Structure
- Dirt Road
- Gravel Road
- Road, Not Maintained



# DIV CCC

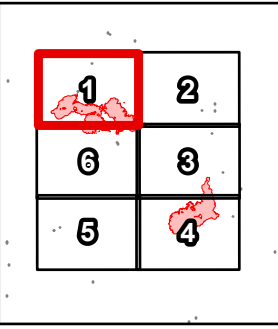
FLATHEAD NATIONAL FOREST

Kah Mountain  
6,453

Bmss Ra 1485  
Roadless Area

Sullivan




DIV CCC



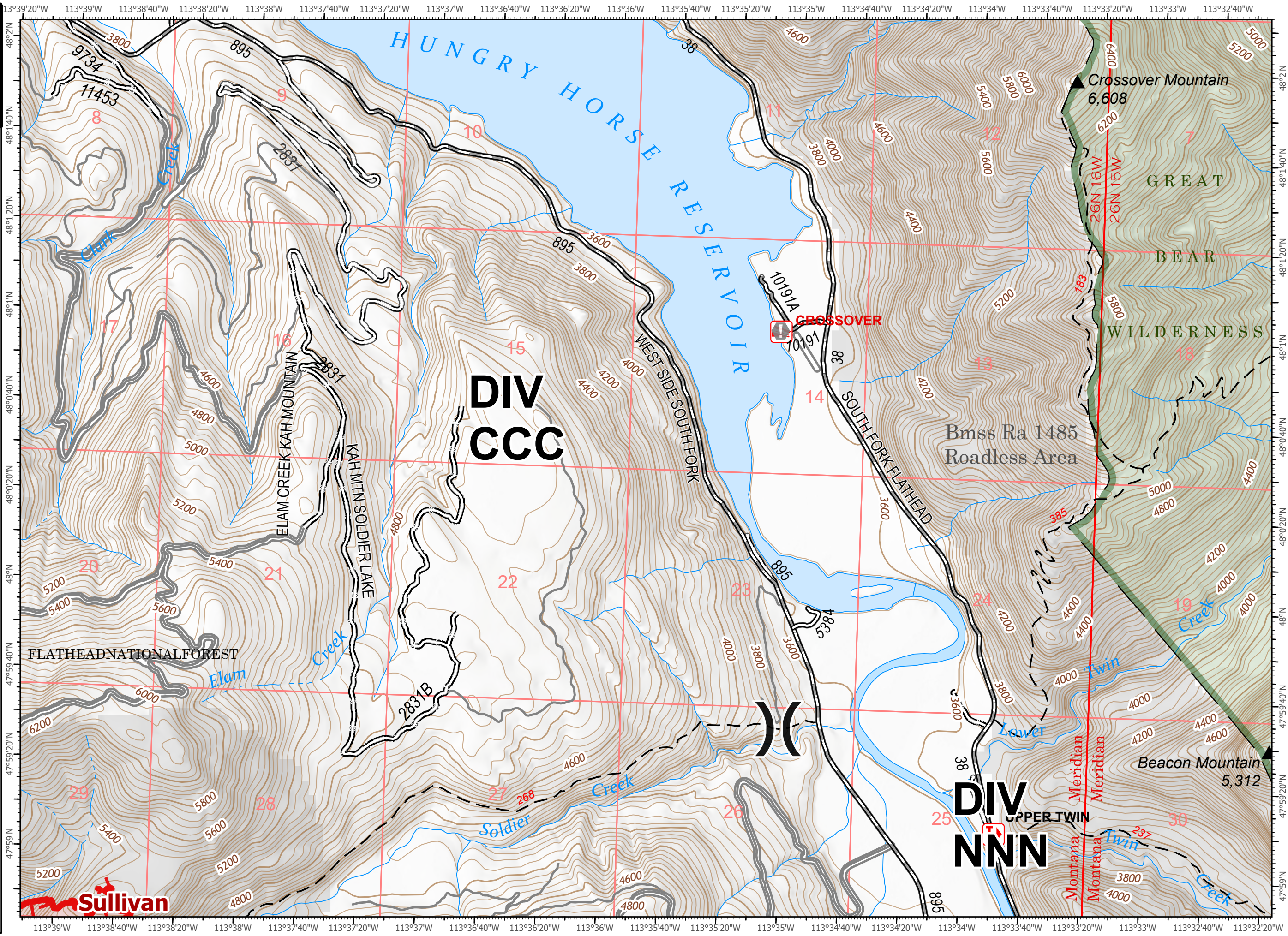
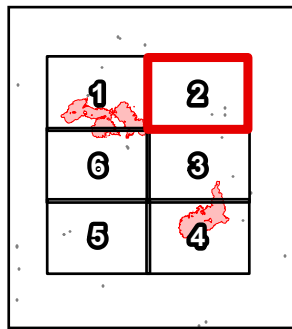
0 0.25 0.5  
Miles Scale: 1:24,000

8/18/2023 0036



- ( ) Division Break
- ⬇ Value at Risk
- ▭ Uncontained
-  Wildfire Daily Fire Perimeter
-  Dirt Road
-  Gravel Road
-  Road, Not Maintained

DIV CCC & NNN



Scale: 1:24,000

8/18/2023 0036



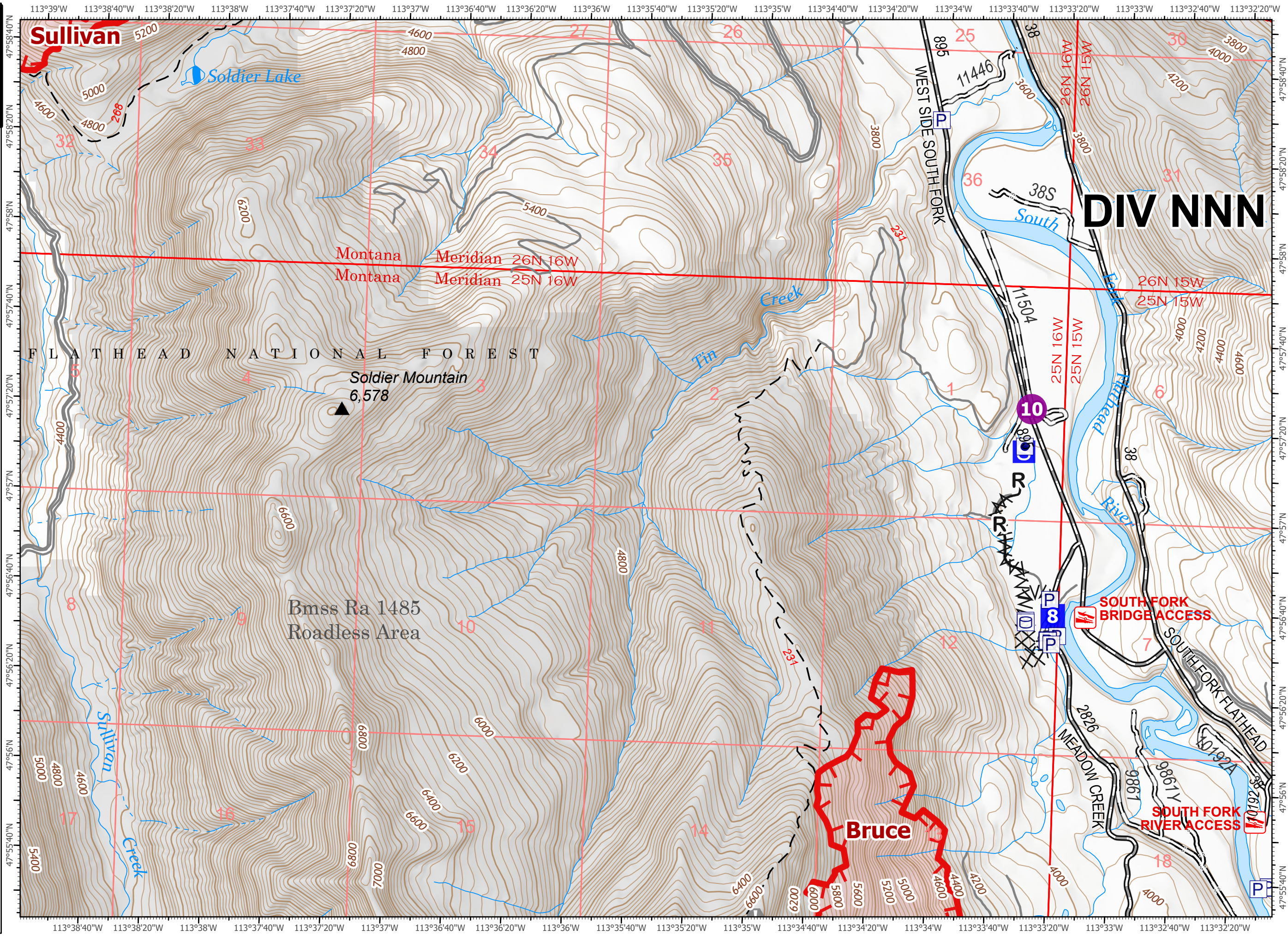
# IAP - PAGE 3

Tin Soldier

MT-FNF-000518

08/18/2023  
0600

- Helispot
- Drop Point
- Ⓢ Staging Area
- ⚠ Value at Risk
- Ⓜ Other Property
- Ⓟ Pump
- Ⓢ Water Tank
- Uncontained
- ⓧ Completed Dozer Line
- ^ ^ Completed Fuel Break
- R Completed Road as Line
- ▭ Wildfire Daily Fire Perimeter
- ▭ Structure
- ▭ Dirt Road
- ▭ Gravel Road
- ▭ Road, Not Maintained



# DIV NNN

FLATHEAD NATIONAL FOREST

Soldier Mountain  
6,578

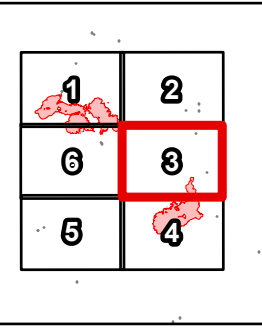
Bmss Ra 1485  
Roadless Area

## Bruce

SOUTH FORK  
BRIDGE ACCESS

SOUTH FORK  
RIVER ACCESS

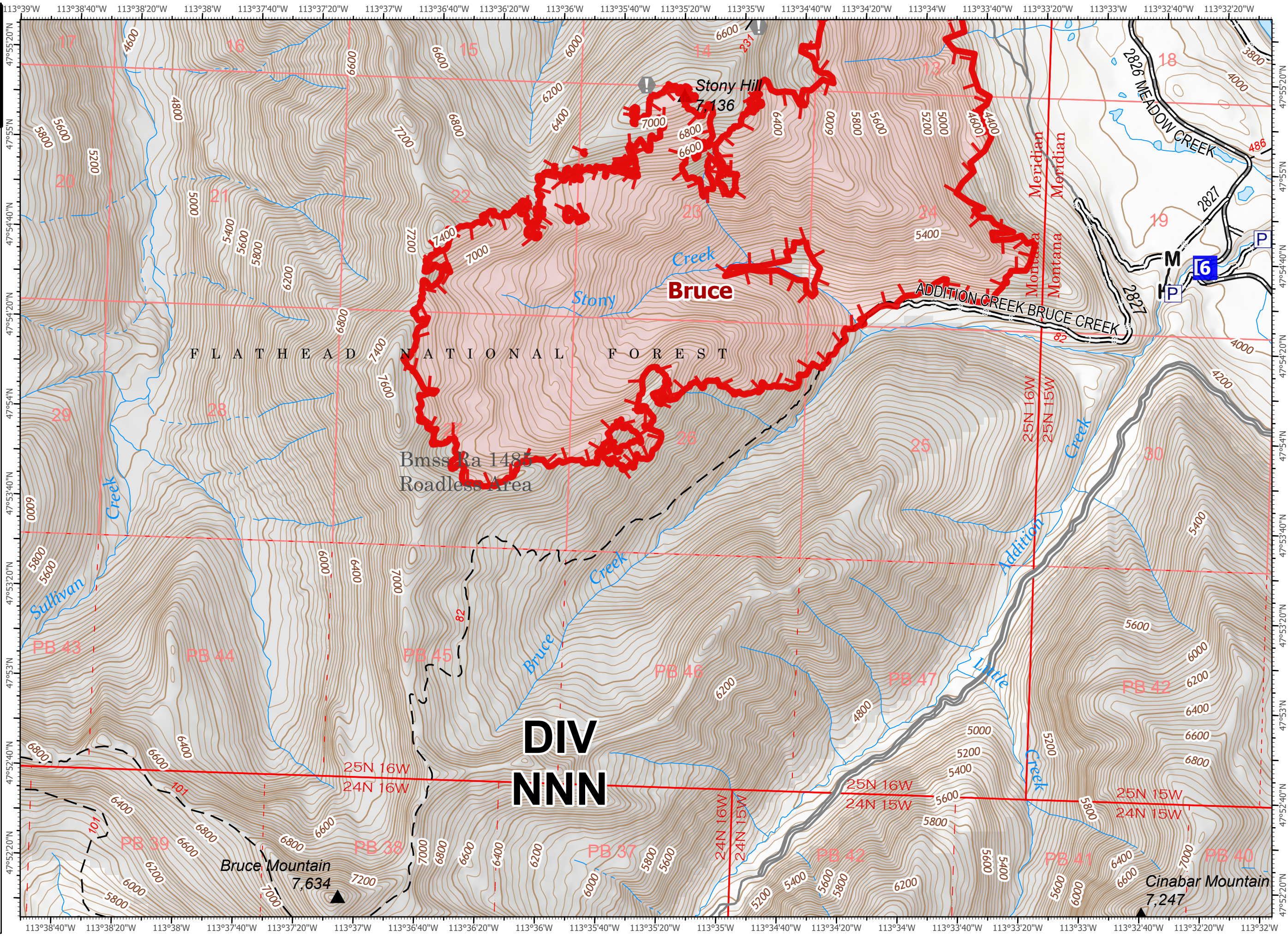
### DIV NNN



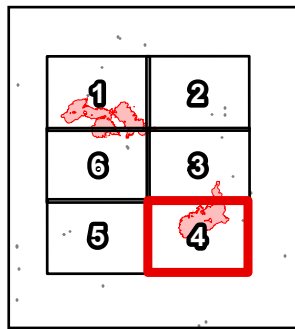
0 0.25 0.5  
Miles Scale: 1:24,000



-  Drop Point
-  Value at Risk
-  Pump
-  Uncontained
-  Completed Hand Line
-  Completed Mixed Construction Line
-  Wildfire Daily Fire Perimeter
-  Structure
-  Dirt Road
-  Gravel Road
-  Road, Not Maintained



DIV NNN



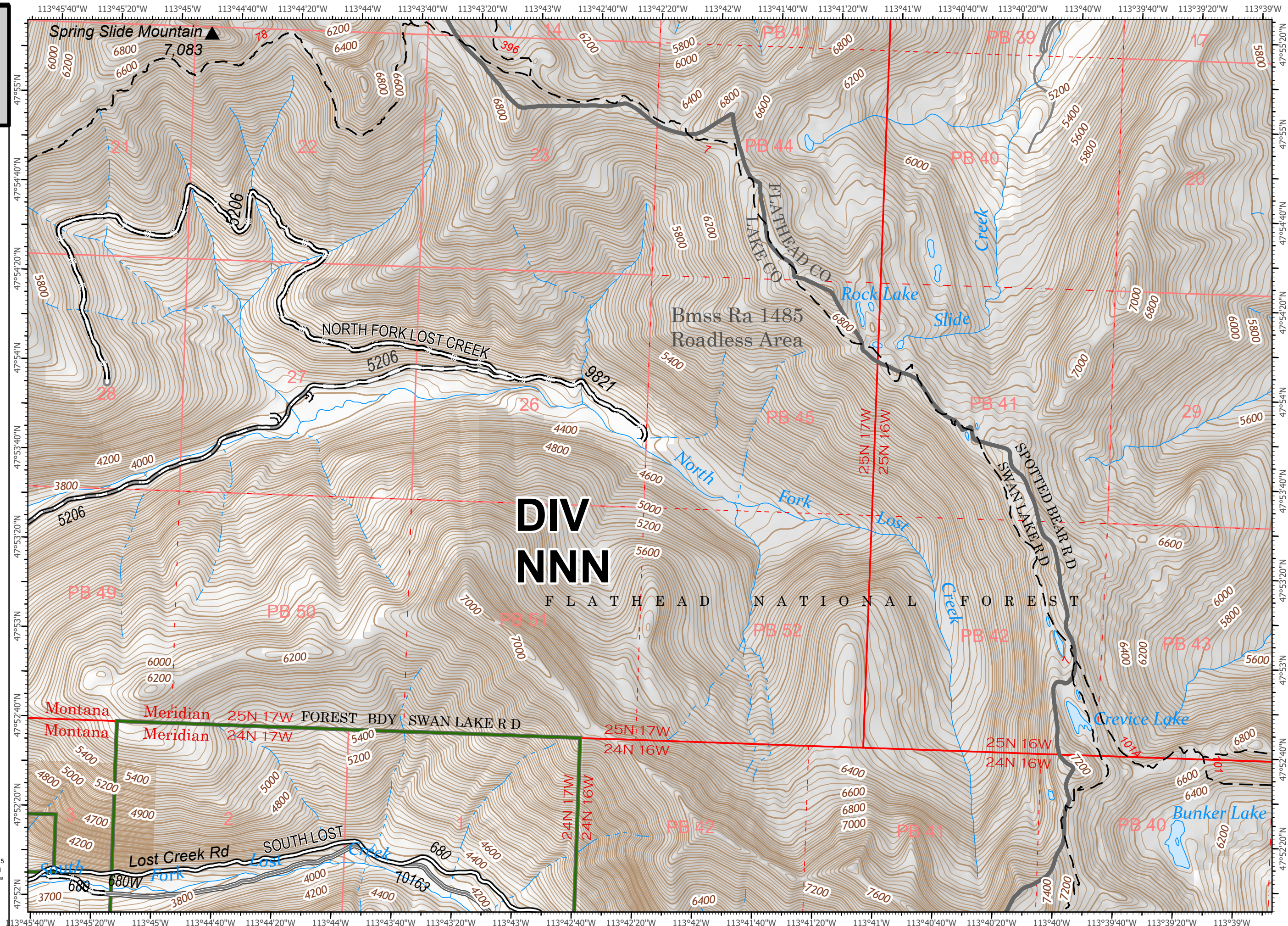
DIV  
NNN

0 0.25 0.5  
Miles  
Scale: 1:24,000

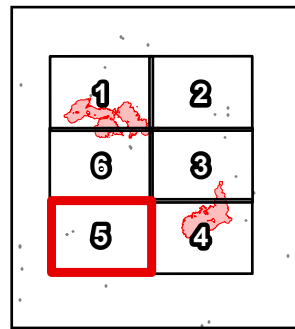
8/18/2023 0036



- Dirt Road
- Gravel Road
- Road, Not Maintained





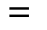
DIV NNN

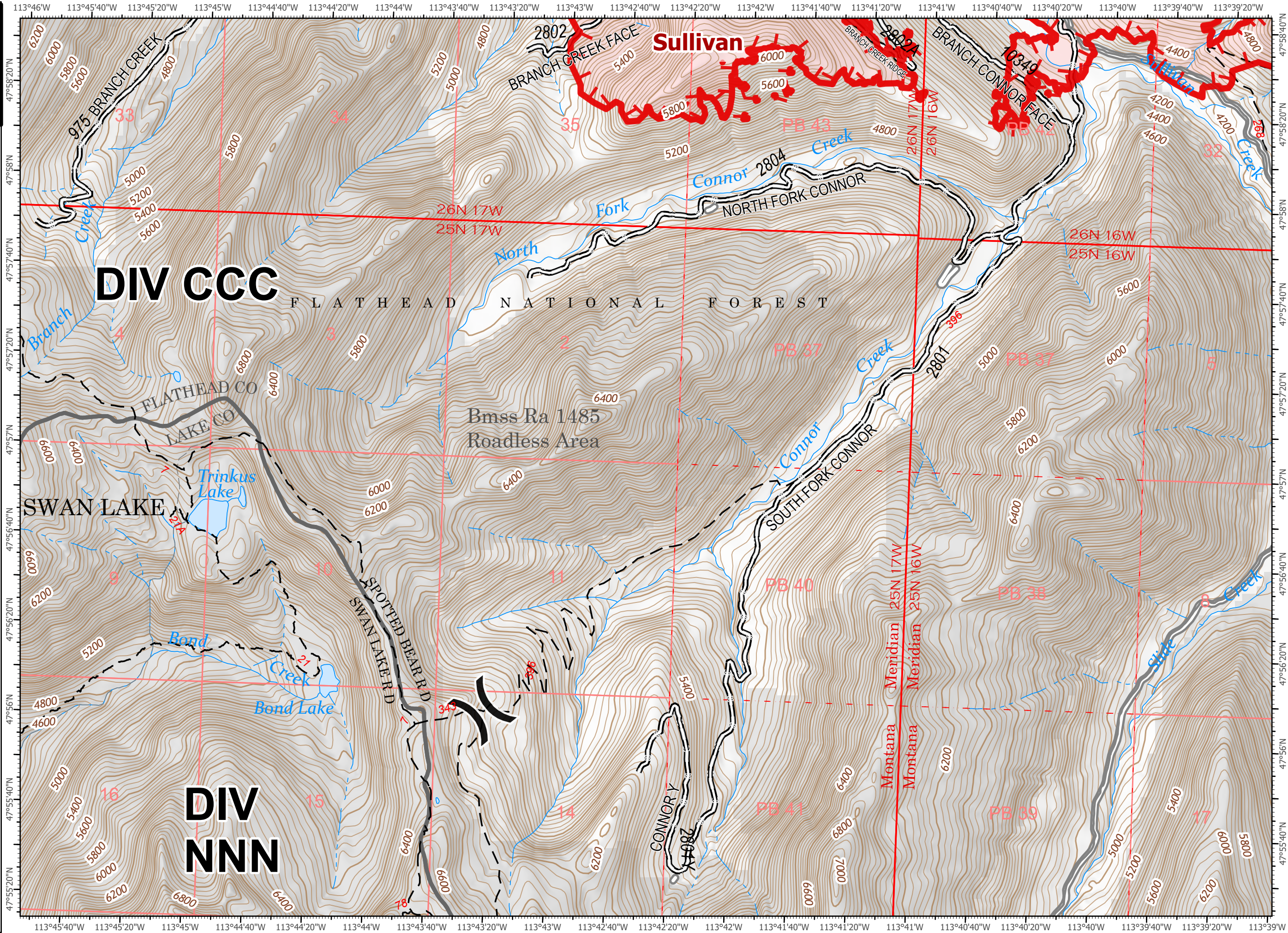


Scale: 1:24,000  
0 0.25 0.5 Miles

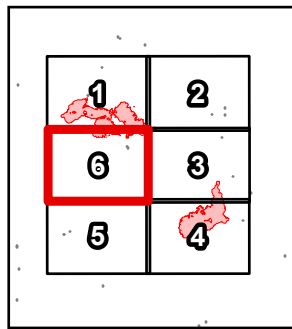
8/18/2023 0037



- ( ) Division Break
-  Uncontained
-  Wildfire Daily Fire Perimeter
-  Road, Not Maintained



DIV CCC & NNN



0 0.25 0.5  
Miles Scale: 1:24,000

8/18/2023 0037