

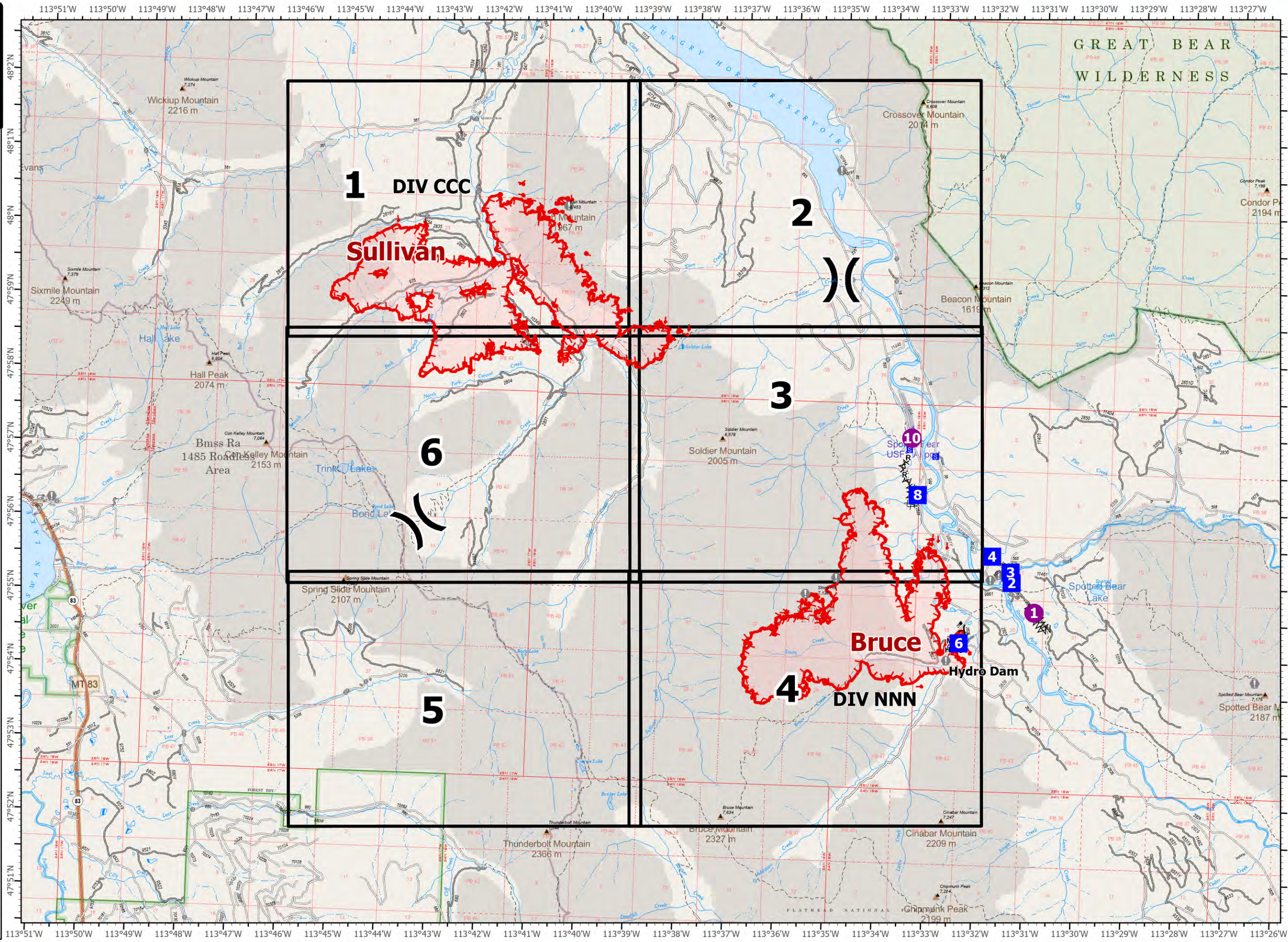
# IAP

## Tin Soldier

MT-FNF-000535

08/20/2023  
0600

- Helispot
- ( ) Division Break
- Drop Point
- Staging Area
- Value at Risk
- ▭ Completed Burnout
- ▭ Completed Dozer Line
- ▭ Completed Fuel Break
- ▭ Completed Hand Line
- ▭ Completed Mixed Construction Line
- ▭ Completed Road as Line
- ▭ Uncontained
- ▭ Wildfire Daily Fire Perimeter
- ▭ Map Grid Index
- ▭ Administrative FS Boundary
- ▭ USFS Wilderness
- ▭ USFS Roadless Areas
- ▭ Structure
- ▭ Forest Service Roads Open
- ▭ Forest Service Roads Closed
- ▭ Secondary Highway
- ▭ Secondary Dirt
- ▭ Secondary Highway
- ▭ Secondary Paved
- ▭ Secondary Dirt
- ▭ Trail



0 0.85 1.7  
Miles Scale: 1:80,000

8/19/2023 2305  
North American 1983  
Datum: LatLong Gnd

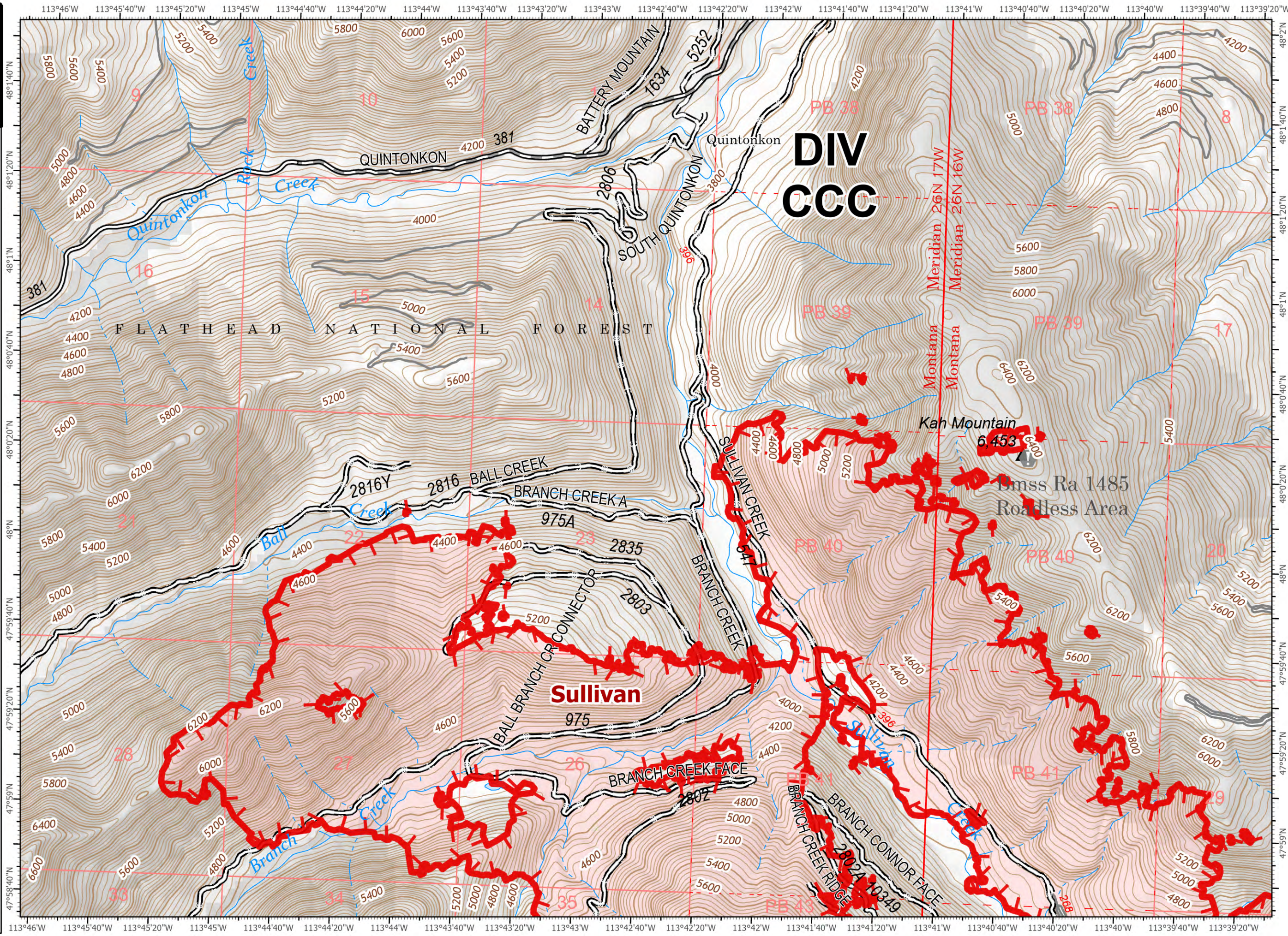
IAP - PAGE 1

Tin Soldier

MT-FNF-000535

08/20/2023  
0600

-  Value at Risk
-  Uncontained
-  Wildfire Daily Fire Perimeter
-  Structure
-  Dirt Road
-  Gravel Road
-  Road, Not Maintained



DIV CCC

1	2
6	3
5	4

0 0.25 0.5  
Miles Scale: 1:24,000

8/19/2023 2305

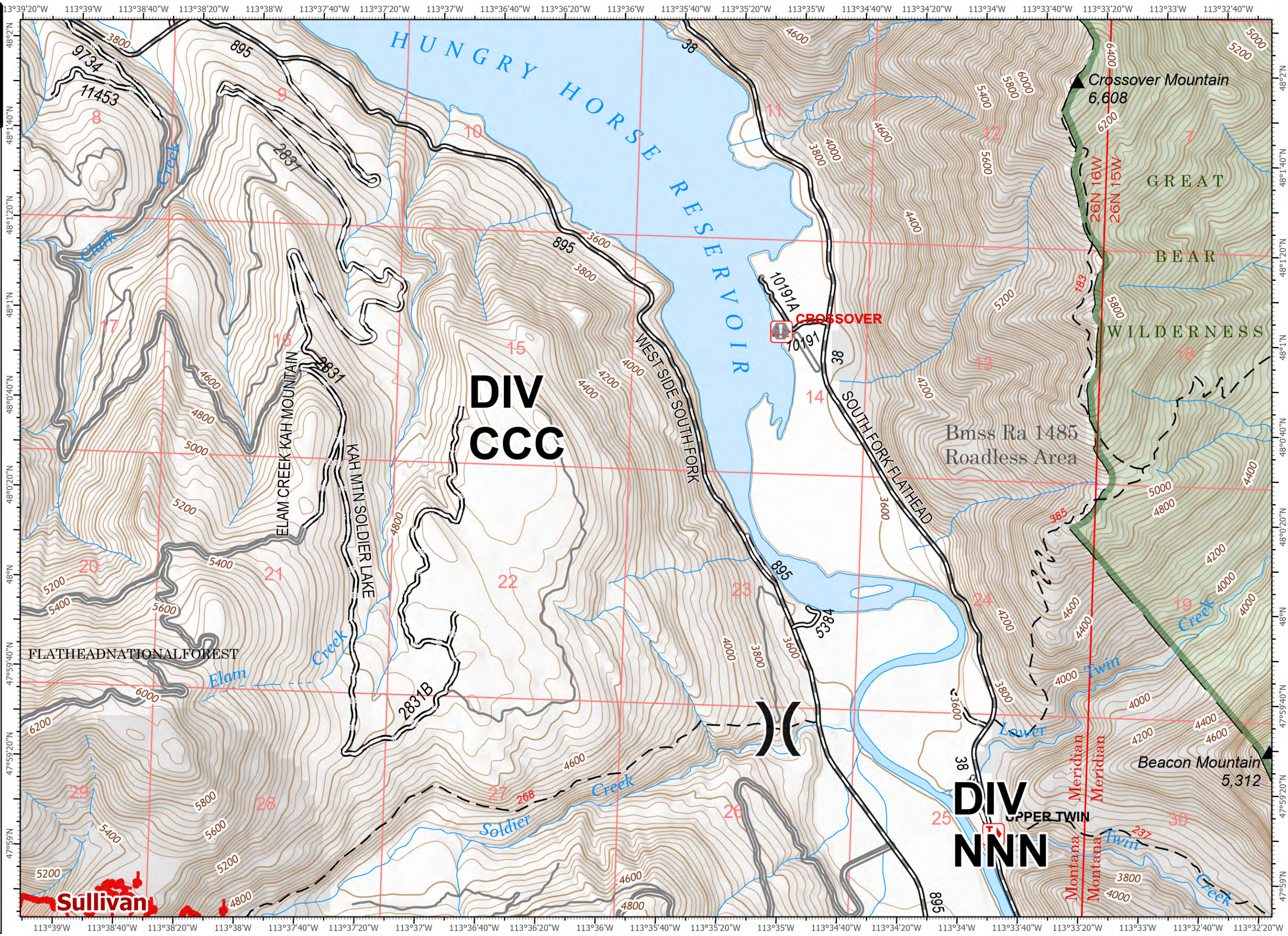
- ( ) Division Break
- ⬇ Value at Risk
- Uncontained
- Wildfire Daily Fire Perimeter
- Dirt Road
- Gravel Road
- Road, Not Maintained

DIV CCC & NNN













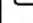



1	2
6	8
5	4

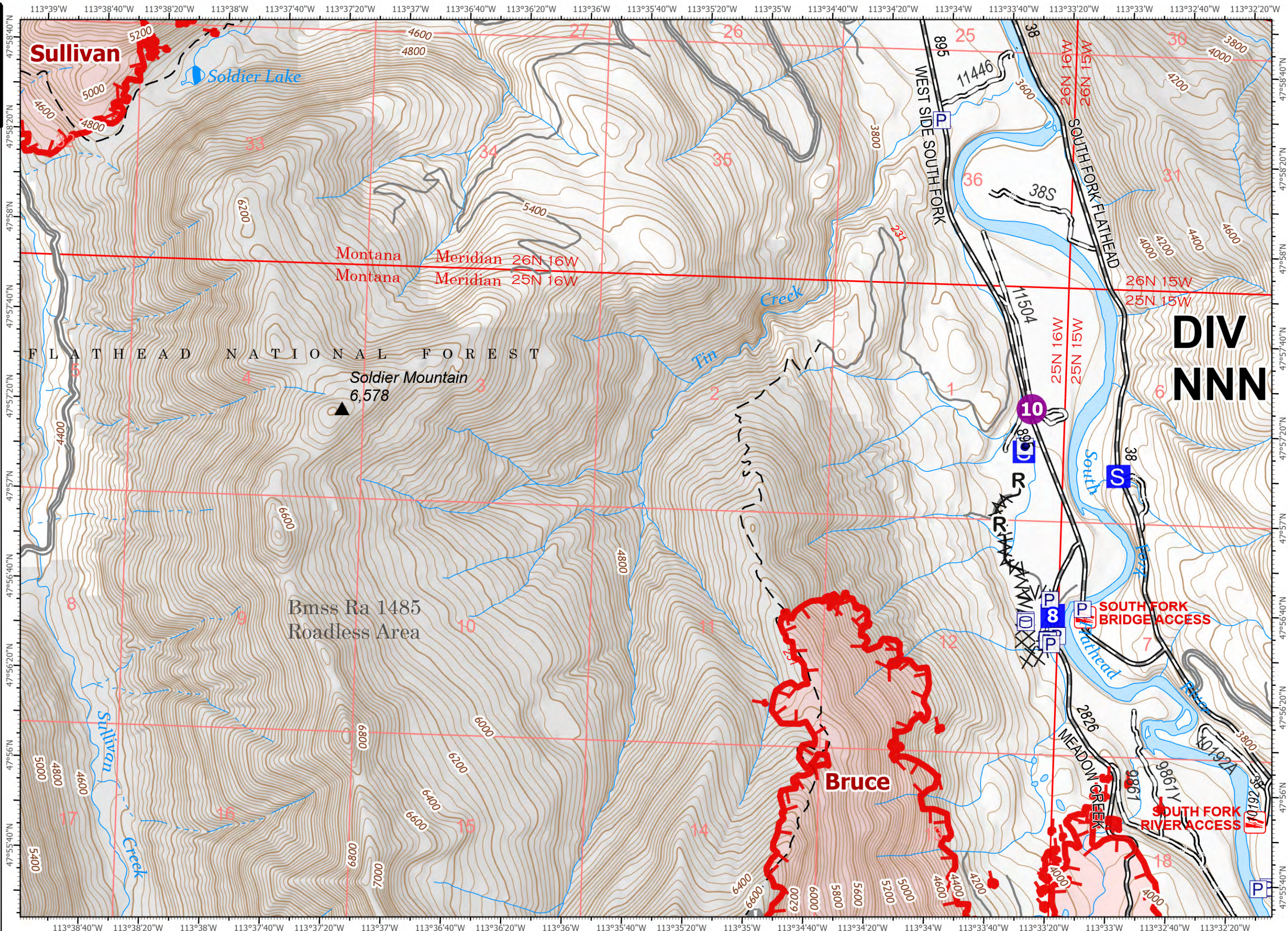
0 0.25 0.5  
Miles Scale: 1:24,000

8/19/2023 2305



Sullivan

-  Helispot
-  Drop Point
-  Staging Area
-  Value at Risk
-  Other Property
-  Pump
-  Water Tank
-  Uncontained
-  Completed Dozer Line
-  Completed Fuel Break
-  Completed Road as Line
-  Wildfire Daily Fire Perimeter
-  Structure
-  Dirt Road
-  Gravel Road
-  Road, Not Maintained



**DIV  
NNN**

Bmss Ra 1485  
Roadless Area

Soldier Mountain  
6,578

**Sullivan**

**Bruce**

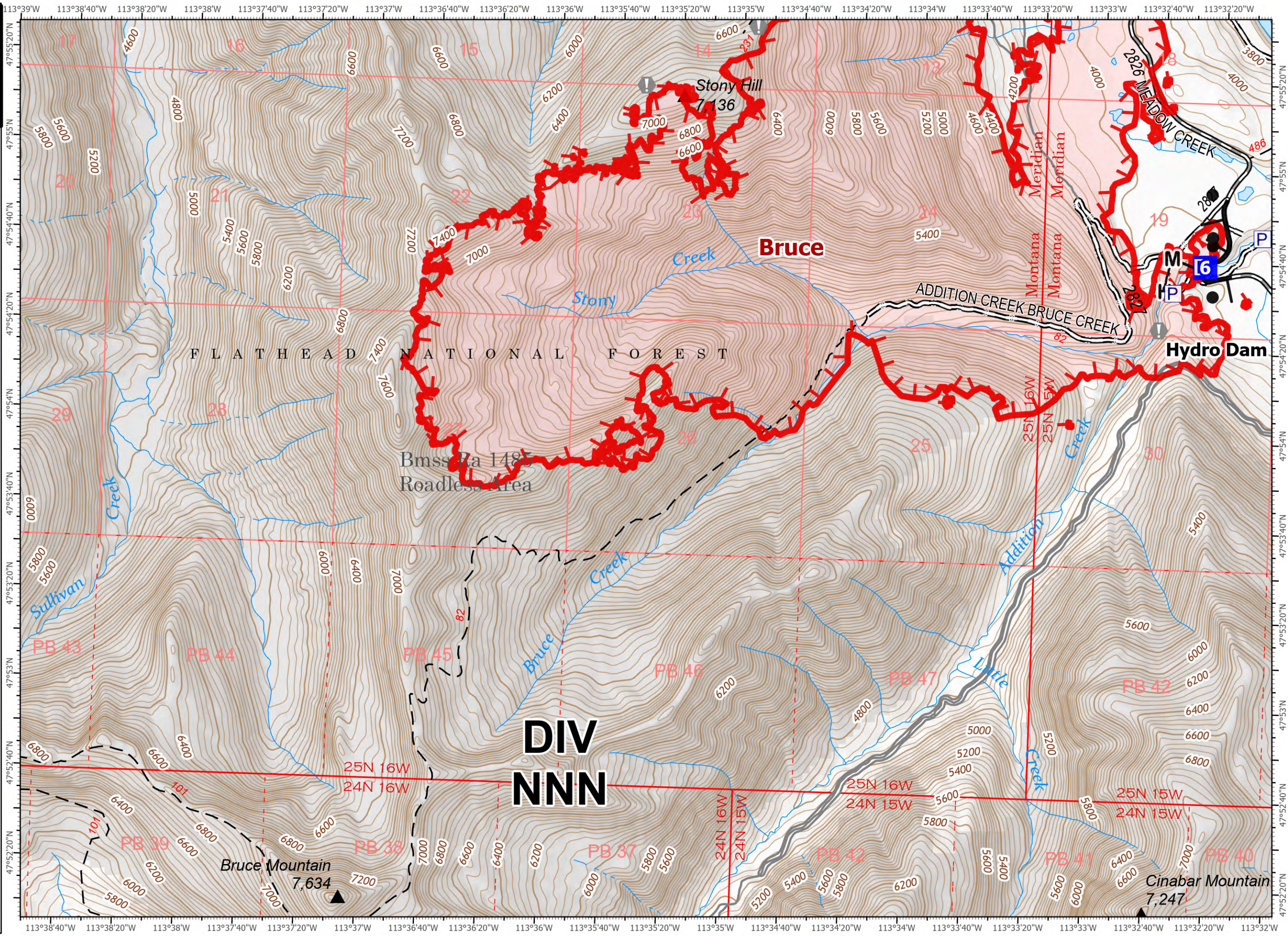
**SOUTH FORK  
BRIDGE ACCESS**

**SOUTH FORK  
RIVER ACCESS**

**DIV NNN**

1	2
6	3
5	4

- Drop Point
- Value at Risk
- Pump
- Uncontained
- Completed Burnout
- Completed Hand Line
- Completed Mixed Construction Line
- Wildfire Daily Fire Perimeter
- Structure
- Dirt Road
- Gravel Road
- Road, Not Maintained



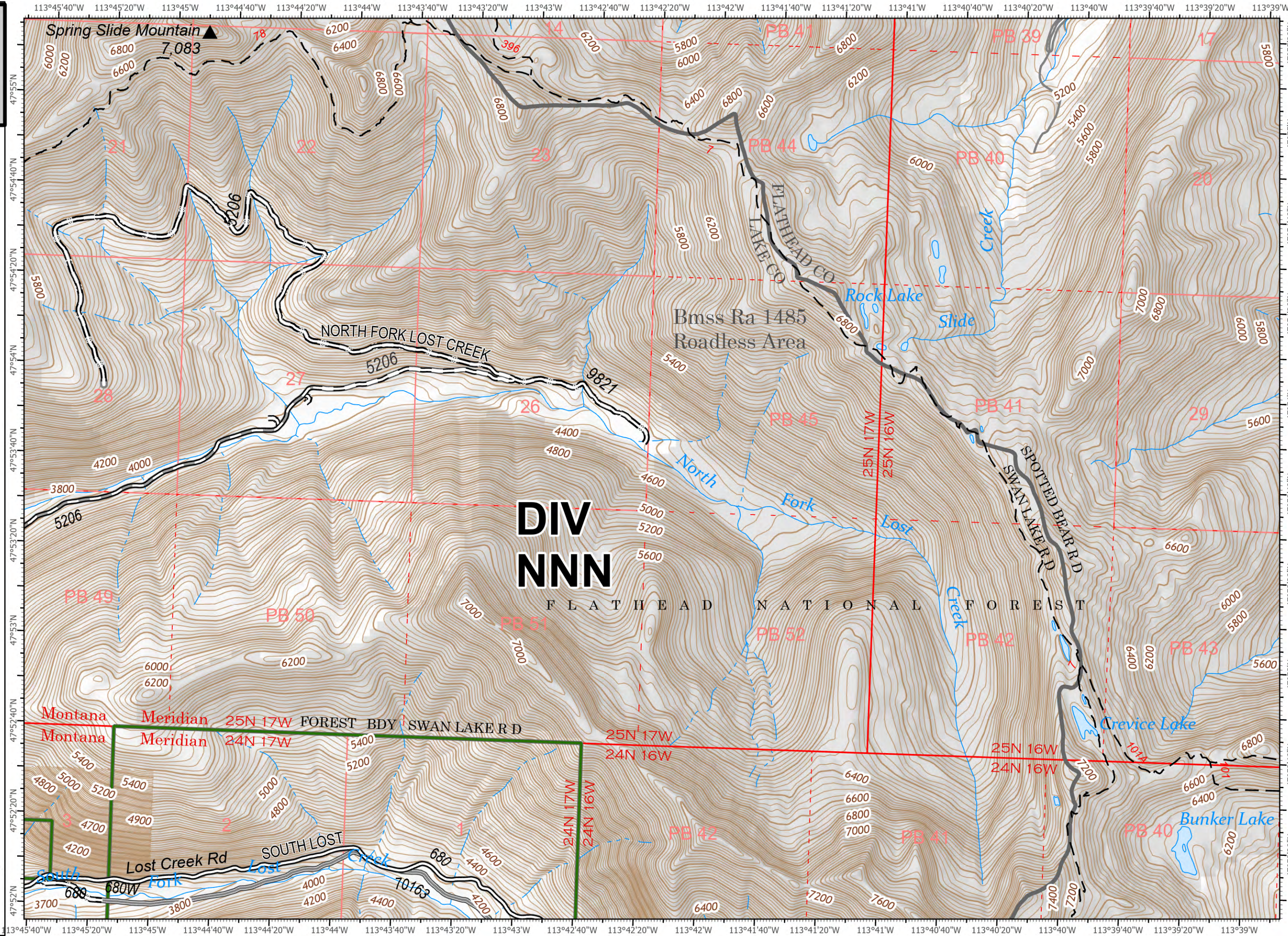
DIV NNN

1	2
6	3
5	4

0 0.25 0.5  
Miles Scale: 1:24,000

8/19/2023 2305

- Dirt Road
- Gravel Road
- Road, Not Maintained



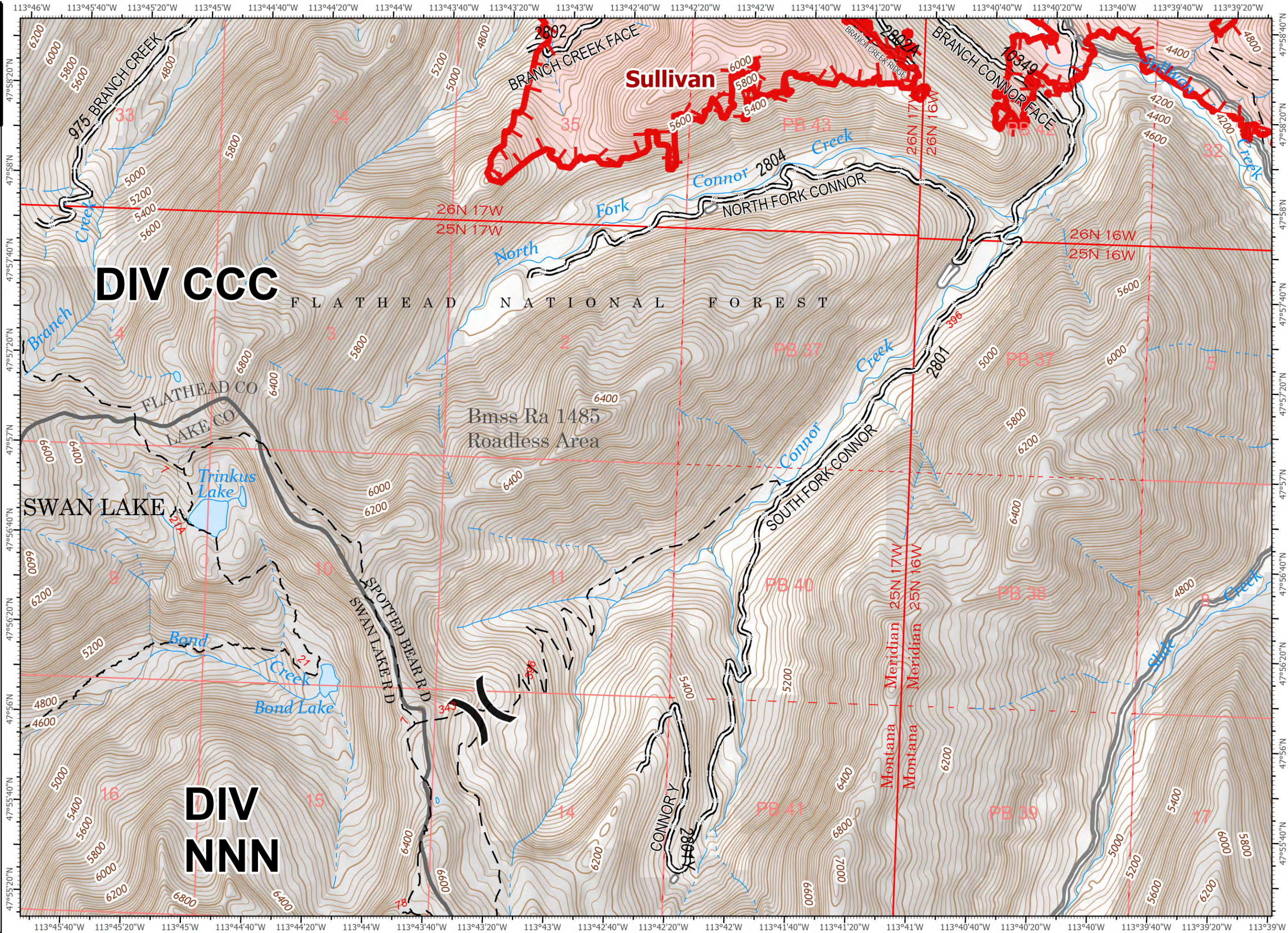
DIV NNN

1	2
6	3
5	4

Scale: 1:24,000  
0 0.25 0.5 Miles

8/19/2023 2305

- ( ) Division Break
- ▬ Uncontained
- ▬ Wildfire Daily Fire Perimeter
- ▬ Road, Not Maintained



**DIV CCC**

**DIV NNN**

FLATHEAD NATIONAL FOREST

Bmss Ra 1485  
Roadless Area

SWAN LAKE

DIV CCC & NNN

1	2
6	3
5	4

0 0.25 0.5  
Miles  
Scale: 1:24,000

8/19/2023 2305