

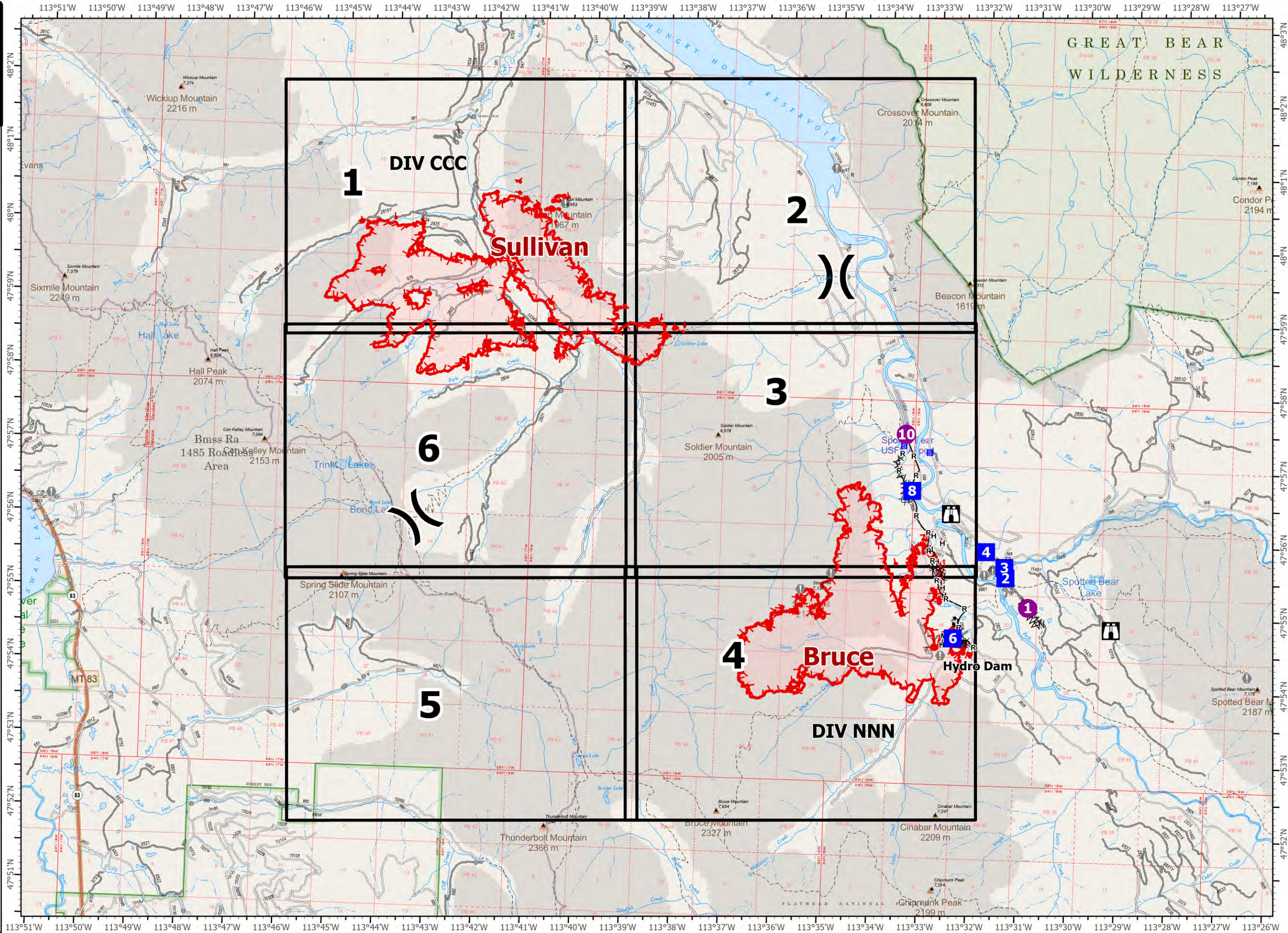
IAP

Tin Soldier

MT-FNF-000535

08/21/2023
0600

- Helispot
-) Division Break
- Drop Point
- Staging Area
- ⚠ Lookout
- ⚠ Value at Risk
- ⚠ Completed Burnout
- ⊘ Completed Dozer Line
- ⊘ Completed Fuel Break
- ⊘ Completed Hand Line
- ⊘ Completed Mixed Construction Line
- ⊘ Completed Road as Line
- Uncontained
- ▭ Wildfire Daily Fire Perimeter
- ▭ Map Grid Index
- ▭ Administrative FS Boundary
- ▭ USFS Wilderness
- ▭ USFS Roadless Areas
- ▭ Structure
- ▭ Forest Service Roads Open
- ▭ Forest Service Roads Closed
- ▭ Secondary Highway
- ▭ Secondary Dirt
- ▭ Secondary Highway
- ▭ Secondary Paved
- ▭ Secondary Dirt
- ▭ Trail



Scale: 1:80,000

0 0.85 1.7 Miles

8/21/2023 0018
North American 1983
Datum: LatLong Gnd

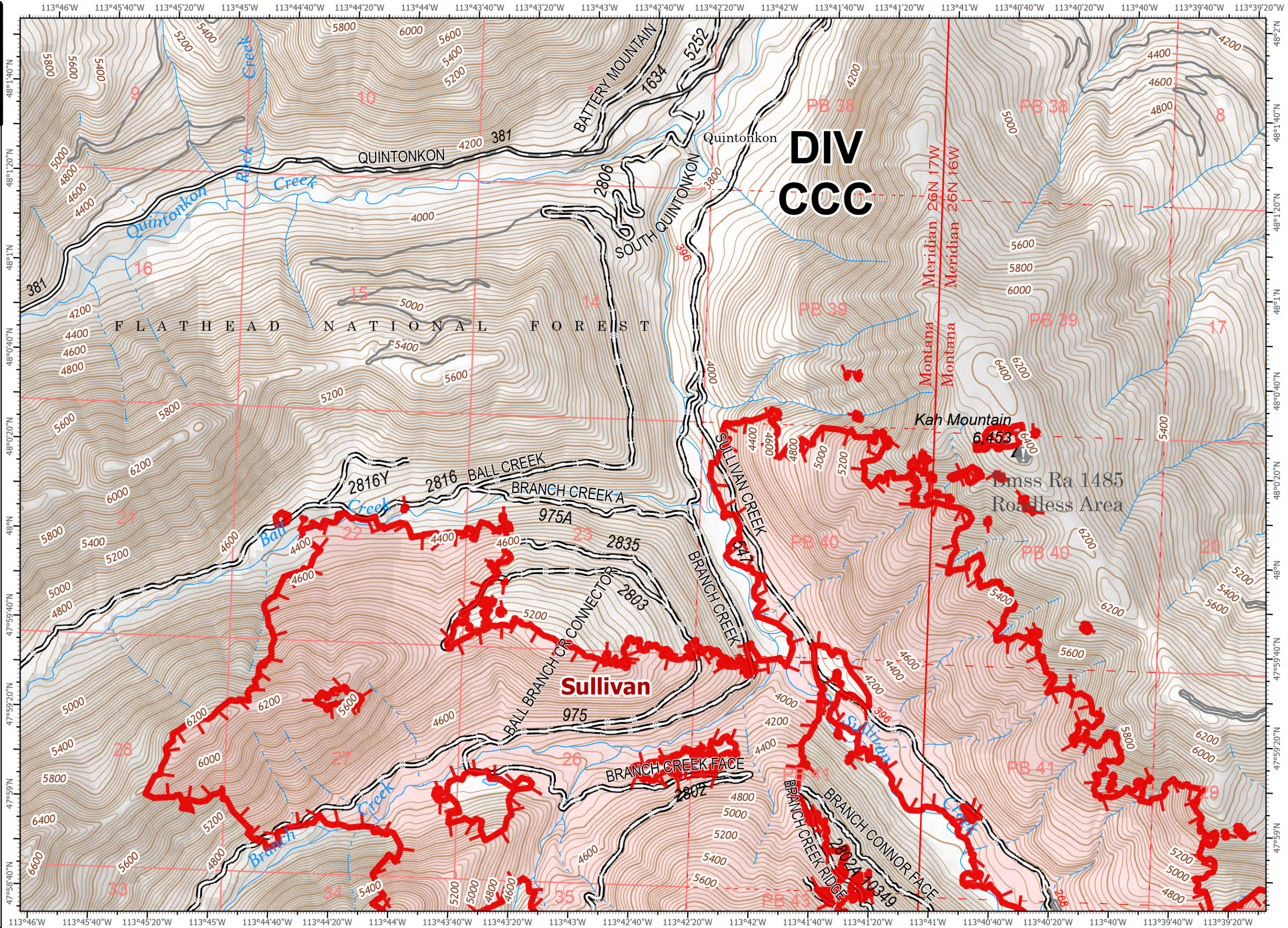
IAP - PAGE 1

Tin Soldier

MT-FNF-000535

08/21/2023
0600

- Value at Risk
- Uncontained
- Wildfire Daily Fire Perimeter
- Structure
- Dirt Road
- Gravel Road
- Road, Not Maintained



DIV CCC

1	2
6	3
5	4

0 0.25 0.5
Miles Scale: 1:24,000

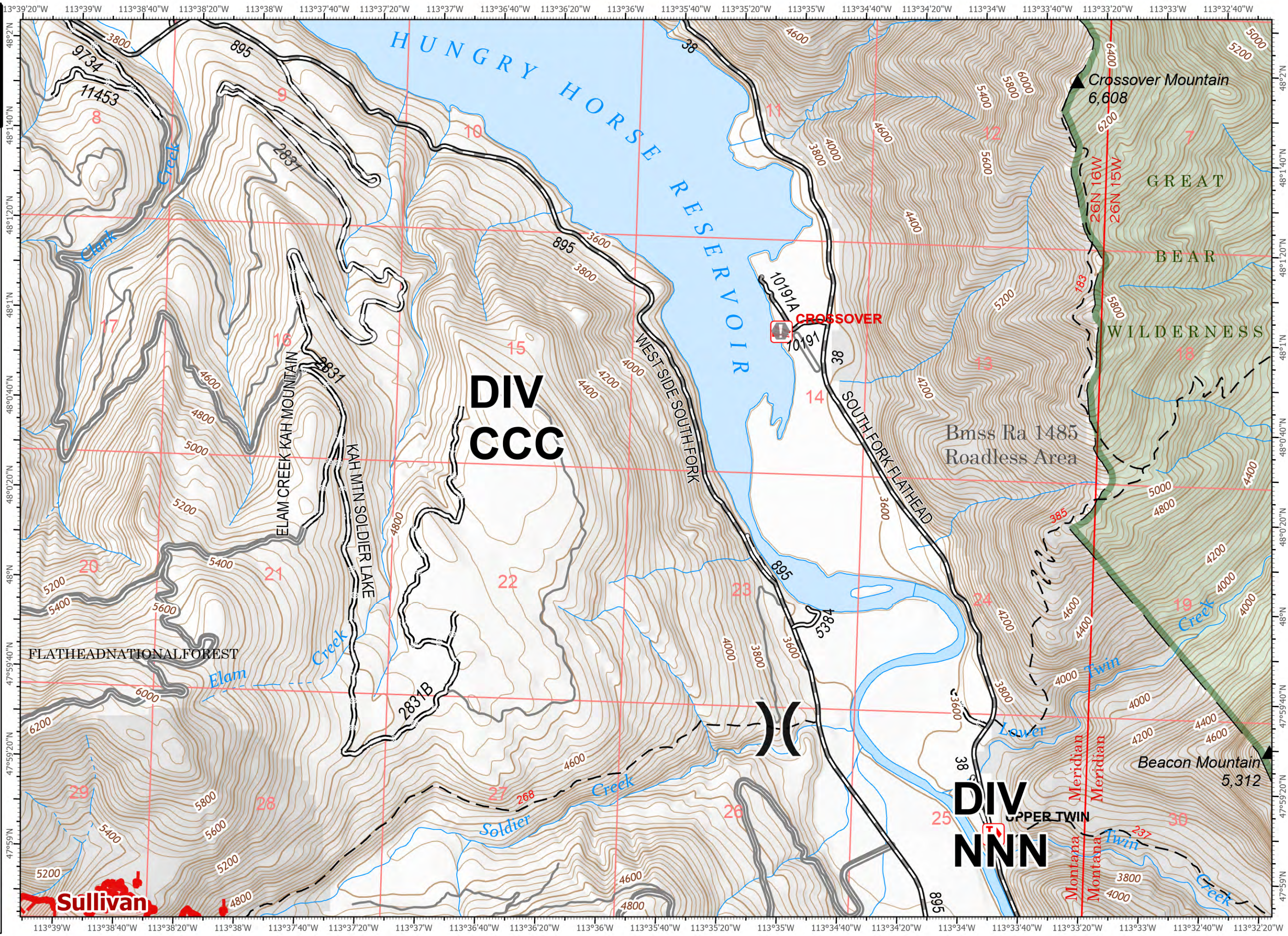
8/21/2023 0008

- () Division Break
- ⬇ Value at Risk
- Uncontained
- Wildfire Daily Fire Perimeter
- Dirt Road
- Gravel Road
- Road, Not Maintained

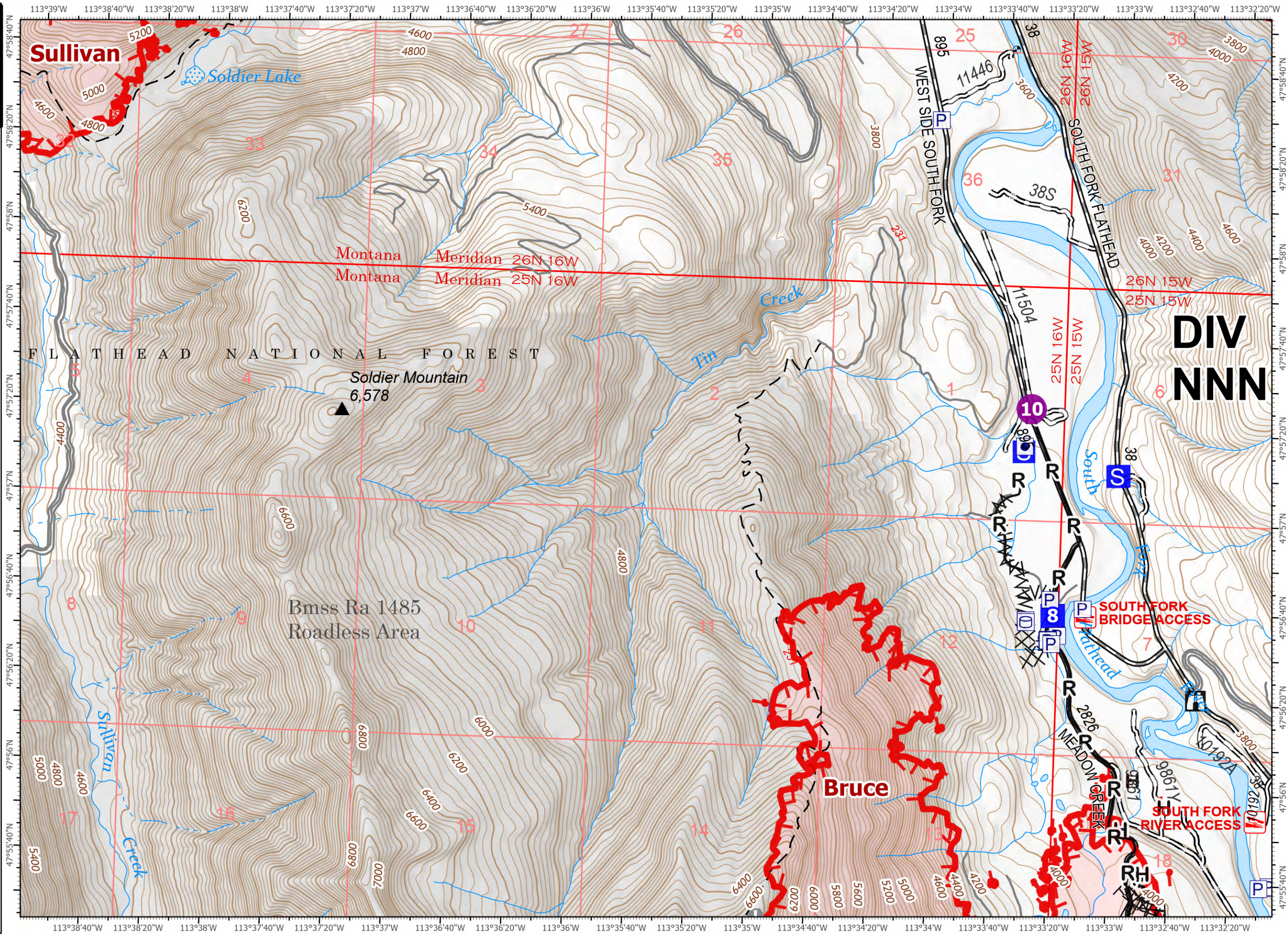
DIV CCC & NNN

1	2
6	8
5	4

0 0.25 0.5
Miles Scale: 1:24,000



- Helispot
- Drop Point
- Staging Area
- Lookout
- Value at Risk
- Other Property
- Pump
- Water Tank
- Uncontained
- Completed Dozer Line
- Completed Fuel Break
- Completed Hand Line
- Completed Road as Line
- Wildfire Daily Fire Perimeter
- Structure
- Dirt Road
- Gravel Road
- Road, Not Maintained



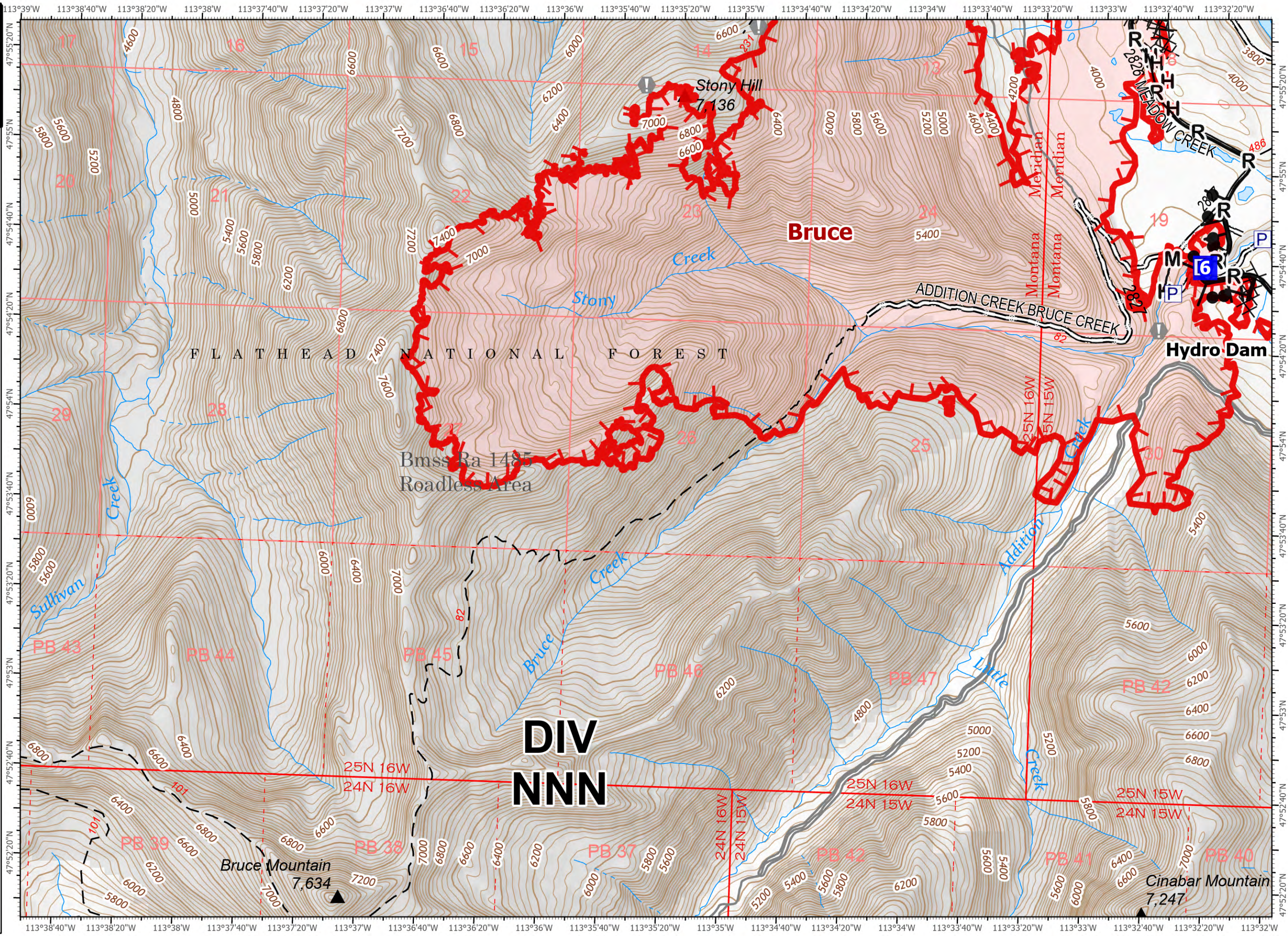
**DIV
NNN**

DIV NNN

1	2
6	3
5	4

Scale: 1:24,000
8/21/2023 0008

- Drop Point
- Value at Risk
- Pump
- Uncontained
- Completed Burnout
- Completed Dozer Line
- Completed Hand Line
- Completed Mixed Construction Line
- Completed Road as Line
- Wildfire Daily Fire Perimeter
- Structure
- Dirt Road
- Gravel Road
- Road, Not Maintained




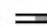
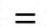
DIV NNN

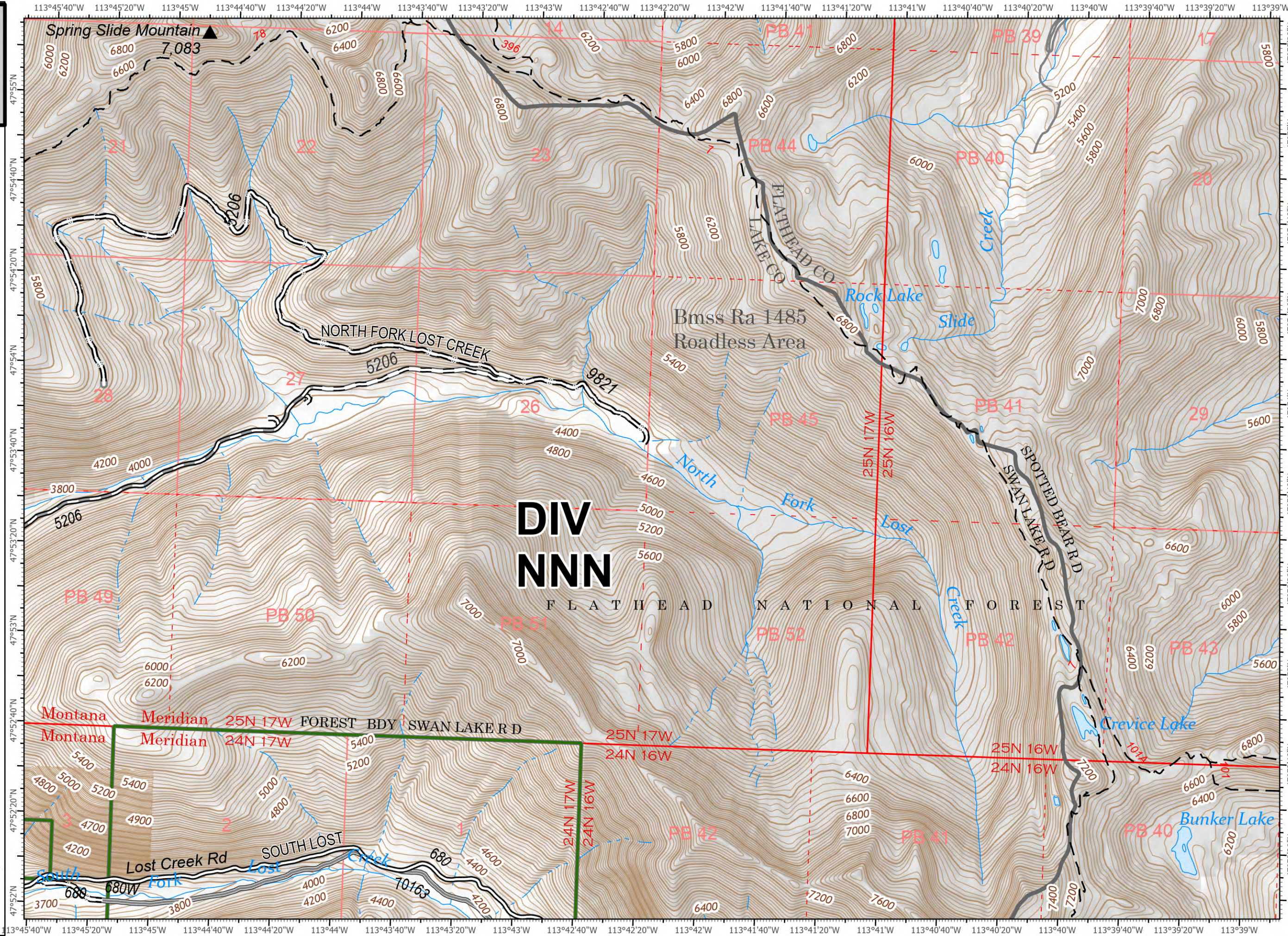
1	2
6	3
5	4

DIV NNN

0 0.25 0.5 Miles Scale: 1:24,000

8/21/2023 0008


-  Dirt Road
-  Gravel Road
-  Road, Not Maintained





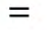
DIV NNN

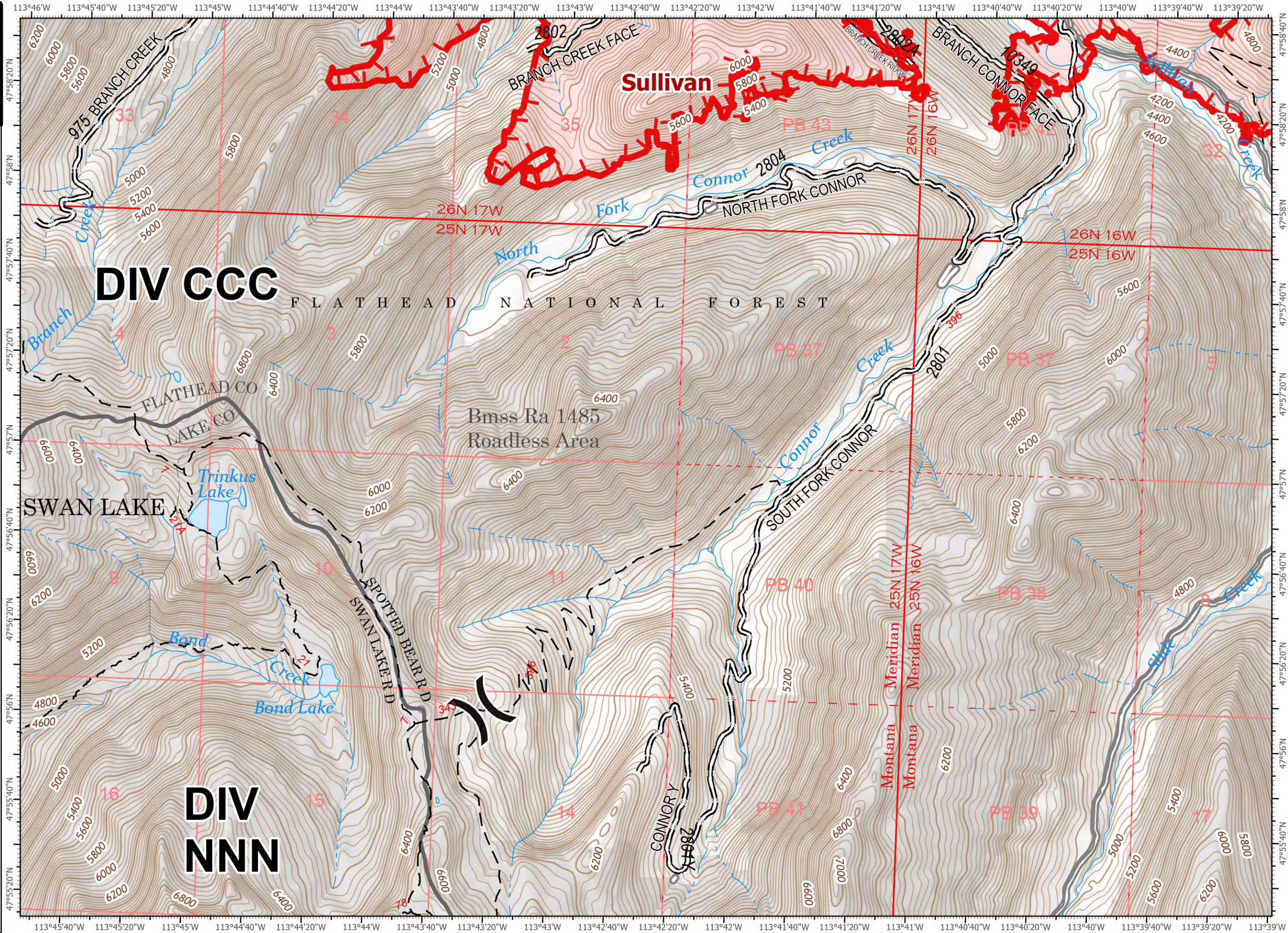
1	2
6	3
5	4

Scale: 1:24,000
0 0.25 0.5 Miles



8/21/2023 0008

- () Division Break
-  Uncontained
-  Wildfire Daily Fire Perimeter
-  Road, Not Maintained



DIV CCC

FLATHEAD NATIONAL FOREST

Bmss Ra 1485
Roadless Area

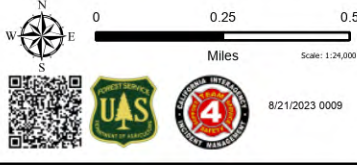
SWAN LAKE

**DIV
NNN**

DIV CCC & NNN

1	2
6	3
5	4

0 0.25 0.5
Miles Scale: 1:24,000



8/21/2023 0009