

INCIDENT ACTION PLAN



Ridge

MT-FNF-000518

P1QGT5 (0110)

Doris Point

MT-FNF-000496

P1QJ6J (0110)

Tin Soldier

MT-FNF-000535

P1QGHA (0110)



OPERATIONAL PERIOD


AUGUST 21, 2023

0600 – 1800



INTENTIONALLY LEFT BLANK

ORGANIZATION ASSIGNMENT LIST (ICS 203)

| | | | | | |
|---|---|---|---|---|---|
| 1. Incident Name: RIDGE / DORIS POINT / TIN SOLDIER | | 2. Operational Period: Date From: 8/21/2023 Time From: 0600 | | Date To: 8/21/2023 Time To: 1800 | |
| 3. Incident Commander(s) and Command Staff: | | | 7. Operation Section: | | |
| IC/UC's | Rocky W. Opliger / Jake Cagle(T) | | Operations | David Pereira / Kyle Jacobson / Drew Graham / Kerri Williamson(T) | |
| Deputy | Mike Nobles | | Tin Soldier Operations | Joe Gonzalez | |
| Safety Officer | Michael Alforque / Mike Huneke(T) | | Night Ops | | |
| Information Officer | Stephanie Bishop / Sean Collins / Darren McMillin(T) | | Staging Area | | |
| Liaison Officer | Jason Collier / Sam Willbanks | | Branch | | |
| HRSP | Adam Alvarez | | Division/Group | A / M | Ryan Regelin / Nathan Basford(T) |
| 4. Agency/Organization Representatives: | | | Division/Group | R | Grahm Rice |
| Agency/Organization | Name | | Division/Group | W | Dave Soldavini |
| MT-FNF AA | Carol Hatfield | | Division/Group | Staging | |
| MT-FNF AA | Lisa Timchak | | Division/Group | DD | Guy Wilson |
| MT-FNF AA | MJ Crandall | | Division/Group | CCC | Cache Gibbons |
| IBA MT-FNF | Biddy Simet | | Division/Group | NNN | Kyle Benke / Zak Parmentier(T) |
| Flathead County Sheriff | Brian Heino | | Division/Group | | |
| NPS Glacier | David Roemer | | Division/Group | | |
| IARR | Matt Dillon | | Division/Group | | |
| IARR | Dan Anerino | | Division/Group | | |
| Coram Experimental Forest | David Wright | | Branch | | |
| CCC AREP | Miguel Diaz | | Division/Group | | |
| 5. Planning Section: | | | Division/Group | | |
| Chief | Jeremy Camacho(T) | | Division/Group | | |
| Deputy | Thomas Reaves(T) | | Division/Group | | |
| Resource Unit | Sergio Arjonilla / Ryan Da Rosa(T) / Jeff Oliver(T) / Dwayne Preston(T) | | Branch | | |
| Situation Unit | Michael Hoose / Damian Guilliani / John Hamer / Daniel Eiszele | | Division/Group | | |
| Lead READ | Elliot Meyer | | Division/Group | | |
| Documentation Unit | RIST (Virtual) | | Division/Group | | |
| Demobilization Unit | Brian Talbott | | Division/Group | | |
| GISS | Matthew Eister / Erin Opliger / Travis Coughlin / Chris Barrett | | Air Operations Branch | | Director: Staci Dickson |
| FBAN | Diondray Wiley / RJ Hannah(T) | | Air Support Group Supervisor | | Rita Clipperton / Roger Caballero (T) |
| IMET | Bob Hoenisch | | Air Tactical Group Supervisor | | Jay Walter |
| Air Resource Advisor | Paul Corrigan | | | | |
| Training Tech Spec | Emil Picchi (Virtual) | | | | |
| ITSS | James Whiteside / Darren Howard / Gabe Marquez | | | | |
| SCKN | Matthew Valley / Ben Turcea(T) | | | | |
| 6. Logistics Section | | | | | |
| Chief | Cheryl Raines / Jennifer Wells(T) | | | | |
| Supply Unit | Jennifer Armstrong | | 8. Finance/Administration Section: | | |
| Facilities Unit | Martie Hale / Adam Briggs(T) | | Chief | Judy Reynolds / Vicki Wilson | |
| Ground Support Unit | Jeff Burch | | Time Unit | Sheila Miner / Theresa Rendon (Virtual) | |
| Communications Unit | Salvador Bonilla Jr. / Kevin Janes | | Procurement Unit | Craig Ericson | |
| Medical Unit | Erick Williams / Jeffrey Brooks(T) / Samuel Crenshaw(T) | | Comp/Claims Unit | Scott Parsons | |
| Food Unit | Jan Palecek | | Cost Unit | Tami Monahan | |
| Security Manager | Kevin Arnold | | EQTR | Loni Holt / Evelyn Trujillo (Virtual) | |
| RCDM | Aron Levin / DeQuincy Gordon(T) | | | | |
| Prepared By: Name: | Jeff Oliver | Position/Title: | RESL(T) | Signature: |  |
| ICS 203 | | Date/Time: | 8/20/2023 2300 hours | | |



Ridge/Doris Point Fire Weather Forecast



FORECAST NO: 13

PREDICTION FOR: Monday

SHIFT DATE: 08/21/23

FORECAST ISSUED: 08/20/23 at 2000 MDT

NAMES OF FIRES: Ridge, Doris Point

UNIT: MT-Flathead National Forest

SIGNED: Bob Hoenisch - Incident Meteorologist

text/email obs: 406-899-4112/robert.hoenisch@noaa.gov

WEATHER DISCUSSION: Deep moisture associated with the remnants of Hurricane Hilary will move across the Northern Rockies today, bringing widespread rain by this afternoon, which may be moderate to heavy at times late this afternoon into this evening. Continuous rain is most likely to develop this afternoon and continue through this evening, when some isolated thunderstorms are also possible. Total precipitation amounts of 0.50" to 0.75" are likely (60-70% probability) with a 30% chance for localized higher amounts to around 1.00" in locations that experience thunderstorms. Rain looks to diminish Tuesday morning, but additional moisture circulating through the area will maintain some showers through Tuesday evening.

TODAY:

SKY/WEATHER: Cloudy with rain developing in the afternoon. Isolated thunderstorms possible. Moderate to briefly heavy rainfall at times late in the afternoon.

Max Temperature: 70-75 lower elevations (below 4500 ft) and 64-69 mid-slopes to ridges.

Min RH: 46-51% lower elevations (below 4500 ft) and 52-57% mid-slopes to ridges

20 ft WINDS: Slope/Valley – East up to 7 mph.

Ridgetop – East 5-10 mph with gusts to around 15 mph.

LAL: 2 **Chance of Wetting Rain (0.10"):** 90% **HAINES INDEX:** 2 (Very Low)

TONIGHT:

SKY/WEATHER: Cloudy with rain, moderate to briefly heavy at times in the evening, tapering to showers after midnight. Isolated evening thunderstorms.

Min Temperature: 52-57.

Max RH: Greater than 90%.

20 ft WINDS: Slope/Valley – East 4 to 9 mph, becoming southeast after midnight.

Ridgetop – East winds 5-10 mph with gusts to 15 mph, becoming southeast after midnight.

LAL: 2 **Chance of Wetting Rain (0.10"):** 100%

Outlook for TUESDAY:

SKY/WEATHER: Cloudy. Rain decreasing to scattered showers by afternoon.

Max Temperature: 71-77 lower elevations (below 4500 ft) and 65-70 mid-slopes to ridges.

Min RH: 43-48% lower elevations (below 4500 ft) and 48-53% mid-slopes to ridges

20 ft WINDS: Slope/Valley – South up to 7 mph.

Ridgetop – South 5-10 mph with gusts to around 15 mph.

Extended Forecast Discussion: Another weather disturbance lifting across the Pacific Northwest Wednesday brings a chance for afternoon showers and thunderstorms with increased west winds following this system on Thursday. Gradual warming and drying is expected late this week into the weekend.

| 8/20/2023 observations thru 2000 | Min Temp | Max RH | Max Temp | Min RH | Peak Wind | Precipitation |
|----------------------------------|----------|--------|----------|--------|-----------|---------------|
| Spotted Bear Lookout (7202') | 45 | 72% | 62 | 56% | S 16 mph | 0.00" |
| IRAWS46-Desert Mtn (6360') | 46 | 65% | 65 | 46% | E 18 mph | 0.00" |
| IRAWS45-Firefighter Mtn (5683') | 49 | 63% | 68 | 43% | S13 mph | 0.00" |
| Spotted Bear RS (3725') | 43 | 83% | 76 | 38% | S 6 mph | 0.00" |
| West Glacier RAWS (3165') | 51 | 62% | 78 | 33% | N 15 mph | 0.00" |
| Hungry Horse RAWS (3123') | 49 | 70% | 79 | 33% | E 11 mph | 0.00" |

FIRE BEHAVIOR FORECAST

| | |
|---|--|
| FORECAST NUMBER: 13 | TYPE OF FIRE Wildfire |
| FIRE NAME: Ridge | OPERATIONAL PERIOD Monday August 21, 2023 |
| DATE ISSUED Sunday August 20, 2023 | TIME ISSUED 2100 |
| UNIT MT-Flathead National Forest | SIGNED RJ Hannah Fire Behavior Analyst (FBAN-t) |

INPUTS

WEATHER SUMMARY

WEATHER Cloudy with rain developing in the afternoon. Isolated thunderstorms possible. Moderate to briefly heavy rainfall at times late in the afternoon.

MAX TEMP: 70-75 lower elevations (below 4500 ft) and 64-69 mid-slopes to ridges

Humidity: 46-51% lower elevations (below 4500 ft) and 52-57% mid-slopes to ridges

20 FOOT WINDS: Valleys/Lower Slope: East up to 7 Mph.

Ridge/Upper slope: East 5-10 mph with gusts to around 18 mph.

Chance of Wetting Rain (0.10"): 90%

Haines Index: 2 (Very Low) LAL 2

FUELS: The major fuel types, found in and around the fire area include compact timber stands, timber Understory, brush and heavy down and dead.

Ignition Receptiveness: ERC: 34 **Burn Index:** 27

Probability of Ignition: 0-30% **Spotting distance:** Ridge top timber 0-mile, brush 0-mile

Dryness: Dead and down fuel moistures: **1 hour** – 23% **10 hour**-20 %, **100 hour** -16%, **1000 hour**-13%.

FIRE BEHAVIOR

Forecasted weather conditions (showers) will decrease fire activity. Fuels remain dry and receptive but, as rain continues the fuels will become increasingly resistance to ignitions and growth. Fire behavior will continue to minimize and reduce as moisture limits behavior. Some ground fire movement can occur if the fuels have a significant amount of heat, sheltered and or in a heavy dead and down fuel loading fuels profile. Overall fire behavior will be more creeping and smoldering. Continued easterly wind is forecasted for today's shift. Be mindful of how your work location may be affected as wind orientation is in transitioning.

SPECIFIC FIRE BEHAVIOR:

Division A: Minimal fire activity, interior smoldering and creeping.

Division M: Minimal fire behavior, interior smoldering and creeping.

Division R: Minimal fire behavior, interior smoldering and creeping.

Division W: Minimal fire behavior, interior smoldering and creeping.

Division DD: Doris Fire, Minimal behavior as the precipitation sets into the area the fuels become less receptive to ignitions and spread. Overall fire behavior will be creeping and smoldering.

Aviation Safety/ Watchout:

Is this flight necessary to accomplish the mission? Is there another way to achieve mission success?

Safety Message/ Watch Out Situations:

When conditions change, step back, evaluate your situation, identify any new hazards, and make sure your hazard mitigations are still valid.

ASSIGNMENT LIST (ICS 204 WF)

CONTROLLED UNCLASSIFIED
INFORMATION/BASIC

| | | | |
|--|--|------------------|-----------------|
| 1. Incident Name: | 2. Operational Period: | 3. Branch | Division |
| RIDGE / DORIS POINT / TIN SOLDIER | Date From: 08/21/23 Date To: 08/21/23 Time From: 0600 Time To: 1800 | A / M | |

4. Operations Personnel: Page 1 of 2

| | |
|--|---|
| Operations Section Chief: David Pereira / Kyle Jacobson / Drew Graham / Kerri Williamson(T) Branch Director: Division/Group Supervisor: Ryan Regelin / Nathan Basford(T) | Night Ops: Branch Safety: Air Attack: Jay Walter |
|--|---|

| 5. Resources Assigned: | | ** Resources Below in Bold are 12 Hour ** | | | | | |
|-------------------------|-----|---|-------------------------|-----------|--------------|------------------|------------------------|
| Resource Identifier | INC | LWD | Leader | Personnel | Request # | Hours | Reporting Location |
| CRW2IA TETON IHC | RID | 8/21 | KULLA, TYLER | 22 | C-8 | 0600-1800 | RIVER RANCH ICP |
| CRW2 MARLETTE PEAK | RID | 8/27 | FOSTER, JASON | 23 | C-9 | 0600-1800 | RIVER RANCH ICP |
| CRW2 R&R CONTRACTING | RID | 8/30 | ROCHA, CRISTOBAL | 20 | C-30 | 0600-1800 | RIVER RANCH ICP |
| CRW2 IRON MOUNTAIN 6 | RID | 8/29 | SANTANA, ISRAEL | 20 | C-19 | 0600-1800 | RIVER RANCH ICP |
| CRW2 WEST COAST 33 | RID | 8/30 | GONZALEZ, LUIS | 20 | C-33 | 0600-1800 | RIVER RANCH ICP |
| ENG3 MISSOULA CITY | RID | 8/25 | WILLIAMS, JEREMY | 3 | E-96 | 0600-1800 | RIVER RANCH ICP |
| ENG3 AAA FORESTRY | RID | 8/25 | MIX-CATRON, JEFF | 3 | E-112 | 0600-1800 | RIVER RANCH ICP |
| ENG3 LL MEADOW WILDFIRE | RID | 8/25 | GRACIE, REED | 3 | E-109 | 0600-1800 | RIVER RANCH ICP |
| ENG3 SOLOMON | RID | 8/23 | SOLOMON, TODD | 3 | E-97 | 0600-1800 | RIVER RANCH ICP |
| *ENG6 MT-FNF-E671 | RID | | SIROIS | 3 | | 0600-1800 | RIVER RANCH ICP |
| ENG6 EAST MISSOULA | RID | 8/25 | FERGUSON, TANNER | 2 | E-94 | 0600-1800 | RIVER RANCH ICP |
| ENG6 DENNISON LOGGING | RID | 8/20 | DENNISON, CURTIS | 2 | E-42 | 0600-1800 | RIVER RANCH ICP |
| WTS2 R2K ENTERPRISES | RID | 8/31 | BIRD, HIRAM | 1 | E-26 | 0600-1800 | RIVER RANCH ICP |
| SKG3 SCHLEGEL | RID | 8/29 | HUNT, NATHAN | 2 | E-89 | 0600-1800 | RIVER RANCH ICP |
| TFLD(T) RABLIN | RID | 8/25 | RABLIN, EDWARD | 1 | O-101 | 0600-1800 | RIVER RANCH ICP |
| EMPF SMITH | RID | 9/3 | SMITH, ROBERT | 1 | O-110 | 0600-1800 | RIVER RANCH ICP |
| EMTF FURRH | RID | 9/2 | FURRH, CALEB | 1 | O-113 | 0600-1800 | RIVER RANCH ICP |
| EMPF FOX | RID | 9/2 | FOX, JAMES | 1 | O-109 | 0600-1800 | RIVER RANCH ICP |

6. Work Assignments:
 Mop-up and secure control lines to the extent necessary to keep fire in its current footprint.
 Backhaul as needed.

7. Special Instructions:
 Before doing work in the Coram Experimental Forest, coordinate with REAF Elliot Meyer (406) 897-0794.
 FOBS Keys and Lobre may be conducting work in division and will check in with DIVS prior to conducting work.
 REAFs will be working throughout all divisions. REAFs will contact DIVS when they enter and exit divisions.
 *Denotes local resources on loan to the incident.

8. Communications

| Name | Ch | Function | Rx Freq | Rx Tone | Tx Freq | Tx Tone | Mode | Notes |
|----------|----|-------------|----------|------------|----------|------------|------|-----------------------|
| NIFC C3 | 1 | COMMAND | 170.4250 | (T3) 131.8 | 168.0750 | (T3) 131.8 | A | COMMAND TO ICP |
| TAC 4 | 4 | TACTICAL | 168.0500 | (T3) 131.8 | 168.0500 | (T3) 131.8 | A | |
| A/G PRI | 13 | A/G PRI | 173.8375 | 0.0 | 173.8375 | (T2) 123.0 | A | AIR TO GROUND PRIMARY |
| TAN | 15 | MEDICAL A/G | 155.3400 | 0.0 | 155.3400 | (T6) 156.7 | A | |
| AIRGUARD | 16 | AIRGUARD | 168.6250 | 0.0 | 168.6250 | (T1) 110.9 | A | |

9. Prepared by: Name: Sergio Arjonilla / Ryan Da Rosa(T) / Jeff Oliver(T) / Dwayne Preston(T) RESL
 Signature: _____
ICS 204 Date/Time: 8/20/2023 2200 Personnel Count: 131

ASSIGNMENT LIST (ICS 204 WF)

CONTROLLED UNCLASSIFIED
INFORMATION//BASIC

| | | | | | | | | | |
|--|-----|--|---|-------------------|--------------|----------------------|------------------------|-----------------------|--|
| 1. Incident Name: | | 2. Operational Period: | | | | 3. Branch | | Division | |
| RIDGE / DORIS POINT / TIN SOLDIER | | Date From: 08/21/23 | | Date To: 08/21/23 | | R | | Romeo | |
| | | Time From: 0600 | | Time To: 1800 | | | | | |
| 4. Operations Personnel: | | | | | | Page 1 of 2 | | | |
| Operations Section Chief: David Pereira / Kyle Jacobson / Drew Graham / Kerri Williamson(T) | | | Night Ops: | | | | | | |
| Branch Director: | | | Branch Safety: | | | | | | |
| Division/Group Supervisor: Grahm Rice | | | Air Attack: Jay Walter | | | | | | |
| 5. Resources Assigned: | | ** Resources Below in Bold are 12 Hour ** | | | | | | | |
| Resource Identifier | INC | LWD | Leader | Personnel | Request # | Hours | Reporting Location | | |
| CRW1 TATANKA IHC | RID | 8/30 | ZORTMAN, DAVID | 18 | C-26 | 0600-1800 | RIVER RANCH ICP | | |
| CRW1 LEWIS & CLARK IHC | RID | 8/24 | WYDRA, NICHOLAS | 22 | C-14 | 0600-1800 | RIVER RANCH ICP | | |
| CRW1 ALTA IHC | RID | 8/21 | BOGDANOFF, BRYAN | 22 | C-11 | 0600-1800 | RIVER RANCH ICP | | |
| CRW2 WEST COAST 31 | RID | 8/30 | OLMOS, JULIO | 20 | C-31 | 0600-1800 | RIVER RANCH ICP | | |
| CRW2 PNW FIRE | RID | 8/28 | ESQUIBEL, MIGUEL | 20 | C-20 | 0600-0600 | RIVER RANCH ICP | | |
| ENG3 CASTLE MOUNTAIN | RID | 8/25 | TILLER, JOHN | 3 | E-111 | 0600-1800 | RIVER RANCH ICP | | |
| ENG3 SHERIDAN | RID | 8/25 | SHERIDAN, BOB | 4 | E-110 | 0600-1800 | RIVER RANCH ICP | | |
| WTS2 WALKING Y4 | RID | 8/31 | HELSLEY, AL | 1 | E-27 | 0600-1800 | RIVER RANCH ICP | | |
| WTS2 MARTIN CITY | RID | 8/24 | TORPIN, TOM | 2 | E-61 | 0600-1800 | RIVER RANCH ICP | | |
| DO22 CATCH INC | RID | 8/24 | ONEIL, Jr., DAN | 2 | E-108 | 0600-1800 | RIVER RANCH ICP | | |
| DO22 SIDERIUS | RID | 9/1 | SIDERIUS, DAN | 2 | E-1 | 0600-1800 | RIVER RANCH ICP | | |
| DO23 YEAGER | RID | 8/22 | YEAGER, DOUG | 2 | E-91 | 0600-1800 | RIVER RANCH ICP | | |
| SKG3 ROCKY MOUNTAIN | RID | 9/6 | MEYER, DEVIN | 2 | E-67 | 0600-1800 | RIVER RANCH ICP | | |
| MAST2 J3 CONTRACTING | RID | 9/6 | GRANT, WILLIAM | 2 | E-84 | 0600-1800 | RIVER RANCH ICP | | |
| FEL1 TAMARACK | RID | 9/1 | GEORGE, SHELBY | 1 | E-21 | 0600-1800 | RIVER RANCH ICP | | |
| SKD1 TAMARACK TIMBER | RID | 8/27 | GEORGE, SHELBY | 2 | E-126 | 0600-1800 | RIVER RANCH ICP | | |
| HETF SIDERIUS | RID | 9/1 | SIDERIUS, DAN | 7 | E-2 | 0600-1800 | RIVER RANCH ICP | | |
| LOGL SLACK | RID | 9/1 | SLACK, JAMIE | 1 | E-34 | 0600-1800 | RIVER RANCH ICP | | |
| 6. Work Assignments: | | | | | | | | | |
| Scout and plan for direct/indirect control lines. | | | | | | | | | |
| Install control lines where appropriate to prevent fire spread to the North and East. | | | | | | | | | |
| 7. Special Instructions: | | | | | | | | | |
| FOBS Keys and Lobre may be conducting work in division and will check in with DIVS prior to conducting work. | | | | | | | | | |
| REAFS will be working throughout all divisions. REAFs will contact DIVS when they enter and exit divisions. | | | | | | | | | |
| 8. Communications | | | | | | | | | |
| Name | Ch | Function | Rx Freq | Rx Tone | Tx Freq | Tx Tone | Mode | Notes | |
| NIFC C3 | 1 | COMMAND | 170.4250 | (T3) 131.8 | 168.0750 | (T3) 131.8 | A | COMMAND TO ICP | |
| TAC 7 | 7 | TACTICAL | 166.7250 | (T3) 131.8 | 166.7250 | (T3) 131.8 | A | | |
| A/G PRI | 13 | A/G PRI | 173.8375 | 0.0 | 173.8375 | (T2) 123.0 | A | AIR TO GROUND PRIMARY | |
| TAN | 15 | MEDICAL A/G | 155.3400 | 0.0 | 155.3400 | (T6) 156.7 | A | | |
| AIRGUARD | 16 | AIRGUARD | 168.6250 | 0.0 | 168.6250 | (T1) 110.9 | A | | |
| 9. Prepared by: Name: | | | | | | | | | |
| | | | Sergio Arjonilla / Ryan Da Rosa(T) / Jeff Oliver(T) / Dwayne Preston(T) | | | RESL | | | |
| | | | | | | Signature: _____ | | | |
| ICS 204 | | Date/Time: 8/20/2023 2200 | | | | Personnel Count: 133 | | | |

ASSIGNMENT LIST (ICS 204 WF)

CONTROLLED UNCLASSIFIED
INFORMATION//BASIC

| | | | |
|--|--|------------------|-----------------|
| 1. Incident Name: | 2. Operational Period: | 3. Branch | Division |
| RIDGE / DORIS POINT / TIN SOLDIER | Date From: 08/21/23 Date To: 08/21/23 Time From: 0600 Time To: 1800 | R | Romeo |
| 4. Operations Personnel: | | Page 2 of 2 | |

| | |
|--|---|
| Operations Section Chief: David Pereira / Kyle Jacobson / Drew Graham / Kerri Williamson(T) Branch Director: Division/Group Supervisor: Grahm Rice | Night Ops: Branch Safety: Air Attack: Jay Walter |
|--|---|

| 5. Resources Assigned: | | ** Resources Below in Bold are 12 Hour ** | | | | | |
|------------------------|-----|---|-------------------------|-----------|-----------|-----------|--------------------|
| Resource Identifier | INC | LWD | Leader | Personnel | Request # | Hours | Reporting Location |
| LOGL SIDERIUS | RID | 9/1 | CLOUSE, BRANDON | 1 | E-35 | 0600-1800 | RIVER RANCH ICP |
| LOGT MATHENY LINE | RID | 8/30 | MATHENY, TIMOTHY | 1 | E-132 | 0600-1800 | RIVER RANCH ICP |
| LOGT RONKOSKI TRUCKING | RID | 8/30 | KOSKI, RON | 1 | E-133 | 0600-1800 | RIVER RANCH ICP |
| TFLD MECHAM | RID | 8/27 | MECHAM, BODE | 1 | O-138 | 0600-1800 | RIVER RANCH ICP |
| TFLD(T) ZIMMER | RID | 9/1 | ZIMMER, PATRICK | 1 | O-185 | 0600-1800 | RIVER RANCH ICP |
| HEQB KNAPP | RID | 8/28 | KNAPP, KYLER | 1 | O-190 | 0600-1800 | RIVER RANCH ICP |
| HEQB CZYSCON | RID | 9/1 | CZYSCON, DREW A | 1 | O-187 | 0600-1800 | RIVER RANCH ICP |
| HEQB EMERSON | RID | 9/2 | EMERSON, ZACH | 1 | O-188 | 0600-1800 | RIVER RANCH ICP |
| EMPF RAHM | RID | 9/2 | RAHM, AYALA | 1 | O-208 | 0600-1800 | RIVER RANCH ICP |
| EMTF ROTELLA | RID | 9/2 | ROTELLA, STEPHEN | 1 | O-211 | 0600-1800 | RIVER RANCH ICP |
| EMTF OLSEN | RID | 9/2 | OLSEN, CHRIS | 1 | O-210 | 0600-1800 | RIVER RANCH ICP |
| MEDV UTV MEDICS 1 | RID | 8/28 | SPEARS, JUSTIN | 2 | O-63 | 0600-1800 | RIVER RANCH ICP |
| SOFR MAGUIRE | RID | 8/30 | MAGUIRE, TROY AL | 1 | O-157 | 0600-1800 | RIVER RANCH ICP |
| | | | | | | | |
| | | | | | | | |
| | | | | | | | |
| | | | | | | | |
| | | | | | | | |

6. Work Assignments:
 Scout and plan for direct/indirect control lines.
 Install control lines where appropriate to prevent fire spread to the North and East.

7. Special Instructions:
 FOBS Keys and Lobre may be conducting work in division and will check in with DIVS prior to conducting work.
 REAFS will be working throughout all divisions. REAFs will contact DIVS when they enter and exit divisions.

| 8. Communications | | | | | | | | |
|-------------------|----|-------------|----------|------------|----------|------------|------|-----------------------|
| Name | Ch | Function | Rx Freq | Rx Tone | Tx Freq | Tx Tone | Mode | Notes |
| NIFC C3 | 1 | COMMAND | 170.4250 | (T3) 131.8 | 168.0750 | (T3) 131.8 | A | COMMAND TO ICP |
| TAC 7 | 7 | TACTICAL | 166.7250 | (T3) 131.8 | 166.7250 | (T3) 131.8 | A | |
| A/G PRI | 13 | A/G PRI | 173.8375 | 0.0 | 173.8375 | (T2) 123.0 | A | AIR TO GROUND PRIMARY |
| TAN | 15 | MEDICAL A/G | 155.3400 | 0.0 | 155.3400 | (T6) 156.7 | A | |
| AIRGUARD | 16 | AIRGUARD | 168.6250 | 0.0 | 168.6250 | (T1) 110.9 | A | |

9. Prepared by: Name: Sergio Arjonilla / Ryan Da Rosa(T) / Jeff Oliver(T) / Dwayne Preston(T) RESL

Signature: _____

ICS 204 Date/Time: 8/20/2023 2200 Personnel Count: 14

ASSIGNMENT LIST (ICS 204 WF)

CONTROLLED UNCLASSIFIED
INFORMATION//BASIC

| | | | | | | | | | |
|--|------------|--|---------------------------|-------------------------------|--------------|---------------------|------------------------|-----------------------|--|
| 1. Incident Name: | | 2. Operational Period: | | | | 3. Branch | | Division | |
| RIDGE / DORIS POINT / TIN SOLDIER | | Date From: 08/21/23 | | Date To: 08/21/23 | | W | | Whiskey | |
| | | Time From: 0600 | | Time To: 1800 | | | | | |
| 4. Operations Personnel: | | | | | | Page 1 of 1 | | | |
| Operations Section Chief: David Pereira / Kyle Jacobson / Drew Graham / Kerri Williamson(T) | | | | Night Ops: | | | | | |
| Branch Director: | | | | Branch Safety: | | | | | |
| Division/Group Supervisor: Dave Soldavini | | | | Air Attack: Jay Walter | | | | | |
| 5. Resources Assigned: | | ** Resources Below in Bold are 12 Hour ** | | | | | | | |
| Resource Identifier | INC | LWD | Leader | Personnel | Request # | Hours | Reporting Location | | |
| CRW2IA MIDEWIN | RID | 8/25 | HOFFMAN, JERRY | 19 | C-16 | 0600-1800 | RIVER RANCH ICP | | |
| CRW2IA PATRICK 17 | RID | 8/21 | BEARD, BENJAMIN | 20 | C-17 | 0600-0600 | RIVER RANCH ICP | | |
| CRW2 IRON MOUNTAIN 18 | RID | 8/29 | CHIPREZ, JESSE | 20 | C-18 | 0600-1800 | RIVER RANCH ICP | | |
| CRW2 WEST COAST 32 | RID | 8/30 | MARTINEZ, BENJAMIN | 18 | C-32 | 0600-1800 | RIVER RANCH ICP | | |
| ENG6 BIGFORK 382 | RID | 8/28 | REFFNER, SEAN | 4 | E-60 | 0600-1800 | RIVER RANCH ICP | | |
| ENG6 BRENTESON RANCH | RID | 8/22 | RIPHENBURG, SHAUN | 3 | E-95 | 0600-1800 | RIVER RANCH ICP | | |
| WTT1 CEDAR CITY | RID | 8/29 | SMITH, JORDAN | 2 | E-123 | 0600-1800 | RIVER RANCH ICP | | |
| WTT2 UCON FD | RID | 8/23 | NORMAN, KENDALL | 2 | E-99 | 0600-1800 | RIVER RANCH ICP | | |
| DOZ2 SIKES LOGGING | RID | 8/24 | SIKES, GREGORY | 2 | E-107 | 0600-1800 | RIVER RANCH ICP | | |
| SKG2 DENNISON | RID | 8/23 | DENNISON, LARRIK | 2 | E-90 | 0600-1800 | RIVER RANCH ICP | | |
| HEQB JENKINS | RID | 8/26 | JENKINS, ANDREW W | 1 | O-141 | 0600-1800 | RIVER RANCH ICP | | |
| HEQB(T) ROVA | RID | 8/26 | ROVA, LEIF | 1 | O-152 | 0600-1800 | RIVER RANCH ICP | | |
| EMPF SCHMIDT | RID | 8/31 | SCHMIDT, RODNEY | 1 | O-96 | 0600-1800 | RIVER RANCH ICP | | |
| EMTF GRIFFITH | RID | 9/1 | GRIFFITH, HAYDEN | 1 | O-116 | 0600-1800 | RIVER RANCH ICP | | |
| MEDV WILDERNESS MEDICS | RID | 9/6 | OSIADACZ, ADAM | 2 | E-129 | 0600-1800 | RIVER RANCH ICP | | |
| SOF2 LEMKE | RID | 9/3 | LEMKE, KIM F | 1 | O-206 | 0600-1800 | RIVER RANCH ICP | | |
| 6. Work Assignments: | | | | | | | | | |
| Mop-up and patrol to ensure fire remains within control lines. | | | | | | | | | |
| Consolidate supplies and trash, arrange for backhaul as necessary. | | | | | | | | | |
| 7. Special Instructions: | | | | | | | | | |
| FOBS Keys and Lobre may be conducting work in division and will check in with DIVS prior to conducting work. | | | | | | | | | |
| REAFS will be working throughout all divisions. REAFs will contact DIVS when they enter and exit divisions. | | | | | | | | | |
| 8. Communications | | | | | | | | | |
| Name | Ch | Function | Rx Freq | Rx Tone | Tx Freq | Tx Tone | Mode | Notes | |
| NIFC C3 | 1 | COMMAND | 170.4250 | (T3) 131.8 | 168.0750 | (T3) 131.8 | A | COMMAND TO ICP | |
| TAC 8 | 8 | TACTICAL | 166.7750 | (T3) 131.8 | 166.7750 | (T3) 131.8 | A | | |
| A/G PRI | 13 | A/G PRI | 173.8375 | 0.0 | 173.8375 | (T2) 123.0 | A | AIR TO GROUND PRIMARY | |
| TAN | 15 | MEDICAL A/G | 155.3400 | 0.0 | 155.3400 | (T6) 156.7 | A | | |
| AIRGUARD | 16 | AIRGUARD | 168.6250 | 0.0 | 168.6250 | (T1) 110.9 | A | | |
| 9. Prepared by: Name: | | | | | | | | | |
| Sergio Arjonilla / Ryan Da Rosa(T) / | | | | RESL | | | | | |
| Jeff Oliver(T) / Dwayne Preston(T) | | | | Signature: _____ | | | | | |
| ICS 204 | | Date/Time: 8/20/2023 2200 | | | | Personnel Count: 99 | | | |

ICS 205 - INCIDENT RADIO COMMUNICATIONS PLAN

CONTROLLED UNCLASSIFIED
INFORMATION/BASIC

| 1. Incident Name: RIDGE / DORIS POINT / TIN SOLDIER Incident Channels | | 2. Date/Time Prepared Date: 08/20/2023 Time: 1900 | | 3. Operational Period: Date From: 08/21/23 Time From: 0600 | | Date To: Time To: 1800 | | | |
|---|---------------|---|-----------------|--|------------|---------------------------|-------------|------|-------------------------|
| 4. Communications | | | | | | | | | |
| Ch# | Function | Name | Assigned To | Rx Freq | Rx Tone | Tx Freq | Tx Tone | Mode | Notes |
| 1 | COMMAND | NIFC C3 | ALL DIVS | 170.4250 | (T3) 131.8 | 168.0750 | (T3) 131.8 | A | COMMAND TO ICP |
| 2 | COMMAND | NIFC C6 | FUTURE | 168.4750 | (T3) 131.8 | 165.4000 | (T3) 131.8 | A | |
| 3 | | BLANK | FUTURE | | | | | | |
| 4 | TACTICAL | TAC 4 | DIV A / M | 168.0500 | (T3) 131.8 | 168.0500 | (T3) 131.8 | A | |
| 5 | TACTICAL | TAC 5 | FUTURE | 168.2000 | (T3) 131.8 | 168.2000 | (T3) 131.8 | A | |
| 6 | TACTICAL | TAC 6 | | 168.6000 | (T3) 131.8 | 168.6000 | (T3) 131.8 | A | |
| 7 | TACTICAL | TAC 7 | DIV R | 166.7250 | (T3) 131.8 | 166.7250 | (T3) 131.8 | A | |
| 8 | TACTICAL | TAC 8 | DIV W | 166.7750 | (T3) 131.8 | 166.7750 | (T3) 131.8 | A | |
| 9 | TACTICAL | TAC 9 | DIV DD | 168.2500 | (T3) 131.8 | 168.2500 | (T3) 131.8 | A | |
| 10 | FOREST RPT | DESERT | ALL DIVS | 173.1125 | 0.0 | 164.3750 | (T10) 107.2 | A | KALISPELL DISPATCH |
| 11 | MUTUAL FD TAC | RED | MUTUAL FIRE TAC | 154.0700 | 0.0 | 154.0700 | (T6) 156.7 | A | LOCAL FD TACTICAL |
| 12 | ROADS | ROADS | ALL DIVS | 151.5050 | 0.0 | 151.5050 | (T26) 94.8 | A | LOGGING TRAFFIC CONTROL |
| 13 | A/G PRI | A/G PRI | ALL DIVS | 173.8375 | 0.0 | 173.8375 | (T2) 123.0 | A | AIR TO GROUND PRIMARY |
| 14 | A/G SEC | A/G SEC | ALL DIVS | 171.8250 | 0.0 | 171.8250 | 0.0 | A | AIR TO GROUND SECONDARY |
| 15 | MEDICAL A/G | TAN | ALL DIVS | 155.3400 | 0.0 | 155.3400 | (T6) 156.7 | A | MEDICAL A/G |
| 16 | AIRGUARD | AIRGUARD | ALL DIVS | 168.6250 | 0.0 | 168.6250 | (T1) 110.9 | A | EMERGENCY CONTACT |
| 17 | | | | | | | | | |
| 18 | | | | | | | | | |
| 19 | | | | | | | | | |
| 20 | AIRGUARD | AIRGUARD | ALL DIVS | 168.6250 | 0.0 | 168.6250 | (T1) 110.9 | A | EMERGENCY CONTACT |

5. Special Instructions

* LAST CLONE 8/15/2023
COMMUNICATION PHONE NUMBER 208-850-2701

| | |
|--|---------------------|
| <p>6. Prepared by (Communications Unit Leader): Name: Sal Bonilla Jr. / Kevin Janes</p> | <p>Signature: </p> |
| NIMS IAP | Date/Time: 08/20/23 |
| ICS 205 - CONTROLLED UNCLASSIFIED INFORMATION/BASIC | 1900 |


8/20/23

ICS 205 - INCIDENT RADIO COMMUNICATIONS PLAN

| | | | | | | | |
|--|--|--|--|---|--|------------------------------------|--|
| 1. Incident Name: Initial Attack Page 2 | | 2. Date/Time Prepared Date: 08/20/2023 Time: 1900 | | 3. Operational Period: Date From: 08/21/23 Time From: 0600 | | Date To: 08/21/23 Time To: 1800 | |
|--|--|--|--|---|--|------------------------------------|--|

| 4. Communications | | | | | | | | | |
|-------------------|---------------|-----------|-------------------|----------|-------------|----------|-------------|------|-------------------|
| Ch# | Function | Name | Assigned To | Rx Freq | Rx Tone | Tx Freq | Tx Tone | Mode | Notes |
| 1 | TACTICAL | TAC 1. | | 172.2250 | (T10) 107.2 | 172.2250 | (T10) 107.2 | A | |
| 2 | TACTICAL | TAC 2. | | 172.3750 | (T10) 107.2 | 172.3750 | (T10) 107.2 | A | |
| 3 | TACTICAL | TAC 3 | | 154.3025 | (T10) 107.2 | 154.3025 | (T10) 107.2 | A | |
| 4 | TACTICAL | FNF WRK 1 | | 168.1625 | 0.0 | 168.1625 | (T7) 167.9 | A | |
| 5 | COMMAND | CMD DIR | RIDGE COMMAND DIR | 167.2500 | (T10) 107.2 | 167.2500 | (T10) 107.2 | A | |
| 6 | COMMAND | CMD RPT | RIDGE COMMAND RPT | 167.2500 | (T10) 107.2 | 162.2625 | (T10) 107.2 | A | |
| 7 | FOREST DIR | FNF DIR | FOREST DIRECT | 173.1125 | 0.0 | 173.1125 | (T2) 123.0 | A | |
| 8 | FOREST RPT | DESERT | FOREST REPEATER | 173.1125 | 0.0 | 164.3750 | (T10) 107.2 | A | |
| 9 | A/G | FNF A/G | FOREST A/G | 169.1250 | 0.0 | 169.1250 | (T7) 167.9 | A | |
| 10 | A/G | RIDGE A/G | ALL DIVS | 173.8375 | 0.0 | 173.8375 | (T2) 123.0 | A | |
| 11 | A/G | AREA A/G | 3 A/G52 | 168.3875 | 0.0 | 168.3875 | (T2) 123.0 | A | |
| 12 | MUTUAL FD TAC | MAROON | MUTUAL FD PRI | 154.2800 | 0.0 | 154.2800 | (T6) 156.7 | A | |
| 13 | MUTUAL FD TAC | SCARLET | MUTUAL FD SEC | 154.2950 | 0.0 | 154.2950 | (T6) 156.7 | A | |
| 14 | MUTUAL FD TAC | RED | MUTUAL FD IA | 154.0700 | 0.0 | 154.0700 | (T6) 156.7 | A | |
| 15 | MEDICAL A/G | TAN | MT MEDICAL A/G | 155.3400 | 0.0 | 155.3400 | (T6) 156.7 | A | MEDICAL A/G |
| 16 | AIRGUARD | AIRGUARD | ALL DIVS | 168.6250 | 0.0 | 168.6250 | (T1) 110.9 | A | EMERGENCY CONTACT |
| 17 | | | | | | | | | |
| 18 | | | | | | | | | |
| 19 | | | | | | | | | |
| 20 | AIRGUARD | AIRGUARD | ALL DIVS | 168.6250 | 0.0 | 168.6250 | (T1) 110.9 | A | EMERGENCY CONTACT |

5. Special Instructions
 * LAST CLONE 8/15/2023
 COMMUNICATION PHONE NUMBER 208-850-2701

| | | |
|---|--|--|
| 6. Prepared by (Communications Unit Leader): Name: Sal Bonilla Jr. / Kevin Janes | | Signature:  |
| ICS 205 - CONTROLLED UNCLASSIFIED INFORMATION/BASIC | | Date/Time: 08/20/23 1900 |

8/20/23

TIN SOLDIER



Tin Soldier Fire Weather Forecast



FORECAST NO: 04
PREDICTION FOR: Monday
SHIFT DATE: 08/21/23
FORECAST ISSUED: 08/20/23 at 2000 MDT

NAMES OF FIRES: Sullivan, Bruce
UNIT: MT-Flathead National Forest
SIGNED: Bob Hoenisch - Incident Meteorologist
text/email obs: 406-899-4112/robert.hoenisch@noaa.gov

WEATHER DISCUSSION: Deep moisture associated with the remnants of Hurricane Hilary will move across the Northern Rockies today, bringing widespread rain by this afternoon, which may be moderate to heavy at times late this afternoon into this evening. Continuous rain is most likely to develop this afternoon and continue through this evening, when some isolated thunderstorms are also possible. Total precipitation amounts of 0.50" to 0.75" are likely (60-70% probability) with a 30% chance for localized higher amounts to around 1.00" in locations that experience thunderstorms. Rain looks to diminish Tuesday morning, but additional moisture circulating through the area will maintain some showers through Tuesday evening.

TODAY:

SKY/WEATHER: Cloudy with rain developing in the afternoon. Isolated thunderstorms possible. Moderate to briefly heavy rainfall at times late in the afternoon.

Max Temperature: 68-73 lower elevations (below 5500 ft) and 62-67 mid-slopes to ridges.

Min RH: 46-51% lower elevations (below 5500 ft) and 52-57% mid-slopes to ridges

20 ft WINDS: Slope/Valley – East up to 7 mph.

Ridgetop – East 5-10 mph with gusts to around 15 mph.

LAL: 2 **Chance of Wetting Rain (0.10"):** 90% **HAINES INDEX:** 2 (Very Low)

TONIGHT:

SKY/WEATHER: Cloudy with rain, moderate to briefly heavy at times in the evening, tapering to showers after midnight. Isolated evening thunderstorms.

Min Temperature: 49-54.

Max RH: Greater than 90%.

20 ft WINDS: Slope/Valley – East 4 to 9 mph, becoming southeast after midnight.

Ridgetop – East winds 5-10 mph with gusts to 15 mph, becoming southeast after midnight.

LAL: 2 **Chance of Wetting Rain (0.10"):** 100%

Outlook for TUESDAY:

SKY/WEATHER: Cloudy. Rain decreasing to scattered showers by afternoon.

Max Temperature: 69-74 lower elevations (below 5500 ft) and 63-68 mid-slopes to ridges.

Min RH: 43-48% lower elevations (below 5500 ft) and 48-53% mid-slopes to ridges

20 ft WINDS: Slope/Valley – South up to 7 mph.

Ridgetop – South 5-10 mph with gusts to around 15 mph.

Extended Forecast Discussion: Another weather disturbance lifting across the Pacific Northwest Wednesday brings a chance for afternoon showers and thunderstorms with increased west winds following this system on Thursday. Gradual warming and drying is expected late this week into the weekend.

| 8/20/2023 observations thru 2000 | Min Temp | Max RH | Max Temp | Min RH | Peak Wind | Precipitation |
|--|----------|--------|----------|--------|-----------|---------------|
| Spotted Bear Lookout (7202') | 45 | 72% | 62 | 56% | S 16 mph | 0.00" |
| IRAWS46-Desert Mtn (6360') | 46 | 65% | 65 | 46% | E 18 mph | 0.00" |
| IRAWS45-Firefighter Mtn (5683') | 49 | 63% | 68 | 43% | S13 mph | 0.00" |
| Spotted Bear RS (3725') | 43 | 83% | 76 | 38% | S 6 mph | 0.00" |
| West Glacier RAWs (3165') | 51 | 62% | 78 | 33% | N 15 mph | 0.00" |
| Hungry Horse RAWs (3123') | 49 | 70% | 79 | 33% | E 11 mph | 0.00" |

FIRE BEHAVIOR FORECAST

| | |
|---|--|
| FORECAST NUMBER: 4 | TYPE OF FIRE Wildfire |
| FIRE NAME: Tin Soldier | OPERATIONAL PERIOD Monday August 21, 2023 |
| DATE ISSUED Sunday August 20, 2023 | TIME ISSUED 2100 |
| UNIT MT-Flathead National Forest | SIGNED RJ Hannah Fire Behavior Analyst (FBAN-t) |

INPUTS

WEATHER SUMMARY

WEATHER: Cloudy with rain developing in the afternoon. Isolated thunderstorms possible. Moderate to briefly heavy rainfall at times late in the afternoon.

MAX TEMP: 68-73 lower elevations (below 5500 ft) and 62-67 mid-slopes to ridges

Humidity: 46-51% lower elevations (below 5500 ft) and 52-57% mid-slopes to ridges

20 FOOT WINDS: Valleys/Lower Slope: East up to 7 Mph.

Ridge/Upper slope: East 5-10 mph with gusts to around 18 mph.

Chance of Wetting Rain (0.10"): 90%

Haines Index: 2 (Very Low) LAL 2

FUELS: The major fuel types, found in and around the fire area include compact timber stands, timber Understory, brush and heavy down and dead.

Ignition Receptiveness: ERC: 34 **Burn Index:** 27

Probability of Ignition: 0%-30% **Spotting distance:** Ridge top timber 0-mile, brush 0-mile

Dryness: Dead and down fuel moistures: **1 hour** -23% **10 hour**-20 %, **100 hour** -16%, **1000 hour**-13%.

FIRE BEHAVIOR

Forecasted weather conditions (showers) will decrease fire activity. Fuels remain dry and receptive but, as rain continues the fuels will become increasingly resistance to ignitions and growth. Fire behavior will continue to minimize and reduce as moisture limits behavior. Some ground fire movement can occur if the fuels have a significant amount of sheltered and or in a heavy dead and down fuel loading fuels profile. Overall fire behavior will be more creeping and smoldering. Continued easterly wind is forecasted for today's shift. Be mindful of how your work location may be affected as wind orientation is in transitioning.

SPECIFIC FIRE BEHAVIOR:

Sullivan Fire: Depending on the timing and rain fall amounts expect minimal fire behavior, West Flank, surface fire burning in heavy or sheltered fuels. North Flank, creeping and smoldering in Ball/Branch Creek. South Flank, creeping and smoldering in Sullivan Creek. Anticipate minimal fire behavior in the South Fork Connector drainage and into the Solider Creek drainage.

Bruce Fire: Minimal fire behavior. West Flank East Flank, North Flank and South Flank, creeping and smoldering. It is possible to see open flame and some fire movement in sheltered and or heavy dead and down fuels.

Aviation Safety/ Watchout:

Is this flight necessary to accomplish the mission? Is there another way to achieve mission success?

Safety Message/ Watch Out Situations:

When conditions change, step back, evaluate your situation, identify any new hazards, and make sure your hazard mitigations are still valid.

ICS 205 - INCIDENT RADIO COMMUNICATIONS PLAN

CONTROLLED UNCLASSIFIED INFORMATION/BASIC

| | | |
|--|--|---|
| 1. Incident Name: Tin Soldier Fire Page 3 | 2. Date/Time Prepared Date: 08/20/2023 Time: 1900 | 3. Operational Period: Date From: 08/21/23 Time From: 0600 Date To: 08/21/23 Time To: 1800 |
|--|--|---|

| 4. Communications | | | | | | | | | |
|-------------------|---------------|-----------|---------------|----------|------------|----------|-------------|------|---------------------------------------|
| Ch# | Function | Name | Assigned To | Rx Freq | Rx Tone | Tx Freq | Tx Tone | Mode | Notes |
| 1 | TACTICAL | TAC 1 | DIV CCC | 168.0500 | (T7) 167.9 | 168.0500 | (T7) 167.9 | A | |
| 2 | TACTICAL | TAC 2 | DIV NNN | 168.2000 | (T7) 167.9 | 168.2000 | (T7) 167.9 | A | |
| 3 | A/G | TIN A/G | ALL DIVS | 169.2625 | | 169.2625 | (T7) 167.9 | A | TIN AIR TO GROUND |
| 4 | TACTICAL | FNW WRK 1 | | 168.1625 | 0.0 | 168.1625 | (T7) 167.9 | A | |
| 5 | COMMAND | CMD SOUT | COMMAND | 173.1875 | (T7) 167.9 | 164.3875 | (T7) 167.9 | A | SPOTTED BEAR LOOKOUT - CMD LINK |
| 6 | COMMAND | CMD NORT | COMMAND | 168.1125 | (T7) 167.9 | 163.2875 | (T7) 167.9 | A | BAPTISTE LOOKOUT - CMD LINK |
| 7 | A/G | FNW A/G | | 169.1250 | 0.0 | 169.1250 | (T7) 167.9 | A | |
| 8 | FOREST RPT | DESERT | BACKUP TO ICP | 173.1125 | 0.0 | 164.3750 | (T10) 107.2 | A | HUNGRY HORSE AREA FOREST - LINKED |
| 9 | FOREST RPT | LOOKOUT | | 173.1125 | | 164.3750 | (T11) 114.8 | A | SPOTTED BEAR AREA - FOREST LINKED |
| 10 | FOREST RPT | BAPTISTE | | 173.1125 | | 164.3750 | (T13) 141.3 | A | MIDDLE RESERVOIR AREA - FOREST LINKED |
| 11 | TACTICAL | R1 TAC | | 167.1125 | | 167.1125 | (T7) 167.9 | A | |
| 12 | MUTUAL FD TAC | RED | | 154.0700 | 0.0 | 154.0700 | (T6) 156.7 | A | |
| 13 | TACTICAL | LOGGER2 | | 151.5050 | (T26) 94.8 | 151.5050 | (T26) 94.8 | A | |
| 14 | TACTICAL | LOGGER1 | DO NOT USE | 151.9250 | | 151.9250 | | A | DO NOT USE |
| 15 | TACTICAL | TAN / MED | ALL DIVS | 155.3400 | | 155.3400 | (T6) 156.7 | A | MEDICAL A/G |
| 16 | AIRGUARD | AIRGUARD | ALL DIVS | 168.6250 | 0.0 | 168.6250 | (T1) 110.9 | A | EMERGENCY CONTACT |
| 17 | | | | | | | | | |
| 18 | | | | | | | | | |
| 19 | | | | | | | | | |
| 20 | AIRGUARD | AIRGUARD | | 168.6250 | 0.0 | 168.6250 | (T1) 110.9 | A | EMERGENCY CONTACT |

5. Special Instructions

* LAST CLONE 8/15/2023
COMMUNICATION PHONE NUMBER 208-850-2701

| | |
|---|--|
| 6. Prepared by (Communications Unit Leader): Name: Sal Bonilla Jr. / Kevin Janes | Signature:  |
| NIMS IAP | Date: 08/20/23 |
| ICS 205 - CONTROLLED UNCLASSIFIED INFORMATION/BASIC | 1900 |

8/20/23

| AIR OPERATIONS SUMMARY ICS-220 | | | | | Time Prepared | Date Prepared | Prepared By |
|---|----------|---|------------|---------------------------------------|---------------|---------------------------|---------------------------|
| Incident Name / Number | | Sunrise | Startup | Cutoff | Sunset | Operational Period - Date | Operational Period - Time |
| RIDGE / DORIS POINT / TIN SOLDIER / | | 6:37 | 7:07 | 20:11 | 20:41 | Sunday, August 20, 2023 | Staci Dickson |
| <p>Backcountry Air Traffic Freq 122.9</p> <p>General Remarks, Safety Notes, Hazards, Air Operations Special Equipment, etc.</p> <p>Maintain situational awareness when flying in low visibility conditions. Call it if the visibility falls below VFR parameters.</p> <p>Most Aircraft listed below are prepositioned in the area and may be available as needed.</p> <p>After August 15, all federal aircraft will cease tactical operations by sunset. Ferry flights allowed for 30 minutes after sunset. This is due to reduced visibility caused by topography.</p> | | | | | | | |
| Helibase Information | | TFR Information | | Rescue Ship Information | | | |
| Name Ridge | | NOTAM Ridge 3/6587 | | Name Two Bear | | Night Helist | |
| Latitude 48 27.734N | | Polygon: NM | | Phone -911 | | CMH ShortHaul | |
| Longitude 113 59.416W | | Altitude: 10000' MSL | | Make/Model Bell 429 | | Dispatch H-125 | |
| Name | | Frequency 126.8250 | | Location GPI | | S27 | |
| Latitude | | NOTAM Tin Soldier 3/7730 | | Request Procedure for These Aircraft: | | | |
| Longitude | | Altitude: 12000' MSL | | Incident Communications | | | |
| (use page 2 if needed) | | Frequency 127.2500 | | See Medical Plan For Additional Info | | | |
| | | http://tfr.faa.gov/tfr2/list.html | | | | | |
| Frequencies | | TX | Tone | RX | AM / FM | Name | Phone |
| Ridge Command | 168.0750 | (T3) 131.8 | (T3) 131.8 | 170.4250 | FM | Staci Dickson | 530-277-5153 |
| Ridge Primary A/G | 173.8375 | (T2) 123.0 | 0.0000 | 173.8375 | FM | Rita Clipperton | 530-575-9906 |
| Ridge Secondary A/G | 171.8250 | | | 171.8250 | FM | HEBM | |
| Ridge TFR | 126.8250 | | | 126.8250 | AM | Angle Beaka | 218-290-7252 |
| Ridge RW A/A | 132.1500 | | | 132.1500 | AM | Rex Sundstrom | 530-559-3370 |
| Tin Soldier Command (S) | 164.3875 | (T7) 167.9 | (T7) 167.9 | 173.1875 | FM | Ben O'Connor | 406-546-1255 |
| Tin Soldier A/G | 169.2625 | | | 169.2625 | FM | Greg Suszek | 239-877-9545 |
| Tin Soldier TFR | 127.2500 | | | 127.2500 | AM | Jay Walker Ridge | (623) 696-8532 |
| Medical A/G | 155.3400 | 156.7 (6) | | 155.3400 | FM | Matt Counts Tin Soldier | 406-270-7437 |
| AIRGUARD - Emergency Only | 168.6250 | 110.9 (1) | | 168.6250 | FM | Luke Abell | 808-345-6979 |
| HELICOPTERS (Use page 2 if Needed) | | | | | | | |
| FAA # | Type | Make/Model | Helibase | Avail | Start | Remarks | |
| 234BH | 3 | AS 350 B3 | Ridge | | 0800 | Assigned | Short Haul |
| 456TA | 2 | Bell 205A1++ | Ridge | | 1300 | Dedicated | Bucket/A |
| 624CK | 1 | S61A | GPI | | 0800 | On Loan | Tanked |
| 47KT | HLCO-319 | Bell 407 | GPI | | 0800 | Tin Soldier/A | |
| FIXED WING | | | | | | | |
| FAA # | Type | Make/Model | Base | Avail | Start | Remarks | |
| 281 | | CL-415BAE | GPI | | 900 | Scooper | |
| 282 | | CL-415BAE | GPI | | 900 | Scooper | |
| N76WA | AA-104 | AeroCndr | GPI | | 800 | Tin Soldier | |
| NOTES: Who was the first Aviator to circumnavigate the world traversing both hemispheres? How long did it take? | | | | | | | |
| UNMANNED AIRCRAFT SYSTEMS | | | | | | | |
| FAA # | Type | Make/Model | Base | Avail | Start | Remarks | |
| | | FA3LMKR939 | UR-31 | | Varies | | IR/AI |

Aviation is proof that given the will, we have the capacity to achieve the impossible' Edward Vernon Rickenbacker

Safety Message

INCIDENT: Ridge/Doris Point/ Tin Soldier

DATE: 08/21/2023 TIME: 0600-1800 Day Shift

Hazard - Driving on wet clay roads !!

- Wet clay roads can be slippery and hazardous, making it extremely difficult to steer and maintain control of your vehicle.
- Monitor the weather and relocate to hard gravel or paved surface before rain events.
- If you encounter wet clay roads, park your vehicle in a safe area and wait out the storm. The roads will quickly dry and become safe for travel.

Fight Complacency

- Stay mentally engaged on the task at hand.
- Address complacency in your daily AAR.
- Clearly identify the day's mission and purpose.
- Use the "Buddy System" and watch out for each other. If you see something, say something.
- Ask yourself: "Are you doing the job safely, the way you were trained?"
- Look for a "new" or "fresh" approach to repetitive assignments.
- Give clear briefings.

Rolling Debris

- Fire activity, wind and rain on steep slopes, or firefighters working upslope may cause rolling debris.
- Maintain situational awareness! Do not work down slope from other individuals, equipment or falling operations.
- Do not work or park vehicles below cut banks or areas prone to rolling debris. Vacate hazardous areas and return only when it is safe to do so.
- Shout warnings when you dislodge rolling debris when working on slopes.

Make a Safety Difference

- Set the example.
- Correct and/or report any unsafe actions or conditions.
- Monitor crew members and yourself for fatigue and complacency.
- Everyone is a Safety Officer and is responsible for safety.
- Challenge yourself and your crew to be the safety leaders on your Division or assignment.


Prepared by:

CIIMT 4 Safety Group



INCIDENT RISK ANALYSIS

ICS (215A) DAY SHIFT

| BR/DV | HAZARDOUS ACTIONS – CONDITIONS | MITIGATIONS – WARNINGS – REMEDIES |
|---|--|--|
| ALL | WEATHER | <ul style="list-style-type: none"> • Maintain continuous Situational Awareness based on the fire environment, observed fire behavior, hazards, and incident objectives. • Take weather throughout the shift to get timely and accurate information. • Is what we predicted what you are observing? • Request spot weather forecasts if you notice a notable change in the weather. • Communicate any weather changes with your crew and adjacent resources. • Be prepared for rainy weather conditions. |
| ALL | TRAFFIC HAZARDS AND DRIVING | <ul style="list-style-type: none"> • Use extreme caution on wet clay roads during rain events. • Take extra precautions when entering or exiting the roadways. • Maintain high visibility when in the operational area and use warning lights when working on roads or traveling in smoke. • Many roads are narrow and mid-slope, with soft shoulders. Allow heavy vehicles to pass on the uphill side. Use spotters when backing or turning around. • Be alert for wildlife. Dusk to dawn poses the greatest potential for accidents. • Be aware of and take precautions around logging truck traffic. • When traveling between Tin Soldier and Ridge Fires, include a passenger or travel in a caravan. Select safest route of travel based on fire activity. |
| ALL | HAZARD / DANGER TREES | <ul style="list-style-type: none"> • Follow Hazard Tree Safety Guidelines (IRPG p.20) • Limit the number of personnel around snags and their exposure time. • Fallers must be qualified for the trees being felled. • Be alert around hazard trees during wind events, even green trees. • The hazard zone extends a minimum of 2½ tree lengths. • Avoid parking vehicles or taking breaks under or near hazard trees. |
| DD, CCC, NNN | POINT PROTECTION | <ul style="list-style-type: none"> • Establish and maintain LCES. • Monitor fire progress, current and expected fire behavior. • Park vehicles pointing toward escape routes. • Maintain a minimum of a quarter tank of water in all engines at all times. |
| ALL | STEEP TERRAIN & ROLLING DEBRIS | <ul style="list-style-type: none"> • Maintain 8'-10' spacing when working & walking. • Do not work above any personnel. • Evaluate the necessity to send personnel into areas with limited access. |
| ALL | AVIATION OPERATIONS | <ul style="list-style-type: none"> • Conduct thorough mission assessments before starting work. Follow the guidelines in the SHO and other aviation guidelines and reference materials. • Ensure coordination and communication are in place and understood by all resources involved in the mission. • Ensure close coordination between Air Attack, air tankers, helicopters, and ground resources. |
| ALL | MOP UP | <ul style="list-style-type: none"> • Establish LCES. • Maintain 8-10 foot spacing when working with tools. • Wear proper PPE. • Use caution around stump holes. • Identify and mitigate snags and hazardous fire weakened trees. |
| ALL | FIRE BEHAVIOR | <ul style="list-style-type: none"> • Are you seeing what we have predicted? • Conduct thorough assessments before starting work. Ensure LCES is in place. • Plan & communicate your exit strategy with your crew and adjacent resources. • Provide additional briefing for new resources and maintain communications. |
| ALL | DIRECT/ INDIRECT FIRELINE CONSTRUCTION | <ul style="list-style-type: none"> • Establish and maintain LCES. • Utilize favorable locations when constructing control features; i.e. lighter fuels, natural or existing barriers, and ridgelines. • Watch out if there is unburned fuel between you and the fire. • Monitor weather conditions and fire behavior. |
| ALL | HEAVY EQUIPMENT OPERATIONS | <ul style="list-style-type: none"> • Ensure communications are established with operators. • Use hand signals if other communications are unavailable. • Maintain a 50'-100' exclusion area around equipment. • Use road guards as needed to control traffic. |
| ALL | COMMUNICATIONS | <ul style="list-style-type: none"> • Share your Situational Awareness (hazards, changes, etc.) with those who also have a need. • Answer questions and/or ask for intel when you do not know the plan. • Ensure all personnel are familiar with the incident and IA communications plans. • Ensure radios are cloned and include Ridge, IA and Tin Soldier Groups. |
| ALL | WILDLIFE | <ul style="list-style-type: none"> • High concentration of wildlife in the area. • Backhaul garbage from drop points. Do not keep food inside your tent. • Do not feed bears or other wild animals. Never approach bears or cubs. • If encountering a bear, make noise, travel in a group and keep members together. Do not surprise the bear. DO NOT RUN! |
| <p>INCIDENT NAME: Ridge/Doris Point/Tin Soldier</p> | | <p>OPERATIONAL PERIOD: 0600 – 1800 AUGUST 21, 2023 Date/Time Prepared: 08/20/2023 – 1530</p>  |



NOTICE



You're in Bear Country

- DO NOT bring food, toiletries, or scented items into your tent.
- Sleep at least 100 yards away from the kitchen/food prep area.
- Secure food attractants properly in a bear resistant bin or in a secured building.
- Stay alert and look for bear activity, especially where visibility or hearing is limited (thick vegetation, streams).
- Make noise whenever possible to avoid surprising a bear, especially where visibility or hearing is limited. The human voice is the best deterrent, be loud.
- Travel in a group and keep members together.
- Never run from a bear.
- If a bear is hanging around, alert others, and from a safe place make it leave. Yell, set off car alarms, air horns, bang pots and pans, etc.
- If you experience any type of conflict with a bear or have any questions/concerns, immediately contact Bear Specialist Justine Vallieres at (406)250-1265.



Human Resources Message
Ridge / Doris / Tin Soldier

August 21, 2023

**Our time is getting shorter...
How about our Tempers?**

Some can see the end in sight, for some it's uncertain. Some are ready to leave; some are wishing it was longer.

With the hard work and especially the changes taking place, it is easy to get on edge and "on the edge" with each other. Let's guard against that and try to help each other out.

~Take care and be safe.

A quick temper will make a fool of you soon enough.

~**Bruce Lee**



Feel free to call/text the HRSP if you have questions, concerns, or just want to chat.
Adam Alvarez – (HRSP) (707) 373-8715

Finance Message

Please use the QR code on front page of IAP to submit your time to
2023.ridge.finance@firenet.gov

Finance Phone Number: 208-867-3472

If you need assistance with electronic submission, there will be a Finance presence at briefing to assist those in need.

We now are accepting Time documents for THREE different fires:

RIDGE- P1QGT5

TIN SOLDIER-P1QGHA

DORIS POINT-P1QJ6J

Please note on CTR or Shift Ticket which fire you are working on.

Turn all time in through the firenet email above.

- FOR CTR SUBMISSION, PLEASE PUT CTR and RO# IN SUBJECT LINE OF EMAIL.
- FOR SHIFT TICKETS, PLEASE PUT ST AND RO# IN SUBJECT LINE OF EMAIL.
- IF TURNING IN FINAL CTR OR SHIFT TICKET, PLEASE ALSO PUT FINAL IN SUBJECT LINE.
- PLEASE MAKE EVERY EFFORT TO TURN IN ALL CTR's AND SHIFT TICKETS DAILY.
- PLEASE INCLUDE YOUR RESOURCE ORDER # ON ALL DOCUMENTATION SUBMITTED, INCLUDING RECEIPTS.
- AUTO RESPONSE IS SET UP TO LET YOU KNOW THAT DOCUMENTS WERE RECEIVED.
- FOR DEMOB: Finance will email the Draft OF-288 or OF-286 to employee for their review and approval. If everything is correct, Finance will reply with FINAL OF-288/OF-286.
- CONTRACTORS: Be sure to get Performance Evaluation before demobilization.

FINANCE CHECK IN:

- PLEASE ENSURE THE BELOW DOCUMENTS ARE EMAILED TO FINANCE WITH RESOURCE ORDER NUMBER NOTED:

| Agency Equipment/Crews: | Overhead: | Contract Equipment/Contract Crews: | Cooperator: |
|---|--|--|---|
| <ul style="list-style-type: none"> • Manifest • Resource Order • CTR's | <ul style="list-style-type: none"> • Resource Order • AD Hire Form (If an AD) • CTR's | <ul style="list-style-type: none"> • Agreement/Manifest • Resource Order • Shift Ticket • Inspection Forms | <ul style="list-style-type: none"> • Cooperative Agreement • Resource Order • Shift Ticket • Inspection Forms |



PUBLIC INFORMATION



FIRE INFORMATION CONTACT – Please direct any public or media inquiries to the Information Center at: **406-998-6074** (staffed from 0800-1930) or 2023.ridge@firenet.gov

Please email/text your photos to: **406-998-6074** or 2023.ridge@firenet.gov

Remember we are all an Information Officer – here is some helpful tips:

Fire Information is Everyone’s Job

Notify chain of command and incident Public Information/ Affairs Officer (PIO/PAO) if media arrives unescorted. Provide for their safety until an escort arrives.

Media Interviews:

- Develop and deliver key factual messages; anticipate tough questions.
- Give simple answers (10-20 sec.) and avoid using jargon or acronyms.
- Stick to *your* knowledge and avoid speaking for other incident personnel.
- Never speak off the record, exaggerate, or try to be cute or funny.
- Keep quiet in between questions; if you misspeak, ask to start again.
- Be personable, professional, and presentable (remove sunglasses and hat).
- Conclude with a safety or wildfire prevention message.

Social Media – PAUSE Before Posting:

- PERCEPTION – You are representing the jurisdictional agency and your home unit.
- AUTHORITY – Be aware of federal and host agency social media policies.
- UNDERSTANDING – Know the incident objectives. Never post negative, controversial, or unsafe messages to personal accounts. Ask a PIO/PAO or supervisor for clarification.
- SAFETY – Do not compromise your safety while taking photos and always wear proper PPE. Never post photos of children, inmates, investigations, or cultural sites; be sensitive to burned structures and private information.
- EXPECTATION – Share relevant content or photos with PIOs/PAOs to help tell the incident story.

IRPG – Other References (White)

101 of 120

Shower Hours

0500-1100

1400-2200

Breakfast

0530-0830

Dinner

1800-2130

JOKE OF THE WEEK:

Time flies like an arrow. Fruit flies like a banana.

LINE ORDER FORM



| ORDER # | DATE & TIME ORDERED Received from the Line | WHO PLACED ORDER DIVS, OPS, etc.... | DELIVER to (DIV, Helispot, DP, etc.) Division, Heli-Spot, Drcp Point, etc. | MODE of DEVIVERY Drive, Helo, pick-up | | | |
|--|--|--|---|--|-------------------------------|-------|--------|
| Order Received in Communications By: | | | | TIME: | | | |
| Communications Relayed/Placed the Order To: | | | | TIME: | | | |
| Order Shipped to the Line By (Name): | | | | TIME: | | | |
| ITEM# | DESCRIPTION | | | AMOUNT | | | |
| 1 | 1,000 Foot Hose Lay: Includes the following 10 lengths, 1 1/2" x 100' Hose 10 lengths, 1" x 100' Hose 10ea. 1 1/2" Gated Wyes 10ea. 1 1/2" to 1" Reducers. 10ea. 1" Nozzles. | | | | | | |
| 2 | 2,000 Foot Hose Lay: Includes the following 20 lengths, 1 1/2" x 100' Hose 20 lengths, 1" x 100' Hose. 20ea. 1 1/2" Gated Wyes. 20ea. 1 1/2" to 1" Reducers. 20ea. 1" Nozzles. | | | | | | |
| 3 | 3,000 Foot Hose Lay: Includes the following 30 lengths, 1 1/2" x 100' Hose. 30 lengths, 1" x 100' Hose. 30ea. 1 1/2" Gated Wyes. 30ea. 1 1/2" to 1" Reducers. 30ea. 1" Nozzles. | | | | | | |
| ITEM# | REQUESTED ITEM | NFES# | AMOUNT | ITEM# | REQUESTED ITEM | NFES# | AMOUNT |
| 4 | Backpack Pump, 5 gallon | 1149 | | 26 | Batteries, "AA", (package) | 0030 | |
| 5 | Foam, 5 gallon | 1145 | | 27 | Gasoline, Unleaded (gallon) | | |
| 6 | Hose, 3/4 inch, 50 ft. length | 1016 | | 28 | Oil, 2 Cycle Mix (quart) | 0341 | |
| 7 | Hose, 1 inch, 100 ft. length | 0966 | | 29 | Diesel, straight (gallon) | | |
| 8 | Hose, 1 1/2 inch, 100 ft. length | 0967 | | 30 | Oil, Bar & Chain (gallon) | 1880 | |
| 9 | Increaser, 3/4" to 1" | 2235 | | 31 | Fusees (box) | 0105 | |
| 10 | Increaser, 1" to 1 1/2" | 0416 | | 32 | Torch, Drip Torch ea. | 0241 | |
| 11 | Nozzle, Garden 3/4 inch | 0136 | | 33 | Mix, Drip Torch 3-1, 5 gal. | | |
| 12 | Nozzle, Forester, 1" | 0024 | | 34 | Flagging, Ribbon, Color/Roll | | |
| 13 | Nozzle, KK Type, 1" | 1081 | | 35 | Washcloth, Waterless | 0206 | |
| 14 | Nozzle, KK Type, 1 1/2" | 1082 | | 36 | Water, Cubi, 5 gallon ea. | 0048 | |
| 15 | Reducer, 1" to 3/4" | 0733 | | 37 | Water, Bottled, (case) | | |
| 16 | Reducer, 1 1/2" to 1" | 0010 | | 38 | Sports Drink, Gatorade (case) | | |
| 17 | Tee, Hoseline, 1"x1"x 3/4" | 1809 | | 39 | Food, MRE's (12 per Box) | 1842 | |
| 18 | Tee, Hoseline, 1"x1"x 1" | 2240 | | 40 | Pump Kit, High Pressure | 0870 | |
| 19 | Tee, Hoseline, 1 1/2" x 1 1/2" x 1" | 0230 | | 41 | Pump, High Pressure | 0148 | |
| 20 | Wye, Gated, 3/4" inch | 0904 | | 42 | Pump Kit, Light Weight | 0670 | |
| 21 | Wye, Gated, 1" | 0259 | | 43 | Sprinkler Kit | 1048 | |
| 22 | Wye, Gated, 1 1/2" | 0231 | | 44 | Pump Kit, Volume | 6041 | |
| 23 | Tank, Collapsible. Capacity Gallons? | | | 45 | Mop-Up Kit | 0772 | |
| 24 | Tank, Folding/Frame. Capacity?? | | | 46 | Fuel (gas/diesel/mix) | | |
| 25 | Wrap, Structure (roll) | 0881 | | | | | |

Date and Time Needed: _____ Point of Contact at Delivery Location: _____

OTHER / NOTES:

Incident Replacement Process

Try not to break or lose your toys but in the event... Submit your paperwork early!

This process is based on Region 1 USFS Incident Operating Guidelines

- Request for incident replacement must be documented on a 213 AND OF-289.
- Must have all required signatures.
- Submit paperwork to SPUL and COMP for review.
- ORDM will send request to expanded dispatch for S#.
- Upon approval by the Incident Business Advisor the S# will be emailed.
- EXPECT at least 48-72 hours for response!

Please note:

Replacement shall not be authorized using incident funds for loss or damage from normal wear and tear.

| | | | |
|--|---|--|--|
| PROPERTY LOSS OR DAMAGE REPORT Fire Suppression | | 1. Crew Name or No. (O#, A#, E# or C#) | 2. ID NO (Form OF-289) NOT APPLICABLE |
| | | 3. ISSUED TO <i>(List: Individual Name, Home Unit Name, Home Unit Address, Email and Telephone Numbers – Fax, Cell, Work, etc.)</i> | |
| 4. ISSUING OFFICE OR CAMP NAME <i>(Name of Incident Agency and the Incident Number)</i> | | | |
| 5. FIRE NAME | 6. FIRE NO. <i>(Fire Account Code)</i> | 7. TYPE EMPLOYEE <i>(Mark one with "X")</i> <input type="checkbox"/> Regular Govt <input type="checkbox"/> Casual Firefighter/AD <input type="checkbox"/> Other _____ | |
| 8. DESCRIPTION OF PROPERTY LOST OR DAMAGED <i>(Include Property/Serial No. if applicable. Include approximate year of or age of equipment.)</i> | | | QUANTITY |
| a. | | | |
| b. | | | |
| c. | | | |
| 9. Employee report on circumstances of loss or damaged to property listed: <i>(Be specific – date, place, division on fire; be descriptive of damage, loss, <u>HOW DID THE FIRE CAUSE THE DAMAGE</u>, etc.)</i> | | | |
| 10. SIGNATURE | | | 11. DATE |
| 12. Witness report: <i>(Be specific –date, place, division on fire; be descriptive of damage, loss, <u>HOW DID THE FIRE CAUSE THE DAMAGE</u> what did you see, etc.)</i> | | | |
| 13. SIGNATURE | | | 14. DATE |
| 15. Fire Boss or Property Control Officer comments regarding loss or damage: Do not complete this section, see next page. | | | |
| 16. SIGNATURE | 17. TITLE | 18. DATE | |

Requestor Name: _____

Resource Order#: _____

Incident Supervisor:

Comments:

Name and Position: _____

Contact Phone and Email: _____

Do Not Recommend Recommended

Signature & Date: _____

Subject Matter Expert:

Supply Ground Support Communications Computer Specialist Other: _____

Comments:

Name and Position: _____

Contact Phone and Email: _____

Do Not Recommend Recommended

Signature & Date: _____

Incident Agency Representative:

(Agency Administrator, IBA, Finance Section Chief, Admin Representative, etc.)

Decision:

Do Not Approve Approved

Approved with the following contingencies:

Comments:

Name and Title: _____ Signature & Date: _____

Contact Phone: _____

Supply Unit:

Sent to dispatch on: (date) _____

Resource Order(s) Assigned: **S**- _____

DEMOB MESSAGE

TENTATIVE RELEASE FOR 8/21/23

Ridge Fire

| | | |
|-------|--------|------------------------|
| C-7 | CRW2IA | KEYSTONE |
| C-10 | CRW1 | PLUMAS IHC |
| E-42 | ENG6 | DENNISON |
| E-56 | WTT2 | WEBER FD |
| E-57 | WTS3 | NW MONTANA REAL ESTATE |
| E-120 | ENG6 | MO MTF E611 |
| O-43 | SEC2 | EMMALYN GUZMAN |

Tin Soldier Fire

| | | |
|------|------|---------------|
| O-23 | HEQB | CORY ANDERSON |
|------|------|---------------|

TENTATIVE RELEASE FOR 8/22/23

Ridge Fire

| | | |
|-------|---------|-------------------------|
| C-8 | CRW2IA | TETON |
| C-11 | CRW1 | ALTA IHC |
| C-17 | CR2W2IA | PATRICK ENVIRONMENTAL |
| O-45 | SEC1 | JOSEPH BOGGS |
| O-57 | IMET | ROBERT HOENISCH |
| O-65 | PIO1 | MARK THIBIDEAU |
| O-74 | DRIV | KYLOR YOHN, |
| O-80 | COMT | TOWNS, MICHAEL |
| O-107 | SCKN | TURCEA, BENJAMIN DANIEL |

Tin Soldier Fire

| | | |
|------|------|--------------------|
| C-3 | CRW1 | BITTERROOT IHC |
| O-19 | DIVS | ZACHARY PARMENTIER |

DEMOB IS LOCATED AT RIVER RANCH ICP

Resources approved for release will report to the Demob Unit to receive a checkout form. The crew leader or single resource will obtain required signatures after turning in any accountable equipment or supplies, vehicle inspections if required, completing any required documentation, and closing out with the Finance Section.

Brian Talbott, DMOB
208-761-2635

2023.ridge.demob@firenet.gov

**VEHICLE INSPECTIONS:
WEED WASH:**

Located at KOA Staging
251 Halfmoon Flats Rd., West Glacier, MT

To request a flight:

**Submit your
information at least 72
hours in advance**

FLIGHT REQUEST FORM

| | |
|---------------------------|--|
| Request Order # | |
| Name as shown on photo ID | |
| Date of Birth | |
| Cell Phone | |
| Male or Female | |
| Email Address | |
| Last Work Date | |
| Flight Date | |
| Departure Airport Code | |
| Arrival Airport Code | |
| Rental Location | |
| Need ride to airport? | |



TRAINING MESSAGE

**Checking out is as important as checking in!
Do not let your hard work go undocumented.**

**Get your task book signed
&
Do not forget your incident Personal Performance
Evaluation.**

**New trainees please use the QR code below to check-in.
Any questions please feel free to call or send a text.**

Thank You,

Emil Picchi
TNSP
650.520.5102
TNSPEP@gmail.com

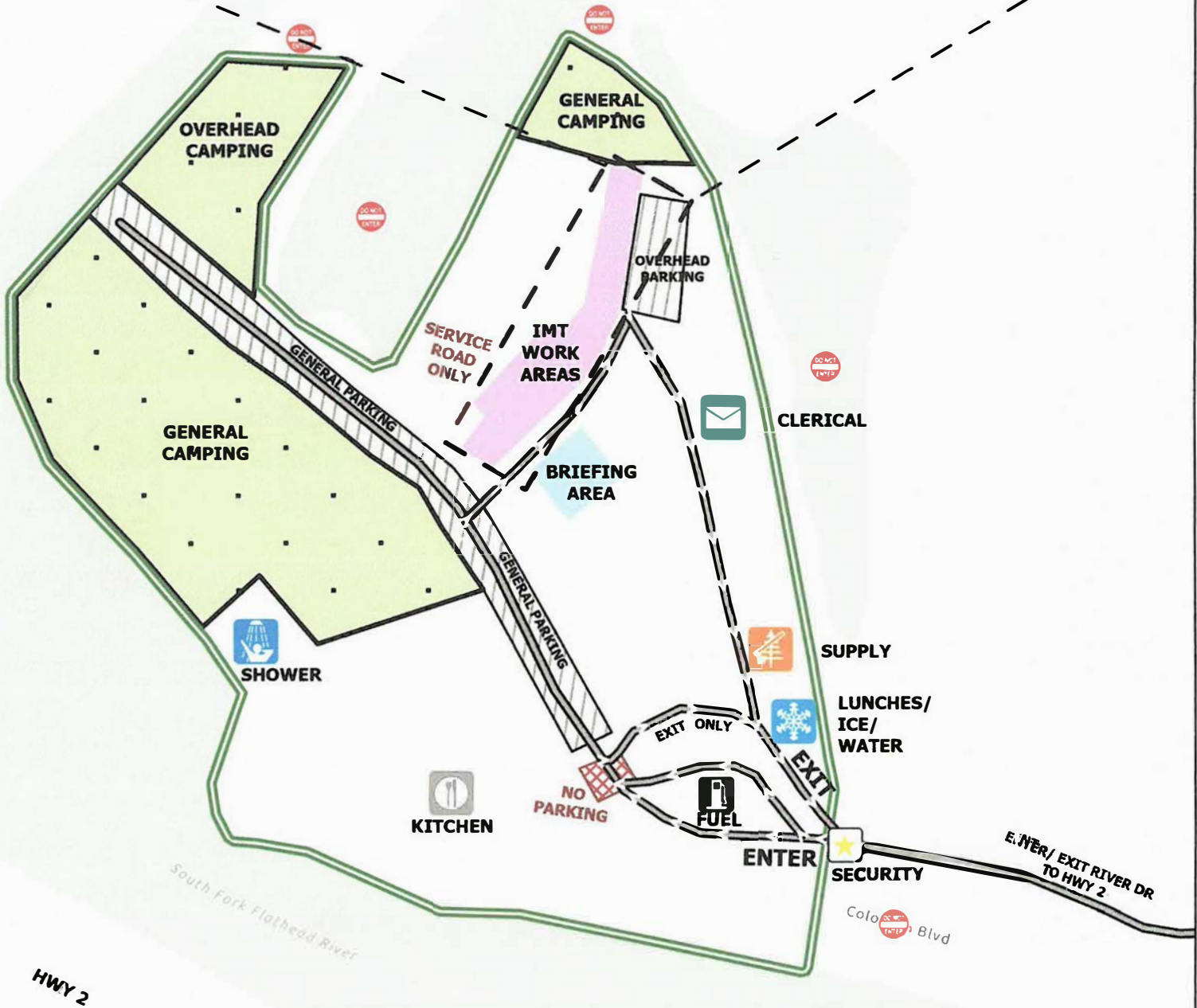
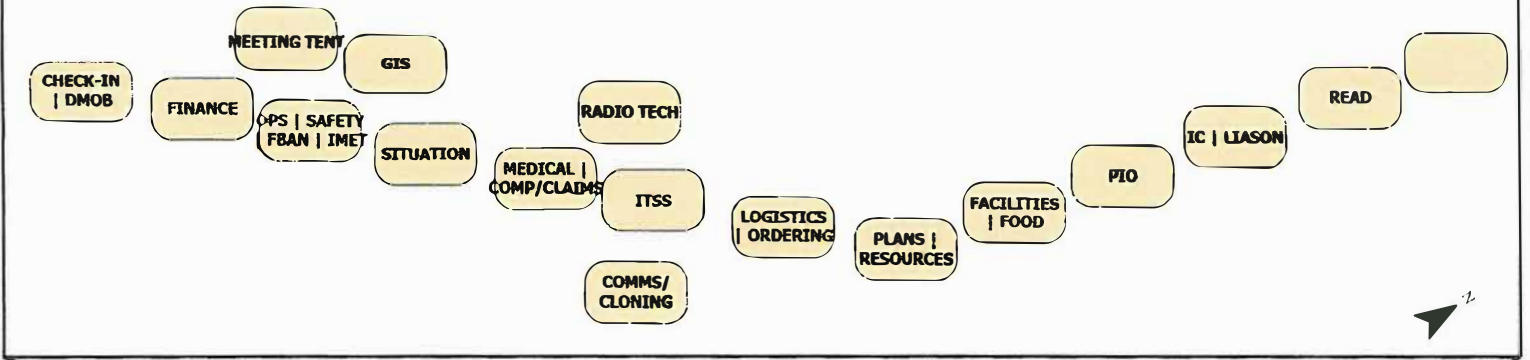
Trainee check in form



Exit Interview



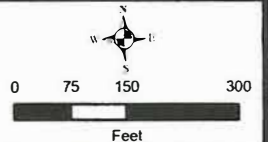
Incident Management Team Unit Locations

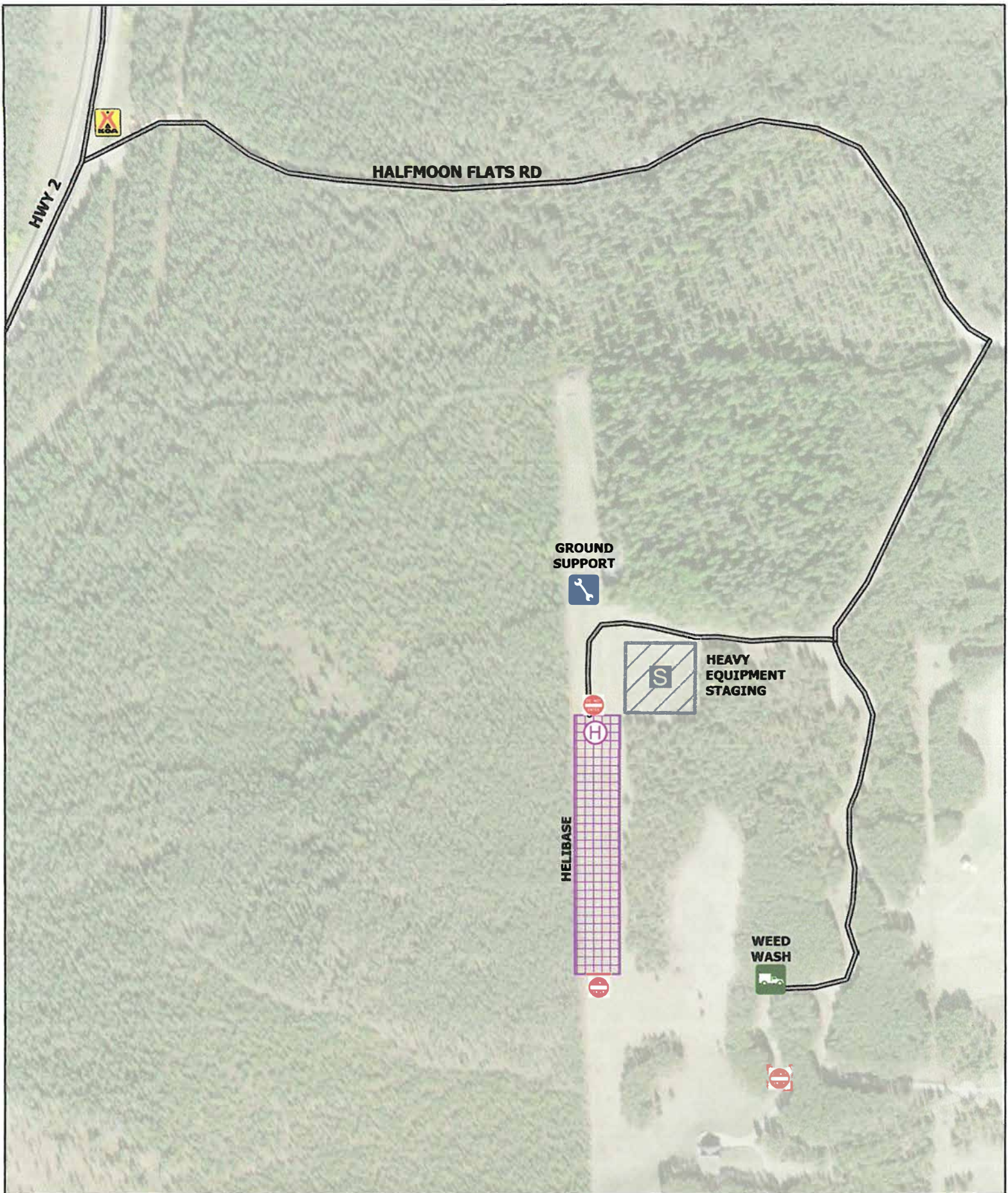


ICP MAP
Ridge
MT-FNF-000518



- | | | | |
|--------------|-------------------|-----------------|---------------|
| DO NOT ENTER | LUNCHES/ICE/WATER | IMT WORK SPACES | PARKING |
| CLERICAL | SHOWER | IMT WORK AREAS | NO PARKING |
| FUEL | SUPPLY | BRIEFING AREA | CAMPING AREAS |
| KITCHEN | SECURITY | | |





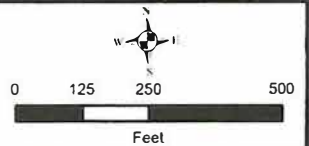
HALFMOON CAMP



Ridge

MT-FNF-000518



-  GROUND SUPPORT
-  HEAVY EQUIPMENT STAGING
-  HELIBASE
-  WEED WASH
-  DO NOT ENTER
-  HEAVY EQUIPMENT STAGING
-  HELIBASE



| | | | | | | | | | | | |
|---|--|--|---------------------|--|---------|---|--|--|--|-------------------------------------|--|
| 1. Incident Name | | | | 2. Operational Period | | | | | | | |
| Ridge, Doris Point, & Tin Soldier Medical Plan | | | | Date/Time: 8/21/2023 (0600-1800) | | | | | | | |
| 3. Medical Aid Stations / Ambulance Services / REMS | | | | | | | | | | | |
| Name | | Location | | Contact | | Advanced Life Support (ALS) Yes No | | | | | |
| Three Rivers EMS | | 31 7 th Street W, Columbia Falls, MT | | 911 OR (406)-892-4244 | | X | | | | | |
| Kalispell Fire | | Div A, DP10 | | Incident Dispatch / Communications | | X | | | | | |
| Wilderness Medics Ambulance | | Spotted Bear Ranger Office | | Incident Dispatch / Communications | | X | | | | | |
| 4. Air Rescue / Air Ambulance Services | | | | | | | | | | | |
| Name | | Location | | Type of Aircraft & Capability | | | | | | | |
| ALERT-1 | | Kalispell, MT | | Bell 407 CCT Medical Transport | | | | | | | |
| Two Bear Air Rescue | | Kalispell, MT | | Bell 429 Rescue / Hoist NVG | | | | | | | |
| 350 HQ | | Available Through Incident Dispatch | | H-125 Short-haul | | | | | | | |
| Trinity Air Ambulance | | Missoula, MT | | Learjet 35, Fixed Wing CCT Medical Transport | | | | | | | |
| 5. Hospitals (all times estimated from incident location) | | | | | | | | | | | |
| Name & Trauma Level | | GPS Datum – WGS 84 Degrees Decimal Minutes | | Travel Time (From ICP) Air Gnd | | Phone | | Helipad Yes No | | Address | |
| Logan Health Whitefish Level 4 | | Lat: N 48° 22.51' | Long: W 114° 19.56' | 7 MINS | 19 MINS | 406-863-3500 | | X | | 1600 Hospital Way, Whitefish, MT | |
| Logan Health Kalispell Level 3 | | Lat: N 48° 22.84' | Long: W 114° 19.88' | 10 MINS | 33 MINS | 406-752-5111 | | X | | 310 Sunnyview Ln, Kalispell, MT | |
| St Patrick's Med. Center Level 2 | | Lat: N 113° 59.96' | Long: W 122° 19.39' | 45 MINS | 2.5 HRS | 406-543-7271 | | X | | 500 W. Broadway Missoula, MT | |
| Harbor View Medical Regional Burn Ctr./ Level 1 | | Lat: N 47° 36.24' | Long: W 122° 19.39' | 1.5 HRS | N/A | 206-744-3140 | | X | | 50 Medical Dr. North Seattle, WA | |
| 6. Division / Crew Emergency Pre-Plan | | | | | | | | <i>Update and discuss with assigned resources daily.</i> | | | |
| Fireline EMT / Medic's Division / Branch Location | | | | | | | | | | | |
| Air Hoist site location site: Lat: / Long: / Elevation: | | | | | | | | | | | |
| Helispot: Lat: / Long: / Elevation: MED LZ: | | | | | | | | | | | |
| 7. Prepared By (Medical Unit Leader) | | | | 8. Date/Time | | 9. Reviewed By (Safety Officer) | | 10. Date/Time | | | |
| MEDL Eric Williams / Jeff Brooks / Sam Crenshaw (T)  | | | | 8/20/2023 1600 | | SOF1 Mike Albert  | | 8/20/2023 1600 | | | |

Medical Incident Report

FOR A **NON-EMERGENCY INCIDENT**: WORK THROUGH CHAIN OF COMMAND TO REPORT AND TRANSPORT INJURED PERSONNEL AS NECESSARY.

FOR A **MEDICAL EMERGENCY**: IDENTIFY ON SCENE INCIDENT COMMANDER BY NAME AND POSITION AND ANNOUNCE "MEDICAL EMERGENCY" TO INITIATE RESPONSE FROM COMMUNICATIONS

Use the following items to communicate situation to communications/dispatch.

1. CONTACT COMMUNICATIONS / DISPATCH (Verify correct frequency prior to starting report)
 Ex: "Communications, Div. Alpha. Stand-by for Emergency Traffic."

2. INCIDENT STATUS: Provide incident summary (including number of patients) and command structure.
 Ex: "Communications, I have a Red priority patient, unconscious, struck by a falling tree.
 Requesting air ambulance to Forest Road 1 at (Lat./Long.)
 "This will be the Trout Meadow Medical Incident, IC is TFLD Jones. EMT Smith is providing medical care."

| | | |
|--|---|---|
| Severity of Emergency AND Transport Priority (priority 1, 2, 3) | <input type="checkbox"/> RED / PRIORITY 1 Life or limb threatening Injury or illness. Evacuation need is IMMEDIATE Ex: Unconscious, difficulty breathing, bleeding severely, 2° - 3° burns more than 4 palm sizes, heat stroke, disoriented. <input type="checkbox"/> YELLOW / PRIORITY 2 Serious Injury or illness. Evacuation may be DELAYED if necessary. Ex: Significant trauma, unable to walk, 2° - 3° burns not more than 1-3 palm sizes. <input type="checkbox"/> GREEN / PRIORITY 3 Minor Injury or illness. Non-Emergency transport Ex: Sprains, strains, minor heat-related illness. | |
| Nature of Injury or Illness & Mechanism of Injury | | Brief Summary of Injury or Illness (Ex: Unconscious, Struck by Falling Tree) |
| Transport Request | | Air Ambulance / Short Haul/Hoist Ground Ambulance / Other |
| Patient Location | | Descriptive Location & Lat. / Long. (WGS84) |
| Incident Name | | Geographic Name + "Medical" (Ex: Trout Meadow Medical) |
| On-Scene Incident Commander | | Name of on-scene IC of Incident within an Incident (Ex: TFLD Jones) |
| Crew Patient Care | | Name of Care Provider (Ex: EMT Smith) |

3. INITIAL PATIENT ASSESSMENT: Complete this section for each patient as applicable (start with the most severe patient)

| | | | |
|--|-------------------------|---------|------------------------|
| Patient Assessment: (IRPG PAGE 106) | Age: | Weight: | Chief Complaint: |
| Skin Signs: (color/moisture/temp) | Level of Consciousness: | BP: | HR: Respirations: |
| Treatment: | | | |

4. TRANSPORT PLAN:

Evacuation Location (drop point, intersection, helispot, Lat. / Long, hazards) Patient's ETA to Location:

5. ADDITIONAL RESOURCES / EQUIPMENT NEEDS:

Paramedic / EMT - Crews - Immobilization Devices - AED - Oxygen - Trauma Bag - IV/Fluid(s) - Splints - Rope rescue - Wheeled litter - HAZMAT - Extrication

6. COMMUNICATIONS: Identify State Air/Ground EMS Frequencies and Hospital Contacts as applicable

| Function | Channel Name/Number | Receive (RX) | Tone/NAC * | Transmit (TX) | Tone/NAC * |
|-------------|---------------------|--------------|------------|---------------|------------|
| COMMAND | | | | | |
| AIR-TO-GRND | | | | | |
| TACTICAL | | | | | |

7. CONTINGENCY: Considerations: If primary options fail, what actions can be implemented in conjunction with primary evacuation method?
 Be thinking ahead.

8. ADDITIONAL INFORMATION: Updates/Changes, etc.

REMEMBER: Confirm ETA's of resources ordered. Act according to your level of training
 Be Alert - Keep Calm - Think Clearly - Act Decisively

*** Follow up with MEDL upon return to ICP ***



