

113°45'0"W 113°44'0"W 113°43'0"W 113°42'0"W 113°41'0"W 113°40'0"W 113°39'0"W

48°0'0"N

48°0'0"N

47°59'0"N

47°59'0"N

47°58'0"N

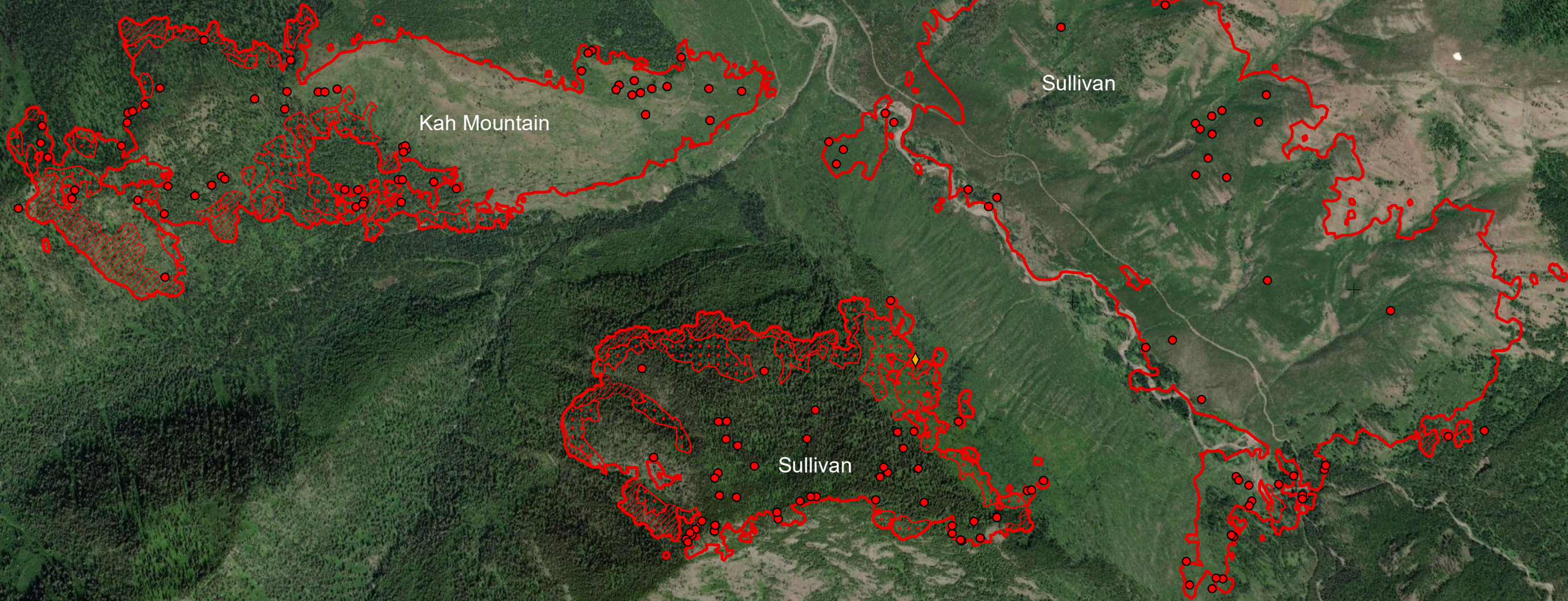
47°58'0"N






113°45'0"W 113°44'0"W 113°43'0"W 113°42'0"W 113°41'0"W 113°40'0"W 113°39'0"W



**Kah Mountain and Sullivan
Tin Soldier Complex
MT-FNF-000535
Infrared Map**

Imagery Date: 8/13/2023 @ 2315 MDT
 IRIN: Elise Bowne
 Interpreted Acres: 1257 Acres for Sullivan
 and 491 acres for Kah Mountain
 NAD83

-  Possible Heat Source
-  Isolated Heat Source
-  Scattered Heat
-  Intense Heat
-  IR Heat Perimeter

