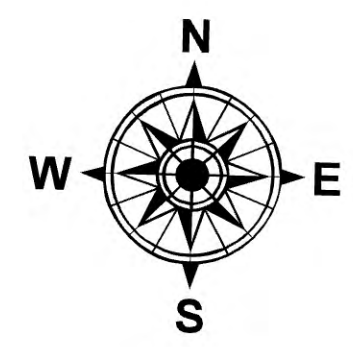
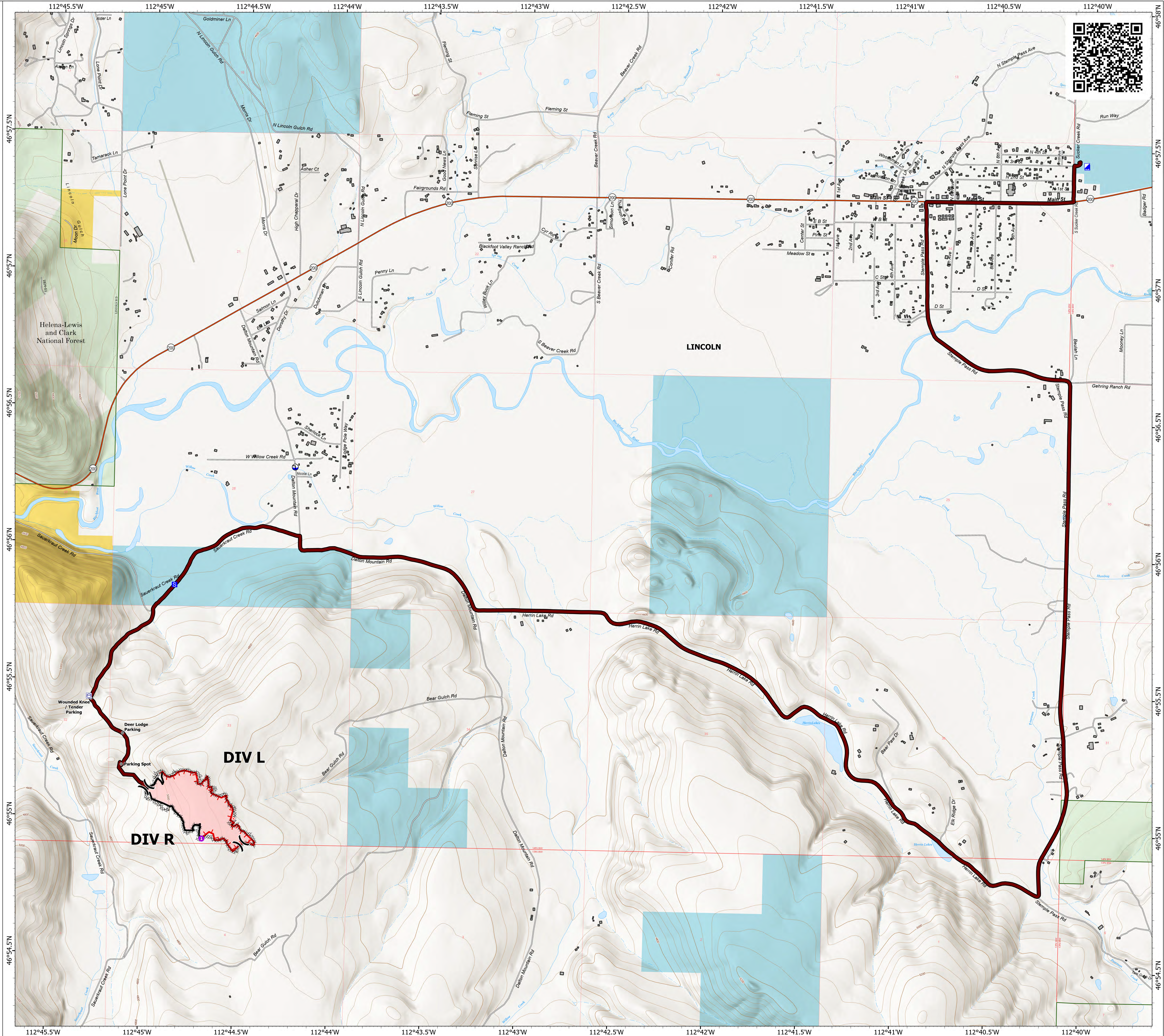


Transportation

Dalton
MT-SWS-000404
7/22/24 Day

42 acres at 7/20/24 at 1200 hrs
36% Containment

- Structure
- Dalton Fire Access Road
- Helispot
- Division Break
- Incident Command Post
- Camp
- Staging Area
- Hot Spot - Spot Fire
- Other
- Draft Site
- Completed Dozer Line
- Completed Hand Line
- Contained
- Uncontained
- Wildfire Daily Fire Perimeter
- Secondary Highway
- Road
- FS Closed Road
- Forest Service Land
- Bureau of Land Management Lands
- State Lands



0 0.5
Miles



1:8,000 | RIST 2024 | 7/21/2024 1548
Acres from GPS
North American 1983 Datum, LatLong Grid