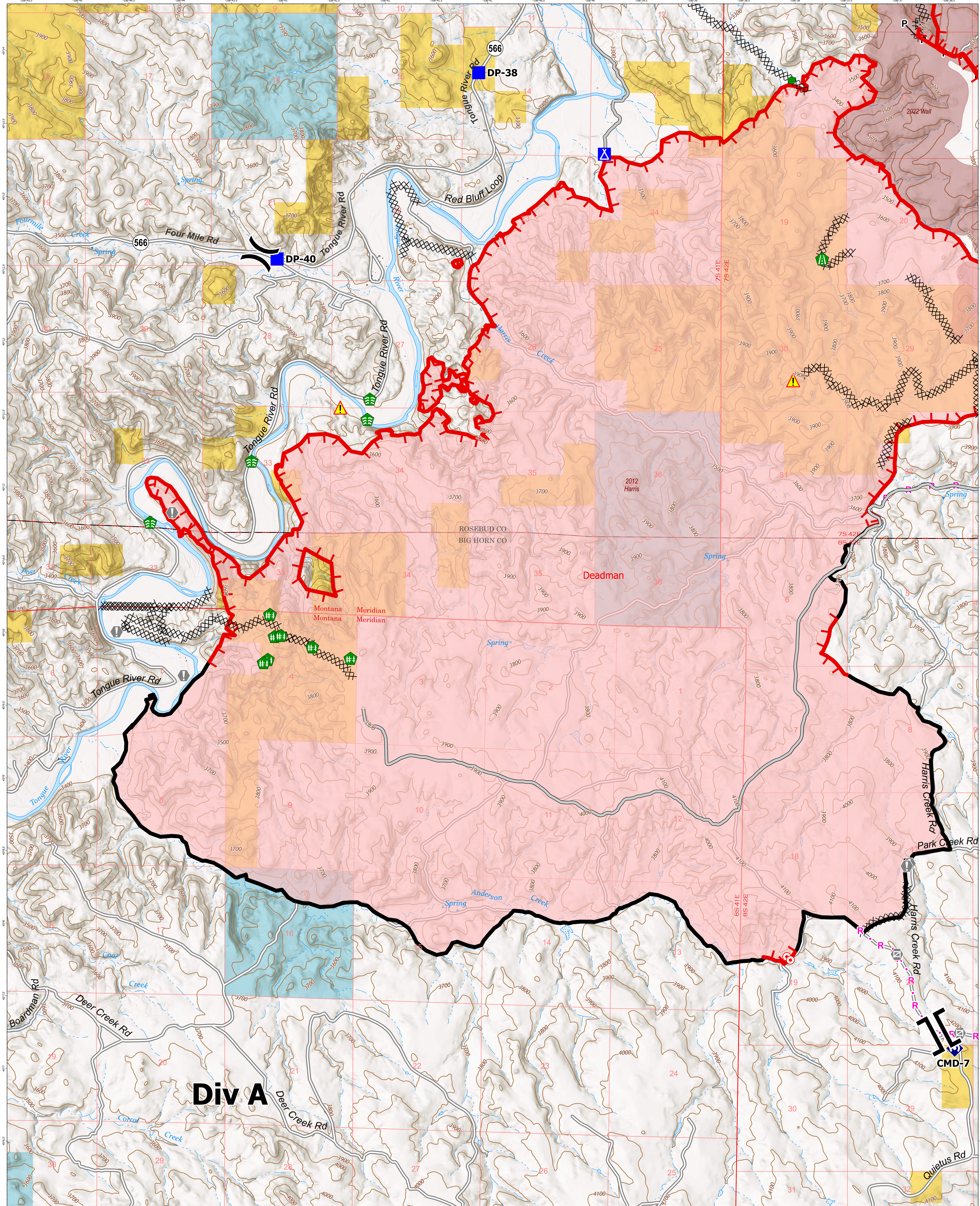


**OPERATIONS - DIV A**

**7/19/2024**



**Deadman  
MT-LG29-000236**

Fire Perimeter as of  
7/17/2024 2130 hrs  
19,130 Acres

- |   |   |
|---|---|
| <ul style="list-style-type: none"> <li>Division Break</li> <li>Branch Break</li> <li>Camp</li> <li>Hot Spot - Spot Fire</li> <li>Value at Risk</li> <li>Gate</li> <li>Stream Crossing</li> <li>Road Repair</li> <li>Repair Point</li> </ul> | <ul style="list-style-type: none"> <li>Fire Edge (Field Collector)</li> <li>Fire Edge (GPS)</li> <li>Fire Edge (LiDAR)</li> <li>Fire Edge (Satellite)</li> <li>Fire Edge (Thermal)</li> <li>Fire Edge (Thermal - Night)</li> <li>Fire Edge (Thermal - Day)</li> <li>Fire Edge (Thermal - Night - 2)</li> <li>Fire Edge (Thermal - Day - 2)</li> </ul> |
|---|---|

