



Incident Action Plan

Grouse Fire

MT-BDF-246327, P1R4SM24 (0102)

Friday, August 16, 2024

0600-2000

Safety Starts Here

Arrive Alive:

Driving is one of the most hazardous things we do because we literally perform the task hundreds of times during our daily lives and we tend to take it for granted. Based on recent accident trends, vehicle accidents are the source of more deaths and serious injuries to wildland firefighters than any other single cause. To be a safe driver you must want to be one. Take a good hard look at your driving habits.

Are you training yourself to do the right things the right way-

- Fastening your seat belt; checking your mirrors; maintaining safe following distances

Many things can lure our attention away from our driving such as: fatigue, eating and drinking, reading directions and maps, writing, cell phone and radio use, conversation within the vehicle and music.

- Drive only when you are well rested and alert and avoid driving during the hours of 10:00 PM and 6:00 AM. Take a 10-to-15-minute break after every 2 hours.
- By constantly moving your vision, checking mirrors and distant road conditions, you can avoid highway hypnosis and daydreaming.
- When talking with passengers, keep your eyes on the road and both hands on the steering wheel.
- As a passenger, stay awake and help the driver stay focused, while being another set of eyes on the road.

Before operating any vehicle, do a walk-around to look for potential problems, make sure the lights and blinkers work, and adjust your seat and mirrors.

Complete a full Preventive Maintenance (PM), on the vehicle you will operating.

Incident Commanders
Bill Waln, Phil Daniels
Jay Mickey (T)



Available at this site: Remote Incident Check-in, IAP's, Maps, Finance, Fillable-CTR's, Training, Demob, Shift Tickets and General Messages

INCIDENT OBJECTIVES	1. Incident Name GROUSE FIRE	2. Date Prepared August 15, 2024	3. Time 1400
4. Operational Period: August 16, 2024 Day Operations 0600-1800			
<p>Leaders Intent: It is the Incident Commander's expectation that we as an organization will meet the following leader's intent, as well as the incident objectives identified below:</p> <ul style="list-style-type: none"> • Ensure all incident strategies and actions reflect a commitment to public, responder, and aviation safety through use of an adaptive risk management process as outlined in the IRPG and the aviation risk assessment process. • Treat all incident personnel, cooperators, and local public with dignity and respect, and create a "no tolerance" atmosphere for harassment, alcohol, or illegal drug use. • Respect the integrity of the cultural resources in and adjacent to the incident, coordinating all operational activities with the Forest Archaeologist. <p>Incident Objectives:</p> <ul style="list-style-type: none"> • Continually provide for emergency personnel and public safety through the utilization of a deliberate, risk- informed approach, with avenues for feedback from personnel. • Use a full suppression strategy with a combination of direct, indirect, and point zone protection tactics where reasonable to protect the identified critical values of risk. • Develop contingency plans to identify management actions to be taken if the fire threatens Pioneer Scenic Byway, Jerked Prairie, and/or Highway 43. • Foster and maintain relationships with the public, cooperators, and vested parties. • Ensure coordinated, timely, and accurate release of information to the public and land managers, including the BLM and the Montana DNRC, utilizing the full suite of platforms. • Maintain fiscal accountability by making good risk-informed decisions. • Provide for a smooth transition and adjust organizational resources to meet current and forecasted tactical operations. 			
8. Attachments (X if attached)			
<input checked="" type="checkbox"/>	Cover / Safety Message	<input checked="" type="checkbox"/>	ICS 203 Organization Assignment List
	Fire Behavior Forecast	<input checked="" type="checkbox"/>	ICS 204 Division Assignment Lists
<input checked="" type="checkbox"/>	ICS 205 Incident Radio Comm Plan		Resource Advisor Message
	Human Resource Message	<input checked="" type="checkbox"/>	Finance Message
<input checked="" type="checkbox"/>	Demob List	<input checked="" type="checkbox"/>	Training Message
	NR Chainsaw Parts Order Form	<input checked="" type="checkbox"/>	ICS 206 Medical Plan
9. Prepared by PSCC PETER BARTH	9. Approved by (Incident Commander) WALN / DANIELS / MICKEY (T)		

ORGANIZATION ASSIGNMENT LIST

Incident Name		Operations Section		
<h1 style="margin: 0;">Grouse Fire</h1>		Field	Brandon "Bones" Bonenberger	
		Planning	Troy Mueller, Joe Duran (T)	
		Strategic	Rodney Redinger	
Date Prepared	Time Prepared	<h3 style="margin: 0;">Division/Group</h3>		
8/14/2024	1900			
Operational Period				
8/15/2024 0600 to 8/15/2024 2000				
Incident Commander and Staff		Alpha/Whiskey	DIVS	
Incident Commander	Bill Waln, Jay Mickey (T)	Mike	DIVS	Geoff Harrison, Alex Doud (T)
Deputy	Phil Daniels	Zulu	DIVS	Chris Rokosh, Zach Valentiner (T)
Safety Officer	Brandon Hoffman			Unstaffed
Medical Unit	Dan Leone			
Liaison Officer	Tim Flanary			
Information Officer	Cass Cairns			
Human Resource Specialist	Debby Hassel (v)			
Agency Representatives		Air Operations Branch		
BDNF	Tim Lahey, Sara Rouse (T)	Air Operation Branch Director	Matt Lingenfelter	
BLM	Lindsey Babcock, Brandy Janzen (T)	Air Support Group Supervisor		
MT-DNRC	Tim Egan	Air Tactical Group Supervisor		
Resource Advisor	Ayme Swartz	Helibase Manager	Matt Esser (T)	
		Finance Section		
		Chief	Kayla Davin	
		Time Unit	Natasha Goedert (T)	
		Cost/Comp Unit	Annette Pintado (v)	
		Comp/Claims	Arlene Tucker (T)	
Planning Section				
Chief	Peter Barth			
Resource Unit	Kellie Stover			
Situation Unit	Jodi Wetzstein			
Training Specialist	Wendy Fischer (v), Carolyn Blatz (T)	Logistics Section		
Meteorologist	Mark Loeffelbein	Chief	Darin Gehring, Jamie Rietz (T)	
Demobilization Unit	Logan Brown	Facilities Unit	Ish Ennis, Ken Hehr	
Documentation Unit	Spencer Pollock (RIST)	Ground Support Unit	Lee Walker, Marcus Woods (T)	
IT Specialist	Eric Simmons, Tyler Ward (T)	Communications Unit	Walter Warrick	
		Supply Unit	Robin Brooks	
		Food Unit	Wally Leander	
		Security	Dave Tyndell	
		Ordering	Monty Bollock (T)	

Prepared By:

Kellie Stover - RESL

Signature: _____



Grouse Weather Forecast



FORECAST NO: 7
FORECAST FOR: Fri, Aug 16, 2024 Day
FORECAST ISSUED: Aug 15, 2024, 1800 MDT

NAME OF FIRE: Grouse
UNIT: Beaverhead-Deerlodge NF
SIGNED: //s// Mark Loeffelbein - IMET

WEATHER DISCUSSION: ...There will be another chance of afternoon thunderstorms on Friday which will continue to be a trend in the weather forecast. Wind gusts up to 40 mph will be possible with any thunderstorm outflows. Expect an uptick in wind speed this afternoon even without any thunderstorms as the little trough of low pressure that brought yesterday's storms exits. Overnight RH recoveries will become worse each night through the weekend.

FORECAST FOR TODAY: Partly Cloudy (40-60%). 30% Chance of Thunderstorms.

Max Temperature(°F):

(6500 ft.) 70-75 (1-2° Cooler) **Min RH: (6500 ft.)** 28-33% (1-2% Higher)
(8500 ft.) 63-68 (1-2° Cooler) **Min RH: (8500 ft.)** 30-35% (1-2% Higher)

20 FT Winds:

Slope/Valleys: Southwest facing slopes 4-8 mph after 1200, otherwise calm becoming upslope 3-6 mph after 1200.

Wise River Drainage: Down Drainage after 1100 4-8 mph.

Ridgetops: Southwest 10-14 Gusts to 20 mph after 1200.

CWR (0.1"+): 10% **Chance of Lighting:** 30% **LAL:** 2
Inversion: Inversions breaking around 1100. **Haines:** 4 Low

OUTLOOK FOR TONIGHT: Mostly Clear (0-20%).

Min Temperature (°F):

Lower Elev. (6500 ft.) 38-43
Upper Elev. (8500 ft.) 43-48

Max RH:

Lower Elev. 60-70%
Upper Elev. 55-65%

20 FT Winds:

Slope/Valleys: Upslope 3-6 mph until 2200, then downslope 2-4 mph.

Ridgetops: Becoming less than 5 mph after 2200.

CWR (0.1"+): 0% **LAL:** 1 **Haines:** 3 Very Low

EXTENDED OUTLOOK (6500 ft.):

Saturday...Mostly Sunny (0-20%). 10% Chance of Thunderstorms. High 75-80. RH: 17-22%. Winds: South/Southwest 8 to 12 Gusts to 20 mph. Haines: 5. CWR (0.1"+): 0%

Sunday...Partly Cloudy (20-40%). 20% Chance of Thunderstorms. High 77-82. RH: 20-25%. Winds: South/Southwest 8 to 12 Gusts to 19 mph. Haines: 5. CWR (0.1"+): 0%

Monday...Partly Cloudy (40-60%). 30% Chance of Thunderstorms. High 76-81. RH: 23-28%. Winds: Southwest 8 to 12 Gusts to 19 mph. Haines: 5. CWR (0.1"+): 10%

DIVISION/GROUP ASSIGNMENTS							
Grouse Fire				Branch		Division	
						Alpha/Whiskey	
Operational Period							
8/16/24	0600	8/165/2024	2000				
Operations Personnel:							
Operations Chief (Plans)		Troy Mueller Joe Duran (T)		Division/Group Supervisor		Geoff Harrison Alex Doud (T)	
Operations Chief (Field)		Brandon "Bones" Bonenberger		Air Attack Supervisor			
Safety Officer		Brandon Hoffman		Medical Unit Leader		Dan Leone	
RO #	Item Code	Resource	LWD	Leader Name	# Person	Report Time/Place	Report Time/Place
O-143	TFLD		8/20	Rob Dunn	1	ICP/0600	ICP/2000
O-129	TFLD(T)		8/19	Donovan Suko	1	ICP/0600	ICP/2000
* O-142.62	TFLD(T)		8/17	Roy Kottwitz	1	ICP/0600	ICP/2000
O-115	WFM2	Kaniksu WFM	8/19	Sam Castaldo	9	H30/0600	H30/2000
* E-52	ENG6	MT-BDF E671	8/18	Molly Chiappetta	9	ICP/0600	ICP/2000
* E-53	ENG6	Graywolf	8/20	Trevor Scott	3	ICP/0600	ICP/2000
* E-70	ENG6	Mountain Man	8/20	Brent Leyva	3	ICP/0600	ICP/2000
O-58	EMPF	Medic 4	8/17	Becca Wallace	1	H30/0600	H30/2000
Work Assignments:							
END STATE: No threat from fire to the Values At Risk.							
PURPOSE: Hold fire within established fireline.							
TASK: Patrol and monitor fire's edge within the divisions.							
Special Instructions:							
* Denotes IA Resource							
Ambulance Fireline Medics located at ICP.							
Communication Summary							
See Communication Plan							
Prepared By:						30	
Kellie Stover - RESL				Signature: _____		Personnel	

DIVISION/GROUP ASSIGNMENTS							
Grouse Fire				Branch		Division	
				Mike			
Operational Period							
8/16/24	0600	8/165/2024	2000				
Operations Personnel:							
Operations Chief (Plans)		Troy Mueller Joe Duran (T)		Division/Group Supervisor		Chris Rokosh; Zach Valentiner (T)	
Operations Chief (Field)		Brandon "Bones" Bonenberger		Air Attack Supervisor			
Safety Officer		Brandon Hoffman		Medical Unit Leader		Dan Leone	
RO #	Item Code	Resource	LWD	Leader Name	# Person	Report Time/Place	Report Time/Place
O-133	TFLD		8/18	Ryan Hennager	1	ICP/0600	ICP/2000
O-119	HEQB		8/19	Ryan Williams	1	ICP/0600	ICP/2000
O-124	HEQB(T)		8/19	Joel Wealton	1	ICP/0600	ICP/2000
E-80	LOGL	John Jump Trucking	8/21	Ricky Zao	2	ICP/0600	ICP/2000
E-64	LOG	Akre Logging	8/20	Kirk Randolph	1	ICP/0600	ICP/2000
E-65	LOG	Akre Logging	8/20	Brandon Clary	1	ICP/0600	ICP/2000
E-66	LOG	Akre Logging	8/20	Sam Wylie	1	ICP/0600	ICP/2000
E-108	EXC2	Grizzley Timber, LLC	8/21	Carissa Jenkins	2	ICP/0600	ICP/2000
O-135	THSP		8/19	Sam Hodge	1	ICP/0600	ICP/2000
O-166	EMPF	Medic 6	8/24	Trenton Harper	1	ICP/0600	ICP/2000
Work Assignments:							
<p>END STATE: Processed logs and slash from fuels treatments are moved and relocated to designated areas away from the Pioneer Mountain Scenic Byway in accordance with local Forest's request.</p> <p>PURPOSE: To remove and reduce potential fuel loading on the fire's side of the Pioneer Mountain Scenic Byway, while preserving the natural view of the Forest for visitor's and local residents.</p> <p>TASK: Load processed logs and slash onto the appropriate transport vehicles and safely deliver the materials to the designated drop points. Processed logs to DP 50 and slash to DP 60.</p>							
Special Instructions:							
<p>Ambulance Fireline Medics located at ICP.</p> <p>Division Mike Road Guard: Kevin Albrecht</p>							
Communication Summary							
See Communication Plan							
Prepared By:						14	
Kellie Stover - RESL				Signature: _____		Personnel	

DIVISION/GROUP ASSIGNMENTS

Grouse Fire	Branch	Division
		Zulu
Operational Period		
8/16/24	0600	8/165/2024
		2000

Operations Personnel:

Operations Chief (Plans)	Troy Mueller Joe Duran (T)	Division/Group Supervisor	
Operations Chief (Field)	Brandon "Bones" Bonenberger	Air Attack Supervisor	
Safety Officer	Brandon Hoffman	Medical Unit Leader	Dan Leone

RO #	Item Code	Resource	LWD	Leader Name	# Person	Report Time/Place	Report Time/Place
------	-----------	----------	-----	-------------	----------	-------------------	-------------------

Unstaffed

Work Assignments:

Special Instructions:

Communication Summary

See Communication Plan

Prepared By: Kellie Stover - RESL	Signature:	Personnel
-----------------------------------	------------	-----------

AIR OPERATIONS SUMMARY		Prepared By:	Matt Lingenfelter	Prepared Date:	8/15/2024	Prepared Time:	15:00
1. INCIDENT NAME:		2. Operational Date:		3. Butte Sunset:		4. Butte Pumpkin:	
Grouse		August 16, 2024		20:37		21:07	
5. Medevac Aircraft: Order through dispatch		6. TFRs:					
Life Flight ALS KBTM 800-232-0911		4/9355 Grouse 12500' MSL 120.100					
4MA Litter Capable WR Helibase							
2HX Litter Capable Butte Helibase							
8MG CMH Short Haul MSO							
Offer constructive feedback to pilots during tactical operations Status current at time of report. Changes occur constantly.							
7. Personnel:		8. Frequencies:		9. Fixed-Wing GACC:		10. Air Tankers/SEATS: Order through dispatch	
FAO	Bert Smith	Phone #	406-660-7371	AM	168.6500 Rx/Tx Tn 110.9	Lead Plane/ASM: Order through dispatch	
HEBM (T)	Matt Esser		605-517-1505		168.5250	Air Attack: Order through dispatch	
Dillon Dispatch	Aircraft Desk		406-683-3939	120.100	169.8125	Helicopters GACC: Order through dispatch	
					166.9000	T1 Avail GACC Lend/Lease	
					166.6875	SMJK GACC: Order through dispatch	
4MA	Chris Hall		406-925-3289	119.625			
2HX	Josh Quinn		352-933-1613	134.150	155.340 Tx Tn 156.7		
					155.280 Tx Tn 156.7		
					151.2200		
					151.4000		
HELICOPTERS/UAS							
FAA N#	Call Sign	Make/Model	Type	Base	Available	Remarks	
N144MA	4MA	Bell 407HP	3	WRHB	830	Committed Forest IA	
N52HX	2HX	Bell 429	3	KBTM	830	Grouse	
Notes/Remarks							
Flight follow through appropriate dispatch until contact has been made on the incident. Then flight follow local.							
Cost Summaries to matthew.esser@usda.gov/buttehb24@gmail.com							

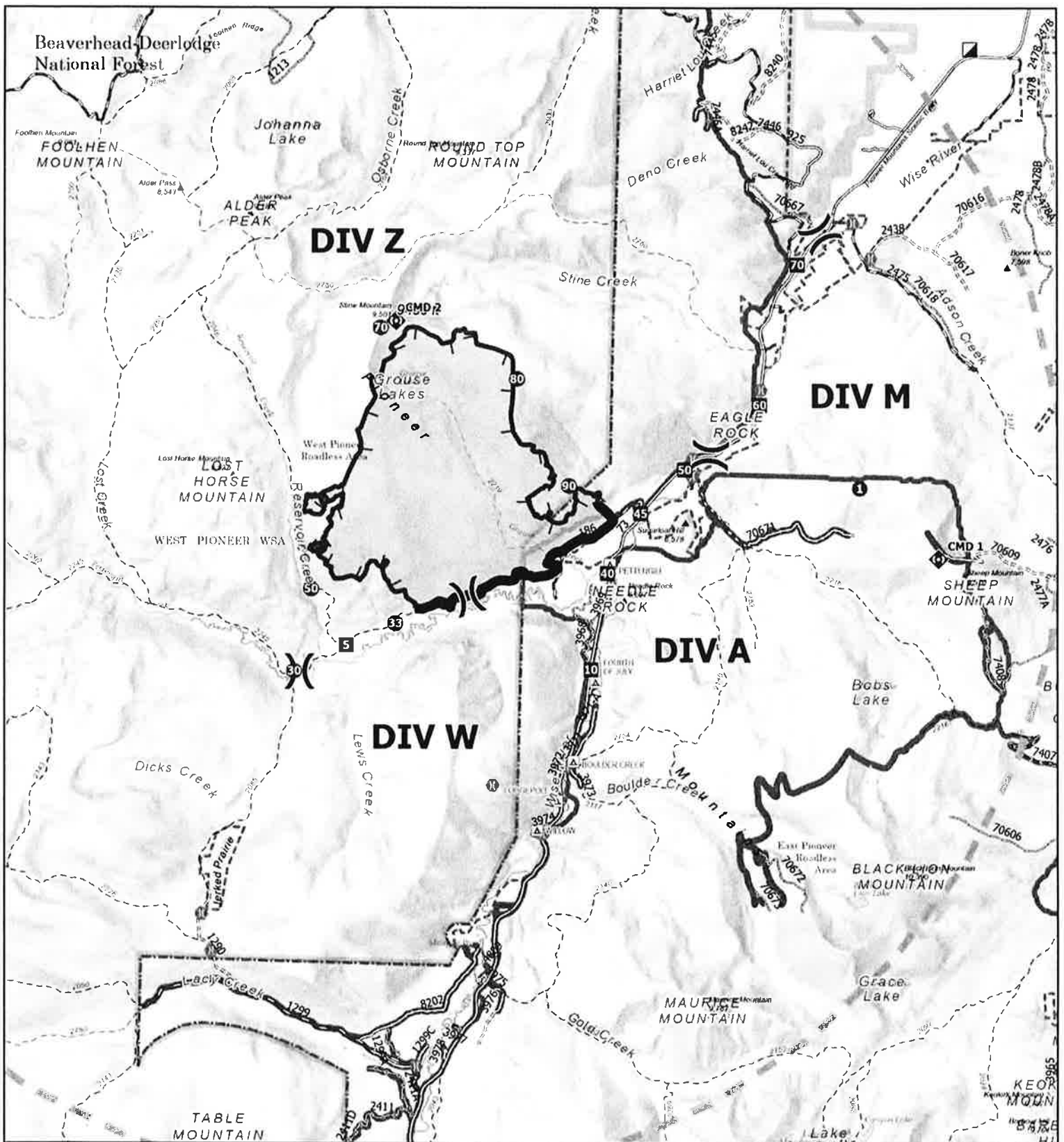
CONTROLLED UNCLASSIFIED INFORMATION//BASIC (CUI)

INCIDENT RADIO COMMUNICATIONS PLAN		1. INCIDENT NAME		2. DATE/TIME PREPARED		3. OPERATIONAL PERIOD DATE/TIME		
ICS-205		Grouse Fire		08-15-2024 1500		08-16-2024 0600-2000		
4. BASIC RADIO CHANNEL UTILIZATION								
Ch #	Channel Name	Assignment	RX Frequency	RX Tone/NAC	TX Frequency	TX Tone/NAC	Mode Digital (D) Analog (A)	Remarks
1	GMD1		170.0000	162.2	166.6750	162.2	A	Removed
2	GMD2		170.6875	162.2	166.5750	162.2	A	Removed
3	FS RPT		173.0875	167.9	165.7250	167.9	A	Odell FS Repeater
4	FS DIR		173.0875	0.000	173.0875	123.0	A	Big Hole Direct
5	VPOND PK	Dillon Dispatch	173.0875	0.000	165.7250	103.5	A	FS Vipond Park CMD
6	R1SOARPT	Tactical RPT	173.1875	136.5	164.3875	136.5	A	FS Scene Of Action (SOA)CMD
7	TAC7	DIV A / W / S	168.0500	162.2	168.0500	162.2	A	Division A / S / W / IA
8	TAC8	DIV M	168.2000	162.2	168.2000	162.2	A	Division M
9	TAC9	Not Assigned	168.6000	162.2	168.6000	162.2	A	Not Assigned
10	TAC10	DIV Z	166.7250	162.2	166.7250	162.2	A	Division Z
11	TAC11	Not Assigned	166.7750	162.2	166.7750	162.2	A	Not Assigned
12	TAC12	Unassigned	168.2500	162.2	168.2500	162.2	A	
13	VMED28	Medical	155.3400	0.000	155.3400	156.7	A	Medical/Ambulance
14	A/G PRI	Air to Ground Pri	168.5250	0.000	168.5250	0.000	A	Primary Air to Ground
15	A/G SEC	Air to Ground Sec	169.8125	0.000	169.8125	0.000	A	Secondary Air to Ground
16	AIRGUARD	EMERGENCY USE ONLY	168.6250	0.000	168.6250	110.9	A	EMERGENCY USE ONLY
ICS-205		Walter Warrick	Current Clone Version: 080924					ALWAYS POST A HUMAN REPEATER TO RELAY MESSAGES OUT OF AREAS WHERE YOU HAVE INADEQUATE COMMUNICATIONS
Prepared By:		COML	DPH/GPH: Press & Hold # Key to Check Version					
			P-150/S/KNG/BKR: Look at Zone Label for Version					

COMMUNICATIONS UNIT 24 hr phone:

208-891-8019

CONTROLLED UNCLASSIFIED INFORMATION//BASIC (CUI)



IAP

Grouse
 MT-BDF-246327
 08/16/2024 Day

4,166 acres at 08/12/2024 @ 2301 MDT

0 0.25 0.5 1 1.5 2

Miles

1:100,000 | RM CINT 3 | 8/15/2024 17:11
 Acres based on
 North American 1983 Datum



- | | |
|-------------------------------|-----------------------------------|
| Wildfire Daily Fire Perimeter | Repeater |
| Contained | Trail |
| Uncontained | National Designated Trail |
| Temporary Flight Restriction | USFS Roadless Areas |
| Helispot | FS Wilderness Study Area Boundary |
| Division Break | Forest Service Land |
| Incident Command Post | Bureau of Land Management Lands |
| Drop Point | |



Current Maps

\$\$\$ GROUSE FINANCE PROCEDURES \$\$\$

Finance Email: 2024.grouse.finance@firenet.gov

Submitting Time: Please email completed CTRs and/or Shift Tickets signed by immediate supervisor **every 2 days, after submitting travel time**. Include Resource Order Number in the subject line.

- Electronic CTRs and Shift Tickets are available through the QR code on the IAP cover.
- A **legible photo** is acceptable.

**** All time must include required justifications for hazard pay, compensable meal breaks, or excess hours. Don't forget name, RO# and date. Include a valid phone # and email.**

Finance demob: Please **Email** Finance to notify them that you are demobing.

- Provide email and phone number on **final** CTR and/or Shift Ticket.
- Email electronic copies of your final CTRs and Shift Tickets, including travel time. Include in the email they are final documents for the incident.
- Finance will email final time documents (including OF-288/286) electronically for review and signatures.

Medical

Please work directly with the **Medical Unit Leader**. The MEDL will work with Finance to ensure forms are available and completed.

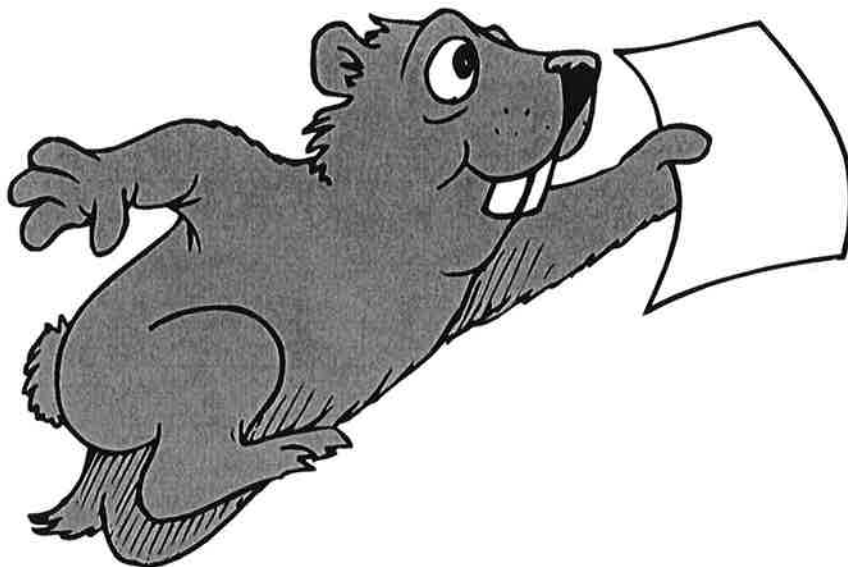
Damages or Claims

Do not wait until day of demob. An electronic OF-289, *Property Loss or Damage Report*, is available through the QR Code on the IAP cover. Contact Comp/Claims (or FSC) with questions. Include witness statements, signatures and **your contact info**.

Training Specialist Message

Trainers and Trainees
Avoid the Rush!!!

Come by and Complete Your
Paperwork
Today!!!



Wendy Fischer
Training Specialist
970-759-9610
wendy_fischer@firenet.gov

Carolyn Blatz
Training Specialist (T)
573-778-2810
carolyn_blatz@firenet.gov

DEMOB TIPS

Airline Flights

Contact DEMOB early to arrange your flight home. It can take up to 72 hours to process.

Weedwash

All vehicles that leave paved roads must go through weedwash located at the junction of highways 43 and 73 at the H-J.

Crew Swaps & Extensions

All crew swaps and extension requests must be initiated through your fire supervisor at least 72 hours prior to your scheduled demobilization and submitted through your respective section chief.

Demob Steps

1. Return all supplies, radios, etc. that were checked out.
2. Submit time for all personnel and equipment to finance.
3. All vehicles that have been to the fireline must go through a car/weed wash.
4. Receive a copy of your OF-288 and/or other financial documentation from Finance.
5. Complete the Demob Checkout Sheet using the QR Code located on the IAP
6. Once you submit the Demob Checkout Sheet you are released and may travel home.

Contact Demob

If you have demob, airline, flight, extensions, or crew swap questions you can contact demob at 605.381.2521 or 2024.grouse.demob@firenet.gov

Safe Travels!

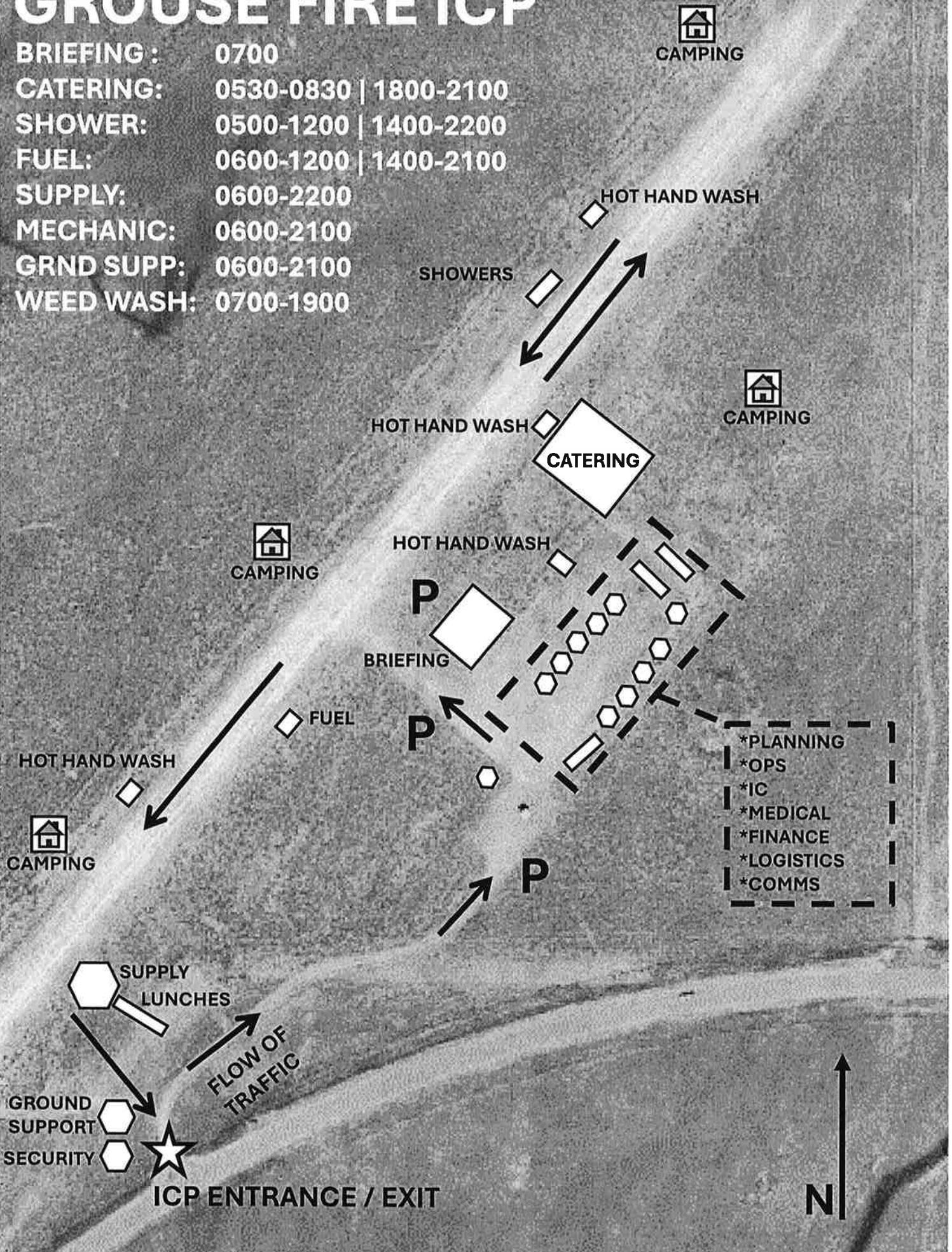
DEMOB LIST

DEMOB 8/16/2024

Request #	Item Code	Resource Name
A-20.5	UASP	SMITH, MATTHEW G
C-14	CRWC	ANACONDA - CREW #1 - MOB #1 - CRWC
E-3	AMB2	FIRELINE MEDICS LLC *END OF SHIFT
E-26	GWT3	BROWN SEPTIC, INC - 503082
E-27	REF1	THERMO KING
E-30.2	DRIV	DICK, JAMES DANIEL
E-31	WEED	OUTBACK FIREFIGHTING - LIC#A373 – WEED *END OF SHIFT
E-41	STMH	4X4 FIRE SERVICES LLC - MECH 2 *END OF SHIFT
E-66	LOG	AKRE LOGGING LLC *END OF SHIFT
E-67	LOGL	AKRE LOGGING LLC
E-80	LOGL	JOHN JUMP TRUCKING *END OF SHIFT
O-58	EMPF	WALLACE, REBECCA M
O-59	EMPF	BAKER, JOHN
O-75	SECM	ARNOLD, LARRY KEVIN
O-107	THSP	JENNINGS, JENNIE FAYE
O-118	GSUL	WOODS, MARCUS ALAN ISAIAH
O-119	HEQB	WILLIAMS, RYAN J *END OF SHIFT
O-124	HEQB	WEALTON, JOEL JAMES *END OF SHIFT
O-144	TFLD	HERICKS, CHRIS
O-185	HEWB	DURHAM, JACOB H
REMAINING ROCKY MOUNTAIN CIMT TEAM 3 MEMBERS		

GROUSE FIRE ICP

BRIEFING : 0700
CATERING: 0530-0830 | 1800-2100
SHOWER: 0500-1200 | 1400-2200
FUEL: 0600-1200 | 1400-2100
SUPPLY: 0600-2200
MECHANIC: 0600-2100
GRND SUPP: 0600-2100
WEED WASH: 0700-1900





Medical Plan (206 WF)

ROCKY MOUNTAIN INCIDENT MANAGEMENT

1. Incident / Project Name		2. Operational Period				
Grouse Fire		Date/Time: 8/16/2024 0600-1800				
3. Ambulance Services						
Name	Address	Phone and Emergency Frequency		Advanced Life Support (ALS)		
				YES	NO	
A1 Ambulance	Butte, MT	406-490-3130		X (most of the time)		
Anaconda Fire (can rendezvous at HWY 569/HWY 43)	Anaconda, MT	406-463-2164		X		
4. Air Ambulance Services						
Name	Phone	Type of Aircraft & Capability				
Lifelight	800-232-0911 Order through Dillon Interagency Dispatch Center	ALS with critical care Night Vision (will fly at night)				
Air Idaho Rescue (Air Methods) Air 4	877-818-5553 Order through Dillon Interagency Dispatch Center	ALS with critical care Night Vision (will fly at night)				
4MA Forest IA	Order through Dillon Interagency Dispatch Center	Bell 407 HP Litter Capable (will NOT fly at night)				
2HX Grouse Fire	Order through Dillon Interagency Dispatch Center	Bell 429 (will NOT fly at night)				
5. Hospitals ***** TRAVEL TIME FROM ICP *****						
Name Complete Address	LAT: DD° MM.MMM'N LONG: DD° MM.MMM'W	Travel Time From ICP		Phone	Helipad Yes /No	Level of Care
		Air	Ground			
St Vincent Regional 1233 N 30th St Billings, MT	Lat: 45° 47.658' N Long: 108° 31.003' W	1 hr	4 hrs	406-657-7000	YES	Level 1 Trauma Cardiac & Cath Lab Stroke Center
St Patrick Hospital 500 W Broadway St Missoula, MT	Lat: 46° 52.533' N Long: 114° 0.001' W	45 min	2.25 hrs	406-543-7271	YES	Level 2 Trauma Cardiac & Cath Lab Stroke Center
St James Healthcare 400 S Clark St Butte, MT	Lat: 46° 0.512' N Long: 112° 32.742' W	35 min	45 min	406-723-2585	YES	Level 3 Trauma Cardiac Certified Stroke Certified
Barrett Hospital 600 HWY 91 S Dillon, MT 59725	Lat: 45° 12.097' N Long: 112° 38.839' W	40 min	1 hr	406-683-3000	YES	Level 4
Community Hosp of Anaconda 401 W PennsylvaniaST Anaconda, MT	Lat: 46° 7.950' N Long: 112° 57.427' W	35 min	50 min	406-563-8500	YES	Local Emergency Room Only
*Travel times are from Grouse Fire ICP to the facility and DO NOT include response time to the incident.						
6. Division Branch Group						
ALPHA / WHISKEY	EMS Responders & Capabilities:	O-58 MEDIC 4 - Becca Wallace (Spiked with Kaniksu Mod)				
	Equipment Available on Scene:	4x4, ALS Kit				
	Medical Emergency Channel:	CH 5 VPOND Dillon Disptach		A/G: VMED 28		
MIKE	EMS Responders & Capabilities:	O-166 MEDIC 6 - Trenton Harper				
	Equipment Available on Scene:	4x4, ALS Kit				
	Medical Emergency Channel:	CH 5 VPOND Dillon Disptach		A/G: VMED 28		
ZULU	EMS Responders & Capabilities:	UNSTAFFED				
	Equipment Available on Scene:					
	Medical Emergency Channel:	CH 5 VPOND Dillon Disptach		A/G: VMED 28		
8. Prepared by: (Medical Unit Leader)		Date	Reviewed by: (Safety Officer)		Date	
/s/ Dan Leone MEDL		8/15/2024	/s/ Brandon Hoffman SOFC		8/15/2024	

MEDICAL PLAN (ICS 206 WF)

Controlled Unclassified Information//Basic

Medical Incident Report

FOR A NON-EMERGENCY INCIDENT, WORK THROUGH CHAIN OF COMMAND TO REPORT AND TRANSPORT INJURED PERSONNEL AS NECESSARY.

FOR A MEDICAL EMERGENCY: IDENTIFY ON SCENE INCIDENT COMMANDER BY NAME AND POSITION AND ANNOUNCE "MEDICAL EMERGENCY" TO INITIATE RESPONSE FROM IMT COMMUNICATIONS/DISPATCH.

Use the following items to communicate situation to communications/dispatch.

1. CONTACT COMMUNICATIONS / DISPATCH (Verify correct frequency prior to starting report)

Ex: "Communications, Div. Alpha. Stand-by for Emergency Traffic."

2. INCIDENT STATUS: Provide incident summary (including number of patients) and command structure.

Ex: "Communications, I have a Red priority patient, unconscious, struck by a falling tree. Requesting air ambulance to Forest Road 1 at (Lat./Long.) This will be the Trout Meadow Medical, IC is TFLD Jones. EMT Smith is providing medical care."

Severity of Emergency / Transport Priority	<input type="checkbox"/> RED / PRIORITY 1 Life or limb threatening injury or illness. Evacuation need is IMMEDIATE <i>Ex: Unconscious, difficulty breathing, bleeding severely, 2^o – 3^o burns more than 4 palm sizes, heat stroke, disoriented.</i> <input type="checkbox"/> YELLOW / PRIORITY 2 Serious Injury or illness. Evacuation may be DELAYED if necessary. <i>Ex: Significant trauma, unable to walk, 2^o – 3^o burns not more than 1-3 palm sizes.</i> <input type="checkbox"/> GREEN / PRIORITY 3 Minor Injury or illness. Non-Emergency transport <i>Ex: Sprains, strains, minor heat-related illness.</i>	
Nature of Injury or Illness & Mechanism of Injury		<i>Brief Summary of Injury or Illness (Ex: Unconscious, Struck by Falling Tree)</i>
Transport Request		<i>Air Ambulance / Short Haul/Hoist Ground Ambulance / Other</i>
Patient Location		<i>Descriptive Location & Lat. / Long. (WGS84)</i>
Incident Name		<i>Geographic Name + "Medical" (Ex: Trout Meadow Medical)</i>
On-Scene Incident Commander		<i>Name of on-scene IC of Incident within an Incident (Ex: TFLD Jones)</i>
Patient Care		<i>Name of Care Provider (Ex: EMT Smith)</i>

3. INITIAL PATIENT ASSESSMENT: Complete this section for each patient as applicable (start with the most severe patient)

Patient Assessment: See IRPG page 106

Treatment:

4. TRANSPORT PLAN:

Evacuation Location (if different): (Descriptive Location (drop point, intersection, etc.) or Lat. / Long.) Patient's ETA to Evacuation Location:

Helispot / Extraction Site Size and Hazards:

5. ADDITIONAL RESOURCES / EQUIPMENT NEEDS:

Example: Paramedic/EMT, Crews, Immobilization Devices, AED, Oxygen, Trauma Bag, IV/Fluid(s), Splints, Rope rescue, Wheeled litter, HAZMAT, Extrication

6. COMMUNICATIONS: Identify State Air/Ground EMS Frequencies and Hospital Contacts as applicable

Function	Channel Name/Number	Receive (RX)	Tone/NAC *	Transmit (TX)	Tone/NAC *
COMMAND					
AIR-TO-GRND					
TACTICAL					

7. CONTINGENCY: Considerations: If primary options fail, what actions can be implemented in conjunction with primary evacuation method? Be thinking ahead.

8. ADDITIONAL INFORMATION: Updates/Changes, etc.

REMEMBER: Confirm ETA's of resources ordered. Act according to your level of training. Be Alert. Keep Calm. Think Clearly. Act Decisively.