



Grouse Fire

MT-BDF-246327, P1R4SM24 (0102)

Friday, August 9, 2024

0600-2000

Safety Starts Here

Team Transition

Welcome to Rocky Mountain Team 3. We recognize that as we all join together as a team on the Grouse fire that we will go through some changes. This is always a critical time in the progression of an incident. We will work together to make this as smooth as possible but need to recognize that this period can be a watch out situation. Some of the things we can expect over the coming days are:

- A new group of faces in positions. Please take the time to download appropriate information.
- New communications plan. Yes, a new clone is coming over the next couple days with fire designated frequencies.
- New camp layout. Even though it will be minor, some changes will be introduced as we expand.
- A new IWI plan will come with the communications plan.

Please maintain your LCES and reach out with any questions, comments, and concerns. Remember we all have the responsibility to be a safety officer!

Incident Commanders
Bill Waln, Phil Daniels
Jay Mickey (T)

Available at this site: Remote Incident Check-in, IAP's, Maps, Finance, Fillable-CTR's, Training, Demob, Shift Tickets and General Messages

Please also help us celebrate today the 80th Birthday of Smokey Bear! On August 9th 1944 the legend was Born. Happy Birthday Smokey!



INCIDENT OBJECTIVES		1. Incident Name GROUSE FIRE	2. Date Prepared August 8, 2024	3. Time 1400
4. Operational Period: August 9, 2024 Day Operations 0600-2000				
<p>Leaders Intent</p> <ul style="list-style-type: none"> Risk management tools will be used to evaluate planned actions to provide an acceptable level of risk vs. reward between the risk to critical values and risk to responders. <p>Incident Objectives</p> <ul style="list-style-type: none"> Address the safety of firefighters, aviation and public through clear communication towards completion of objectives. Use a full suppression strategy with a combination of direct, indirect, and point zone protection tactics where reasonable to protect the identified critical values at risk. Develop contingency plans that identify locations and specific actions to be taken in the event the fire threatens or moves significantly towards the Pioneer Scenic By-way, Jerked Prairie, or Hwy 43. Coordinate with the Forest Archaeologist regarding cultural resources within the vicinity of the incident. Continue to ensure timely and accurate information is provided to the public including the DNRC, BLM, partners and stakeholders impacted by the fire regarding closure areas and other ongoing activities related to the Grouse Fire. 				
8. Attachments (X if attached)				
<input checked="" type="checkbox"/>	ICS 203	<input checked="" type="checkbox"/>	ICS 205 Incident Radio Comm Plan	Division Supply Order Form
<input checked="" type="checkbox"/>	Incident Weather Forecast		Fire Information Message	NR Chainsaw Parts Order Form
	Fire Behavior Forecast	<input checked="" type="checkbox"/>	Resource Advisor Message	<input checked="" type="checkbox"/> Incident Map
<input checked="" type="checkbox"/>	Safety Message		Human Resource	<input checked="" type="checkbox"/> ICS 206 Medical Plan
<input checked="" type="checkbox"/>	ICS 204 Division Assignment Lists	<input checked="" type="checkbox"/>	Training Message	<input checked="" type="checkbox"/> ICS 214 Activity Log
<input checked="" type="checkbox"/>	ICS 220 Air Operations Summary	<input checked="" type="checkbox"/>	Finance Message	<input checked="" type="checkbox"/> Medical Incident Report – 8 Line
9. Prepared by PSCC PETER BARTH <i>PJB</i>			9. Approved by (Incident Commander) WALN/DANIELS/MICKEY (T) <i>WALN</i>	

ORGANIZATION ASSIGNMENT LIST

Incident Name		Operations Section		
Grouse Fire		Field	Brandon "Bones" Bonenberger, Ryan Sharpe (T)	
		Planning	Troy Mueller, Joe Duran (T)	
Date Prepared	Time Prepared	Strategic	Rodney Redinger	
8/8/2024	1900	Division/Group		
Operational Period				
8/9/2024 0600 to 8/9/2024 2000				
Incident Commander and Staff		Alpha	DIVS	Blake Stewart, Bela Harrington (T)
Incident Commander	Bill Waln, Jay Mickey (T)	Mike	DIVS	Chris Rokosh, Zach Valentiner (T)
Deputy	Phil Daniels	Whiskey	DIVS	Geoff Harrison, Alex Doud (T)
Safety Officer	Alison Robb, Jason Miller	Zulu	DIVS	
		Structure	Group	Joe Tjaden
Medical Unit	Joel Simonson, Dan Leone, Kristina Bastian (T)	Staging	Group	
Information Officer	Cass Cairns, Kathryn Abrahamson (T), Cindy Howard, Lynn Lockwood			
Liaison Officer	Tim Flanary, Cari Zorno			
Agency Representatives		Air Operations Branch		
BDNF	Tim Lahey, Carol Hatfield (T)	Air Operation Branch Director	Matt Lingenfelter	
BLM	Lindsay Babcock	Air Support Group Supervisor		
MT-DNRC	Tim Egan	Air Tactical Group Supervisor		
		Helibase Manager		
		Finance Section		
		Chief	Mavis Biastoch	
		Time Unit	Kayla Davin, Natasha Goedert (T)	
		Cost Unit	Annette Pintado (v)	
		Comp/Claims	Arlene Tucker (T)	
Planning Section				
Chief	Peter Barth, Devin Haynie (T), Kurt Wetzstein (PSC3)			
Resource Unit	Max Forgensi, Rick Lancaster			
Training Specialist	Wendy Fisher, Carolyn Blatz (T)	Logistics Section		
Fire Behavior		Chief	Darin Gehring, Randy Spiering, Jamie Rietz (T)	
Meteorologist				
Demobilization Unit	Dave Farmer, Logan Brown	Facilities Unit	Ish Ennis, Ken Hehr, Paul Kimpling	
Check In	Carla Rumsey	Ground Support Unit	Lee Walker, Jamie Rietz	
Documentation Unit	Spencer Pollock (RIST)	Communications Unit	Walter Warrick	
Resource Advisor	Ayme Swartz	Supply Unit	Robin Brooks	
Long Term Analyst	Erin Noonan	Food Unit	Wally Leander	
GIS Specialists	Sarlyn McCormick, Chris "Fern" Ferner, Emma Vakili	Security	Dave Tyndell	
IT Specialist	Eric Simmons, Tyler Ward (T)	Ordering	Beth Youngstrom, Monty Bollock (T)	
Max Forgensi – RESL				

Aut For

Spot Forecast for Grouse National Weather Service Missoula MT 258 PM MDT Thu Aug 8 2024 Forecast is based on forecast start time of 0700 MDT on August 09.

DISCUSSION...Mild temperatures continue with westerly winds each afternoon, gusty at times. There is a chance of showers and thunderstorms Friday with a better chance on Saturday. The best chance of storms will be 3-7pm each day but nocturnal storms are possible (10-15% chance) early Saturday. The chance of a wetting rain is 20% Friday and Friday night, jumping to 50% on Saturday. Watch for gusty, erratic winds to 40 mph near any thunderstorms. Rh recovery on Friday night will be decent.

.FRIDAY...

Sky/Weather.....Partly cloudy, then mostly cloudy in the afternoon. Haze in the morning. Slight chance of rain showers in the morning. Chance of showers and thunderstorms in the afternoon.

CWR (> 0.10 Inch)...20 percent.

Chance Lightning....30 percent.

LAL.....3.

Max Temperature.....64-69.

Min Humidity.....25-30 percent.

Wind (20 ft).....Southeast 6-7 mph shifting to the west 7-10 mph in the afternoon. Afternoon gusts to 19 mph.

Mixing Height.....1500 ft agl increasing to 9000 ft agl in the afternoon.

Mixing Winds.....Southwest 10 mph.

Haines Index.....3 very low.

Precip Amount.....0.03-0.12 inches.

.FRIDAY NIGHT...

Sky/Weather.....Partly to mostly cloudy. Chance of showers and thunderstorms in the evening. Slight chance of showers and thunderstorms overnight. Haze overnight.

CWR (> 0.10 Inch)...20 percent.

Chance Lightning....40 percent.

LAL.....3.

Min Temperature.....44-49.

Max Humidity.....65-70 percent.

Wind (20 ft).....Northeast 6-7 mph shifting to the south 5-6 mph overnight.

Mixing Height.....4500 ft agl decreasing to less than 100 ft agl.

Mixing Winds.....Southeast 10 mph.

Precip Amount.....0.03-0.11 inches.

SATURDAY...

Sky/Weather.....Partly cloudy then becoming cloudy in the afternoon. Haze in the morning. Slight chance of rain showers in the morning, then rain showers and chance of thunderstorms in the afternoon.

CWR (> 0.10 Inch)...50 percent.

Chance Lightning....40 percent.

LAL.....3.

Max Temperature.....61-66.

Min Humidity.....38-43 percent.

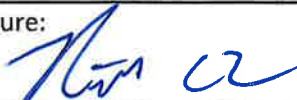
Wind (20 ft).....Southwest 5-6 mph shifting to the west 7-12 mph in the afternoon. Afternoon gusts to 25 mph.

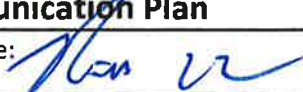
Mixing Height.....500 ft agl increasing to 5500 ft agl late in the morning, then increasing to 7000 ft agl early in the afternoon. *


Mixing Winds.....Southwest 10 mph.

Haines Index.....3 very low.

Precip Amount.....0.08-0.20 inches.

DIVISION/GROUP ASSIGNMENTS							
Grouse Fire				Branch		Division	
						Alpha	
Operational Period							
8/9/24	0600	8/9/24	2000				
Operations Personnel:							
Operations Chief (Plans)		Troy Mueller; Joe Duran (T)		Division/Group Supervisor		Blake Stewart; Bela Harrington (T)	
Operations Chief (Field)		Brandon "Bones" Bonenberger; Ryan Sharpe (T)		Air Attack Supervisor			
Safety Officer		Alison Robb; Jason Miller		Medical Unit Leader		Joel Simonson	
RO #	Item Code	Resource	LWD	Leader Name	# Person	Report Time/Place	Report Time/Place
O-152	TFLD		8/12	Brian Gorwitz	1	ICP/0600	ICP/2000
O-132	TFLD(T)		8/14	Tyson Luicer	1	ICP/0600	ICP/2000
O-129	TFLD(T)		8/19	Donavan Suko	1	ICP/0600	ICP/2000
C-1	CRW1	Bonneville IHC	8/14	Eric Evans	22	ICP/0600	ICP/2000
C-10	CRW1	Flathead IHC	8/14	Shawn Borgen	25	ICP/0600	ICP/2000
*C-11	CR2I	Great Northern	8/19	Brian Buckley	22	ICP/0600	ICP/2000
C-7	CRW2	West Coast Reforestation	8/14	Bejamin Martinez	20	ICP/0600	ICP/2000
C-9	CRW2	Lava River	8/14	Felix Trujillo	20	ICP/0600	ICP/2000
E-33	ENG6	C&C Cougar Fire	8/15	Cathy Reilly	3	ICP/0600	ICP/2000
*E-35	ENG6	Castle Mountain	8/15	Cody Welch	3	ICP/0600	ICP/2000
E-46	ENG6	Butte Fire	8/12	Facincani	2	ICP/0600	ICP/2000
E-53	ENG6	Greywolf	8/20	Jonathan Perez	3	ICP/0600	ICP/2000
E-32	UTV	Medic Team 2	8/19	Austin Perry	2	ICP/0600	ICP/2000
Work Assignments:							
END STATE: Fireline in the correct location with the right dimensions to contain the fire.							
PURPOSE: Keep fire from impacting values at risk.							
TASK: Construct direct and indirect fireline, and mop up where necessary.							
Special Instructions:							
* denotes IA resource							
AMBO 1 (E-3 Fireline Medics) staged at DP-40 and available for all Divisions							
Communication Summary							
See Communication Plan							
Prepared By: Rick Lancaster - RESL				Signature: 		127 Personnel	

DIVISION/GROUP ASSIGNMENTS							
<h1>Grouse Fire</h1>				Branch		Division	
						<h1>Mike</h1>	
Operational Period							
8/9/24	0600	8/9/24	2000				
Operations Personnel:							
Operations Chief (Plans)		Troy Mueller; Joe Duran (T)		Division/Group Supervisor		Chris Rokosh; Zach Valentiner (T)	
Operations Chief (Field)		Brandon "Bones" Bonenberger; Ryan Sharpe (T)		Air Attack Supervisor			
Safety Officer		Alison Robb; Jason Miller		Medical Unit Leader		Joel Simonson	
RO #	Item Code	Resource	LWD	Leader Name	# Person	Report Time/Place	Report Time/Place
O-133	TFLD		8/18	Ryan Hennager	1	ICP/0600	ICP/2000
O-144	TFLD(T)		8/19	Chris Hericks	1	ICP/0600	ICP/2000
C-13	CRW1	Bitterroot IHC	8/11	Cache Gibbons	20	ICP/0600	ICP/2000
*E-57	ENG6	Cahoon Contracting	8/19	Randy Mattson	3	ICP/0600	ICP/2000
O-119	HEQB		8/19	Ryan Williams	1	ICP/0600	ICP/2000
O-124	HEQB(T)		8/20	Joel Wealton	1	ICP/0600	ICP/2000
	HEQB(T)		8/14	Jake Durham	1	ICP/0600	ICP/2000
E-61	FEL1	DS Jr Trucking	8/19	Dave	2	ICP/0600	ICP/2000
E-62	FEL1	DS Jr Trucking	8/19	Clint	2	ICP/0600	ICP/2000
E-82	SKD1	DS Jr Trucking	8/21	Al Noack	2	ICP/0600	ICP/2000
E-83	SKD1	DS Jr Trucking	8/21	Rick Beeman	2	ICP/0600	ICP/2000
E-63	LOGL	Akre Logging	8/20	Leon MacDonnal	2	ICP/0600	ICP/2000
E-67	LOGL	AKkre Logging	8/21	Dean Akre	1	ICP/0600	ICP/2000
E-80	LOGL	John Jump Trucking	8/21		2	ICP/0600	ICP/2000
E-64	LOG	Akre Logging	8/20	Kirk Randolph	1	ICP/0600	ICP/2000
E-65	LOG	Akre Logging	8/20		1	ICP/0600	ICP/2000
E-66	LOG	Akre Logging	8/20		1	ICP/0600	ICP/2000
O-135	THSP		8/19	Sam Hodge	1	ICP/0600	ICP/2000
O-154	THSP		8/12	Russ Walker	1	ICP/0600	ICP/2000
O-59	EMPF		8/18	John Baker	1	ICP/0600	ICP/2000
Work Assignments:							
END STATE: Fuels have been treated and thinned along the Pioneer Mountain Scenic Byway, increasing the probability of success in using the road as a holding feature.							
PURPOSE: Keep fire west of the Pioneer Mountain Scenic Byway, and protect the identified values at risk along the corridor.							
TASK: Pre and improve the Pioneer Mountain Scenic Byway between the Harriet Lou Creek Road and the Division A/M break. Reduce the fuel load using approved specifications and techniques approved by the local Forest.							
Special Instructions:							
* denotes IA resource							
AMBO 1 (E-3 Fireline Medics) staged at DP-40 and available for all Divisions							
Communication Summary							
See Communication Plan							
Prepared By: Rick Lancaster - RESL				Signature: 		49 Personnel	

DIVISION/GROUP ASSIGNMENTS							
Grouse Fire				Branch		Division	
						Whiskey	
Operational Period							
8/9/24		0600		8/9/24		2000	
Operations Personnel:							
Operations Chief (Plans)		Troy Mueller; Joe Duran (T)		Division/Group Supervisor		Geoff Harrison; Alex Doud (T)	
Operations Chief (Field)		Brandon "Bones" Bonenberger; Ryan Sharpe (T)		Air Attack Supervisor			
Safety Officer		Alison Robb; Jason Miller		Medical Unit Leader		Joel Simonson	
RO #	Item Code	Resource	LWD	Leader Name	# Person	Report Time/Place	Report Time/Place
O-143	TFLD		8/20	Rob Dunn	1	ICP/0600	ICP/2000
E-52.1	TFLD(T)		8/18	Matt Larsen	1	ICP/0600	ICP/2000
C-12	CR2I	Greyback Forestry 2B	8/19	Doc Dougherty	20	ICP/0600	ICP/2000
O-115	WFM2	Kaniksu WFM	8/19	Sam Castaldo	12	ICP/0600	ICP/2000
E-52	ENG6	MT-BDF E671	8/18	Molly Chiappetta	8	ICP/0600	ICP/2000
O-56	FMOD	Miller Creek	8/16	Pete Clifford	2	ICP/0600	ICP/2000
O-58	EMPF	Medic Team 4	8/17	Becca Wallace	1	ICP/0600	ICP/2000
Work Assignments:							
END STATE: Fire stays North of Trail 2245 and East of Trail 2046.							
PURPOSE: To secure Southwest corner of the fire to protect Jerked Prairie.							
TASK: Prep Trail 2245 and Trail 2046 and scout for firing opportunities.							
Special Instructions:							
AMBO 1 (E-3 Fireline Medics) staged at DP-40 and available for all Divisions							
Communication Summary							
See Communication Plan							
Prepared By: Rick Lancaster - RESL				Signature: 		47 Personnel	

DIVISION/GROUP ASSIGNMENTS

Grouse Fire				Branch	Division
					Zulu
Operational Period					
8/9/24	0600	8/9/24	2000		

Operations Personnel:

Operations Chief (Plans)	Troy Mueller; Joe Duran (T)	Division/Group Supervisor	
Operations Chief (Field)	Brandon "Bones" Bonenberger; Ryan Sharpe (T)	Air Attack Supervisor	
Safety Officer	Alison Robb; Jason Miller	Medical Unit Leader	Joel Simonson

RO #	Item Code	Resource	LWD	Leader Name	# Person	Report Time/Place	Report Time/Place

Work Assignments:

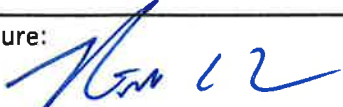
UNSTAFFED

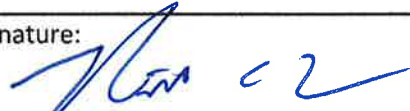
Special Instructions:

Communication Summary

See Communication Plan

Prepared By: Rick Lancaster - RESL	Signature: 	Personnel
------------------------------------	---	-----------

DIVISION/GROUP ASSIGNMENTS							
<h1>Grouse Fire</h1>				Branch		Division	
						<h1>Structure</h1>	
Operational Period							
8/9/24	0600	8/9/24	2000				
Operations Personnel:							
Operations Chief (Plans)		Troy Mueller; Joe Duran (T)		Division/Group Supervisor		Joe Tjaden	
Operations Chief (Field)		Brandon "Bones" Bonenberger; Ryan Sharpe (T)		Air Attack Supervisor			
Safety Officer		Alison Robb; Jason Miller		Medical Unit Leader		Joel Simonson	
RO #	Item Code	Resource	LWD	Leader Name	# Person	Report Time/Place	Report Time/Place
O-71	TFLD		8/16	Mike Gustafson	1	ICP/0600	ICP/2000
*O-142.6	TFLD(T)		8/17	Roy Kottwitz	1	ICP/0600	ICP/2000
O-17	TFLD(T)		8/11	Evan Burke	1	ICP/0600	ICP/2000
O-72	TFLD(T)		8/16	Fernando Quiroga	1	ICP/0600	ICP/2000
*	ICT4(T)			Nate Decker	1	ICP/0600	ICP/2000
E-2	ENG6	Greywolf	8/13	Grant	3	ICP/0600	ICP/2000
E-36	ENG6	Robert Bakken	8/15	Bakken	3	ICP/0600	ICP/2000
E-37	ENG6	Whitegrass Fire	8/16	Whitegrass	3	ICP/0600	ICP/2000
E-69	ENG6	MT-CES E1315	8/14	Peyton Klanecky	3	ICP/0600	ICP/2000
E-70	ENG6	Mountain Man	8/20	Leyva	3	ICP/0600	ICP/2000
E-13	WTS2	Blacktail Fire	8/10	Smith	1	ICP/0600	ICP/2000
Work Assignments:							
END STATE: Private property prepped and structures protected.							
PURPOSE: Protect structures and stop fire impact to structures in Pettengill and on byway.							
TASK: Secure structures on 186 road, scenic byway, and continue to monitor for hot spots.							
Special Instructions:							
* denotes IA Resource							
AMBO 1 (E-3 Fireline Medics) staged at DP-40 and available for all Divisions							
Communication Summary							
See Communication Plan							
Prepared By: Rick Lancaster - RESL				Signature: 		22 Personnel	

DIVISION/GROUP ASSIGNMENTS							
<h1>Grouse Fire</h1>				Branch		Division	
						<h2>Staging</h2>	
Operational Period							
8/9/24	0600	8/9/24	2000				
Operations Personnel:							
Operations Chief (Plans)		Troy Mueller; Joe Duran (T)		Division/Group Supervisor			
Operations Chief (Field)		Brandon "Bones" Bonenberger; Ryan Sharpe (T)		Air Attack Supervisor			
Safety Officer		Alison Robb; Jason Miller		Medical Unit Leader		Joel Simonson	
RO #	Item Code	Resource	LWD	Leader Name	# Person	Report Time/Place	Report Time/Place
E-43	DOZ3	C&C Stacking	8/16	Cornell	2	DP40/0600	ICP/2000
E-94	EXC2	Blacktail Fire	8/21		2	Staging/0600	ICP/2000
E-108	EXC2	Grizzly Timber	8/21	Carissa Jenkins	2	Staging/0600	ICP/2000
E-9	SKG1	Bigfoot	8/11	Spencer	1	DP40/0600	ICP/2000
E-42	SKG1	RT Logging	8/16	Thompson	2	DP40/0600	ICP/2000
E-84	FEL1	DS Jr Trucking	8/21		2	Staging/0600	ICP/2000
Work Assignments:							
END STATE: Provide incident support.							
PURPOSE: Respond as needed.							
TASK: Maintain operational readiness.							
Special Instructions:							
AMBO 1 (E-3 Fireline Medics) staged at DP-40 and available for all Divisions							
Communication Summary							
See Communication Plan							
Prepared By: Rick Lancaster - RESL				Signature: 		11 Personnel	

AIR OPERATIONS SUMMARY				Prepared By:	Matt Lingenfelter	Prepared Date:	8/8/2024	Prepared Time:	19:00		
1. INCIDENT NAME: Grouse				2. Operational Date: August 9, 2024			Start Time: 0800		Butte Sunset: 20:50	Butte Pumpkin: 21:20	
4. Remarks Safety Notes, Hazards, Air ops Mission plan for density altitude (DA) and windy conditions Report any unauthorized/UAS activity Wash bucket, if moving between dipsites over Contental Divide. Offer constructive feedback to pilots during tactical operations Status current at time of report. Changes occur constantly.				5. Medevac Aircraft: Order through dispatch Life Flight ALS KBTM 800-232-0911 4MA Litter Capable WR Helibase 8MG CMH Short Haul HRF							
7. Personnel:				Phone #		Frequencies:		AM		FM	
AOBD	Matt Lingenfelter		970-803-4617	Nat. Flight Follow		168.6500 Rx/Tx Tn 110.9				9. Fixed-Wing GACC: Air Tankers/SEATS: Order through dispatch	
				Grouse A/G Primary Grouse A/G Secondary		168.5250 169.8125				Lead Plane/ASM: Order through dispatch	
Dillon Dispatch	Aircraft Desk		406-683-3939	Grouse A/A TFR Grouse A/A Rotor		120.100 124.600					
				IA A/G 29		166.9000					
				IA A/G 26		166.6875					
4MA	Nick Plovanic		406-366-0179	IA A/A Primary		119.625				Air Attack: Order through dispatch	
5GE	Rich Reneau		406-493-5799	IA A/A Secondary		134.150					
1HT	Joel Anderson		208-413-1602	VMED 28 (TAN)		155.340 Tx Tn 156.7				Helicopters GACC: Order through dispatch T1 Avail GACC Lend/Lease	
2AC	Jerrid Silva		406-381-5963	Medical WHITE		155.280 Tx Tn 156.7					
OPJ	Ricky Cox		601-527-7360	DNRC A/G Yellow		151.2200					
2HX	Josh Quinn		352-933-1613	DNRC A/G Orange		151.4000					
										SMJK GACC: Order through dispatch	
HELICOPTERS/UAS											
FAA N#	Call Sign	Make/Model	Type	Base	Available	Remarks					
N144MA	4MA	Bell 407HP	3	WRH	830	Committed Forest IA					
N52HX	2HX	Bell 429	3	KBTM	930	Grouse					
N205GE	5GE	UH-1H	2	KBTM	930	Restricted/Committed Forest IA					
N721HT	1HT	S-64	1	KBTM	930	NRGA Support/Tanked					
N172AC	2AC	S-64	1	KBTM	930	NRGA Support/Tanked					
N810PJ	0PJ	UH-60A	1	KBTM	930	NRGA Support/Bucket					
UAS T3	UR-32	Alta X	3	Grouse	TBD	Grouse PSD/IR					
Notes/Remarks											
Flight follow through appropriate dispatch until contact has been made on the incident. Then flight follow local.											
Cost summaries matt.lingenfelter@state.co.us/Buttehb24@gmail.com											

CONTROLLED UNCLASSIFIED INFORMATION//BASIC (CUI)

INCIDENT RADIO COMMUNICATIONS PLAN		1. INCIDENT NAME		2. DATE/TIME PREPARED		3. OPERATIONAL PERIOD DATE/TIME		
ICS-205		Grouse Fire		08-08-2024 1300		08-09-2024 0600-2000		
4. BASIC RADIO CHANNEL UTILIZATION								
Ch #	Channel Name	Assignment	RX Frequency	RX Tone/NAC	TX Frequency	TX Tone/NAC	Mode Digital (D) Analog (A)	Remarks
1	CMD1	Not Installed	170.0000	162.2	166.6750	162.2	A	Sheep Mountain
2	CMD2	Not Installed	170.6875	162.2	166.5750	162.2	A	Stine Mountain
3	FS RPT		173.0875	167.9	165.7250	167.9	A	Odell FS Repeater
4	FS DIR		173.0875	0.000	173.0875	123.0	A	Big Hole Direct
5	VPOND PK	Dillon Dispatch	173.0875	0.000	165.7250	103.5	A	FS Vipond Park
6	R1SOARPT	Tactical RPT	173.1875	136.5	164.3875	136.5	A	FS Scene Of Action (SOA) RPT
7	TAC7	DIV A	168.0500	162.2	168.0500	162.2	A	Division A
8	TAC8	DIV M	168.2000	162.2	168.2000	162.2	A	Division M
9	TAC9	DIV W	168.6000	162.2	168.6000	162.2	A	Division W
10	TAC10	DIV Z	166.7250	162.2	166.7250	162.2	A	Division Z
11	TAC11	Structure Group	166.7750	162.2	166.7750	162.2	A	Structure Group
12	TAC12	Unassigned	168.2500	162.2	168.2500	162.2	A	
13	VMED28	Medical	155.3400	0.000	155.3400	156.7	A	Medical/Ambulance
14	A/G PRI	Air to Ground Pri	168.5250	0.000	168.5250	0.000	A	Primary Air to Ground
15	A/G SEC	Air to Ground Sec	169.8125	0.000	169.8125	0.000	A	Secondary Air to Ground
16	AIRGUARD	EMERGENCY USE ONLY	168.6250	0.000	168.6250	110.9	A	EMERGENCY USE ONLY
ICS-205		Dave Miller		Current Clone Version:		080924		ALWAYS POST A HUMAN REPEATER TO RELAY MESSAGES OUT OF AREAS WHERE YOU HAVE INADEQUATE COMMUNICATIONS
Prepared By:		COML(t)		DPH/GPH:		Press & Hold # Key to Check Version		
				P-150/S/KNG/BKR:		Look at Zone Label for Version		

COMMUNICATIONS UNIT 24 hr phone:

208-891-8019

CONTROLLED UNCLASSIFIED INFORMATION//BASIC (CUI)

Resource Advisor Messages

Ayme Swartz (Archaeologist) 406-560-5250
ayme.swartz@usda.gov

- You are in bear country!!! Store all attractants such as food, drinks, garbage, toiletries, oil etc. in a bear proof container. *Do NOT sleep with food in tents at night.*
- This fire is located within an active grazing allotment. There may a few head of cattle remaining up Pettengill creek. Please let the local district know of any sightings.
- **AIR OPS**—There are aquatic invasive species in the rivers such as whirling disease and New Zealand mud snails. Do not contaminate our lakes!!!
 - ✓ If river water is used, do not drop into any other waterways and do not cross-contaminate buckets.
 - ✓ Do not use water from west of the Continental Divide.
 - ✓ Avoid dipping or scooping water from multiple water sources within the same operational period to minimize cross-contamination of water sources.
 - ✓ Use deeper (blue) water whenever possible. Avoid areas that will intake mud or plants.
 - ✓ Avoid transferring water between drainages or between unconnected waters within the same drainage.
 - ✓ Do not dump water directly from one stream or lake into another. Avoid spraying suppression water into local waterbodies (ponds, lakes, rivers, streams, wetlands, seeps, or springs).
 - ✓ **Do not dip out of Bobcat or Schwinger lakes!**
- There is a weed wash located at the junction of highways 43 and 73 at the H-J. Please use upon arrival and departure, we are striving to prevent the spread of noxious weeds.

\$\$\$ GROUSE FINANCE PROCEDURES \$\$\$

Finance email: 2024.grouse.finance@firenet.gov

Finance Phone Numbers

Time (Personnel and Equipment): 208-914-1873

Comp/Claims: 208-891-6348

Finance check-in: Please email electronic copies of the following documents as applicable:

- Contract/Agreement/State Cooperative Agreement
- Casual Hire Form
- Resource Order
- Crew Manifest
- Travel CTRs and Shift Tickets

Submitting Time: Please email completed CTRs and/or Shift Tickets signed by immediate supervisor **every 2 days, after submitting travel time**. Include Resource Order Number in the subject line.

- Electronic CTRs and Shift Tickets are available through the QR code on the IAP cover.
- A **legible photo** is acceptable.

**** All time must include required justifications for hazard pay, compensable meal breaks, or excess hours. Don't forget name, RO# and date. Include a valid phone # and email.**

Finance demob: Please **Email or call** Finance to notify them that you are demobing.

- Provide email and phone number on **final** CTR and/or Shift Ticket.
- Email electronic copies of your final CTRs and Shift Tickets, including travel time. Include in the email they are final documents for the incident.
- Finance will email final time documents (including OF-288/286) electronically for review and signatures.

Medical

Please work directly with the **Medical Unit Leader**. The MEDL will work with Finance to ensure forms are available and completed.

Damages or Claims

Do not wait until day of demob. An electronic OF-289, *Property Loss or Damage Report*, is available through the QR Code on the IAP cover. Contact Comp/Claims (or FSC) with questions. Include witness statements, signatures and **your contact info**.

Training Specialist (TNSP) Message/Training Process

Trainees – have you checked-in?

Just a reminder that if you are a trainee, single resource and above, the TNSP is tracking your assignment to provide documentation back to the home unit along with final training incident reports to the IMT and GACC's.

The TNSP is available to answer questions and/or help guide both the Trainee and Evaluator through the process. For more information on position task books visit, www.nwcg.gov/training/nwcg-position-task-books

Trainee Process	Notes	What to do
Check In	Complete the Trainee Check In Form	QR code on front of the IAP – Link Tree Complete “Trainee Check-In Form”
Training Assignment	Taking ownership. Identify tasks and learning opportunities.	Visit with your evaluator
PTB Evaluation Record	Make sure to receive a completed, legible evaluation record and Incident Personnel Performance Rating (ICS 225). Incomplete or incorrect information can delay certification.	Review evaluation records and send copies of the following items to the TNSP via email or text message. <ul style="list-style-type: none"> • Evaluation Record • Incident Personnel Performance Rating (ICS 225) • Task Book
Close Out	Schedule and “Exit Interview” with TNSP	QR code on front of the IAP – Link Tree Complete “Trainee Exit Interview” Or call TNSP to discuss
Incident Training Specialist	Wendy Fischer	wendy_fischer@firenet.gov (970)759-9610

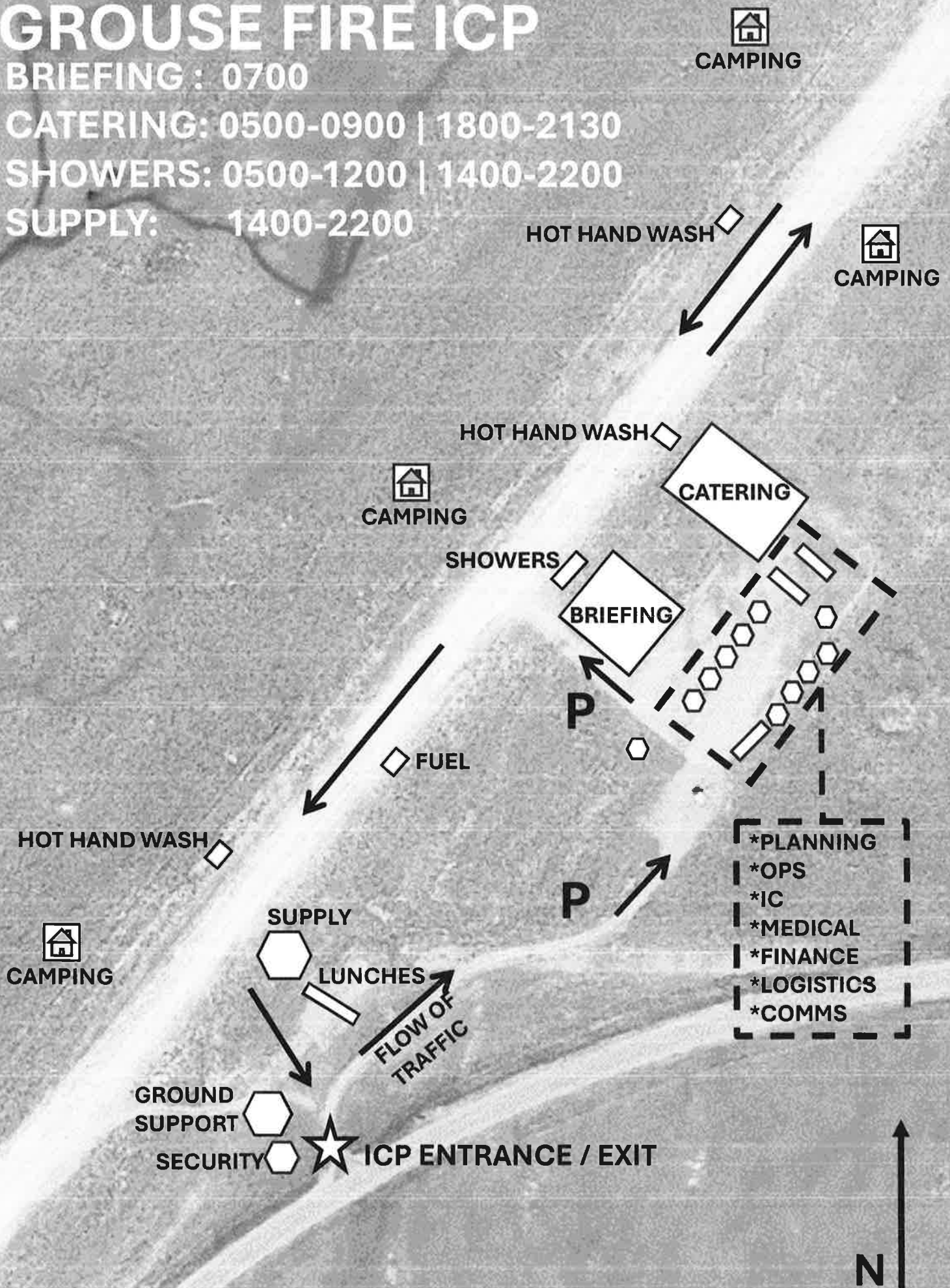
GROUSE FIRE ICP

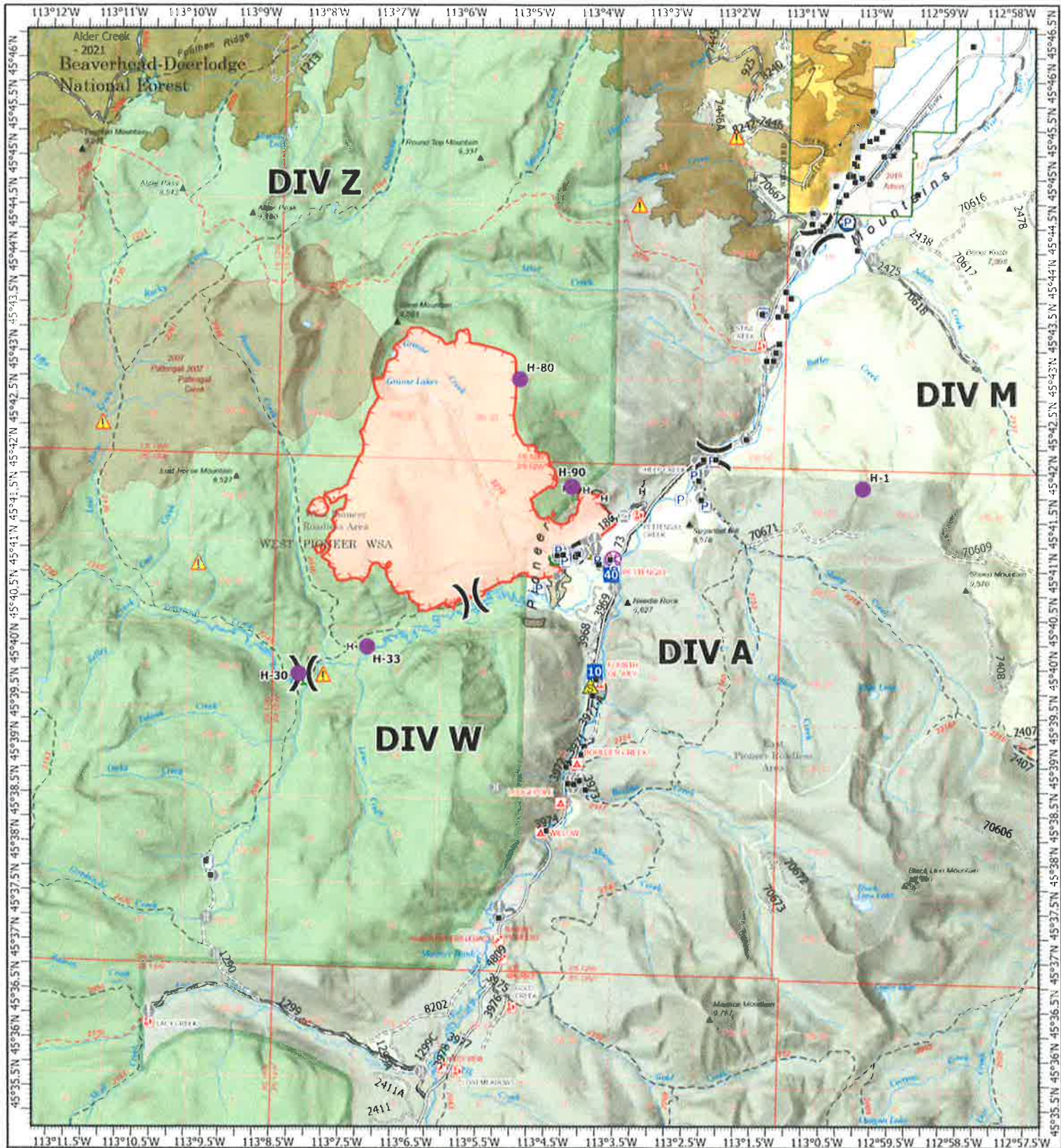
BRIEFING: 0700

CATERING: 0500-0900 | 1800-2130

SHOWERS: 0500-1200 | 1400-2200

SUPPLY: 1400-2200





IAP

Grouse
 MT-BDF-246327
 08/09/2024 Day

4149 acres at 08/08/2024 @ 1542 MDT

0 0.250.5 1 1.5 2

Miles



1:100,000 © 1984 CBM 3/18/2024 1956
 Acres from IR
 North American 1983 Datum, Lanting Grid

Wildfire Daily Fire Perimeter	Other	Road, high clearance
Contained	Gate	FS Closed Road
Uncontained	Bridge	Infrastructure Bridge EDW Deck Type
Structure	Road Repair	USFS Roadless Areas
Completed Hand Line	Culvert	FS Wilderness Study Area Boundary
Access Route	Safety Zone	Forest Service Land
Other	Hazard	Bureau of Land Management Lands
Helispot	Draft Site	Interagency Fire Perimeter History Since 2004
UAS Launch and Recovery	Road	Interagency Fuels Treatments
Division Break	Road, Dirt/Gravel	Alder Creek 2021
Drop Point	Road, Paved	
Value at Risk	Road, Dirt/Gravel	



Current Maps



Medical Plan (206 WF)

ROCKY MOUNTAIN INCIDENT MANAGEMENT

1. Incident / Project Name			2. Operational Period			
Grouse Fire			Date/Time: 8/9/2024 0600-2000			
3. Ambulance Services						
Name	Address	Phone and Emergency Frequency	Advanced Life Support (ALS)			
			YES	NO		
A1 Ambulance	Butte, MT	406-490-3130	X			
Anaconda Fire Department (can rendezvous at HWY 569/HWY 43)	Anaconda, MT	406-463-2164		X		
4. Air Ambulance Services						
Name	Phone	Type of Aircraft & Capability				
Lifelight	800-232-0911 Order through Communications	ALS with critical care				
4MA Forest IA	Order through Communications	Bell 407 HP Litter Capable				
2HX Grouse Fire	Order through Communications	Bell 429 Hoist Capable				
***** TRAVEL TIME FROM ICP*****						
Name Complete Address	LAT: DD° MM.MMM'N LONG: DD° MM.MMM'W	Travel Time From ICP		Phone	Helipad Yes /No	Level of Care
		Air	Ground			
St Vincent Regional 1027 N 27th St Billings, MT	Lat: 45° 47.658' N Long: 108° 31.003' W	1 hr	4 hrs	406-657-7000	YES	Level 1 Trauma Cardiac & Cath Lab Stroke Center
St Patrick Hospital 500 W Broadway St Missoula, MT	Lat: 46° 52.533' N Long: 114° 0.001' W	45 min	2.25 hrs	406-543-7271	YES	Level 2 Trauma Cardiac & Cath Lab Stroke Center
St James Healthcare 400 S Clark St Butte, MT	Lat: 46° 0.512' N Long: 112° 32.742' W	35 min	45 min	406-723-2585	YES	Level 3 Trauma Cardiac Certified Stroke Certified
Community Hospital of Anaconda 401 W PennsylvaniaST Anaconda, MT	Lat: 46° 7.950' N Long: 112° 57.427' W	35 min	50 min	406-563-8500	YES	Local Emergency Room Only
*Travel times are from Grouse Fire ICP to the facility and DO NOT include response time to the incident.						
6. Division Branch Group						
ALPHA	EMS Responders & Capabilities:	AMBO 1 - Ellis MEDIC TEAM 2 - Perry				
	Equipment Available on Scene:	4x4, UTV, ALS Kit, ALS Ambulance, Oxygen				
	Medical Emergency Channel:	COMMAND A/G: VMED 28				
MIKE	EMS Responders & Capabilities:	MEDIC 3 - Baker				
	Equipment Available on Scene:	4x4, ALS Kit				
	Medical Emergency Channel:	COMMAND A/G: VMED 28				
WHISKEY	EMS Responders & Capabilities:	MEDIC 4 - Wallace (Spiked with Kaniksu Mod)				
	Equipment Available on Scene:	4x4, ALS Kit				
	Medical Emergency Channel:	COMMAND A/G: VMED 28				
ZULU	EMS Responders & Capabilities:	UNSTAFFED				
	Equipment Available on Scene:					
	Medical Emergency Channel:	COMMAND A/G: VMED 28				
STRUCTURE GRP	EMS Responders & Capabilities:					
	Equipment Available on Scene:					
	Medical Emergency Channel:	COMMAND A/G: VMED 28				
STAGING	EMS Responders & Capabilities:					
	Equipment Available on Scene:					
	Medical Emergency Channel:	COMMAND A/G: VMED 28				
8. Prepared by: (Medical Unit Leader)		Date	Reviewed by: (Safety Officer)		Date	
/s/ Dan Leone MEDL		8/8/2024	/s/ Jason Miller SOFC		8/8/2024	

MEDICAL PLAN (ICS 206 WF)

Controlled Unclassified Information//Basic

Medical Incident Report

FOR A NON-EMERGENCY INCIDENT, WORK THROUGH CHAIN OF COMMAND TO REPORT AND TRANSPORT INJURED PERSONNEL AS NECESSARY.

FOR A MEDICAL EMERGENCY: IDENTIFY ON SCENE INCIDENT COMMANDER BY NAME AND POSITION AND ANNOUNCE "MEDICAL EMERGENCY" TO INITIATE RESPONSE FROM IMT COMMUNICATIONS/DISPATCH.

Use the following items to communicate situation to communications/dispatch.

1. CONTACT COMMUNICATIONS / DISPATCH (Verify correct frequency prior to starting report)

Ex: "Communications, Div. Alpha. Stand-by for Emergency Traffic."

2. INCIDENT STATUS: Provide incident summary (including number of patients) and command structure.

Ex: "Communications, I have a Red priority patient, unconscious, struck by a falling tree. Requesting air ambulance to Forest Road 1 at (Lat./Long.) This will be the Trout Meadow Medical, IC is TFLD Jones. EMT Smith is providing medical care."

Severity of Emergency / Transport Priority	<input type="checkbox"/> RED / PRIORITY 1 Life or limb threatening injury or illness. Evacuation need is IMMEDIATE <i>Ex: Unconscious, difficulty breathing, bleeding severely, 2^o - 3^o burns more than 4 palm sizes, heat stroke, disoriented.</i> <input type="checkbox"/> YELLOW / PRIORITY 2 Serious Injury or illness. Evacuation may be DELAYED if necessary. <i>Ex: Significant trauma, unable to walk, 2^o - 3^o burns not more than 1-3 palm sizes.</i> <input type="checkbox"/> GREEN / PRIORITY 3 Minor Injury or illness. Non-Emergency transport <i>Ex: Sprains, strains, minor heat-related illness.</i>	
Nature of Injury or Illness & Mechanism of Injury		<i>Brief Summary of Injury or Illness (Ex: Unconscious, Struck by Falling Tree)</i>
Transport Request		<i>Air Ambulance / Short Haul/Hoist Ground Ambulance / Other</i>
Patient Location		<i>Descriptive Location & Lat. / Long. (WGS84)</i>
Incident Name		<i>Geographic Name + "Medical" (Ex: Trout Meadow Medical)</i>
On-Scene Incident Commander		<i>Name of on-scene IC of Incident within an Incident (Ex: TFLD Jones)</i>
Patient Care		<i>Name of Care Provider (Ex: EMT Smith)</i>

3. INITIAL PATIENT ASSESSMENT: Complete this section for each patient as applicable (start with the most severe patient)

Patient Assessment: See IRPG page 106

Treatment:

4. TRANSPORT PLAN:

Evacuation Location (if different): (Descriptive Location (drop point, intersection, etc.) or Lat. / Long.) Patient's ETA to Evacuation Location:

Helispot / Extraction Site Size and Hazards:

5. ADDITIONAL RESOURCES / EQUIPMENT NEEDS:

Example: Paramedic/EMT, Crews, Immobilization Devices, AED, Oxygen, Trauma Bag, IV/Fluid(s), Splints, Rope rescue, Wheeled litter, HAZMAT, Extrication

6. COMMUNICATIONS: Identify State Air/Ground EMS Frequencies and Hospital Contacts as applicable

Function	Channel Name/Number	Receive (RX)	Tone/NAC *	Transmit (TX)	Tone/NAC *
COMMAND					
AIR-TO-GRND					
TACTICAL					

7. CONTINGENCY: Considerations: If primary options fail, what actions can be implemented in conjunction with primary evacuation method? Be thinking ahead.

8. ADDITIONAL INFORMATION: Updates/Changes, etc.

REMEMBER: Confirm ETA's of resources ordered. Act according to your level of training. Be Alert. Keep Calm. Think Clearly. Act Decisively.