



Grouse Fire

MT-BDF-246327, P1R4SM24 (0102)

Saturday, August 10, 2024

0600-2000

Safety Starts Here

During a Storm:

- Stay out of dry creek beds
- Do not use radios or telephones
- Put down all tools
- Sit or crouch if in open country
- Avoid grouping together
- Do not handle flammable materials in open containers
- Take shelter in vehicles if possible. Stay in your vehicle
- Turn off machinery, electric motors
- Take shelter in a building, if available when there is no shelter, avoid high objects such as lone trees
- If only isolated trees are nearby, the best protection is to crouch in the open, keeping a distance of twice the height of the tree away
- Keep away from wire fences, telephone lines, and conductive elevated objects.
- Avoid ridge tops, hilltops, wide-open spaces, ledges, rock outcroppings, or exposed shelters
- Advise crew that if they feel an electrical charge—if their hair stands on end or their skin tingles—lightning may be about to strike them. They must drop to the ground immediately



Incident Commanders

Bill Waln, Phil Daniels

Jay Mickey (T)

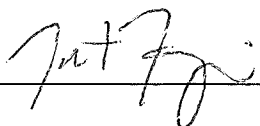


Available at this site: Remote Incident Check-in, IAP's, Maps, Finance, Fillable-CTR's, Training, Demob, Shift Tickets and General Messages

INCIDENT OBJECTIVES	1. Incident Name GROUSE FIRE	2. Date Prepared August 9, 2024	3. Time 1600
4. Operational Period: August 10, 2024 Day Operations 0600-2000			
<p>Leaders Intent: It is the Incident Commander's expectation that we as an organization will meet the following leader's intent, as well as the incident objectives identified below:</p> <ul style="list-style-type: none"> • Ensure all incident strategies and actions reflect a commitment to public, responder, and aviation safety through use of an adaptive risk management process as outlined in the IRPG and the aviation risk assessment process. • Treat all incident personnel, cooperators, and local public with dignity and respect, and create a "no tolerance" atmosphere for harassment, alcohol, or illegal drug use. • Respect the integrity of the cultural resources in and adjacent to the incident, coordinating all operational activities with the Forest Archaeologist. <p>Incident Objectives:</p> <ul style="list-style-type: none"> • Continually provide for emergency personnel and public safety through the utilization of a deliberate, risk-informed approach, with avenues for feedback from personnel. • Use a full suppression strategy with a combination of direct, indirect, and point zone protection tactics where reasonable to protect the identified critical values of risk. • Develop contingency plans to identify management actions to be taken if the fire threatens Pioneer Scenic Byway, Jerked Prairie, and/or Highway 43. • Foster and maintain relationships with the public, cooperators, and vested parties. • Ensure coordinated, timely, and accurate release of information to the public and land managers, including the BLM and the Montana DNRC, utilizing the full suite of platforms. • Maintain fiscal accountability by making good risk-informed decisions. 			
8. Attachments (X if attached)			
<input checked="" type="checkbox"/>	ICS 203	<input checked="" type="checkbox"/>	Team Welcome Letter
<input checked="" type="checkbox"/>	Incident Weather Forecast	<input checked="" type="checkbox"/>	Demob Tips
<input checked="" type="checkbox"/>	Incident Weather Forecast	<input checked="" type="checkbox"/>	Fire Behavior Forecast
<input checked="" type="checkbox"/>	ICS 205 Incident Radio Comm Plan	<input checked="" type="checkbox"/>	NR Chainsaw Parts Order Form
<input checked="" type="checkbox"/>	Safety Message	<input checked="" type="checkbox"/>	Resource Advisor Message
<input checked="" type="checkbox"/>	ICS 204 Division Assignment Lists	<input checked="" type="checkbox"/>	Incident Map
<input checked="" type="checkbox"/>	ICS 220 Air Operations Summary	<input checked="" type="checkbox"/>	Human Resource Message
<input checked="" type="checkbox"/>	ICS 220 Air Operations Summary	<input checked="" type="checkbox"/>	ICS 206 Medical Plan
<input checked="" type="checkbox"/>	ICS 204 Division Assignment Lists	<input checked="" type="checkbox"/>	Training Message
<input checked="" type="checkbox"/>	ICS 220 Air Operations Summary	<input checked="" type="checkbox"/>	ICS 214 Activity Log
<input checked="" type="checkbox"/>	ICS 220 Air Operations Summary	<input checked="" type="checkbox"/>	Finance Message
9. Prepared by SITE PETER BARTH <i>Peter Barth</i>	9. Approved by (Incident Commander) WALN / DANIELS / MICKEY (T) <i>Bill Waln</i>		

ORGANIZATION ASSIGNMENT LIST

Incident Name		Operations Section		
Grouse Fire		Field	Brandon "Bones" Bonenberger, Ryan Sharpe (T)	
		Planning	Troy Mueller, Joe Duran (T)	
Date Prepared	Time Prepared	Strategic	Rodney Redinger	
8/9/2024	1900	Division/Group		
Operational Period				
8/10/2024 0600 to 8/10/2024 2000				
Incident Commander and Staff		Alpha	DIVS	Blake Stewart, Bela Harrington (T)
Incident Commander	Bill Waln, Jay Mickey (T)	Mike	DIVS	Chris Rokosh, Zach Valentiner (T)
Deputy	Phil Daniels	Whiskey	DIVS	Geoff Harrison, Alex Doud (T)
Safety Officer	Alison Robb, Jason Miller	Zulu	DIVS	
Medical Unit	Joel Simonson, Dan Leone, Kristina Bastian (T)	Structure	Group	Joe Tjaden
Liaison Officer	Tim Flanary	Staging	Group	
Information Officer	Cass Cairns, Lynn Lockwood			
Agency Representatives		Air Operations Branch		
BDNF	Tim Lahey, Kristen Thompson (T)	Air Operation Branch Director		Matt Lingenfelter
BLM	Lindsey Babcock	Air Support Group Supervisor		Randy Gilbert
MT-DNRC	Tim Egan	Air Tactical Group Supervisor		
		Helibase Manager		
		Finance Section		
		Chief	Kayla Davin	
		Time Unit	Natasha Goedert (T)	
		Cost Unit	Annette Pintado (v)	
		Comp/Claims	Arlene Tucker (T)	
Planning Section				
Chief	Peter Barth, Devin Haynie (T) Kurt Wetzstein (PSC3)			
Resource Unit	Max Forgensi, Rick Lancaster Kellie Stover			
Training Specialist	Wendy Fisher, Carolyn Blatz (T)	Logistics Section		
Human Resource Specialist	Debby Hassel (v)	Chief		Darin Gehring, Randy Spiering Jamie Rietz (T)
Meteorologist	Mark Loeffelbein	Facilities Unit		Ish Ennis, Ken Hehr, Paul Kimpling
Demobilization Unit	Logan Brown	Ground Support Unit		Lee Walker
Check In	Carla Rumsey	Communications Unit		Walter Warrick, Dave Miller (T)
Documentation Unit	Spencer Pollock (RIST)	Supply Unit		Robin Brooks
Resource Advisor	Ayme Swartz	Food Unit		Wally Leander
Long Term Analyst	Erin Noonan	Security		Dave Tyndell
GIS Specialists	Sarlyn McCormick, Chris "Fern" Ferner Emma Vakili	Ordering		Beth Youngstrom, Monty Bollock (T)
IT Specialist	Eric Simmons, Tyler Ward (T)			
Max Forgensi – RESL				





Grouse Weather Forecast

FORECAST NO: 1
FORECAST FOR: Sat, Aug 10, 2024 Day
FORECAST ISSUED: Aug 9, 2024, 1800 MDT

NAME OF FIRE: Grouse
UNIT: Beaverhead-Deerlodge NF
SIGNED: //s// Mark Loeffelbein - IMET

WEATHER DISCUSSION: ...The fire will be in a more active weather pattern for the next week starting with a little low pressure system moving over the area. Lingering rain showers will be possible in the morning with thunderstorms becoming more likely after 1200 with the best chance of thunderstorms between 1500-1900. Thunderstorms will track from the southwest to northeast. Lightning and wind gusts to 40 mph will be possible with any passing storms. Clouds will clear out after midnight allowing temperatures to fall rapidly overnight.

FORECAST FOR TODAY: Mostly Cloudy (80-100%) after 1000. 10% Chance of rain showers before 1200.

Showers and Thunderstorms likely after 1200. Best chance between 1500-1900.

Max Temperature(°F):

(6500 ft.) 65-70 (5-8° cooler) **Min RH: (6500 ft.)** 38-43% (8-15% Higher)
(8500 ft.) 58-63 (5-8° cooler) **Min RH: (8500 ft.)** 38-43% (8-15% Higher)

20 FT Winds:

Slope/Valleys: West facing slopes West 4-8 mph after 1030, otherwise calm becoming upslope 3-6 mph after 1030

Wise River Drainage: Up Drainage (Southeast) 4-8 Gusts to 14 mph after 1030.

Ridgetops: Southwest/West 8-12 Gusts to 18 mph.

CWR (0.1"+): 40% **Chance of Lighting:** 60% **LAL:** 3

Inversion: Weak inversions. **Haines:** 3 Very Low

OUTLOOK FOR TONIGHT: Mostly Cloudy (80-100%)...becoming Partly Cloudy (10-20%) after 2200. 10% Chance of showers and thunderstorms before 2200.

Min Temperature (°F):

Lower Elev. (6500 ft.) 40-45
Upper Elev. (8500 ft.) 42-47

Max RH:

Lower Elev. 90-100%
Upper Elev. 70-80%

20 FT Winds:

Slope/Valleys: Upslope 3-6 mph until 2200, then downslope 2-4 mph.

Ridgetops: Becoming Light after 2200.

CWR (0.1"+): 0% **LAL:** 1 **Haines:** 3 Very Low


EXTENDED OUTLOOK (4500 ft.):

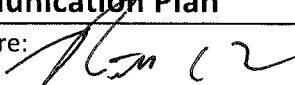
Sunday...Partly Cloudy (15-25%). 15% chance of thunderstorms in the afternoon. Hazy. High 67-72. RH: 20-25%. Winds: West 8 to 12 Gusts to 18 mph. Haines: 4. CWR (0.1"+): Less than 5%

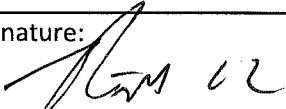
Monday and Tuesday...Partly Cloudy (40-60%). 20% Chance of Thunderstorms in the afternoon. Hazy. High 69-74. RH: 25-30%. Winds: Southwest 9 to 13 Gusts to 25 mph. Haines: 4. CWR (0.1"+): 10%

PLEASE submit your weather observations to the IMET.

Snap a picture of your obs and text them to: 801-882-7268

DIVISION/GROUP ASSIGNMENTS							
Grouse Fire				Branch		Division	
						Alpha	
Operational Period							
8/10/24		0600	8/10/24	2000			
Operations Personnel:							
Operations Chief (Plans)		Troy Mueller; Joe Duran (T)		Division/Group Supervisor		Blake Stewart; Bela Harrington (T)	
Operations Chief (Field)		Brandon "Bones" Bonenberger; Ryan Sharpe (T)		Air Attack Supervisor			
Safety Officer		Alison Robb; Jason Miller		Medical Unit Leader		Joel Simonson	
RO #	Item Code	Resource	LWD	Leader Name	# Person	Report Time/Place	Report Time/Place
O-152	TFLD		8/14	Brian Gorwitz	1	ICP/0600	ICP/2000
O-132	TFLD(T)		8/14	Tyson Luicer	1	ICP/0600	ICP/2000
O-129	TFLD(T)		8/19	Donavan Suko	1	ICP/0600	ICP/2000
C-1	CRW1	Bonneville IHC	8/14	Eric Evans	22	ICP/0600	ICP/2000
C-10	CRW1	Flathead IHC	8/14	Shawn Borgen	24	ICP/0600	ICP/2000
*C-11	CR2I	Great Northern	8/19	Brian Buckley	22	ICP/0600	ICP/2000
C-7	CRW2	West Coast Reforestation	8/14	Bejamin Martinez	20	ICP/0600	ICP/2000
C-9	CRW2	Lava River	8/14	Felix Trujillo	20	ICP/0600	ICP/2000
E-33	ENG6	C&C Cougar Fire	8/15	Cathy Reilly	3	ICP/0600	ICP/2000
*E-35	ENG6	Castle Mountain	8/15	Cody Welch	3	ICP/0600	ICP/2000
E-53	ENG6	Graywolf	8/20	Jonathan Perez	3	ICP/0600	ICP/2000
E-9	SKG1	Bigfoot	8/10	Spencer	1	ICP/0600	ICP/2000
E-42	SKG1	RT Logging	8/16	Thompson	2	ICP/0600	ICP/2000
E-32	EMPF	Medic Team 2	8/11	Kahl Clark	2	ICP/0600	ICP/2000
E-3	AMB2	Fireline Medics (AMBO 1)	8/20	Andrew Ellis	2	ICP/0600	ICP/2000
Work Assignments:							
END STATE: Fireline in the correct location with the right dimensions to contain the fire.							
PURPOSE: Keep fire from impacting values at risk.							
TASK: Construct direct and indirect fireline, and mop up where necessary.							
Special Instructions:							
* denotes IA resource							
AMBO 1 (E-3 Fireline Medics) staged at DP-40 and available for all Divisions							
Communication Summary							
See Communication Plan							
Prepared By: Rick Lancaster - RESL				Signature: 		129 Personnel	

DIVISION/GROUP ASSIGNMENTS							
Grouse Fire				Branch		Division	
Operational Period						Mike	
8/10/24	0600	8/10/24	2000				
Operations Personnel:							
Operations Chief (Plans)		Troy Mueller; Joe Duran (T)		Division/Group Supervisor		Chris Rokosh; Zach Valentiner (T)	
Operations Chief (Field)		Brandon "Bones" Bonenberger; Ryan Sharpe (T)		Air Attack Supervisor			
Safety Officer		Alison Robb; Jason Miller		Medical Unit Leader		Joel Simonson	
RO #	Item Code	Resource	LWD	Leader Name	# Person	Report Time/Place	Report Time/Place
O-133	TFLD		8/18	Ryan Hennager	1	ICP/0600	ICP/2000
O-144	TFLD(T)		8/19	Chris Hericks	1	ICP/0600	ICP/2000
C-13	CRW1	Bitterroot IHC	8/11	Cache Gibbons	20	ICP/0600	ICP/2000
*E-57	ENG6	Cahoon Contracting	8/19	Randy Mattson	3	ICP/0600	ICP/2000
O-119	HEQB		8/19	Ryan Williams	1	ICP/0600	ICP/2000
O-124	HEQB(T)		8/20	Joel Wealton	1	ICP/0600	ICP/2000
C-10.2	HEQB		8/21	Jacob Durham	1	ICP/0600	ICP/2000
E-61	FEL1	DS JR Trucking, Inc.	8/19	Clint Schwalm	2	ICP/0600	ICP/2000
E-62	FEL1	DS JR Trucking, Inc.	8/19	Dave Sheets	2	ICP/0600	ICP/2000
E-82	SKD1	DS JR Trucking, Inc.	8/21	Al Noack	2	ICP/0600	ICP/2000
E-83	SKD1	DS JR Trucking, Inc.	8/21	Rick Beeman	1	ICP/0600	ICP/2000
E-63	LOGL	Akre Logging	8/20	Leon MacDonnald	2	ICP/0600	ICP/2000
E-67	LOGL	Akre Logging	8/21	Dean Akre	1	ICP/0600	ICP/2000
E-80	LOGL	John Jump Trucking	8/21	Ricky Zao	2	ICP/0600	ICP/2000
E-64	LOG	Akre Logging	8/20	Kirk Randolph	1	ICP/0600	ICP/2000
E-65	LOG	Akre Logging	8/20	Brandon Clary	1	ICP/0600	ICP/2000
E-66	LOG	Akre Logging	8/20	Sam Wylie	1	ICP/0600	ICP/2000
E-108	EXC2	Grizzley Timber, LLC	8/21	Carissa Jenkins	2	ICP/0600	ICP/2000
O-135	THSP		8/19	Sam Hodge	1	ICP/0600	ICP/2000
O-154	THSP		8/12	Russ Walker	1	ICP/0600	ICP/2000
O-59	EMPF	Medic 3	8/18	John Baker	1	ICP/0600	ICP/2000
Work Assignments:							
END STATE: Fuels have been treated and thinned along the Pioneer Mountain Scenic Byway, to increase the probability of success in using the road as a holding feature.							
PURPOSE: Keep fire west of the Pioneer Mountain Scenic Byway, and protect the identified values at risk along the corridor.							
TASK: Prep and improve the Pioneer Mountain Scenic Byway between the Harriet Lou Creek Road and the Division A/M break. Reduce the fuel load using approved specifications and techniques approved by the local Forest. Implement the necessary traffic control measures to provide for the safety of firefighters and the public while operating on or near the roadway.							
Special Instructions:							
* denotes IA resource							
AMBO 1 (E-3 Fireline Medics) staged at DP-40 and available for all Divisions							
Division Mike Road Guards: Bradley Davis, John Richardson, Kevin Albrecht							
Communication Summary							
See Communication Plan							
Prepared By: Rick Lancaster - RESL				Signature: 		50 Personnel	

DIVISION/GROUP ASSIGNMENTS							
Grouse Fire				Branch		Division	
						Staging	
Operational Period							
8/10/24	0600	8/10/24	2000				
Operations Personnel:							
Operations Chief (Plans)		Troy Mueller; Joe Duran (T)		Division/Group Supervisor			
Operations Chief (Field)		Brandon "Bones" Bonenberger; Ryan Sharpe (T)		Air Attack Supervisor			
Safety Officer		Alison Robb; Jason Miller		Medical Unit Leader		Joel Simonson	
RO #	Item Code	Resource	LWD	Leader Name	# Person	Report Time/Place	Report Time/Place
E-43	DOZ3	C&C Stacking	8/16	Craig Cornell	2	DP40/0600	ICP/2000
E-94	EXC2	Blacktail Fire	8/21		2	Staging/0600	ICP/2000
E-108	EXC2	Grizzley Timber, LLC	8/21	Carissa Jenkins	2	Staging/0600	ICP/2000
E-84	FEL1	DS JR Trucking, Inc.	8/21	Not Listed	1	DP40/0600	ICP/2000
Work Assignments: END STATE: Provide incident support. PURPOSE: Respond as needed. TASK: Maintain operational readiness.							
Special Instructions: AMBO 1 (E-3 Fireline Medics) staged at DP-40 and available for all Divisions							
Communication Summary							
See Communication Plan							
Prepared By: Rick Lancaster - RESL				Signature: 		7 Personnel	

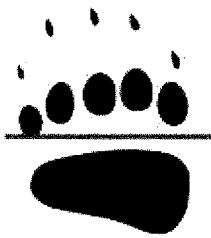
CONTROLLED UNCLASSIFIED INFORMATION//BASIC (CUI)

INCIDENT RADIO COMMUNICATIONS PLAN		1. INCIDENT NAME		2. DATE/TIME PREPARED		3. OPERATIONAL PERIOD DATE/TIME		
ICS-205		Grouse Fire		08-09-2024 1300		08-10-2024 0600-2000		
4. BASIC RADIO CHANNEL UTILIZATION								
Ch #	Channel Name	Assignment	RX Frequency	RX Tone/NAC	TX Frequency	TX Tone/NAC	Mode Digital (D) Analog (A)	Remarks
1	CMD1	Not Installed	170.0000	162.2	166.6750	162.2	A	Sheep Mountain
2	CMD2	Not Installed	170.6875	162.2	166.5750	162.2	A	Stine Mountain
3	FS RPT		173.0875	167.9	165.7250	167.9	A	Odell FS Repeater
4	FS DIR		173.0875	0.000	173.0875	123.0	A	Big Hole Direct
5	VPOND PK	Dillon Dispatch	173.0875	0.000	165.7250	103.5	A	FS Vipond Park
6	R1SOARPT	Tactical RPT	173.1875	136.5	164.3875	136.5	A	FS Scene Of Action (SOA) RPT
7	TAC7	DIV A	168.0500	162.2	168.0500	162.2	A	Division A
8	TAC8	DIV M	168.2000	162.2	168.2000	162.2	A	Division M
9	TAC9	DIV W	168.6000	162.2	168.6000	162.2	A	Division W
10	TAC10	DIV Z	166.7250	162.2	166.7250	162.2	A	Division Z
11	TAC11	Structure Group	166.7750	162.2	166.7750	162.2	A	Structure Group
12	TAC12	Unassigned	168.2500	162.2	168.2500	162.2	A	
13	VMED28	Medical	155.3400	0.000	155.3400	156.7	A	Medical/Ambulance
14	A/G PRI	Air to Ground Pri	168.5250	0.000	168.5250	0.000	A	Primary Air to Ground
15	A/G SEC	Air to Ground Sec	169.8125	0.000	169.8125	0.000	A	Secondary Air to Ground
16	AIRGUARD	EMERGENCY USE ONLY	168.6250	0.000	168.6250	110.9	A	EMERGENCY USE ONLY
ICS-205		Dave Miller		Current Clone Version:		080924		ALWAYS POST A HUMAN REPEATER TO RELAY MESSAGES OUT OF AREAS WHERE YOU HAVE INADEQUATE COMMUNICATIONS
Prepared By:		COML(t)		DPH/GPH:		Press & Hold # Key to Check Version		
				P-150/S/KNG/BKR:		Look at Zone Label for Version		

COMMUNICATIONS UNIT 24 hr phone:

208-891-8019

CONTROLLED UNCLASSIFIED INFORMATION//BASIC (CUI)



Grizzly bear

Bear Safety

Lead READ and Forest Archaeologist:

Ayme Swartz 406-560-5250

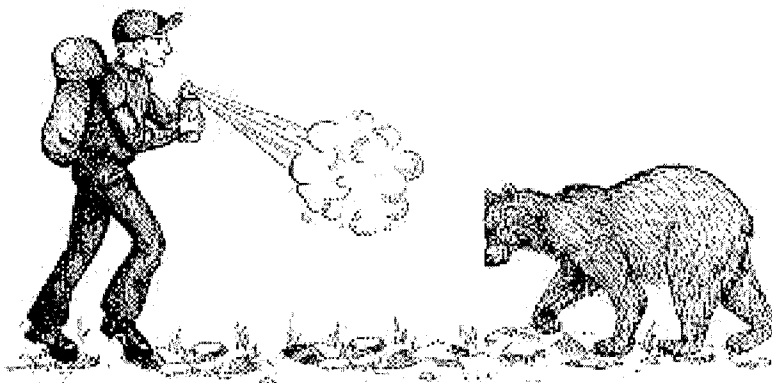
Ayme.swartz@usda.gov



Black bear

- **Store all food, drinks, garbage, and toiletries (including flavored chapstick!)**
 - In a bear proof container such as a locked or bolted bear proof cooler
 - In a vehicle (windows up)
 - DO NOT store in the bed of trucks
 - DO NOT store in regular coolers
 - DO NOT store food in tents at night

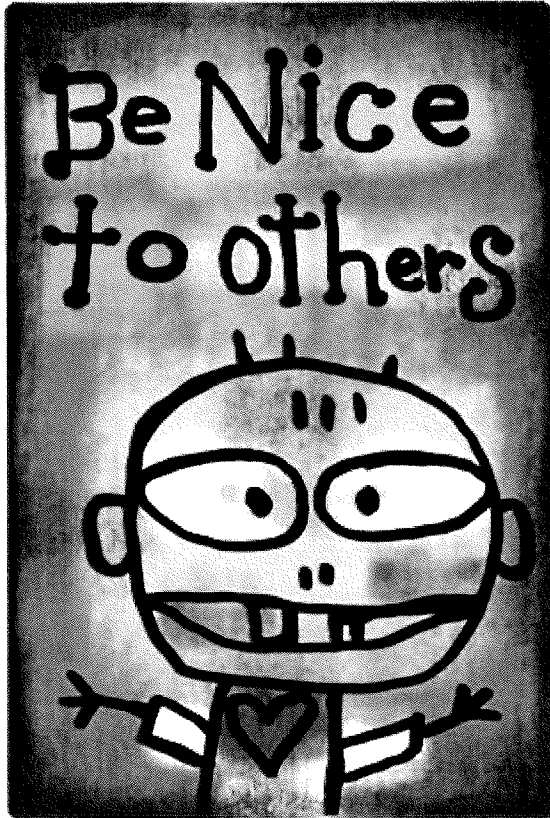
- **Bear spray training available upon request**
 - Know how to use it!
 - In an encounter spray towards the ground at a charging or approaching bear when its 30 feet away.
 - Practice removing the safety
 - Do not leave in direct sunlight
 - Store in tent at night at spike camps





HUMAN RESOURCE MESSAGE

There is zero tolerance for harassment, political activities, alcohol, or federally prohibited substances on this fire incident.



Hello!

I am Debby Hassel and I will be your HRSP on this fire.

If you have any issues, problems, or just want to talk, please call, text, or email me. I will be glad to talk with you!

And remember... ***Be nice to others!***

Debby Hassel, HRSP (979) 255-5513

hrspfire@gmail.com

\$\$\$ GROUSE FINANCE PROCEDURES \$\$\$

Finance email: 2024.grouse.finance@firenet.gov

Finance Phone Numbers

Time (Personnel and Equipment): 208-914-1873

Comp/Claims: 208-891-6348

Finance check-in: Please email electronic copies of the following documents as applicable:

- Contract/Agreement/State Cooperative Agreement
- Casual Hire Form
- Resource Order
- Crew Manifest
- Travel CTRs and Shift Tickets

Submitting Time: Please email completed CTRs and/or Shift Tickets signed by immediate supervisor **every 2 days, after submitting travel time**. Include Resource Order Number in the subject line.

- Electronic CTRs and Shift Tickets are available through the QR code on the IAP cover.
- A **legible photo** is acceptable.

****** All time must include required justifications for hazard pay, compensable meal breaks, or excess hours. Don't forget name, RO# and date. **Include a valid phone # and email.**

Finance demob: Please **Email or call** Finance to notify them that you are demobing.

- Provide email and phone number on **final** CTR and/or Shift Ticket.
- Email electronic copies of your final CTRs and Shift Tickets, including travel time. Include in the email they are final documents for the incident.
- Finance will email final time documents (including OF-288/286) electronically for review and signatures.

Medical

Please work directly with the **Medical Unit Leader**. The MEDL will work with Finance to ensure forms are available and completed.

Damages or Claims

Do not wait until day of demob. An electronic OF-289, *Property Loss or Damage Report*, is available through the QR Code on the IAP cover. Contact Comp/Claims (or FSC) with questions. Include witness statements, signatures and **your contact info**.

DEMOB TIPS

Airline Flights

Contact DEMOB early to arrange your flight home. It can take up to 72 hours to process.

Weedwash

All vehicles that leave the pavement must go through the weed wash located at the junction of highways 43 and 73 at the H-J.

Crew Swaps & Extensions

All crew swaps and extension requests must be initiated through your fire supervisor at least 72 hours prior to your scheduled demobilization and submitted through your respective section chief.

Demob Steps

1. Return all supplies, radios, etc. that were checked out.
2. Submit time for all personnel and equipment to finance.
3. All vehicles that have been to the fireline must go through a car/weed wash.
4. Receive a copy of your OF-288 and/or other financial documentation from Finance.
5. Complete the Demob Checkout Sheet using the QR Code located on the IAP
6. Once you submit the Demob Checkout Sheet you are released and may travel home.

Contact Demob

If you have demob, airline, flight, extensions, or crew swap questions you can contact demob at 605.381.2521 or 2024.grouse.demob@firenet.gov

Safe Travels!

DEMOB LIST

DEMOB 8/10/2024		
Request #	Item Code	Resource Name
O-142.18	COMT	MILLER, DAVE
O-142.45	COMT	SWEDHIN, PAUL HANS
O-142.59	PIOC	ABRAHAMSON, KATHRYN

DEMOB 8/11/2024		
Request #	Item Code	Resource Name
E-9	SKG1	SPENCER LOGGING LLC - 14781
O-79	BCMG	ABERLE, TOBY JOHN
O-80	BCMG	BROCH, DAVID W
O-81	FACL	KIMPLING, PAUL MYCHAL
O-142.35	TNSP	WENDY FISCHER
O-142.37	GISS	EMMA VIKILI
O-142.50	PSCC(T)	DEVIN HAYNIE

DEMOB 8/12/2024		
Request #	Item Code	Resource Name
E-7	FUT2	HART VENTURES INC - 101979
O-17	TFLD	BURKE, EVAN W
O-142.24	RESL	JUSTIN FORKENSI

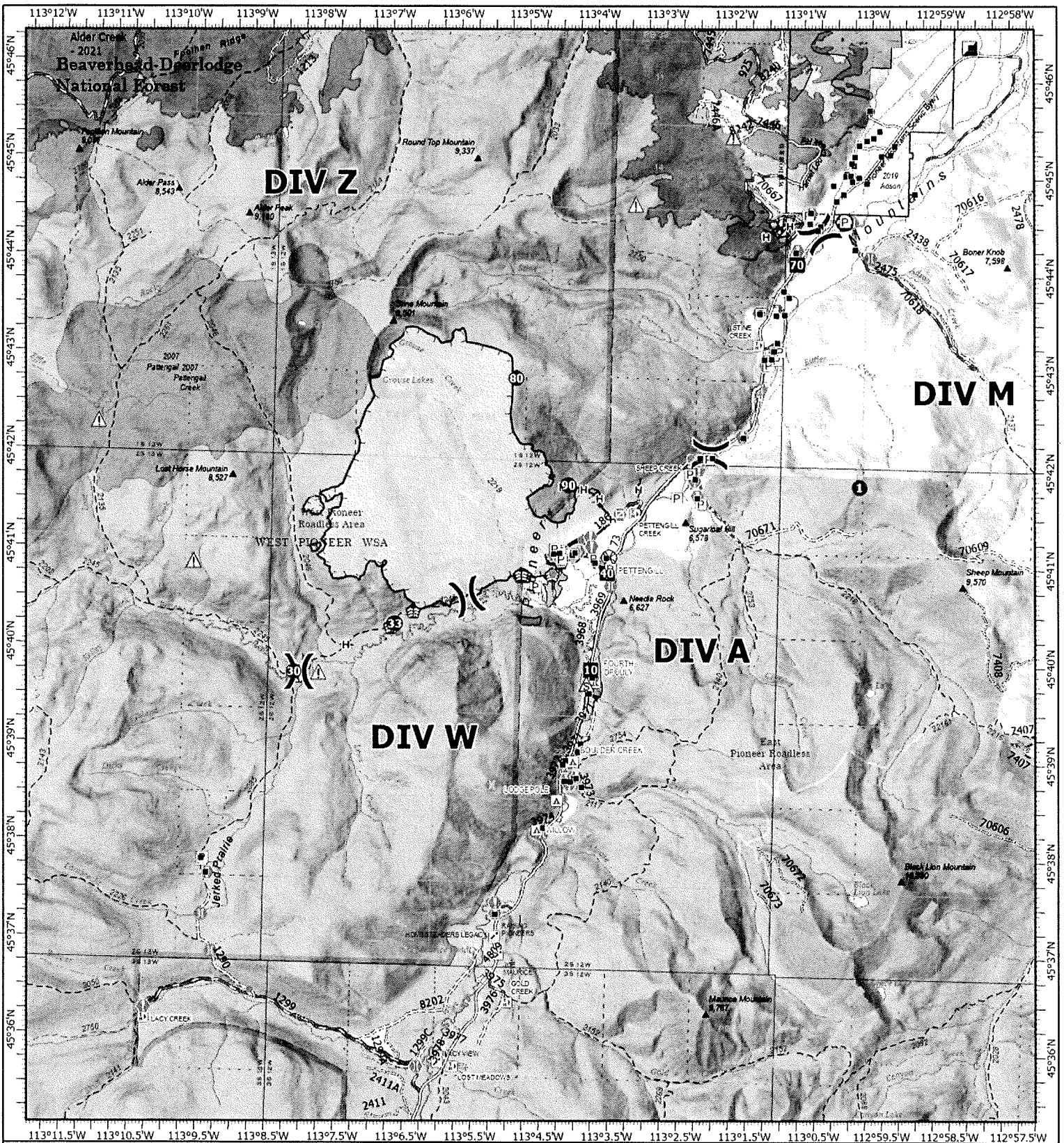
Training Specialist (TNSP) Message/Training Process

Trainees – have you checked-in?

Just a reminder that if you are a trainee, single resource and above, the TNSP is tracking your assignment to provide documentation back to the home unit along with final training incident reports to the IMT and GACC's.

The TNSP is available to answer questions and/or help guide both the Trainee and Evaluator through the process. For more information on position task books visit, www.nwcg.gov/training/nwcg-position-task-books

Trainee Process	Notes	What to do
Check In	Complete the Trainee Check In Form	QR code on front of the IAP – Link Tree Complete “Trainee Check-In Form”
Training Assignment	Taking ownership. Identify tasks and learning opportunities.	Visit with your evaluator
PTB Evaluation Record	Make sure to receive a completed, legible evaluation record and Incident Personnel Performance Rating (ICS 225). Incomplete or incorrect information can delay certification.	Review evaluation records and send copies of the following items to the TNSP via email or text message. <ul style="list-style-type: none"> • Evaluation Record • Incident Personnel Performance Rating (ICS 225) • Task Book
Close Out	Schedule and “Exit Interview” with TNSP	QR code on front of the IAP – Link Tree Complete “Trainee Exit Interview” Or call TNSP to discuss
Incident Training Specialist	Wendy Fischer	wendy_fischer@firenet.gov (970)759-9610



IAP

Grouse
 MT-BDF-246327
 08/10/2024 Day

4149 acres at 08/08/2024 @ 1542 MDT

0 0.250.5 1 1.5 2

Miles

1:100,000 | RM: GIBT 31 8/9/2024 1810

Acres from IR

North American 1983 Datum Lat/Long Grid



Wildfire Daily Fire Perimeter	Drop Point	Road, Paved
Contained	Value at Risk	Road, Dirt/Gravel
Uncontained	Other	Road, high clearance
Structure	Gate	FS Closed Road
Completed Fuel Break	Bridge	Infrastructure Bridge EDW Deck Type
Completed Hand Line	Stream Crossing	USFS Roadless Areas
Access Route	Road Repair	FS Wilderness Study Area Boundary
Other	Culvert	Forest Service Land
Temporary Flight Restriction	Safety Zone	Bureau of Land Management Lands
Helispot	Hazard	Interagency Fire Perimeter History Since 2004
UAS Launch and Recovery	Draft Site	Interagency Fuels Treatments
Division Break	Road	Alder Creek 2021
Incident Command Post	Road, Dirt/Gravel	



Current Maps

First source of supply is Cache, shaded blocks indicate items available thru Northern Rockies Cache. Items requiring an approved Property Loss and Damage form are in a separate list at the bottom.												
PART	034/341	360/MS560	MS361	MS362	038/381	044/MS440	MS441	460/MS461	MS462	0640/650	MS560	MS580
Spark Plug (NFES# 000344)	Bosch WSR6F NGK BPMR7A Champion RC16Y	Bosch WSR6F NGK BPMR7A Champion RC16Y	Bosch WSR6F NGK BPMR7A Champion RC16Y	Bosch WSR6F NGK BPMR7A Champion RC16Y	Bosch WSR6F NGK BPMR7A Champion RC16Y	Bosch WSR6F NGK BPMR7A Champion RC16Y	Bosch WSR6F NGK BPMR7A Champion RC16Y	Bosch WSR6F NGK BPMR7A Champion RC16Y	Bosch WSR7AC NGK CVR6H	Bosch WSR6F NGK BPMR7A Champion RC16Y	Bosch WSR6F NGK BPMR7A Champion RC16Y	Bosch WSR6F NGK BPMR7A Champion RC16Y
Needle Cage Bearing (NFES# 066565)	9512-933-2380 0000-958-1022 9460-624-0801	9512-933-2380 0000-958-1022 9460-624-0801	9512-933-2380 0000-958-1032 9460-624-0801	9512-933-2380 0000-958-1032 9460-624-0801	9512-933-2380 0000-958-1231 9460-624-1001	9512-933-2380 0000-958-1032 9460-624-0801	9512-933-2380 0000-958-1032 9460-624-0801	9512-933-2380 0000-958-1032 9460-624-0801	9512-933-2380 0000-958-1032 9460-624-0801	9512-933-2382 0000-958-1032 9460-624-0801	9512-933-2382 0000-958-1032 9460-624-0801	9512-933-2382 0000-958-1032 9460-624-0801
Retaining Washer for Rim Sprocket E Clip (NFES# 066517)	0000-350-3504	0000-350-3504	0000-350-3504	0000-350-3504	0000-350-3504	0000-350-3504	0000-350-3504	0000-350-3504	0000-350-3504	0000-350-3504	0000-350-3504	0000-350-3504
Fuel Filter	1125-120-1626	1125-120-1612	1135-120-1600	1140-140-4401	1119-120-1611	0000-140-4402	0000-120-1654	0000-120-1654	1142-140-4402	0000-140-4402	0000-140-4402	0000-140-4402
Air Filter - HD (NFES# 066756)	N/A	N/A	N/A	N/A	1119-120-1500	0000-141-0300	0000-141-0300	0000-141-0300	N/A	0000-141-0300	0000-141-0300	0000-141-0300
Pre Filter - OEM	0000-955-0801	0000-955-0801	0000-955-0801	0000-955-0801	0000-955-0801	0000-955-0801	0000-955-0801	0000-955-0801	0000-995-0803	0000-955-0801	0000-955-0801	0000-955-0903
Bar Nut (NFES# 066661)	1122-664-1000	1122-664-1000	1122-664-1000	1122-664-1000	1119-664-1000	1128-664-1001	1138-664-1000	1128-664-1001	1128-664-1001	1128-664-1001	1128-664-1001	1124-664-1001
Inner Slide Plate												
STIHL RAPID - Super (RS)												
Chain 3/8" PITCH - .050" GA - DR	3623-005-0072	3623-005-0072	3623-005-0072	3623-005-0072	3623-005-0084	3623-005-0084	3623-005-0084	3623-005-0072	3623-005-0072	3623-005-0072	3623-005-0072	3623-005-0072
20" - 72 DR	N/A	N/A	N/A	N/A	N/A	N/A	N/A	N/A	N/A	N/A	N/A	N/A
25" - 84 DR (NFES# 006500)	3676-005-0084	3676-005-0084	3676-005-0084	3676-005-0084	3676-005-0084	3676-005-0084	3676-005-0084	3676-005-0084	3676-005-0084	3676-005-0084	3676-005-0084	3676-005-0084
28" - 91 DR	3676-005-0091	3676-005-0091	3676-005-0091	3676-005-0091	3676-005-0091	3676-005-0091	3676-005-0091	3676-005-0091	3676-005-0091	3676-005-0091	3676-005-0091	3676-005-0091
32" - 105 DR	N/A	N/A	N/A	N/A	N/A	N/A	N/A	N/A	N/A	N/A	N/A	N/A
STIHL RAPID - Super - Full Skip (RSF)												
Chain 3/8" PITCH - .050" GA - DR	3676-005-0072	3676-005-0072	3676-005-0072	3676-005-0072	3676-005-0072	3676-005-0072	3676-005-0072	3676-005-0072	3676-005-0072	3676-005-0072	3676-005-0072	3676-005-0072
20" - 72 DR	N/A	N/A	N/A	N/A	N/A	N/A	N/A	N/A	N/A	N/A	N/A	N/A
25" - 84 DR	3676-005-0084	3676-005-0084	3676-005-0084	3676-005-0084	3676-005-0084	3676-005-0084	3676-005-0084	3676-005-0084	3676-005-0084	3676-005-0084	3676-005-0084	3676-005-0084
28" - 91 DR	3676-005-0091	3676-005-0091	3676-005-0091	3676-005-0091	3676-005-0091	3676-005-0091	3676-005-0091	3676-005-0091	3676-005-0091	3676-005-0091	3676-005-0091	3676-005-0091
32" - 105 DR	N/A	N/A	N/A	N/A	N/A	N/A	N/A	N/A	N/A	N/A	N/A	N/A
Bar Oil: Quantity - Gallon	NFES # 1880											
Bar Oil: Quantity - Quart	NFES # 1869											
2 Cycle Oil: Quantity - Quart	NFES # 0341											

The following parts require an approved Property Loss & Damage form prior to ordering:

Guide Bars - 3/8" - .050" GA (STIHL ROLLOMATIC - ES)												
20"	3003-000-8822	3003-000-8822	3003-000-8822	3003-000-8822	3003-000-8822	3003-000-8822	3003-000-8822	3003-000-8822	3003-000-8822	3003-000-8822	3003-000-8822	3003-000-8822
25" (NFES# 066584)	N/A	3003-000-8830	3003-000-8830	3003-000-8830	N/A	3003-000-8830	3003-000-8830	3003-000-8830	3003-000-8830	3003-000-8830	3003-000-8830	3003-000-8830
28"	N/A	N/A	N/A	N/A	N/A	3003-000-8838	3003-000-8838	3003-000-8838	3003-000-8838	3003-000-8838	3003-000-8838	3003-000-8838
32"	N/A	N/A	N/A	N/A	N/A	3003-000-8846	3003-000-8846	3003-000-8846	3003-000-8846	3003-000-8846	3003-000-8846	3003-000-8846
Rim Sprocket Kit 3/8 - 7T	1125-007-1040	1125-007-1223	1128-007-1000	1135-007-1002	1119-007-1003	1128-007-1000	1128-007-1000	1128-007-1017	1128-007-1000	1122-007-1000	1122-007-1000	N/A
Clutch Drum	Order Sprocket Kit	Order Sprocket Kit	Order Sprocket Kit	Order Sprocket Kit	Order Sprocket Kit	Order Sprocket Kit	Order Sprocket Kit	Order Sprocket Kit	Order Sprocket Kit	Order Sprocket Kit	Order Sprocket Kit	Order Sprocket Kit
Rim Sprocket 3/8 7T (NFES# 066552)	0000-642-1231	0000-642-1023	0000-642-1223	0000-642-1223	0000-642-1223	0000-642-1223	0000-642-1223	0000-642-1223	0000-642-1223	0000-642-1223	0000-642-1223	N/A
Rim sprocket kit 3/8 - 8T	N/A	N/A	1128-007-1001	1128-007-1001	N/A	1128-007-1001	1128-007-1001	1128-007-1001	1128-007-1001	1122-007-1001	1122-007-1001	1124-007-1025
Clutch Drum	Order Sprocket Kit	Order Sprocket Kit	Order Sprocket Kit	Order Sprocket Kit	Order Sprocket Kit	Order Sprocket Kit	Order Sprocket Kit	Order Sprocket Kit	Order Sprocket Kit	Order Sprocket Kit	Order Sprocket Kit	Order Sprocket Kit
Rim Sprocket 3/8 - 8T	N/A	0000-642-1216	0000-642-1216	0000-642-1216	0000-642-1216	0000-642-1216	0000-642-1216	0000-642-1216	0000-642-1216	0000-642-1216	0000-642-1216	0000-642-1216
Clutch	1127-160-2050	1125-160-2005	1128-160-2004	1138-160-2010	1119-160-2000	1128-160-2000	1138-160-2010	1128-160-2004	1142-160-2000	1122-160-2005	1122-160-2002	1124-160-2005
Chain Adjuster Kit	1125-007-1036	1125-007-1021	1125-007-1021	1125-007-1021	1118-664-1600	1125-007-1021	1125-007-1021	1125-007-1021	1125-007-1021	1125-007-1021	1125-007-1021	1124-007-1008
Bump Strip	1121-648-6610	1121-648-6610	1121-648-6610	1121-648-6610	1120-664-1500	1121-648-6610	1121-648-6610	1121-648-6610	1121-648-6610	1121-648-6610	1121-648-6610	1121-648-6610
Starter Rope W/handle	1128-190-3400	1128-190-3400	1128-190-3400	1128-190-3400	1128-190-3400	1128-190-3400	1128-190-3400	1128-190-3400	1128-190-3400	1128-190-3400	1128-190-3400	1128-190-3400
Worm Gear (Oiler)	1125-640-7110	1125-640-7110	1128-640-7112	1128-640-7112	1119-642-1501	1128-640-7112	1128-640-7112	1128-640-7112	1128-640-7112	1122-640-7105	1122-640-7105	1124-640-7512
Manifold Boot	1125-141-2200	1125-141-2200	1135-141-2200	1140-140-2503	1119-140-2500	1128-141-2204	1138-140-2508	1128-141-2204	1142-141-2200	1122-141-2200	1122-141-2201	1124-141-2202



Medical Plan (206 WF)

ROCKY MOUNTAIN INCIDENT MANAGEMENT

1. Incident / Project Name			2. Operational Period			
Grouse Fire			Date/Time: 8/10/2024 0600-2000			
3. Ambulance Services						
Name	Address	Phone and Emergency Frequency	Advanced Life Support (ALS) YES NO			
A1 Ambulance	Butte, MT	406-490-3130	X (most of the time)			
Anaconda Fire Department (can rendezvous at HWY 569/HWY 43)	Anaconda, MT	406-463-2164	X			
4. Air Ambulance Services						
Name	Phone	Type of Aircraft & Capability				
Lifelight	Order through Dillon Interagency Dispatch	ALS with critical care				
4MA Forest IA	Order through Dillon Interagency Dispatch	Bell 407 HP Litter Capable				
2HX Grouse Fire	Order through Dillon Interagency Dispatch	Bell 429 Hoist Capable				
***** TRAVEL TIME FROM ICP*****						
Name Complete Address	LAT: DD° MM.MMM'N LONG: DD° MM.MMM'W	Travel Time From ICP		Phone	Helipad Yes /No	Level of Care
St Vincent Regional 1233 N 30th St Billings, MT	Lat: 45° 47.658' N	1 hr	4 hrs	406-657-7000	YES	Level 1 Trauma Cardiac & Cath Lab Stroke Center
	Long: 108° 31.003' W					
St Patrick Hospital 500 W Broadway St Missoula, MT	Lat: 46° 52.533' N	45 min	2.25 hrs	406-543-7271	YES	Level 2 Trauma Cardiac & Cath Lab Stroke Center
	Long: 114° 0.001' W					
St James Healthcare 400 S Clark St Butte, MT	Lat: 46° 0.512' N	35 min	45 min	406-723-2585	YES	Level 3 Trauma Cardiac Certified Stroke Certified
	Long: 112° 32.742' W					
Community Hospital of Anaconda 401 W PennsylvaniaST Anaconda, MT	Lat: 46° 7.950' N	35 min	50 min	406-563-8500	YES	Local Emergency Room Only
	Long: 112° 57.427' W					
*Travel times are from Grouse Fire ICP to the facility and DO NOT include response time to the incident.						
6. Division Branch Group						
ALPHA	EMS Responders & Capabilities:		AMBO 1 - Ellis MEDIC TEAM 2 - Perry			
	Equipment Available on Scene:		4x4, UTV, ALS Kit, ALS Ambulance, Oxygen			
	Medical Emergency Channel:		CH 5 VPOND Dillon Disptach		A/G: VMED 28	
MIKE	EMS Responders & Capabilities:		MEDIC 3 - Baker			
	Equipment Available on Scene:		4x4, ALS Kit			
	Medical Emergency Channel:		CH 5 VPOND Dillon Disptach		A/G: VMED 28	
WHISKEY	EMS Responders & Capabilities:		MEDIC 4 - Wallace (Spiked with Kaniksu Mod)			
	Equipment Available on Scene:		4x4, ALS Kit			
	Medical Emergency Channel:		CH 5 VPOND Dillon Disptach		A/G: VMED 28	
ZULU	EMS Responders & Capabilities:		UNSTAFFED			
	Equipment Available on Scene:					
	Medical Emergency Channel:		CH 5 VPOND Dillon Disptach		A/G: VMED 28	
STRUCTURE GRP	EMS Responders & Capabilities:					
	Equipment Available on Scene:					
	Medical Emergency Channel:		CH 5 VPOND Dillon Disptach		A/G: VMED 28	
STAGING	EMS Responders & Capabilities:					
	Equipment Available on Scene:					
	Medical Emergency Channel:		CH 5 VPOND Dillon Disptach		A/G: VMED 28	
8. Prepared by: (Medical Unit Leader)			Date	Reviewed by: (Safety Officer)		Date
/s/ Dan Leone MEDL			8/9/2024	/s/ Jason Miller SOFC		8/9/2024

MEDICAL PLAN (ICS 206 WF)

Controlled Unclassified Information//Basic

Medical Incident Report

FOR A NON-EMERGENCY INCIDENT, WORK THROUGH CHAIN OF COMMAND TO REPORT AND TRANSPORT INJURED PERSONNEL AS NECESSARY.

FOR A MEDICAL EMERGENCY: IDENTIFY ON SCENE INCIDENT COMMANDER BY NAME AND POSITION AND ANNOUNCE "MEDICAL EMERGENCY" TO INITIATE RESPONSE FROM IMT COMMUNICATIONS/DISPATCH.

Use the following items to communicate situation to communications/dispatch.

1. CONTACT COMMUNICATIONS / DISPATCH (Verify correct frequency prior to starting report)

Ex: "Communications, Div. Alpha. Stand-by for Emergency Traffic."

2. INCIDENT STATUS: Provide incident summary (including number of patients) and command structure.

Ex: "Communications, I have a Red priority patient, unconscious, struck by a falling tree. Requesting air ambulance to Forest Road 1 at (Lat./Long.) This will be the Trout Meadow Medical, IC is TFLD Jones. EMT Smith is providing medical care."

Severity of Emergency / Transport Priority	<input type="checkbox"/> RED / PRIORITY 1 Life or limb threatening injury or illness. Evacuation need is IMMEDIATE <i>Ex: Unconscious, difficulty breathing, bleeding severely, 2^o – 3^o burns more than 4 palm sizes, heat stroke, disoriented.</i> <input type="checkbox"/> YELLOW / PRIORITY 2 Serious Injury or illness. Evacuation may be DELAYED if necessary. <i>Ex: Significant trauma, unable to walk, 2^o – 3^o burns not more than 1-3 palm sizes.</i> <input type="checkbox"/> GREEN / PRIORITY 3 Minor Injury or illness. Non-Emergency transport <i>Ex: Sprains, strains, minor heat-related illness.</i>	
Nature of Injury or Illness & Mechanism of Injury		<i>Brief Summary of Injury or Illness (Ex: Unconscious, Struck by Falling Tree)</i>
Transport Request		<i>Air Ambulance / Short Haul/Hoist Ground Ambulance / Other</i>
Patient Location		<i>Descriptive Location & Lat. / Long. (WGS84)</i>
Incident Name		<i>Geographic Name + "Medical" (Ex: Trout Meadow Medical)</i>
On-Scene Incident Commander		<i>Name of on-scene IC of Incident within an Incident (Ex: TFLD Jones)</i>
Patient Care		<i>Name of Care Provider (Ex: EMT Smith)</i>

3. INITIAL PATIENT ASSESSMENT: Complete this section for each patient as applicable (start with the most severe patient)

Patient Assessment: See IRPG page 106

Treatment:

4. TRANSPORT PLAN:

Evacuation Location (if different): (Descriptive Location (drop point, intersection, etc.) or Lat. / Long.) Patient's ETA to Evacuation Location:

Helispot / Extraction Site Size and Hazards:

5. ADDITIONAL RESOURCES / EQUIPMENT NEEDS:

Example: Paramedic/EMT, Crews, Immobilization Devices, AED, Oxygen, Trauma Bag, IV/Fluid(s), Splints, Rope rescue, Wheeled litter, HAZMAT, Extraction

6. COMMUNICATIONS: Identify State Air/Ground EMS Frequencies and Hospital Contacts as applicable

Function	Channel Name/Number	Receive (RX)	Tone/NAC *	Transmit (TX)	Tone/NAC *
COMMAND					
AIR-TO-GRND					
TACTICAL					

7. CONTINGENCY: Considerations: If primary options fail, what actions can be implemented in conjunction with primary evacuation method? Be thinking ahead.

8. ADDITIONAL INFORMATION: Updates/Changes, etc.

REMEMBER: Confirm ETA's of resources ordered. Act according to your level of training. Be Alert. Keep Calm. Think Clearly. Act Decisively.