



Incident Action Plan

Grouse Fire

MT-BDF-246327, P1R4SM24 (0102)

Sunday, August 11, 2024

0600-2000

Safety Starts Here

The Infamous Camp Crud

Dirty August is in full effect and that means that the crud is starting to creep in. In the short time we have been together, we have noticed more coughs and sniffles. With cooler, damper weather and closer confinement we need to be extra diligent in how we handle our hygiene to remain healthy. Please be courteous to those around you and follow some simple guidelines.

- Wash you hand frequently and especially after using the restroom.
- Try to up your intake of Vitamin C to assist with immune response.
- Cough into your elbow to limit spread.
- If you feel Less than 100% limit exposure to others.
- Keep your areas as clean as possible.

This fire season is shaping up to be a marathon and not a sprint so lets try to prepare for the long game.



Incident Commanders
Bill Waln, Phil Daniels
Jay Mickey (T)



Available at this site: Remote Incident Check-in, IAP's, Maps, Finance, Fillable-CTR's, Training, Demob, Shift Tickets and General Messages

INCIDENT OBJECTIVES	1. Incident Name GROUSE FIRE	2. Date Prepared August 10, 2024	3. Time 1530
4. Operational Period: August 11, 2024 Day Operations 0600-2000			
<p>Leaders Intent: It is the Incident Commander's expectation that we as an organization will meet the following leader's intent, as well as the incident objectives identified below:</p> <ul style="list-style-type: none"> • Ensure all incident strategies and actions reflect a commitment to public, responder, and aviation safety through use of an adaptive risk management process as outlined in the IRPG and the aviation risk assessment process. • Treat all incident personnel, cooperators, and local public with dignity and respect, and create a "no tolerance" atmosphere for harassment, alcohol, or illegal drug use. • Respect the integrity of the cultural resources in and adjacent to the incident, coordinating all operational activities with the Forest Archaeologist. <p>Incident Objectives:</p> <ul style="list-style-type: none"> • Continually provide for emergency personnel and public safety through the utilization of a deliberate, risk-informed approach, with avenues for feedback from personnel. • Use a full suppression strategy with a combination of direct, indirect, and point zone protection tactics where reasonable to protect the identified critical values of risk. • Develop contingency plans to identify management actions to be taken if the fire threatens Pioneer Scenic Byway, Jerked Prairie, and/or Highway 43. • Foster and maintain relationships with the public, cooperators, and vested parties. • Ensure coordinated, timely, and accurate release of information to the public and land managers, including the BLM and the Montana DNRC, utilizing the full suite of platforms. • Maintain fiscal accountability by making good risk-informed decisions. 			
8. Attachments (X if attached)			
<input checked="" type="checkbox"/>	Cover / Safety Message	<input checked="" type="checkbox"/>	ICS 203 Organization Assignment List
<input checked="" type="checkbox"/>	Fire Behavior Forecast	<input checked="" type="checkbox"/>	Fire Weather Forecast
<input checked="" type="checkbox"/>	ICS 205 Incident Radio Comm Plan	<input checked="" type="checkbox"/>	ICS 204 Division Assignment Lists
<input checked="" type="checkbox"/>	Human Resource Message	<input checked="" type="checkbox"/>	ICS 220 Air Operations Summary
<input checked="" type="checkbox"/>	Demob List	<input checked="" type="checkbox"/>	Resource Advisor Message
<input checked="" type="checkbox"/>	NR Chainsaw Parts Order Form	<input checked="" type="checkbox"/>	Demob Tips
<input checked="" type="checkbox"/>		<input checked="" type="checkbox"/>	Training Message
<input checked="" type="checkbox"/>		<input checked="" type="checkbox"/>	Incident Map
<input checked="" type="checkbox"/>		<input checked="" type="checkbox"/>	Medical Incident Report – 8 Line
9. Prepared by PSCC PETER BARTH		9. Approved by (Incident Commander) WALN / DANIELS / MICKEY (T)	

Peter Barth

for Mickey

ORGANIZATION ASSIGNMENT LIST

Incident Name		Operations Section		
<h1 style="margin: 0;">Grouse Fire</h1>		Field	Brandon "Bones" Bonenberger, Ryan Sharpe (T)	
		Planning	Troy Mueller, Joe Duran (T)	
		Strategic	Rodney Redinger	
Date Prepared	Time Prepared	<h3 style="margin: 0;">Division/Group</h3>		
8/10/2024	1900			
Operational Period				
8/11/2024 0600 to 8/11/2024 2000				
Incident Commander and Staff		Alpha	DIVS	
Incident Commander	Bill Waln, Jay Mickey (T)	Mike	DIVS	Blake Stewart, Bela Harrington (T)
Deputy	Phil Daniels	Whiskey	DIVS	Chris Rokosh, Zach Valentiner (T)
Safety Officer	Alison Robb, Brandon Hoffman Jason Miller (T), David Day (T)	Zulu	DIVS	Geoff Harrison, Alex Doud (T)
Medical Unit	Dan Leone, Kristina Bastian (T)	Structure	Group	Unstaffed
Liaison Officer	Tim Flanary			Joe Tjaden
Information Officer	Cass Cairns, Lynn Lockwood			
Human Resource Specialist	Debby Hassel (v)			
Agency Representatives		Air Operations Branch		
BDNF	Tim Lahey, Sara Rouse (T)	Air Operation Branch Director		Matt Lingenfelter
BLM	Lindsey Babcock	Air Support Group Supervisor		Randy Gilbert
MT-DNRC	Tim Egan	Air Tactical Group Supervisor		
Resource Advisor	Ayme Swartz	Helibase Manager		
		Finance Section		
		Chief	Kayla Davin	
		Time Unit	Natasha Goedert (T)	
		Cost Unit	Annette Pintado (v)	
		Comp/Claims	Arlene Tucker (T)	
Planning Section				
Chief	Peter Barth, Devin Haynie (T) Kurt Wetzstein (PSC3)			
Resource Unit	Rick Lancaster, Kellie Stover			
Situation Unit	Max Forgensi (T)			
Training Specialist	Wendy Fischer, Carolyn Blatz (T)	Logistics Section		
Check In	Carla Rumsey	Chief	Darin Gehring, Randy Spiering Jamie Rietz (T)	
Meteorologist	Mark Loeffelbein	Facilities Unit	Ish Ennis, Ken Hehr, Paul Kimpling	
Demobilization Unit	Logan Brown	Ground Support Unit	Lee Walker	
Documentation Unit	Spencer Pollock (RIST)	Communications Unit	Walter Warrick, Dave Miller (T)	
IT Specialist	Eric Simmons, Tyler Ward (T)	Supply Unit	Robin Brooks	
Long Term Analyst	Erin Noonan	Food Unit	Wally Leander	
GIS Specialists	Sarlyn McCormick, Chris "Fern" Ferner Jennifer McKee (T)(V)	Security	Dave Tyndell	
		Ordering	Beth Youngstrom, Monty Bollock (T)	

Kellie Stover – RESL



Grouse Weather Forecast



FORECAST NO: 2
FORECAST FOR: Sun, Aug 11, 2024 Day
FORECAST ISSUED: Aug 10, 2024, 1800 MDT

NAME OF FIRE: Grouse
UNIT: Beaverhead-Deerlodge NF
SIGNED: //s// Mark Loeffelbein - IMET

WEATHER DISCUSSION: ...A very active weather pattern will take a break on Sunday as some drier air moves into the area reducing the potential for thunderstorms but also significantly lowering RHs. The atmosphere will remain very unstable which is reflected in the Haines of 5. Winds at ridgetop will be mainly out of the west/southwest with upcanyon flow developing in the larger Wise River drainage. Inversions will break around 1030 but it will take an additional hour to thin the smoke out. RH recoveries will be poor Sunday night in the midslopes and on ridgetops.

FORECAST FOR TODAY: Partly Cloudy (20-40%). 10% Chance of thunderstorms after 1200.

Max Temperature(°F):

(6500 ft.) 67-72 (1-2° Warmer) **Min RH: (6500 ft.)** 18-23% (10-15% Lower)
(8500 ft.) 60-65 (1-2° Warmer) **Min RH: (8500 ft.)** 22-26% (10-15% Lower)

20 FT Winds:

Slope/Valleys: West facing slopes West 4-8 mph after 1030, otherwise calm becoming upslope 3-6 mph after 1030

Wise River Drainage: Up Drainage (Southeast) 4-8 Gusts to 14 mph after 1030.

Ridgetops: West-Southwest 6-10 Gusts to 15 mph.

CWR (0.1"+): 0% **Chance of Lighting:** 10% **LAL:** 2

Inversion: Inversions breaking around 1030. **Haines:** 5 Moderate

OUTLOOK FOR TONIGHT: Mostly Clear (0-10%). Poor RH recoveries.

Min Temperature (°F):

Lower Elev. (6500 ft.) 40-45
Upper Elev. (8500 ft.) 42-47

Max RH:

Lower Elev. 60-65%
Upper Elev. 35-45%

20 FT Winds:

Slope/Valleys: Upslope 3-6 mph until 2200, then downslope 2-4 mph.

Ridgetops: Becoming less than 5 mph after 2200.

CWR (0.1"+): 0% **LAL:** 1 **Haines:** 4 Low


EXTENDED OUTLOOK (6500 ft.):

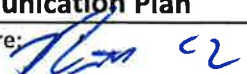
Monday...Partly Cloudy (40-60%). 30% Chance of Thunderstorms in the afternoon. Hazy. High 69-74. RH: 24-29%. Winds: Southwest 8 to 12 Gusts to 20 mph. Haines: 5. CWR (0.1"+): 20%


Tuesday and Wednesday...Partly Cloudy (50-70%). 30% Chance of Thunderstorms in the afternoon. Hazy. High 69-74. RH: 28-33%. Winds: Southwest 9 to 13 Gusts to 25 mph. Haines: 4. CWR (0.1"+): 20-25%

PLEASE submit your weather observations to the IMET.

Snap a picture of your obs and text them to: 801-882-7268

DIVISION/GROUP ASSIGNMENTS							
<h1>Grouse Fire</h1>				Branch		Division	
						<h1>Alpha</h1>	
Operational Period							
8/11/24	0600	8/11/24	2000				
Operations Personnel:							
Operations Chief (Plans)		Troy Mueller; Joe Duran (T)		Division/Group Supervisor		Blake Stewart; Bela Harrington (T)	
Operations Chief (Field)		Brandon "Bones" Bonenberger; Ryan Sharpe (T)		Air Attack Supervisor			
Safety Officer		Alison Robb; Jason Miller (T)		Medical Unit Leader		Dan Leone	
RO #	Item Code	Resource	LWD	Leader Name	# Person	Report Time/Place	Report Time/Place
O-152	TFLD		8/14	Brian Gorwitz	1	ICP/0600	ICP/2000
O-132	TFLD(T)		8/14	Tyson Luicer	1	ICP/0600	ICP/2000
O-129	TFLD(T)		8/19	Donavan Suko	1	ICP/0600	ICP/2000
C-1	CRW1	Bonneville IHC	8/14	Eric Evans	22	ICP/0600	ICP/2000
C-10	CRW1	Flathead IHC	8/14	Shawn Borgen	24	ICP/0600	ICP/2000
*C-11	CR2I	Great Northern	8/19	Chris McMaster	21	ICP/0600	ICP/2000
C-9	CRW2	Lava River	8/14	Felix Trujillo	20	ICP/0600	ICP/2000
E-33	ENG6	C&C Cougar Fire	8/15	Cathy Reilly	3	ICP/0600	ICP/2000
*E-35	ENG6	Castle Mountain	8/15	Cody Welch	3	ICP/0600	ICP/2000
E-53	ENG6	Graywolf	8/20	Jonathan Perez	3	ICP/0600	ICP/2000
E-42	SKG1	RT Logging	8/15	Thompson	2	ICP/0600	ICP/2000
O-166	EMPF	Medic 6	8/24	Trenton Harper	1	ICP/0600	ICP/2000
E-32	EMPF	Medic Team 2	8/11	Kahl Clark	2	ICP/0600	ICP/2000
O-170	REMS	REMS 5	8/24	Ben Lewis	4	ICP/0600	ICP/2000
E-3	AMB2	Fireline Medics (AMBO 1)	8/20	Andrew Ellis	2	ICP/0600	ICP/2000
Work Assignments:							
END STATE: Fireline in the correct location with the right dimensions to contain the fire.							
PURPOSE: Keep fire from impacting values at risk.							
TASK: Construct direct and indirect fireline, and mop up where necessary.							
Special Instructions:							
* denotes IA resource							
AMBO 1 (E-3 Fireline Medics) staged at DP-40 and available for all Divisions							
Communication Summary							
See Communication Plan							
Prepared By: Rick Lancaster - RESL				Signature: 		112 Personnel	

DIVISION/GROUP ASSIGNMENTS							
Grouse Fire				Branch		Division	
				Operational Period		Mike	
8/11/24	0600	8/11/24	2000				
Operations Personnel:							
Operations Chief (Plans)		Troy Mueller; Joe Duran (T)		Division/Group Supervisor		Chris Rokosh; Zach Valentiner (T)	
Operations Chief (Field)		Brandon "Bones" Bonenberger; Ryan Sharpe (T)		Air Attack Supervisor			
Safety Officer		Alison Robb; Jason Miller (T)		Medical Unit Leader		Dan Leone	
RO #	Item Code	Resource	LWD	Leader Name	# Person	Report Time/Place	Report Time/Place
O-133	TFLD		8/18	Ryan Hennager	1	ICP/0600	ICP/2000
O-144	TFLD(T)		8/19	Chris Hericks	1	ICP/0600	ICP/2000
C-13	CRW1	Bitterroot IHC	8/11	Cache Gibbons	20	ICP/0600	ICP/2000
*E-57	ENG6	Cahoon Contracting	8/19	Randy Mattson	3	ICP/0600	ICP/2000
O-119	HEQB		8/19	Ryan Williams	1	ICP/0600	ICP/2000
O-124	HEQB(T)		8/20	Joel Wealton	1	ICP/0600	ICP/2000
C-10.26	HEQB		8/21	Jacob Durham	1	ICP/0600	ICP/2000
C-11.1	HEQB(T)		8/19	Brian Buckley	1	ICP/0600	ICP/2000
E-61	FEL1	DS JR Trucking, Inc.	8/19	Clint Schwalm	2	ICP/0600	ICP/2000
E-62	FEL1	DS JR Trucking, Inc.	8/19	Dave Sheets	2	ICP/0600	ICP/2000
E-84	FEL1	DS JR Trucking, Inc.	8/21		1	ICP/0600	ICP/2000
E-82	SKD1	DS JR Trucking, Inc.	8/21	Al Noack	2	ICP/0600	ICP/2000
E-83	SKD1	DS JR Trucking, Inc.	8/21	Rick Beeman	1	ICP/0600	ICP/2000
E-67	LOGL	Akre Logging	8/21	Dean Akre	1	ICP/0600	ICP/2000
E-80	LOGL	John Jump Trucking	8/21	Ricky Zao	2	ICP/0600	ICP/2000
E-64	LOG	Akre Logging	8/20	Kirk Randolph	1	ICP/0600	ICP/2000
E-65	LOG	Akre Logging	8/20	Brandon Clary	1	ICP/0600	ICP/2000
E-66	LOG	Akre Logging	8/20	Sam Wylie	1	ICP/0600	ICP/2000
E-108	EXC2	Grizzley Timber, LLC	8/21	Carissa Jenkins	2	ICP/0600	ICP/2000
O-135	THSP		8/19	Sam Hodge	1	ICP/0600	ICP/2000
O-154	THSP		8/12	Russ Walker	1	ICP/0600	ICP/2000
O-59	EMPF	Medic 3	8/18	John Baker	1	ICP/0600	ICP/2000
Work Assignments:							
END STATE: Fuels have been treated and thinned along the Pioneer Mountain Scenic Byway, to increase the probability of success in using the road as a holding feature.							
PURPOSE: Keep fire west of the Pioneer Mountain Scenic Byway, and protect the identified values at risk along the corridor.							
TASK: Prep and improve the Pioneer Mountain Scenic Byway between the Harriet Lou Creek Road and the Division A/M break. Reduce the fuel load using approved specifications and techniques approved by the local Forest. Implement the necessary traffic control measures to provide for the safety of firefighters and the public while operating on or near the roadway.							
Work Assignments:							
END STATE: Processed logs and slash from fuels treatments are moved and relocated to designated areas away from the Pioneer Mountain Scenic Byway in accordance with local Forest's request.							
PURPOSE: To remove and reduce potential fuel loading on the fire's side of the Pioneer Mountain Scenic Byway, while maintaining the natural view of the Forest for visitor's and local residents.							
TASK: Load processed logs and slash onto the appropriate transport vehicles and safely deliver the materials to the designated drop points. Processed logs to DP 50 and slash to DP 60.							
Special Instructions:							
* denotes IA resource							
AMBO 1 (E-3 Fireline Medics) staged at DP-40 and available for all Divisions							
Division Mike Road Guards: Bradley Davis, John Richardson, Kevin Albrecht							
Communication Summary							
See Communication Plan							
Prepared By: Rick Lancaster - RESL			Signature: 			50 Personnel	

DIVISION/GROUP ASSIGNMENTS							
Grouse Fire				Branch		Division	
						Whiskey	
Operational Period							
8/11/24	0600	8/11/24	2000				
Operations Personnel:							
Operations Chief (Plans)		Troy Mueller; Joe Duran (T)		Division/Group Supervisor		Geoff Harrison; Alex Doud (T)	
Operations Chief (Field)		Brandon "Bones" Bonenberger; Ryan Sharpe (T)		Air Attack Supervisor			
Safety Officer		Alison Robb; Jason Miller (T)		Medical Unit Leader		Dan Leone	
RO #	Item Code	Resource	LWD	Leader Name	# Person	Report Time/Place	Report Time/Place
O-143	TFLD		8/20	Rob Dunn	1	ICP/0600	ICP/2000
E-52.1	TFLD(T)		8/18	Matt Larsen	1	ICP/0600	ICP/2000
C-12	CR2I	Grayback Forestry 2B	8/19	Doc Dougherty	20	ICP/0600	ICP/2000
C-7	CRW2	West Coast Reforestation	8/14	Bejamin Martinez	20	ICP/0600	ICP/2000
O-115	WFM2	Kaniksu WFM	8/19	Sam Castaldo	12	ICP/0600	ICP/2000
E-52	ENG6	MT-BDF E671	8/18	Molly Chiappetta	9	ICP/0600	ICP/2000
O-56	FMOD	Miller Creek	8/16	Pete Clifford	2	ICP/0600	ICP/2000
O-58	EMPF	Medic 4	8/17	Becca Wallace	1	ICP/0600	ICP/2000
Work Assignments:							
END STATE: Fire stays North of Trail 2245 and East of Trail 2046.							
PURPOSE: To secure Southwest corner of the fire to protect Jerked Prairie.							
TASK: Prep Trail 2245 and Trail 2046 and scout for firing opportunities.							
Special Instructions:							
AMBO 1 (E-3 Fireline Medics) staged at DP-40 and available for all Divisions							
Communication Summary							
See Communication Plan							
Prepared By: Rick Lancaster - RESL				Signature: 		68 Personnel	

DIVISION/GROUP ASSIGNMENTS

Grouse Fire				Branch	Division
					Zulu
Operational Period					
8/11/24	0600	8/11/24	2000		

Operations Personnel:

Operations Chief (Plans)	Troy Mueller; Joe Duran (T)	Division/Group Supervisor	
Operations Chief (Field)	Brandon "Bones" Bonenberger; Ryan Sharpe (T)	Air Attack Supervisor	
Safety Officer	Alison Robb; Jason Miller (T)	Medical Unit Leader	Dan Leone

RO #	Item Code	Resource	LWD	Leader Name	# Person	Report Time/Place	Report Time/Place

Work Assignments:


UNSTAFFED

Special Instructions:

Communication Summary

See Communication Plan

Prepared By: Rick Lancaster - RESL	Signature: 	Personnel
------------------------------------	--	-----------

DIVISION/GROUP ASSIGNMENTS								
Grouse Fire				Branch		Division		
						Structure		
Operational Period								
8/11/24		0600		8/11/24		2000		
Operations Personnel:								
Operations Chief (Plans)			Troy Mueller; Joe Duran (T)		Division/Group Supervisor		Joe Tjaden	
Operations Chief (Field)			Brandon "Bones" Bonenberger; Ryan Sharpe (T)		Air Attack Supervisor			
Safety Officer			Alison Robb; Jason Miller (T)		Medical Unit Leader		Dan Leone	
RO #	Item Code	Resource	LWD	Leader Name	# Person	Report Time/Place	Report Time/Place	
O-71	TFLD		8/16	Mike Gustafson	1	ICP/0600	ICP/2000	
*O-142.6	TFLD(T)		8/17	Roy Kottwitz	1	ICP/0600	ICP/2000	
O-17	TFLD(T)		8/11	Evan Burke	1	ICP/0600	ICP/2000	
O-72	TFLD(T)		8/16	Fernando Quiroga	1	ICP/0600	ICP/2000	
E-2	ENG6	Graywolf	8/13	Lee Grant	3	ICP/0600	ICP/2000	
E-36	ENG6	Robert Bakken	8/15	Robert Bakken	3	ICP/0600	ICP/2000	
E-37	ENG6	Whitegrass Fire	8/16	Cliff Whitegrass	3	ICP/0600	ICP/2000	
E-69	ENG6	MT-CES E1315	8/23	Nik Russell	3	ICP/0600	ICP/2000	
E-70	ENG6	Mountain Man	8/20	Brent Leyva	3	ICP/0600	ICP/2000	
*E-43	DOZ3	C&C Stacking	8/15	Craig Cornell	2	ICP/0600	ICP/2000	
E-13	WTS2	Blacktail Fire	8/24	Russ Sigman	1	ICP/0600	ICP/2000	
Work Assignments:								
END STATE: All structures and identified values have been assessed, cataloged and documented for placement of resources in response to current and future fire events.								
PURPOSE: To provide direction in placement of resources at all structures and identified values which are threatened by definition of management points.								
TASK: Document, catalog and test the layout of resources and equipment required for structure defense.								
Special Instructions:								
* denotes IA Resource								
AMBO 1 (E-3 Fireline Medics) staged at DP-40 and available for all Divisions								
Communication Summary								
See Communication Plan								
Prepared By: Rick Lancaster - RESL				Signature: 			23 Personnel	

AIR OPERATIONS SUMMARY		Prepared By:	Randy Gilbert	Prepared Date:	8/10/2024	Prepared Time:	19:00
1. INCIDENT NAME: Grouse		2. Operational Date: August 11, 2024		Start Time: 0800		3. Butte Sunset: 20:46 Butte Pumpkin: 21:16	
4. Remarks Safety Notes, Hazards, Air ops Mission plan for density altitude (DA) and windy conditions Report any unauthorized/UAS activity Wash bucket, if moving between dipsites over Contentail Divide. Offer constructive feedback to pilots during tactical operations Status current at time of report. Changes occur constantly.		5. Medevac Aircraft: Order through dispatch Life Flight ALS KBTM 800-232-0911 4MA Litter Capable WR Helibase 8MG CMH Short Haul HRF				6. TFRs: 4/9355 Grouse 11500' MSL 120.100 4/2588 Johnson 12000' MSL 118.725 (BRF) 4/1257 Hughes 13000' MSL 119.575 (BRF)	
7. Personnel:		8. Frequencies:		FM		9. Fixed-Wing GACC:	
AOBD	Matt Lingenfelter	Phone #	970-803-4617	Nat. Flight Follow	168.6500 Rx/Tx Tn 110.9	Air Tankers/SEATS: Order through dispatch	
ASGS(T)	Randy Gilbert		406-925-3779				
HEBM (T)	Matt Esser		605-517-1505	Grouse A/G Primary	168.5250		
Dillon Dispatch	Aircraft Desk		406-683-3939	Grouse A/G Secondary	169.8125		
				Grouse A/A TFR	120.100	Lead Plane/ASM: Order through dispatch	
				Grouse A/A Rotor	124.600		
				IA A/G 29	166.9000		
				IA A/G 26	166.6875		
4MA	Nick Plovnic		406-366-0179	IA A/A Primary	119.625	Air Attack: Order through dispatch	
				IA A/A Secondary	134.150		
5GE	Rich Reneau		406-493-5799	VMED 28 (TAN)	155.340 Tx Tn 156.7	Helicopters GACC: Order through dispatch	
				Medical WHITE	155.280 Tx Tn 156.7	T1 Avail GACC Lend/Lease	
1HT	Joel Anderson		208-413-1602				
2AC	Jerrid Silva		406-381-5963	DNRC A/G Yellow	151.2200		
0PJ	Ricky Cox		601-527-7360	DNRC A/G Orange	151.4000		
2HX	Josh Quinn		352-933-1613			SMJK GACC: Order through dispatch	
HELICOPTERS/UAS							
FAA N#	Call Sign	Make/Model	Type	Base	Available	Remarks	
N144MA	4MA	Bell 407HP	3	WRH	830	Committed Forest IA	
N52HX	2HX	Bell 429	3	KBTM	830	Grouse	
N205GE	5GE	UH-1H	2	KBTM	930	Restricted/Committed Forest IA	
N721HT	1HT	S-64	1	KBTM	930	Grouse/Tanked	
N172AC	2AC	S-64	1	KBTM	930	Grouse/Tanked	
N810PJ	0PJ	UH-60A	1	KBTM	930	NRGA Support/Bucket	
UAS T3	UR-32	Alta X	3	Grouse	TBD	Grouse PSD/IR	
Notes/Remarks							
Flight follow through appropriate dispatch until contact has been made on the incident. Then flight follow local.							
Cost Summarys randy.j.gilbert@usda.gov/Buttehb24@gmail.com							

CONTROLLED UNCLASSIFIED INFORMATION//BASIC (CUI)

INCIDENT RADIO COMMUNICATIONS PLAN		1. INCIDENT NAME		2. DATE/TIME PREPARED		3. OPERATIONAL PERIOD DATE/TIME		
ICS-205		Grouse Fire		08-10-2024 1500		08-11-2024 0600-2000		
4. BASIC RADIO CHANNEL UTILIZATION								
Ch #	Channel Name	Assignment	RX Frequency	RX Tone/NAC	TX Frequency	TX Tone/NAC	Mode Digital (D) Analog (A)	Remarks
1	CMD1	Not Installed	170.0000	162.2	166.6750	162.2	A	Sheep Mountain
2	CMD2	Not Installed	170.6875	162.2	166.5750	162.2	A	Stine Mountain
3	FS RPT		173.0875	167.9	165.7250	167.9	A	Odell FS Repeater
4	FS DIR		173.0875	0.000	173.0875	123.0	A	Big Hole Direct
5	VPOND PK	Dillon Dispatch	173.0875	0.000	165.7250	103.5	A	FS Vipond Park
6	R1SOARPT	Tactical RPT	173.1875	136.5	164.3875	136.5	A	FS Scene Of Action (SOA) RPT
7	TAC7	DIV A	168.0500	162.2	168.0500	162.2	A	Division A
8	TAC8	DIV M	168.2000	162.2	168.2000	162.2	A	Division M
9	TAC9	DIV W	168.6000	162.2	168.6000	162.2	A	Division W
10	TAC10	DIV Z	166.7250	162.2	166.7250	162.2	A	Division Z
11	TAC11	Structure Group	166.7750	162.2	166.7750	162.2	A	Structure Group
12	TAC12	Unassigned	168.2500	162.2	168.2500	162.2	A	
13	VMED28	Medical	155.3400	0.000	155.3400	156.7	A	Medical/Ambulance
14	A/G PRI	Air to Ground Pri	168.5250	0.000	168.5250	0.000	A	Primary Air to Ground
15	A/G SEC	Air to Ground Sec	169.8125	0.000	169.8125	0.000	A	Secondary Air to Ground
16	AIRGUARD	EMERGENCY USE ONLY	168.6250	0.000	168.6250	110.9	A	EMERGENCY USE ONLY
ICS-205		Dave Miller		Current Clone Version:		080924		ALWAYS POST A HUMAN REPEATER TO RELAY MESSAGES OUT OF AREAS WHERE YOU HAVE INADEQUATE COMMUNICATIONS
Prepared By:		COML(t)		DPH/GPH:		Press & Hold # Key to Check Version		
				P-150/S/KNG/BKR:		Look at Zone Label for Version		

COMMUNICATIONS UNIT 24 hr phone:

208-891-8019

CONTROLLED UNCLASSIFIED INFORMATION//BASIC (CUI)

Resource Advisor Messages

Ayme Swartz (Archaeologist) 406-560-5250
ayme.swartz@usda.gov

- You are in bear country!!! Store all attractants such as food, drinks, garbage, toiletries, oil etc. in a bear proof container. *Do NOT sleep with food in tents at night.*
- This fire is located within an active grazing allotment. There may a few head of cattle remaining up Pettengill creek. Please let the local district know of any sightings.
- **AIR OPS**—There are aquatic invasive species in the rivers such as whirling disease and New Zealand mud snails. Do not contaminate our lakes!!!
 - ✓ If river water is used, do not drop into any other waterways and do not cross-contaminate buckets.
 - ✓ Do not use water from west of the Continental Divide.
 - ✓ Avoid dipping or scooping water from multiple water sources within the same operational period to minimize cross-contamination of water sources.
 - ✓ Use deeper (blue) water whenever possible. Avoid areas that will intake mud or plants.
 - ✓ Avoid transferring water between drainages or between unconnected waters within the same drainage.
 - ✓ Do not dump water directly from one stream or lake into another. Avoid spraying suppression water into local waterbodies (ponds, lakes, rivers, streams, wetlands, seeps, or springs).
 - ✓ **Do not dip out of Bobcat or Schwinger lakes!**
- There is a weed wash located at the junction of highways 43 and 73 at the H-J. Please use upon arrival and departure, we are striving to prevent the spread of noxious weeds.



HUMAN RESOURCE MESSAGE

There is zero tolerance for harassment, political activities, alcohol, or federally prohibited substances on this fire incident.

You are always responsible for how you act and what you say... no matter how you feel.

Incident Personnel Responsibilities:

Incident personnel have the responsibility to conduct themselves in a manner that supports a discrimination and harassment-free work environment.

Incident Personnel Rights:

Incident personnel have the right to work in a harassment-free environment where they are treated with dignity and respect.

It is the obligation of all incident personnel to practice mutual respect for other personnel.

Debby Hassel, HRSP (979) 255-5513

hrrspfire@gmail.com

\$\$\$ GROUSE FINANCE PROCEDURES \$\$\$

Finance email: 2024.grouse.finance@firenet.gov

Finance Phone Numbers

Time (Personnel and Equipment): 208-914-1873

Comp/Claims: 208-891-6348

Finance check-in: Please email electronic copies of the following documents as applicable:

- Contract/Agreement/State Cooperative Agreement
- Casual Hire Form
- Resource Order
- Crew Manifest
- Travel CTRs and Shift Tickets

Submitting Time: Please email completed CTRs and/or Shift Tickets signed by immediate supervisor **every 2 days, after submitting travel time**. Include Resource Order Number in the subject line.

- Electronic CTRs and Shift Tickets are available through the QR code on the IAP cover.
- A **legible photo** is acceptable.

****** All time must include required justifications for hazard pay, compensable meal breaks, or excess hours. Don't forget name, RO# and date. **Include a valid phone # and email.**

Finance demob: Please **Email or call** Finance to notify them that you are demobing.

- Provide email and phone number on **final** CTR and/or Shift Ticket.
- Email electronic copies of your final CTRs and Shift Tickets, including travel time. Include in the email they are final documents for the incident.
- Finance will email final time documents (including OF-288/286) electronically for review and signatures.

Medical

Please work directly with the **Medical Unit Leader**. The MEDL will work with Finance to ensure forms are available and completed.

Damages or Claims

Do not wait until day of demob. An electronic OF-289, *Property Loss or Damage Report*, is available through the QR Code on the IAP cover. Contact Comp/Claims (or FSC) with questions. Include witness statements, signatures and **your contact info**.

DEMOB TIPS

Airline Flights

Contact DEMOB early to arrange your flight home. It can take up to 72 hours to process.

Weedwash

All vehicles that leave paved roads must go through weedwash located at the junction of highways 43 and 73 at the H-J.

Crew Swaps & Extensions

All crew swaps and extension requests must be initiated through your fire supervisor at least 72 hours prior to your scheduled demobilization and submitted through your respective section chief.

Demob Steps

1. Return all supplies, radios, etc. that were checked out.
2. Submit time for all personnel and equipment to finance.
3. All vehicles that have been to the fireline must go through a car/weed wash.
4. Receive a copy of your OF-288 and/or other financial documentation from Finance.
5. Complete the Demob Checkout Sheet using the QR Code located on the IAP
6. Once you submit the Demob Checkout Sheet you are released and may travel home.

Contact Demob

If you have demob, airline, flight, extensions, or crew swap questions you can contact demob at 605.381.2521 or 2024.grouse.demob@firenet.gov

Safe Travels!

DEMOB LIST

DEMOB 8/11/2024		
Request #	Item Code	Resource Name
E-9	SKG1	SPENCER LOGGING LLC - 14781
E-63	LOGL	ARKE LOGGING
E-94	EXC2	BLACKTAIL FIRE
O-79	BCMG	ABERLE, TOBY
O-134	DRIV	LADELL, ANDREW
O-136	FFT2	MUNYER, BURGESS
O-142.4	MEDL	SIMPSON, JOEL
O-142.22	RCDM	LYON, CORDIE
O-142.35	TNSP	FISCHER, WENDY L
O-142.43	LOFR	ZORNO, CAROLYN SUE
O-142.50	PSCC	HAYNIE, DEVIN JAY
O-142.61	TFLD	BISHOP, TOBEY E
O-142.71	DRIV	DINAR, SAMANTHA

DEMOB 8/12/2024		
Request #	Item Code	Resource Name
C-13	CRW1	BITTERROOT IHC
E-32	VUTV	BUTTE FD UTV 1
O-17	TFLD	BURKE, EVAN W
O-142.18	COMT	MILLER, DAVE
O-142.24	RESL	FORGENSI, JUSTIN MAX
O-142.57	OSCC	SHARPE, RYAN

DEMOB 8/13/2024		
Request #	Item Code	Resource Name
E-25	POT1	WELBORN AQUA HAUL & FIRE
E-30	WTS2	ECM DISTRIBUTING LLC - 455634
O-152	TFLD	GORWITZ, BRIAN
O-154	THSP	WALKER, RUSS

Training Message

Solve the puzzle and come see us for a piece of candy
or cup of coffee and great conversation!

Today's Message: Trainees should -----

A	B	C	D	E	F	G	H	I	J	K	L	M	N	O	P	Q	R	S	T	U	V	W	X	Y	Z
21				5			6															12			

A W A H E W H H E
 21 24 12 21 19 7 16 6 5 16 1 12 8 18 6 18 6 5
 E A E A
 8 25 16 8 3 5 25 18 18 26 21 8 25 8 25 14 7 23 5 16 8 21 24 8 7 18

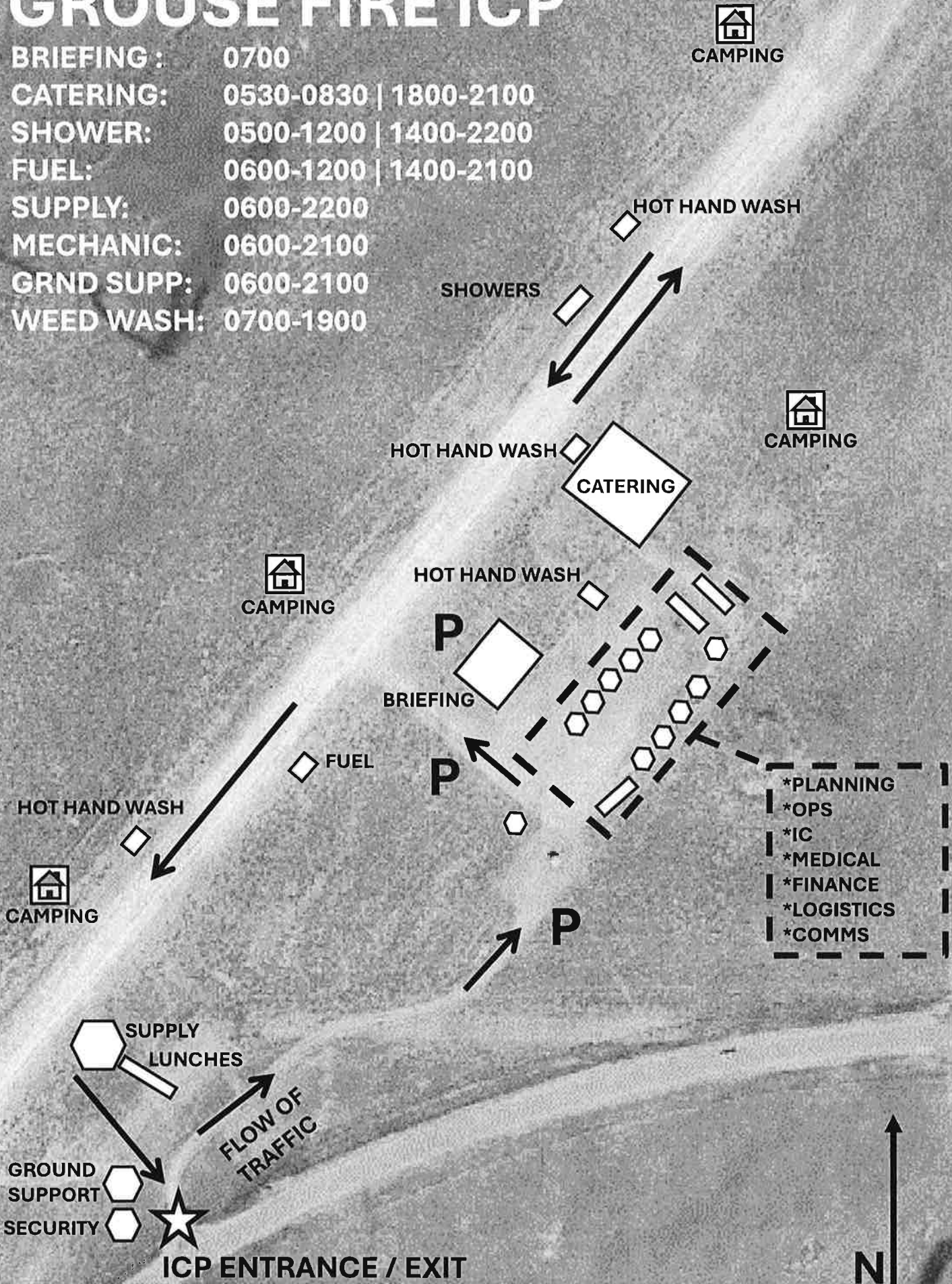
Location: Check-In / Demob Yurt

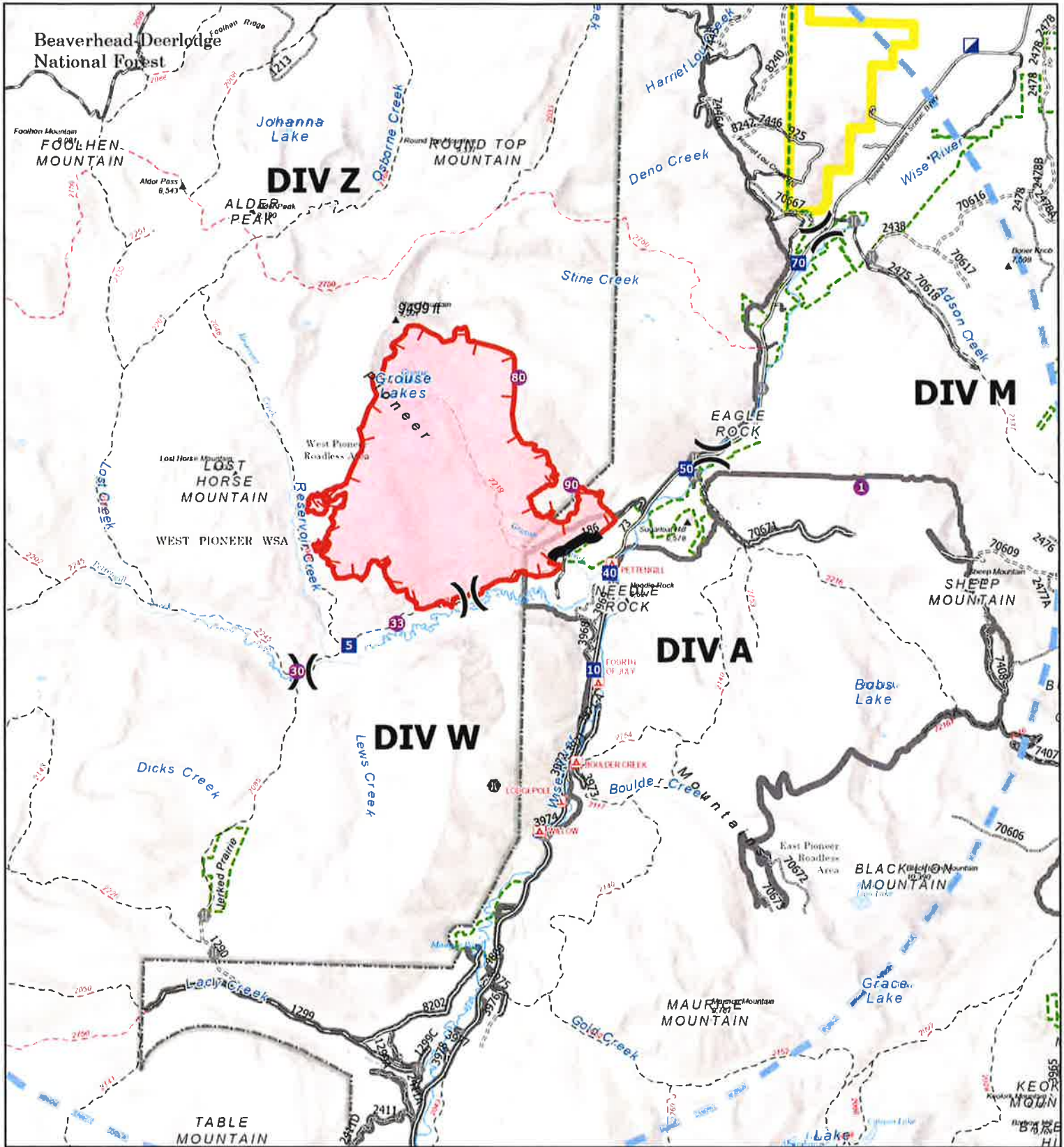
Training Specialists: Wendy Fischer & Carolyn Blatz (T)

(970)759-9610 · wendy_fischer@firenet.gov / (573)778-2810 carolyn_blatz@firenet.gov

GROUSE FIRE ICP

BRIEFING : 0700
CATERING: 0530-0830 | 1800-2100
SHOWER: 0500-1200 | 1400-2200
FUEL: 0600-1200 | 1400-2100
SUPPLY: 0600-2200
MECHANIC: 0600-2100
GRND SUPP: 0600-2100
WEED WASH: 0700-1900





IAP

Grouse
MT-BDF-246327
08/11/2024 Day

4,157 acres at 08/10/2024 @ 0145 MDT

0 0.250.5 1 1.5 2

Miles

1 100,000 | RM CIMT 3 | 8/10/2024 1842

Acres from IR
 North American 1983 Datum



	Wildfire Daily Fire Perimeter		Drop Point
	Contained		Trail
	Uncontained		National Designated Trail
	Temporary Flight Restriction		USFS Roadless Areas
	Hellspot		FS Wilderness Study Area Boundary
	Division Break		Forest Service Land
	Incident Command Post		Bureau of Land Management Lands



Current Maps

ACTIVITY LOG (ICS 214)

1. Incident Name:	2. Operational Period: Date From: _____ Date To: _____ Time From: _____ Time To: _____
--------------------------	--

3. Name:	4. ICS Position:	5. Home Agency (and Unit):
-----------------	-------------------------	-----------------------------------

6. Resources Assigned:		
Name	ICS Position	Home Agency (and Unit)

7. Activity Log:	
Date/Time	Notable Activities

8. Prepared by: Name: _____	Position/Title: _____	Signature: _____
ICS 214, Page 1	Date/Time: _____	



Medical Plan (206 WF)

ROCKY MOUNTAIN INCIDENT MANAGEMENT

1. Incident / Project Name		2. Operational Period				
Grouse Fire		Date/Time: 8/11/2024 0600-2000				
3. Ambulance Services						
Name	Address	Phone and Emergency Frequency		Advanced Life Support (ALS) YES NO		
A1 Ambulance	Butte, MT	406-490-3130		X (most of the time)		
Anaconda Fire <small>(can rendezvous at HWY 569/HWY 43)</small>	Anaconda, MT	406-463-2164		X		
4. Air Ambulance Services						
Name	Phone	Type of Aircraft & Capability				
Lifelight	800-232-0911 Order through Dillon Interagency Dispatch	ALS with critical care Night Vision (will fly at night)				
Air Idaho Rescue (Air Methods) Air 4	877-818-5553 Order through Dillon Interagency Dispatch	ALS with critical care Night Vision (will fly at night)				
4MA Forest IA	Order through Dillon Interagency Dispatch	Bell 407 HP Litter Capable (will NOT fly at night)				
2HX Grouse Fire	Order through Dillon Interagency Dispatch	Bell 429 Hoist Capable (will NOT fly at night)				
5. Hospitals ***** TRAVEL TIME FROM ICP*****						
Name Complete Address	LAT: DD° MM.MMM'N LONG: DD° MM.MMM'W	Travel Time From ICP Air Ground		Phone	Helipad Yes /No	Level of Care
St Vincent Regional 1233 N 30th St Billings, MT	Lat: 45° 47.658' N	1 hr	4 hrs	406-657-7000	YES	Level 1 Trauma Cardiac & Cath Lab Stroke Center
	Long: 108° 31.003' W					
St Patrick Hospital 500 W Broadway St Missoula, MT	Lat: 46° 52.533' N	45 min	2.25 hrs	406-543-7271	YES	Level 2 Trauma Cardiac & Cath Lab Stroke Center
	Long: 114° 0.001' W					
St James Healthcare 400 S Clark St Butte, MT	Lat: 46° 0.512' N	35 min	45 min	406-723-2585	YES	Level 3 Trauma Cardiac Certified Stroke Certified
	Long: 112° 32.742' W					
Barrett Hospital 600 HWY 91 S Dillon, MT 59725	Lat: 45° 12.097' N	40 min	1 hr	406-683-3000	YES	Level 4
	Long: 112° 38.839' W					
Community Hosp of Anaconda 401 W PennsylvaniaST Anaconda, MT	Lat: 46° 7.950' N	35 min	50 min	406-563-8500	YES	Local Emergency Room Only
	Long: 112° 57.427' W					
*Travel times are from Grouse Fire ICP to the facility and DO NOT include response time to the incident.						
6. Division Branch Group						
ALPHA	EMS Responders & Capabilities:	E-3 AMBO 1 - Andrew Ellis O-170 REMS 5 - Ben Lewis E-46 MEDIC TEAM 2 - Kahl Clark O-166 MEDIC 6 - Trenton Harper				
	Equipment Available on Scene:	4x4, UTV, ALS Kit, Rope Rescue, ALS Ambulance, Oxygen				
	Medical Emergency Channel:	CH 5 VPOND Dillon Disptach A/G: VMED 28				
MIKE	EMS Responders & Capabilities:	O-59 MEDIC 3 - John Baker				
	Equipment Available on Scene:	4x4, ALS KIT				
	Medical Emergency Channel:	CH 5 VPOND Dillon Disptach A/G: VMED 28				
WHISKEY	EMS Responders & Capabilities:	O-58 MEDIC 4 - Becca Wallace (Spiked with Kaniksu Mod)				
	Equipment Available on Scene:	4x4, ALS Kit				
	Medical Emergency Channel:	CH 5 VPOND Dillon Disptach A/G: VMED 28				
ZULU	EMS Responders & Capabilities:	UNSTAFFED				
	Equipment Available on Scene:					
	Medical Emergency Channel:	CH 5 VPOND Dillon Disptach A/G: VMED 28				
STRUCTURE	EMS Responders & Capabilities:	No medical Resoureces assigned				
	Equipment Available on Scene:					
	Medical Emergency Channel:	CH 5 VPOND Dillon Disptach A/G: VMED 28				
	EMS Responders & Capabilities:					
	Equipment Available on Scene:					
	Medical Emergency Channel:					
8. Prepared by: (Medical Unit Leader)		Date	Reviewed by: (Safety Officer)		Date	
/s/ Dan Leone MEDL		8/10/2024	/s/ Jason Miller SOFC (T)		8/10/2024	

MEDICAL PLAN (ICS 206 WF)

Controlled Unclassified Information//Basic

Medical Incident Report					
FOR A NON-EMERGENCY INCIDENT, WORK THROUGH CHAIN OF COMMAND TO REPORT AND TRANSPORT INJURED PERSONNEL AS NECESSARY. FOR A MEDICAL EMERGENCY: IDENTIFY ON SCENE INCIDENT COMMANDER BY NAME AND POSITION AND ANNOUNCE "MEDICAL EMERGENCY" TO INITIATE RESPONSE FROM IMT COMMUNICATIONS/DISPATCH.					
Use the following items to communicate situation to communications/dispatch.					
1. CONTACT COMMUNICATIONS / DISPATCH (Verify correct frequency prior to starting report) <i>Ex: "Communications, Div. Alpha. Stand-by for Emergency Traffic."</i>					
2. INCIDENT STATUS: Provide incident summary (including number of patients) and command structure. <i>Ex: "Communications, I have a Red priority patient, unconscious, struck by a falling tree. Requesting air ambulance to Forest Road 1 at (Lat./Long.) This will be the Trout Meadow Medical, IC is TFLD Jones. EMT Smith is providing medical care."</i>					
Severity of Emergency / Transport Priority	<input type="checkbox"/> RED / PRIORITY 1 Life or limb threatening injury or illness. Evacuation need is IMMEDIATE <i>Ex: Unconscious, difficulty breathing, bleeding severely, 2^o – 3^o burns more than 4 palm sizes, heat stroke, disoriented.</i> <input type="checkbox"/> YELLOW / PRIORITY 2 Serious Injury or illness. Evacuation may be DELAYED if necessary. <i>Ex: Significant trauma, unable to walk, 2^o – 3^o burns not more than 1-3 palm sizes.</i> <input type="checkbox"/> GREEN / PRIORITY 3 Minor Injury or illness. Non-Emergency transport <i>Ex: Sprains, strains, minor heat-related illness.</i>				
Nature of Injury or Illness & Mechanism of Injury			Brief Summary of Injury or Illness <i>(Ex: Unconscious, Struck by Falling Tree)</i>		
Transport Request			Air Ambulance / Short Haul / Hoist Ground Ambulance / Other		
Patient Location			Descriptive Location & Lat./Long. (WGS84)		
Incident Name			Geographic Name + "Medical" <i>(Ex: Trout Meadow Medical)</i>		
On-Scene Incident Commander			Name of on-scene IC of Incident within an Incident <i>(Ex: TFLD Jones)</i>		
Patient Care			Name of Care Provider <i>(Ex: EMT Smith)</i>		
3. INITIAL PATIENT ASSESSMENT: <i>Complete this section for each patient as applicable (start with the most severe patient)</i> Patient Assessment: See IRPG PAGE 106			VITAL SIGNS Age _____ Weight _____ Level of Consciousness: Alert and Oriented to: Person Place Time Event Responsive to: Verbal Stimulus Pain Stimulus Unresponsive Breathing: Not Normal Difficult/Labored Rate _____ Pulse Rate: Absent Present: _____/minute Skin Color: Normal Pale Bluish Red Skin Moisture: Normal Dry Moist Profuse Sweating Skin/Body Temp: _____°F Normal Hot Cold Cool Pupils: Equal and Reactive Unequal Dilated Constricted Blood Pressure: SYS _____ / DIA _____ Oxygen Saturation with Pulse Oximeter (SaO2): _____ Blood Glucose Level: _____		
Treatment:					
4. TRANSPORT PLAN: Evacuation Location (if different): (Descriptive Location (drop point, intersection, etc.) or Lat./Long.) Patient's ETA to Evacuation Location:					
Helispot / Extraction Site Size and Hazards:					
5. ADDITIONAL RESOURCES / EQUIPMENT NEEDS: <i>Example: Paramedic/EMT, Crews, Immobilization Devices, AED, Oxygen, Trauma Bag, IV/Fluid(s), Splints, Rope rescue, Wheeled litter, HAZMAT, Extraction</i>					
6. COMMUNICATIONS: Identify State Air/Ground EMS Frequencies and Hospital Contacts as applicable					
Function	Channel Name/Number	Receive (RX)	Tone/NAC *	Transmit (TX)	Tone/NAC *
COMMAND					
AIR-TO-GRND					
TACTICAL					
7. CONTINGENCY: Considerations: If primary options fail, what actions can be implemented in conjunction with primary evacuation method? Be thinking ahead.					
8. ADDITIONAL INFORMATION: Updates/Changes, etc.					
REMEMBER: Confirm ETAs of resources ordered. Act according to your level of training. Be Alert. Keep Calm. Think Clearly. Act Decisively.					