



Incident Action Plan

Grouse Fire

MT-BDF-246327, P1R4SM24 (0102)

Monday, August 12, 2024

0600-2000

Safety Starts Here

Communication

Today new command channels (CMD1 & CMD2) will be in use since the repeaters are now functional. You should have already received a radio clone with the correct frequencies. Communication is one of the most important parts of our job.

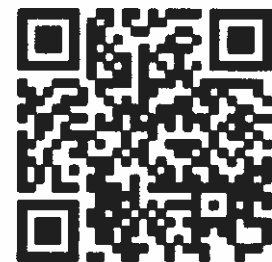
Whenever there is an update to communication plans or there are any questions on the functionality of our radio communications, we should be doing radio checks with our crew, adjoining forces and supervisor prior to engaging. Additionally, post a human repeater to relay messages out of areas where you have inadequate communications.

You should know who to contact, how to make contact, when to make contact, and what needs to be communicated. If not, ask! Ask for feedback and never assume someone knows something if you haven't shared the information.



All firefighters have five communication responsibilities:

- Brief others as needed
- Debrief your actions
- Communicate hazards to others
- Acknowledge messages
- Ask if you don't know

Incident Commanders
Bill Waln, Phil Daniels
Jay Mickey (T)

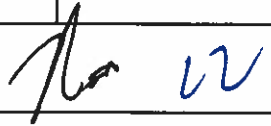


Available at this site: Remote Incident Check-in, IAP's, Maps, Finance, Fillable-CTR's, Training, Demob, Shift Tickets and General Messages

INCIDENT OBJECTIVES	1. Incident Name GROUSE FIRE	2. Date Prepared August 11, 2024	3. Time 1300
4. Operational Period: August 12, 2024 Day Operations 0600-2000			
<p>Leaders Intent: It is the Incident Commander's expectation that we as an organization will meet the following leader's intent, as well as the incident objectives identified below:</p> <ul style="list-style-type: none"> • Ensure all incident strategies and actions reflect a commitment to public, responder, and aviation safety through use of an adaptive risk management process as outlined in the IRPG and the aviation risk assessment process. • Treat all incident personnel, cooperators, and local public with dignity and respect, and create a "no tolerance" atmosphere for harassment, alcohol, or illegal drug use. • Respect the integrity of the cultural resources in and adjacent to the incident, coordinating all operational activities with the Forest Archaeologist. <p>Incident Objectives:</p> <ul style="list-style-type: none"> • Continually provide for emergency personnel and public safety through the utilization of a deliberate, risk-informed approach, with avenues for feedback from personnel. • Use a full suppression strategy with a combination of direct, indirect, and point zone protection tactics where reasonable to protect the identified critical values of risk. • Develop contingency plans to identify management actions to be taken if the fire threatens Pioneer Scenic Byway, Jerked Prairie, and/or Highway 43. • Foster and maintain relationships with the public, cooperators, and vested parties. • Ensure coordinated, timely, and accurate release of information to the public and land managers, including the BLM and the Montana DNRC, utilizing the full suite of platforms. • Maintain fiscal accountability by making good risk-informed decisions. 			
8. Attachments (X if attached)			
<input checked="" type="checkbox"/>	Cover / Safety Message	<input checked="" type="checkbox"/>	ICS 203 Organization Assignment List
<input checked="" type="checkbox"/>	Fire Behavior Forecast	<input checked="" type="checkbox"/>	ICS 204 Division Assignment Lists
<input checked="" type="checkbox"/>	ICS 205 Incident Radio Comm Plan	<input checked="" type="checkbox"/>	Fire Weather Forecast
<input checked="" type="checkbox"/>	Human Resource Message	<input checked="" type="checkbox"/>	ICS 220 Air Operations Summary
<input checked="" type="checkbox"/>	Demob List	<input checked="" type="checkbox"/>	Resource Advisor Message
<input checked="" type="checkbox"/>	NR Chainsaw Parts Order Form	<input checked="" type="checkbox"/>	Demob Tips
<input checked="" type="checkbox"/>		<input checked="" type="checkbox"/>	Training Message
<input checked="" type="checkbox"/>		<input checked="" type="checkbox"/>	Incident Map
<input checked="" type="checkbox"/>		<input checked="" type="checkbox"/>	ICS 206 Medical Plan
<input checked="" type="checkbox"/>		<input checked="" type="checkbox"/>	Medical Incident Report – 8 Line
9. Prepared by PSCC		9. Approved by (Incident Commander)	
PETER BARTH 		WALN / DANIELS / MICKEY (T) 	

ORGANIZATION ASSIGNMENT LIST

Incident Name		Operations Section		
Grouse Fire		Field	Brandon "Bones" Bonenberger	
		Planning	Troy Mueller, Joe Duran (T)	
Date Prepared	Time Prepared	Strategic	Rodney Redinger	
8/11/2024	1900	Division/Group		
Operational Period				
8/12/2024 0600 to 8/12/2024 2000				
Incident Commander and Staff		Alpha	DIVS	
Incident Commander	Bill Waln, Jay Mickey (T)	Mike	DIVS	Blake Stewart, Bela Harrington (T)
Deputy	Phil Daniels	Whiskey	DIVS	Chris Rokosh, Zach Valentiner (T)
Safety Officer	Alison Robb, Brandon Hoffman Jason Miller (T), David Day (T)	Zulu	DIVS	Geoff Harrison, Alex Doud (T)
Medical Unit	Dan Leone, Kristina Bastian (T)	Structure	Group	Unstaffed
Liaison Officer	Tim Flanary			Joe Tjaden
Information Officer	Cass Cairns, Lynn Lockwood			
Human Resource Specialist	Debby Hassel (v)			
Agency Representatives		Air Operations Branch		
BDNF	Tim Lahey, Sara Rouse (T)	Air Operation Branch Director		Matt Lingenfelter
BLM	Lindsey Babcock, Brandy Janzen (T)	Air Support Group Supervisor		Randy Gilbert
MT-DNRC	Tim Egan	Air Tactical Group Supervisor		
Resource Advisor	Ayme Swartz	Helibase Manager		
		Finance Section		
		Chief	Kayla Davin	
		Time Unit	Natasha Goedert (T)	
		Cost/Comp Unit	Annette Pintado (v)	
		Comp/Claims	Arlene Tucker (T)	
Planning Section				
Chief	Peter Barth			
Resource Unit	Rick Lancaster, Kellie Stover			
Situation Unit	Jodi Wetzstein			
Training Specialist	Wendy Fischer (v), Carolyn Blatz (T)	Logistics Section		
Check In	Carla Rumsey	Chief	Darin Gehring, Randy Spiering Jamie Rietz (T)	
Meteorologist	Mark Loeffelbein	Facilities Unit	Ish Ennis, Ken Hehr, Paul Kimpling	
Demobilization Unit	Logan Brown	Ground Support Unit	Lee Walker	
Documentation Unit	Spencer Pollock (RIST)	Communications Unit	Walter Warrick	
IT Specialist	Eric Simmons, Tyler Ward (T)	Supply Unit	Robin Brooks	
Long Term Analyst	Erin Noonan (v)	Food Unit	Wally Leander	
GIS Specialists	Sarlyn McCormick, Chris "Fern" Ferner Jennifer McKee (T)(v)	Security	Dave Tyndell	
		Ordering	Beth Youngstrom, Monty Bollock (T)	
Rick Lancaster -- RESL				





Grouse Weather Forecast

FORECAST NO: 3
FORECAST FOR: Mon, Aug 12, 2024 Day
FORECAST ISSUED: Aug 11, 2024, 1800 MDT

NAME OF FIRE: Grouse
UNIT: Beaverhead-Deerlodge NF
SIGNED: //s// Mark Loeffelbein - IMET

WEATHER DISCUSSION: ...It will remain very unstable through the day which will support a higher chance of thunderstorms starting mid-morning. Lighting and wind gusts to 30 miles per hours will be the threats from thunderstorms that develop as the lack of moisture will limit rainfall. A small low pressure system will swing through on Tuesday increasing the chance of thunderstorms and wind gusts.

FORECAST FOR TODAY: Partly Cloudy (30-50%). 10% Chance of thunderstorms after 1000, increasing to 30% Chance of thunderstorms after 1500.

Max Temperature(°F):

(6500 ft.) 71-76 (3-6° Warmer) **Min RH: (6500 ft.)** 21-26% (3-5% Higher)
(8500 ft.) 66-71 (3-6° Warmer) **Min RH: (8500 ft.)** 24-29% (3-5% Higher)

20 FT Winds:

Slope/Valleys: West facing slopes West 4-8 mph after 1100, otherwise calm becoming upslope 3-6 mph after 1030.

Wise River Drainage: Channeling down drainage 4-8 Gusts to 10 mph.

Ridgetops: Southwest 8-12 Gusts to 18 mph.

CWR (0.1"+): 10% **Chance of Lighting:** 30% **LAL:** 2

Inversion: Inversions breaking around 1030. **Haines:** 5 Moderate

OUTLOOK FOR TONIGHT: Mostly Clear (0-10%). 10% Chance of Thunderstorms overnight.

Min Temperature (°F):

Lower Elev. (6500 ft.) 38-43
Upper Elev. (8500 ft.) 45-50

Max RH:

Lower Elev. 60-65%
Upper Elev. 40-50%

20 FT Winds:

Slope/Valleys: Upslope 3-6 mph until 2200, then downslope 2-4 mph.

Ridgetops: Becoming less than 5 mph after 2200.

CWR (0.1"+): 0% **LAL:** 1 **Haines:** 4 Low


EXTENDED OUTLOOK (6500 ft.):


Tuesday...Partly Cloudy (50-70%). 50% Chance of Thunderstorms. High 69-74. RH: 36-41%. Winds: Southwest 10 to 14 Gusts to 22 mph. Haines: 4. CWR (0.1"+): 50%

Wednesday...Partly Cloudy (40-60%). 30% Chance of Thunderstorms. High 67-72. RH: 30-35%. Winds: West 9 to 13 Gusts to 18 mph. Haines: 3. CWR (0.1"+): 30%

Thursday...Partly Cloudy (30-50%). 20% Chance of Thunderstorms. High 66-71. RH: 29-34%. Winds: Southwest 8 to 12 Gusts to 17 mph. Haines: 4. CWR (0.1"+): 20%

PLEASE submit your weather observations to the IMET.

DIVISION/GROUP ASSIGNMENTS							
Grouse Fire				Branch		Division	
						Alpha	
Operational Period							
8/12/24		0600	8/12/24		2000		
Operations Personnel:							
Operations Chief (Plans)		Troy Mueller; Joe Duran (T)		Division/Group Supervisor		Blake Stewart; Bela Harrington (T)	
Operations Chief (Field)		Brandon "Bones" Bonenberger		Air Attack Supervisor			
Safety Officer		Brandon Hoffman, Dave Day (T)		Medical Unit Leader		Dan Leone	
RO #	Item Code	Resource	LWD	Leader Name	# Person	Report Time/Place	Report Time/Place
O-152	TFLD		8/14	Brian Gorwitz	1	ICP/0600	ICP/2000
O-132	TFLD(T)		8/13	Tyson Lucier	1	ICP/0600	ICP/2000
O-129	TFLD(T)		8/19	Donovan Suko	1	ICP/0600	ICP/2000
C-1	CRW1	Bonneville IHC	8/14	Eric Evans	22	ICP/0600	ICP/2000
C-10	CRW1	Flathead IHC	8/14	Shawn Borgen	24	ICP/0600	ICP/2000
* C-11	CR2I	Great Northern	8/19	Chris McMaster	21	ICP/0600	ICP/2000
C-9	CRW2	Lava River	8/14	Felix Trujillo	20	ICP/0600	ICP/2000
E-33	ENG6	C&C Cougar Fire	8/15	Cathy Reilly	3	ICP/0600	ICP/2000
* E-35	ENG6	Castle Mountain	8/15	Cody Welch	3	ICP/0600	ICP/2000
E-53	ENG6	Graywolf	8/20	Jonathan Perez	3	ICP/0600	ICP/2000
E-42	SKG1	RT Logging	8/15	Thompson	2	ICP/0600	ICP/2000
O-166	EMPF	Medic 6	8/24	Trenton Harper	1	ICP/0600	ICP/2000
O-170	REMS	REMS 5	8/24	Ben Lewis	4	ICP/0600	ICP/2000
E-3	AMB2	Fireline Medics (AMBO 1)	8/20	Andrew Ellis	2	ICP/0600	ICP/2000
Work Assignments:							
END STATE: Fireline in the correct location with the right dimensions so the fire cannot threaten the historic cabins, private residences, and Pioneer Mountain Scenic Byway.							
PURPOSE: Prep indirect fireline between Mike/Alpha division break and FSR 186/Pettengill Road, patrol and monitor established edge from handline to Alpha/Whiskey break.							
TASK: Prep indirect fireline along the byway for possible burnout and hold fire within established fire's edge.							
Special Instructions:							
* denotes IA resource							
AMBO 1 (E-3 Fireline Medics) staged at DP-40 and available for all Divisions							
Communication Summary							
See Communication Plan							
Prepared By: Kellie Stover - RESL				Signature: 		110 Personnel	

DIVISION/GROUP ASSIGNMENTS							
Grouse Fire				Branch		Division	
						Mike	
Operational Period							
8/12/24	0600	8/12/24	2000				
Operations Personnel:							
Operations Chief (Plans)		Troy Mueller; Joe Duran (T)		Division/Group Supervisor		Chris Rokosh; Zach Valentiner (T)	
Operations Chief (Field)		Brandon "Bones" Bonenberger		Air Attack Supervisor			
Safety Officer		Brandon Hoffman, Dave Day (T)		Medical Unit Leader		Dan Leone	
RO #	Item Code	Resource	LWD	Leader Name	# Person	Report Time/Place	Report Time/Place
O-133	TFLD		8/18	Ryan Hennager	1	ICP/0600	ICP/2000
O-144	TFLD(T)		8/19	Chris Hericks	1	ICP/0600	ICP/2000
E-57	ENG6	Cahoon Contracting	8/19	Randy Mattson	3	ICP/0600	ICP/2000
O-119	HEQB		8/19	Ryan Williams	1	ICP/0600	ICP/2000
O-124	HEQB(T)		8/19	Joel Wealton	1	ICP/0600	ICP/2000
C-10.26	HEQB		8/21	Jacob Durham	1	ICP/0600	ICP/2000
C-11.1	HEQB(T)		8/19	Brian Buckley	1	ICP/0600	ICP/2000
E-61	FEL1	DS JR Trucking, Inc.	8/19	Clint Schwalm	2	ICP/0600	ICP/2000
E-62	FEL1	DS JR Trucking, Inc.	8/19	Dave Sheets	2	ICP/0600	ICP/2000
E-84	FEL1	DS JR Trucking, Inc.	8/21		1	ICP/0600	ICP/2000
E-82	SKD1	DS JR Trucking, Inc.	8/21	Al Noack	2	ICP/0600	ICP/2000
E-83	SKD1	DS JR Trucking, Inc.	8/21	Rick Beeman	1	ICP/0600	ICP/2000
E-67	LOGL	Akre Logging	8/21	Dean Akre	1	ICP/0600	ICP/2000
E-80	LOGL	John Jump Trucking	8/21	Ricky Zao	2	ICP/0600	ICP/2000
E-64	LOG	Akre Logging	8/20	Kirk Randolph	1	ICP/0600	ICP/2000
E-65	LOG	Akre Logging	8/20	Brandon Clary	1	ICP/0600	ICP/2000
E-66	LOG	Akre Logging	8/20	Sam Wylie	1	ICP/0600	ICP/2000
E-108	EXC2	Grizzley Timber, LLC	8/21	Carissa Jenkins	2	ICP/0600	ICP/2000
O-135	THSP		8/19	Sam Hodge	1	ICP/0600	ICP/2000
O-154	THSP		8/12	Russ Walker	1	ICP/0600	ICP/2000
O-59	EMPF	Medic 3	8/18	John Baker	1	ICP/0600	ICP/2000
Work Assignments:							
<p>END STATE: Fuels have been treated and thinned along the Pioneer Mountain Scenic Byway, to increase the probability of success in using the road as a holding feature.</p> <p>PURPOSE: Keep fire west of the Pioneer Mountain Scenic Byway, and protect the identified values at risk along the corridor.</p> <p>TASK: Prep and improve the Pioneer Mountain Scenic Byway between the Harriet Lou Creek Road and the Division A/M break. Reduce the fuel load using approved specifications and techniques approved by the local Forest. Implement the necessary traffic control measures to provide for the safety of firefighters and the public while operating on or near the roadway.</p> <p>END STATE: Processed logs and slash from fuels treatments are moved and relocated to designated areas away from the Pioneer Mountain Scenic Byway in accordance with local Forest's request.</p> <p>PURPOSE: To remove and reduce potential fuel loading on the fire's side of the Pioneer Mountain Scenic Byway, while maintaining the natural view of the Forest for visitor's and local residents.</p> <p>TASK: Load processed logs and slash onto the appropriate transport vehicles and safely deliver the materials to the designated drop points. Processed logs to DP 50 and slash to DP 60.</p>							
Special Instructions:							
<p>AMBO 1 (E-3 Fireline Medics) staged at DP-40 and available for all Divisions</p> <p>Division Mike Road Guards: Bradley Davis, John Richardson, Kevin Albrecht</p>							
Communication Summary							
See Communication Plan							
Prepared By: Kellie Stover - RESL				Signature: 		30 Personnel	

CONTROLLED UNCLASSIFIED INFORMATION//BASIC (CUI)

INCIDENT RADIO COMMUNICATIONS PLAN		1. INCIDENT NAME		2. DATE/TIME PREPARED		3. OPERATIONAL PERIOD DATE/TIME		
ICS-205		Grouse Fire		08-11-2024 1500		08-12-2024 0600-2000		
4. BASIC RADIO CHANNEL UTILIZATION								
Ch #	Channel Name	Assignment	RX Frequency	RX Tone/NAC	TX Frequency	TX Tone/NAC	Mode Digital (D) Analog (A)	Remarks
1	CMD1	Command	170.0000	162.2	166.6750	162.2	A	Sheep Mountain
2	CMD2	Command	170.6875	162.2	166.5750	162.2	A	Stine Mountain
3	FS RPT		173.0875	167.9	165.7250	167.9	A	Odell FS Repeater
4	FS DIR		173.0875	0.000	173.0875	123.0	A	Big Hole Direct
5	VPOND PK	Dillon Dispatch	173.0875	0.000	165.7250	103.5	A	FS Vipond Park
6	R1SOARPT	Tactical RPT	173.1875	136.5	164.3875	136.5	A	FS Scene Of Action (SOA) RPT
7	TAC7	DIV A	168.0500	162.2	168.0500	162.2	A	Division A
8	TAC8	DIV M	168.2000	162.2	168.2000	162.2	A	Division M
9	TAC9	DIV W	168.6000	162.2	168.6000	162.2	A	Division W
10	TAC10	DIV Z	166.7250	162.2	166.7250	162.2	A	Division Z
11	TAC11	Structure Group	166.7750	162.2	166.7750	162.2	A	Structure Group
12	TAC12	Unassigned	168.2500	162.2	168.2500	162.2	A	
13	VMED28	Medical	155.3400	0.000	155.3400	156.7	A	Medical/Ambulance
14	A/G PRI	Air to Ground Pri	168.5250	0.000	168.5250	0.000	A	Primary Air to Ground
15	A/G SEC	Air to Ground Sec	169.8125	0.000	169.8125	0.000	A	Secondary Air to Ground
16	AIRGUARD	EMERGENCY USE ONLY	168.6250	0.000	168.6250	110.9	A	EMERGENCY USE ONLY
ICS-205		Walter Warrick		Current Clone Version: 080924		ALWAYS POST A HUMAN REPEATER TO RELAY MESSAGES OUT OF AREAS WHERE YOU HAVE INADEQUATE COMMUNICATIONS		
Prepared By:		COML		DPH/GPH: Press & Hold # Key to Check Version		P-150/S/KNG/BKR: Look at Zone Label for Version		

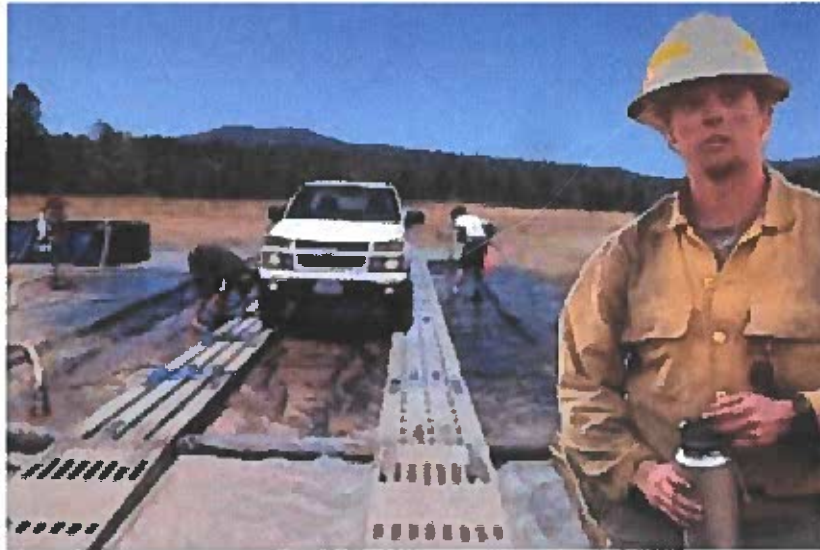
COMMUNICATIONS UNIT 24 hr phone:

208-891-8019

CONTROLLED UNCLASSIFIED INFORMATION//BASIC (CUI)

WEED WASH

INCOMING AND OUTGOING RESOURCES



In 1939, Montana passed the “Weed Control” law, which included regulations on weed seed.

A primary example of a new technology was the automobile. In 1931, the geographer Isaiah Bowman observed that “the dry western grass country” of Montana was “built on gasoline.” Bowman did not associate the “gasoline culture” of the Great Plains with the spread of weeds, but they were connected. Cars, trucks, tractors, and farm equipment provided an outstanding vehicle for weed seeds, and the machines came with an expanding network of roads that served as corridors and jumping-off places for the weed advance into the Big Sky state. Beginning in the Second World War, for example, the owners of custom combining outfits—trucks, trailers, and combines—drove north from Oklahoma, following the seasonal northerly advance of the wheat harvest. Moving from field to field, the vehicles picked up so many weed seeds that by the time they reached the heart of Montana’s grain districts they were veritable rolling collections of weed life. In the fall of 1958, the Chouteau County extension agent counted eleven kinds of weed seeds on a single combine.²⁴

One plant that spread with alarming vigor in conjunction with automobiles was spotted knapweed, a hardy Eurasian species with a tough, sinewy stalk and purple or pink blossoms that looked like cornflowers. Discovered in Ravalli County in the early twentieth century—exactly when is unclear—it was prolific and aggressive: each plant produced thousands of seeds, and each plant emitted toxins that inhibited the growth of surrounding vegetation. Human actions assisted these natural advantages. Hay, crop seeds (knapweed evidently arriving in a batch of alfalfa seed), and irrigation water carried the plant’s offspring. Logging, farming, grazing, railroads, and construction disturbed soil and opened space in which those seeds could grow. But more than anything else, automobiles and roads transformed knapweed into one of the most notorious Montana plants. On weedy prairies, fields, and roads, cars and trucks snagged seeds; wind, water, vegetation, or vibration later dislodged the tiny grains. By the late twentieth century, Montana contained nearly 12,000 miles of highways and some 66,000 miles of smaller roads, “a web of corridors” along which knapweed and other unwanted vegetation moved. By such means did knapweed expand to some 4.5 million Montana acres by the 1990s. In Missoula and Ravalli counties it grew so thickly and over such a large area that concerned citizens thought it an environmental disaster.²⁵



HUMAN RESOURCE MESSAGE

There is zero tolerance for harassment, political activities, alcohol, or federally prohibited substances on this fire incident.

It seems there has been some confusion...



Every day in the header of my messages I include the **zero tolerance** items. These items are:

1. No harassment;
2. No political activities;
3. No alcohol; and
4. No federally prohibited substances (*this includes marijuana*).

Zero tolerance means performing any of these items can get you sent home with a letter to your home unit asking that you not be sent back to a fire.

Is it worth it?

We are all here to do our job in a professional manner. Let's follow the rules and get home safely!

Debby Hassel, HRSP (979) 255-5513

hrspfire@gmail.com

\$\$\$ GROUSE FINANCE PROCEDURES \$\$\$

Finance email: **2024.grouse.finance@firenet.gov**

Finance Phone Numbers

Time (Personnel and Equipment): 208-914-1873

Comp/Claims: 208-891-6348

Finance check-in: Please email electronic copies of the following documents as applicable:

- Contract/Agreement/State Cooperative Agreement
- Casual Hire Form
- Resource Order
- Crew Manifest
- Travel CTRs and Shift Tickets

Submitting Time: Please email completed CTRs and/or Shift Tickets signed by immediate supervisor **every 2 days, after submitting travel time**. Include Resource Order Number in the subject line.

- Electronic CTRs and Shift Tickets are available through the QR code on the IAP cover.
- **A legible photo** is acceptable.

**** All time must include required justifications for hazard pay, compensable meal breaks, or excess hours. Don't forget name, RO# and date. Include a valid phone # and email.**

Finance demob: Please **Email or call** Finance to notify them that you are demobing.

- Provide email and phone number on **final** CTR and/or Shift Ticket.
- Email electronic copies of your final CTRs and Shift Tickets, including travel time. Include in the email they are final documents for the incident.
- Finance will email final time documents (including OF-288/286) electronically for review and signatures.

Medical

Please work directly with the **Medical Unit Leader**. The MEDL will work with Finance to ensure forms are available and completed.

Damages or Claims

Do not wait until day of demob. An electronic OF-289, *Property Loss or Damage Report*, is available through the QR Code on the IAP cover. Contact Comp/Claims (or FSC) with questions. Include witness statements, signatures and **your contact info**.

DEMOB TIPS

Airline Flights

Contact DEMOB early to arrange your flight home. It can take up to 72 hours to process.

Weedwash

All vehicles that leave paved roads must go through weedwash located at the junction of highways 43 and 73 at the H-J.

Crew Swaps & Extensions

All crew swaps and extension requests must be initiated through your fire supervisor at least 72 hours prior to your scheduled demobilization and submitted through your respective section chief.

Demob Steps

1. Return all supplies, radios, etc. that were checked out.
2. Submit time for all personnel and equipment to finance.
3. All vehicles that have been to the fireline must go through a car/weed wash.
4. Receive a copy of your OF-288 and/or other financial documentation from Finance.
5. Complete the Demob Checkout Sheet using the QR Code located on the IAP
6. Once you submit the Demob Checkout Sheet you are released and may travel home.

Contact Demob

If you have demob, airline, flight, extensions, or crew swap questions you can contact demob at 605.381.2521 or 2024.grouse.demob@firenet.gov

Safe Travels!

DEMOB LIST

DEMOB 8/12/2024

Request #	Item Code	Resource Name
A-26.1	HMGB	CORTES CASTRO, CHRITSIAN
A-26.2	HECM	SWEENEY, JACOB DANIEL
C-13	CRW1	CRW1 - BITTERROOT IHC
E-32	VUTV	BUTTE FD UTV 1
O-17	TFLD	BURKE, EVAN W
O-142.18	COML	MILLER, DAVE
O-142.24	RESL	FORGENSI, JUSTIN MAX
O-142.57	OSCC	SHARPE, RYAN

DEMOB 8/13/2024

Request #	Item Code	Resource Name
E-25	POT1	WELBORN AQUA HAUL & FIRE SERVICES
E-30	WTS2	ECM DISTRIBUTING LLC - 455634
O-142.36	RESL	LANCASTER, RICHARD
O-152	TFLD	GORWITZ, BRIAN
O-154	THSP	WALKER, RUSSELL JEFFREY

DEMOB 8/14/2024

Request #	Item Code	Resource Name
A-20.4	UASP	SNIPES, ERIC STEVEN
A-20.5	UASP	SMITH, MATTHEW G
E-2	ENG6	BRIAN CAHOON - D00612
E-26	GWT3	BROWN SEPTIC, INC. - 503082
O-142.67	AOBD	LINGENFELTER, MATT

CHARACTERISTICS OF A GOOD TRAINER/TRAINEE!



TRAINER

- ✓ Adapt to trainee's needs
- ✓ Be patient
- ✓ Delegate and trust your trainee
- ✓ Be accessible and approachable
- ✓ Listen to trainee's questions
- ✓ Be knowledgeable

TRAINEE

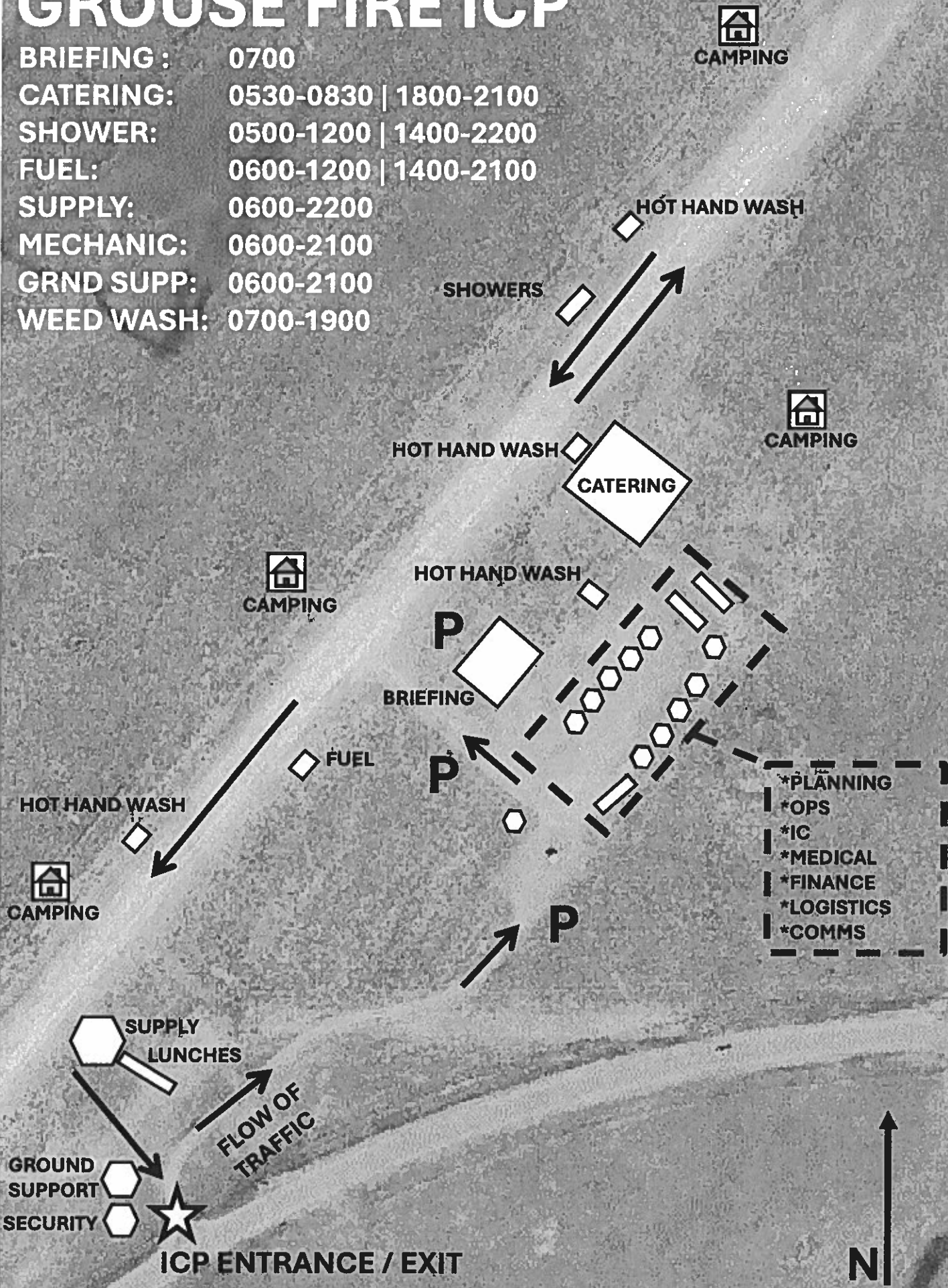
- ✓ Request an evaluation
- ✓ Ask questions
- ✓ Take required classes as soon as you can
- ✓ Make sure your task book has all the appropriate signatures/dates
- ✓ Communicate your ideas and thoughts
- ✓ Be adaptable

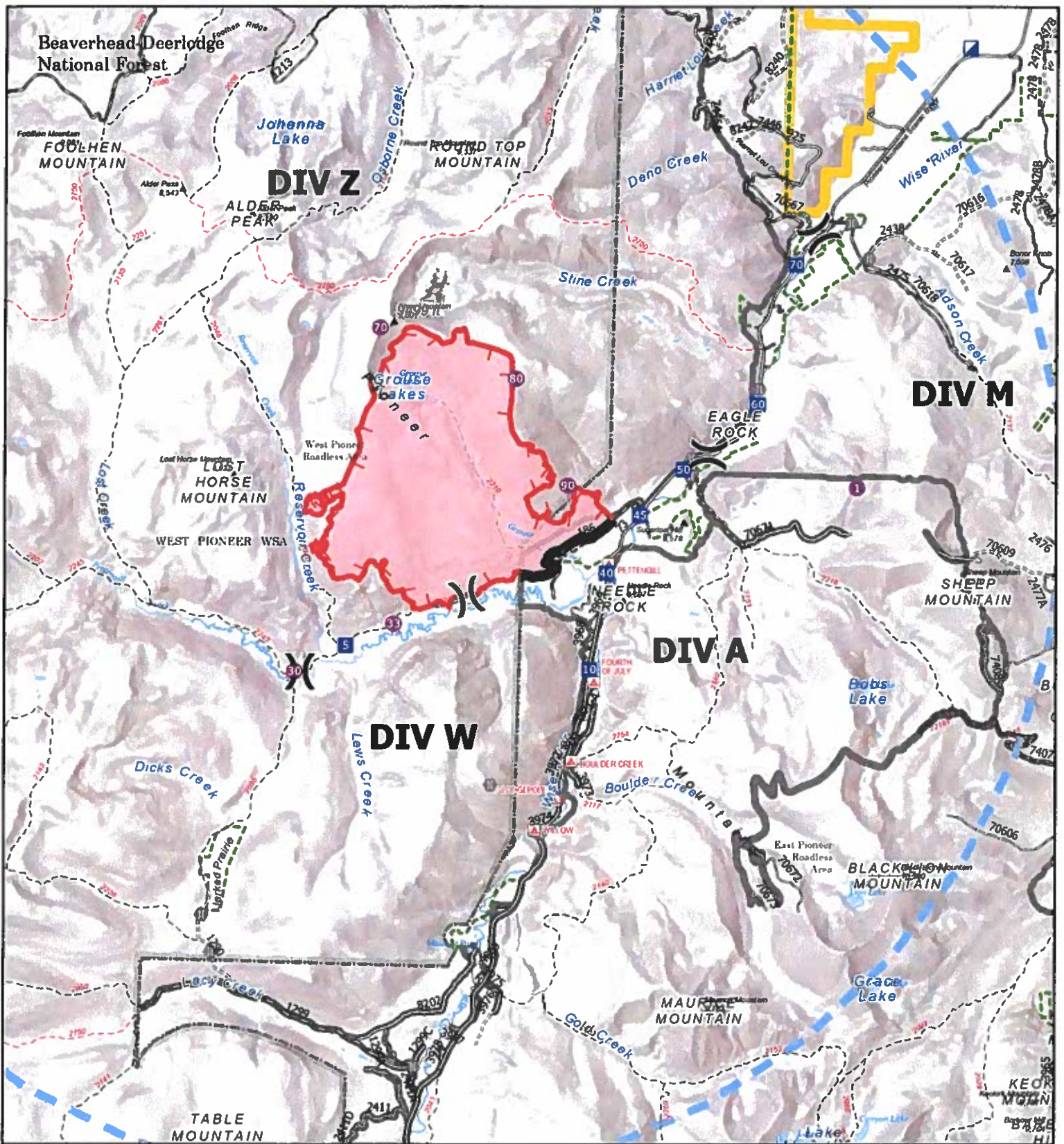
Wendy Fischer 970-759-9610
Wendy_fischer@firenet.gov

Carolyn Blatz 573-778-2810
carolyn_blatz@firenet.gov

GROUSE FIRE ICP

BRIEFING : 0700
CATERING: 0530-0830 | 1800-2100
SHOWER: 0500-1200 | 1400-2200
FUEL: 0600-1200 | 1400-2100
SUPPLY: 0600-2200
MECHANIC: 0600-2100
GRND SUPP: 0600-2100
WEED WASH: 0700-1900





IAP

Grouse
 MT-BDF-246327
 08/12/2024 Day

4,157 acres at 08/10/2024 @ 0145 MDT
 0 0.250.5 1 1.5 2



1" = 100,000' | RM CIMT 3 | 8/11/2024 1955
 Acres from IR
 North American 1983 Datum



Wildfire Daily Fire Perimeter	Drop Point
Contained	Trail
Uncontained	National Designated Trail
Temporary Flight Restriction	USFS Roadless Areas
Hellsport	FS Wilderness Study Area Boundary
Division Break	Forest Service Land
Incident Command Post	Bureau of Land Management Lands



Current Maps

First source of supply is Cache, shaded blocks indicate items available thru Northern Rockies Cache. Items requiring an approved Property Loss and Damage form are in a separate list at the bottom.												
PART	034/341	360/MS360	MS361	MS362	038/381	044/MS440	MS441	460/MS461	MS462	0640/650	MS660	MS680
Spark Plug (NFES# 000344)	Bosch WSR6F NGK BPMR7A Champion RC16Y	Bosch WSR6F NGK BPMR7A Champion RC16Y	Bosch WSR6F NGK BPMR7A Champion RC16Y	Bosch WSR6F NGK BPMR7A Champion RC16Y	Bosch WSR6F NGK BPMR7A Champion RC16Y	Bosch WSR6F NGK BPMR7A Champion RC16Y	Bosch WSR6F NGK BPMR7A Champion RC16Y	Bosch WSR6F NGK BPMR7A Champion RC16Y	Bosch USR7AC NGK CMR6H	Bosch WSR6F NGK BPMR7A Champion RC16Y	Bosch WSR6F NGK BPMR7A Champion RC16Y	Bosch WSR6F NGK BPMR7A Champion RC16Y
Needle Cage Bearing (NFES# 066565)	9512-933-2380	9512-933-2380	9512-933-2380	9512-933-2380	9512-933-2380	9512-933-2380	9512-933-2380	9512-933-2380	9512-933-2380	9512-933-2382	9512-933-2382	9512-933-2382
Retaining Washer for Rim Sprocket	0000-958-1022	0000-958-1022	0000-958-1022	0000-958-1022	0000-958-1022	0000-958-1022	0000-958-1022	0000-958-1022	0000-958-1032	0000-958-1032	0000-958-1032	0000-958-1032
E Clip (NFES# 066517)	9460-624-0801	9460-624-0801	9460-624-0801	9460-624-0801	9460-624-1001	9460-624-0801	9460-624-0801	9460-624-0801	9460-624-0801	9460-624-0801	9460-624-0801	9460-624-1001
Fuel Filter	0000-350-3504	0000-350-3504	0000-350-3504	0000-350-3504	0000-350-3504	0000-350-3504	0000-350-3504	0000-350-3504	0000-350-3504	0000-350-3504	0000-350-3504	0000-350-3504
Air Filter - HD (NFES# 066756)	1125-120-1626	1125-120-1612	1125-120-1612	1140-140-4401	1119-120-1611	0000-140-4402	0000-120-1654	0000-120-1654	1142-140-4402	0000-140-4402	0000-140-4402	0000-140-4402
Pre Filter - OEM	N/A	N/A	N/A	N/A	1119-120-1500	0000-141-0300	0000-141-0300	0000-141-0300	N/A	0000-141-0300	0000-141-0300	0000-141-0300
Bar Nut (NFES# 06661)	0000-955-0801	0000-955-0801	0000-955-0801	0000-955-0801	0000-955-0801	0000-955-0801	0000-955-0801	0000-955-0801	0000-955-0803	0000-955-0801	0000-955-0801	0000-955-0803
Inner Slide Plate	1122-664-1000	1122-664-1000	1122-664-1000	1122-664-1000	1119-664-1000	1128-664-1001	1138-664-1000	1128-664-1001	1128-664-1001	1128-664-1001	1128-664-1001	1128-664-1001
STIHL RAPID - Super (RS)												
Chain 3/8" PITCH - .050" GA - DR	3623-005-0072	3623-005-0072	3623-005-0072	3623-005-0072	3623-005-0072	3623-005-0072	3623-005-0072	3623-005-0072	3623-005-0072	3623-005-0072	3623-005-0072	3623-005-0072
20" - 72 DR	3676-005-0084	3676-005-0084	3676-005-0084	3676-005-0084	3676-005-0084	3676-005-0084	3676-005-0084	3676-005-0084	3676-005-0084	3676-005-0084	3676-005-0084	3676-005-0084
25" - 84 DR (NFES# 006500)	3676-005-0091	3676-005-0091	3676-005-0091	3676-005-0091	3676-005-0091	3676-005-0091	3676-005-0091	3676-005-0091	3676-005-0091	3676-005-0091	3676-005-0091	3676-005-0091
28" - 91 DR	N/A	N/A	N/A	N/A	N/A	N/A	N/A	N/A	N/A	N/A	N/A	N/A
32" - 105 DR	N/A	N/A	N/A	N/A	N/A	N/A	N/A	N/A	N/A	N/A	N/A	N/A
STIHL RAPID - Super - Full Skip (RSF)												
Chain 3/8" PITCH - .050" GA - DR	N/A	3676-005-0072	3676-005-0072	3676-005-0072	3676-005-0072	3676-005-0072	3676-005-0072	3676-005-0072	3676-005-0072	3676-005-0072	3676-005-0072	3676-005-0072
20" - 72 DR	3676-005-0084	3676-005-0084	3676-005-0084	3676-005-0084	3676-005-0084	3676-005-0084	3676-005-0084	3676-005-0084	3676-005-0084	3676-005-0084	3676-005-0084	3676-005-0084
25" - 84 DR	3676-005-0091	3676-005-0091	3676-005-0091	3676-005-0091	3676-005-0091	3676-005-0091	3676-005-0091	3676-005-0091	3676-005-0091	3676-005-0091	3676-005-0091	3676-005-0091
28" - 91 DR	N/A	N/A	N/A	N/A	N/A	N/A	N/A	N/A	N/A	N/A	N/A	N/A
32" - 105 DR	N/A	N/A	N/A	N/A	N/A	N/A	N/A	N/A	N/A	N/A	N/A	N/A
Bar oil: Quantity - Gallon	NFES # 1880											
Bar oil: Quantity - Quart	NFES # 1869											
2 Cycle Oil: Quantity - Quart	NFES # 0841											

The following parts require an approved Property Loss & Damage form prior to ordering:

Guide Bars - 3/8" - .050" GA (STIHL ROLLONMATIC - ES)												
20"	3003-000-8822	3003-000-8822	3003-000-8822	3003-000-8822	3003-000-8822	3003-000-8822	3003-000-8822	3003-000-8822	3003-000-8822	3003-000-8822	3003-000-8822	3003-000-8822
25" (NFES# 066584)	N/A	3003-000-8830	3003-000-8830	3003-000-8830	3003-000-8830	3003-000-8830	3003-000-8830	3003-000-8830	3003-000-8830	3003-000-8830	3003-000-8830	3003-000-8830
28"	N/A	N/A	N/A	N/A	N/A	N/A	N/A	N/A	N/A	N/A	N/A	N/A
32"	N/A	N/A	N/A	N/A	N/A	N/A	N/A	N/A	N/A	N/A	N/A	N/A
Rim Sprocket Kit 3/8 - 7T	1125-007-1040	1125-007-1023	1125-007-1023	1125-007-1023	1125-007-1023	1125-007-1023	1125-007-1023	1125-007-1023	1125-007-1023	1125-007-1023	1125-007-1023	1125-007-1023
Clutch Drum	0000-642-1231	0000-642-1231	0000-642-1231	0000-642-1231	0000-642-1231	0000-642-1231	0000-642-1231	0000-642-1231	0000-642-1231	0000-642-1231	0000-642-1231	0000-642-1231
Rim Sprocket: 3/8 TT (NFES# 066652)												
Rim sprocket kit 3/8 - 8T	N/A	N/A	N/A	N/A	N/A	N/A	N/A	N/A	N/A	N/A	N/A	N/A
Clutch Drum	0000-642-1216	0000-642-1216	0000-642-1216	0000-642-1216	0000-642-1216	0000-642-1216	0000-642-1216	0000-642-1216	0000-642-1216	0000-642-1216	0000-642-1216	0000-642-1216
Rim Sprocket 3/8 - 8T	1127-160-2050	1125-160-2005	1125-160-2005	1138-160-2010	1119-160-2000	1128-160-2004	1138-160-2010	1128-160-2004	1147-160-2000	1122-160-2005	1127-160-2002	1124-160-2005
Chain Adjuster Kit	1125-007-1036	1125-007-1021	1125-007-1021	1125-007-1021	1118-664-1600	1125-007-1021	1125-007-1021	1125-007-1021	1125-007-1021	1125-007-1021	1125-007-1021	1124-007-1008
Bump Strip	1121-648-6610	1121-648-6610	1121-648-6610	1121-648-6610	1120-664-1500	1121-648-6610	1121-648-6610	1121-648-6610	1121-648-6610	1121-648-6610	1121-648-6610	1121-648-6610
Starter Rope W/handle	1128-190-3400	1128-190-3400	1128-190-3400	1128-190-3400	1128-190-3400	1128-190-3400	1128-190-3400	1128-190-3400	1128-190-3400	1128-190-3400	1128-190-3400	1128-190-3400
Worm Gear (Oilier)	1125-640-7110	1125-640-7110	1125-640-7110	1128-640-7112	1119-642-1501	1128-640-7112	1128-640-7112	1128-640-7112	1128-640-7112	1122-640-7105	1122-640-7105	1124-640-7512
Manifold Boot	1125-141-2200	1125-141-2200	1125-141-2200	1140-140-2503	1119-140-2500	1128-141-2204	1138-140-2508	1128-141-2204	1147-141-2200	1122-141-2200	1122-141-2201	1124-141-2202



Medical Plan (206 WF)

ROCKY MOUNTAIN INCIDENT MANAGEMENT

1. Incident / Project Name		2. Operational Period				
Grouse Fire		Date/Time: 8/12/2024 0600-2000				
3. Ambulance Services						
Name	Address	Phone and Emergency Frequency		Advanced Life Support (ALS) YES NO		
A1 Ambulance	Butte, MT	406-490-3130		X (most of the time)		
Anaconda Fire (can rendezvous at HWY 569/HWY 43)	Anaconda, MT	406-463-2164		X		
4. Air Ambulance Services						
Name	Phone	Type of Aircraft & Capability				
Lifelight	800-232-0911 Order through Dillon Interagency Dispatch	ALS with critical care Night Vision (will fly at night)				
Air Idaho Rescue (Air Methods) Air 4	877-818-5553 Order through Dillon Interagency Dispatch	ALS with critical care Night Vision (will fly at night)				
4MA Forest IA	Order through Dillon Interagency Dispatch	Bell 407 HP Litter Capable (will NOT fly at night)				
2HX Grouse Fire	Order through Dillon Interagency Dispatch	Bell 429 Hoist Capable (will NOT fly at night)				
***** TRAVEL TIME FROM ICP*****						
Name Complete Address	LAT: DD° MM.MMM'N LONG: DD° MM.MMM'W	Travel Time From ICP Air Ground		Phone	Helipad Yes /No	Level of Care
St Vincent Regional 1233 N 30th St Billings, MT	Lat: 48° 47.658' N Long: 108° 31.003' W	1 hr	4 hrs	406-657-7000	YES	Level 1 Trauma Cardiac & Cath Lab Stroke Center
St Patrick Hospital 500 W Broadway St Missoula, MT	Lat: 46° 52.533' N Long: 114° 0.001' W	45 min	2.25 hrs	406-543-7271	YES	Level 2 Trauma Cardiac & Cath Lab Stroke Center
St James Healthcare 400 S Clark St Butte, MT	Lat: 46° 0.512' N Long: 112° 32.742' W	35 min	45 min	406-723-2585	YES	Level 3 Trauma Cardiac Certified Stroke Certified
Barrett Hospital 600 HWY 91 S Dillon, MT 59725	Lat: 45° 12.097' N Long: 112° 38.839' W	40 min	1 hr	406-683-3000	YES	Level 4
Community Hosp of Anaconda 401 W Pennsylvania ST Anaconda, MT	Lat: 46° 7.950' N Long: 112° 57.427' W	35 min	50 min	406-563-8500	YES	Local Emergency Room Only
*Travel times are from Grouse Fire ICP to the facility and DO NOT include response time to the incident.						
6. Division Branch Group						
ALPHA	EMS Responders & Capabilities:	E-3 AMBO 1 - Andrew Ellis O-170 REMS 5 - Ben Lewis O-166 MEDIC 6 - Trenton Harper				
	Equipment Available on Scene:	4x4, UTV, ALS Kit, Rope Rescue, ALS Ambulance, Oxygen				
	Medical Emergency Channel:	COMMAND A/G: VMED 28				
MIKE	EMS Responders & Capabilities:	O-59 MEDIC 3 - John Baker				
	Equipment Available on Scene:	4x4, ALS Kit				
	Medical Emergency Channel:	COMMAND A/G: VMED 28				
WHISKEY	EMS Responders & Capabilities:	O-58 MEDIC 4 - Becca Wallace (Spiked with Kanlksu Mod)				
	Equipment Available on Scene:	4x4, ALS Kit				
	Medical Emergency Channel:	COMMAND A/G: VMED 28				
ZULU	EMS Responders & Capabilities:	UNSTAFFED				
	Equipment Available on Scene:					
	Medical Emergency Channel:	COMMAND A/G: VMED 28				
STRUCTURE	EMS Responders & Capabilities:	NO MEDICAL RESOURCES ASSIGNED				
	Equipment Available on Scene:					
	Medical Emergency Channel:	COMMAND A/G: VMED 28				
	EMS Responders & Capabilities:					
	Equipment Available on Scene:					
	Medical Emergency Channel:					
8. Prepared by: (Medical Unit Leader)		Date	Reviewed by: (Safety Officer)		Date	
/s/ Dan Leone MEDL		8/11/2024	/s/ Dave Day SOFC (t)		8/11/2024	

MEDICAL PLAN (ICS 206 WF)

Controlled Unclassified Information//Basic

Medical Incident Report

FOR A NON-EMERGENCY INCIDENT, WORK THROUGH CHAIN OF COMMAND TO REPORT AND TRANSPORT INJURED PERSONNEL AS NECESSARY.

FOR A MEDICAL EMERGENCY: IDENTIFY ON SCENE INCIDENT COMMANDER BY NAME AND POSITION AND ANNOUNCE "MEDICAL EMERGENCY" TO INITIATE RESPONSE FROM IMT COMMUNICATIONS/DISPATCH.

Use the following items to communicate situation to communications/dispatch.

1. CONTACT COMMUNICATIONS / DISPATCH (Verify correct frequency prior to starting report)

Ex: "Communications, Div. Alpha. Stand-by for Emergency Traffic."

2. INCIDENT STATUS: Provide incident summary (including number of patients) and command structure.

Ex: "Communications, I have a Red priority patient, unconscious, struck by a falling tree. Requesting air ambulance to Forest Road 1 at (Lat./Long.) This will be the Trout Meadow Medical, IC is TFLD Jones. EMT Smith is providing medical care."

Severity of Emergency / Transport Priority	<input type="checkbox"/> RED / PRIORITY 1 Life or limb threatening injury or illness. Evacuation need is IMMEDIATE <i>Ex: Unconscious, difficulty breathing, bleeding severely, 2° - 3° burns more than 4 palm sizes, heat stroke, disoriented.</i> <input type="checkbox"/> YELLOW / PRIORITY 2 Serious injury or illness. Evacuation may be DELAYED if necessary. <i>Ex: Significant trauma, unable to walk, 2° - 3° burns not more than 1-3 palm sizes.</i> <input type="checkbox"/> GREEN / PRIORITY 3 Minor injury or illness. Non-Emergency transport <i>Ex: Sprains, strains, minor heat-related illness.</i>	
Nature of Injury or Illness & Mechanism of Injury		Brief Summary of Injury or Illness <i>(Ex: Unconscious, Struck by Falling Tree)</i>
Transport Request		Air Ambulance / Short Haul/Hoist Ground Ambulance / Other
Patient Location		Descriptive Location & Lat. / Long. (WGS84)
Incident Name		Geographic Name + "Medical" <i>(Ex: Trout Meadow Medical)</i>
On-Scene Incident Commander		Name of on-scene IC of incident within an incident <i>(Ex: TFLD Jones)</i>
Patient Care		Name of Care Provider <i>(Ex: EMT Smith)</i>

3. INITIAL PATIENT ASSESSMENT: Complete this section for each patient as applicable (start with the most severe patient)

Patient Assessment: See IRPG page 106

Treatment:

4. TRANSPORT PLAN:

Evacuation Location (if different): (Descriptive Location (drop point, intersection, etc.) or Lat. / Long.) Patient's ETA to Evacuation Location:

Helispot / Extraction Site Size and Hazards:

5. ADDITIONAL RESOURCES / EQUIPMENT NEEDS:

Example: Paramedic/EMT, Crews, Immobilization Devices, AED, Oxygen, Trauma Bag, IV/Fluid(s), Splints, Rope rescue, Wheeled litter, HAZMAT, Extrication

6. COMMUNICATIONS: Identify State Air/Ground EMS Frequencies and Hospital Contacts as applicable

Function	Channel Name/Number	Receive (RX)	Tone/NAC *	Transmit (TX)	Tone/NAC *
COMMAND					
AIR-TO-GRND					
TACTICAL					

7. CONTINGENCY: Considerations: If primary options fail, what actions can be implemented in conjunction with primary evacuation method? Be thinking ahead.

8. ADDITIONAL INFORMATION: Updates/Changes, etc.

REMEMBER: Confirm ETA's of resources ordered. Act according to your level of training. Be Alert. Keep Calm. Think Clearly. Act Decisively.