



Incident Action Plan

Grouse Fire

MT-BDF-246327, P1R4SM24 (0102)

Tuesday, August 13, 2024

0600-2000

Safety Starts Here

Diligence

We have all heard the word being thrown around. Personally, I reserve the word COMPLACENCY for the appropriate places and time. Trying not to harp on this too much as it really has a strong meaning. It just gets overused at times, and we should reserve it to raise awareness. We are all aware that there are plenty of active fires nationally and that the one we are currently on is starting to enter the "glide path" phase. Please... and we ask please do not let the distractions and external factors pull your head out of the game. Simply put, if we review the common denominators of injuries and fatalities on fires, one that stands out is "On smaller or less active areas of the fire". So please, for the remainder of the time we have together, keep your head in the game, get home safe (when the time comes) and be ready for the next one. Be **DILIGENT**.

Incident Commanders
Bill Waln, Phil Daniels
Jay Mickey (T)



Available at this site: Remote Incident Check-in, IAP's, Maps, Finance, Fillable-CTR's, Training, Demob, Shift Tickets and General Messages

INCIDENT OBJECTIVES	1. Incident Name GROUSE FIRE	2. Date Prepared August 12, 2024	3. Time 1400		
4. Operational Period: August 13, 2024 Day Operations 0600-2000					
<p>Leaders Intent: It is the Incident Commander's expectation that we as an organization will meet the following leader's intent, as well as the incident objectives identified below:</p> <ul style="list-style-type: none"> • Ensure all incident strategies and actions reflect a commitment to public, responder, and aviation safety through use of an adaptive risk management process as outlined in the IRPG and the aviation risk assessment process. • Treat all incident personnel, cooperators, and local public with dignity and respect, and create a "no tolerance" atmosphere for harassment, alcohol, or illegal drug use. • Respect the integrity of the cultural resources in and adjacent to the incident, coordinating all operational activities with the Forest Archaeologist. <p>Incident Objectives:</p> <ul style="list-style-type: none"> • Continually provide for emergency personnel and public safety through the utilization of a deliberate, risk- informed approach, with avenues for feedback from personnel. • Use a full suppression strategy with a combination of direct, indirect, and point zone protection tactics where reasonable to protect the identified critical values of risk. • Develop contingency plans to identify management actions to be taken if the fire threatens Pioneer Scenic Byway, Jerked Prairie, and/or Highway 43. • Foster and maintain relationships with the public, cooperators, and vested parties. • Ensure coordinated, timely, and accurate release of information to the public and land managers, including the BLM and the Montana DNRC, utilizing the full suite of platforms. • Maintain fiscal accountability by making good risk-informed decisions. • Provide for a smooth transition and adjust organizational resources to meet current and forecasted tactical operations. 					
8. Attachments (X if attached)					
<input checked="" type="checkbox"/>	Cover / Safety Message	<input checked="" type="checkbox"/>	ICS 203 Organization Assignment List	<input checked="" type="checkbox"/>	Fire Weather Forecast
	Fire Behavior Forecast	<input checked="" type="checkbox"/>	ICS 204 Division Assignment Lists	<input checked="" type="checkbox"/>	ICS 220 Air Operations Summary
<input checked="" type="checkbox"/>	ICS 205 Incident Radio Comm Plan			<input checked="" type="checkbox"/>	Resource Advisor Message
<input checked="" type="checkbox"/>	Human Resource Message	<input checked="" type="checkbox"/>	Finance Message	<input checked="" type="checkbox"/>	Demob Tips
<input checked="" type="checkbox"/>	Demob List	<input checked="" type="checkbox"/>	Training Message	<input checked="" type="checkbox"/>	Incident Map
<input checked="" type="checkbox"/>	NR Chainsaw Parts Order Form	<input checked="" type="checkbox"/>	ICS 206 Medical Plan	<input checked="" type="checkbox"/>	Medical Incident Report – 8 Line
9. Prepared by PSCC PETER BARTH <i>Peter Barth</i>			9. Approved by (Incident Commander) WALN / DANIELS / MICKEY (T) <i>Bill Walton</i>		

ORGANIZATION ASSIGNMENT LIST

Incident Name		Operations Section		
<h1>Grouse Fire</h1>		Field	Brandon "Bones" Bonenberger	
		Planning	Troy Mueller, Joe Duran (T)	
		Strategic	Rodney Redinger	
Date Prepared	Time Prepared	<h3>Division/Group</h3>		
8/12/2024	1900			
Operational Period				
8/13/2024 0600 to 8/13/2024 2000				
Incident Commander and Staff		Alpha	DIVS	
Incident Commander	Bill Waln, Jay Mickey (T)	Mike	DIVS	Blake Stewart, Bela Harrington (T)
Deputy	Phil Daniels	Whiskey	DIVS	Chris Rokosh, Zach Valentiner (T)
Safety Officer	Brandon Hoffman Jason Miller (T), David Day (T)	Zulu	DIVS	Geoff Harrison, Alex Doud (T)
Medical Unit	Dan Leone, Kristina Bastian (T)	Structure	Group	Unstaffed
Liaison Officer	Tim Flanary			Joe Tjaden
Information Officer	Cass Cairns			
Human Resource Specialist	Debby Hassel (v)			
Agency Representatives		Air Operations Branch		
BDNF	Tim Lahey, Sara Rouse (T)	Air Operation Branch Director	Matt Lingenfelter	
BLM	Lindsey Babcock, Brandy Janzen (T)	Air Support Group Supervisor	Randy Gilbert (T)	
MT-DNRC	Tim Egan	Air Tactical Group Supervisor		
Resource Advisor	Ayme Swartz	Helibase Manager	Matt Esser (T)	
		Finance Section		
		Chief	Kayla Davin	
		Time Unit	Natasha Goedert (T)	
		Cost/Comp Unit	Annette Pintado (v)	
		Comp/Claims	Arlene Tucker (T)	
Planning Section				
Chief	Peter Barth			
Resource Unit	Kellie Stover			
Situation Unit	Jodi Wetzstein			
Training Specialist	Wendy Fischer (v), Carolyn Blatz (T)	Logistics Section		
Check In	Carla Rumsey	Chief	Darin Gehring, Randy Spiering Jamie Rietz (T)	
Meteorologist	Mark Loeffelbein	Facilities Unit	Ish Ennis, Ken Hehr, Paul Kimpling	
Demobilization Unit	Logan Brown	Ground Support Unit	Lee Walker	
Documentation Unit	Spencer Pollock (RIST)	Communications Unit	Walter Warrick	
IT Specialist	Eric Simmons, Tyler Ward (T)	Supply Unit	Robin Brooks	
Long Term Analyst	Erin Noonan (v)	Food Unit	Wally Leander	
GIS Specialists	Sarlyn McCormick, Chris "Fern" Ferner Jennifer McKee (T)(v)	Security	Dave Tyndell	
		Ordering	Beth Youngstrom, Monty Bollock (T)	
Rick Lancaster – RESL				



Grouse Weather Forecast



FORECAST NO: 4
FORECAST FOR: Tue, Aug 13, 2024 Day
FORECAST ISSUED: Aug 12, 2024, 1800 MDT

NAME OF FIRE: Grouse
UNIT: Beaverhead-Deerlodge NF
SIGNED: //s// Mark Loeffelbein - IMET

WEATHER DISCUSSION: ...A small low pressure system will move over the area supporting a chance of thunderstorms, a little cool down, and some gusty winds. Thunderstorm chances start at 1100 and last until midnight with the highest probability of thunderstorms being between 1500 and 1800. Wind gusts to 40 mph and lighting are expected from any thunderstorms that do develop. The weather pattern will remain active supporting thunderstorm chances through the end of the week.

FORECAST FOR TODAY: Mostly Cloudy (70-100%). 30% Chance of Thunderstorms after 1100 increasing to a 60% chance between 1500 and 1800.

Max Temperature(°F):

(6500 ft.) 62-67 (4-8° Cooler) **Min RH: (6500 ft.)** 36-41% (12-18% Higher)
(8500 ft.) 56-61 (4-8° Cooler) **Min RH: (8500 ft.)** 43-48% (12-18% Higher)

20 FT Winds:

Slope/Valleys: West facing slopes West 4-8 mph after 1100, otherwise calm becoming upslope 3-6 mph after 1030.

Wise River Drainage: Channeling down drainage 4-8 Gusts to 10 mph.

Ridgetops: Southwest 10-15 Gusts to 23 mph.

CWR (0.1"+): 50% **Chance of Lighting:** 60% **LAL:** 3
Inversion: Inversions breaking around 1030. **Haines:** 4 Low

OUTLOOK FOR TONIGHT: Mostly Cloudy (70-100%). 30% Chance of Thunderstorms until 2400.

Min Temperature (°F):

Lower Elev. (6500 ft.) 38-43
Upper Elev. (8500 ft.) 45-50

Max RH:

Lower Elev. 60-65%
Upper Elev. 40-50%

20 FT Winds:

Slope/Valleys: Upslope 3-6 mph until 2200, then downslope 2-4 mph.

Ridgetops: Becoming less than 5 mph after 2200.

CWR (0.1"+): 0% **LAL:** 1 **Haines:** 4 Low

EXTENDED OUTLOOK (6500 ft.):

Wednesday...Partly Cloudy (40-60%). 30% Chance of Thunderstorms. High 65-70. RH: 33-38%. Winds: West 9 to 14 Gusts to 20 mph. Haines: 3. CWR (0.1"+): 30%

Thursday...Partly Cloudy (40-60%). 20% Chance of Thunderstorms. High 68-73. RH: 29-34%. Winds: Southwest 8 to 12 Gusts to 17 mph. Haines: 4. CWR (0.1"+): 30%

Friday...Partly Cloudy (20-40%). 20% Chance of Thunderstorms. High 71-76. RH: 27-32%. Winds: Southwest 6 to 10 Gusts to 14 mph. Haines: 5. CWR (0.1"+): 20%

PLEASE submit your weather observations to the IMET.

DIVISION/GROUP ASSIGNMENTS							
Grouse Fire				Branch		Division	
						Mike	
Operational Period							
8/13/24	0600	8/13/24	2000				
Operations Personnel:							
Operations Chief (Plans)		Troy Mueller; Joe Duran (T)		Division/Group Supervisor		Chris Rokosh; Zach Valentiner (T)	
Operations Chief (Field)		Brandon "Bones" Bonenberger		Air Attack Supervisor			
Safety Officer		Brandon Hoffman, Dave Day (T)		Medical Unit Leader		Dan Leone	
RO #	Item Code	Resource	LWD	Leader Name	# Person	Report Time/Place	Report Time/Place
O-133	TFLD		8/18	Ryan Hennager	1	ICP/0600	ICP/2000
O-144	TFLD(T)		8/19	Chris Hericks	1	ICP/0600	ICP/2000
O-119	HEQB		8/19	Ryan Williams	1	ICP/0600	ICP/2000
O-124	HEQB(T)		8/19	Joel Wealton	1	ICP/0600	ICP/2000
C-10.26	HEQB		8/21	Jacob Durham	1	ICP/0600	ICP/2000
C-11.1	HEQB(T)		8/19	Brian Buckley	1	ICP/0600	ICP/2000
E-84	FEL1	DS JR Trucking, Inc.	8/21		1	ICP/0600	ICP/2000
E-82	SKD1	DS JR Trucking, Inc.	8/21	Al Noack	2	ICP/0600	ICP/2000
E-83	SKD1	DS JR Trucking, Inc.	8/21	Rick Beeman	1	ICP/0600	ICP/2000
E-67	LOGL	Akre Logging	8/21	Dean Akre	1	ICP/0600	ICP/2000
E-80	LOGL	John Jump Trucking	8/21	Ricky Zao	2	ICP/0600	ICP/2000
E-64	LOG	Akre Logging	8/20	Kirk Randolph	1	ICP/0600	ICP/2000
E-65	LOG	Akre Logging	8/20	Brandon Clary	1	ICP/0600	ICP/2000
E-66	LOG	Akre Logging	8/20	Sam Wylie	1	ICP/0600	ICP/2000
E-108	EXC2	Grizzley Timber, LLC	8/21	Carissa Jenkins	2	ICP/0600	ICP/2000
O-135	THSP		8/19	Sam Hodge	1	ICP/0600	ICP/2000
O-59	EMPF	Medic 3	8/18	John Baker	1	ICP/0600	ICP/2000
Work Assignments:							
END STATE: Processed logs and slash from fuels treatments are moved and relocated to designated areas away from the Pioneer Mountain Scenic Byway in accordance with local Forest's request.							
PURPOSE: To remove and reduce potential fuel loading on the fire's side of the Pioneer Mountain Scenic Byway, while maintaining the natural view of the Forest for visitor's and local residents.							
TASK: Load processed logs and slash onto the appropriate transport vehicles and safely deliver the materials to the designated drop points. Processed logs to DP 50 and slash to DP 60.							
Special Instructions:							
AMBO 1 (E-3 Fireline Medics) staged at DP-40 and available for all Divisions							
Division Mike Road Guards: Bradley Davis, John Richardson, Kevin Albrecht							
Communication Summary							
See Communication Plan							
Prepared By: Kellie Stover - RESL				Signature:		22 Personnel	

DIVISION/GROUP ASSIGNMENTS

Grouse Fire	Branch		Division	
			Whiskey	
	Operational Period			
8/13/24	0600	8/13/24	2000	

Operations Personnel:

Operations Chief (Plans)	Troy Mueller; Joe Duran (T)	Division/Group Supervisor	Geoff Harrison; Alex Doud (T)
Operations Chief (Field)	Brandon "Bones" Bonenberger	Air Attack Supervisor	
Safety Officer	Brandon Hoffman, Dave Day (T)	Medical Unit Leader	Dan Leone

RO #	Item Code	Resource	LWD	Leader Name	# Person	Report Time/Place	Report Time/Place
O-143	TFLD		8/20	Rob Dunn	1	ICP/0600	ICP/2000
E-52.1	TFLD(T)		8/18	Matt Larsen	1	ICP/0600	ICP/2000
C-7	CRW2	West Coast Reforestation	8/14	Bejamin Martinez	20	ICP/0600	ICP/2000
O-115	WFM2	Kaniksu WFM	8/19	Sam Castaldo	12	ICP/0600	H30/2000
E-52	ENG6	MT-BDF E671	8/18	Molly Chiappetta	9	ICP/0600	ICP/2000
O-58	EMPF	Medic 4	8/17	Becca Wallace	1	ICP/0600	ICP/2000

Work Assignments:
 END STATE: Fire stays North of trail 2245 and East of trail 2046 to protect Jerked Prairie.
 PURPOSE: Determine the appropriate time to initiate firing operations along the 2245 and 2046 trails.
 TASK: Monitor Evans Creek and Reservoir Creek drainages.

Special Instructions:
 AMBO 1 (E-3 Fireline Medics) staged at DP-40 and available for all Divisions

Communication Summary

See Communication Plan

Prepared By: Rick Lancaster - RESL	Signature:	46 Personnel
------------------------------------	------------	-----------------

DIVISION/GROUP ASSIGNMENTS

Grouse Fire				Branch	Division
					Zulu
Operational Period					
8/13/24	0600	8/13/24	2000		

Operations Personnel:

Operations Chief (Plans)	Troy Mueller; Joe Duran (T)	Division/Group Supervisor	
Operations Chief (Field)	Brandon "Bones" Bonenberger	Air Attack Supervisor	
Safety Officer	Brandon Hoffman, Dave Day (T)	Medical Unit Leader	Dan Leone

RO #	Item Code	Resource	LWD	Leader Name	# Person	Report Time/Place	Report Time/Place
------	-----------	----------	-----	-------------	----------	-------------------	-------------------

Unstaffed							

Work Assignments:

Special Instructions:

Communication Summary

See Communication Plan

Prepared By: Kellie Stover - RESL	Signature:	Personnel
-----------------------------------	------------	-----------

DIVISION/GROUP ASSIGNMENTS							
Grouse Fire				Branch		Division	
				Operational Period		Structure	
8/13/24	0600	8/13/24	2000				
Operations Personnel:							
Operations Chief (Plans)		Troy Mueller; Joe Duran (T)		Division/Group Supervisor		Joe Tjaden	
Operations Chief (Field)		Brandon "Bones" Bonenberger		Air Attack Supervisor			
Safety Officer		Brandon Hoffman, Dave Day (T)		Medical Unit Leader		Dan Leone	
RO #	Item Code	Resource	LWD	Leader Name	# Person	Report Time/Place	Report Time/Place
O-71	TFLD		8/16	Mike Gustafson	1	ICP/0600	ICP/2000
*O-142.62	TFLD(T)		8/17	Roy Kottwitz	1	ICP/0600	ICP/2000
O-72	TFLD(T)		8/16	Fernando Quiroga	1	ICP/0600	ICP/2000
E-2	ENG6	Graywolf	8/13	Lee Grant	3	ICP/0600	ICP/2000
E-36	ENG6	Robert Bakken	8/15	Robert Bakken	3	ICP/0600	ICP/2000
E-37	ENG6	Whitegrass Fire	8/16	Cliff Whitegrass	3	ICP/0600	ICP/2000
E-69	ENG6	MT-CES E1315	8/23	Nik Russell	3	ICP/0600	ICP/2000
E-70	ENG6	Mountain Man	8/20	Brent Leyva	3	ICP/0600	ICP/2000
*E-43	DOZ3	C&C Stacking	8/15	Craig Cornell	2	ICP/0600	ICP/2000
E-13	WTS2	Blacktail Fire	8/24	Russ Sigman	1	ICP/0600	ICP/2000
Work Assignments:							
END STATE: All residential structures have been returned to pre-fire state, and all deployed defensive tools have been collected and cataloged for rapid deployment in instance of wildfire.							
PURPOSE: Return the area to pre-fire state but retain needed defensive supplies in a ready state.							
TASK: Remove deployed defensive supplies from prepared structures and place them in supply.							
Special Instructions:							
* denotes IA Resource							
AMBO 1 (E-3 Fireline Medics) staged at DP-40 and available for all Divisions							
Communication Summary							
See Communication Plan							
Prepared By: Kellie Stover - RESL				Signature:		22 Personnel	

AIR OPERATIONS SUMMARY		Prepared By:	Randy Gilbert	Prepared Date:	8/12/2024	Prepared Time:	19:00
1. INCIDENT NAME: Grouse		2. Operational Date: August 13, 2024		Start Time: 0800		3. Butte Sunset: 20:44	
4. Remarks Safety Notes, Hazards, Air ops Mission plan for density altitude (DA) and windy conditions Report any unauthorized/UAS activity Wash bucket, if moving between dipsites over Contentinal Divide. Offer constructive feedback to pilots during tactical operations Status current at time of report. Changes occur constantly.		5. Medevac Aircraft: Order through dispatch Life Flight ALS KBTM 800-232-0911 4MA Litter Capable WR Helibase 8MG CMH Short Haul HRF		6. TFRs: 4/9355 Grouse 11500' MSL 120.100 4/2588 Johnson 12000' MSL 118.725 (BRF) 4/1257 Hughes 13000' MSL 119.575 (BRF)			
7. Personnel:	Phone #	8. Frequencies:		AM	FM	9. Fixed-Wing GACC:	
AOBD	Matt Lingenfelter 970-803-4617	Nat. Flight Follow			168.6500 Rx/Tx Tn 110.9	Air Tankers/SEATS: Order through dispatch	
ASGS(T)	Randy Gilbert 406-925-3779	Grouse A/G Primary			168.5250		
HEBM (T)	Matt Esser 605-517-1505	Grouse A/G Secondary			169.8125		
Dillon Dispatch	Aircraft Desk 406-683-3939	Grouse A/A TFR		120.100		Lead Plane/ASM: Order through dispatch	
		Grouse A/A Rotor		124.600			
		IA A/G 29			166.9000		
		IA A/G 26			166.6875		
		IA A/A Primary		119.625		Air Attack: Order through dispatch	
4MA	Nick Plovanic 406-366-0179	IA A/A Secondary		134.150			
5GE	Rich Reneau 406-493-5799	VMED 28 (TAN)			155.340 Tx Tn 156.7		
1HT	Joel Anderson 208-413-1602	Medical WHITE			155.280 Tx Tn 156.7	Helicopters GACC: Order through dispatch	
2AC	Jerrid Silva 406-381-5963	DNRC A/G Yellow		151.2200		T1 Avail GACC Lend/Lease	
0PJ	Ricky Cox 601-527-7360	DNRC A/G Orange		151.4000			
2HX	Josh Quinn 352-933-1613						
5BD	Jessica Hunter 208-630-4031					SMJK GACC: Order through dispatch	
HELICOPTERS/UAS							
FAA N#	Call Sign	Make/Model	Type	Base	Available	Remarks	
N144MA	4MA	Bell 407HP	3	WRH	830	Committed Forest IA	
N52HX	2HX	Bell 429	3	KBTM	830	Grouse	
N205GE	5GE	UH-1H	2	KBTM	930	Restricted/Committed Forest IA	
N721HT	1HT	S-64	1	KBTM	930	Grouse/Tanked	
N172AC	2AC	S-64	1	KBTM	930	Grouse/Tanked	
N810PJ	0PJ	UH-60A	1	KBTM	930	NRGA Support/Bucket	
N205BD	5BD	Bell 205A++	2	KBTM	930	NRGA Support/Bucket	
UAS T3	UR-32	Alta X	3	Grouse	TBD	Grouse PSD/IR	
Notes/Remarks							
Flight follow through appropriate dispatch until contact has been made on the incident. Then flight follow local.							
Cost Summarys randy.j.gilbert@usda.gov/Buttehb24@gmail.com							

CONTROLLED UNCLASSIFIED INFORMATION//BASIC (CUI)

INCIDENT RADIO COMMUNICATIONS PLAN		1. INCIDENT NAME		2. DATE/TIME PREPARED		3. OPERATIONAL PERIOD DATE/TIME		
ICS-205		Grouse Fire		08-12-2024 1500		08-13-2024 0600-2000		
4. BASIC RADIO CHANNEL UTILIZATION								
Ch #	Channel Name	Assignment	RX Frequency	RX Tone/NAC	TX Frequency	TX Tone/NAC	Mode Digital (D) Analog (A)	Remarks
1	CMD1	Command	170.0000	162.2	166.6750	162.2	A	Sheep Mountain
2	CMD2	Command	170.6875	162.2	166.5750	162.2	A	Stine Mountain
3	FS RPT		173.0875	167.9	165.7250	167.9	A	Odell FS Repeater
4	FS DIR		173.0875	0.000	173.0875	123.0	A	Big Hole Direct
5	VPOND PK	Dillon Dispatch	173.0875	0.000	165.7250	103.5	A	FS Vipond Park
6	R1SOARPT	Tactical RPT	173.1875	136.5	164.3875	136.5	A	FS Scene Of Action (SOA) RPT
7	TAC7	DIV A	168.0500	162.2	168.0500	162.2	A	Division A
8	TAC8	DIV M	168.2000	162.2	168.2000	162.2	A	Division M
9	TAC9	DIV W	168.6000	162.2	168.6000	162.2	A	Division W
10	TAC10	DIV Z	166.7250	162.2	166.7250	162.2	A	Division Z
11	TAC11	Structure Group	166.7750	162.2	166.7750	162.2	A	Structure Group
12	TAC12	Unassigned	168.2500	162.2	168.2500	162.2	A	
13	VMED28	Medical	155.3400	0.000	155.3400	156.7	A	Medical/Ambulance
14	A/G PRI	Air to Ground Pri	168.5250	0.000	168.5250	0.000	A	Primary Air to Ground
15	A/G SEC	Air to Ground Sec	169.8125	0.000	169.8125	0.000	A	Secondary Air to Ground
16	AIRGUARD	EMERGENCY USE ONLY	168.6250	0.000	168.6250	110.9	A	EMERGENCY USE ONLY
ICS-205	Prepared By:	Walter Warrick	Current Clone Version:		080924		ALWAYS POST A HUMAN REPEATER TO RELAY MESSAGES OUT OF AREAS WHERE YOU HAVE INADEQUATE COMMUNICATIONS	
		COML	DPH/GPH:		Press & Hold # Key to Check Version			
			P-150/S/KNG/BKR:		Look at Zone Label for Version			

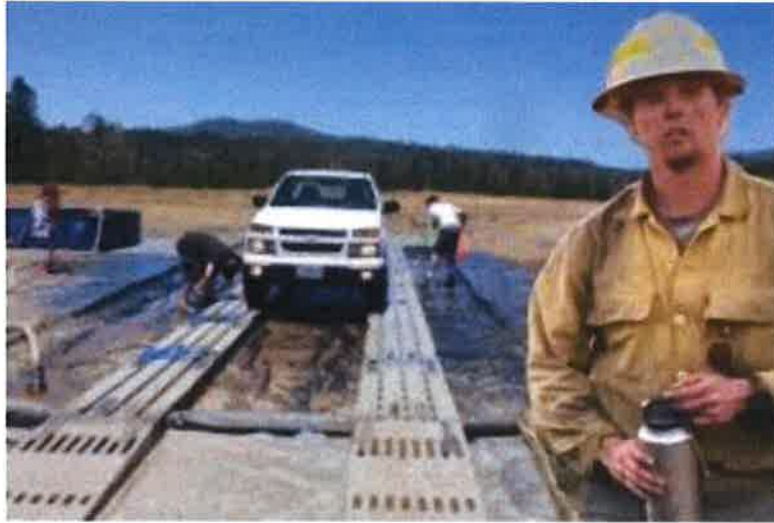
COMMUNICATIONS UNIT 24 hr phone:

208-891-8019

CONTROLLED UNCLASSIFIED INFORMATION//BASIC (CUI)

WEED WASH

INCOMING AND OUTGOING RESOURCES



In 1939, Montana passed the “Weed Control” law, which included regulations on weed seed.

A primary example of a new technology was the automobile. In 1931, the geographer Isaiah Bowman observed that “the dry western grass country” of Montana was “built on gasoline.” Bowman did not associate the “gasoline culture” of the Great Plains with the spread of weeds, but they were connected. Cars, trucks, tractors, and farm equipment provided an outstanding vehicle for weed seeds, and the machines came with an expanding network of roads that served as corridors and jumping-off places for the weed advance into the Big Sky state. Beginning in the Second World War, for example, the owners of custom combining outfits—trucks, trailers, and combines—drove north from Oklahoma, following the seasonal northerly advance of the wheat harvest. Moving from field to field, the vehicles picked up so many weed seeds that by the time they reached the heart of Montana’s grain districts they were veritable rolling collections of weed life. In the fall of 1958, the Chouteau County extension agent counted eleven kinds of weed seeds on a single combine.²⁴

One plant that spread with alarming vigor in conjunction with automobiles was spotted knapweed, a hardy Eurasian species with a tough, sinewy stalk and purple or pink blossoms that looked like cornflowers. Discovered in Ravalli County in the early twentieth century—exactly when is unclear—it was prolific and aggressive: each plant produced thousands of seeds, and each plant emitted toxins that inhibited the growth of surrounding vegetation. Human actions assisted these natural advantages. Hay, crop seeds (knapweed evidently arriving in a batch of alfalfa seed), and irrigation water carried the plant’s offspring. Logging, farming, grazing, railroads, and construction disturbed soil and opened space in which those seeds could grow. But more than anything else, automobiles and roads transformed knapweed into one of the most notorious Montana plants. On weedy prairies, fields, and roads, cars and trucks snagged seeds; wind, water, vegetation, or vibration later dislodged the tiny grains. By the late twentieth century, Montana contained nearly 12,000 miles of highways and some 66,000 miles of smaller roads, “a web of corridors” along which knapweed and other unwanted vegetation moved. By such means did knapweed expand to some 4.5 million Montana acres by the 1990s. In Missoula and Ravalli counties it grew so thickly and over such a large area that concerned citizens thought it an environmental disaster.²⁵



HUMAN RESOURCE MESSAGE

There is zero tolerance for harassment, political activities, alcohol, or federally prohibited substances on this fire incident.



People may hear your words, but they feel your attitude.

John C. Maxwell

It is your choice how you project yourself today.

Choose to be positive; it can change your day!

Debby Hassel, HRSP (979) 255-5513

herspfire@gmail.com

\$\$\$ GROUSE FINANCE PROCEDURES \$\$\$

Finance email: 2024.grouse.finance@firenet.gov

Finance Phone Numbers

Time (Personnel and Equipment): 208-914-1873

Comp/Claims: 208-891-6348

Finance check-in: Please email electronic copies of the following documents as applicable:

- Contract/Agreement/State Cooperative Agreement
- Casual Hire Form
- Resource Order
- Crew Manifest
- Travel CTRs and Shift Tickets

Submitting Time: Please email completed CTRs and/or Shift Tickets signed by immediate supervisor **every 2 days, after submitting travel time**. Include Resource Order Number in the subject line.

- Electronic CTRs and Shift Tickets are available through the QR code on the IAP cover.
- A **legible photo** is acceptable.

**** All time must include required justifications for hazard pay, compensable meal breaks, or excess hours. Don't forget name, RO# and date. **Include a valid phone # and email.****

Finance demob: Please **Email or call** Finance to notify them that you are demobing.

- Provide email and phone number on **final** CTR and/or Shift Ticket.
- Email electronic copies of your final CTRs and Shift Tickets, including travel time. Include in the email they are final documents for the incident.
- Finance will email final time documents (including OF-288/286) electronically for review and signatures.

Medical

Please work directly with the **Medical Unit Leader**. The MEDL will work with Finance to ensure forms are available and completed.

Damages or Claims

Do not wait until day of demob. An electronic OF-289, *Property Loss or Damage Report*, is available through the QR Code on the IAP cover. Contact Comp/Claims (or FSC) with questions. Include witness statements, signatures and **your contact info**.

DEMOB TIPS

Airline Flights

Contact DEMOB early to arrange your flight home. It can take up to 72 hours to process.

Weedwash

All vehicles that leave paved roads must go through weedwash located at the junction of highways 43 and 73 at the H-J.

Crew Swaps & Extensions

All crew swaps and extension requests must be initiated through your fire supervisor at least 72 hours prior to your scheduled demobilization and submitted through your respective section chief.

Demob Steps

1. Return all supplies, radios, etc. that were checked out.
2. Submit time for all personnel and equipment to finance.
3. All vehicles that have been to the fireline must go through a car/weed wash.
4. Receive a copy of your OF-288 and/or other financial documentation from Finance.
5. Complete the Demob Checkout Sheet using the QR Code located on the IAP
6. Once you submit the Demob Checkout Sheet you are released and may travel home.

Contact Demob

If you have demob, airline, flight, extensions, or crew swap questions you can contact demob at 605.381.2521 or 2024.grouse.demob@firenet.gov

Safe Travels!

DEMOB LIST

DEMOB 8/13/2024

Request #	Item Code	Resource Name
A-34.1	HMGB	SILVA, JERRID
C-9	CRW2	LAVA RIVE FORESTRY INC.
C-10	CRW1	FLATHEAD IHC
E-25.1	DRIV	CUNNINGHAM, CHUCK
E-30.1	DRIV	HARTZ, BRIAN
E-33	ENG6	C & G COUGAR FIRE CO, LLC
E-35	ENG6	CASTLE MOUNTAIN FIRE
E-42	SKG1	RT LOGGING LLC
E-57	ENG6	CAHOON CONTRACTING LLC
E-61	FEL1	DS JR TRUCKING INC
E-62	FEL1	DS JR TRUCKING INC
O-56	FMOD	MILLER CREEK REFORESTATION INC
O-114	ORDM	YOUNGSTROM, ELIZABETH ANN
O-142.36	RESL	LANCASTER, RICHARD
O-154	THSP	WALKER, RUSSELL JEFFREY

DEMOB 8/14/2024

Request #	Item Code	Resource Name
A-20.4	UASP	SNIPES, ERIC STEVEN
A-20.5	UASP	SMITH, MATTHEW G
E-2	ENG6	BRIAN CAHOON - D00612
E-36	ENG6	BAKKEN ROBERT
E-61	FEL1	DS JR TRUCKING INC
O-72	TFLD	QUIROGA, FERNANDO A
O-81	FACL	KIMPLING, PAUL MYCHAL
O-132	TFLD	LUCIER, TYSON D
O-142.10	DIVS	TJADEN, JOSEPH CARL
O-142.41	LSCC	SPIERING, RANDY J
O-142.67	AOBD	LINGENFELTER, MATT
O-152	TFLD	GORWITZ, BRIAN

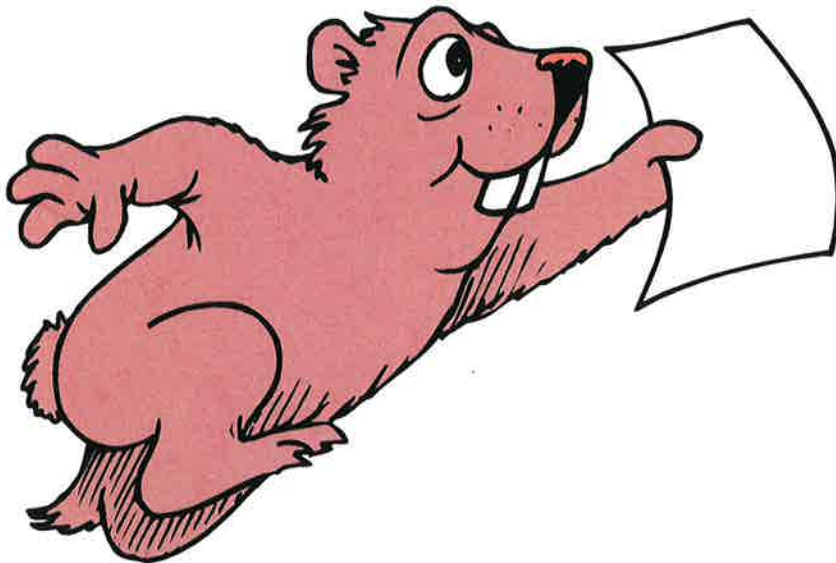
DEMOB 8/15/2024

Request #	Item Code	Resource Name
A-20.7	UASD	FILKINS, JOSEPH E
C-6	CRWC	ANACONDA - CREW #2 - MOB # 1
C-7	CRW2	WEST COAST REFORESTATION INC
C-9	CRW2	LAVA RIVER FORESTRY INC.
E-62	FEL1	DS JR TRUCKING INC
E-82	SKD1	DS JR TRUCKING INC
E-83	SKD1	DS JR TRUCKING INC
O-25	SEC2	DAVIS, BRADLEY DODGE
O-132	TFLD	LUCIER, TYSON D
O-142.40	SECM	HANSON, DARRELL WYMAN

Training Specialist Message

Trainers and Trainees
Avoid the Rush!!!

Come by and Complete Your
Paperwork
Today!!!

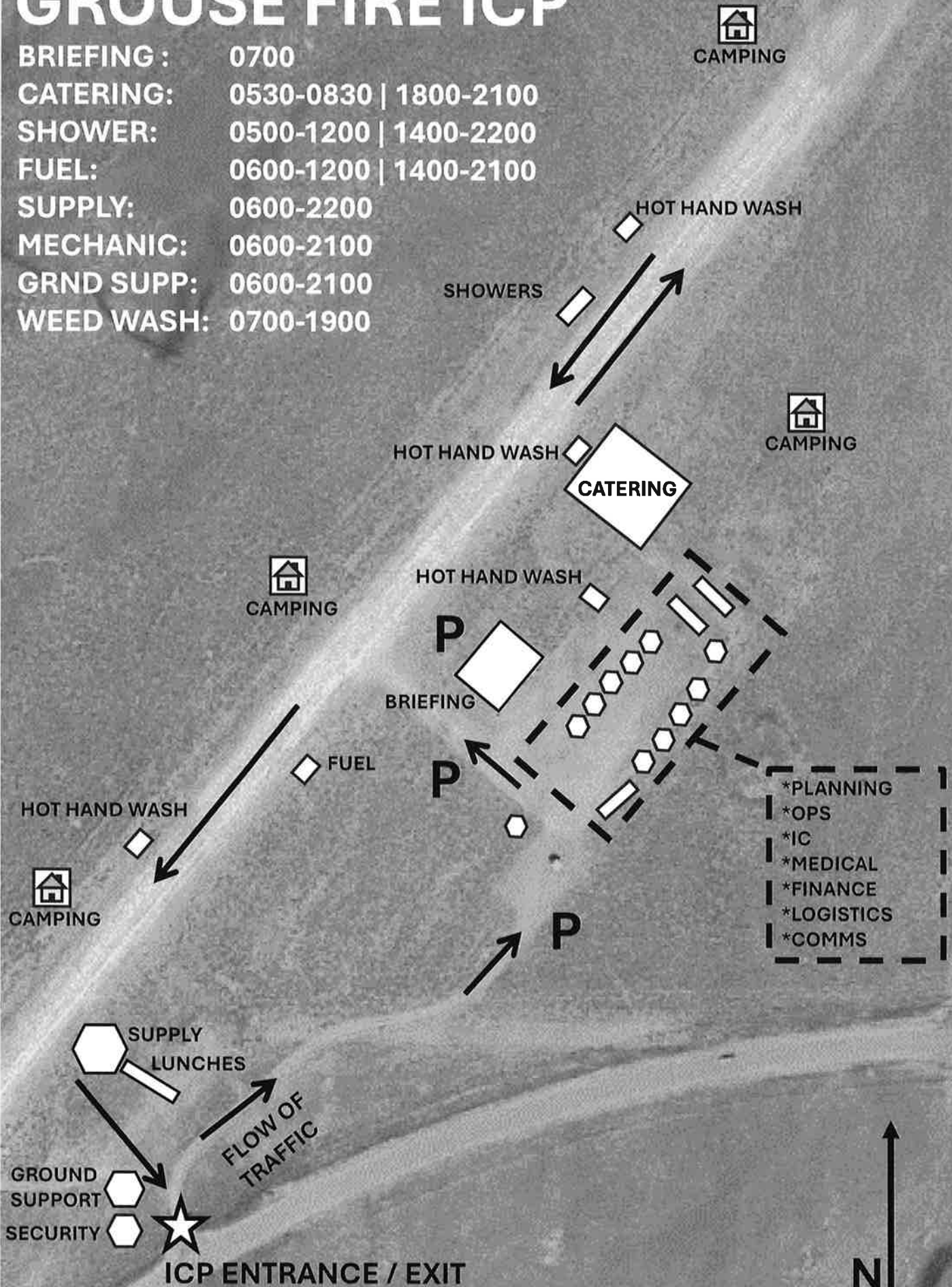


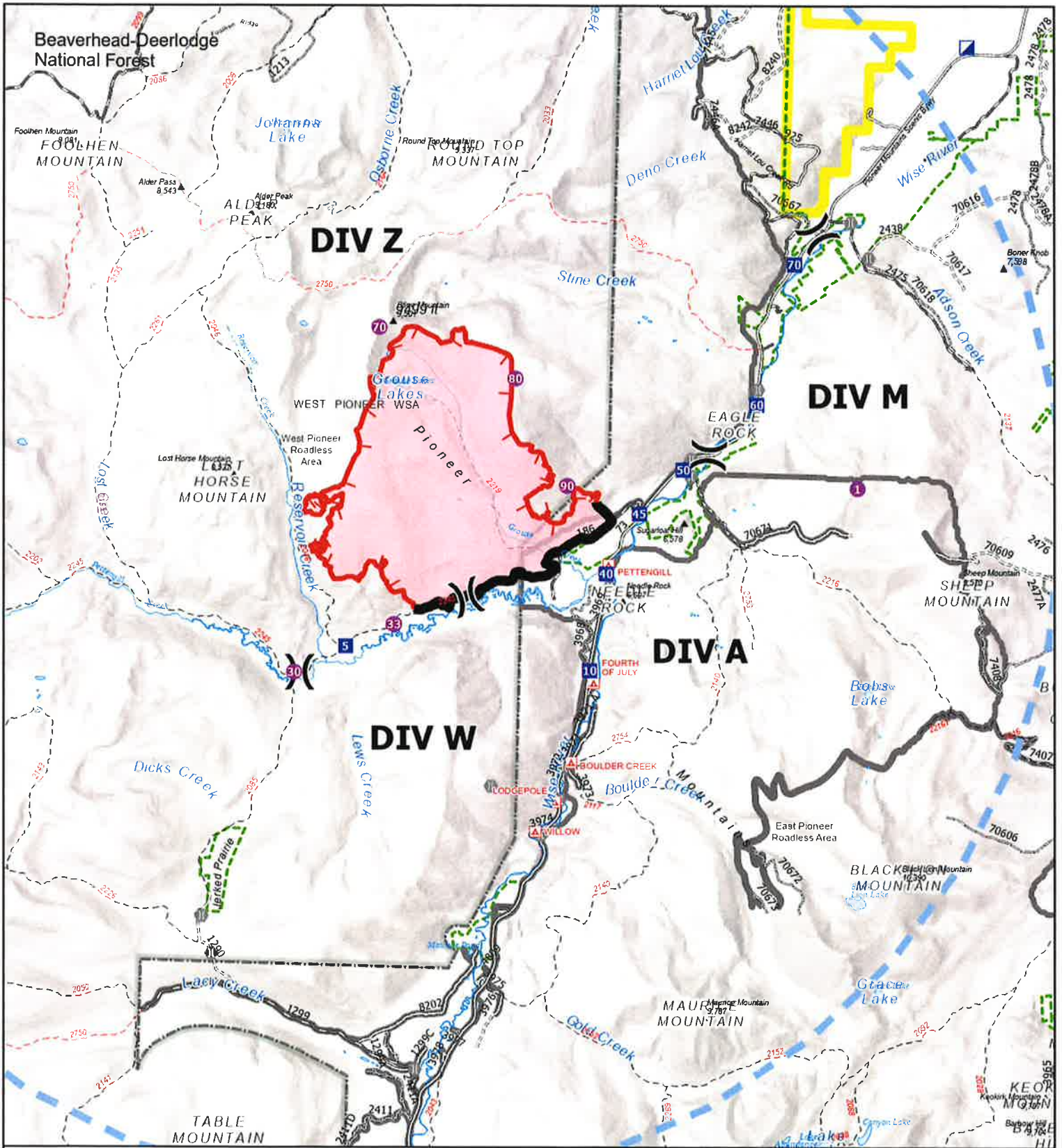
Wendy Fischer
Training Specialist
970-759-9610
wendy_fischer@firenet.gov

Carolyn Blatz
Training Specialist (T)
573-778-2810
carolyn_blatz@firenet.gov

GROUSE FIRE ICP

BRIEFING : 0700
CATERING: 0530-0830 | 1800-2100
SHOWER: 0500-1200 | 1400-2200
FUEL: 0600-1200 | 1400-2100
SUPPLY: 0600-2200
MECHANIC: 0600-2100
GRND SUPP: 0600-2100
WEED WASH: 0700-1900





IAP

Grouse
 MT-BDF-246327
 08/13/2024 Day

4,157 acres at 08/10/2024 @ 0145 MDT

0 0.250.5 1 1.5 2

Miles

1:100,000 (RM CIMT 3) 8/12/2024 1:105

Acres from 19

North American 1983 Datum



- | | | | |
|--|-------------------------------|--|-----------------------------------|
| | Wildfire Daily Fire Perimeter | | Drop Point |
| | Contained | | Trail |
| | Uncontained | | National Designated Trail |
| | Temporary Flight Restriction | | USFS Roadless Areas |
| | Hellspot | | FS Wilderness Study Area Boundary |
| | Division Break | | Forest Service Land |
| | Incident Command Post | | Bureau of Land Management Lands |



Current Maps

First source of supply is Cache, shaded blocks indicate items available thru Northern Rockies Cache.											Items requiring an approved Property Loss and Damage form are in a separate list at the bottom.										
PART	034/341	360/MS360	MS361	MS362	038/381	044/MS440	MS441	460/MS461	MS462	0640/650	MS660	MS880									
Spark Plug (NFES# 000344)	Bosch WSR6F NGK BPMR7A Champion RCJ6Y	Bosch WSR6F NGK BPMR7A Champion RCJ6Y	Bosch WSR6F NGK BPMR7A Champion RCJ6Y	Bosch WSR6F NGK BPMR7A Champion RCJ6Y	Bosch WSR6F NGK BPMR7A Champion RCJ6Y	Bosch WSR6F NGK BPMR7A Champion RCJ6Y	Bosch WSR6F NGK BPMR7A Champion RCJ6Y	Bosch WSR6F NGK BPMR7A Champion RCJ6Y	Bosch WSR6F NGK BPMR7A Champion RCJ6Y	Bosch WSR6F NGK BPMR7A Champion RCJ6Y	Bosch WSR6F NGK BPMR7A Champion RCJ6Y	Bosch WSR6F NGK BPMR7A Champion RCJ6Y									
Needle Cage Bearing (NFES# 066565)	9512-933-2380	9512-933-2380	9512-933-2380	9512-933-2380	9512-933-2380	9512-933-2380	9512-933-2380	9512-933-2380	9512-933-2380	9512-933-2382	9512-933-2382	9512-933-3170									
Retaining Washer for Rim Sprocket	0000-958-1022	0000-958-1022	0000-958-1032	0000-958-1032	0000-958-1231	0000-958-1032	0000-958-1032	0000-958-1032	0000-958-1032	0000-958-1032	0000-958-1032	0000-958-1236									
E Clip (NFES# 066517)	9460-624-0801	9460-624-0801	9460-624-0801	9460-624-1001	9460-624-1001	9460-624-0801	9460-624-0801	9460-624-0801	9460-624-0801	9460-624-0801	9460-624-0801	9460-624-1001									
Fuel Filter	0000-350-3504	0000-350-3504	0000-350-3504	0000-350-3504	0000-350-3504	0000-350-3504	0000-350-3504	0000-350-3504	0000-350-3518	0000-350-3504	0000-350-3500	0000-350-3504									
Air Filter - HD (NFES# 066756)	1125-120-1626	1125-120-1612	1135-120-1600	1140-140-4401	1119-120-1611	0000-140-4402	0000-120-1654	0000-120-1654	1142-140-4402	0000-140-4402	0000-140-4402	0000-140-4402									
Pre Filter - OEM	N/A	N/A	N/A	N/A	1119-120-1500	0000-141-0300	0000-141-0300	0000-141-0300	N/A	0000-141-0300	0000-141-0300	0000-141-0300									
Bar Nut (NFES# 06661)	0000-955-0801	0000-955-0801	0000-955-0801	0000-955-0801	0000-955-0801	0000-955-0801	0000-955-0801	0000-955-0801	0000-955-0803	0000-955-0801	0000-955-0801	0000-955-0903									
Inner Slide Plate	1122-664-1000	1122-664-1000	1122-664-1000	1122-664-1000	1119-664-1000	1128-664-1001	1138-664-1000	1128-664-1001	1128-664-1001	1128-664-1001	1128-664-1001	1124-664-1001									
STIHL RAPID - Super (RS)																					
Chain 3/8"Pitch - .050" GA - DR																					
20" - 72 DR	3623-005-0072	3623-005-0072	3623-005-0072	3623-005-0072	3623-005-0072	3623-005-0072	3623-005-0072	3623-005-0072	3623-005-0072	3623-005-0072	3623-005-0072	3623-005-0072									
25" - 84 DR (NFES# 006500)	3623-005-0084	3623-005-0084	3623-005-0084	3623-005-0084	3623-005-0084	3623-005-0084	3623-005-0084	3623-005-0084	3623-005-0084	3623-005-0084	3623-005-0084	3623-005-0084									
28" - 91 DR	3623-005-0091	3623-005-0091	3623-005-0091	3623-005-0091	3623-005-0091	3623-005-0091	3623-005-0091	3623-005-0091	3623-005-0091	3623-005-0091	3623-005-0091	3623-005-0091									
32" - 105 DR	N/A	N/A	N/A	N/A	N/A	3623-005-0105	3623-005-0105	3623-005-0105	3623-005-0105	3623-005-0105	3623-005-0105	3623-005-0105									
STIHL RAPID - Super - Full Skip (RSF)																					
Chain 3/8"Pitch - .050" GA - DR																					
20" - 72 DR	N/A	3676-005-0072	3676-005-0072	3676-005-0072	3676-005-0072	3676-005-0072	3676-005-0072	3676-005-0072	3676-005-0072	3676-005-0072	3676-005-0072	3676-005-0072									
25" - 84 DR	3676-005-0084	3676-005-0084	3676-005-0084	3676-005-0084	3676-005-0084	3676-005-0084	3676-005-0084	3676-005-0084	3676-005-0084	3676-005-0084	3676-005-0084	3676-005-0084									
28" - 91 DR	3676-005-0091	3676-005-0091	3676-005-0091	3676-005-0091	3676-005-0091	3676-005-0091	3676-005-0091	3676-005-0091	3676-005-0091	3676-005-0091	3676-005-0091	3676-005-0091									
32" - 105 DR	N/A	N/A	N/A	N/A	N/A	3676-005-0105	3676-005-0105	3676-005-0105	3676-005-0105	3676-005-0105	3676-005-0105	3676-005-0105									
Bar oil: Quantity - Gallon	NFES # 1880																				
Bar oil: Quantity - Quart	NFES # 1869																				
2 Cycle Oil: Quantity - Quart	NFES # 0341																				

The following parts require an approved Property Loss & Damage form prior to ordering:

Guide Bars - 3/8" - .050" GA (STIHL)												
ROLLMATIC - ES												
20"	3003-000-8822	3003-000-8822	3003-000-8822	3003-000-8822	3003-000-8822	3003-000-8822	3003-000-8822	3003-000-8822	3003-000-8822	3003-000-8822	3003-000-8822	3003-000-8822
25" (NFES# 066584)	N/A	3003-000-8830	3003-000-8830	3003-000-8830	3003-000-8830	3003-000-8830	3003-000-8830	3003-000-8830	3003-000-8830	3003-000-8830	3003-000-8830	3003-000-8830
28"	N/A	N/A	N/A	N/A	N/A	3003-000-8838	3003-000-8838	3003-000-8838	3003-000-8838	3003-000-8838	3003-000-8838	3003-000-8838
32"	N/A	N/A	N/A	N/A	N/A	3003-000-8846	3003-000-8846	3003-000-8846	3003-000-8846	3003-000-8846	3003-000-8846	3003-000-8846
Rim Sprocket Kit 3/8 - 7T	1125-007-1040	1125-007-1223	1128-007-1000	1119-007-1003	1119-007-1003	1128-007-1000	1128-007-1000	1128-007-1017	1128-007-1000	1122-007-1000	1122-007-1000	N/A
Clutch Drum	Order Sprocket Kit	Order Sprocket Kit	Order Sprocket Kit	Order Sprocket Kit	Order Sprocket Kit	Order Sprocket Kit	Order Sprocket Kit	Order Sprocket Kit	Order Sprocket Kit	Order Sprocket Kit	Order Sprocket Kit	Order Sprocket Kit
Rim Sprocket 3/8 7T (NFES# 066652)	0000-642-1231	0000-642-1223	0000-642-1223	0000-642-1223	0000-642-1223	0000-642-1223	0000-642-1223	0000-642-1223	0000-642-1223	0000-642-1223	0000-642-1223	N/A
Rim sprocket kit 3/8 - 8T	N/A	N/A	N/A	N/A	N/A	1128-007-1001	1128-007-1001	1128-007-1001	1128-007-1001	1122-007-1001	1122-007-1001	1124-007-1025
Clutch Drum	Order Sprocket Kit	Order Sprocket Kit	Order Sprocket Kit	Order Sprocket Kit	Order Sprocket Kit	Order Sprocket Kit	Order Sprocket Kit	Order Sprocket Kit	Order Sprocket Kit	Order Sprocket Kit	Order Sprocket Kit	Order Sprocket Kit
Rim Sprocket 3/8 - 8T	N/A	0000-642-1216	0000-642-1216	0000-642-1216	0000-642-1216	0000-642-1216	0000-642-1216	0000-642-1216	0000-642-1216	0000-642-1216	0000-642-1216	0000-642-1216
Clutch	1127-160-2050	1125-160-2005	1128-160-2004	1119-160-2000	1119-160-2000	1128-160-2001	1128-160-2010	1128-160-2004	1142-160-2000	1122-160-2005	1122-160-2002	1124-160-2005
Chain Adjuster Kit	1125-007-1036	1125-007-1021	1125-007-1021	1118-664-1600	1118-664-1600	1125-007-1021	1125-007-1021	1125-007-1021	1125-007-1021	1125-007-1021	1125-007-1021	1124-007-1008
Bump Strip	1121-648-6610	1121-648-6610	1121-648-6610	1121-648-6610	1121-648-6610	1121-648-6610	1121-648-6610	1121-648-6610	1121-648-6610	1121-648-6610	1121-648-6610	1121-648-6610
Starter Rope W/handle	1128-190-3400	1128-190-3400	1128-190-3400	1128-190-3400	1128-190-3400	1128-190-3400	1128-190-3400	1128-190-3400	1128-190-3400	1128-190-3400	1128-190-3400	1128-190-3400
Worm Gear (Oiler)	1125-640-7110	1125-640-7110	1128-640-7112	1119-642-1501	1119-642-1501	1128-640-7112	1128-640-7112	1128-640-7112	1128-640-7112	1122-640-7105	1122-640-7105	1124-640-7512
Manifold Boot	1125-141-2200	1125-141-2200	1135-141-2200	1119-140-2500	1119-140-2500	1128-141-2204	1138-140-2508	1128-141-2204	1142-141-2200	1122-141-2200	1122-141-2201	1124-141-2202



Medical Plan (206 WF)

ROCKY MOUNTAIN INCIDENT MANAGEMENT

1. Incident / Project Name		2. Operational Period				
Grouse Fire		Date/Time: 8/13/2024 0600-2000				
3. Ambulance Services						
Name	Address	Phone and Emergency Frequency		Advanced Life Support (ALS) YES NO		
A1 Ambulance	Butte, MT	406-490-3130		X (most of the time)		
Anaconda Fire (can rendezvous at HWY 569/HWY 43)	Anaconda, MT	406-463-2164		X		
4. Air Ambulance Services						
Name	Phone	Type of Aircraft & Capability				
Lifelight	800-232-0911 Order through Grouse Communications	ALS with critical care Night Vision (will fly at night)				
Air Idaho Rescue (Air Methods) Air 4	877-818-5553 Order through Grouse Communications	ALS with critical care Night Vision (will fly at night)				
4MA Forest IA	Order through Grouse Communications	Bell 407 HP Litter Capable (will NOT fly at night)				
2HX Grouse Fire	Order through Grouse Communications	Bell 429 Hoist Capable (will NOT fly at night)				
***** TRAVEL TIME FROM ICP*****						
Name Complete Address	LAT: DD° MM.MMM'N LONG: DD° MM.MMM'W	Travel Time From ICP Air Ground		Phone	Helipad Yes /No	Level of Care
St Vincent Regional 1233 N 30th St Billings, MT	Lat: 45° 47.658' N Long: 108° 31.003' W	1 hr	4 hrs	406-657-7000	YES	Level 1 Trauma Cardiac & Cath Lab Stroke Center
St Patrick Hospital 500 W Broadway St Missoula, MT	Lat: 46° 52.533' N Long: 114° 0.001' W	45 min	2.25 hrs	406-543-7271	YES	Level 2 Trauma Cardiac & Cath Lab Stroke Center
St James Healthcare 400 S Clark St Butte, MT	Lat: 46° 0.512' N Long: 112° 32.742' W	35 min	45 min	406-723-2585	YES	Level 3 Trauma Cardiac Certified Stroke Certified
Barrett Hospital 600 HWY 91 S Dillon, MT 59725	Lat: 45° 12.097' N Long: 112° 38.839' W	40 min	1 hr	406-683-3000	YES	Level 4
Community Hosp of Anaconda 401 W PennsylvaniaST Anaconda, MT	Lat: 46° 7.950' N Long: 112° 57.427' W	35 min	50 min	406-563-8500	YES	Local Emergency Room Only
*Travel times are from Grouse Fire ICP to the facility and DO NOT include response time to the incident.						
6. Division Branch Group						
ALPHA	EMS Responders & Capabilities:	E-3 AMBO 1 - Andrew Ellis O-170 REMS 5 - Ben Lewis O-166 MEDIC 6 - Trenton Harper				
	Equipment Available on Scene:	4x4, UTV, ALS Kit, Rope Rescue, ALS Ambulance, Oxygen				
	Medical Emergency Channel:	COMMAND A/G: VMED 28				
MIKE	EMS Responders & Capabilities:	O-59 MEDIC 3 - John Baker				
	Equipment Available on Scene:	4x4, ALS Kit				
	Medical Emergency Channel:	COMMAND A/G: VMED 28				
WHISKEY	EMS Responders & Capabilities:	O-58 MEDIC 4 - Bocca Wallace (Spiked with Kaniksu Mod)				
	Equipment Available on Scene:	4x4, ALS Kit				
	Medical Emergency Channel:	COMMAND A/G: VMED 28				
ZULU	EMS Responders & Capabilities:	UNSTAFFED				
	Equipment Available on Scene:					
	Medical Emergency Channel:	COMMAND A/G: VMED 28				
STRUCTURE	EMS Responders & Capabilities:	NO MEDICAL RESOURCES ASSIGNED				
	Equipment Available on Scene:					
	Medical Emergency Channel:	COMMAND A/G: VMED 28				
8. Prepared by: (Medical Unit Leader)		Date	Reviewed by: (Safety Officer)		Date	
/s/ Dan Leone MEDL		8/12/2024	/s/ Dave Day SOFC (t)		8/12/2024	

MEDICAL PLAN (ICS 206 WF)

Controlled Unclassified Information//Basic

Medical Incident Report

FOR A NON-EMERGENCY INCIDENT, WORK THROUGH CHAIN OF COMMAND TO REPORT AND TRANSPORT INJURED PERSONNEL AS NECESSARY.

FOR A MEDICAL EMERGENCY: IDENTIFY ON SCENE INCIDENT COMMANDER BY NAME AND POSITION AND ANNOUNCE "MEDICAL EMERGENCY" TO INITIATE RESPONSE FROM IMT COMMUNICATIONS/DISPATCH.

Use the following items to communicate situation to communications/dispatch.

1. CONTACT COMMUNICATIONS / DISPATCH (Verify correct frequency prior to starting report)

Ex: "Communications, Div. Alpha. Stand-by for Emergency Traffic."

2. INCIDENT STATUS: Provide incident summary (including number of patients) and command structure.

Ex: "Communications, I have a Red priority patient, unconscious, struck by a falling tree. Requesting air ambulance to Forest Road 1 at (Lat./Long.) This will be the Trout Meadow Medical, IC is TFLD Jones. EMT Smith is providing medical care."

Severity of Emergency / Transport Priority	<input type="checkbox"/> RED / PRIORITY 1 Life or limb threatening injury or illness. Evacuation need is IMMEDIATE <i>Ex: Unconscious, difficulty breathing, bleeding severely, 2° – 3° burns more than 4 palm sizes, heat stroke, disoriented.</i> <input type="checkbox"/> YELLOW / PRIORITY 2 Serious Injury or illness. Evacuation may be DELAYED if necessary. <i>Ex: Significant trauma, unable to walk, 2° – 3° burns not more than 1-3 palm sizes.</i> <input type="checkbox"/> GREEN / PRIORITY 3 Minor Injury or illness. Non-Emergency transport <i>Ex: Sprains, strains, minor heat-related illness.</i>	
Nature of Injury or Illness & Mechanism of Injury		<i>Brief Summary of Injury or Illness (Ex: Unconscious, Struck by Falling Tree)</i>
Transport Request		<i>Air Ambulance / Short Haul/Hoist Ground Ambulance / Other</i>
Patient Location		<i>Descriptive Location & Lat. / Long. (WGS84)</i>
Incident Name		<i>Geographic Name + "Medical" (Ex: Trout Meadow Medical)</i>
On-Scene Incident Commander		<i>Name of on-scene IC of Incident within an Incident (Ex: TFLD Jones)</i>
Patient Care		<i>Name of Care Provider (Ex: EMT Smith)</i>

3. INITIAL PATIENT ASSESSMENT: Complete this section for each patient as applicable (start with the most severe patient)

Patient Assessment: See IRPG page 106

Treatment:

4. TRANSPORT PLAN:

Evacuation Location (if different): (Descriptive Location (drop point, intersection, etc.) or Lat. / Long.) Patient's ETA to Evacuation Location:

Helispot / Extraction Site Size and Hazards:

5. ADDITIONAL RESOURCES / EQUIPMENT NEEDS:

Example: Paramedic/EMT, Crews, Immobilization Devices, AED, Oxygen, Trauma Bag, IV/Fluid(s), Splints, Rope rescue, Wheeled litter, HAZMAT, Extrication

6. COMMUNICATIONS: Identify State Air/Ground EMS Frequencies and Hospital Contacts as applicable

Function	Channel Name/Number	Receive (RX)	Tone/NAC *	Transmit (TX)	Tone/NAC *
COMMAND					
AIR-TO-GRND					
TACTICAL					

7. CONTINGENCY: Considerations: If primary options fail, what actions can be implemented in conjunction with primary evacuation method? Be thinking ahead.

8. ADDITIONAL INFORMATION: Updates/Changes, etc.

REMEMBER: Confirm ETA's of resources ordered. Act according to your level of training. Be Alert. Keep Calm. Think Clearly. Act Decisively.