



Incident Action Plan

Grouse Fire

MT-BDF-246327, P1R4SM24 (0102)

Wednesday, August 14, 2024

0600-2000

Safety Starts Here

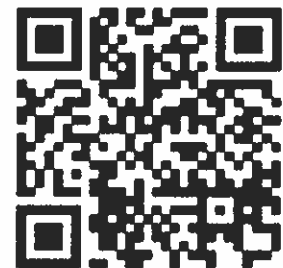
Checklists and Checks

As our current fire winds down, this is a great opportunity to check our safety, medical and preventative equipment. Take advantage of any down time you might have to get your equipment ready for the next fire. If you have equipment that is not part of a routine checklist, add it on.

A few items that should be checked for functionality and expiration include:

- AED batteries
- Fire extinguishers
- Spare tires
- First aid kits
- Oxygen cylinders
- Crash rescue kits
- Other medical equipment

Incident Commanders
Bill Waln, Phil Daniels
Jay Mickey (T)



Available at this site: Remote Incident Check-in, IAP's, Maps, Finance, Fillable-CTR's, Training, Demob, Shift Tickets and General Messages

| | | | |
|---|--|--|--------------------------------------|
| INCIDENT OBJECTIVES | 1. Incident Name GROUSE FIRE | 2. Date Prepared August 13, 2024 | 3. Time 1400 |
| 4. Operational Period: August 14, 2024 Day Operations 0600-2000 | | | |
| <p>Leaders Intent: It is the Incident Commander's expectation that we as an organization will meet the following leader's intent, as well as the incident objectives identified below:</p> <ul style="list-style-type: none"> • Ensure all incident strategies and actions reflect a commitment to public, responder, and aviation safety through use of an adaptive risk management process as outlined in the IRPG and the aviation risk assessment process. • Treat all incident personnel, cooperators, and local public with dignity and respect, and create a "no tolerance" atmosphere for harassment, alcohol, or illegal drug use. • Respect the integrity of the cultural resources in and adjacent to the incident, coordinating all operational activities with the Forest Archaeologist. <p>Incident Objectives:</p> <ul style="list-style-type: none"> • Continually provide for emergency personnel and public safety through the utilization of a deliberate, risk- informed approach, with avenues for feedback from personnel. • Use a full suppression strategy with a combination of direct, indirect, and point zone protection tactics where reasonable to protect the identified critical values of risk. • Develop contingency plans to identify management actions to be taken if the fire threatens Pioneer Scenic Byway, Jerked Prairie, and/or Highway 43. • Foster and maintain relationships with the public, cooperators, and vested parties. • Ensure coordinated, timely, and accurate release of information to the public and land managers, including the BLM and the Montana DNRC, utilizing the full suite of platforms. • Maintain fiscal accountability by making good risk-informed decisions. • Provide for a smooth transition and adjust organizational resources to meet current and forecasted tactical operations. | | | |
| 8. Attachments (X if attached) | | | |
| <input checked="" type="checkbox"/> | Cover / Safety Message | <input checked="" type="checkbox"/> | ICS 203 Organization Assignment List |
| | Fire Behavior Forecast | <input checked="" type="checkbox"/> | ICS 204 Division Assignment Lists |
| <input checked="" type="checkbox"/> | ICS 205 Incident Radio Comm Plan | | |
| <input checked="" type="checkbox"/> | Human Resource Message | <input checked="" type="checkbox"/> | Finance Message |
| <input checked="" type="checkbox"/> | Demob List | <input checked="" type="checkbox"/> | Training Message |
| <input checked="" type="checkbox"/> | NR Chainsaw Parts Order Form | <input checked="" type="checkbox"/> | ICS 206 Medical Plan |
| | | <input checked="" type="checkbox"/> | Fire Weather Forecast |
| | | <input checked="" type="checkbox"/> | ICS 220 Air Operations Summary |
| | | <input checked="" type="checkbox"/> | Resource Advisor Message |
| | | <input checked="" type="checkbox"/> | Demob Tips |
| | | <input checked="" type="checkbox"/> | Incident Map |
| | | <input checked="" type="checkbox"/> | Medical Incident Report – 8 Line |
| 9. Prepared by PSCC PETER BARTH <i>Peter Barth</i> | | 9. Approved by (Incident Commander) WALN / DANIELS / MICKEY (T) <i>[Signature]</i> | |

ORGANIZATION ASSIGNMENT LIST

| Incident Name | | Operations Section | |
|----------------------------------|--------------------------------------|-------------------------------|---|
| Grouse Fire | | Field | Brandon "Bones" Bonenberger |
| | | Planning | Troy Mueller, Joe Duran (T) |
| Date Prepared | Time Prepared | Strategic | Rodney Redinger |
| 8/13/2024 | 1900 | Division/Group | |
| Operational Period | | | |
| 8/14/2024 0600 to 8/14/2024 2000 | | | |
| Incident Commander and Staff | | Alpha | DIVS Blake Stewart, Bela Harrington (T) |
| Incident Commander | Bill Wain, Jay Mickey (T) | Mike | DIVS Chris Rokosh, Zach Valentiner (T) |
| Deputy | Phil Daniels | Whiskey | DIVS Geoff Harrison, Alex Doud (T) |
| Safety Officer | Brandon Hoffman, David Day (T) | Zulu | DIVS Unstaffed |
| Medical Unit | Dan Leone, Kristina Bastian (T) | Structure | Group Mike Gustafson (TFLD) |
| Liaison Officer | Tim Flanary, Laurie Abel | | |
| Information Officer | Cass Cairns | | |
| Human Resource Specialist | Debby Hassel (v) | | |
| Agency Representatives | | Air Operations Branch | |
| BDNF | Tim Lahey, Sara Rouse (T) | Air Operation Branch Director | Matt Lingenfelter |
| BLM | Lindsey Babcock, Brandy Janzen (T) | Air Support Group Supervisor | Randy Gilbert (T) |
| MT-DNRC | Tim Egan | Air Tactical Group Supervisor | |
| Resource Advisor | Ayme Swartz | Helibase Manager | Matt Esser (T) |
| | | | |
| | | | |
| | | Finance Section | |
| | | Chief | Kayla Davin |
| | | Time Unit | Natasha Goedert (T) |
| | | Cost/Comp Unit | Annette Pintado (v) |
| | | Comp/Claims | Arlene Tucker (T) |
| Planning Section | | | |
| Chief | Peter Barth | | |
| Resource Unit | Kellie Stover | | |
| Situation Unit | Jodi Wetzstein | | |
| Training Specialist | Wendy Fischer (v), Carolyn Blatz (T) | Logistics Section | |
| Meteorologist | Mark Loeffelbein | Chief | Darin Gehring, Jamie Rietz (T) |
| Demobilization Unit | Logan Brown | Facilities Unit | Ish Ennis, Ken Hehr |
| Documentation Unit | Spencer Pollock (RIST) | Ground Support Unit | Lee Walker |
| IT Specialist | Eric Simmons, Tyler Ward (T) | Communications Unit | Walter Warrick |
| Long Term Analyst | Erin Noonan (v) | Supply Unit | Robin Brooks |
| | | Food Unit | Wally Leander |
| | | Security | Dave Tyndell |
| | | Ordering | Monty Bollock (T) |
| | | | |

Kellie Stover – RESL

Kellie Stover



Grouse Weather Forecast

FORECAST NO: 5
FORECAST FOR: Wed, Aug 14, 2024 Day
FORECAST ISSUED: Aug 13, 2024, 1800 MDT

NAME OF FIRE: Grouse
UNIT: Beaverhead-Deerlodge NF
SIGNED: //s// Mark Loeffelbein - IMET

WEATHER DISCUSSION: ...A small break in between weather systems will allow things to dry out with only a small chance of thunderstorm development in the afternoon. Winds will turn to the west in the late morning and to the northwest in the afternoon. While the actual wind speed won't be too strong it will be a change in the wind direction and cause winds in the Wise River Drainage to turn from down drainage in the morning to up drainage after 1400. Thunderstorm chances will increase again on Thursday and Friday.

FORECAST FOR TODAY: Partly Cloudy (30-50%). 20% Chance of Thunderstorms after 1200.

Max Temperature(°F):

(6500 ft.) 68-74 (Little Change) **Min RH: (6500 ft.)** 27-32% (6-9% Lower)
(8500 ft.) 62-67 (Little Change) **Min RH: (8500 ft.)** 30-35% (6-9% Lower)

20 FT Winds:

Slope/Valleys: Northwest facing slopes 4-8 mph after 1200, otherwise calm becoming upslope 3-6 mph after 1200.

Wise River Drainage: Down Drainage after 1100 becoming Up Drainage 4-8 mph after 1400.

Ridgetops: Northwest 6-10 Gusts to 16 mph after 1200.

CWR (0.1"+): 0% **Chance of Lighting:** 20% **LAL:** 2

Inversion: Inversions breaking around 1100. **Haines:** 3 Very Low

OUTLOOK FOR TONIGHT: Mostly Clear (0-20%).

Min Temperature (°F):

Lower Elev. (6500 ft.) 38-43
Upper Elev. (8500 ft.) 45-50

Max RH:

Lower Elev. 70-80%
Upper Elev. 50-60%

20 FT Winds:

Slope/Valleys: Upslope 3-6 mph until 2200, then downslope 2-4 mph.

Ridgetops: Becoming less than 5 mph after 2200.

CWR (0.1"+): 0% **LAL:** 1 **Haines:** 3 Very Low


EXTENDED OUTLOOK (6500 ft.):

Thursday...Partly Cloudy (50-70%). 40% Chance of Thunderstorms. High 68-73. RH: 29-34%. Winds: Southwest 8 to 12 Gusts to 17 mph. Haines: 4. CWR (0.1"+): 35%

Friday...Partly Cloudy (40-60%). 40% Chance of Thunderstorms. High 71-76. RH: 27-32%. Winds: Southwest 6 to 10 Gusts to 14 mph. Haines: 5. CWR (0.1"+): 25%

Saturday...Partly Cloudy (20-40%). 10% Chance of Thunderstorms. High 72-77. RH: 18-23%. Winds: Southwest 6 to 10 Gusts to 14 mph. Haines: 5. CWR (0.1"+): 0%

PLEASE submit your weather observations to the IMET.

| DIVISION/GROUP ASSIGNMENTS | | | | | | | |
|---|-----------|--------------------------------|------|---|----------|--------------------------------------|-------------------|
| Grouse Fire | | | | Branch | | Division | |
| | | | | | | Mike | |
| Operational Period | | | | | | | |
| 8/14/24 | 0600 | 8/14/24 | 2000 | | | | |
| Operations Personnel: | | | | | | | |
| Operations Chief (Plans) | | Troy Mueller; Joe Duran (T) | | Division/Group Supervisor | | Chris Rokosh; Zach Valentiner (T) | |
| Operations Chief (Field) | | Brandon "Bones" Bonenberger | | Air Attack Supervisor | | | |
| Safety Officer | | Brandon Hoffman, Dave Day (T) | | Medical Unit Leader | | Dan Leone | |
| RO # | Item Code | Resource | LWD | Leader Name | # Person | Report Time/Place | Report Time/Place |
| O-133 | TFLD | | 8/18 | Ryan Hennager | 1 | ICP/0600 | ICP/2000 |
| O-144 | TFLD(T) | | 8/19 | Chris Hericks | 1 | ICP/0600 | ICP/2000 |
| O-119 | HEQB | | 8/19 | Ryan Williams | 1 | ICP/0600 | ICP/2000 |
| O-124 | HEQB(T) | | 8/19 | Joel Wealton | 1 | ICP/0600 | ICP/2000 |
| O-185 | HEQB | | 8/21 | Jacob Durham | 1 | ICP/0600 | ICP/2000 |
| E-84 | FEL1 | DS JR Trucking, Inc. | 8/21 | | 1 | ICP/0600 | ICP/2000 |
| E-82 | SKD1 | DS JR Trucking, Inc. | 8/21 | Al Noack | 2 | ICP/0600 | ICP/2000 |
| E-83 | SKD1 | DS JR Trucking, Inc. | 8/21 | Rick Beeman | 1 | ICP/0600 | ICP/2000 |
| E-67 | LOGL | Akre Logging | 8/21 | Dean Akre | 1 | ICP/0600 | ICP/2000 |
| E-80 | LOGL | John Jump Trucking | 8/21 | Ricky Zao | 2 | ICP/0600 | ICP/2000 |
| E-64 | LOG | Akre Logging | 8/20 | Kirk Randolph | 1 | ICP/0600 | ICP/2000 |
| E-65 | LOG | Akre Logging | 8/20 | Brandon Clary | 1 | ICP/0600 | ICP/2000 |
| E-66 | LOG | Akre Logging | 8/20 | Sam Wylie | 1 | ICP/0600 | ICP/2000 |
| E-108 | EXC2 | Grizzley Timber, LLC | 8/21 | Carissa Jenkins | 2 | ICP/0600 | ICP/2000 |
| O-135 | THSP | | 8/19 | Sam Hodge | 1 | ICP/0600 | ICP/2000 |
| O-59 | EMPF | Medic 3 | 8/18 | John Baker | 1 | ICP/0600 | ICP/2000 |
| | | | | | | | |
| | | | | | | | |
| | | | | | | | |
| | | | | | | | |
| Work Assignments: | | | | | | | |
| END STATE: Processed logs and slash from fuels treatments are moved and relocated to designated areas away from the Pioneer Mountain Scenic Byway in accordance with local Forest's request. | | | | | | | |
| PURPOSE: To remove and reduce potential fuel loading on the fire's side of the Pioneer Mountain Scenic Byway, while maintaining the natural view of the Forest for visitor's and local residents. | | | | | | | |
| TASK: Load processed logs and slash onto the appropriate transport vehicles and safely deliver the materials to the designated drop points. Processed logs to DP 50 and slash to DP 60. | | | | | | | |
| Special Instructions: | | | | | | | |
| AMBO 1 (E-3 Fireline Medics) staged at DP-40 and available for all Divisions | | | | | | | |
| Division Mike Road Guards: Bradley Davis, John Richardson, Kevin Albrecht | | | | | | | |
| Communication Summary | | | | | | | |
| See Communication Plan | | | | | | | |
| Prepared By: Kellie Stover - RESL | | | | Signature:  | | 21 Personnel | |

DIVISION/GROUP ASSIGNMENTS

| | | | | |
|--------------------|------------------|---------|-------|--|
| Grouse Fire | Branch | | Group | |
| | Structure | | | |
| Operational Period | | | | |
| 8/14/24 | 0600 | 8/14/24 | 2000 | |

Operations Personnel:

| | | | |
|--------------------------|--------------------------------|---------------------------|-----------------------|
| Operations Chief (Plans) | Troy Mueller; Joe Duran (T) | Division/Group Supervisor | Mike Gustafson (TFLD) |
| Operations Chief (Field) | Brandon "Bones" Bonenberger | Air Attack Supervisor | |
| Safety Officer | Brandon Hoffman, Dave Day (T) | Medical Unit Leader | Dan Leone |


| RO # | Item Code | Resource | LWD | Leader Name | # Person | Report Time/Place | Report Time/Place |
|----------|-----------|-----------------|------|------------------|----------|-------------------|-------------------|
| O-142.62 | TFLD(T) | | 8/17 | Roy Kottwitz | 1 | ICP/0600 | ICP/2000 |
| O-72 | TFLD(T) | | 8/16 | Fernando Quiroga | 1 | ICP/0600 | ICP/2000 |
| E-37 | ENG6 | Whitegrass Fire | 8/16 | Cliff Whitegrass | 3 | ICP/0600 | ICP/2000 |
| E-69 | ENG6 | MT-CES E1315 | 8/23 | Nik Russell | 3 | ICP/0600 | ICP/2000 |
| E-70 | ENG6 | Mountain Man | 8/20 | Brent Leyva | 3 | ICP/0600 | ICP/2000 |
| E-117 | TRLR | BFPS Support | | Joe Johnson | 1 | ICP/0600 | ICP/2000 |
| | | | | | | | |
| | | | | | | | |
| | | | | | | | |
| | | | | | | | |
| | | | | | | | |
| | | | | | | | |
| | | | | | | | |
| | | | | | | | |
| | | | | | | | |
| | | | | | | | |
| | | | | | | | |
| | | | | | | | |
| | | | | | | | |
| | | | | | | | |
| | | | | | | | |
| | | | | | | | |
| | | | | | | | |
| | | | | | | | |
| | | | | | | | |

Work Assignments:
 END STATE: All residential structures have been returned to pre-fire state, and all deployed defensive tools have been collected and cataloged for rapid deployment in instance of wildfire.
 PURPOSE: Return the area to pre-fire state but retain needed defensive supplies in a ready state.
 TASK: Remove deployed defensive supplies from prepared structures and place them in supply.

Special Instructions:
 * Denotes IA Resource
 AMBO 1 (E-3 Fireline Medics) staged at DP-40 and available for all Divisions

Communication Summary

See Communication Plan

| | | |
|-----------------------------------|---|-----------------|
| Prepared By: Kellie Stover - RESL | Signature:  | 13 Personnel |
|-----------------------------------|---|-----------------|

CONTROLLED UNCLASSIFIED INFORMATION//BASIC (CUI)

| INCIDENT RADIO COMMUNICATIONS PLAN | | 1. INCIDENT NAME | | 2. DATE/TIME PREPARED | | 3. OPERATIONAL PERIOD DATE/TIME | | |
|------------------------------------|--------------|--------------------|--------------|------------------------|--------------|-------------------------------------|-----------------------------------|--|
| ICS-205 | | Grouse Fire | | 08-13-2024 1500 | | 08-14-2024 0600-2000 | | |
| 4. BASIC RADIO CHANNEL UTILIZATION | | | | | | | | |
| Ch # | Channel Name | Assignment | RX Frequency | RX Tone/NAC | TX Frequency | TX Tone/NAC | Mode Digital (D) Analog (A) | Remarks |
| 1 | CMD1 | Command | 170.0000 | 162.2 | 166.6750 | 162.2 | A | Sheep Mountain |
| 2 | CMD2 | Command | 170.6875 | 162.2 | 166.5750 | 162.2 | A | Stine Mountain |
| 3 | FS RPT | | 173.0875 | 167.9 | 165.7250 | 167.9 | A | Odell FS Repeater |
| 4 | FS DIR | | 173.0875 | 0.000 | 173.0875 | 123.0 | A | Big Hole Direct |
| 5 | VPOND PK | Dillon Dispatch | 173.0875 | 0.000 | 165.7250 | 103.5 | A | FS Vipond Park |
| 6 | R1SOARPT | Tactical RPT | 173.1875 | 136.5 | 164.3875 | 136.5 | A | FS Scene Of Action (SOA) RPT |
| 7 | TAC7 | DIV A | 168.0500 | 162.2 | 168.0500 | 162.2 | A | Division A |
| 8 | TAC8 | DIV M | 168.2000 | 162.2 | 168.2000 | 162.2 | A | Division M |
| 9 | TAC9 | DIV W | 168.6000 | 162.2 | 168.6000 | 162.2 | A | Division W |
| 10 | TAC10 | DIV Z | 166.7250 | 162.2 | 166.7250 | 162.2 | A | Division Z |
| 11 | TAC11 | Structure Group | 166.7750 | 162.2 | 166.7750 | 162.2 | A | Structure Group |
| 12 | TAC12 | Unassigned | 168.2500 | 162.2 | 168.2500 | 162.2 | A | |
| 13 | VMED28 | Medical | 155.3400 | 0.000 | 155.3400 | 156.7 | A | Medical/Ambulance |
| 14 | A/G PRI | Air to Ground Pri | 168.5250 | 0.000 | 168.5250 | 0.000 | A | Primary Air to Ground |
| 15 | A/G SEC | Air to Ground Sec | 169.8125 | 0.000 | 169.8125 | 0.000 | A | Secondary Air to Ground |
| 16 | AIRGUARD | EMERGENCY USE ONLY | 168.6250 | 0.000 | 168.6250 | 110.9 | A | EMERGENCY USE ONLY |
| ICS-205 | | Walter Warrick | | Current Clone Version: | | 080924 | | ALWAYS POST A HUMAN REPEATER TO RELAY MESSAGES OUT OF AREAS WHERE YOU HAVE INADEQUATE COMMUNICATIONS |
| Prepared By: | | COML | | DPH/GPH: | | Press & Hold # Key to Check Version | | |
| | | | | P-150/S/KNG/BKR: | | Look at Zone Label for Version | | |

COMMUNICATIONS UNIT 24 hr phone:

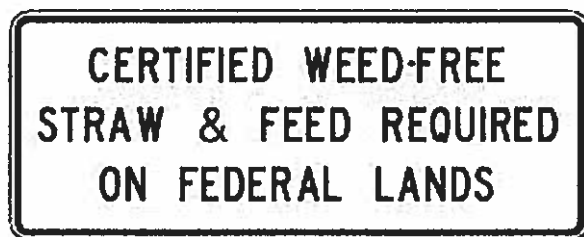
208-891-8019

CONTROLLED UNCLASSIFIED INFORMATION//BASIC (CUI)

READS and WEEDS

Invasive Species Prevention:

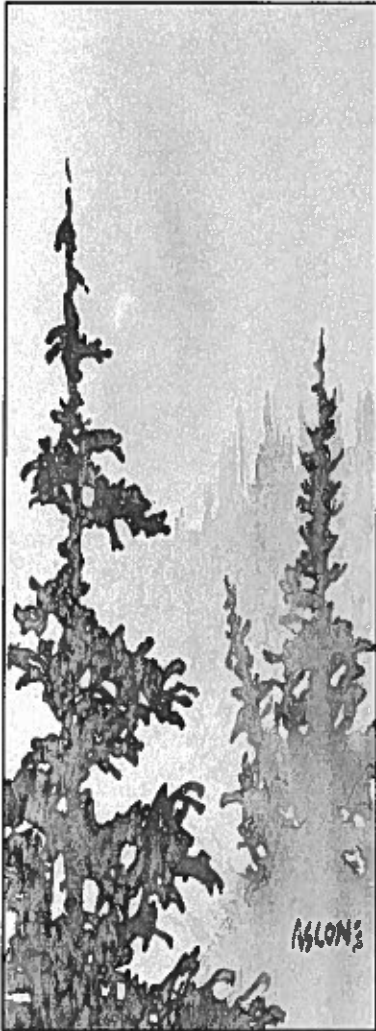
- MANDATORY weed wash at check in, before demob.
- Weed wash station available by the H bar J Bar and Grill.
 - o **MAKE SURE THEY ARE DOING A THOROUGH JOB!**
- Download **EDDmapS West** as a mobile app for a free and easy noxious weed identification, mapping and reporting tool.
- Noxious weed species noted in and around the fire areas include Spotted Knapweed, Houndstongue, Canada Thistle, Hoary Alyssum, Field Scabious, Yellow Toadflax. And probably more, I'm an archaeologist and just starting my weed journey.





HUMAN RESOURCE MESSAGE

There is zero tolerance for harassment, political activities, alcohol, or federally prohibited substances on this fire incident.



RESPECT:

Treat others as we would like to be treated and we value and learn from the strength of our diversity.

MUTUAL RESPECT:

Thoughtful concern for others, which recognizes the quality, value, and significance of the people around you.

We all came here for the same objective. Let's keep doing our jobs in a professional manner and be respectful of people with differing views/opinions.

Debby Hassel, HRSP (979) 255-5513

hrspfire@gmail.com

\$\$\$ GROUSE FINANCE PROCEDURES \$\$\$

Finance email: **2024.grouse.finance@firenet.gov**

Finance Phone Numbers

Time (Personnel and Equipment): 208-914-1873

Comp/Claims: 208-891-6348

–

Submitting Time: Please email completed CTRs and/or Shift Tickets signed by immediate supervisor **every 2 days, after submitting travel time**. Include Resource Order Number in the subject line.

- Electronic CTRs and Shift Tickets are available through the QR code on the IAP cover.
- A **legible photo** is acceptable.

**** All time must include required justifications for hazard pay, compensable meal breaks, or excess hours. Don't forget name, RO# and date. Include a valid phone # and email.**

Finance demob: Please **Email or call** Finance to notify them that you are demobing.

- Provide email and phone number on **final** CTR and/or Shift Ticket.
- Email electronic copies of your final CTRs and Shift Tickets, including travel time. Include in the email they are final documents for the incident.
- Finance will email final time documents (including OF-288/286) electronically for review and signatures.

Medical

Please work directly with the **Medical Unit Leader**. The MEDL will work with Finance to ensure forms are available and completed.

Damages or Claims

Do not wait until day of demob. An electronic OF-289, *Property Loss or Damage Report*, is available through the QR Code on the IAP cover. Contact Comp/Claims (or FSC) with questions. Include witness statements, signatures and **your contact info**.

DEMOB TIPS

Airline Flights

Contact DEMOB early to arrange your flight home. It can take up to 72 hours to process.

Weedwash

All vehicles that leave paved roads must go through weedwash located at the junction of highways 43 and 73 at the H-J.

Crew Swaps & Extensions

All crew swaps and extension requests must be initiated through your fire supervisor at least 72 hours prior to your scheduled demobilization and submitted through your respective section chief.

Demob Steps

1. Return all supplies, radios, etc. that were checked out.
2. Submit time for all personnel and equipment to finance.
3. All vehicles that have been to the fireline must go through a car/weed wash.
4. Receive a copy of your OF-288 and/or other financial documentation from Finance.
5. Complete the Demob Checkout Sheet using the QR Code located on the IAP
6. Once you submit the Demob Checkout Sheet you are released and may travel home.

Contact Demob

If you have demob, airline, flight, extensions, or crew swap questions you can contact demob at 605.381.2521 or 2024.grouse.demob@firenet.gov

Safe Travels!

DEMOB LIST

DEMOB 8/14/2024

| Request # | Item Code | Resource Name |
|-----------|-----------|--|
| A-20.4 | UASP | SNIPES, ERIC STEVEN |
| E-13 | WTS2 | BLACKTAIL FIRE SERVICES, INC. - 030574 |
| E-36 | ENG6 | BAKKEN ROBERT- 283140 |
| E-43 | DOZ3 | C C STACKING- 200059 |
| E-78 | HND2 | BT FIRE & EVENT SERVICES LLC - 012458 |
| O-132 | TFLD | LUCIER, TYSON D |
| O-142.10 | DIVS | TJADEN, JOSEPH CARL |
| O-142.41 | LSCC | SPIERING, RANDY J |
| O-142.48 | SOFC | MILLER, JASON AARON |

DEMOB 8/15/2024

| Request # | Item Code | Resource Name |
|-----------|-----------|---|
| A-20.7 | UASD | FILKINS, JOSEPH E |
| C-6 | CRWC | ANACONDA - CREW #2 - MOB # 1 |
| C-7 | CRW2 | T2C436 WEST COAST REFORESTATION INC |
| E-8 | MFSU | NANCY WHEELER DBA BBQ 4 U CATERING - MFSU |
| E-37 | ENG6 | CLIFFORD WHITEGRASS - C02841 - ENG6 |
| E-69 | ENG5 | MT-CES-1315 - ENG5 |
| O-25 | SEC2 | DAVIS, BRADLEY DODGE |
| O-71 | DIVS | GUSTAFSON, MICHAEL W |
| O-72 | TFLD | QUIROGA, FERNANDO A |
| O-75 | SECM | ARNOLD, LARRY KEVIN |
| O-115.5 | FFT1 | SHELTON, GRACE ELEANOR |
| O-115.6 | FFT2 | BARNETT, SAM DAVID |
| O-115.10 | FFT2 | EDDY, EOIN WILLIAM |
| O-129 | TFLD | SUKO, DONOVAN D |
| O-142.11 | DIVS | STEWART, BLAKE A |
| O-142.19 | BCMG | MCCOY, PATRICK A |
| O-142.40 | SECM | HANSON, DARRELL WYMAN |
| O-142.44 | FACL | HEHR, KENNETH JAMES |
| O-142.49 | MEDL | BASTIAN, KRISTINA |
| O-143 | TFLD | DUNN, ROBERT EDWARD |
| O-152 | TFLD | GORWITZ, BRIAN |

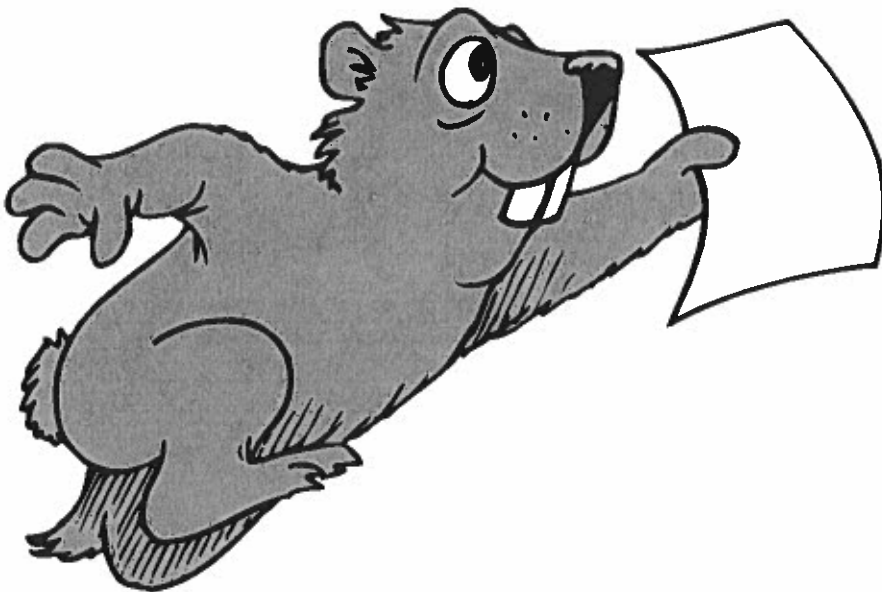
DEMOB 8/16/2024

| Request # | Item Code | Resource Name |
|-----------|-----------|--|
| A-20.5 | UASP | SMITH, MATTHEW G |
| C-14 | CRWC | ANACONDA - CREW #1 - MOB #1 - CRWC |
| E-7 | FUT2 | HART VENTURES INC - 101979 *End of Shift |
| E-27 | REF1 | THERMO KING |
| E-30.2 | DRIV | DICK, JAMES DANIEL |
| E-31 | WEED | OUTBACK FIREFIGHTING - LIC#A373 - WEED *End of Shift |
| E-41 | STMH | 4X4 FIRE SERVICES LLC - MECH 2 *End of Shift |
| E-82 | SKD1 | DS JR TRUCKING INC - 306405 - SKD1 |
| E-83 | SKD1 | DS JR TRUCKING INC - 304709 - SKD1 |
| O-107 | THSP | JENNINGS, JENNIE FAYE |
| O-118 | GSUL | WOODS, MARCUS ALAN ISAIAH |

Training Specialist Message

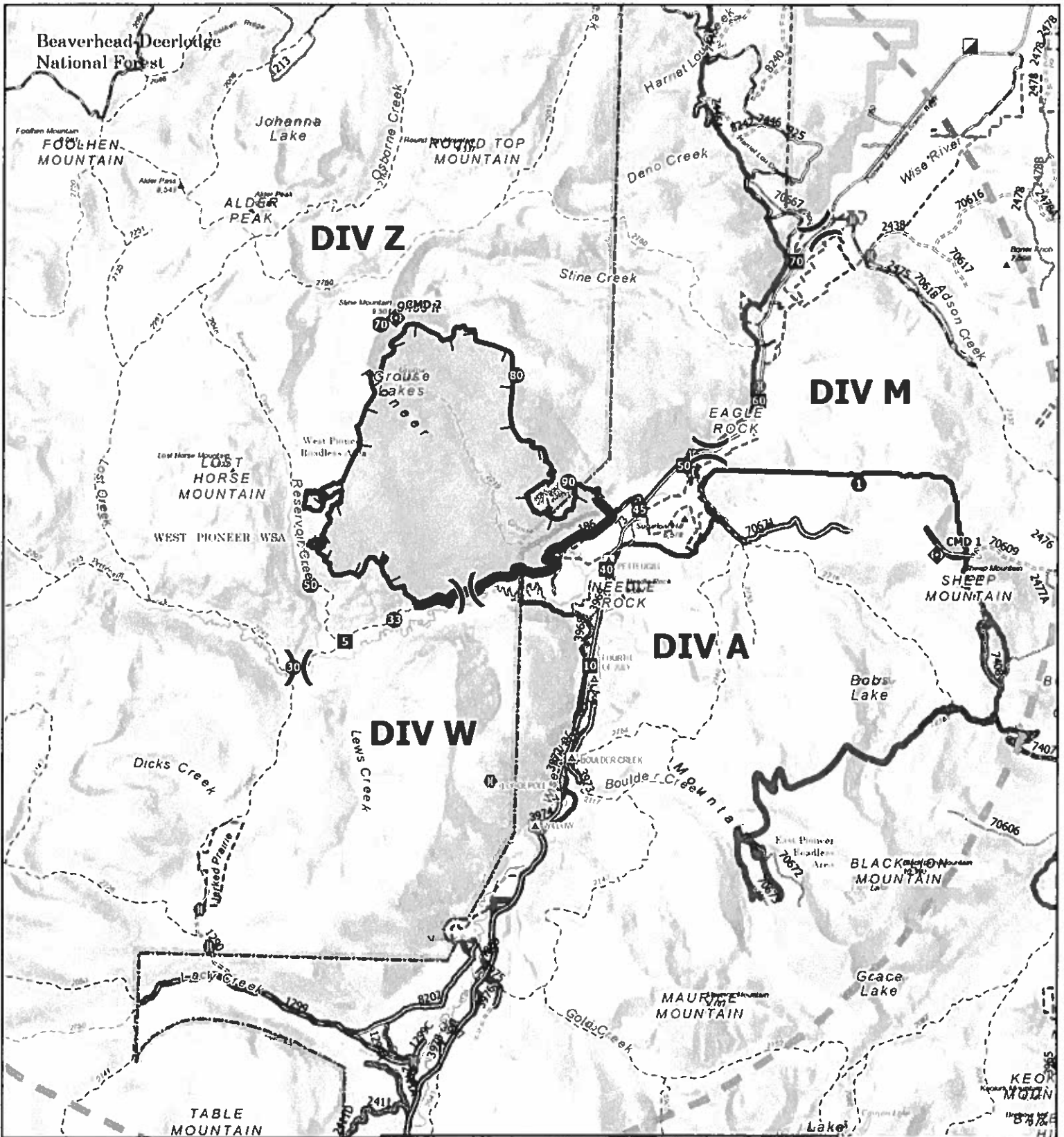
**Trainers and Trainees
Avoid the Rush!!!**

**Come by and Complete Your
Paperwork
Today!!!**



Wendy Fischer
Training Specialist
970-759-9610
wendy_fischer@firenet.gov

Carolyn Blatz
Training Specialist (T)
573-778-2810
carolyn_blatz@firenet.gov



IAP

Grouse

MT-BDF-246327

08/14/2024 Day

4,166 acres at 08/12/2024 @ 2301 MDT

0 0.25 0.5 1 1.5 2

Miles

1:100,000 | RM CIMT 3 | 8/13/2024 1825
Acres from IR
North American 1983 Datum



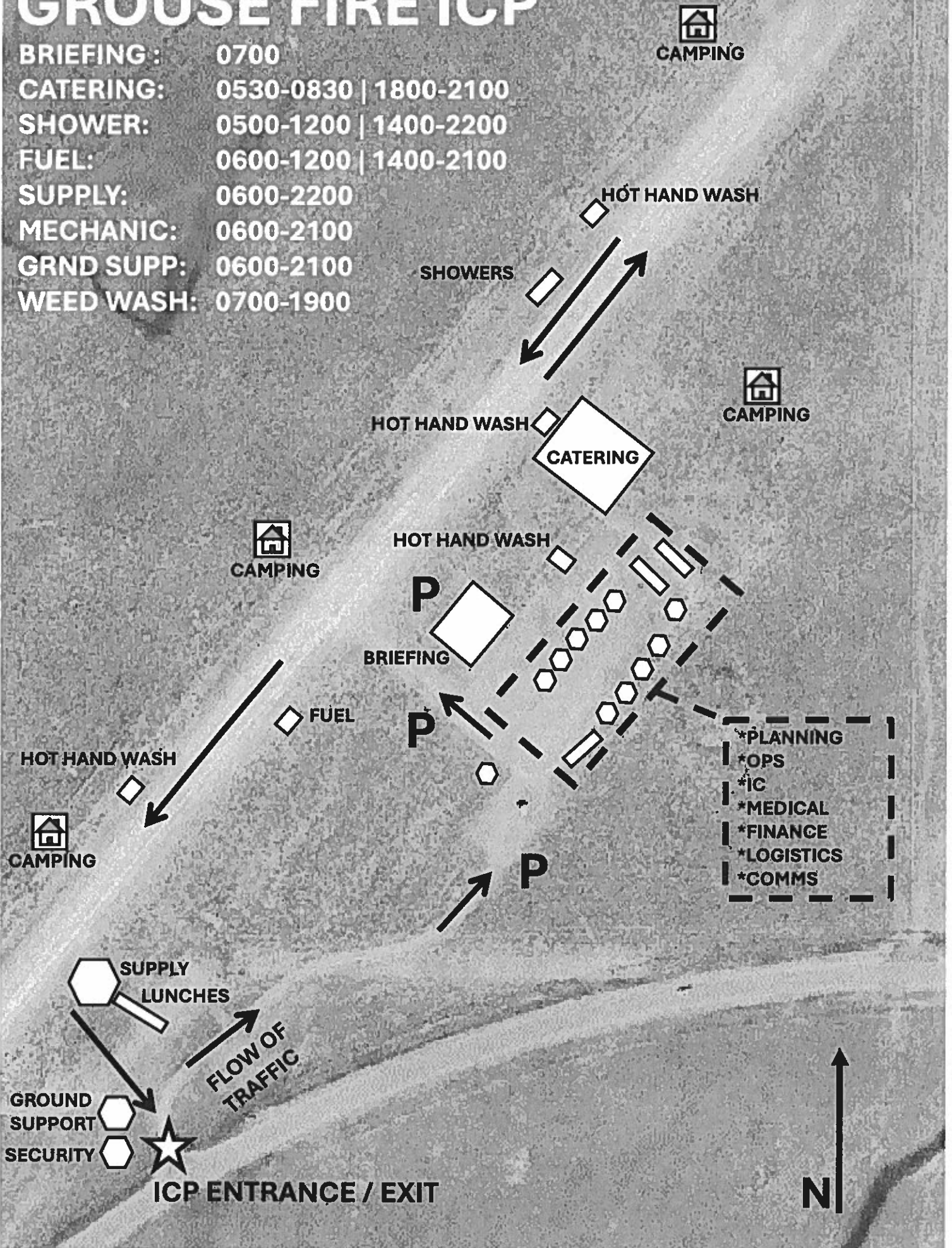
| | | | |
|--|-------------------------------|--|-----------------------------------|
| | Wildfire Daily Fire Perimeter | | Repeater |
| | Contained | | Trail |
| | Uncontained | | National Designated Trail |
| | Temporary Flight Restriction | | USFS Roadless Areas |
| | Helispot | | FS Wilderness Study Area Boundary |
| | Division Break | | Forest Service Land |
| | Incident Command Post | | Bureau of Land Management Lands |
| | Drop Point | | |



Current Maps

GROUSE FIRE ICP

BRIEFING : 0700
CATERING: 0530-0830 | 1800-2100
SHOWER: 0500-1200 | 1400-2200
FUEL: 0600-1200 | 1400-2100
SUPPLY: 0600-2200
MECHANIC: 0600-2100
GRND SUPP: 0600-2100
WEED WASH: 0700-1900



First source of supply is Cache, shaded blocks indicate items available thru Northern Rockies Cache. Items requiring an approved Property Loss and Damage form are in a separate list at the bottom.

| PART | 034/341 | 360/MS360 | MS361 | MS362 | 036/381 | D44/MS440 | MS441 | 460/MS461 | MS462 | 0640/650 | MS660 | MS880 |
|---------------------------------------|---|---|---|---|---|---|---|---|---------------------------|---|---|---|
| Spark Plug (NFES# 000344) | Bosch WSR6F NGK BPMR7A Champion RC16Y | Bosch WSR6F NGK BPMR7A Champion RC16Y | Bosch WSR6F NGK BPMR7A Champion RC16Y | Bosch WSR6F NGK BPMR7A Champion RC16Y | Bosch WSR6F NGK BPMR7A Champion RC16Y | Bosch WSR6F NGK BPMR7A Champion RC16Y | Bosch WSR6F NGK BPMR7A Champion RC16Y | Bosch WSR6F NGK BPMR7A Champion RC16Y | Bosch USR7AC NGK CMR6H | Bosch WSR6F NGK BPMR7A Champion RC16Y | Bosch WSR6F NGK BPMR7A Champion RC16Y | Bosch WSR6F NGK BPMR7A Champion RC16Y |
| Needle Cage Bearing (NFES# 066565) | 9512-933-2380 | 9512-933-2380 | 9512-933-2380 | 9512-933-2380 | 9512-933-3150 | 9512-933-2380 | 9512-933-2380 | 9512-933-2380 | 9512-933-2380 | 9512-933-2382 | 9512-933-2382 | 9512-933-3170 |
| Retaining Washer for Rim Sprocket | 0000-958-1022 | 0000-958-1022 | 0000-958-1032 | 0000-958-1032 | 0000-958-1231 | 0000-958-1032 | 0000-958-1032 | 0000-958-1032 | 0000-958-1032 | 0000-958-1032 | 0000-958-1032 | 0000-958-1236 |
| E Clip (NFES# 066517) | 9460-624-0801 | 9460-624-0801 | 9460-624-0801 | 9460-624-0801 | 9460-624-1001 | 9460-624-0801 | 9460-624-0801 | 9460-624-0801 | 9460-624-0801 | 9460-624-0801 | 9460-624-0801 | 9460-624-1001 |
| Fuel Filter | 0000-350-3504 | 0000-350-3504 | 0000-350-3504 | 0000-350-3504 | 0000-350-3504 | 0000-350-3504 | 0000-350-3504 | 0000-350-3504 | 0000-350-3518 | 0000-350-3504 | 0000-350-3504 | 0000-350-3504 |
| Air Filter - HD (NFES# 066756) | 1125-120-1626 | 1125-120-1612 | 1135-120-1600 | 1140-140-4401 | 1119-120-1611 | 0000-140-4402 | 0000-120-1654 | 0000-120-1654 | 1142-140-4402 | 0000-140-4402 | 0000-140-4402 | 0000-140-4402 |
| Pre Filter - OEM | N/A | N/A | N/A | N/A | 1119-120-1500 | 0000-141-0300 | 0000-141-0300 | 0000-141-0300 | N/A | 0000-141-0300 | 0000-141-0300 | 0000-141-0300 |
| Bar Nut (NFES# 066661) | 0000-955-0801 | 0000-955-0801 | 0000-955-0801 | 0000-955-0801 | 0000-955-0801 | 0000-955-0801 | 0000-955-0801 | 0000-955-0801 | 0000-955-0803 | 0000-955-0801 | 0000-955-0801 | 0000-955-0903 |
| Inner Slide Plate | 1122-664-1000 | 1122-664-1000 | 1122-664-1000 | 1122-664-1000 | 1119-564-1000 | 1128-664-1001 | 1138-664-1000 | 1128-664-1001 | 1128-664-1001 | 1128-664-1001 | 1128-664-1001 | 1124-664-1001 |
| STIHL RAPID - Super (RS) | | | | | | | | | | | | |
| Chain 3/8" PITCH - .050" GA - DR | | | | | | | | | | | | |
| 20" - 72 DR | 3623-005-0072 | 3623-005-0072 | 3623-005-0072 | 3623-005-0072 | 3623-005-0072 | 3623-005-0072 | 3623-005-0072 | 3623-005-0072 | 3623-005-0072 | 3623-005-0072 | 3623-005-0072 | 3623-005-0072 |
| 25" - 84 DR (NFES# 066500) | 3623-005-0084 | 3623-005-0084 | 3623-005-0084 | 3623-005-0084 | 3623-005-0084 | 3623-005-0084 | 3623-005-0084 | 3623-005-0084 | 3623-005-0084 | 3623-005-0084 | 3623-005-0084 | 3623-005-0084 |
| 28" - 91 DR | 3623-005-0091 | 3623-005-0091 | 3623-005-0091 | 3623-005-0091 | 3623-005-0091 | 3623-005-0091 | 3623-005-0091 | 3623-005-0091 | 3623-005-0091 | 3623-005-0091 | 3623-005-0091 | 3623-005-0091 |
| 32" - 105 DR | N/A | N/A | N/A | N/A | N/A | 3623-005-0105 | 3623-005-0105 | 3623-005-0105 | 3623-005-0105 | 3623-005-0105 | 3623-005-0105 | 3623-005-0105 |
| STIHL RAPID - Super - Full Skip (RSF) | | | | | | | | | | | | |
| Chain 3/8" PITCH - .050" GA - DR | | | | | | | | | | | | |
| 20" - 72 DR | N/A | 3676-005-0072 | 3676-005-0072 | 3676-005-0072 | 3676-005-0072 | 3676-005-0072 | 3676-005-0072 | 3676-005-0072 | 3676-005-0072 | 3676-005-0072 | 3676-005-0072 | 3676-005-0072 |
| 25" - 84 DR | 3676-005-0084 | 3676-005-0084 | 3676-005-0084 | 3676-005-0084 | 3676-005-0084 | 3676-005-0084 | 3676-005-0084 | 3676-005-0084 | 3676-005-0084 | 3676-005-0084 | 3676-005-0084 | 3676-005-0084 |
| 28" - 91 DR | 3676-005-0091 | 3676-005-0091 | 3676-005-0091 | 3676-005-0091 | 3676-005-0091 | 3676-005-0091 | 3676-005-0091 | 3676-005-0091 | 3676-005-0091 | 3676-005-0091 | 3676-005-0091 | 3676-005-0091 |
| 32" - 105 DR | N/A | N/A | N/A | N/A | N/A | 3676-005-0105 | 3676-005-0105 | 3676-005-0105 | 3676-005-0105 | 3676-005-0105 | 3676-005-0105 | 3676-005-0105 |
| Bar oil: Quantity - Gallon | NFES # 1880 | | | | | | | | | | | |
| Bar oil: Quantity - Quart | NFES # 1869 | | | | | | | | | | | |
| 2 Cycle Oil: Quantity - Quart | NFES # 0341 | | | | | | | | | | | |

The following parts require an approved Property Loss & Damage form prior to ordering:

| | | | | | | | | | | | | |
|--|--------------------|--------------------|--------------------|--------------------|--------------------|--------------------|--------------------|--------------------|--------------------|--------------------|--------------------|--------------------|
| Guide Bars - 3/8" - .050" GA (STIHL ROLLOMATIC - ES) | | | | | | | | | | | | |
| 20" | 3003-000-8822 | 3003-000-8822 | 3003-000-8822 | 3003-000-8822 | 3003-000-8822 | 3003-000-8822 | 3003-000-8822 | 3003-000-8822 | 3003-000-8822 | 3003-000-8822 | 3003-000-8822 | 3003-000-8822 |
| 25" (NFES# 066584) | N/A | 3003-000-8830 | 3003-000-8830 | 3003-000-8830 | 3003-000-8830 | 3003-000-8830 | 3003-000-8830 | 3003-000-8830 | 3003-000-8830 | 3003-000-8830 | 3003-000-8830 | 3003-000-8830 |
| 28" | N/A | N/A | N/A | N/A | N/A | 3003-000-8838 | 3003-000-8838 | 3003-000-8838 | 3003-000-8838 | 3003-000-8838 | 3003-000-8838 | 3003-000-8838 |
| 32" | N/A | N/A | N/A | N/A | N/A | 3003-000-8846 | 3003-000-8846 | 3003-000-8846 | 3003-000-8846 | 3003-000-8846 | 3003-000-8846 | 3003-000-8846 |
| Rim Sprocket Kit 3/8 - 7T | 1125-007-1040 | 1125-007-1223 | 1128-007-1000 | 1135-007-1002 | 1119-007-1003 | 1128-007-1000 | 1128-007-1000 | 1128-007-1017 | 1128-007-1000 | 1122-007-1000 | 1122-007-1000 | N/A |
| Clutch Drum | Order Sprocket Kit | Order Sprocket Kit | Order Sprocket Kit | Order Sprocket Kit | Order Sprocket Kit | Order Sprocket Kit | Order Sprocket Kit | Order Sprocket Kit | Order Sprocket Kit | Order Sprocket Kit | Order Sprocket Kit | Order Sprocket Kit |
| Rim Sprocket 3/8 7T (NFES# 066652) | 0000-642-1231 | 0000-642-1023 | 0000-642-1223 | 0000-642-1223 | 0000-642-1223 | 0000-642-1223 | 0000-642-1223 | 0000-642-1223 | 0000-642-1223 | 0000-642-1223 | 0000-642-1223 | N/A |
| Rim Sprocket Kit 3/8 - 8T | N/A | N/A | 1128-007-1001 | 1128-007-1001 | N/A | 1128-007-1001 | 1128-007-1001 | 1128-007-1001 | 1128-007-1001 | 1122-007-1001 | 1122-007-1001 | 1124-007-1025 |
| Clutch Drum | Order Sprocket Kit | Order Sprocket Kit | Order Sprocket Kit | Order Sprocket Kit | Order Sprocket Kit | Order Sprocket Kit | Order Sprocket Kit | Order Sprocket Kit | Order Sprocket Kit | Order Sprocket Kit | Order Sprocket Kit | Order Sprocket Kit |
| Rim Sprocket 3/8 - 8T | N/A | 0000-642-1216 | 0000-642-1216 | 0000-642-1216 | 0000-642-1216 | 0000-642-1216 | 0000-642-1216 | 0000-642-1216 | 0000-642-1216 | 0000-642-1216 | 0000-642-1216 | 0000-642-1216 |
| Clutch | 1127-160-2050 | 1125-160-2005 | 1128-160-2004 | 1138-160-2010 | 1119-160-2000 | 1128-160-2000 | 1138-160-2010 | 1128-160-2004 | 1142-160-2000 | 1122-160-2005 | 1122-160-2002 | 1124-160-2005 |
| Chain Adjuster Kit | 1125-007-1036 | 1125-007-1021 | 1125-007-1021 | 1125-007-1021 | 1118-664-1600 | 1125-007-1021 | 1125-007-1021 | 1125-007-1021 | 1125-007-1021 | 1125-007-1021 | 1125-007-1021 | 1124-007-1008 |
| Bump Strip | 1121-648-6610 | 1121-648-6610 | 1121-648-6610 | 1121-648-6610 | 1120-664-1500 | 1121-648-6610 | 1121-648-6610 | 1121-648-6610 | 1121-648-6610 | 1121-648-6610 | 1121-648-6610 | 1121-648-6610 |
| Starter Rope W/handle | 1128-190-3400 | 1128-190-3400 | 1128-190-3400 | 1128-190-3400 | 1128-190-3400 | 1128-190-3400 | 1128-190-3400 | 1128-190-3400 | 1128-190-3400 | 1128-190-3400 | 1128-190-3400 | 1128-190-3400 |
| Worm Gear (Oiler) | 1125-640-7110 | 1125-640-7110 | 1128-640-7112 | 1128-640-7112 | 1119-642-1501 | 1128-640-7112 | 1128-640-7112 | 1128-640-7112 | 1128-640-7112 | 1122-640-7105 | 1122-640-7105 | 1124-640-7512 |
| Manifold Boot | 1125-141-2200 | 1125-141-2200 | 1135-141-2200 | 1140-140-2503 | 1119-140-2500 | 1128-141-2204 | 1138-140-2508 | 1128-141-2204 | 1142-141-2200 | 1122-141-2200 | 1122-141-2201 | 1124-141-2202 |



Medical Plan (206 WF)

ROCKY MOUNTAIN INCIDENT MANAGEMENT

| | | | | | | |
|--|---|---|--|------------------------------------|----------------|---|
| 1. Incident / Project Name | | | 2. Operational Period | | | |
| Grouse Fire | | | Date/Time: 8/14/2024 0600-2000 | | | |
| 3. Ambulance Services | | | | | | |
| Name | Address | Phone and Emergency Frequency | | Advanced Life Support (ALS) | | |
| A1 Ambulance | Butte, MT | 406-490-3130 | | YES NO | | |
| Anaconda Fire <small>(can rendezvous at HWY 569/HWY 43)</small> | Anaconda, MT | 406-463-2164 | | X (most of the time) X | | |
| 4. Air Ambulance Services | | | | | | |
| Name | Phone | Type of Aircraft & Capability | | | | |
| Lifelight | 800-232-0911 Order through Grouse Communications | ALS with critical care Night Vision (will fly at night) | | | | |
| Air Idaho Rescue (Air Methods) Air 4 | 877-818-5553 Order through Grouse Communications | ALS with critical care Night Vision (will fly at night) | | | | |
| 4MA Forest IA | Order through Grouse Communications | Bell 407 HP Litter Capable (will NOT fly at night) | | | | |
| 2HX Grouse Fire | Order through Grouse Communications | Bell 429 (will NOT fly at night) | | | | |
| 5. Hospitals ***** TRAVEL TIME FROM ICP***** | | | | | | |
| Name | LAT: DD° MM.MMM'N | Travel Time From ICP | | Phone | Helipad | Level of Care |
| Complete Address | LONG: DD° MM.MMM'W | Air | Ground | | Yes /No | |
| St Vincent Regional 1233 N 30th St Billings, MT | Lat: 45° 47.658' N Long: 108° 31.003' W | 1 hr | 4 hrs | 406-657-7000 | YES | Level 1 Trauma Cardiac & Cath Lab Stroke Center |
| St Patrick Hospital 500 W Broadway St Missoula, MT | Lat: 46° 52.533' N Long: 114° 0.001' W | 45 min | 2.25 hrs | 406-543-7271 | YES | Level 2 Trauma Cardiac & Cath Lab Stroke Center |
| St James Healthcare 400 S Clark St Butte, MT | Lat: 46° 0.512' N Long: 112° 32.742' W | 35 min | 45 min | 406-723-2585 | YES | Level 3 Trauma Cardiac Certified Stroke Certified |
| Barrett Hospital 600 HWY 91 S Dillon, MT 59725 | Lat: 45° 12.097' N Long: 112° 38.839' W | 40 min | 1 hr | 406-683-3000 | YES | Level 4 |
| Community Hosp of Anaconda 401 W PennsylvaniaST Anaconda, MT | Lat: 46° 7.950' N Long: 112° 57.427' W | 35 min | 50 min | 406-563-8500 | YES | Local Emergency Room Only |
| *Travel times are from Grouse Fire ICP to the facility and DO NOT include response time to the incident. | | | | | | |
| 6. Division Branch Group | | | | | | |
| ALPHA | EMS Responders & Capabilities: | | E-3 AMBO 1 - Andrew Eills | | | |
| | Equipment Available on Scene: | | O-170 REMS 5 - Ben Lewis | | | |
| | Medical Emergency Channel: | | 4x4, UTV, ALS Kit, Rope Rescue, ALS Ambulance, Oxygen | | | |
| | | | COMMAND A/G: VMED 28 | | | |
| MIKE | EMS Responders & Capabilities: | | O-59 MEDIC 3 - John Baker | | | |
| | Equipment Available on Scene: | | 4x4, ALS Kit | | | |
| | Medical Emergency Channel: | | COMMAND A/G: VMED 28 | | | |
| WHISKEY | EMS Responders & Capabilities: | | O-58 MEDIC 4 - Becca Wallace (Spiked with Kaniksu Mod) | | | |
| | Equipment Available on Scene: | | 4x4, ALS Kit | | | |
| | Medical Emergency Channel: | | COMMAND A/G: VMED 28 | | | |
| ZULU | EMS Responders & Capabilities: | | UNSTAFFED | | | |
| | Equipment Available on Scene: | | | | | |
| | Medical Emergency Channel: | | COMMAND A/G: VMED 28 | | | |
| STRUCTURE | EMS Responders & Capabilities: | | NO MEDICAL RESOURCES ASSIGNED | | | |
| | Equipment Available on Scene: | | | | | |
| | Medical Emergency Channel: | | COMMAND A/G: VMED 28 | | | |
| 8. Prepared by: (Medical Unit Leader) | | Date | Reviewed by: (Safety Officer) | | Date | |
| /s/ Dan Leone MEDL | | 8/13/2024 | /s/ Brandon Hoffman SOFC | | 8/13/2024 | |

MEDICAL PLAN (ICS 206 WF)

Controlled Unclassified Information//Basic

Medical Incident Report

FOR A NON-EMERGENCY INCIDENT, WORK THROUGH CHAIN OF COMMAND TO REPORT AND TRANSPORT INJURED PERSONNEL AS NECESSARY.

FOR A MEDICAL EMERGENCY: IDENTIFY ON SCENE INCIDENT COMMANDER BY NAME AND POSITION AND ANNOUNCE "MEDICAL EMERGENCY" TO INITIATE RESPONSE FROM IMT COMMUNICATIONS/DISPATCH.

Use the following items to communicate situation to communications/dispatch.

1. CONTACT COMMUNICATIONS / DISPATCH (Verify correct frequency prior to starting report)

Ex: "Communications, Div. Alpha. Stand-by for Emergency Traffic."

2. INCIDENT STATUS: Provide incident summary (including number of patients) and command structure.

Ex: "Communications, I have a Red priority patient, unconscious, struck by a falling tree. Requesting air ambulance to Forest Road 1 at (Lat./Long.) This will be the Trout Meadow Medical, IC is TFLD Jones. EMT Smith is providing medical care."

| | | |
|---|--|--|
| Severity of Emergency / Transport Priority | <input type="checkbox"/> RED / PRIORITY 1 Life or limb threatening Injury or illness. Evacuation need is IMMEDIATE <i>Ex: Unconscious, difficulty breathing, bleeding severely, 2° - 3° burns more than 4 palm sizes, heat stroke, disoriented.</i> <input type="checkbox"/> YELLOW / PRIORITY 2 Serious Injury or illness. Evacuation may be DELAYED if necessary. <i>Ex: Significant trauma, unable to walk, 2° - 3° burns not more than 1-3 palm sizes.</i> <input type="checkbox"/> GREEN / PRIORITY 3 Minor Injury or illness. Non-Emergency transport <i>Ex: Sprains, strains, minor heat-related illness.</i> | |
| Nature of Injury or Illness & Mechanism of Injury | | Brief Summary of Injury or Illness <i>(Ex: Unconscious, Struck by Falling Tree)</i> |
| Transport Request | | Air Ambulance / Short Haul/Hoist Ground Ambulance / Other |
| Patient Location | | Descriptive Location & Lat. / Long. (WGS84) |
| Incident Name | | Geographic Name + "Medical" <i>(Ex: Trout Meadow Medical)</i> |
| On-Scene Incident Commander | | Name of on-scene IC of Incident within an Incident <i>(Ex: TFLD Jones)</i> |
| Patient Care | | Name of Care Provider <i>(Ex: EMT Smith)</i> |

3. INITIAL PATIENT ASSESSMENT: Complete this section for each patient as applicable (start with the most severe patient)

Patient Assessment: See IRPG page 106

Treatment:

4. TRANSPORT PLAN:

Evacuation Location (if different): (Descriptive Location (drop point, intersection, etc.) or Lat. / Long.) Patient's ETA to Evacuation Location:

Helispot / Extraction Site Size and Hazards:

5. ADDITIONAL RESOURCES / EQUIPMENT NEEDS:

Example: Paramedic/EMT, Crews, Immobilization Devices, AED, Oxygen, Trauma Bag, IV/Fluid(s), Splints, Rope rescue, Wheeled litter, HAZMAT, Extrication

6. COMMUNICATIONS: Identify State Air/Ground EMS Frequencies and Hospital Contacts as applicable

| Function | Channel Name/Number | Receive (RX) | Tone/NAC * | Transmit (TX) | Tone/NAC * |
|-------------|---------------------|--------------|------------|---------------|------------|
| COMMAND | | | | | |
| AIR-TO-GRND | | | | | |
| TACTICAL | | | | | |

7. CONTINGENCY: Considerations: If primary options fail, what actions can be implemented in conjunction with primary evacuation method? Be thinking ahead.

8. ADDITIONAL INFORMATION: Updates/Changes, etc.

REMEMBER: Confirm ETA's of resources ordered. Act according to your level of training. Be Alert. Keep Calm. Think Clearly. Act Decisively.