

Grouse Fire



Thursday August 1st
Day Operations 0700-2100

Public Information Officer (PIO) Michelle Peterson 406-210-0070

P1R4SM24 (0102)

MT-BDF-246327



Check-in, Maps, Finance Email

INCIDENT OBJECTIVES	1. Incident Name GROUSE FIRE	2. Date Prepared July 31, 2024	3. Time 2100
----------------------------	--	-----------------------------------	-----------------

4. Operational Period: **August 1, 2024 Day Operations 0700-2100**

Leaders Intent

- Risk management tools will be used to evaluate planned actions to provide an acceptable level of risk vs. reward between the risk to critical values and risk to responders.

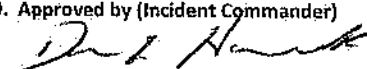
Incident Objectives

- Address the safety of firefighters, aviation and public through clear communication towards completion of objectives.
- Use a full suppression strategy with a combination of direct, indirect, and point zone protection tactics where reasonable to protect the identified critical values at risk.
- Develop contingency plans that identify locations and specific actions to be taken in the event the fire threatens or moves significantly towards the Pioneer Scenic By-way, Jerked Prairie, or Hwy 43.
- Coordinate with the Forest Archaeologist regarding cultural resources within the vicinity of the incident.
- Continue to ensure timely and accurate information is provided to the public including the DNRC, BLM, partners and stakeholders impacted by the fire regarding closure areas and other ongoing activities related to the Grouse Fire.

8. **Attachments (X if attached)**

<input checked="" type="checkbox"/>	ICS 203	<input checked="" type="checkbox"/>	ICS 205 Incident Radio Comm Plan	<input type="checkbox"/>	Division Supply Order Form
<input checked="" type="checkbox"/>	Incident Weather Forecast	<input type="checkbox"/>	Fire Information Message	<input checked="" type="checkbox"/>	NR Chainsaw Parts Order Form
<input type="checkbox"/>	Fire Behavior Forecast	<input type="checkbox"/>	Resource Advisor Message	<input checked="" type="checkbox"/>	Incident Map
<input checked="" type="checkbox"/>	Safety Message	<input type="checkbox"/>	Human Resource	<input checked="" type="checkbox"/>	ICS 206 Medical Plan
<input checked="" type="checkbox"/>	ICS 204 Division Assignment Lists	<input type="checkbox"/>	Training Message	<input checked="" type="checkbox"/>	ICS 214 Activity Log
<input checked="" type="checkbox"/>	ICS 220 Air Operations Summary	<input checked="" type="checkbox"/>	Finance Message	<input checked="" type="checkbox"/>	Medical Incident Report – 8 Line

9. Prepared by SITL
Katie Bonogofsky (T)

9. Approved by (Incident Commander)


ORGANIZATION ASSIGNMENT LIST		9. Operations Section	
1. Incident Name Grouse Fire MT-BDF-246327		Line Ops Planning Ops	Aaron Jones; Greg Campbell Don Hammack
		a. Branch I - Divisions/Groups	
2. Date July 31, 2024	3. Time 2100	Branch Director	
4. Operational Period July 31, 2024 Day Operations 0700--2100		Division A	Brian Gorwitz Tyson Luicer (T)
5. Incident Commander and Staff		Division M	Unstaffed
Incident Commander	Richard Griffin Caleb Olander (T)	Structure	Gordon Wegley; Evan Burke (T)
Deputy			
Safety Officer	Donald Garringer		
Information Officer	Michelle Peterson	b. Branch II - Divisions/Groups	
Liaison Officer		Branch Director	
6. Agency Representatives		Division/Group	
Agency	Name	Division/Group	
BDNF	Anton Brennick; Kristen Thompson (T)	Division/Group	
Resource Advisors		c. Branch III - Divisions/Groups	
7. Planning Section			
Chief			
Resources Unit			
SCKN			
Situation Unit	Robert Bundy (T); Katie Bonogofsky (T)		
Demobilization Unit			
Documentation Unit		c. Air Operations Branch	
GISS		Air Operations	
IMET		Air Attack	
SOPL		FAO Acting	Noah Criner
FBAN		Helicopter Coord	
HRSP		Helibase Manager	
LTAN		Air Tanker Coord	
ITSS		10. Finance Section	
Air Quality		Chief	Ellie Miller; Arden Ward; Allison Weakland
8. Logistics Section		Deputy	
Planning Logistics	Randy Rector	Time Unit	
Field Logistics		Procurement	
Supply Unit		Comp/Claims Unit	
Ordering Manager		Cost Unit	
Ground Support			
Food Unit			
Medical Unit		Prepared by SITL (T)	
Communication Unit			
Security Unit			
Facilities Unit			
Base Camp Manager			

Fire Weather Forecast:

.DISCUSSION...High pressure will continue to establish itself over the region over the next few days. Expect thermal belts to strengthen each night. Thursday will be a sunny, hot, and dry day, with Friday being slightly warmer with slightly lower RH values. Again, expect terrible humidity recoveries overnight.

.THURSDAY...

- * Sky/Weather.....Mostly sunny.
- * CWR (> 0.10 Inch)...0 percent.
- * Chance Lightning....0 percent.
- * LAL.....1.
- * Max Temperature.....72-76.
- * Min Humidity.....18-23 percent.
- * Wind (20 ft).....Southwest 8-13 mph.
- * Mixing Height.....2500 ft agl increasing to 8500 ft agl.
- * Mixing Winds.....Southwest 5 mph.
- * Haines Index.....5 moderate.
- * Precip Amount.....0.00 inches.

.THURSDAY NIGHT...

- * Sky/Weather.....Mostly clear.
- * CWR (> 0.10 Inch)...0 percent.
- * Chance Lightning....0 percent.
- * LAL.....1.
- * Min Temperature.....55-60.
- * Max Humidity.....36-41 percent.
- * Wind (20 ft).....Northwest 5-10 mph.
- * Mixing Height.....6500 ft agl decreasing to less than 100 ft agl early in the evening.
- * Mixing Winds.....Northwest 5 mph.
- * Precip Amount.....0.00 inches.

.FRIDAY...

- * Sky/Weather.....Mostly sunny.
- * CWR (> 0.10 Inch)...0 percent.
- * Chance Lightning....0 percent.
- * LAL.....1.
- * Max Temperature.....77-82.
- * Min Humidity.....15-19 percent.
- * Wind (20 ft).....Southwest around 5 mph shifting to the northwest 6-9 mph in the afternoon.
- * Mixing Height.....2500 ft agl increasing to 11000 ft agl.
- * Mixing Winds.....West 5 mph.
- * Haines Index.....5 moderate.
- * Precip Amount.....0.00 inches.

HEALTH AND SAFETY MESSAGE

SAFETY starts with *YOU*

We are ALL accountable for SAFE behaviors

INCIDENT: Grouse

DATE: 08/1/24

Operational Period: 0700-2100

Major Hazards and Risks: **Critical Fire Weather**

**Remember The Northern Rockies Critical Thresholds of
80° F 20% RH 20mph Winds**

Remember, trigger points are not decision-makers but serve as predetermined cues to prompt you to re-evaluate the current and potential situation and its associated risks. They help you to determine and implement the proper course of action.

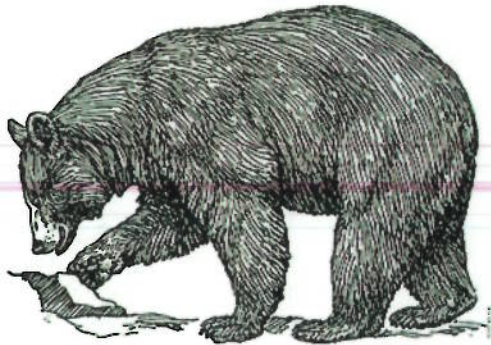
Use trigger points for preplanning. Do not wait until you are in the wrong place at the wrong time – with no time

Trigger points should be based on measurable factors such as: Relative Humidity (RH), Winds, Fire behavior, Topographical boundaries, Time constraints/time of day, Time/distance to safety zones, Loss of suppression resources, firefighter fatigue, loss of lookouts or communication, and weather change

As you approach predetermined trigger points, go through the Risk Management Process to help you decide if a change in tactics is required

Make sure everyone knows and follows the new plan.

Be Bear aware!



The bear wants some easy food. Keep food out of your tent, in the back of pick-up trucks, and near your sleeping area unless you want a guest!

Pack it in, Pack it out!

Properly dispose of everything, even on the fireline.

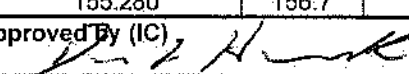
IF YOU ARE ON THE LINE

KNOW HOW TO OPERATE IF THERE IS A MEDICAL EMERGENCY!

- Where is the closest EMT or first responder?
- Do you know the correct frequencies?
- Who do you contact and with what information?
- Patient assessment?
- Where is the closest evacuation route to where you are working?
- Do you have a contingency plan?
- Ground transport or air?
- Are you thinking ahead?
- Acting according to your level of training?
- Refer to IRPG page 105-119 Emergency Medical Care Guidelines, Pink Pages.

Don Garringer, Safety Officer

ASSIGNMENT LIST				1. Branch		2. Division/Group		DIVISION A	
3. Incident Name				4. Operational Period:					
Grouse Creek Fire				Date: August 1, 2024 Time: 0700-2100					
5. Operations Personnel									
Line Operations		Aaron Jones; Greg Campbell			Division Supervisor		Brian Gorwitz		
Planning Operations		Don Hammack					Tyson Luicer (T)		
Air Operations					Safety		Donald Garringer		
6. Resources Assigned This Period									
Strike Team/Task Force/ Resource Designator	Last Shift	Leader	No. Pers.		Trans. Neede	Drop Off PT./Time	Pick Up PT./Time		
CRW1 Bonneville IHC	8/14	Evans	22		N	0600/ICP	2200		
CRW2 NY1	8/5	Prackajto	20		N	0600/ICP	2200		
CRW2 Greyback 2A	8/2	Babbitt	20		N	0600/ICP	2200		
ENG6 CNF-612	8/7	Lehmen	6		N	0600/ICP	2200		
SKG1-Bigfoot	8/11	Spencer	2		N	0600/ICP	2200		
Butte fire w/UTV	8/12	Mjelde	2		N	0600/ICP	2200		
7. Control Operations									
Task – Prep for firing operations from Pettengill Creek along 186 RD and north along HY 73.									
Purpose – Conduct firing operations as needed to keep fire west of 73 and north of Pettengill Creek.									
End State – Fire stays to the west and north of Pettengill.									
8. Special Instructions:									
-Utilize UAS PSD to minimize fire severity during firing operation.									
-AMBO staged at DP-40, available to whole incident.									
-Butte Fire in Alpha has 1 paramedic and 1 EMT.									
9. Division/Group Communication Summary									
Function	Frequency - RX	Frequency - TX	TX Tone	RX Tone	Chann	Comments			
Dillon Dispatch	173.08750	165.72500	103.5		1	Tone guard number 8 (103.5).			
R1 SOA RPT	173.1875	164.38750	136.5	136.5	2				
TACTICAL	168.05000	168.05000	156.7		3				
MUTUAL AID	154.07000	154.07000	156.7		6				
A/G PRIMARY	168.52500	168.52500			9				
A/G SECONDARY	169.81250	169.81250			10				
MEDICAL A/G	155.34000	155.34000	156.7		11				
Air Guard	168.62500	168.62500	110.9		12				
Ground Medical	155.280	155.280	156.7		13				
Prepared by SITL Katie Bonogofsky (T)			Approved by (IC) <i>[Signature]</i>						

ASSIGNMENT LIST			1.Branch	2. Division/Group	DIVISION M		
3. Incident Name Grouse Creek Fire			4. Operational Period: Date: August 1, 2024 Time: 0700-2100				
5. Operations Personnel							
Line Operations Planning Operations	Aaron Jones; Greg Campbell Don Hammack			Division Supervisor		Unstaffed	
Air Operations				Safety		Donald Garringer	
6. Resources Assigned This Period							
Strike Team/Task Force/ Resource Designator	Last Shift	Leader	No. Pers.		Trans. Needs	Drop Off PT./Time	Pick Up PT./Time
7. Control Operations							
Task –							
Purpose –							
End State –							
8. Special Instructions:							
-AMBO staged at DP-40, available to whole incident. -Butte Fire in Alpha has 1 paramedic and 1 EMT.							
9. Division/Group Communication Summary							
Function	Frequency - RX	Frequency - TX	TX Tone	RX Tone	Chann	Comments	
Dillon Dispatch	173.08750	165.72500	103.5		1	Tone guard number 8 (103.5).	
R1 SOA RPT	173.1875	164.38750	136.5	136.5	2		
TACTICAL	168.05000	168.05000	156.7		3		
MUTUAL AID	154.07000	154.07000	156.7		6		
A/G PRIMARY	168.52500	168.52500			9		
A/G SECONDARY	169.81250	169.81250			10		
MEDICAL A/G	155.34000	155.34000	156.7		11		
Air Guard	168.62500	168.62500	110.9		12		
Ground Medical	155.280	155.280	156.7		13		
Prepared by SITL Katie Bonogofsky (T)			Approved By (IC) 			Date 7/31/24	Time 2100

ASSIGNMENT LIST	1.Branch	2. Division/Group	STRUCTURE
------------------------	----------	-------------------	------------------

3. Incident Name Grouse Creek Fire	4. Operational Period: Date: August 1, 2024 Time: 0700-2100
--	--

5. Operations Personnel			
Line Operations Planning Operations	Aaron Jones; Greg Campbell Don Hammack	Division Supervisor	Gordon Wegley Evan Burke (T)
Air Operations		Safety	Donald Garringer

6. Resources Assigned This Period							
Strike Team/Task Force/ Resource Designator	Last Shift	Leader	No. Pers.	Trans. Neede	Drop Off PT./Time	Pick Up PT./Time	
B-D MOD	8/1	Fowler	11	N	0600/ICP	2200	
CRW2 Greyback 2B	8/2	Dougherty	20	N	0600/ICP	2200	
CRW2 Lava	8/14	Trujillo	20	N	0600/ICP	2200	
ENG6-BDF-621**	8/8	Elienne	4	N	0600/ICP	2200	
ENG6 Greywolf	8/13	Grant	3	N	0600/ICP	2200	
Water tender-Blacktail	8/10	Smith	1	N	0600/ICP	2200	

7. Control Operations
<p>Task – Test current structure protection and continue installing structure protection.</p> <p>Purpose – Protect structures and stop fire impact to structures in Pettengill.</p> <p>End State – Private property and structures protected.</p>

8. Special Instructions:
<p>** IA</p> <p>-AMBO staged at DP-40, available to whole incident.</p> <p>-Butte Fire in Alpha has 1 paramedic and 1 EMT.</p>

9. Division/Group Communication Summary						
Function	Frequency - RX	Frequency - TX	TX Tone	RX Tone	Chann	Comments
Dillon Dispatch	173.08750	165.72500	103.5		1	Tone guard number 8 (103.5).
R1 SOA RPT	173.1875	164.38750	103.5	136.5	2	
TACTICAL	168.20000	168.20000	156.7		4	
MUTUAL AID	154.07000	154.07000	156.7		6	
A/G PRIMARY	168.52500	168.52500			9	
A/G SECONDAR	169.81250	169.81250			10	
MEDICAL A/G	155.34000	155.34000			11	
Air Guard	168.62500	168.62500	110.9	110.9	12	
Ground Medical	155.280	155.280	156.7		13	

Prepared by SITL Katie Bonogofsky (T)	Approved by (IC) 	Date 7/31/24	Time 2100
--	----------------------	-----------------	--------------

AIR OPERATIONS SUMMARY		Prepared By:	Noah Criner	Prepared Date:	7/31/2024	Prepared Time:	19:00
1. INCIDENT NAME: B-D IA/Support		2. Operational Date: August 1, 2024		Start Time: 0900		3. Butte Sunset: 20:59 Butte Pumpkin: 21:29	
4. Remarks Safety Notes, Hazards, Air ops Mission plan for density altitude (DA) and windy conditions Report any unauthorized/UAS activity Wash bucket, if moving between dipsites over Contentinal Divide. Offer constructive feedback to pilots during tactical operations Status current at time of report. Changes occur constantly.		5. Medevac Aircraft: Order through dispatch Life Flight ALS 800-232-0911 7HX Litter					
6. TFRs: 4/9073 Hughes Point Bitterroot fire by Lost trail Pass 4/9355 Grouse Fire							
7. Personnel:		Phone #	AM	FM			
B-D FAO	Bert Smith	406-660-7371		168.6500 Rx/Tx Tn 110.9			
Acting FAO	Nicholas Plovanic	406-366-0179		168.6250 Rx/Tx Tn 110.9			
Dillon Dispatch	Aircraft Desk	406-683-3939					
N205GE	Jeremy Neal	541-217-6031	IA A/G 29	166.9000			
N27HX	Gabrial Quintana	505-542-2752	IA A/G 26	166.6875			
Grouse UAS	Andrew Benage	505-709-0871	IA A/A Primary	119.6250			
Type 1 Heli on order			IA A/A Secondary	134.1500			
Type 1 Heli On order			Medical TAN	155.340 Tx Tn 156.7			
			Medical WHITE	155.280 Tx Tn 156.7			
			DNRC A/G Yellow	151.2200			
			DNRC A/G Orange	151.4000			
			Grouse Fire	120.1000			
			A/A Primary				
			Grouse A/G Primary	168.5250			
			Grouse A/G Secondary	169.8125			
		SMJK GACC: Order through dispatch					
HELICOPTERS/UAS							
FAA N#	Call Sign	Make/Model	Type	Base	Available	Remarks	
N205GE	5GE	UH-1H	2	KBTM	830	Restricted/Forest IA	
N27HX	7HX	Bell 407	3	Wise River	830	Standard/ Forest IA	
	UR31	UAS		Wise River		Assigned to Grouse Fire	
Notes/Remarks							
Flight follow through appropriate dispatch until contact has been made on the incident. Then flight follow local. Cost Summaries Bertram.smith@usda.gov							

ICS 205 - INCIDENT RADIO COMMUNICATIONS PLAN

1. Incident Name: GROUSE Incident Channels		2. Date/Time Prepared		3. Operational Period:					
		Date: 7/31/24	Date: From: 08/01/24	Date To: 08/01/24					
		Time: 21:30	Time From: 0700	Time To: 2100					
4. Communications									
Ch#	Function	Name	Assigned To	Rx Freq	Rx Tone	Tx Freq	Tx Tone	Mode	Notes
1	DILLON DISPATCH	VIPOND PARK	All Divisions	173.08750		165.72500	103.5	A	Tone guard number 8 (103.5).
2	TACTICAL RPT	R1 SOA RPT	All Divisions	173.1875	136.5	164.38750	136.5	A	
3	TACTICAL	TAC 1	DIV A	168.05000		168.05000	156.7	A	
4	TACTICAL	TAC 2	UNASSIGNED	168.20000		168.20000	156.7	A	
5	TACTICAL	TAC 3	STRUCTURE GROUP	168.60000		168.6000	156.7	A	
6	MUTUAL AID	RED	All Divisions	154.07000		154.07000	156.7	A	
7	MUTUAL AID	MAROON	UNASSIGNED	154.28000		154.28000	156.7	A	
8	MUTUAL AID	GOLD	UNASSIGNED	153.90500		153.90500	156.7	A	
9	A/G PRIMARY	A/G 1	All Divisions	168.52500		168.52500		A	
10	A/G SECONDARY	A/G 2	All Divisions	169.81250		169.81250		A	
11	LIFEFIGHT A/G	TAN	All Divisions	155.34000		155.34000	156.7	A	
12	Air Guard	Air Guard	All Divisions	168.62500	110.9	168.62500	110.9	A	
13	Ground Medical	White	All Divisions	155.280		155.280	156.7	A	
15									
16									
17									
18									
19									
20									
5. Special Instructions									
6. Prepared by: Katie Bonogofsky S1TL (T)								Signature:	
ICS 205 - CONTROLLED UNCLASSIFIED INFORMATION/BASIC								Date/Time:	

Finance Contact:

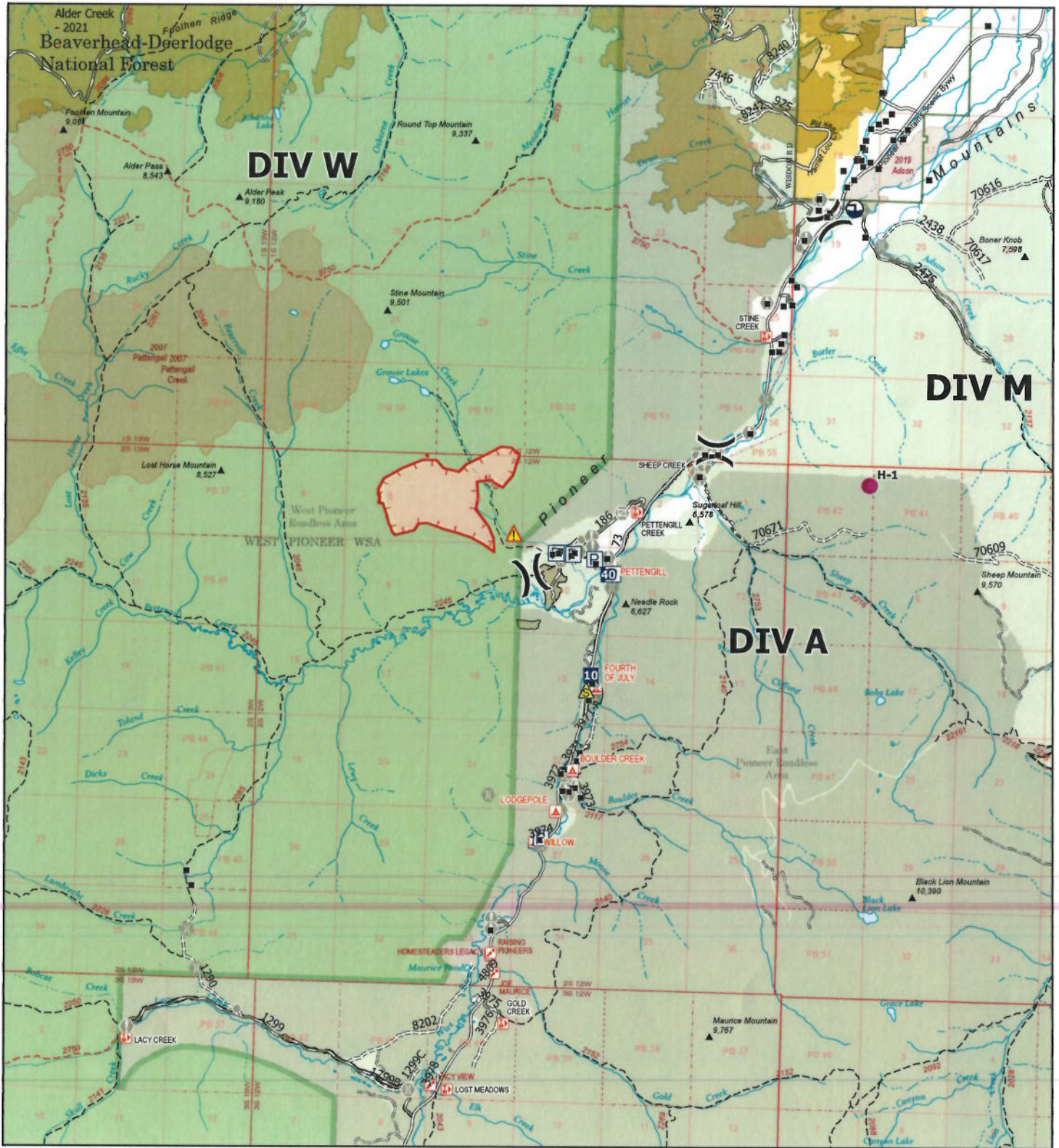
2024.grouse.finance@firenet.gov

Arden Ward:
575-342-2044

Resource Advisor Messages:

- The local rivers have aquatic invasive species such as whirling disease and New Zealand mud snails. If used as a last resort, make sure not to drop water into any other waterways and do not cross-contaminate buckets.
- No water west of the Continental Divide. There are good options on the east side.
- Avoid dipping or scooping water from multiple water sources within the same operational period to minimize cross-contamination of water sources.
- Use deeper (blue) water whenever possible. Avoid areas that will intake mud or plants.
- Avoid transferring water between drainages or between unconnected waters within the same drainage.
- Do not dump water directly from one stream or lake into another. Avoid spraying suppression water into local waterbodies (ponds, lakes, rivers, streams, wetlands, seeps, or springs).
- **Do not dip out of Bobcat or Schwinger lakes!**





IAP
Grouse
MT-BDF-246327
08/01/2024 Day

800 estimated acres at 07/31/2024 @ 1500 MDT



Miles



1:100,000 | RIST 2024 | 7/31/2024 1859
 Estimate
 North American 1983 Datum, Lat/Long Grid

■ Structure	▲ Hazard	== Road, high clearance
● Helispot	⊕ Draft Site	--- FS Closed Road
⌘ Division Break	H— Completed Hand Line	● Infrastructure Bridge EDW Deck Type
■ Drop Point	— Access Route	● USFS Roadless Areas
⊕ Value at Risk	— Uncontained	● FS Wilderness Study Area Boundary
⊕ Other	▭ Wildfire Daily Fire Perimeter	● Forest Service Land
⊕ Gate	— Road	■ Bureau of Land Management Lands
⊕ Bridge	— Road, Dirt/Gravel	▭ Interagency Fire Perimeter History Since 2004
⊕ Culvert	— Road, Paved	▭ Interagency Fuels Treatments
▲ Safety Zone	— Road, Dirt/Gravel	■ Alder Creek 2021



MEDICAL PLAN (ICS 206)

MEDICAL PLAN ICS 206	1. INCIDENT NAME Grouse	2. DATE PREPARED 7/31/2024	3. TIME PREPARED 1600	4. OPERATIONAL PERIOD 8/1/2024 0700-2100		
5. INCIDENT MEDICAL AID STATIONS						
MEDICAL AID STATIONS	LOCATION	PARAMEDICS				
		YES	NO			
*ICP Medical Unit	*Base Camp(not fully staffed yet)	*X				
6. TRANSPORTATION						
A. AIR AMBULANCES						
NAME	LOCATION	PHONE	PARAMEDICS			
			YES	NO		
Helpflight	Billings, MT	406-346-2715	X			
Helena Short Haul	Helena, MT	Air Ops		X		
Lifeflight Network	Butte, MT	Dillon Dispatch	X			
B. GROUND AMBULANCES						
NAME	LOCATION	PARAMEDICS				
		YES	NO			
A1 Ambulance Service	Butte, MT	X				
Anaconda Ambulance	Anaconda, MT	X				
Fireline Medics Ambulance	DP-40	X				
7. HOSPITALS						
NAME	ADDRESS	TRAVEL TIME		PHONE	HELIPAD	
		AIR	GROUND		YES	NO
St. James Healthcare	400 S. Clark Butte, MT	10min	50min	406-723-2585	X	
St. Patrick Hospital	500 W. Broadway St. Missoula, MT	40min	2.5hr	406-748-3600	X	
Community Hosp of Anaconda	401 W. Pennsylvania St. Anaconda MT	10min	90 min	406-563-8500	X	
St. Vincent Regional	1233 N 30th St, Billings, MT	60 min	4 hr 15	406-657-7000	X	
8. MEDICAL EMERGENCY PROCEDURES						
<p style="text-align: center;"><u>LINE "MEDICAL-EMERGENCY" PLAN:</u></p> <p>Reporting Party to contact Dillon Dispatch on Vipond with:</p> <p>* Patient Complaint, Condition and Location via Tactical or Command Frequency.</p> <p>*Red, Yellow & Green Patients Trigger Incident Within Incident (IWI) *Refer to IWI plan in this IAP.*</p> <p>* The highest qualified responder will run "Medical-Emergency" on the assigned frequency assuming the role of IWI IC.</p> <p>*IWI IC will use "Medical Incident Report" worksheet in the IAP or IRPG.</p> <p>* Dispatch contacts Medical Unit Leader on the assigned frequency or cell phone.</p>				<p style="text-align: center;"><u>Medical Unit Contacts:</u></p> <p>Dave Poxleitner: MEDL 406-420-3744* temp</p> <p style="text-align: center;"><u>IN CAMP</u></p> <p>MEDL first, then FM Ambo", or "Butte Fire", nights</p> <p>*Contact MEDL as soon as possible. Can escalate to Dispatch or 911 if needed or urgent.</p>		
ICS 206 WF	9. PREPARED BY: (Medical Unit Leader) MEDL			10. REVIEWED BY: (Safety Officer)		
	Dave Poxleitner			Don Garringer		

MEDICAL PLAN (ICS 206 WF)

1. INCIDENT/PROJECT NAME							
Grouse				Date/Time: 8/1/2024			
3. AMBULANCE SERVICES							
NAME	COMPLETE ADDRESS	PHONE	PARAMEDICS				
			YES	NO			
A1 Ambulance	507 Centennial Ave, Butte, MT	406-490-3130	X				
Jefferson Valley EMS	203 W. Legion Ave, Whitehall, MT	406-346-2715	X				
4. AIR AMBULANCE SERVICES							
NAME	PHONE	TYPE OF AIRCRAFT/CAPABILITY					
Helpflight- Billings, MT	406-238-6215	EC-145					
Helena Short Haul	Dillon Dispatch	Bell 407					
Lifeflight Network	800-232-0911	Augusta 119 Koala					
NAME AND COMPLETE ADDRESS	GPS DATUM-WGS 84 COORDINATE STANDARD	TRAVEL TIME		PHONE	HELIPAD		FACILITY LEVEL OF CARE
		AIR	GROUND		YES	NO	
St. James Healthcare 400 S.Clark St., Butte,MT	LAT: N 46-00.542500	10 min	50 min	406-723-2585	X		Level 3
	LONG: W 112-32.8623						
	VHF:						
St. Patrick Hospital 500 W. Broadway St, Missoula	LAT: N 46-52.527333	40 min	2.5hr	406-748-3600	X		Level 2
	LONG: W 113-59.9865						
	VHF:						
Community Hosp of Anaconda 401 W. Pennsylvania St., Ana.	LAT: N 46-7.93	10 min	90 min	406-563-8500	X		Level 3
	LONG: W 112-57.43						
	VHF:						
St. Vincent Regional 1027 N. 27th St., Billings,MT	LAT: N 45-47.626667	60 min	3 hrs 20 mins	406-657-7000	X		Level 1
	LONG: W 108-31.1150						
	VHF:						
6. DIVISION/BRANCH/GROUP		AREA/LOCATION/CAPABILITY					
Alpha	EMS Responders & Capability:			EMPF Luer+EMTF Hardesty=Fireline Medics EMPF Perry+EMTF Mjelde= Butte Fire			
	Equipment Available on Scene:			ALS & BLS Trauma gear, O2, Stokes, UTV			
	Medical Emergency Channel			Command/Vipond Park Rptr			
	ETA for Ambulance to Scene:						
	Air:						
	Ground:						
	Approved Helispot:						
	Lat:						
	Long:						
	Structure	EMS Responders & Capability:			EMPF Luer + EMTF Hardesty=Fireline Medics EMPF Perry + EMTF Mjelde=Butte Fire		
Equipment Available on Scene:			ALS and BLS Trauma gear, UTV				
Medical Emergency Channel			Command/Vipond Park Rptr				
ETA for Ambulance to Scene:							
Air:							
Ground:							
Approved Helispot:			Wise River RD				
Lat:			N 45. 47.485				
Long:			W 112. 56. 500				
Approved Helispot:							
Lat:							
Long:							
8. PREPARED BY (MEDICAL UNIT LEADER)			9. DATE TIME	10. REVIEWED BY (SAFETY OFFICER)			11. DATE TIME
Dave Poxleitner			7/31 1800	Don Garringer			7/31 1800

MEDICAL PLAN (ICS 206 WF)

6. DIVISION/BRANCH/GROUP	AREA/LOCATION/CAPABILITY		
Mike (Unstaffed)	EMS Responders & Capability:		
	Equipment Available on Scene:		
	Medical Emergency Channel		
	ETA for Ambulance to Scene:		
	Air:		
	Ground:		
	Approved Helispot:		
	Lat:		
	Long:		
Swing/Night (Unstaffed)	EMS Responders & Capability:		
	Equipment Available on Scene:		
	Medical Emergency Channel		
	ETA for Ambulance to Scene:		
	Air:		
	Ground:		
	Approved Helispot:		
	Lat:		
	Long:		
	EMS Responders & Capability:		
	Equipment Available on Scene:		
	Medical Emergency Channel		
	ETA for Ambulance to Scene:		
	Air:		
	Ground:		
	Approved Helispot:		
	Lat:		
	Long:		
	EMS Responders & Capability:		
	Equipment Available on Scene:		
	Medical Emergency Channel		
	ETA for Ambulance to Scene:		
	Air:		
	Ground:		
	Approved Helispot:		
	Lat:		
	Long:		
9. PREPARED BY (MEDICAL UNIT LEADER)	9. DATE TIME	10. REVIEWED BY (SAFETY OFFICER)	11. DATE TIME
Dave Poxleitner	7/31 1800	Don Garringer	7/31 1800

Grouse Fire Incident Within an Incident: Emergency Action Plan

LEADERS INTENT - To provide efficient patient care and facilitate rapid transport to definitive care. In the case of a serious accident requiring patient transport to a medical facility:

- The IWI commander will be established at the incident scene.
- The closest ranking Operations Leader will proceed to the IWI site and assist if necessary.
- Use the 8-line protocol to assess patient; if patient evaluation is either Red or Yellow, use **VIPOND PARK frequency (Command) 173.08750 RX, 165.72500 TX, tone 103.5 on TX to contact Dillon Dispatch to initiate medical IWI.** If patient assessment is Green, contact Fireline supervision for incident medical personnel to respond.
- IWI Commander has authority to request from Dillon Dispatch Life-Flight Helicopter and/or ALS Ambulance along with incident medical personnel.
- If patient assessment is Red, IWI Commander is encouraged to activate multiple transport options. IWI Commander will utilize appropriate option for patient transport to definitive care.
- For extraction forest aircraft, utilize Air to Ground Primary (**168.52500 RX/TX**). If using an air ambulance, use TAN (155.3400 RX/TX) to communicate with air ambulance.
- If incident should occur outside the Grouse Fire Incident, contact 911 and Dillon Dispatch on **VIPOND PARK frequency (Command) 173.08750 RX, 165.72500 TX, tone 103.5 on TX** for monitoring and support and to notify whether patient is incident personnel or civilian.
- Patients evaluated as Green notify nearest supervisor of the location of the incident and assigned EMT to determine treatment and transport.
- Upon notification of a serious accident, the following will report to nearest radio: Incident Commander and Operations Section Chief.
- Incident radio traffic on **VIPOND PARK frequency (Command) 173.08750 RX, 165.72500 TX, tone 103.5 on TX** will be monitored by the Dillon Interagency Dispatch Center.

Approved by: /s/ Caleb Olander, Incident Commander
Date: 07/31/2024

MEDICAL PLAN (ICS 206 WF)

Controlled Unclassified Information//Basic

Medical Incident Report

FOR A NON-EMERGENCY INCIDENT, WORK THROUGH CHAIN OF COMMAND TO REPORT AND TRANSPORT INJURED PERSONNEL AS NECESSARY.

FOR A MEDICAL EMERGENCY: IDENTIFY ON SCENE INCIDENT COMMANDER BY NAME AND POSITION AND ANNOUNCE "MEDICAL EMERGENCY" TO INITIATE RESPONSE FROM IMT COMMUNICATIONS/DISPATCH.

Use the following items to communicate situation to communications/dispatch.

1. CONTACT COMMUNICATIONS / DISPATCH (Verify correct frequency prior to starting report)

Ex: "Communications, Div. Alpha. Stand-by for Emergency Traffic."

2. INCIDENT STATUS: Provide incident summary (including number of patients) and command structure.

Ex: "Communications, I have a Red priority patient, unconscious, struck by a falling tree. Requesting air ambulance to Forest Road 1 at (Lat./Long.) This will be the Trout Meadow Medical, IC is TFLD Jones. EMT Smith is providing medical care."

Severity of Emergency / Transport Priority	<input type="checkbox"/> RED / PRIORITY 1 Life or limb threatening injury or illness. Evacuation need is IMMEDIATE <i>Ex: Unconscious, difficulty breathing, bleeding severely, 2° - 3° burns more than 4 palm sizes, heat stroke, disoriented.</i> <input type="checkbox"/> YELLOW / PRIORITY 2 Serious Injury or illness. Evacuation may be DELAYED if necessary. <i>Ex: Significant trauma, unable to walk, 2° - 3° burns not more than 1-3 palm sizes.</i> <input type="checkbox"/> GREEN / PRIORITY 3 Minor Injury or illness. Non-Emergency transport <i>Ex: Sprains, strains, minor heat-related illness.</i>	
Nature of Injury or Illness & Mechanism of Injury		Brief Summary of Injury or Illness <i>(Ex: Unconscious, Struck by Falling Tree)</i>
Transport Request		Air Ambulance / Short Haul/Hoist Ground Ambulance / Other
Patient Location		Descriptive Location & Lat. / Long. (WGS84)
Incident Name		Geographic Name + "Medical" <i>(Ex: Trout Meadow Medical)</i>
On-Scene Incident Commander		Name of on-scene IC of Incident within an Incident <i>(Ex: TFLD Jones)</i>
Patient Care		Name of Care Provider <i>(Ex: EMT Smith)</i>

3. INITIAL PATIENT ASSESSMENT: Complete this section for each patient as applicable (start with the most severe patient)

Patient Assessment: See IRPG page 106

Treatment:

4. TRANSPORT PLAN:

Evacuation Location (if different): *(Descriptive Location (drop point, intersection, etc.) or Lat. / Long.)* Patient's ETA to Evacuation Location:

Helispot / Extraction Site Size and Hazards:

5. ADDITIONAL RESOURCES / EQUIPMENT NEEDS:

Example: Paramedic/EMT, Crews, Immobilization Devices, AED, Oxygen, Trauma Bag, IV/Fluid(s), Splints, Rope rescue, Wheeled litter, HAZMAT, Extrication

6. COMMUNICATIONS: Identify State Air/Ground EMS Frequencies and Hospital Contacts as applicable

Function	Channel Name/Number	Receive (RX)	Tone/NAC *	Transmit (TX)	Tone/NAC *
COMMAND					
AIR-TO-GRND					
TACTICAL					

7. CONTINGENCY: Considerations: If primary options fail, what actions can be implemented in conjunction with primary evacuation method? Be thinking ahead.

8. ADDITIONAL INFORMATION: Updates/Changes, etc.

REMEMBER: Confirm ETA's of resources ordered. Act according to your level of training. Be Alert. Keep Calm. Think Clearly. Act Decisively.