

# Grouse Fire



**Sunday August 4th**  
**Day Operations 0600-2200**

\*\*\*Public Information Officer (PIO) Michelle Peterson 406-210-0070\*\*\*

P1R4SM24 (0102)

MT-BDF-246327



Check-in, Maps, Finance Email

<b>INCIDENT OBJECTIVES</b>		<b>1. Incident Name</b> <b>GROUSE FIRE</b>		<b>2. Date Prepared</b> <b>August 3, 2024</b>		<b>3. Time</b> <b>1900</b>	
<b>4. Operational Period: August 4, 2024 Day Operations 0600-2200</b>							
<p>Leaders Intent</p> <ul style="list-style-type: none"> <li>Risk management tools will be used to evaluate planned actions to provide an acceptable level of risk vs. reward between the risk to critical values and risk to responders.</li> </ul> <p>Incident Objectives</p> <ul style="list-style-type: none"> <li>Address the safety of firefighters, aviation and public through clear communication towards completion of objectives.</li> <li>Use a full suppression strategy with a combination of direct, indirect, and point zone protection tactics where reasonable to protect the identified critical values at risk.</li> <li>Develop contingency plans that identify locations and specific actions to be taken in the event the fire threatens or moves significantly towards the Pioneer Scenic By-way, Jerked Prairie, or Hwy 43.</li> <li>Coordinate with the Forest Archaeologist regarding cultural resources within the vicinity of the incident.</li> <li>Continue to ensure timely and accurate information is provided to the public including the DNRC, BLM, partners and stakeholders impacted by the fire regarding closure areas and other ongoing activities related to the Grouse Fire.</li> </ul>							
<b>8. Attachments (X if attached)</b>							
<input checked="" type="checkbox"/>	ICS 203	<input checked="" type="checkbox"/>	ICS 205 Incident Radio Comm Plan				Division Supply Order Form
<input checked="" type="checkbox"/>	Incident Weather Forecast		Fire Information Message				NR Chainsaw Parts Order Form
	Fire Behavior Forecast		Resource Advisor Message		<input checked="" type="checkbox"/>		Incident Map
<input checked="" type="checkbox"/>	Safety Message		Human Resource		<input checked="" type="checkbox"/>		ICS 206 Medical Plan
<input checked="" type="checkbox"/>	ICS 204 Division Assignment Lists	<input checked="" type="checkbox"/>	Training Message		<input checked="" type="checkbox"/>		ICS 214 Activity Log
<input checked="" type="checkbox"/>	ICS 220 Air Operations Summary	<input checked="" type="checkbox"/>	Finance Message		<input checked="" type="checkbox"/>		Medical Incident Report – 8 Line
<b>9. Prepared by SITL</b> Katie Bonogofsky (T)				<b>9. Approved by (Incident Commander)</b>			

ORGANIZATION ASSIGNMENT LIST		9. Operations Section	
1. Incident Name  <b>Grouse Fire MT-BDF-246327</b>		Line Ops Planning Ops	Greg Campbell Don Hammack
		<b>a. Branch I - Divisions/Groups</b>	
2. Date August 3, 2024	3. Time 2100	Branch Director	
4. Operational Period <b>August 4, 2024 Day Operations 0600—2200</b>		<b>Division A</b>	Brian Gorwitz Tyson Luicer (T)
<b>5. Incident Commander and Staff</b>		<b>Division M</b>	Jerod Russell Trevor Buchanan (T)
		<b>Division W</b>	Mike King Matt Delaney (T)
		<b>STRUCTURE</b>	Mike Gustafson Evan Burke (T)
Incident Commander	Richard Griffin Caleb Olander (T)	<b>STAGING</b>	
Deputy			
Safety Officer	Donald Garringer		
Information Officer	Michelle Peterson	<b>b. Branch II - Divisions/Groups</b>	
Incident Business Adv	Erin Lally	Branch Director	
<b>6. Agency Representatives</b>		Division/Group	
Agency	Name	Division/Group	
BDNF	Cameron Rasor; Zac Fisher (T)	Division/Group	
Resource Advisors	Ayme Swartz	<b>c. Branch III - Divisions/Groups</b>	
<b>7. Planning Section</b>			
Chief	Kurt Wetzstein		
Resources Unit			
SCKN	Ashley Dettmann (T)		
Situation Unit	Katie Bonogofsky (T)		
Situation Unit	Paul Smith		
Demobilization Unit	Russ Walker (T)	<b>c. Air Operations Branch</b>	
GISS	RIST	Air Operations	
IMET		Air Attack	
SOPL		FAO Acting	Nick Plovanic
FBAN		Helicopter Coord	
HRSP		Helibase Manager	
LTAN		Air Tanker Coord	
ITSS		<b>10. Finance Section</b>	
Air Quality		Chief	Arden Ward
<b>8. Logistics Section</b>		Personnel Time	Victoria Davis(T)
Planning Logistics	Lawrence Falcon; Randy Rector	Personnel Time	Ashley Johnson (T)
Field Logistics		Equipment Time	Tammy Carter (T)
Supply Unit		Comp/Claims Unit	
Ordering Manager		Cost Unit	
Ground Support			
Medical Unit	David Poxleitner		
Medical Unit	Alicia Tanrath (T)	Prepared by SITL (T)	
Communication Unit			
Security Unit	Kevin Arnold		
Facilities Unit			
Base Camp Manager			

### **Fire Weather Forecast:**

DISCUSSION...A shortwave trough will move through southwest Montana on Sunday, bringing increasing clouds, rain, and chances for thunderstorms in the afternoon (about 50 percent). Expect decreasing clouds overnight, with another round of thunderstorms possible on Monday (20 percent chance).

#### **.SUNDAY...**

- \* Sky/Weather.....Mostly cloudy. Chance of rain showers in the morning. Rain showers and chance of thunderstorms in the afternoon.
- \* CWR (> 0.10 Inch)...40 percent.
- \* Chance Lightning....50 percent.
- \* LAL.....3.
- \* Max Temperature.....67-72.
- \* Min Humidity.....39-44 percent.
- \* Wind (20 ft).....Northwest 5-7 mph shifting to the west 8-10 mph with gusts to 15 mph in the afternoon.
- \* Mixing Height.....2000 ft agl increasing to 5500 ft agl late in the morning.
- \* Mixing Winds.....West 10 mph.
- \* Haines Index.....3 very low.
- \* Precip Amount.....0.11 inches.

#### **.SUNDAY NIGHT...**

- \* Sky/Weather.....Mostly clear. Slight chance of showers and thunderstorms in the evening.
- \* CWR (> 0.10 Inch)...10 percent.
- \* Chance Lightning....20 percent.
- \* LAL.....2.
- \* Min Temperature.....49-54.
- \* Max Humidity.....73-78 percent.
- \* Wind (20 ft).....Northwest 7-9 mph shifting to the southwest around 6 mph overnight.
- \* Mixing Height.....2000 ft agl decreasing to less than 100 ft agl in the late evening and overnight.
- \* Mixing Winds.....West 10 mph.
- \* Precip Amount.....0.01 inches.

#### **.MONDAY...**

- \* Sky/Weather.....Partly cloudy. Chance of rain showers and slight chance of thunderstorms in the afternoon.
- \* CWR (> 0.10 Inch)...10 percent.
- \* Chance Lightning....20 percent.
- \* LAL.....2.
- \* Max Temperature.....71-76.
- \* Min Humidity.....21-26 percent.
- \* Wind (20 ft).....Southwest 6-12 mph.
- \* Mixing Height.....2500 ft agl increasing to 6500 ft agl late in the morning, then increasing to 9500 ft agl late in the afternoon decreasing to 6500 ft agl late in the afternoon.
- \* Mixing Winds.....West 10 mph.
- \* Haines Index.....4 low.
- \* Precip Amount.....0.03 inches.

## HEALTH AND SAFETY MESSAGE

*SAFETY* starts with *YOU*

We are ALL accountable for SAFE behaviors

INCIDENT: Grouse MT BDF 246327

DATE: 08/04/24

Operational Period: 0600-2200

### **Major Hazards and Risks: Inattentive Blindness**

You can see when your eyes are open, but are you noticing everything in your field of view?

We are getting into a routine, and it is easy to see what we expect, rather than what is actually there.

There are lots of distractions out there (radio noise, chainsaws, helicopters flying overhead, heavy equipment working) that make it hard to maintain our proactive focus.

### **Maintain awareness of your operational area**



### **Thunderstorm Safety**

- \*Take shelter in a vehicle or building if possible.
- \*Find a low spot away from tall trees, wire fences, utility lines and other elevated conductive objects. If in the woods move to an area with shorter trees.
- \*If in open country, crouch low, with feet together, minimizing contact with the ground. Use your pack to sit on but never lie on the ground.
- \*Don't group together, don't stay on ridge tops, in wide open areas.
- \*If you feel your skin tingle or your hair stand on end, make yourself the smallest possible target and minimize your contact with the ground.

Don Garringer, Safety Officer

### **IF YOU ARE ON THE LINE**

#### **KNOW HOW TO OPERATE IF THERE IS A MEDICAL EMERGENCY!**

- Where is the closest EMT or first responder?
- Do you know the correct frequencies?
- Who do you contact and with what information?
- Patient assessment?
- Where is the closest evacuation route to where you are working?
- Do you have a contingency plan?
- Ground transport or air?
- Are you thinking ahead?
- Acting according to your level of training?
- Refer to IRPG page 105-119 Emergency Medical Care Guidelines, Pink Pages.

ASSIGNMENT LIST				1.Branch		2. Division/Group		DIVISION A	
3. Incident Name			Grouse Creek Fire			4. Operational Period: Date: August 4, 2024 Time: 0600-2200			
5. Operations Personnel									
Line Operations		Greg Campbell			Division Supervisor		Brian Gorwitz		
Planning Operations		Don Hammack					Tyson Luicer (T)		
Air Operations					Safety		Donald Garringer		
6. Resources Assigned This Period									
Strike Team/Task Force/ Resource Designator		Last Shift	Leader	No. Pers.		Trans. Needs	Drop Off PT./Time	Pick Up PT./Time	
CRW1 Bonneville IHC		8/14	Evans	22		N	0600/ICP	2200	
CRW1 Flathead IHC		8/15	Borgen	25		N	0600/ICP	2200	
CRW2 NY1		8/5	Prackajlo	20		N	0600/ICP	2200	
CRW2 West Coast Reforestation		8/14	Martinez	20		N	0600/ICP	2200	
ENG6 CNF-612		8/7	Lehmen	6		N	0600/ICP	2200	
ENG6 Butte fire w/UTV		8/12	Mjelde	2		N	0600/ICP	2200	
ENG6 C&C Cougar Fire Co.		8/14	Reilly	3		N	0600/ICP	2200	
ENG6 Castle Mountain		8/15	Welch	3		N	0600/ICP	2200	
ENG6 Bakken		8/16	Bakken	3		N	0600/ICP	2200	
7. Control Operations									
Task – Prep for firing operations from Pettengill Creek along 186 RD and north along HY 73.									
Purpose – Conduct firing operations as needed to keep fire west of 73 and north of Pettengill Creek.									
End State – Fire stays to the west and north of Pettengill.									
8. Special Instructions: Swing shift operational period will be 1000 to 0200.									
-Utilize UAS PSD to minimize fire severity during firing operation.									
-AMBO staged at DP-40, available to whole incident.									
-Butte Fire in Alpha has 1 paramedic and 1 EMT.									
9. Division/Group Communication Summary									
Function	Frequency - RX	Frequency - TX	TX Tone	RX Tone	Chann	Comments			
Dillon Dispatch	173.08750	165.72500	103.5		1	Tone guard number 8 (103.5).			
R1 SOA RPT	173.1875	164.38750	136.5	136.5	2				
TACTICAL	168.05000	168.05000	156.7		3				
MUTUAL AID	154.07000	154.07000	156.7		6				
A/G PRIMARY	168.52500	168.52500			9				
A/G SECONDARY	169.81250	169.81250			10				
MEDICAL A/G	155.34000	155.34000	156.7		11				
Air Guard	168.62500	168.62500	110.9		12				
Ground Medical	155.280	155.280	156.7		13				
Prepared by SITL Katie Bonogofsky (T)			Approved by (IC)						

ASSIGNMENT LIST		1.Branch		2. Division/Group		DIVISION M	
3. Incident Name		Grouse Creek Fire		4. Operational Period:6 Date: August 4, 2024 Time: 0600-2200			
5. Operations Personnel							
Line Operations		Greg Campbell		Division Supervisor		Jerod Russell;	
Planning Operations		Don Hammack				Trevor Buchanon (T)	
Air Operations				Safety		Donald Garringer	
6. Resources Assigned This Period							
Strike Team/Task Force/ Resource Designator	Last Shift	Leader	No. Pers.		Trans. Needs	Drop Off PT./Time	Pick Up PT./Time
7. Control Operations							
Task – Scout line from Division Alpha/Mike break to Harriett Lou Creek.							
Purpose – To identify control features to lessen the fires impact to the scenic byway.							
End State – Fire stays west of scenic byway.							
8. Special Instructions:							
-AMBO staged at DP-40, available to whole incident. -Butte Fire in Alpha has 1 paramedic and 1 EMT.							
9. Division/Group Communication Summary							
Function	Frequency - RX	Frequency - TX	TX Tone	RX Tone	Chann	Comments	
Dillon Dispatch	173.08750	165.72500	103.5		1	Tone guard number 8 (103.5).	
R1 SOA RPT	173.1875	164.38750	136.5	136.5	2		
TACTICAL	168.05000	168.05000	156.7		4		
MUTUAL AID	154.07000	154.07000	156.7		6		
A/G PRIMARY	168.52500	168.52500			9		
A/G SECONDARY	169.81250	169.81250			10		
MEDICAL A/G	155.34000	155.34000	156.7		11		
Air Guard	168.62500	168.62500	110.9		12		
Ground Medical	155.280	155.280	156.7		13		
Prepared by SITL Katie Bonogofsky (T)		Approved by (IC)			Date 8/3/24		

ASSIGNMENT LIST		1.Branch		2. Division/Group		DIVISION W	
3. Incident Name		Grouse Creek Fire		4. Operational Period:6 Date: August 4, 2024 Time: 0600-2200			
5. Operations Personnel							
Line Operations		Greg Campbell		Division Supervisor		Mike King;	
Planning Operations		Don Hammack				Matt Delaney (T)	
Air Operations				Safety		Donald Garringer	
6. Resources Assigned This Period							
Strike Team/Task Force/ Resource Designator		Last Shift	Leader	No. Pers.	Trans. Needs	Drop Off PT./Time	Pick Up PT./Time
7. Control Operations							
Task – Scout line south of Division Alpha/Whiskey break along Pettengill Creek to Reservoir Creek.							
Purpose – Look for opportunities to engage the fire as it approaches Pettengill Creek.							
End State – To keep fire north of Pettengill Creek.							
8. Special Instructions:							
-AMBO staged at DP-40, available to whole incident.							
-Butte Fire in Alpha has 1 paramedic and 1 EMT.							
9. Division/Group Communication Summary							
Function	Frequency - RX	Frequency - TX	TX Tone	RX Tone	Chann	Comments	
Dillon Dispatch	173.08750	165.72500	103.5		1	Tone guard number 8 (103.5).	
R1 SOA RPT	173.1875	164.38750	136.5	136.5	2		
TACTICAL	168.05000	168.05000	156.7		4		
MUTUAL AID	154.07000	154.07000	156.7		6		
A/G PRIMARY	168.52500	168.52500			9		
A/G SECONDARY	169.81250	169.81250			10		
MEDICAL A/G	155.34000	155.34000	156.7		11		
Air Guard	168.62500	168.62500	110.9		12		
Ground Medical	155.280	155.280	156.7		13		
Prepared by SITL Katie Bonogofsky (T)			Approved by (IC)			Date 8/3/24	Time 1900



ASSIGNMENT LIST		1.Branch		2. Division/Group		STRUCTURE	
3. Incident Name		Grouse Creek Fire		4. Operational Period:		Date: August 4, 2024 Time: 0600-2200	
5. Operations Personnel							
Line Operations	Greg Campbell		Division Supervisor		Mike Gustafson;		
Planning Operations	Don Hammack				Evan Burke (T);		
Air Operations			Safety		Donald Garringer		
6. Resources Assigned This Period							
Strike Team/Task Force/ Resource Designator	Last Shift	Leader	No. Pers.		Trans. Needs	Drop Off PT./Time	Pick Up PT./Time
CRW2 Lava	8/14	Trujillo	20		N	0600/ICP	2200
ENG6 Greywolf	8/13	Grant	3		N	0600/ICP	2200
ENG6 Whitegrass Fire	8/16	Whitegrass	3		N	0600/ICP	2200
Water tender-Blacktail	8/10	Smith	1		N	0600/ICP	2200
7. Control Operations							
Task – Secure structures on 186 road and continue to monitor for hot spots.							
Purpose – Protect structures and stop fire impact to structures in Pettengill.							
End State – Private property and structures protected.							
8. Special Instructions: Swing shift operational period will run 1000 to 0200.							
-AMBO staged at DP-40, available to whole incident.							
-Butte Fire in Alpha has 1 paramedic and 1 EMT.							
9. Division/Group Communication Summary							
Function	Frequency - RX	Frequency - TX	TX Tone	RX Tone	Chann	Comments	
Dillon Dispatch	173.08750	165.72500	103.5		1	Tone guard number 8 (103.5).	
R1 SOA RPT	173.1875	164.38750	103.5	136.5	2		
TACTICAL	168.20000	168.20000	156.7		4		
MUTUAL AID	154.07000	154.07000	156.7		6		
A/G PRIMARY	168.52500	168.52500			9		
A/G SECONDAR	169.81250	169.81250			10		
MEDICAL A/G	155.34000	155.34000			11		
Air Guard	168.62500	168.62500	110.9	110.9	12		
Ground Medical	155.280	155.280	156.7		13		
Prepared by SITL Katie Bonogofsky (T)		Approved by (IC)			Date 8/3/24		

ASSIGNMENT LIST		1.Branch		2. Division/Group		STAGING	
3. Incident Name		Grouse Creek Fire		4. Operational Period:6 Date: August 4, 2024 Time: 0600-2200			
5. Operations Personnel							
Line Operations	Greg Campbell		Division Supervisor				
Planning Operations	Don Hammack						
Air Operations			Safety		Donald Garringer		
6. Resources Assigned This Period							
Strike Team/Task Force/ Resource Designator	Last Shift	Leader	No. Pers.		Trans. Needs	Drop Off PT./Time	Pick Up PT./Time
SKG1-Bigfoot	8/11	Spencer	2		N	0600/ICP	2200
SKG1-RT Logging LLC	8/16	Thompson	2		N	0600/ICP	2200
Falling Mod	8/16	Clifford	2		N	0600/ICP	2200
Dozer-CC Stacking	8/16	Cornell	2		N	0600/ICP	2200
EMPF	8/18	Becca Wallace	1		N	0600/ICP	2200
EMPF	8/18	John Baker	1		N	0600/ICP	2200
7. Control Operations							
Task – Be available to all divisions upon requests.							
Purpose – To support all divisions.							
End State – All divisions are supported.							
8. Special Instructions: Report to Planning Ops for morning in-briefing.							
-AMBO staged at DP-40, available to whole incident.							
-Butte Fire in Alpha has 1 paramedic and 1 EMT.							
9. Division/Group Communication Summary							
Function	Frequency - RX	Frequency - TX	TX Tone	RX Tone	Chann	Comments	
Dillon Dispatch	173.08750	165.72500	103.5		1	Tone guard number 8 (103.5).	
R1 SOA RPT	173.1875	164.38750	136.5	136.5	2		
TACTICAL	168.05000	168.05000	156.7		3		
MUTUAL AID	154.07000	154.07000	156.7		6		
A/G PRIMARY	168.52500	168.52500			9		
A/G SECONDARY	169.81250	169.81250			10		
MEDICAL A/G	155.34000	155.34000	156.7		11		
Air Guard	168.62500	168.62500	110.9		12		
Ground Medical	155.280	155.280	156.7		13		
Prepared by SITL Katie Bonogofsky (T)		Approved by (IC)			Date 8/3/24		

AIR OPERATIONS SUMMARY			Prepared By: Nick Plovanic	Prepared Date: 8/4/2024	Prepared Time: 8:00	
1. INCIDENT NAME: B-D IA/Support/grouse fire		2. Operational Date: August 4, 2024		3. Butte Sunset: 20:55		
				Butte Pumpkin: 21:25		
4. Remarks Safety Notes, Hazards, Air ops Mission plan for density altitude (DA) and windy conditions Report any unauthorized/UAS activity Wash bucket, if moving between dipsites over Contentinal Divide. Offer constructive feedback to pilots during tactical operations Status current at time of report. Changes occur constantly.			5. Medevac Aircraft: Order through dispatch Life Flight ALS 800-232-0911 7HX Litter			
6. TFRs: 4/9355 Grouse Fire						
7. Personnel:			8. Frequencies:			
		Phone #	AM	FM	9. Fixed-Wing GACC:	
B-D FAO	Bert Smith	406-660-7371	Nat. Flight Follow	168.6500 Rx/Tx Tn 110.9	Air Tankers/SEATS: Order through dispatch	
Acting FAO	Nick Plovanic	406-366-0179	Air Guard	168.6250 Rx/Tx Tn 110.9		
Dillon Dispatch	Aircraft Desk	406-683-3939			Lead Plane/ASM: Order through dispatch	
N205GE	Rich Reneau	406-493-5799	IA A/G 29	166.9000		
N27HX	Jeremy Neal	505-709-7091	IA A/G 26	166.6875		
			IA A/A Primary	119.6250	Air Attack: Order through dispatch	
N721HT	Cory Dutton	530-306-4589	IA A/A Secondary	134.1500		
N172AC	Jerrid Silva	406-381-5963	Medical TAN	155.340 Tx Tn 156.7	Helicopters GACC: Order through dispatch	
			Medical WHITE	155.280 Tx Tn 156.7	T1 Avail. GACC Lend/Lease	
UR31	Shannon Courtney	865-430-4753	DNRC A/G Yellow	151.2200	T2 Avail. GACC Lend/Lease	
UR32	Aaron Farmer	505-206-9113	DNRC A/G Orange	151.4000	T3 Avail. GACC Lend/Lease	
			Grouse A/A	124.6000		
			Grouse A/G Primary	168.5250		
			Grouse A/G Secondary	169.8125	SMJK GACC: Order through dispatch	
HELICOPTERS/UAS						
FAA N#	Call Sign	Make/Model	Type	Base	Available	Remarks
N205GE	5GE	UH-1H	2	KBTM	830	Restricted /Forest IA
N27HX	7HX	Bell 407	3	KBTM	830	Standard/ Forest IA
N721HT	1HT	Sky Crane	1	KBTM	830	Restricted/ Grouse fire
N172AC	2AC	Sky Crane	1	KBTM	830	Restricted/ Grouse fire
UR31	UR31		3	Grouse fire	600	
UR32	UR32		3	Grouse fire	600	
Notes/Remarks						
Flight follow through appropriate dispatch until contact has been made on the incident. Then flight follow local.						
Cost Summarys bertram.smith@usda.gov						

# ICS 205 - INCIDENT RADIO COMMUNICATIONS PLAN

CONTROLLED UNCLASSIFIED  
INFORMATION/BASIC

<b>1. Incident Name:</b>  GROUSE Incident Channels			<b>2. Date/Time Prepared</b>  Date: 8/3/24 Time: 1900			<b>3. Operational Period:</b> Date From: 08/4/24 Date To: 08/4/24 Time From: 0600 Time To: 2200			
<b>4. Communications</b>									
Ch#	Function	Name	Assigned To	Rx Freq	Rx Tone	Tx Freq	Tx Tone	Mode	Notes
1	DILLON DISPATCH	VIPOND PARK	All Divisions	173.08750		165.72500	103.5	A	Tone guard number 8 (103.5).
2	TACTICAL RPT	R1 SOA RPT	All Divisions	173.1875	136.5	164.38750	136.5	A	
3	TACTICAL	TAC 1	DIV A	168.05000		168.05000	156.7	A	
4	TACTICAL	TAC 2	DIV M/W	168.20000		168.20000	156.7	A	
5	TACTICAL	TAC 3	STRUCTURE GROUP	168.60000		168.6000	156.7	A	
6	MUTUAL AID	RED	All Divisions	154.07000		154.07000	156.7	A	
7	MUTUAL AID	MAROON	UNASSIGNED	154.28000		154.28000	156.7	A	
8	MUTUAL AID	GOLD	UNASSIGNED	153.90500		153.90500	156.7	A	
9	A/G PRIMARY	A/G 1	All Divisions	168.52500		168.52500		A	
10	A/G SECONDARY	A/G 2	All Divisions	169.81250		169.81250		A	
11	LIFEFLIGHT A/G	TAN	All Divisions	155.34000		155.34000	156.7	A	
12	Air Guard	Air Guard	All Divisions	168.62500	110.9	168.62500	110.9	A	
13	Ground Medical	White	All Divisions	155.280		155.280	156.7	A	
15									
16									
17									
18									
19									
20									
<b>5. Special Instructions</b>									
<b>6. Prepared by:</b> Katie Bonogofsky SITL (T)						Signature:			
ICS 205 - CONTROLLED UNCLASSIFIED INFORMATION/BASIC						Date/Time: -			

MMS  
IAP

**Grouse Fire**  
**Finance Hotline: 575-342-2044**

Please make sure to check-in upon arriving on incident

IMPORTANT INFORMATION: Grouse Finance is a mix of on-site and virtual staff available to support you and your finance needs. We have established a Finance Hotline to assist you throughout your assignment. Submit your CTRs and Shift tickets electronically. If you have any questions regarding the electronic processes, please reach out to us via the Finance Hotline.

Please submit your Shift Ticket / CTR to [2024.grouse.finance@firenet.gov](mailto:2024.grouse.finance@firenet.gov) using the following format-Email Subject Line: Use the "TIME/Resource Order No./ Resource Name/Position Code" format in the subject line with your information.

(Example: **TIME/O-200/SBear/Safety**)

Email all documents that pertain to your assignment:

<b>Agency Overhead</b>	<b>Agency ADs / EFFs</b>	<b>VIPR Resources</b>	<b>Contract / Agency Crews</b>	<b>Cooperators</b>
Resource Order Crew Time Reports (CTRs)	Resource Order Casual Hire Form CTRs	Resource Order VIPR Agreement Schedule of Items Inspections Shift Tickets	Resource Order Manifest Agreement / Contract Schedule of Items Inspections CTRs	Resource Order Agreement Shift Tickets / CTRs

Please submit Equipment Shift Tickets or Crew Time Reports (CTRs) every other day, at a minimum.

Please **include your email address and phone number** in the body of the email when sending your documents, so that we can easily contact you if there are questions.

**COMP/CLAIMS** - please fill out GM, and OF 289 with signatures, and send into finance as soon as the request is needed. There is a possibility that the request will NOT be approved, but get the forms in ASAP, to properly generate S#'s.

**FOR RESOURCES DEMOBING:**

- Complete and email your final CTR/Shift Ticket as soon as you know your travel time. This form will need to be signed by your supervisor.
- Call the Finance Hotline to verify Finance has everything needed. This step will clear you from Finance to start traveling home. It is still necessary to complete demob with the other functions.
- You will receive your final OF-288 or OF-286 within 48 hours, with instructions if applicable.

**DEMOB LIST**

O-x Name Date Time

# **GROUSE FIRE DEMOB LIST:**

## **LWD-8/3 Demob-8/4**

E-40 NMGNF-642

## **LWD-8/4 Demob 8/5**

O-14 Poxleitner, David

C-5 NYS #1

## **LWD-8/5 Demob 8/6**

O-23 FACL Randy Rector

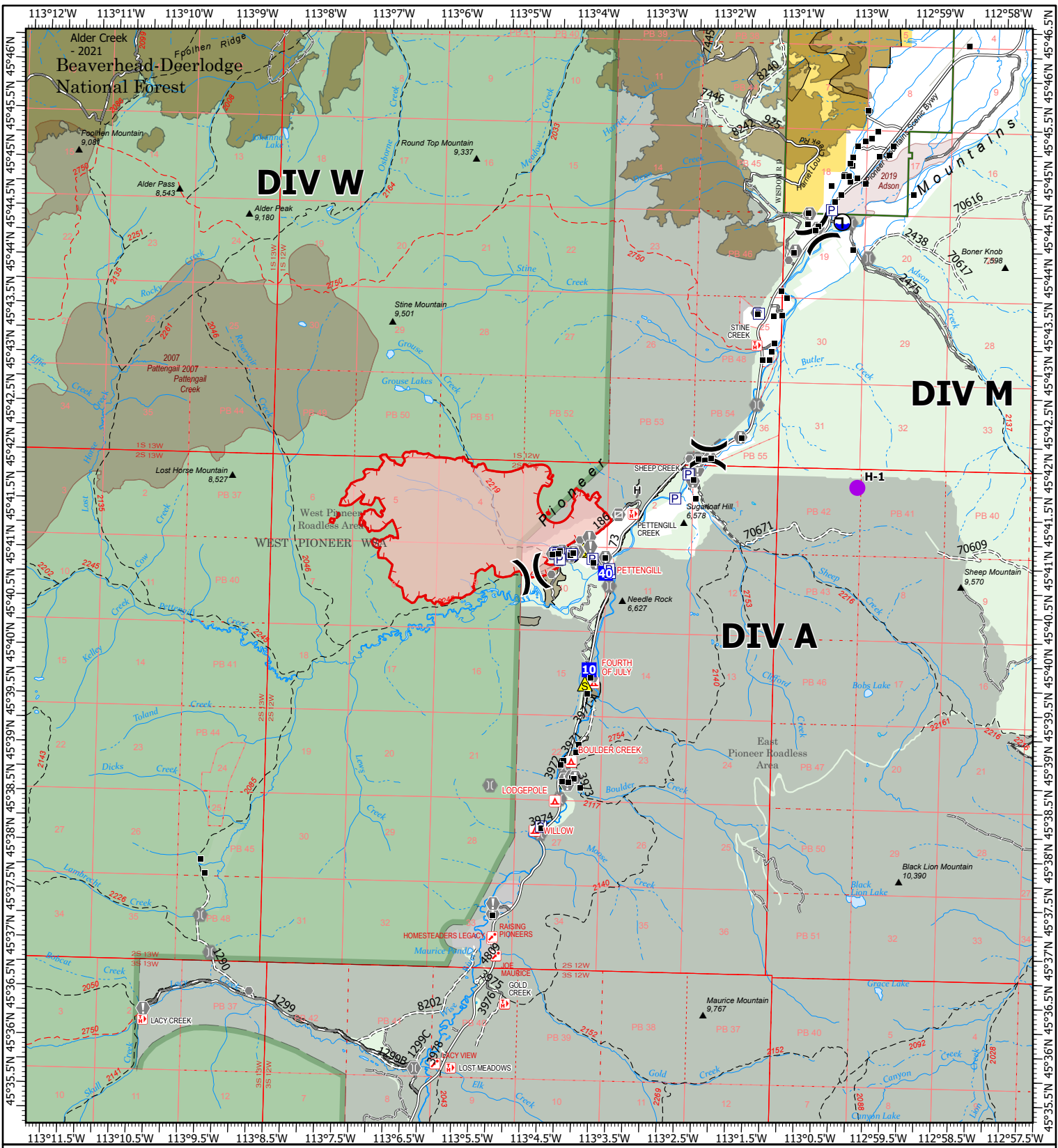
- See Planning tent for checkout sheet.
- Call Finance at 575-342-2044 at scheduled time.
- Get all CTRs or Shift Tickets in early. Contract resources make sure you have an evaluation.
- Grouse Fire Demob email: [2024.grouse.demob@firenet.gov](mailto:2024.grouse.demob@firenet.gov)

## **Other Important Info:**

- **WEED WASH!!!** Located at 64800 MT-43, Wise River.
  - Weed Wash hours 0700-1900, **required for Demob**
- **Shower Hours: 0500-1200 & 1400-2200**

---

**Logistics: Replacement parts order form (saw parts, plumbing, etc)  
available from the Logistics tent**



# IAP

## Grouse

MT-BDF-246327

08/04/2024 Day

2,097 acres at 08/03/2024 @ 1240 MDT

0 0.250.5 1 1.5 2

Miles

1:100,000 | RIST 2024 | 8/3/2024 1828

IAA Flight

North American 1983 Datum, Lat/Long Grid



Wildfire Daily Fire Perimeter	Other	Road, high clearance
Uncontained	Gate	FS Closed Road
Structure	Bridge	Infrastructure Bridge EDW Deck Type
Completed Hand Line	Culvert	USFS Roadless Areas
Access Route	Safety Zone	FS Wilderness Study Area Boundary
Other	Draft Site	Forest Service Land
Helispot	Road	Bureau of Land Management Lands
Division Break	Road, Dirt/Gravel	Interagency Fire Perimeter History Since 2004
Drop Point	Road, Paved	Interagency Fuels Treatments
Value at Risk	Road, Dirt/Gravel	Alder Creek 2021



**READ MESSAGE:**

In 1924, Wise River changed forever when the MT Power Company dam at Pettingail burst and sent an early morning flood racing down the Wise and Big Hole rivers. The torrent destroyed the town of Wise River, and damaged bridges and train tracks from Pettingill to Divide. Thanks to two men, Benny Osborne and Chris Norton, who raced ahead of the water to wake and warn residents, only four people died.



MEMORABLE MONTANANS- George Pettengill, "The Wild Man of Wise River". Few were as colorful as the legendary George Pettengill. With a tall, slender frame, piercing dark eyes, a rugged, weather-beaten face framed by long, reddish hair and beard, George wandered through the woods and along the creek that now bears his name. Reportedly a fugitive from a love gone sour, he came here to be alone, asked little of others and lived off the land, sometimes in dugouts and caves. He had few friends, perhaps the best of whom were horses he fed by hand. Despite his gentle voice and eloquent speech, some people were frightened of this mysterious man. One of his few friends was a local professor named Knaube, they both shared a love of geology. George roamed the Big Hole area for forty years.

Photo: George Pettengill (right) with his friend, Professor Knaube. Photo Courtesy of the Edwards family and The Montana Standard.



Ayme Swartz:

406-560-5250

Ayme.swartz@usda.gov





# Grouse Fire

## Incident Within an Incident: Emergency Action Plan

LEADERS INTENT - To provide efficient patient care and facilitate rapid transport to definitive care. In the case of a serious accident requiring patient transport to a medical facility:

- The IWI commander will be established at the incident scene.
- The closest ranking Operations Leader will proceed to the IWI site and assist if necessary.
- Use the 8-line protocol to assess patient; if patient evaluation is either Red or Yellow, use **VIPOND PARK frequency (Command) 173.08750 RX, 165.72500 TX, tone 103.5 on TX** to **contact Dillon Dispatch to initiate medical IWI**. If patient assessment is Green, contact Fireline supervision for incident medical personnel to respond.
- IWI Commander has authority to request from Dillon Dispatch Life-Flight Helicopter and/or ALS Ambulance along with incident medical personnel.
- If patient assessment is Red, IWI Commander is encouraged to activate multiple transport options. IWI Commander will utilize appropriate option for patient transport to definitive care.
- For extraction forest aircraft, utilize Air to Ground Primary (**168.52500 RX/TX**). If using an air ambulance, use TAN (155.3400 RX/TX) to communicate with air ambulance.
- If incident should occur outside the Grouse Fire Incident, contact 911 and Dillon Dispatch on **VIPOND PARK frequency (Command) 173.08750 RX, 165.72500 TX, tone 103.5 on TX** for monitoring and support and to notify whether patient is incident personnel or civilian.
- Patients evaluated as Green notify nearest supervisor of the location of the incident and assigned EMT to determine treatment and transport.
- Upon notification of a serious accident, the following will report to nearest radio: Incident Commander and Operations Section Chief.
- Incident radio traffic on **VIPOND PARK frequency (Command) 173.08750 RX, 165.72500 TX, tone 103.5 on TX** will be monitored by the Dillon Interagency Dispatch Center.

Approved by: /s/ Caleb Olander, Incident Commander (T)  
Date: 07/31/2024

# MEDICAL PLAN (ICS 206)

<b>MEDICAL PLAN</b> ICS 206	1. INCIDENT NAME  <p style="text-align: center;">Grouse</p>	2. DATE PREPARED  <p style="text-align: center;">8/3/2024</p>	3. TIME PREPARED  <p style="text-align: center;">1600</p>	4. OPERATIONAL PERIOD  <p style="text-align: center;">8/4/2024 0600-0600</p>		
<b>5. INCIDENT MEDICAL AID STATIONS</b>						
MEDICAL AID STATIONS	LOCATION	PARAMEDICS				
		YES	NO			
*ICP Medical Unit	*Wise River Airport Base camp (not fully staffed)	*X				
<b>6. TRANSPORTATION</b>						
<b>A. AIR AMBULANCES</b>						
NAME	LOCATION	PHONE	PARAMEDICS			
			YES	NO		
Helpflight	Billings, MT	406-346-2715	X			
Helena Short Haul	Helena, MT	Air Ops		X		
Lifeflight Network	Butte, MT	Dillon Dispatch	X			
<b>B. GROUND AMBULANCES</b>						
NAME	LOCATION	PARAMEDICS				
		YES	NO			
A1 Ambulance Service	Butte, MT	X				
Anaconda Ambulance	Anaconda, MT	X				
Fireline Medics Ambulance	DP-40	X				
<b>7. HOSPITALS</b>						
NAME	ADDRESS	TRAVEL TIME		PHONE	HELIPAD	
		AIR	GROUND		YES	NO
St. James Healthcare	400 S. Clark Butte, MT	10min	50min	406-723-2585	X	
St. Patrick Hospital	500 W. Broadway St. Missoula, MT	40min	2.5hr	406-748-3600	X	
Community Hosp of Anaconda	401 W. Pennsylvania St. Anaconda MT	10	90 min	406-563-8500	X	
St. Vincent Regional	1233 N 30th St, Billings, MT	60 min	4 hr 15	406-657-7000	X	
<b>8. MEDICAL EMERGENCY PROCEDURES</b>						
<p style="text-align: center;"><b><u>LINE "MEDICAL-EMERGENCY" PLAN:</u></b></p> <p><b>Reporting Party</b> to contact Dillon Dispatch on Vipond with:</p> <ul style="list-style-type: none"> <li>* Patient Complaint, Condition and Location via Tactical or Command Frequency.</li> <li>*<b>Red, Yellow &amp; Green</b> Patients Trigger Incident Within Incident (<b>IWI</b>) *Refer to IWI plan in this IAP.*</li> <li>* The highest qualified responder will run "<b>Medical-Emergency</b>" on the assigned frequency assuming the role of IWI IC.</li> <li>*IWI IC will use "<b>Medical Incident Report</b>" worksheet in the IAP or IRPG.</li> <li>* Dispatch contacts Medical Unit Leader on the assigned frequency or cell phone.</li> </ul>				<p style="text-align: center;"><b><u>Medical Unit Contacts:</u></b></p> <p>Dave Poxleitner: MEDL                      406-420-3744*temp</p> <p>Alicia Tanrath: MEDL (t)                      406-493-7043</p> <p style="text-align: center;"><b><u>IN CAMP</u></b></p> <p>MEDL first, then FM Ambo", or "Butte Fire", nights</p> <p>*Contact MEDL as soon as possible. Can escalate to Dispatch or 911 if needed or urgent.</p>		
<b>ICS 206 WF</b>	9. PREPARED BY: (Medical Unit Leader) MEDL		10. REVIEWED BY: (Safety Officer)			
	Dave Poxleitner		Don Garringer			

# MEDICAL PLAN (ICS 206 WF)

1. INCIDENT/PROJECT NAME									
Grouse					Date/Time: 8/4/2024 0600-0600				
3. AMBULANCE SERVICES									
NAME	COMPLETE ADDRESS	PHONE	PARAMEDICS						
			YES	NO					
A1 Ambulance	507 Centennial Ave, Butte, MT	406-490-3130	X						
Jefferson Valley EMS	203 W. Legion Ave, Whitehall, MT	406-346-2715	X						
4. AIR AMBULANCE SERVICES									
NAME	PHONE	TYPE OF AIRCRAFT/CAPABILITY							
Helpflight- Billings, MT	406-238-6215	EC-145							
Helena Short Haul	Dillon Dispatch	Bell 407							
Lifeflight Network	800-232-0911	Augusta 119 Koala							
NAME AND COMPLETE ADDRESS	GPS DATUM-WGS 84 COORDINATE STANDARD		TRAVEL TIME		PHONE	HELIPAD		FACILITY LEVEL OF CARE	
	AIR	GROUND	YES	NO					
St. James Healthcare 400 S.Clark St., Butte,MT	LAT: N 46-00.542500	10min	50min	406-723-2585	X		Level 3		
	LONG: W 112-32.6623								
	VHF:								
St. Patrick Hospital 500 W.Broadway St, Missoula	LAT: N 46-52.527333	40min	2.5hr	406-748-3600	X		Level 2		
	LONG: W 113-59.9865								
	VHF:								
Community Hosp of Anaconda 401 W. Pennsylvania St., Ana.	LAT: N 46-7.93	10	90 min	406-563-8500	X		Critical Access		
	LONG: W 112-57.43								
	VHF:								
St. Vincent Regional 1027 N. 27th St., Billings,MT	LAT: N 45-47.626667	60 min	3 hrs 20 mins	406-657-7000	X		Level 1		
	LONG: W 108-31.1150								
	VHF:								
6. DIVISION/BRANCH/GROUP			AREA/LOCATION/CAPABILITY						
<b>Alpha</b>			EMS Responders & Capability:			EMPF Luer+EMTF Hardesty=Fireline Medics EMPF Perry+EMTF Mjelde= Butte Fire			
			Equipment Available on Scene:			ALS & BLS Trauma gear, O2, Stokes, UTV			
			Medical Emergency Channel			Command/Vipond Park Rptr			
			ETA for Ambulance to Scene:						
			Air:						
			Ground:						
			Approved Helispot:						
			Lat:						
			Long:						
			<b>Structure</b>			EMS Responders & Capability:			EMPF Luer + EMTF Hardesty=Fireline Medics EMPF Perry + EMTF Mjelde=Butte Fire
Equipment Available on Scene:						ALS and BLS Trauma gear, UTV			
Medical Emergency Channel						Command/Vipond Park Rptr			
ETA for Ambulance to Scene:									
Air:									
Ground:									
Approved Helispot:						Wise River RD			
Lat:						N 45. 47.467			
Long:						W 112. 56. 384			
Approved Helispot:									
Lat:									
Long:									
8. PREPARED BY (MEDICAL UNIT LEADER)				9. DATE TIME	10. REVIEWED BY (SAFETY OFFICER)			11. DATE TIME	
Dave Poxleitner				8/3 1800	Don Garringer			8/3 1800	

# MEDICAL PLAN (ICS 206 WF)

6. DIVISION/BRANCH/GROUP	AREA/LOCATION/CAPABILITY		
<b>Mike</b>	EMS Responders & Capability:	(Unstaffed)	
	Equipment Available on Scene:		
	Medical Emergency Channel		
	ETA for Ambulance to Scene:		
	Air:		
	Ground:		
	Approved Helispot:		
	Lat:		
	Long:		
<b>Swing/Night</b>	EMS Responders & Capability:	(Crew EMTs are available)	
	Equipment Available on Scene:	Butte Fire EMPF+EMTF w/ UTV	
	Medical Emergency Channel		
	ETA for Ambulance to Scene:		
	Air:		
	Ground:		
	Approved Helispot:		
	Lat:		
	Long:		
<b>Whiskey</b>	EMS Responders & Capability:	(Unstaffed)	
	Equipment Available on Scene:		
	Medical Emergency Channel		
	ETA for Ambulance to Scene:		
	Air:		
	Ground:		
	Approved Helispot:		
	Lat:		
	Long:		
<b>Staging</b>	EMS Responders & Capability:	EMPF John Baker, EMPF Becca Wallace	
	Equipment Available on Scene:		
	Medical Emergency Channel		
	ETA for Ambulance to Scene:		
	Air:		
	Ground:		
	Approved Helispot:		
	Lat:		
	Long:		
8. PREPARED BY (MEDICAL UNIT LEADER)	9. DATE TIME	10. REVIEWED BY (SAFETY OFFICER)	11. DATE TIME
Dave Poxleitner	8/3 1800	Don Garringer	8/3 1800

# MEDICAL PLAN (ICS 206 WF)

Controlled Unclassified Information//Basic

## Medical Incident Report

**FOR A NON-EMERGENCY INCIDENT, WORK THROUGH CHAIN OF COMMAND TO REPORT AND TRANSPORT INJURED PERSONNEL AS NECESSARY.**

**FOR A MEDICAL EMERGENCY: IDENTIFY ON SCENE INCIDENT COMMANDER BY NAME AND POSITION AND ANNOUNCE "MEDICAL EMERGENCY" TO INITIATE RESPONSE FROM IMT COMMUNICATIONS/DISPATCH.**

Use the following items to communicate situation to communications/dispatch.

1. CONTACT COMMUNICATIONS / DISPATCH (**Verify correct frequency prior to starting report**)

*Ex: "Communications, Div. Alpha. Stand-by for Emergency Traffic."*

2. INCIDENT STATUS: *Provide incident summary (including number of patients) and command structure.*

*Ex: "Communications, I have a Red priority patient, unconscious, struck by a falling tree. Requesting air ambulance to Forest Road 1 at (Lat./Long.) This will be the Trout Meadow Medical, IC is TFLD Jones. EMT Smith is providing medical care."*

Severity of Emergency / Transport Priority	<input type="checkbox"/> RED / PRIORITY 1 Life or limb threatening injury or illness. Evacuation need is IMMEDIATE <i>Ex: Unconscious, difficulty breathing, bleeding severely, 2° – 3° burns more than 4 palm sizes, heat stroke, disoriented.</i> <input type="checkbox"/> YELLOW / PRIORITY 2 Serious Injury or illness. Evacuation may be DELAYED if necessary. <i>Ex: Significant trauma, unable to walk, 2° – 3° burns not more than 1-3 palm sizes.</i> <input type="checkbox"/> GREEN / PRIORITY 3 Minor Injury or illness. Non-Emergency transport <i>Ex: Sprains, strains, minor heat-related illness.</i>	
Nature of Injury or Illness & Mechanism of Injury		<i>Brief Summary of Injury or Illness (Ex: Unconscious, Struck by Falling Tree)</i>
Transport Request		<i>Air Ambulance / Short Haul/Hoist Ground Ambulance / Other</i>
Patient Location		<i>Descriptive Location &amp; Lat. / Long. (WGS84)</i>
Incident Name		<i>Geographic Name + "Medical" (Ex: Trout Meadow Medical)</i>
On-Scene Incident Commander		<i>Name of on-scene IC of Incident within an Incident (Ex: TFLD Jones)</i>
Patient Care		<i>Name of Care Provider (Ex: EMT Smith)</i>

3. INITIAL PATIENT ASSESSMENT: *Complete this section for each patient as applicable (start with the most severe patient)*

Patient Assessment: See IRPG page 106

Treatment:

4. TRANSPORT PLAN:

Evacuation Location (if different): *(Descriptive Location (drop point, intersection, etc.) or Lat. / Long.)* Patient's ETA to Evacuation Location:

Helispot / Extraction Site Size and Hazards:

5. ADDITIONAL RESOURCES / EQUIPMENT NEEDS:

*Example: Paramedic/EMT, Crews, Immobilization Devices, AED, Oxygen, Trauma Bag, IV/Fluid(s), Splints, Rope rescue, Wheeled litter, HAZMAT, Extrication*

6. COMMUNICATIONS: Identify State Air/Ground EMS Frequencies and Hospital Contacts as applicable

Function	Channel Name/Number	Receive (RX)	Tone/NAC *	Transmit (TX)	Tone/NAC *
COMMAND					
AIR-TO-GRND					
TACTICAL					

7. CONTINGENCY: **Considerations:** *If primary options fail, what actions can be implemented in conjunction with primary evacuation method? Be thinking ahead.*

8. ADDITIONAL INFORMATION: *Updates/Changes, etc.*

**REMEMBER:** Confirm ETA's of resources ordered. Act according to your level of training. Be Alert. Keep Calm. Think Clearly. Act Decisively.