

# Grouse Fire



## Monday August 5th Day Operations 0600-2200

\*\*\*Public Information Officer (PIO) Michelle Peterson 406-924-3831\*\*\*

**BRIEFING 0700**

**Weed Wash 0700—1900**

**Showers 0500—1200 & 1400—2200**

P1R4SM24 (0102)

MT-BDF-246327



Check-in, Maps, Finance Email

|                            |  |   |                        |
|----------------------------|--|---|------------------------|
| <b>INCIDENT OBJECTIVES</b> | 1. Incident Name<br><b>GROUSE FIRE</b> | 2. Date Prepared<br><b>August 4, 2024</b> | 3. Time<br><b>1900</b> |
|----------------------------|--|---|------------------------|

4. Operational Period: **August 5, 2024 Day Operations 0600-2200**

**Leaders Intent**

- Risk management tools will be used to evaluate planned actions to provide an acceptable level of risk vs. reward between the risk to critical values and risk to responders.

**Incident Objectives**

- Address the safety of firefighters, aviation and public through clear communication towards completion of objectives.
- Use a full suppression strategy with a combination of direct, indirect, and point zone protection tactics where reasonable to protect the identified critical values at risk.
- Develop contingency plans that identify locations and specific actions to be taken in the event the fire threatens or moves significantly towards the Pioneer Scenic By-way, Jerked Prairie, or Hwy 43.
- Coordinate with the Forest Archaeologist regarding cultural resources within the vicinity of the incident.
- Continue to ensure timely and accurate information is provided to the public including the DNRC, BLM, partners and stakeholders impacted by the fire regarding closure areas and other ongoing activities related to the Grouse Fire.

8. **Attachments (X if attached)**

|                                     |                                   |                                     |                                  |                                     |                                  |
|-------------------------------------|-----------------------------------|-------------------------------------|----------------------------------|-------------------------------------|----------------------------------|
| <input checked="" type="checkbox"/> | ICS 203                           | <input checked="" type="checkbox"/> | ICS 205 Incident Radio Comm Plan |                                     | Division Supply Order Form       |
| <input checked="" type="checkbox"/> | Incident Weather Forecast         |                                     | Fire Information Message         |                                     | NR Chainsaw Parts Order Form     |
|                                     | Fire Behavior Forecast            |                                     | Resource Advisor Message         | <input checked="" type="checkbox"/> | Incident Map                     |
| <input checked="" type="checkbox"/> | Safety Message                    |                                     | Human Resource                   | <input checked="" type="checkbox"/> | ICS 206 Medical Plan             |
| <input checked="" type="checkbox"/> | ICS 204 Division Assignment Lists | <input checked="" type="checkbox"/> | Training Message                 | <input checked="" type="checkbox"/> | ICS 214 Activity Log             |
| <input checked="" type="checkbox"/> | ICS 220 Air Operations Summary    | <input checked="" type="checkbox"/> | Finance Message                  | <input checked="" type="checkbox"/> | Medical Incident Report – 8 Line |

9. Prepared by SITL  
Katie Bonogofsky (T)

9. Approved by (Incident Commander)  
*Caleb Ober* 8-4-24

| ORGANIZATION ASSIGNMENT LIST  |  | 9. Operations Section                   |  |
|---|--|---|--|
| 1. Incident Name<br><br><b>Grouse Fire MT-BDF-246327</b>                |  | Line Ops<br>Planning Ops                | Greg Campbell<br>Jesse Meyers; Don Hammack |
| 2. Date<br>August 4, 2024   |  | 3. Time<br>1900                         |  |
| 4. Operational Period<br><b>August 5, 2024 Day Operations 0600—2200</b> |  | <b>a. Branch I - Divisions/Groups</b>   |  |
| 5. Incident Commander and Staff   |  | Branch Director                         |  |
| Incident Commander  | Richard Griffin<br>Caleb Olander (T)     | Division A                              | Brian Gorwitz<br>Tyson Luicer (T)          |
| Deputy  |  | Division M                              | Jerod Russell;<br>Trevor Buchanon (T)      |
| Safety Officer  | Donald Garringer                         | Division W                              | Mike King;<br>Matt Delaney (T)             |
| Information Officer   | Michelle Peterson                        | STRUCTURE                               | Mike Gustafson;<br>Evan Burke (T)          |
| Liaison Officer   |  | STAGING                                 |  |
| 6. Agency Representatives   |  | <b>b. Branch II - Divisions/Groups</b>  |  |
| Agency  | Name                                     | Branch Director                         |  |
| BDNF  | Antone Brennick;<br>Kristen Thompson (T) | Division/Group                          |  |
| Resource Advisors   | Ayme Swartz                              | Division/Group                          |  |
| 7. Planning Section   |  | <b>c. Branch III - Divisions/Groups</b> |  |
| Chief   | Kurt Wetzstein                           |   |  |
| Resources Unit  |  |   |  |
| SCKN  | Ashley Dettmann (T)                      |   |  |
| Situation Unit  | Paul Smith (T);<br>Katie Bonogofsky (T)  |   |  |
| Demobilization Unit   | Russ Walker (T)                          |   |  |
| Documentation Unit  |  | <b>c. Air Operations Branch</b>         |  |
| GISS  | RIST                                     | Air Operations                          |  |
| IMET  |  | Air Attack                              |  |
| SOPL  |  | FAO Acting                              | Bert Smith                                 |
| FBAN  |  | Helicopter Coord                        |  |
| HRSP  |  | Helibase Manager                        |  |
| LTAN  |  | Air Tanker Coord                        |  |
| ITSS  |  | <b>10. Finance Section</b>              |  |
| Air Quality   |  | Chief                                   | Arden Ward                                 |
| 8. Logistics Section  |  | Personnel Time                          | Victoria Davis (T)                         |
| Planning Logistics  | Lawrence Falcon; Randy Rector            | Personnel Time                          | Ashley Johnson (T)                         |
| Field Logistics   |  | Equipment Time                          | Tammy Carter (T)                           |
| Supply Unit/RCDM  | Jennie Jennings (T)                      | Comp/Claims Unit                        |  |
| Ordering Manager  |  | Cost Unit                               |  |
| Ground Support  |  |   |  |
| Food Unit   |  |   |  |
| Medical Unit  | David Poxleitner;<br>Alicia Tanrath (T)  | Prepared by SITL (T)                    |  |
| Communication Unit  |  |   |  |
| Security Unit   | Kevin Arnold                             |   |  |
| Facilities Unit   |  |   |  |

**Fire Weather Forecast:**

.DISCUSSION...Warm with low min Rh will be common on Monday and Tuesday. Westerly winds will also occur, strengthening on Tuesday. Rh recovery on Monday night will be modest.

There will be a chance showers and thunderstorms both afternoons and evenings. Watch for gusty outflow winds near storms. The chance of wetting rain is low ranging from 10-20%.

.MONDAY...

- \* Sky/Weather.....Sunny then becoming partly cloudy. Chance of showers and thunderstorms in the afternoon.
- \* CWR (> 0.10 Inch)...Less than 10 percent.
- \* Chance Lightning....30 percent.
- \* LAL.....3.
- \* Max Temperature.....71-76.
- \* Min Humidity.....19-24 percent.
- \* Wind (20 ft).....West 5-8 mph. Afternoon gusts to 20 mph.
- \* Mixing Height.....2500 ft agl increasing to 9500 ft agl.
- \* Mixing Winds.....West 10 mph.
- \* Haines Index.....4 low.
- \* Precip Amount.....0.00-0.10 inches.

.MONDAY NIGHT...

- \* Sky/Weather.....Partly cloudy. Chance of showers and thunderstorms in the evening. Slight chance of showers and thunderstorms overnight. Haze overnight.
- \* CWR (> 0.10 Inch)...20 percent.
- \* Chance Lightning....40 percent.
- \* LAL.....3.
- \* Min Temperature.....53-58.
- \* Max Humidity.....57-62 percent.
- \* Wind (20 ft).....West 5-8 mph shifting to the south around 6 mph overnight.
- \* Mixing Height.....4000 ft agl decreasing to less than 100 ft agl early in the evening.
- \* Mixing Winds.....Southwest 10 mph.
- \* Precip Amount.....0.03-0.13 inches.

.TUESDAY...

- \* Sky/Weather.....Partly cloudy. Haze in the morning. Chance of showers and thunderstorms in the afternoon.
- \* CWR (> 0.10 Inch)...Less than 10 percent.
- \* Chance Lightning....30 percent.
- \* LAL.....3.
- \* Max Temperature.....71-76.
- \* Min Humidity.....22-27 percent.
- \* Wind (20 ft).....Southwest 6-14 mph. Gusts up to 30 mph in the afternoon.
- \* Mixing Height.....500 ft agl increasing to 12000 ft agl.
- \* Mixing Winds.....Southwest 20 mph.
- \* Haines Index.....4 low.
- \* Precip Amount.....0.01-0.10 inches.

# HEALTH AND SAFETY MESSAGE

*SAFETY* starts with *YOU*

We are ALL accountable for SAFE behaviors

INCIDENT: **Grouse**

DATE: 8/5/2024

## Major Hazards and Risks:

**LCES:** Establish LCES on all fires. Lookouts are very important with the topography, Keep Communications clear and simple, Escape routes need to be flagged and cleaned of debris and safety zones can be back in the black watch for unburned fuel pockets.

**Heavy Equipment:** Maintain a safe distance...make eye contact and receive acknowledgement before moving near or past working equipment...never assume that the operator can see you! Work with HEQB whenever possible.

**Driving:** Watch out for speeding local and tourist traffic, Hwy 73. Slow down on blind corners. Be courteous and drive with due regard for safety. Practice "Defensive Driving".

**Manage the Risks:** Good risk management starts with **Situational Awareness**. Identifying the hazards and communicating them to everyone is the most important part! Developing and applying mitigations (actions) to manage the hazards is everyone's responsibility. Speak up, don't assume every firefighter is aware of what you are seeing. If you are a supervisor, encourage everyone to speak up and contribute to the process. Do not be a participant in the "**Normalization of Risk**".

\*\*\***Expect the unexpected**\*\*\*

### Watch Out Situation of the Day



11. UNBURNED FUEL BETWEEN YOU AND THE FIRE

### Look Up, Look Down, Look Around

\***Look Up:** Check the sky for any weather changes such as building or approaching thunderstorms, wind shifts or increasing in speed. Watch for air operations and water drops. Look for snags.

\***Look Down:** Watch your footing. Keep an eye out for snakes, bees nests and observe fine fuels on the ground.

\* **Look Around** Check fuel loading in the area, general terrain, current fire behavior and ladder fuels. Keep an eye on fellow firefighters for signs of heat stress and smoke inhalation.

### Hydration.

**Drink plenty of water and take it with you. Stay hydrated during the day and take breaks in shade if possible.**

Incident Safety Officer: Don Garringer

|                 |          |                   |            |
|-----------------|----------|-------------------|------------|
| ASSIGNMENT LIST | 1.Branch | 2. Division/Group | DIVISION A |
|-----------------|----------|-------------------|------------|

|  |  |
|--|--|
| 3. Incident Name<br><b>Grouse Creek Fire</b> | 4. Operational Period:<br>Date: August 5, 2024 Time: 0600-2200 |
|--|--|

| 5. Operations Personnel |                           |                     |                  |
|-------------------------|---------------------------|---------------------|------------------|
| Line Operations         | Greg Campbell             | Division Supervisor | Brian Gorwitz    |
| Planning Operations     | Don Hammack; Jesse Meyers |                     | Tyson Luicer (T) |
| Air Operations          |                           | Safety              | Donald Garringer |


| 6. Resources Assigned This Period           |            |           |           |  |              |                   |                  |  |
|---|------------|-----------|-----------|--|--------------|-------------------|------------------|--|
| Strike Team/Task Force/ Resource Designator | Last Shift | Leader    | No. Pers. |  | Trans. Needs | Drop Off PT./Time | Pick Up PT./Time |  |
| (C-01) CRW1 Bonneville IHC                  | 8/14       | Evans     | 22        |  | N            | 0600/ICP          | 2200             |  |
| (C-10) CRW1 Flathead IHC                    | 8/15       | Borgen    | 25        |  | N            | 0600/ICP          | 2200             |  |
| (C-05) CRW2 NY1                             | 8/5        | Prackajlo | 20        |  | N            | 0600/ICP          | 2200             |  |
| (C-07) CRW2 West Coast Reforestation        | 8/14       | Martinez  | 20        |  | N            | 0600/ICP          | 2200             |  |
| (E-28) ENG6-CNF-612                         | 8/7        | Lehmen    | 6         |  | N            | 0600/ICP          | 2200             |  |
| (E-46) ENG6-Butte fire w/UTV                | 8/12       | Mjelde    | 2         |  | N            | 0600/ICP          | 2200             |  |
| (E-33) ENG6-C&C Cougar Fire Co.             | 8/14       | Reilly    | 3         |  | N            | 0600/ICP          | 2200             |  |
| (E-35) ENG6-Castle Mountain                 | 8/15       | Welch     | 3         |  | N            | 0600/ICP          | 2200             |  |
|   |            |           |           |  |              |                   |                  |  |
|   |            |           |           |  |              |                   |                  |  |
|   |            |           |           |  |              |                   |                  |  |

**7. Control Operations**  
**Task** – Hold and control completed line along Pettengill creek along 186 road and north along hwy 73.  
**Purpose** – To secure fire to the west and north of Pettengill creek.  
**End State** – Fire stays to the west and north of Pettengill.

**8. Special Instructions: Swing shift operational period will be 1000 to 0200.**  
 -Utilize UAS PSD to minimize fire severity during firing operation.  
 -AMBO staged at DP-40, available to whole incident.  
 -Butte Fire in Alpha has 1 paramedic and 1 EMT.

| 9. Division/Group Communication Summary |                |                |         |         |       |                              |
|---|----------------|----------------|---------|---------|-------|------------------------------|
| Function                                | Frequency - RX | Frequency - TX | TX Tone | RX Tone | Chann | Comments                     |
| Dillon Dispatch                         | 173.08750      | 165.72500      | 103.5   |         | 1     | Tone guard number 8 (103.5). |
| R1 SOA RPT                              | 173.1875       | 164.38750      | 136.5   | 136.5   | 2     |                              |
| TACTICAL 1                              | 168.05000      | 168.05000      | 156.7   |         | 3     |                              |
| MUTUAL AID                              | 154.07000      | 154.07000      | 156.7   |         | 6     |                              |
| A/G PRIMARY                             | 168.52500      | 168.52500      |         |         | 9     |                              |
| A/G SECONDARY                           | 169.81250      | 169.81250      |         |         | 10    |                              |
| MEDICAL A/G                             | 155.34000      | 155.34000      | 156.7   |         | 11    |                              |
| Air Guard                               | 168.62500      | 168.62500      | 110.9   |         | 12    |                              |
| Ground Medical                          | 155.280        | 155.280        | 156.7   |         | 13    |                              |

|  |                      |                |              |
|--|----------------------|----------------|--------------|
| Prepared by SITL<br>Katie Bonogofsky (T) | Approved by (IC)<br> | Date<br>8/4/24 | Time<br>1900 |
|--|----------------------|----------------|--------------|

|  |                           |  |                         |                   |                                       |  |                  |
|--|---------------------------|--|-------------------------|-------------------|---------------------------------------|--|------------------|
| <b>ASSIGNMENT LIST</b>   |                           |  | 1.Branch                | 2. Division/Group | <b>DIVISION M</b>                     |  |                  |
| 3. Incident Name   |                           |  | 4. Operational Period:6 |                   |                                       |  |                  |
| <b>Grouse Creek Fire</b>   |                           |  | Date: August 5, 2024    |                   |                                       | Time: 0600-2200                          |                  |
| <b>5. Operations Personnel</b>   |                           |  |                         |                   |                                       |  |                  |
| Line Operations  | Greg Campbell             |  | Division Supervisor     |                   | Jerod Russell;<br>Trevor Buchanon (T) |  |                  |
| Planning Operations  | Don Hammack; Jesse Meyers |  |                         |                   |                                       |  |                  |
| Air Operations   |                           |  | Safety                  |                   | Donald Garringer                      |  |                  |
| <b>6. Resources Assigned This Period</b>   |                           |  |                         |                   |                                       |  |                  |
| Strike Team/Task Force/ Resource Designator  | Last Shift                | Leader   | No. Pers.               |                   | Trans. Needs                          | Drop Off PT./Time                        | Pick Up PT./Time |
|  |                           |  |                         |                   |                                       |  |                  |
|  |                           |  |                         |                   |                                       |  |                  |
|  |                           |  |                         |                   |                                       |  |                  |
|  |                           |  |                         |                   |                                       |  |                  |
|  |                           |  |                         |                   |                                       |  |                  |
|  |                           |  |                         |                   |                                       |  |                  |
|  |                           |  |                         |                   |                                       |  |                  |
| <b>7. Control Operations</b>   |                           |  |                         |                   |                                       |  |                  |
| Task – Scout line from Division Alpha/Mike break to Harriett Lou Creek.                |                           |  |                         |                   |                                       |  |                  |
| Purpose – To identify control features to lessen the fires impact to the scenic byway. |                           |  |                         |                   |                                       |  |                  |
| End State – Fire stays west of scenic byway.   |                           |  |                         |                   |                                       |  |                  |
| <b>8. Special Instructions:</b>  |                           |  |                         |                   |                                       |  |                  |
| -AMBO staged at DP-40, available to whole incident.                                    |                           |  |                         |                   |                                       |  |                  |
| -Butte Fire in Alpha has 1 paramedic and 1 EMT.  |                           |  |                         |                   |                                       |  |                  |
| <b>9. Division/Group Communication Summary</b>   |                           |  |                         |                   |                                       |  |                  |
| Function   | Frequency - RX            | Frequency - TX   | TX Tone                 | RX Tone           | Chann                                 | Comments<br>Tone guard number 8 (103.5). |                  |
| Dillon Dispatch  | 173.08750                 | 165.72500  | 103.5                   |                   | 1                                     |  |                  |
| R1 SOA RPT   | 173.1875                  | 164.38750  | 136.5                   | 136.5             | 2                                     |  |                  |
| TACTICAL 4   | 166.725                   | 166.725  |                         |                   | 15                                    |  |                  |
| MUTUAL AID   | 154.07000                 | 154.07000  | 156.7                   |                   | 6                                     |  |                  |
| A/G PRIMARY  | 168.52500                 | 168.52500  |                         |                   | 9                                     |  |                  |
| A/G SECONDARY  | 169.81250                 | 169.81250  |                         |                   | 10                                    |  |                  |
| MEDICAL A/G  | 155.34000                 | 155.34000  | 156.7                   |                   | 11                                    |  |                  |
| Air Guard  | 168.62500                 | 168.62500  | 110.9                   |                   | 12                                    |  |                  |
| Ground Medical   | 155.280                   | 155.280  | 156.7                   |                   | 13                                    |  |                  |
| Prepared by SITL<br>Katie Bonogofsky (T)   |                           | Approved by, (IC)<br> |                         |                   | Date<br>8/4/24                        | Time<br>1900                             |                  |

|  |                |  |                                      |   |                     |                                     |                                |                              |              |  |
|--|----------------|--|--------------------------------------|---|---------------------|-------------------------------------|--------------------------------|------------------------------|--------------|--|
| <b>ASSIGNMENT LIST</b>   |                |  |                                      | 1.Branch  |                     | 2. Division/Group <b>DIVISION W</b> |                                |                              |              |  |
| 3. Incident Name<br><b>Grouse Creek Fire</b>   |                |  |                                      | 4. Operational Period:6<br>Date: August 5, 2024 Time: 0600-2200 |                     |                                     |                                |                              |              |  |
| <b>5. Operations Personnel</b>   |                |  |                                      |   |                     |                                     |                                |                              |              |  |
| Line Operations<br>Planning Operations   |                | Greg Campbell<br>Don Hammack; Jesse Meyers |                                      |   | Division Supervisor |                                     | Mike King;<br>Matt Delaney (T) |                              |              |  |
| Air Operations   |                |  |                                      |   | Safety              |                                     | Donald Garringer               |                              |              |  |
| <b>6. Resources Assigned This Period</b>   |                |  |                                      |   |                     |                                     |                                |                              |              |  |
| Strike Team/Task Force/ Resource Designator  |                | Last Shift                                 | Leader                               |   | No. Pers.           | Trans. Neede                        | Drop Off PT./Time              | Pick Up PT./Time             |              |  |
| (E-52) ENG6-MT-BDF-71  |                | 8/18                                       | Larsen                               |   | 8                   | N                                   | 0600/ICP                       | 2200                         |              |  |
|  |                |  |                                      |   |                     |                                     |                                |                              |              |  |
|  |                |  |                                      |   |                     |                                     |                                |                              |              |  |
|  |                |  |                                      |   |                     |                                     |                                |                              |              |  |
|  |                |  |                                      |   |                     |                                     |                                |                              |              |  |
| <b>7. Control Operations</b>   |                |  |                                      |   |                     |                                     |                                |                              |              |  |
| Task – Scout line south of Division Alpha/Whiskey break along Pettengill Creek to Reservoir Creek.     |                |  |                                      |   |                     |                                     |                                |                              |              |  |
| Purpose – Look for opportunities to engage the fire as it approaches Pettengill Creek.                 |                |  |                                      |   |                     |                                     |                                |                              |              |  |
| End State – To keep fire north of Pettengill Creek.  |                |  |                                      |   |                     |                                     |                                |                              |              |  |
| <b>8. Special Instructions:</b>  |                |  |                                      |   |                     |                                     |                                |                              |              |  |
| -AMBO staged at DP-40, available to whole incident.<br>-Butte Fire in Alpha has 1 paramedic and 1 EMT. |                |  |                                      |   |                     |                                     |                                |                              |              |  |
| <b>9. Division/Group Communication Summary</b>   |                |  |                                      |   |                     |                                     |                                |                              |              |  |
| Function   | Frequency - RX |  | Frequency - TX                       |   | TX Tone             | RX Tone                             | Chann                          | Comments                     |              |  |
| Dillon Dispatch  | 173.08750      |  | 165.72500                            |   | 103.5               |                                     | 1                              | Tone guard number 8 (103.5). |              |  |
| R1 SOA RPT   | 173.1875       |  | 164.38750                            |   | 136.5               | 136.5                               | 2                              |                              |              |  |
| TACTICAL 1   | 168.05000      |  | 168.05000                            |   | 156.7               |                                     | 3                              |                              |              |  |
| MUTUAL AID   | 154.07000      |  | 154.07000                            |   | 156.7               |                                     | 6                              |                              |              |  |
| A/G PRIMARY  | 168.52500      |  | 168.52500                            |   |                     |                                     | 9                              |                              |              |  |
| A/G SECONDARY  | 169.81250      |  | 169.81250                            |   |                     |                                     | 10                             |                              |              |  |
| MEDICAL A/G  | 155.34000      |  | 155.34000                            |   | 156.7               |                                     | 11                             |                              |              |  |
| Air Guard  | 168.62500      |  | 168.62500                            |   | 110.9               |                                     | 12                             |                              |              |  |
| Ground Medical   | 155.280        |  | 155.280                              |   | 156.7               |                                     | 13                             |                              |              |  |
| Prepared by SITL<br>Katie Bonogofsky (T)   |                |  | Approved by (IC)<br><i>Carl Ober</i> |   |                     | Date<br>8/4/24                      |                                |                              | Time<br>1900 |  |



|                        |          |                               |
|------------------------|----------|-------------------------------|
| <b>ASSIGNMENT LIST</b> | 1.Branch | 2. Division/Group <b>Zulu</b> |
|------------------------|----------|-------------------------------|

|  |   |
|--|---|
| 3. Incident Name<br><b>Grouse Creek Fire</b> | 4. Operational Period:<br>Date: August 5, 2024      Time: 0600-2200 |
|--|---|

| 5. Operations Personnel |                           |                     |           |
|-------------------------|---------------------------|---------------------|-----------|
| Line Operations         | Greg Campbell             | Division Supervisor | Unstaffed |
| Planning Operations     | Don Hammack; Jesse Meyers |                     |           |
| Air Operations          |                           | Safety              |           |


| 6. Resources Assigned This Period           |            |        |           |  |              |                   |                  |
|---|------------|--------|-----------|--|--------------|-------------------|------------------|
| Strike Team/Task Force/ Resource Designator | Last Shift | Leader | No. Pers. |  | Trans. Neede | Drop Off PT./Time | Pick Up PT./Time |
|   |            |        |           |  |              |                   |                  |
|   |            |        |           |  |              |                   |                  |
|   |            |        |           |  |              |                   |                  |
|   |            |        |           |  |              |                   |                  |
|   |            |        |           |  |              |                   |                  |
|   |            |        |           |  |              |                   |                  |
|   |            |        |           |  |              |                   |                  |
|   |            |        |           |  |              |                   |                  |

|  |
|--|
| 7. Control Operations  |
| Task – Secure structures on 186 road and continue to monitor for hot spots.    |
| Purpose – Protect structures and stop fire impact to structures in Pettengill. |
| End State – Private property and structures protected.                         |

|  |
|--|
| 8. Special Instructions: Swing shift operational period will run 1000 to 0200. |
| -AMBO staged at DP-40, available to whole incident.                            |
| -Butte Fire in Alpha has 1 paramedic and 1 EMT.                                |

| 9. Division/Group Communication Summary |                |                |         |         |       |                              |
|---|----------------|----------------|---------|---------|-------|------------------------------|
| Function                                | Frequency - RX | Frequency - TX | TX Tone | RX Tone | Chann | Comments                     |
| Dillon Dispatch                         | 173.08750      | 165.72500      | 103.5   |         | 1     | Tone guard number 8 (103.5). |
| R1 SOA RPT                              | 173.1875       | 164.38750      | 103.5   | 136.5   | 2     |                              |
| TACTICAL 2                              | 168.20000      | 168.20000      | 156.7   |         | 4     |                              |
| MUTUAL AID                              | 154.07000      | 154.07000      | 156.7   |         | 6     |                              |
| A/G PRIMARY                             | 168.52500      | 168.52500      |         |         | 9     |                              |
| A/G SECONDAR                            | 169.81250      | 169.81250      |         |         | 10    |                              |
| MEDICAL A/G                             | 155.34000      | 155.34000      |         |         | 11    |                              |
| Air Guard                               | 168.62500      | 168.62500      | 110.9   | 110.9   | 12    |                              |
| Ground Medical                          | 155.280        | 155.280        | 156.7   |         | 13    |                              |

|  |                                       |                |              |
|--|---------------------------------------|----------------|--------------|
| Prepared by SITL<br>Katie Bonogofsky (T) | Approved by (IC)<br><i>Caleb Ober</i> | Date<br>8/4/24 | Time<br>1900 |
|--|---------------------------------------|----------------|--------------|

|   |                |   |            |   |                     |                              |  |                  |              |  |  |
|---|----------------|---|------------|---|---------------------|------------------------------|--|------------------|--------------|--|--|
| <b>ASSIGNMENT LIST</b>  |                |   | 1. Branch  |   | 2. Division/Group   |                              | <b>STRUCTURE</b>   |                  |              |  |  |
| 3. Incident Name<br><b>Grouse Creek Fire</b>  |                |   |            | 4. Operational Period:<br>Date: August 5, 2024      Time: 0600-2200 |                     |                              |  |                  |              |  |  |
| <b>5. Operations Personnel</b>  |                |   |            |   |                     |                              |  |                  |              |  |  |
| Line Operations<br>Planning Operations  |                | Greg Campbell<br>Don Hammack; Jesse Meyers  |            |   | Division Supervisor |                              | Mike Gustafson;<br>Evan Burke (T);<br>Fernando Quiroga (T) |                  |              |  |  |
| Air Operations  |                |   |            |   | Safety              |                              | Donald Garringer   |                  |              |  |  |
| <b>6. Resources Assigned This Period</b>  |                |   |            |   |                     |                              |  |                  |              |  |  |
| Strike Team/Task Force/ Resource Designator   |                | Last Shift  | Leader     | No. Pers.   |                     | Trans. Neede                 | Drop Off PT./Time  | Pick Up PT./Time |              |  |  |
| (C-09) CRW2 Lava  |                | 8/14  | Trujillo   | 20  |                     | N                            | 0600/ICP   | 2200             |              |  |  |
| (E-02) ENG6 Greywolf  |                | 8/13  | Grant      | 3   |                     | N                            | 0600/ICP   | 2200             |              |  |  |
| (E-37) ENG6 Whitegrass Fire   |                | 8/16  | Whitegrass | 3   |                     | N                            | 0600/ICP   | 2200             |              |  |  |
| (E-36) ENG6 Bakken  |                | 8/16  | Bakken     | 3   |                     | N                            | 0600/ICP   | 2200             |              |  |  |
| ENG6 1315   |                |   | Klanecky   | 3   |                     | N                            | 0600/ICP   | 2200             |              |  |  |
| (E-13) Water tender-Blacktail   |                | 8/10  | Smith      | 1   |                     | N                            | 0600/ICP   | 2200             |              |  |  |
| <b>7. Control Operations</b>  |                |   |            |   |                     |                              |  |                  |              |  |  |
| Task – Secure structures on 186 road and continue to monitor for hot spots.   |                |   |            |   |                     |                              |  |                  |              |  |  |
| Purpose – Protect structures and stop fire impact to structures in Pettengill.  |                |   |            |   |                     |                              |  |                  |              |  |  |
| End State – Private property and structures protected.  |                |   |            |   |                     |                              |  |                  |              |  |  |
| <b>8. Special Instructions: Swing shift operational period will run 1000 to 0200.</b>   |                |   |            |   |                     |                              |  |                  |              |  |  |
| -AMBO staged at DP-40, available to whole incident.<br>-Butte Fire in Alpha has 1 paramedic and 1 EMT.<br>-Engine 1315 night shift patrol |                |   |            |   |                     |                              |  |                  |              |  |  |
| <b>9. Division/Group Communication Summary</b>  |                |   |            |   |                     |                              |  |                  |              |  |  |
| Function  | Frequency - RX | Frequency - TX  | TX Tone    | RX Tone   | Chann               | Comments                     |  |                  |              |  |  |
| Dillon Dispatch   | 173.08750      | 165.72500   | 103.5      |   | 1                   | Tone guard number 8 (103.5). |  |                  |              |  |  |
| R1 SOA RPT  | 173.1875       | 164.38750   | 103.5      | 136.5   | 2                   |                              |  |                  |              |  |  |
| TACTICAL 3  | 168.60000      | 168.60000   | 156.7      |   | 5                   |                              |  |                  |              |  |  |
| MUTUAL AID  | 154.07000      | 154.07000   | 156.7      |   | 6                   |                              |  |                  |              |  |  |
| A/G PRIMARY   | 168.52500      | 168.52500   |            |   | 9                   |                              |  |                  |              |  |  |
| A/G SECONDAR  | 169.81250      | 169.81250   |            |   | 10                  |                              |  |                  |              |  |  |
| MEDICAL A/G   | 155.34000      | 155.34000   |            |   | 11                  |                              |  |                  |              |  |  |
| Air Guard   | 168.62500      | 168.62500   | 110.9      | 110.9   | 12                  |                              |  |                  |              |  |  |
| Ground Medical  | 155.280        | 155.280   | 156.7      |   | 13                  |                              |  |                  |              |  |  |
| Prepared by SITL<br>Katie Bonogofsky (T)  |                | Approved by (IC)<br> |            |   | Date<br>8/4/24      |                              |  |                  | Time<br>1900 |  |  |

| <b>ASSIGNMENT LIST</b>   |                |  | 1.Branch  |         | 2. Division/Group <b>STAGING</b> |                              |                  |
|--|----------------|--|---|---------|----------------------------------|------------------------------|------------------|
| 3. Incident Name<br><b>Grouse Creek Fire</b>   |                |  | 4. Operational Period:6<br>Date: August 5, 2024 Time: 0600-2200 |         |                                  |                              |                  |
| <b>5. Operations Personnel</b>   |                |  |   |         |                                  |                              |                  |
| Line Operations<br>Planning Operations   |                | Greg Campbell<br>Don Hammack; Jesse Meyers |   |         | Division Supervisor              |                              |                  |
| Air Operations   |                | Safety                                     |   |         | Donald Garringer                 |                              |                  |
| <b>6. Resources Assigned This Period</b>   |                |  |   |         |                                  |                              |                  |
| Strike Team/Task Force/ Resource Designator  | Last Shift     | Leader                                     | No. Pers.   |         | Trans. Neede                     | Drop Off PT./Time            | Pick Up PT./Time |
| (E-09) SKG1-Bigfoot  | 8/11           | Spencer                                    | 2   |         | N                                | 0600/ICP                     | 2200             |
| (E-42) SKG1-RT Logging LLC   | 8/16           | Thompson                                   | 2   |         | N                                | 0600/ICP                     | 2200             |
| (E-43) Dozer-CC Stacking   | 8/16           | Cornell                                    | 2   |         | N                                | 0600/ICP                     | 2200             |
| (O-56) Falling Mod   | 8/16           | Clifford                                   | 2   |         | N                                | 0600/ICP                     | 2200             |
| (O-58) EMPF  | 8/18           | Becca Wallace                              | 1   |         | N                                | 0600/ICP                     | 2200             |
| (O-59) EMPF  | 8/18           | John Baker                                 | 1   |         | N                                | 0600/ICP                     | 2200             |
| <b>7. Control Operations</b>   |                |  |   |         |                                  |                              |                  |
| Task – Be available to all divisions upon requests.  |                |  |   |         |                                  |                              |                  |
| Purpose – To support all divisions.  |                |  |   |         |                                  |                              |                  |
| End State – All divisions are supported.   |                |  |   |         |                                  |                              |                  |
| <b>8. Special Instructions: Report to Planning Ops for morning in-briefing.</b>                        |                |  |   |         |                                  |                              |                  |
| -AMBO staged at DP-40, available to whole incident.<br>-Butte Fire in Alpha has 1 paramedic and 1 EMT. |                |  |   |         |                                  |                              |                  |
| <b>9. Division/Group Communication Summary</b>   |                |  |   |         |                                  |                              |                  |
| Function   | Frequency - RX | Frequency - TX                             | TX Tone   | RX Tone | Chann                            | Comments                     |                  |
| Dillon Dispatch  | 173.08750      | 165.72500                                  | 103.5   |         | 1                                | Tone guard number 8 (103.5). |                  |
| R1 SOA RPT   | 173.1875       | 164.38750                                  | 136.5   | 136.5   | 2                                |                              |                  |
| TACTICAL 1   | 168.05000      | 168.05000                                  | 156.7   |         | 3                                |                              |                  |
| MUTUAL AID   | 154.07000      | 154.07000                                  | 156.7   |         | 6                                |                              |                  |
| A/G PRIMARY  | 168.52500      | 168.52500                                  |   |         | 9                                |                              |                  |
| A/G SECONDARY  | 169.81250      | 169.81250                                  |   |         | 10                               |                              |                  |
| MEDICAL A/G  | 155.34000      | 155.34000                                  | 156.7   |         | 11                               |                              |                  |
| Air Guard  | 168.62500      | 168.62500                                  | 110.9   |         | 12                               |                              |                  |
| Ground Medical   | 155.280        | 155.280                                    | 156.7   |         | 13                               |                              |                  |
| Prepared by SITL<br>Katie Bonogofsky (T)   |                | Approved by (IC)<br><i>Carol Ober</i>      |   |         | Date<br>8/4/24                   |                              |                  |

| AIR OPERATIONS SUMMARY  |                                  | Prepared By: Nick Plovanic  | Prepared Date: 8/5/2024 | Prepared Time: 17:00                               |           |                               |
|---|----------------------------------|---|-------------------------|--|-----------|-------------------------------|
| 1. INCIDENT NAME:<br>B-D IA/Support/grouse fire   |                                  | 2. Operational Date:<br>August 5, 2024  |                         | 3. Butte Sunset:<br>20:54                          |           |                               |
|   |                                  |   |                         | Butte Pumpkin:<br>21:24                            |           |                               |
| 4. Remarks Safety Notes, Hazards, Air ops<br>Mission plan for density altitude (DA) and windy conditions<br>Report any unauthorized/UAS activity<br>Wash bucket, if moving between dipsites over Contentinal Divide.<br>Offer constructive feedback to pilots during tactical operations<br>Status current at time of report. Changes occur constantly. |                                  | 5. Medevac Aircraft: Order through dispatch<br>Life Flight ALS 800-232-0911<br>7HX Litter |                         | 6. TFRs:<br>4/9355 Grouse Fire                     |           |                               |
| 7. Personnel:   | Phone #                          | 8. Frequencies:   | AM                      | FM   |           |                               |
| B-D FAO   | Bert Smith<br>406-660-7371       | Nat. Flight Follow<br>Air Guard   |                         | 168.6500 R4/Tx Tn 110.9<br>168.6250 R4/Tx Tn 110.9 |           |                               |
| Dillon Dispatch   | Aircraft Desk<br>406-683-3939    |   |                         |  |           |                               |
| N205GE  | Rich Reneau<br>406-493-5799      | IA A/G 29   |                         | 166.9000   |           |                               |
| N27HX   | Jeremy Neal<br>505-709-7091      | IA A/G 26   |                         | 166.6875   |           |                               |
| N114MA  | Nick Plovanic<br>406-366-0179    | IA A/A Primary  | 119.6250                |  |           |                               |
| N721HT  | Cory Dutton<br>530-306-4589      | IA A/A Secondary  | 134.1500                |  |           |                               |
| N172AC  | Jerrid Silva<br>406-381-5963     | Medical TAN   |                         | 155.340 Tx Tn 156.7                                |           |                               |
| N562AJ  | Brendan Mullen<br>406-560-2395   | Medical WHITE   |                         | 155.280 Tx Tn 156.7                                |           |                               |
| UR31  | Shannon Courtney<br>865-430-4753 | DNRC A/G Yellow   |                         | 151.2200   |           |                               |
| UR32  | Aaron Farmer<br>505-206-9113     | DNRC A/G Orange   |                         | 151.4000   |           |                               |
|   |                                  |   |                         |  |           |                               |
|   |                                  |   |                         |  |           |                               |
|   |                                  |   |                         |  |           |                               |
|   |                                  | Grouse A/A  | 124.6000                |  |           |                               |
|   |                                  | Grouse A/G Primary  |                         | 168.5250   |           |                               |
|   |                                  | Grouse A/G Secondary  |                         | 169.8125   |           |                               |
|   |                                  |   |                         |  |           |                               |
|   |                                  |   |                         |  |           |                               |
| 9. Fixed-Wing GACC:<br>Air Tankers/SEATS: Order through dispatch  |                                  |   |                         |  |           |                               |
| Lead Plane/ASM: Order through dispatch  |                                  |   |                         |  |           |                               |
| Air Attack: Order through dispatch  |                                  |   |                         |  |           |                               |
| Helicopters GACC: Order through dispatch  |                                  |   |                         |  |           |                               |
| T1 Avail. GACC Lend/Lease   |                                  |   |                         |  |           |                               |
| T2 Avail. GACC Lend/Lease   |                                  |   |                         |  |           |                               |
| T3 Avail. GACC Lend/Lease   |                                  |   |                         |  |           |                               |
| SMJK GACC: Order through dispatch   |                                  |   |                         |  |           |                               |
| HELIPTERS/UAS   |                                  |   |                         |  |           |                               |
| FAA N#  | Call Sign                        | Make/Model  | Type                    | Base   | Available | Remarks                       |
| N205GE  | 5GE                              | UH-1H   | 2                       | KBTM   | 830       | Restricted /Forest IA         |
| N27HX   | 7HX                              | Bell 407  | 3                       | KBTM   | 900       | Standard/ Forest IA           |
| N721HT  | 1HT                              | Sky Crane   | 1                       | KBTM   |           | Down for maintenance 1-2 days |
| N172AC  | 2AC                              | Sky Crane   | 1                       | KBTM   | 830       | Restricted/ Grouse fire       |
| UR31  | UR31                             |   | 3                       | Grouse fire  | 600       |                               |
| UR32  | UR32                             |   | 3                       | Grouse fire  | 600       |                               |
| N144MA  | 4MA                              | Bell 407  | 3                       | KBTM   | 900       | Standard/Forest IA            |
| N562AJ  | 2AJ                              | Sky Crane   | 1                       | KBTM   | 830       | Restricted/ Forest IA         |
| Notes/Remarks   |                                  |   |                         |  |           |                               |
| Flight follow through appropriate dispatch until contact has been made on the incident. Then flight follow local.   |                                  |   |                         |  |           |                               |
| Cost Summarys bertram.smith@usda.gov  |                                  |   |                         |  |           |                               |

# ICS 205 - INCIDENT RADIO COMMUNICATIONS PLAN

CONTROLLED UNCLASSIFIED  
INFORMATION/BASIC

**1. Incident Name:** GROUSE  
**Incident Channels**

**2. Date/Time Prepared** Date: 8/4/24 Time: 1900  
**3. Operational Period:** Date From: 08/5/24 Date To: 08/5/24  
 Time From: 0600 Time To: 2200

| Ch# | Function        | Name        | Assigned To     | Rx Freq   | Rx Tone | Tx Freq   | Tx Tone | Mode | Notes                        |
|-----|-----------------|-------------|-----------------|-----------|---------|-----------|---------|------|------------------------------|
| 1   | DILLON DISPATCH | VIPOND PARK | All Divisions   | 173.08750 |         | 165.72500 | 103.5   | A    | Tone guard number 8 (103.5). |
| 2   | TACTICAL RPT    | R1 SOA RPT  | All Divisions   | 173.1875  | 136.5   | 164.38750 | 136.5   | A    |                              |
| 3   | TACTICAL        | TAC 1       | DIV A           | 168.05000 |         | 168.05000 | 156.7   | A    |                              |
| 4   | TACTICAL        | TAC 2       | DIV M/W         | 168.20000 |         | 168.20000 | 156.7   | A    |                              |
| 5   | TACTICAL        | TAC 3       | STRUCTURE GROUP | 168.60000 |         | 168.6000  | 156.7   | A    |                              |
| 6   | MUTUAL AID      | RED         | All Divisions   | 154.07000 |         | 154.07000 | 156.7   | A    |                              |
| 7   | MUTUAL AID      | MAROON      | UNASSIGNED      | 154.28000 |         | 154.28000 | 156.7   | A    |                              |
| 8   | MUTUAL AID      | GOLD        | UNASSIGNED      | 153.90500 |         | 153.90500 | 156.7   | A    |                              |
| 9   | A/G PRIMARY     | A/G 1       | All Divisions   | 168.52500 |         | 168.52500 |         | A    |                              |
| 10  | A/G SECONDARY   | A/G 2       | All Divisions   | 169.81250 |         | 169.81250 |         | A    |                              |
| 11  | LIFEFLIGHT A/G  | TAN         | All Divisions   | 155.34000 |         | 155.34000 | 156.7   | A    |                              |
| 12  | Air Guard       | Air Guard   | All Divisions   | 168.62500 | 110.9   | 168.62500 | 110.9   | A    |                              |
| 13  | Ground Medical  | White       | All Divisions   | 155.280   |         | 155.280   | 156.7   | A    |                              |
| 15  | TACTICAL        | TAC 4       | M               | 166.725   |         | 166.725   |         | A    |                              |
| 16  |                 |             |                 |           |         |           |         |      |                              |
| 17  |                 |             |                 |           |         |           |         |      |                              |
| 18  |                 |             |                 |           |         |           |         |      |                              |
| 19  |                 |             |                 |           |         |           |         |      |                              |

**5. Special Instructions**

6. Prepared by: Katie Bonogofsky SITL (T)

ICS 205 - CONTROLLED UNCLASSIFIED INFORMATION/BASIC

MMS IAP Date/Time: Signature: *Katie Bonogofsky* 8.4.24 21:00

# REMEMBER TO WEED WASH INCOMING AND OUTGOING



In 1939, Montana passed the “Weed Control” law, which included regulations on weed seed.

A primary example of a new technology was the automobile. In 1931, the geographer Isaiah Bowman observed that “the dry western grass country” of Montana was “built on gasoline.” Bowman did not associate the “gasoline culture” of the Great Plains with the spread of weeds, but they were connected. Cars, trucks, tractors, and farm equipment provided an outstanding vehicle for weed seeds, and the machines came with an expanding network of roads that served as corridors and jumping-off places for the weed advance into the Big Sky state. Beginning in the Second World War, for example, the owners of custom combining outfits—trucks, trailers, and combines—drove north from Oklahoma, following the seasonal northerly advance of the wheat harvest. Moving from field to field, the vehicles picked up so many weed seeds that by the time they reached the heart of Montana’s grain districts they were veritable rolling collections of weed life. In the fall of 1958, the Chouteau County extension agent counted eleven kinds of weed seeds on a single combine.<sup>24</sup>

One plant that spread with alarming vigor in conjunction with automobiles was spotted knapweed, a hardy Eurasian species with a tough, sinewy stalk and purple or pink blossoms that looked like cornflowers. Discovered in Ravalli County in the early twentieth century—exactly when is unclear—it was prolific and aggressive: each plant produced thousands of seeds, and each plant emitted toxins that inhibited the growth of surrounding vegetation. Human actions assisted these natural advantages. Hay, crop seeds (knapweed evidently arriving in a batch of alfalfa seed), and irrigation water carried the plant’s offspring. Logging, farming, grazing, railroads, and construction disturbed soil and opened space in which those seeds could grow. But more than anything else, automobiles and roads transformed knapweed into one of the most notorious Montana plants. On weedy prairies, fields, and roads, cars and trucks snagged seeds; wind, water, vegetation, or vibration later dislodged the tiny grains. By the late twentieth century, Montana contained nearly 12,000 miles of highways and some 66,000 miles of smaller roads, “a web of corridors” along which knapweed and other unwanted vegetation moved. By such means did knapweed expand to some 4.5 million Montana acres by the 1990s. In Missoula and Ravalli counties it grew so thickly and over such a large area that concerned citizens thought it an environmental disaster.<sup>25</sup>

## **Virtual FINANCE**

E-mail all CTRs to:  
2024.grouse.finance@firenet.gov

Arden Ward:  
575-342-2044

---

### **DEMOB LIST:**

#### **Demob 8/5**

A1.4 UAS-Whitt

#### **LWD-8/5 Demob 8/6**

O-11 Don Garringer

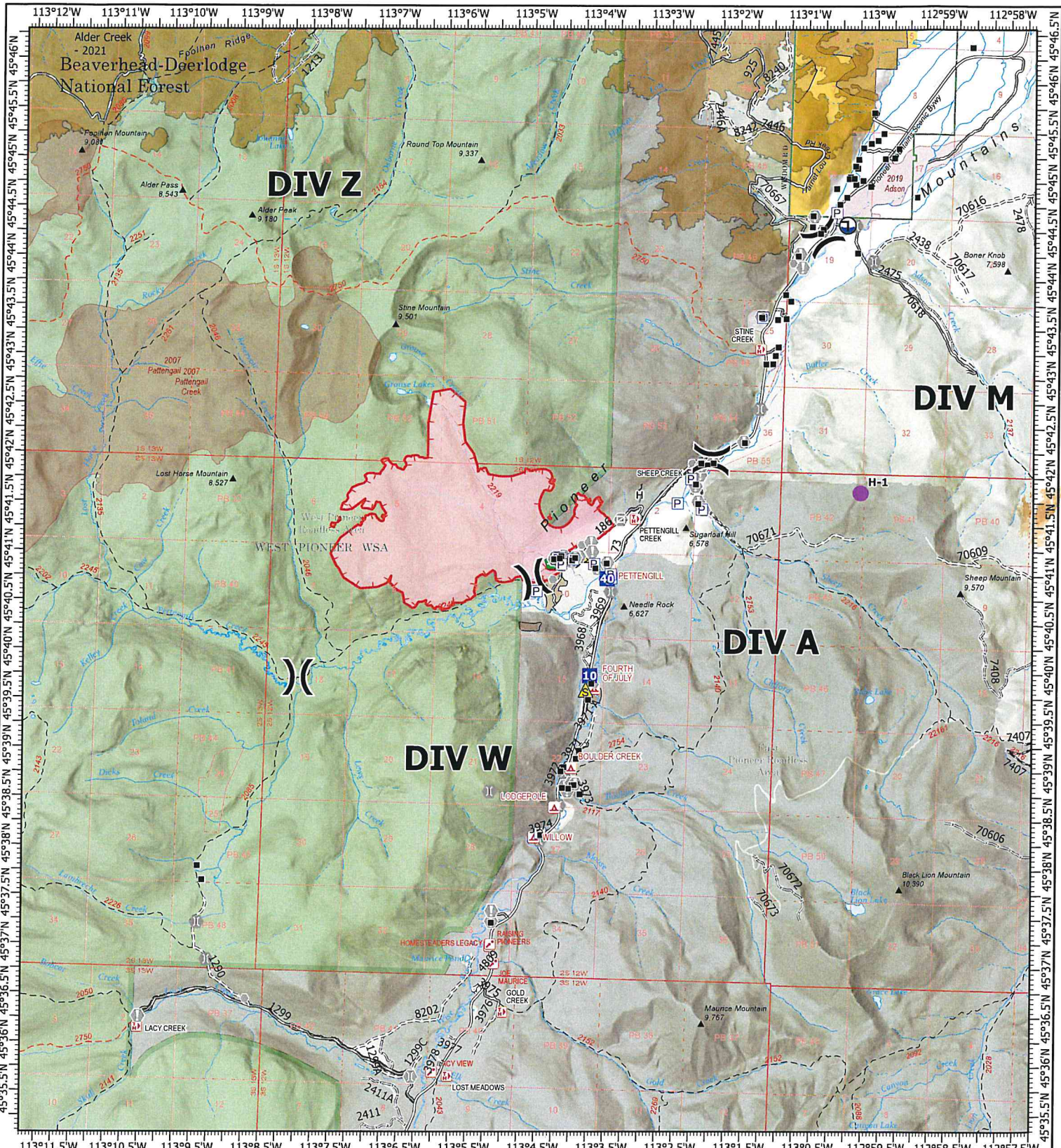
O-24 Ashley Dettmann

O-23 Randy Rector

C-8 AJC#4

C-5 New York

- See Planning tent for checkout sheet.
- Call Finance at 575-342-2044.
- Get all CTRs or Shift Tickets in early. Contract resources make sure you have an evaluation.
- WEED WASH!!! Located at 64800 MT-43, Wise River.



**IAP**  
**Grouse**  
**MT-BDF-246327**  
**08/05/2024 Day**  
 2,600 acres at 08/04/2024 @ 1400 MDT  
 0 0.250.5 1 1.5 2  
 Miles  
 1:100,000 | RIST 2024 | 8/4/2024 1834  
 Recon Flight  
 North American 1983 Datum, Lat/Long Grid

|                               |                   |   |
|-------------------------------|-------------------|---|
| Wildfire Daily Fire Perimeter | Other             | Road, high clearance                          |
| Uncontained                   | Gate              | FS Closed Road                                |
| Structure                     | Bridge            | Infrastructure Bridge EDW Deck Type           |
| Completed Hand Line           | Culvert           | USFS Roadless Areas                           |
| Access Route                  | Safety Zone       | FS Wilderness Study Area Boundary             |
| Other                         | Draft Site        | Forest Service Land                           |
| Helispot                      | Road              | Bureau of Land Management Lands               |
| Division Break                | Road, Dirt/Gravel | Interagency Fire Perimeter History Since 2004 |
| Drop Point                    | Road, Paved       | Interagency Fuels Treatments                  |
| Value at Risk                 | Road, Dirt/Gravel | Alder Creek 2021                              |







# Grouse Fire

## Incident Within an Incident: Emergency Action Plan

LEADERS INTENT - To provide efficient patient care and facilitate rapid transport to definitive care. In the case of a serious accident requiring patient transport to a medical facility:

- The IWI commander will be established at the incident scene.
- The closest ranking Operations Leader will proceed to the IWI site and assist if necessary.
- Use the 8-line protocol to assess patient; if patient evaluation is either Red or Yellow, use **VIPOND PARK frequency (Command) 173.08750 RX, 165.72500 TX, tone 103.5 on TX** to **contact Dillon Dispatch to initiate medical IWI**. If patient assessment is Green, contact Fireline supervision for incident medical personnel to respond.
- IWI Commander has authority to request from Dillon Dispatch Life-Flight Helicopter and/or ALS Ambulance along with incident medical personnel.
- If patient assessment is Red, IWI Commander is encouraged to activate multiple transport options. IWI Commander will utilize appropriate option for patient transport to definitive care.
- For extraction forest aircraft, utilize Air to Ground Primary (**168.52500 RX/TX**). If using an air ambulance, use TAN (155.3400 RX/TX) to communicate with air ambulance.
- If incident should occur outside the Grouse Fire Incident, contact 911 and Dillon Dispatch on **VIPOND PARK frequency (Command) 173.08750 RX, 165.72500 TX, tone 103.5 on TX** for monitoring and support and to notify whether patient is incident personnel or civilian.
- Patients evaluated as Green notify nearest supervisor of the location of the incident and assigned EMT to determine treatment and transport.
- Upon notification of a serious accident, the following will report to nearest radio: Incident Commander and Operations Section Chief.
- Incident radio traffic on **VIPOND PARK frequency (Command) 173.08750 RX, 165.72500 TX, tone 103.5 on TX** will be monitored by the Dillon Interagency Dispatch Center.

Approved by: /s/ Caleb Olander, Incident Commander (T)  
Date: 07/31/2024

# MEDICAL PLAN (ICS 206)

|   |   |                                  |                              |   |         |    |
|---|---|----------------------------------|------------------------------|---|---------|----|
| <b>MEDICAL PLAN</b><br>ICS 206  | 1. INCIDENT NAME<br><br>Grouse                        | 2. DATE PREPARED<br><br>8/4/2024 | 3. TIME PREPARED<br><br>1600 | 4. OPERATIONAL PERIOD<br><br>8/5/2024 0600-0600   |         |    |
| <b>5. INCIDENT MEDICAL AID STATIONS</b>   |   |                                  |                              |   |         |    |
| MEDICAL AID STATIONS  | LOCATION  | PARAMEDICS                       |                              |   |         |    |
|   |   | YES                              | NO                           |   |         |    |
| *ICP Medical Unit   | *Wise River Airport Base camp (not fully ALS staffed) | *X                               |                              |   |         |    |
| <b>6. TRANSPORTATION</b>  |   |                                  |                              |   |         |    |
| <b>A. AIR AMBULANCES</b>  |   |                                  |                              |   |         |    |
| NAME  | LOCATION  | PHONE                            | PARAMEDICS                   |   |         |    |
|   |   |                                  | YES                          | NO  |         |    |
| Helpflight  | Billings, MT  | 406-346-2715                     | X                            |   |         |    |
| Helena Short Haul   | Helena, MT  | Air Ops                          |                              | X   |         |    |
| Lifeflight Network  | Butte, MT   | Dillon Dispatch                  | X                            |   |         |    |
| <b>B. GROUND AMBULANCES</b>   |   |                                  |                              |   |         |    |
| NAME  | LOCATION  | PARAMEDICS                       |                              |   |         |    |
|   |   | YES                              | NO                           |   |         |    |
| A1 Ambulance Service  | Butte, MT   | X                                |                              |   |         |    |
| Anaconda Ambulance  | Anaconda, MT  | X                                |                              |   |         |    |
| Fireline Medics Ambulance   | DP-40   | X                                |                              |   |         |    |
| <b>7. HOSPITALS</b>   |   |                                  |                              |   |         |    |
| NAME  | ADDRESS   | TRAVEL TIME                      |                              | PHONE   | HELIPAD |    |
|   |   | AIR                              | GROUND                       |   | YES     | NO |
| St. James Healthcare  | 400 S. Clark Butte, MT                                | 10min                            | 50min                        | 406-723-2585  | X       |    |
| St. Patrick Hospital  | 500 W. Broadway St. Missoula, MT                      | 40min                            | 2.5hr                        | 406-748-3600  | X       |    |
| Community Hosp of Anaconda  | 401 W. Pennsylvania St. Anaconda MT                   | 10                               | 90 min                       | 406-563-8500  | X       |    |
| St. Vincent Regional  | 1233 N 30th St, Billings, MT                          | 60 min                           | 4 hr 15                      | 406-657-7000  | X       |    |
| <b>8. MEDICAL EMERGENCY PROCEDURES</b>  |   |                                  |                              |   |         |    |
| <p style="text-align: center;"><b><u>LINE "MEDICAL-EMERGENCY" PLAN:</u></b></p> <p><b>Reporting Party</b> to contact Dillon Dispatch on Vipond with:</p> <p>* Patient Complaint, Condition and Location via Tactical or Command Frequency.</p> <p><b>*Red, Yellow &amp; Green</b> Patients Trigger Incident Within Incident (<b>IWI</b>) <b>*Refer to IWI plan in this IAP.*</b></p> <p>* The highest qualified responder will run "<b>Medical-Emergency</b>" on the assigned frequency assuming the role of IWI IC.</p> <p>*IWI IC will use "<b>Medical Incident Report</b>" worksheet in the IAP or IRPG.</p> <p>* Dispatch contacts Medical Unit Leader on the assigned frequency or cell phone.</p> |   |                                  |                              | <p style="text-align: center;"><b><u>Medical Unit Contacts:</u></b></p> <p>Dave Poxleitner MEDL LWD8/7 406-420-3744*temp</p> <p>Alicia Tanrath MEDL (t) 406-493-7043</p> <p>Anita Parkin MEDL 406-382-0136</p> <p style="text-align: center;"><b><u>IN CAMP</u></b></p> <p>MEDL first, then "FM Ambo", or "Butte Fire", nights</p> <p>*Contact MEDL as soon as possible. Can escalate to Dispatch or 911 if needed or urgent.</p> |         |    |
| <b>ICS 206 WF</b>   | 9. PREPARED BY: (Medical Unit Leader) MEDL            |                                  |                              | 10. REVIEWED BY: (Safety Officer)   |         |    |
|   | Dave Poxleitner                                       |                                  |                              | Don Garringer   |         |    |

# MEDICAL PLAN (ICS 206 WF)

| 1. INCIDENT/PROJECT NAME                                    |                                      |                               |                                  |                               |   |    |                        |
|---|--------------------------------------|-------------------------------|----------------------------------|-------------------------------|---|----|------------------------|
| Grouse  |                                      |                               |                                  | Date/Time: 8/5/2024 0600-0600 |   |    |                        |
| 3. AMBULANCE SERVICES                                       |                                      |                               |                                  |                               |   |    |                        |
| NAME  | COMPLETE ADDRESS                     | PHONE                         | PARAMEDICS                       |                               |   |    |                        |
|   |                                      |                               | YES                              | NO                            |   |    |                        |
| A1 Ambulance  | 507 Centennial Ave, Butte, MT        | 406-490-3130                  | X                                |                               |   |    |                        |
| Jefferson Valley EMS  | 203 W. Legion Ave, Whitehall, MT     | 406-346-2715                  | X                                |                               |   |    |                        |
| 4. AIR AMBULANCE SERVICES                                   |                                      |                               |                                  |                               |   |    |                        |
| NAME  | PHONE                                | TYPE OF AIRCRAFT/CAPABILITY   |                                  |                               |   |    |                        |
| Helpflight- Billings, MT                                    | 406-238-6215                         | EC-145                        |                                  |                               |   |    |                        |
| Helena Short Haul   | Dillon Dispatch                      | Bell 407                      |                                  |                               |   |    |                        |
| Lifeflight Network  | 800-232-0911                         | Augusta 119 Koala             |                                  |                               |   |    |                        |
| NAME AND COMPLETE ADDRESS                                   | GPS DATUM-WGS 84 COORDINATE STANDARD | TRAVEL TIME                   |                                  | PHONE                         | HELIPAD   |    | FACILITY LEVEL OF CARE |
|   |                                      | AIR                           | GROUND                           |                               | YES   | NO |                        |
| St. James Healthcare<br>400 S.Clark St., Butte,MT           | LAT: N 46-00.542500                  | 10min                         | 50min                            | 406-723-2585                  | X   |    | Level 3                |
|   | LONG: W 112-32.6623                  |                               |                                  |                               |   |    |                        |
|   | VHF:                                 |                               |                                  |                               |   |    |                        |
| St. Patrick Hospital<br>500 W.Broadway St, Missoula         | LAT: N 46-52.527333                  | 40min                         | 2.5hr                            | 406-748-3600                  | X   |    | Level 2                |
|   | LONG: W 113-59.9865                  |                               |                                  |                               |   |    |                        |
|   | VHF:                                 |                               |                                  |                               |   |    |                        |
| Community Hosp of Anaconda<br>401 W. Pennsylvania St., Ana. | LAT: N 46-7.93                       | 10                            | 90 min                           | 406-563-8500                  | X   |    | Critical Access        |
|   | LONG: W 112-57.43                    |                               |                                  |                               |   |    |                        |
|   | VHF:                                 |                               |                                  |                               |   |    |                        |
| St. Vincent Regional<br>1027 N. 27th St., Billings,MT       | LAT: N 45-47.626667                  | 60 min                        | 3 hrs 20 mins                    | 406-657-7000                  | X   |    | Level 1                |
|   | LONG: W 108-31.1150                  |                               |                                  |                               |   |    |                        |
|   | VHF:                                 |                               |                                  |                               |   |    |                        |
| 6. DIVISION/BRANCH/GROUP                                    |                                      | AREA/LOCATION/CAPABILITY      |                                  |                               |   |    |                        |
| <b>Alpha</b>  |                                      | EMS Responders & Capability:  |                                  |                               | EMPF Luer+EMTF Hardesty=Fireline Medics<br>EMPF Perry+EMTF Mjelde= Butte Fire w/ UTV    |    |                        |
|   |                                      | Equipment Available on Scene: |                                  |                               | ALS & BLS Trauma gear, O2, Stokes, UTV  |    |                        |
|   |                                      | Medical Emergency Channel     |                                  |                               | Command/Vipond Park Rptr  |    |                        |
|   |                                      | ETA for Ambulance to Scene:   |                                  |                               |   |    |                        |
|   |                                      | Air:                          |                                  |                               |   |    |                        |
|   |                                      | Ground:                       |                                  |                               |   |    |                        |
|   |                                      | Approved Helispot:            |                                  |                               |   |    |                        |
|   |                                      | Lat:                          |                                  |                               |   |    |                        |
| Long:   |                                      |                               |                                  |                               |   |    |                        |
| <b>Structure</b>  |                                      | EMS Responders & Capability:  |                                  |                               | EMPF Luer + EMTF Hardesty=Fireline Medics<br>EMPF Perry + EMTF Mjelde=Butte Fire w/ UTV |    |                        |
|   |                                      | Equipment Available on Scene: |                                  |                               | ALS and BLS Trauma gear   |    |                        |
|   |                                      | Medical Emergency Channel     |                                  |                               | Command/Vipond Park Rptr  |    |                        |
|   |                                      | ETA for Ambulance to Scene:   |                                  |                               |   |    |                        |
|   |                                      | Air:                          |                                  |                               |   |    |                        |
|   |                                      | Ground:                       |                                  |                               |   |    |                        |
|   |                                      | Approved Helispot:            |                                  |                               | Wise River RD   |    |                        |
|   |                                      | Lat:                          |                                  |                               | N 45. 47.467  |    |                        |
|   |                                      | Long:                         |                                  |                               | W 112. 56. 384  |    |                        |
|   |                                      | Approved Helispot:            |                                  |                               |   |    |                        |
| Lat:  |                                      |                               |                                  |                               |   |    |                        |
| Long:   |                                      |                               |                                  |                               |   |    |                        |
| 8.PREPARED BY (MEDICAL UNIT LEADER)                         |                                      | 9.DATE TIME                   | 10. REVIEWED BY (SAFETY OFFICER) |                               | 11. DATE TIME   |    |                        |
| Dave Poxleitner   |                                      | 8/4 1800                      | Don Garringer                    |                               | 8/4 1800  |    |                        |

# MEDICAL PLAN (ICS 206 WF)

| 6. DIVISION/BRANCH/GROUP             | AREA/LOCATION/CAPABILITY      |                                      |               |
|--------------------------------------|-------------------------------|--------------------------------------|---------------|
| <b>Mike</b>                          | EMS Responders & Capability:  | (Unstaffed)                          |               |
|                                      | Equipment Available on Scene: |                                      |               |
|                                      | Medical Emergency Channel     |                                      |               |
|                                      | ETA for Ambulance to Scene:   |                                      |               |
|                                      | Air:                          |                                      |               |
|                                      | Ground:                       |                                      |               |
|                                      | Approved Helispot:            |                                      |               |
|                                      | Lat:                          |                                      |               |
|                                      | Long:                         |                                      |               |
| <b>Swing/Night</b>                   | EMS Responders & Capability:  | (Crew EMTs are available)            |               |
|                                      | Equipment Available on Scene: | Butte Fire EMPF+EMTF w/ UTV          |               |
|                                      | Medical Emergency Channel     |                                      |               |
|                                      | ETA for Ambulance to Scene:   |                                      |               |
|                                      | Air:                          |                                      |               |
|                                      | Ground:                       |                                      |               |
|                                      | Approved Helispot:            |                                      |               |
|                                      | Lat:                          |                                      |               |
|                                      | Long:                         |                                      |               |
| <b>Whiskey</b>                       | EMS Responders & Capability:  | (Unstaffed)                          |               |
|                                      | Equipment Available on Scene: |                                      |               |
|                                      | Medical Emergency Channel     |                                      |               |
|                                      | ETA for Ambulance to Scene:   |                                      |               |
|                                      | Air:                          |                                      |               |
|                                      | Ground:                       |                                      |               |
|                                      | Approved Helispot:            |                                      |               |
|                                      | Lat:                          |                                      |               |
|                                      | Long:                         |                                      |               |
| <b>Staging</b>                       | EMS Responders & Capability:  | EMPF John Baker, EMPF Becca Wallace  |               |
|                                      | Equipment Available on Scene: | ALS equip, NERV 4x4s, with the EMPFs |               |
|                                      | Medical Emergency Channel     |                                      |               |
|                                      | ETA for Ambulance to Scene:   |                                      |               |
|                                      | Air:                          |                                      |               |
|                                      | Ground:                       |                                      |               |
|                                      | Approved Helispot:            |                                      |               |
|                                      | Lat:                          |                                      |               |
|                                      | Long:                         |                                      |               |
| 8. PREPARED BY (MEDICAL UNIT LEADER) | 9. DATE TIME                  | 10. REVIEWED BY (SAFETY OFFICER)     | 11. DATE TIME |
| Dave Poxleitner                      | 8/4 1800                      | Don Garringer                        | 8/4 1800      |

# MEDICAL PLAN (ICS 206 WF)

Controlled Unclassified Information//Basic

## Medical Incident Report

**FOR A NON-EMERGENCY INCIDENT, WORK THROUGH CHAIN OF COMMAND TO REPORT AND TRANSPORT INJURED PERSONNEL AS NECESSARY.**

**FOR A MEDICAL EMERGENCY: IDENTIFY ON SCENE INCIDENT COMMANDER BY NAME AND POSITION AND ANNOUNCE "MEDICAL EMERGENCY" TO INITIATE RESPONSE FROM IMT COMMUNICATIONS/DISPATCH.**

**Use the following items to communicate situation to communications/dispatch.**

**1. CONTACT COMMUNICATIONS / DISPATCH** (Verify correct frequency prior to starting report)

*Ex: "Communications, Div. Alpha. Stand-by for Emergency Traffic."*

**2. INCIDENT STATUS:** Provide incident summary (including number of patients) and command structure.

*Ex: "Communications, I have a Red priority patient, unconscious, struck by a falling tree. Requesting air ambulance to Forest Road 1 at (Lat./Long.) This will be the Trout Meadow Medical, IC is TFLD Jones. EMT Smith is providing medical care."*

|   |  |   |
|---|--|---|
| Severity of Emergency / Transport Priority        | <input type="checkbox"/> <b>RED / PRIORITY 1 Life or limb threatening injury or illness. Evacuation need is IMMEDIATE</b><br><i>Ex: Unconscious, difficulty breathing, bleeding severely, 2° – 3° burns more than 4 palm sizes, heat stroke, disoriented.</i><br><input type="checkbox"/> <b>YELLOW / PRIORITY 2 Serious Injury or illness. Evacuation may be DELAYED if necessary.</b><br><i>Ex: Significant trauma, unable to walk, 2° – 3° burns not more than 1-3 palm sizes.</i><br><input type="checkbox"/> <b>GREEN / PRIORITY 3 Minor Injury or illness. Non-Emergency transport</b><br><i>Ex: Sprains, strains, minor heat-related illness.</i> |   |
| Nature of Injury or Illness & Mechanism of Injury |  | <i>Brief Summary of Injury or Illness<br/>(Ex: Unconscious, Struck by Falling Tree)</i> |
| Transport Request                                 |  | <i>Air Ambulance / Short Haul/Hoist<br/>Ground Ambulance / Other</i>                    |
| Patient Location                                  |  | <i>Descriptive Location &amp; Lat. / Long. (WGS84)</i>                                  |
| Incident Name                                     |  | <i>Geographic Name + "Medical"<br/>(Ex: Trout Meadow Medical)</i>                       |
| On-Scene Incident Commander                       |  | <i>Name of on-scene IC of Incident within an Incident (Ex: TFLD Jones)</i>              |
| Patient Care                                      |  | <i>Name of Care Provider<br/>(Ex: EMT Smith)</i>  |

**3. INITIAL PATIENT ASSESSMENT:** Complete this section for each patient as applicable (start with the most severe patient)

Patient Assessment: See IRPG page 106

Treatment:

**4. TRANSPORT PLAN:**

Evacuation Location (if different): (Descriptive Location (drop point, intersection, etc.) or Lat. / Long.) Patient's ETA to Evacuation Location:

Helispot / Extraction Site Size and Hazards:

**5. ADDITIONAL RESOURCES / EQUIPMENT NEEDS:**

*Example: Paramedic/EMT, Crews, Immobilization Devices, AED, Oxygen, Trauma Bag, IV/Fluid(s), Splints, Rope rescue, Wheeled litter, HAZMAT, Extrication*

**6. COMMUNICATIONS: Identify State Air/Ground EMS Frequencies and Hospital Contacts as applicable**

| Function    | Channel Name/Number | Receive (RX) | Tone/NAC * | Transmit (TX) | Tone/NAC * |
|-------------|---------------------|--------------|------------|---------------|------------|
| COMMAND     |                     |              |            |               |            |
| AIR-TO-GRND |                     |              |            |               |            |
| TACTICAL    |                     |              |            |               |            |

**7. CONTINGENCY: Considerations:** If primary options fail, what actions can be implemented in conjunction with primary evacuation method? Be thinking ahead.

**8. ADDITIONAL INFORMATION:** Updates/Changes, etc.

**REMEMBER:** Confirm ETA's of resources ordered. Act according to your level of training. Be Alert. Keep Calm. Think Clearly. Act Decisively.