

Grouse Fire



Tuesday August 6th Day Operations 0600-2230

Public Information Officer (PIO) Terina Hill 406-924-3831

BRIEFING 0700

Weed Wash 0700—1900

Showers 0500—1200 & 1400—2200

Meals 0500—0900 & 1830--2130

P1R4SM24 (0102)

MT-BDF-246327



Check-in, Maps, Finance Email

INCIDENT OBJECTIVES	1. Incident Name	2. Date Prepared	3. Time
	GROUSE FIRE	August 5, 2024	1900

4. Operational Period: August 6, 2024 Day Operations 0600-2230

Leaders Intent

- Risk management tools will be used to evaluate planned actions to provide an acceptable level of risk vs. reward between the risk to critical values and risk to responders.

Incident Objectives

- Address the safety of firefighters, aviation and public through clear communication towards completion of objectives.
- Use a full suppression strategy with a combination of direct, indirect, and point zone protection tactics where reasonable to protect the identified critical values at risk.
- Develop contingency plans that identify locations and specific actions to be taken in the event the fire threatens or moves significantly towards the Pioneer Scenic By-way, Jerked Prairie, or Hwy 43.
- Coordinate with the Forest Archaeologist regarding cultural resources within the vicinity of the incident.
- Continue to ensure timely and accurate information is provided to the public including the DNRC, BLM, partners and stakeholders impacted by the fire regarding closure areas and other ongoing activities related to the Grouse Fire.

8. Attachments (X if attached)

<input checked="" type="checkbox"/>	ICS 203	<input checked="" type="checkbox"/>	ICS 205 Incident Radio Comm Plan		Division Supply Order Form
<input checked="" type="checkbox"/>	Incident Weather Forecast		Fire Information Message		NR Chainsaw Parts Order Form
	Fire Behavior Forecast		Resource Advisor Message	<input checked="" type="checkbox"/>	Incident Map
<input checked="" type="checkbox"/>	Safety Message		Human Resource	<input checked="" type="checkbox"/>	ICS 206 Medical Plan
<input checked="" type="checkbox"/>	ICS 204 Division Assignment Lists	<input checked="" type="checkbox"/>	Training Message	<input checked="" type="checkbox"/>	ICS 214 Activity Log
<input checked="" type="checkbox"/>	ICS 220 Air Operations Summary	<input checked="" type="checkbox"/>	Finance Message	<input checked="" type="checkbox"/>	Medical Incident Report – 8 Line

9. Prepared by SITL
Katie Bonogofsky (T)

9. Approved by (Incident Commander)
Caleb Under 8-5-24

ORGANIZATION ASSIGNMENT LIST		9. Operations Section	
1. Incident Name Grouse Fire MT-BDF-246327		Line Ops Planning Ops	Greg Campbell Jesse Myers
		a. Branch I - Divisions/Groups	
2. Date August 5, 2024	3. Time 1900	Branch Director	
4. Operational Period August 6, 2024 Day Operations 0600—2230		Division A	Brian Gorwitz Tyson Luicer (T)
5. Incident Commander and Staff		Division M	Jerod Russell; Trevor Buchanon (T); Donovan Suko (T)
		Division W	Mike King; Matt Delaney (T)
		STRUCTURE	Mike Gustafson; Evan Burke (T)
Incident Commander	Richard Griffin Caleb Olander (T)	STAGING	
Safety Officer	Donald Garringer		
Information Officer	Michelle Peterson	b. Branch II - Divisions/Groups	
Liaison Officer		Branch Director	
6. Agency Representatives		Division/Group	
Agency	Name	Division/Group	
BDNF	Antone Brennick; Kristen Thompson (T)	Division/Group	
Resource Advisors	Ayme Swartz	c. Branch III - Divisions/Groups	
7. Planning Section			
Chief	Kurt Wetzstein		
Resources Unit			
SCKN	Ashley Dettmann (T)		
Situation Unit	Paul Smith (T); Katie Bonogofsky (T)		
Demobilization Unit	Russ Walker (T)		
Documentation Unit		c. Air Operations Branch	
GISS	RIST	Air Operations	
IMET		Air Attack	
SOPL		FAO Acting	Bert Smith
FBAN		Helicopter Coord	
HRSP		Helibase Manager	
LTAN		Air Tanker Coord	
ITSS		10. Finance Section	
Air Quality		Chief	Arden Ward
8. Logistics Section		Personnel Time	Victoria Davis (T)
Planning Logistics	Lawrence Falcon; Liz Carver	Personnel Time	Ashley Johnson (T)
Supply Unit/RCDM	Jennie Jennings (T)	Equipment Time	Tammy Carter (T)
Ordering Manager	Beth Youngstrom	Comp/Claims Unit	
Ground Support		Cost Unit	
Food Unit			
Medical Unit	David Poxleitner; Alicia Tanrath (T)	Prepared by SITL (T)	
Communication Unit (RADO)	Erin Waldman		
Security Unit	Kevin Arnold		
Facilities Unit	Paul Kipling		
Base Camp Manager	Toby Aberle; David broch		

Fire Weather Forecast:

.DISCUSSION...Near critical fire weather will be present on Tuesday due to Min RHs and gusty winds. Additionally, an isolated dry thunderstorm will be possible producing gusty and erratic outflow winds. Wednesday winds decrease as does instability, lowering the threat of a shower or thunderstorm.

.TUESDAY...

- * Sky/Weather.....Partly cloudy. Chance of showers and thunderstorms in the afternoon.
- * CWR (> 0.10 Inch)... 10 percent.
- * Chance Lightning....30 percent.
- * LAL.....3.
- * Max Temperature.....72-77.
- * Min Humidity.....19-24 percent.
- * Wind (20 ft).....Southwest 6-14 mph. Gusts up to 25 mph in the afternoon.
- * Mixing Height.....500 ft agl increasing to 11000 ft agl.
- * Mixing Winds.....Southwest 20 mph.
- * Haines Index.....4 low.
- * Precip Amount.....0.03 inches.

.TUESDAY NIGHT...

- * Sky/Weather.....Partly cloudy. Slight chance of showers and thunderstorms in the evening.
- * CWR (> 0.10 Inch)... 10 percent.
- * Chance Lightning....20 percent.
- * LAL.....2.
- * Min Temperature.....47-52.
- * Max Humidity.....64-69 percent.
- * Wind (20 ft).....West 6-14 mph. Gusts up to 25 mph in the evening becoming north and decreasing to 4-8 mph.
- * Mixing Height.....6500 ft agl decreasing to less than 100 ft agl early in the evening.
- * Mixing Winds.....Northwest 10 mph.
- * Precip Amount.....0.01 inches.

.WEDNESDAY...

- * Sky/Weather.....Partly cloudy. Chance of rain showers and slight chance of thunderstorms in the afternoon.
- * CWR (> 0.10 Inch)... 10 percent.
- * Chance Lightning....20 percent.
- * LAL.....2.
- * Max Temperature.....67-72.
- * Min Humidity.....19-24 percent.
- * Wind (20 ft).....Northwest 5-10 mph.
- * Mixing Height.....1500 ft agl increasing to 10000 ft agl.
- * Mixing Winds.....West 10 mph.
- * Haines Index.....4 low.
- * Precip Amount.....0.01 inches.

HEALTH AND SAFETY MESSAGE

SAFETY** starts with **YOU

We are **ALL** accountable for **SAFE** behaviors

INCIDENT: Grouse Creek

DATE: 8/6/24

Operational Period: 0600-2230

Major Hazards and Risks: Complacency • Same Daily Routine

The sense of urgency has started to decline, and things may begin to slow down

The same hazards exist!

You are still working under hazard trees and snags, rolling rocks and debris, operating chainsaws, driving narrow roads, and working in the proximity of heavy equipment.

When shifting down keep up your Situational Awareness!

There is still work to get accomplished and lots of hazards to be heads up for.

Remain focused on the task at hand

*A lot of tasks have been accomplished safely on this incident so **Stay Engaged** and do not let your guard down!*

Don't forget to Look Up, Look Down, and Look Around.

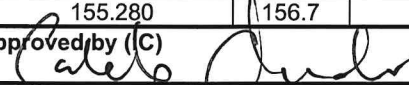
Environmental Conditions and Hazard Tree Indicators

- Strong winds – gusty winds
- Diseased or bug killed trees
- Trees and duff have been burned for an extended period
- High-risk tree species (rot and shallow root system)
- Numerous downed trees
- Dead or broken tops or limbs overhead
- Accumulation of downed limbs
- Absence of needles, bark or limbs (AKA: snag)
- Leaning or hung-up trees
- Roots damaged by equipment or erosion

**IF YOU ARE ON THE LINE
KNOW HOW TO OPERATE IF THERE IS A
MEDICAL EMERGENCY!**

- Where is the closest EMT or first responder?
- Do you know the correct frequencies?
- Who do you contact and with what information?
- Patient assessment?
- Where is the closest evacuation route to where you are working?
- Do you have a contingency plan?
- Ground transport or air?
- Are you thinking ahead?
- Acting according to your level of training?
- Refer to IRPG page 105-119 Emergency Medical Care Guidelines, Pink Pages.

Don Garringer, Safety Officer

ASSIGNMENT LIST			1.Branch		2. Division/Group		DIVISION A	
3. Incident Name			4. Operational Period:					
Grouse Creek Fire			Date: August 6, 2024			Time: 0600-2230		
5. Operations Personnel								
Line Operations		Greg Campbell		Division Supervisor		Brian Gorwitz		
Planning Operations		Jesse Myers				Tyson Luicer (T)		
Air Operations				Safety		Donald Garringer		
6. Resources Assigned This Period								
Strike Team/Task Force/ Resource Designator	Last Shift	Leader	No. Pers.		Trans. Neede	Drop Off PT./Time	Pick Up PT./Time	
(C-01) CRW1 Bonneville IHC	8/14	Evans	22		N	0600/ICP	2230	
(C-10) CRW1 Flathead IHC	8/15	Borgen	25		N	0600/ICP	2230	
(C-09) CRW2 Lava	8/14	Trujillo	20		N	0600/ICP	2230	
(C-07) CRW2 West Coast Reforestation	8/14	Martinez	20		N	0600/ICP	2230	
(C-11) Great Northern	8/19	Buckly	21		N	0600/ICP	2230	
(E-28) ENG6-CNF-612	8/7	Lehmen	6		N	0600/ICP	2230	
(E-46) ENG6-Butte fire w/UTV	8/12	Facincani	2		N	0600/ICP	2230	
(E-35) ENG6-Castle Mountain	8/15	Welch	3		N	0600/ICP	2230	
7. Control Operations								
Task – Hold and control completed line along Pettengill creek along 186 road and north along hwy 73.								
Purpose – Secure fire to the north of Pettengill creek.								
End State – Fire stays to the north of Pettengill.								
8. Special Instructions:								
-Utilize UAS PSD to minimize fire severity during firing operation.								
-AMBO staged at DP-40, available to whole incident.								
-Butte Fire in Alpha has 1 paramedic and 1 EMT.								
9. Division/Group Communication Summary								
Function	Frequency - RX	Frequency - TX	TX Tone	RX Tone	Chann	Comments		
Dillon Dispatch	173.08750	165.72500	103.5		1	Tone guard number 8 (103.5).		
R1 SOA RPT	173.1875	164.38750	136.5	136.5	2			
TACTICAL 1	168.05000	168.05000	156.7		3			
MUTUAL AID	154.07000	154.07000	156.7		6			
A/G PRIMARY	168.52500	168.52500			9			
A/G SECONDARY	169.81250	169.81250			10			
MEDICAL A/G	155.34000	155.34000	156.7		11			
Air Guard	168.62500	168.62500	110.9		12			
Ground Medical	155.280	155.280	156.7		13			
Prepared by SITL Katie Bonogofsky (T)			Approved by (IC) 		Date 8/5/24			

ASSIGNMENT LIST	1.Branch	2. Division/Group DIVISION M
------------------------	----------	-------------------------------------

3. Incident Name Grouse Creek Fire	4. Operational Period:6 Date: August 6, 2024 Time: 0600-2230
--	--

5. Operations Personnel			
Line Operations	Greg Campbell	Division Supervisor	Jerod Russell;
Planning Operations	Jesse Myers		Trevor Buchanon (T); Donovan Suko (T)
Air Operations		Safety	Donald Garringer

6. Resources Assigned This Period							
Strike Team/Task Force/ Resource Designator	Last Shift	Leader	No. Pers.		Trans. Neede	Drop Off PT./Time	Pick Up PT./Time
(E-57) Cahoon Contracting LLC	8/19	Mattson	3		N	0600/ICP	2230
HEQB	8/19	Williams	2		N	0600/ICP	2230

7. Control Operations Task – Scout line from Division Alpha/Mike break to Harriett Lou Creek. Purpose – To identify control features to lessen the fires impact to the scenic byway. End State – Fire stays west of scenic byway.
--

8. Special Instructions: -AMBO staged at DP-40, available to whole incident. -Butte Fire in Alpha has 1 paramedic and 1 EMT.

9. Division/Group Communication Summary						
Function	Frequency - RX	Frequency - TX	TX Tone	RX Tone	Chann	Comments
Dillon Dispatch	173.08750	165.72500	103.5		1	Tone guard number 8 (103.5).
R1 SOA RPT	173.1875	164.38750	136.5	136.5	2	
TACTICAL 4	166.725	166.725			15	
MUTUAL AID	154.07000	154.07000	156.7		6	
A/G PRIMARY	168.52500	168.52500			9	
A/G SECONDARY	169.81250	169.81250			10	
MEDICAL A/G	155.34000	155.34000	156.7		11	
Air Guard	168.62500	168.62500	110.9		12	
Ground Medical	155.280	155.280	156.7		13	

Prepared by SITL Katie Bonogofsky (T)	Approved by (IC) 	Date 8/5/24	Time 1900
--	----------------------	----------------	--------------

ASSIGNMENT LIST	1.Branch	2. Division/Group DIVISION W
------------------------	----------	-------------------------------------

3. Incident Name Grouse Creek Fire	4. Operational Period:6 Date: August 6, 2024 Time: 0600-2230
--	---

5. Operations Personnel			
Line Operations	Greg Campbell	Division Supervisor	Mike King;
Planning Operations	Jesse Myers		Matt Delaney (T)
Air Operations		Safety	Donald Garringer

6. Resources Assigned This Period							
Strike Team/Task Force/ Resource Designator	Last Shift	Leader	No. Pers.		Trans. Neede	Drop Off PT./Time	Pick Up PT./Time
(C-12) Greyback 2B	8/19		20		N	0600/ICP	2230
(E-52) ENG6-MT-BDF-71	8/18	Larsen	8		N	0600/ICP	2230
(O-56) Falling Mod	8/16	Clifford	2		N	0600/ICP	2230

7. Control Operations
<p>Task – Scout line south of Division Alpha/Whiskey break along Pettengill Creek to Reservoir Creek.</p> <p>Purpose – Look for opportunities to engage the fire as it approaches Pettengill Creek.</p> <p>End State – To keep fire north of Pettengill Creek.</p>

8. Special Instructions:
<p>-AMBO staged at DP-40, available to whole incident.</p> <p>-Butte Fire in Alpha has 1 paramedic and 1 EMT.</p>

9. Division/Group Communication Summary						
Function	Frequency - RX	Frequency - TX	TX Tone	RX Tone	Chann	Comments
Dillon Dispatch	173.08750	165.72500	103.5		1	Tone guard number 8 (103.5).
R1 SOA RPT	173.1875	164.38750	136.5	136.5	2	
TACTICAL 1	168.05000	168.05000	156.7		3	
MUTUAL AID	154.07000	154.07000	156.7		6	
A/G PRIMARY	168.52500	168.52500			9	
A/G SECONDARY	169.81250	169.81250			10	
MEDICAL A/G	155.34000	155.34000	156.7		11	
Air Guard	168.62500	168.62500	110.9		12	
Ground Medical	155.280	155.280	156.7		13	

Prepared by SITL Katie Bonogofsky (T)	Approved by (IC) <i>[Signature]</i>	Date 8/5/24	Time 1900
--	--	----------------	--------------

<h1>ASSIGNMENT LIST</h1>	1.Branch	2. Division/Group Zulu
--------------------------	----------	-------------------------------

3. Incident Name Grouse Creek Fire	4. Operational Period: Date: August 6, 2024 Time: 0600-2230
--	--

5. Operations Personnel			
Line Operations	Greg Campbell	Division Supervisor	Unstaffed
Planning Operations	Jesse Myers		
Air Operations		Safety	

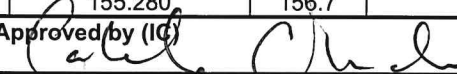
6. Resources Assigned This Period							
Strike Team/Task Force/ Resource Designator	Last Shift	Leader	No. Pers.		Trans. Neede	Drop Off PT./Time	Pick Up PT./Time

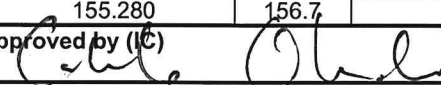
7. Control Operations
Task – Secure structures on 186 road and continue to monitor for hot spots.
Purpose – Protect structures and stop fire impact to structures in Pettengill.
End State – Private property and structures protected.

8. Special Instructions:
-AMBO staged at DP-40, available to whole incident.
-Butte Fire in Alpha has 1 paramedic and 1 EMT.

9. Division/Group Communication Summary						
Function	Frequency - RX	Frequency - TX	TX Tone	RX Tone	Chann	Comments
Dillon Dispatch	173.08750	165.72500	103.5		1	Tone guard number 8 (103.5).
R1 SOA RPT	173.1875	164.38750	103.5	136.5	2	
TACTICAL 2	168.20000	168.20000	156.7		4	
MUTUAL AID	154.07000	154.07000	156.7		6	
A/G PRIMARY	168.52500	168.52500			9	
A/G SECONDAR	169.81250	169.81250			10	
MEDICAL A/G	155.34000	155.34000			11	
Air Guard	168.62500	168.62500	110.9	110.9	12	
Ground Medical	155.280	155.280	156.7		13	

Prepared by SITL Katie Bonogofsky (T)	Approved by (IC) <i>[Signature]</i>	Date 8/5/24	Time 1900
--	--	----------------	--------------


ASSIGNMENT LIST			1.Branch		2. Division/Group			STRUCTURE	
3. Incident Name			4. Operational Period:						
Grouse Creek Fire			Date: August 6, 2024			Time: 0600-2230			
5. Operations Personnel									
Line Operations		Greg Campbell		Division Supervisor		Mike Gustafson;			
Planning Operations		Jesse Myers				Evan Burke (T);			
						Fernando Quiroga (T)			
Air Operations				Safety		Donald Garringer			
6. Resources Assigned This Period									
Strike Team/Task Force/ Resource Designator		Last Shift	Leader	No. Pers.		Trans. Neede	Drop Off PT./Time	Pick Up PT./Time	
(E-02) ENG6 Greywolf		8/13	Grant	3		N	0600/ICP	2230	
(E-37) ENG6 Whitegrass Fire		8/16	Whitegrass	3		N	0600/ICP	2230	
(E-69) ENG6 1315		8/14	Klanecky	3		N	0600/ICP	2230	
(E-13) Water tender-Blacktail		8/10	Smith	1		N	0600/ICP	2230	
7. Control Operations									
Task – Secure structures on 186 road and continue to monitor for hot spots.									
Purpose – Protect structures and stop fire impact to structures in Pettengill.									
End State – Private property and structures protected.									
8. Special Instructions:									
-AMBO staged at DP-40, available to whole incident.									
-Butte Fire in Alpha has 1 paramedic and 1 EMT.									
9. Division/Group Communication Summary									
Function	Frequency - RX	Frequency - TX	TX Tone	RX Tone	Chann	Comments			
Dillon Dispatch	173.08750	165.72500	103.5		1	Tone guard number 8 (103.5).			
R1 SOA RPT	173.1875	164.38750	103.5	136.5	2				
TACTICAL 3	168.60000	168.60000	156.7		5				
MUTUAL AID	154.07000	154.07000	156.7		6				
A/G PRIMARY	168.52500	168.52500			9				
A/G SECONDAR	169.81250	169.81250			10				
MEDICAL A/G	155.34000	155.34000			11				
Air Guard	168.62500	168.62500	110.9	110.9	12				
Ground Medical	155.280	155.280	156.7		13				
Prepared by SITL Katie Bonogofsky (T)		Approved by (IC) 			Date				8/5/24

ASSIGNMENT LIST				1.Branch		2. Division/Group		STAGING		
3. Incident Name				4. Operational Period:6						
Grouse Creek Fire				Date: August 6, 2024		Time: 0600-2230				
5. Operations Personnel										
Line Operations		Greg Campbell			Division Supervisor					
Planning Operations		Jesse Myers								
Air Operations					Safety			Donald Garringer		
6. Resources Assigned This Period										
Strike Team/Task Force/ Resource Designator		Last Shift	Leader		No. Pers.	Trans. Needs	Drop Off PT./Time		Pick Up PT./Time	
(E-09) SKG1-Bigfoot		8/11	Spencer		2	N	0600/ICP		2230	
(E-42) SKG1-RT Logging LLC		8/16	Thompson		2	N	0600/ICP		2230	
(E-43) Dozer-CC Stacking		8/16	Cornell		2	N	0600/ICP		2230	
(E-61) FEL1 DSJR Trucking					1	N	0600/ICP		2230	
(E-62) FEL1 DSJR Trucking					1	N	0600/ICP		2230	
(O-58) EMPF		8/18	Becca Wallace		1	N	0600/ICP		2230	
(O-59) EMPF		8/18	John Baker		1	N	0600/ICP		2230	
7. Control Operations										
Task – Be available to all divisions upon requests.										
Purpose – To support all divisions.										
End State – All divisions are supported.										
8. Special Instructions: Report to Planning Ops for morning in-briefing.										
-AMBO staged at DP-40, available to whole incident.										
-Butte Fire in Alpha has 1 paramedic and 1 EMT.										
9. Division/Group Communication Summary										
Function	Frequency - RX		Frequency - TX		TX Tone	RX Tone	Chann	Comments		
Dillon Dispatch	173.08750		165.72500		103.5		1	Tone guard number 8 (103.5).		
R1 SOA RPT	173.1875		164.38750		136.5	136.5	2			
TACTICAL 1	168.05000		168.05000		156.7		3			
MUTUAL AID	154.07000		154.07000		156.7		6			
A/G PRIMARY	168.52500		168.52500				9			
A/G SECONDARY	169.81250		169.81250				10			
MEDICAL A/G	155.34000		155.34000		156.7		11			
Air Guard	168.62500		168.62500		110.9		12			
Ground Medical	155.280		155.280		156.7		13			
Prepared by SITL Katie Bonogofsky (T)			Approved by (IC) 			Date 8/5/24				

ASSIGNMENT LIST			1.Branch		2. Division/Group Mudd Creek		
3. Incident Name Grouse Creek Fire			4. Operational Period:6 Date: August 6, 2024 Time: 0600-2230				
5. Operations Personnel							
Line Operations Planning Operations		Greg Campbell Jesse Myers		Division Supervisor		Ryan henneger	
Air Operations		Safety		Donald Garringer			
6. Resources Assigned This Period							
Strike Team/Task Force/ Resource Designator		Last Shift	Leader	No. Pers.	Trans. Neede	Drop Off PT./Time	Pick Up PT./Time
(E-36) ENG6 Bakken		8/16	Bakken	3	N	0600/ICP	2230
(E-33) ENG6-C&C Cougar Fire Co.		8/14	Reilly	3	N	0600/ICP	2230
7. Control Operations							
Task – Be available to all divisions upon requests.							
Purpose – To support all divisions.							
End State – All divisions are supported.							
8. Special Instructions: Report to Planning Ops for morning in-briefing.							
-AMBO staged at DP-40, available to whole incident. -Butte Fire in Alpha has 1 paramedic and 1 EMT.							
9. Division/Group Communication Summary							
Function	Frequency - RX	Frequency - TX	TX Tone	RX Tone	Chann	Comments Tone guard number 8 (103.5).	
Dillon Dispatch	173.08750	165.72500	103.5		1		
R1 SOA RPT	173.1875	164.38750	136.5	136.5	2		
TACTICAL 1	168.05000	168.05000	156.7		3		
MUTUAL AID	154.07000	154.07000	156.7		6		
A/G PRIMARY	168.52500	168.52500			9		
A/G SECONDARY	169.81250	169.81250			10		
MEDICAL A/G	155.34000	155.34000	156.7		11		
Air Guard	168.62500	168.62500	110.9		12		
Ground Medical	155.280	155.280	156.7		13		
Prepared by SITL Katie Bonogofsky (T)		Approved by (IC) <i>[Signature]</i>		Date 8/5/24	Time 1900		

AIR OPERATIONS SUMMARY		Prepared By:	Bert Smith	Prepared Date:	8/5/2024	Prepared Time:	15:00				
1. INCIDENT NAME: B-D IA/Support		2. Operational Date: August 6, 2024		Start Time: 900		3. Butte Sunset: 20:53	Butte Pumpkin: 21:23				
4. Remarks Safety Notes, Hazards, Air ops Mission plan for density altitude (DA) and windy conditions Report any unauthorized/UAS activity Wash bucket, if moving between dipsites over Contentinal Divide. Offer constructive feedback to pilots during tactical operations Status current at time of report. Changes occur constantly.		5. Medevac Aircraft: Order through dispatch Life Flight ALS 800-232-0911 4MA Litter Capable WR Helibase 8MG CMH Short Haul Missoula				6. TFRs: 4/9355 Grouse 11500' MSL 120.100 4/2588 Johnson 12000' MSL 118.725 (BRF) 4/1257 Hughes 13000' MSL 119.575 (BRF)					
7. Personnel:		Phone #		8. Frequencies:		AM		FM		9. Fixed-Wing GACC:	
B-D FAO	Bert Smith	406-660-7371		Nat. Flight Follow				168.6500 Rx/Tx Tn 110.9		Air Tankers/SEATS: Order through dispatch	
ASGS Grouse	Bert Smith			Grouse A/G Primary				168.5250			
Butte HEBM	Bert Smith			Grouse A/G Secondary				169.8125			
Dillon Dispatch	Aircraft Desk	406-683-3939		Grouse A/A TFR		120.100				Lead Plane/ASM: Order through dispatch	
				Grouse A/A Rotor		124.600					
				IA A/G 29				166.9000			
				IA A/G 26				166.6875			
44MA	Nick Plovanic	406-366-0179		IA A/A Primary		119.625				Air Attack: Order through dispatch	
				IA A/A Secondary		134.150					
5GE	Rich Reneau	406-493-5799		VMED 28 (TAN)				155.340 Tx Tn 156.7			
				Medical WHITE				155.280 Tx Tn 156.7		Helicopters GACC: Order through dispatch	
1HT	Cory Dutton	530-306-4589		DNRC A/G Yellow				151.2200		T1 Avail GACC Lend/Lease	
2AC	Jerrid Silva	406-381-5963		DNRC A/G Orange				151.4000			
2AJ	Brenden Mullan	406-560-2395									
OPJ	Ricky Cox										
										SMJK GACC: Order through dispatch	
HELICOPTERS/UAS											
FAA N#	Call Sign	Make/Model	Type	Base	Available	Remarks					
N144MA	4MA	Bell 407HP	3	WRH	930	Forest IA/Support					
N205GE	5GE	UH-1H	2	KBTM	930	Restricted/Forest IA/Support					
N721HT	1HT	UH-1H	1	KBTM	Unavailable	Tanked					
N172AC	2AC	S-64	1	KBTM	930	Tanked					
N562AJ	2AJ	CH-47	1	KBTM	930	Tanked					
N810PJ	OPJ	UH-60A	1	KBTM	930	Bucket					
UAS T3	UR-31	Alta X	3	Grouse	TBD	PSD/IR					
UAS T3	UR-32	Alta X	3	Grouse	TBD	PSD/IR					
Notes/Remarks											
Flight follow through appropriate dispatch until contact has been made on the incident. Then flight follow local.											
Cost Summaries bertram.smith@usda.gov											

ICS 205 - INCIDENT RADIO COMMUNICATIONS PLAN

1. Incident Name: GROUSE Incident Channels		2. Date/Time Prepared Date: 8/5/24 Time: 1900		3. Operational Period: Date From: 08/6/24 Date To: 08/6/24 Time From: 0600 Time To: 2230					
4. Communications									
Ch#	Function	Name	Assigned To	Rx Freq	Rx Tone	Tx Freq	Tx Tone	Mode	Notes
1	DILLON DISPATCH	VIPOND PARK	All Divisions	173.08750		165.72500	103.5	A	Tone guard number 8 (103.5).
2	TACTICAL RPT	R1 SOA RPT	All Divisions	173.1875	136.5	164.38750	136.5	A	
3	TACTICAL	TAC 1	DIV A	168.05000		168.05000	156.7	A	
4	TACTICAL	TAC 2	DIV M/W	168.20000		168.20000	156.7	A	
5	TACTICAL	TAC 3	STRUCTURE GROUP	168.60000		168.60000	156.7	A	
6	MUTUAL AID	RED	All Divisions	154.07000		154.07000	156.7	A	
7	MUTUAL AID	MAROON	UNASSIGNED	154.28000		154.28000	156.7	A	
8	MUTUAL AID	GOLD	UNASSIGNED	153.90500		153.90500	156.7	A	
9	A/G PRIMARY	A/G 1	All Divisions	168.52500		168.52500		A	
10	A/G SECONDARY	A/G 2	All Divisions	169.81250		169.81250		A	
11	MEDICAL A/G	VMET 28 (TAN)	All Divisions	155.34000		155.34000	156.7	A	
12	Air Guard	Air Guard	All Divisions	168.62500	110.9	168.62500	110.9	A	
13	Ground Medical	White	All Divisions	155.280		155.280	156.7	A	
15	TACTICAL	TAC 4	M	166.725		166.725		A	
16									
17									
18									
19									
5. Special Instructions									
6. Prepared by: Katie Bonogofsky SITL (T)				Signature: 		Date/Time: 8-4-24			
ICS 205 - CONTROLLED UNCLASSIFIED INFORMATION/BASIC				MMS IAP					

Virtual FINANCE

E-mail all CTRs to:
2024.grouse.finance@firenet.gov

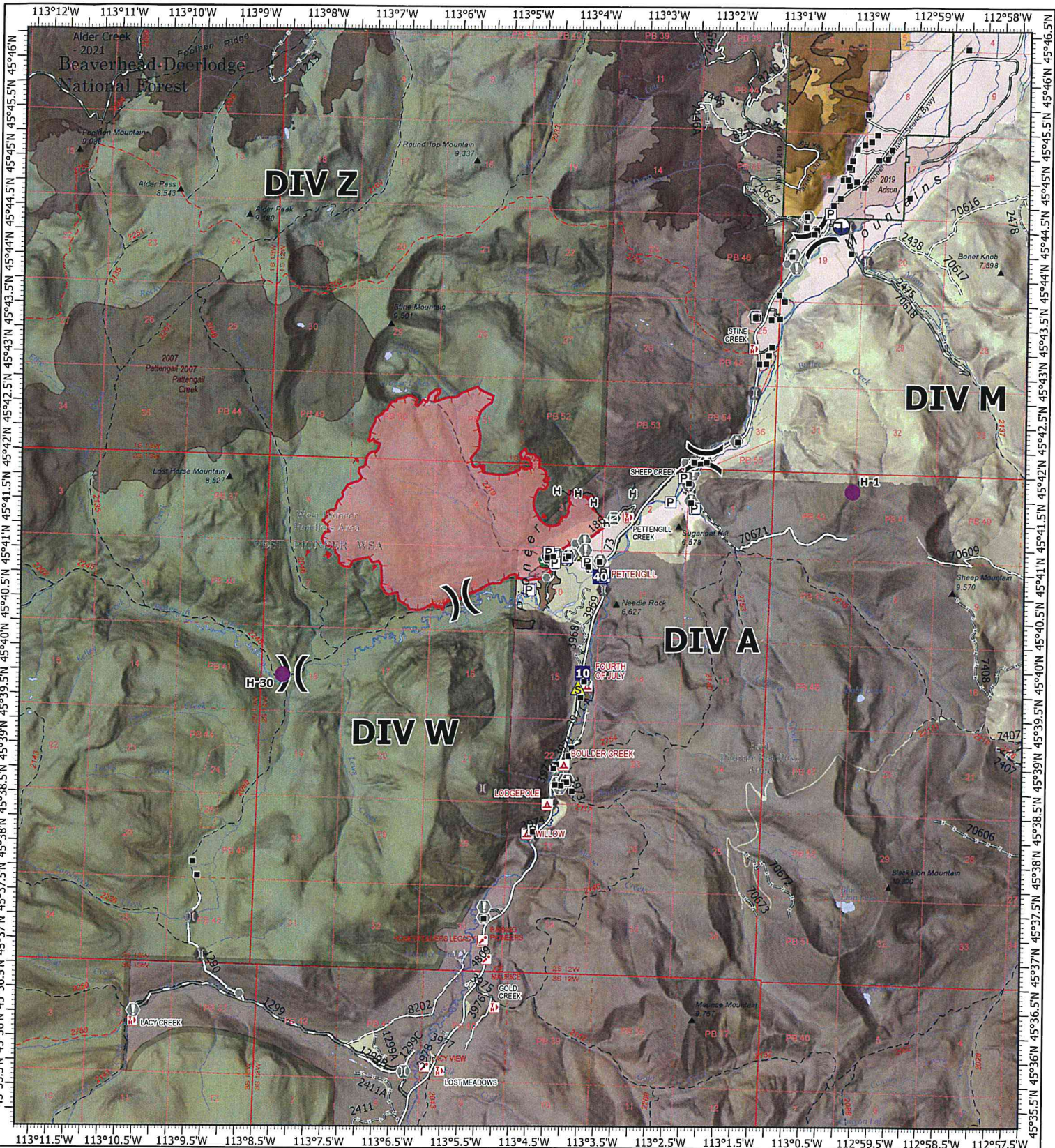
Arden Ward:
575-342-2044

DEMOB LIST:

LWD-8/5 Demob 8/6

O-11 Don Garringer
O-24 Ashley Dettmann
O-23 Randy Rector
E-3.1 Joe Luer
E-3.2 Chris Hardesty
C-8 AJC#4
C-5 New York
A1.1UAR3
A1.3 UAR3

- See Planning tent for checkout sheet.
- Call Finance at 575-342-2044.
- Get all CTRs or Shift Tickets in early. Contract resources make sure you have an evaluation.
- WEED WASH!!! Located at 64800 MT-43, Wise River.



IAP

Grouse

MT-BDF-246327

08/06/2024 Day

3,006 acres at 08/05/2024 @ 1210 MDT

0 0.250.5 1 1.5 2

Miles

1:100,000 | RIST 2024 | 8/5/2024 1844

IAA Flight

North American 1983 Datum. LatLong Grid



Wildfire Daily Fire Perimeter	Other	Road, high clearance
Uncontained	Gate	FS Closed Road
Structure	Bridge	Infrastructure Bridge EDW Deck Type
Completed Hand Line	Culvert	USFS Roadless Areas
Access Route	Safety Zone	FS Wilderness Study Area Boundary
Other	Draft Site	Forest Service Land
Helispot	Road	Bureau of Land Management Lands
Division Break	Road, Dirt/Gravel	Interagency Fire Perimeter History Since 2004
Drop Point	Road, Paved	Interagency Fuels Treatments
Value at Risk	Road, Dirt/Gravel	Alder Creek 2021



Grouse Fire Incident Within an Incident: Emergency Action Plan

LEADERS INTENT - To provide efficient patient care and facilitate rapid transport to definitive care. In the case of a serious accident requiring patient transport to a medical facility:

- The IWI commander will be established at the incident scene.
- The closest ranking Operations Leader will proceed to the IWI site and assist if necessary.
- Use the 8-line protocol to assess patient; if patient evaluation is either Red or Yellow, use **VIPOND PARK frequency (Command) 173.08750 RX, 165.72500 TX, tone 103.5 on TX** to **contact Dillon Dispatch to initiate medical IWI.** If patient assessment is Green, contact Fireline supervision for incident medical personnel to respond.
- IWI Commander has authority to request from Dillon Dispatch Life-Flight Helicopter and/or ALS Ambulance along with incident medical personnel.
- If patient assessment is Red, IWI Commander is encouraged to activate multiple transport options. IWI Commander will utilize appropriate option for patient transport to definitive care.
- For extraction forest aircraft, utilize Air to Ground Primary (**168.52500 RX/TX**). If using an air ambulance, use TAN (155.3400 RX/TX) to communicate with air ambulance.
- If incident should occur outside the Grouse Fire Incident, contact 911 and Dillon Dispatch on **VIPOND PARK frequency (Command) 173.08750 RX, 165.72500 TX, tone 103.5 on TX** for monitoring and support and to notify whether patient is incident personnel or civilian.
- Patients evaluated as Green notify nearest supervisor of the location of the incident and assigned EMT to determine treatment and transport.
- Upon notification of a serious accident, the following will report to nearest radio: Incident Commander and Operations Section Chief.
- Incident radio traffic on **VIPOND PARK frequency (Command) 173.08750 RX, 165.72500 TX, tone 103.5 on TX** will be monitored by the Dillon Interagency Dispatch Center.

Approved by: /s/ Caleb Olander, Incident Commander (T)
Date: 07/31/2024

MEDICAL PLAN (ICS 206)

MEDICAL PLAN ICS 206	1. INCIDENT NAME Grouse	2. DATE PREPARED 8/5/2024	3. TIME PREPARED 1600	4. OPERATIONAL PERIOD 8/6/2024 0600-0600
-------------------------	--------------------------------	----------------------------------	------------------------------	---

5. INCIDENT MEDICAL AID STATIONS

MEDICAL AID STATIONS	LOCATION	PARAMEDICS	
		YES	NO
*ICP Medical Unit	*Wise River Airport Base camp (not fully ALS staffed)	*X	

6. TRANSPORTATION

A. AIR AMBULANCES

NAME	LOCATION	PHONE	PARAMEDICS	
			YES	NO
Lifeflight Network	Butte, Bozeman, mult bases	800-232-0911	X	
Helena Short Haul	Helena, MT	Air Ops		X
Medflight- Billings	Billings, MT	406-255-8441	X	

B. GROUND AMBULANCES

NAME	LOCATION	PARAMEDICS	
		YES	NO
A1 Ambulance Service	Butte, MT	X	
Anaconda Ambulance	Anaconda, MT	X	
Fireline Medics Ambulance	DP-40	X	

7. HOSPITALS

NAME	ADDRESS	TRAVEL TIME		PHONE	HELIPAD	
		AIR	GROUND		YES	NO
		St. James Healthcare	400 S. Clark Butte, MT		10min	50min
St. Patrick Hospital	500 W. Broadway St. Missoula, MT	60min	2.5hr	406-748-3600	X	
Community Hosp of Anaconda	401 W. Pennsylvania St. Anaconda MT	10	60 min	406-563-8500	X	
St. Vincent Regional	1233 N 30th St, Billings, MT	60 min	4 hr 15	406-657-7000	X	

8. MEDICAL EMERGENCY PROCEDURES

<p style="text-align: center;"><u>LINE "MEDICAL-EMERGENCY" PLAN:</u></p> <p>Reporting Party to contact Dillon Dispatch on Vipond with:</p> <ul style="list-style-type: none"> * Patient Complaint, Condition and Location via Tactical or Command Frequency. *Red, Yellow & Green Patients Trigger Incident Within Incident (IWI) *Refer to IWI plan in this IAP.* * The highest qualified responder will run "Medical-Emergency" on the assigned frequency assuming the role of IWI IC. *IWI IC will use "Medical Incident Report" worksheet in the IAP or IRPG. * Dispatch contacts Medical Unit Leader on the assigned frequency or cell phone. 	<p style="text-align: center;"><u>Medical Unit Contacts:</u></p> <p>Anita Parkin MEDL 406-382-0136</p> <p>Alicia Tanrath MEDL (t) 406-493-7043</p> <p>Dave Poxleitner MEDL LWD8/7 208-983-6059</p> <p style="text-align: center;"><u>IN CAMP</u></p> <p>MEDL first, then "FM Ambo", or "Butte Fire", nights</p> <p>*Contact MEDL as soon as possible. Can escalate to Dispatch or 911 if needed or urgent.</p>
ICS 206 WF	9. PREPARED BY: (Medical Unit Leader) MEDL Dave Poxleitner
10. REVIEWED BY: (Safety Officer) Don Garringer	

MEDICAL PLAN (ICS 206 WF)

1. INCIDENT/PROJECT NAME								
Grouse				Date/Time:		8/6/2024 0600-0600		
3. AMBULANCE SERVICES								
NAME	COMPLETE ADDRESS	PHONE	PARAMEDICS					
			YES	NO				
A1 Ambulance	507 Centennial Ave, Butte, MT	406-490-3130	X					
Jefferson Valley EMS	203 W. Legion Ave, Whitehall, MT	406-346-2715	X					
4. AIR AMBULANCE SERVICES								
NAME	PHONE	TYPE OF AIRCRAFT/CAPABILITY						
Lifeflight Network	800-232-0911	Bell 407						
Helena Short Haul	Dillon Disp, AirDesk 406-683-3939	AS 350 B3						
Medflight-Billings, MT	406-255-8411	EC-145						
NAME AND COMPLETE ADDRESS	GPS DATUM-WGS 84 COORDINATE STANDARD		TRAVEL TIME		PHONE	HELIPAD		FACILITY LEVEL OF CARE
	LAT:	LONG:	AIR	GROUND		YES	NO	
St. James Healthcare 400 S.Clark St., Butte,MT	N 46-00.542500	W 112-32.6623	10min	50min	406-723-2585	X		Level 3
	VHF:							
St. Patrick Hospital 500 W.Broadway St, Missoula	N 46-52.527333	W 113-59.9865	60min	2.5hr	406-748-3600	X		Level 2
	VHF:							
Community Hosp of Anaconda 401 W. Pennsylvania St., Ana.	N 46-7.93	W 112-57.43	10	60 min	406-563-8500	X		Critical Access
	VHF:							
St. Vincent Regional 1027 N. 27th St., Billings,MT	N 45-47.626667	W 108-31.1150	60 min	3 hrs 20 mins	406-657-7000	X		Level 1
	VHF:							
6. DIVISION/BRANCH/GROUP			AREA/LOCATION/CAPABILITY					
Alpha			EMS Responders & Capability:		EMPF Luer+EMTF Hardesty=Fireline Medics EMPF Perry+EMTF Facincani= Butte Fire w/ UTV			
			Equipment Available on Scene:		ALS & BLS Trauma gear, O2, Stokes, UTV			
			Medical Emergency Channel		Command/Vipond Park Rptr			
			ETA for Ambulance to Scene:					
			Air:					
			Ground:					
			Approved Helispot:					
			Lat:					
			Long:					
			Structure			EMS Responders & Capability:		EMPF Luer + EMTF Hardesty=Fireline Medics EMPF Perry + EMTF Facincani=Butte Fire w/ UTV
Equipment Available on Scene:		ALS and BLS Trauma gear						
Medical Emergency Channel		Command/Vipond Park Rptr						
ETA for Ambulance to Scene:								
Air:								
Ground:								
Approved Helispot:		Wise River RD						
Lat:		N 45. 47.467						
Long:		W 112. 56. 384						
Approved Helispot:								
Lat:								
Long:								
8.PREPARED BY (MEDICAL UNIT LEADER)				9.DATE TIME	10. REVIEWED BY (SAFETY OFFICER)		11. DATE TIME	
Dave Poxleitner				8/5 1800	Don Garringer		8/5 1800	

MEDICAL PLAN (ICS 206 WF)

6. DIVISION/BRANCH/GROUP	AREA/LOCATION/CAPABILITY		
Mike	EMS Responders & Capability:	(Unstaffed)	
	Equipment Available on Scene:		
	Medical Emergency Channel		
	ETA for Ambulance to Scene:		
	Air:		
	Ground:		
	Approved Helispot:		
	Lat:		
	Long:		
Staging	EMS Responders & Capability:	EMPF Becca Wallace, EMPF John Baker	
	Equipment Available on Scene:	ALS Med equip, 4x4s with the EMPFs	
	Medical Emergency Channel		
	ETA for Ambulance to Scene:		
	Air:		
	Ground:		
	Approved Helispot:		
	Lat:		
	Long:		
Whiskey	EMS Responders & Capability:	(Unstaffed)	
	Equipment Available on Scene:		
	Medical Emergency Channel		
	ETA for Ambulance to Scene:		
	Air:		
	Ground:		
	Approved Helispot:		
	Lat:		
	Long:		
Zulu	EMS Responders & Capability:	(Unstaffed)	
	Equipment Available on Scene:		
	Medical Emergency Channel		
	ETA for Ambulance to Scene:		
	Air:		
	Ground:		
	Approved Helispot:		
	Lat:		
	Long:		
8. PREPARED BY (MEDICAL UNIT LEADER)	9. DATE TIME	10. REVIEWED BY (SAFETY OFFICER)	11. DATE TIME
Dave Poxleitner	8/5 1800	Don Garringer	8/5 1800

MEDICAL PLAN (ICS 206 WF)

Controlled Unclassified Information//Basic

Medical Incident Report

FOR A NON-EMERGENCY INCIDENT, WORK THROUGH CHAIN OF COMMAND TO REPORT AND TRANSPORT INJURED PERSONNEL AS NECESSARY.

FOR A MEDICAL EMERGENCY: IDENTIFY ON SCENE INCIDENT COMMANDER BY NAME AND POSITION AND ANNOUNCE "MEDICAL EMERGENCY" TO INITIATE RESPONSE FROM IMT COMMUNICATIONS/DISPATCH.

Use the following items to communicate situation to communications/dispatch.

1. CONTACT COMMUNICATIONS / DISPATCH (Verify correct frequency prior to starting report)

Ex: "Communications, Div. Alpha. Stand-by for Emergency Traffic."

2. INCIDENT STATUS: Provide incident summary (including number of patients) and command structure.

Ex: "Communications, I have a Red priority patient, unconscious, struck by a falling tree. Requesting air ambulance to Forest Road 1 at (Lat./Long.) This will be the Trout Meadow Medical, IC is TFLD Jones. EMT Smith is providing medical care."

Severity of Emergency / Transport Priority	<input type="checkbox"/> RED / PRIORITY 1 Life or limb threatening injury or illness. Evacuation need is IMMEDIATE <i>Ex: Unconscious, difficulty breathing, bleeding severely, 2° – 3° burns more than 4 palm sizes, heat stroke, disoriented.</i> <input type="checkbox"/> YELLOW / PRIORITY 2 Serious Injury or illness. Evacuation may be DELAYED if necessary. <i>Ex: Significant trauma, unable to walk, 2° – 3° burns not more than 1-3 palm sizes.</i> <input type="checkbox"/> GREEN / PRIORITY 3 Minor Injury or illness. Non-Emergency transport <i>Ex: Sprains, strains, minor heat-related illness.</i>	
Nature of Injury or Illness & Mechanism of Injury		Brief Summary of Injury or Illness <i>(Ex: Unconscious, Struck by Falling Tree)</i>
Transport Request		Air Ambulance / Short Haul/Hoist Ground Ambulance / Other
Patient Location		Descriptive Location & Lat. / Long. (WGS84)
Incident Name		Geographic Name + "Medical" <i>(Ex: Trout Meadow Medical)</i>
On-Scene Incident Commander		Name of on-scene IC of Incident within an Incident <i>(Ex: TFLD Jones)</i>
Patient Care		Name of Care Provider <i>(Ex: EMT Smith)</i>

3. INITIAL PATIENT ASSESSMENT: Complete this section for each patient as applicable (start with the most severe patient)

Patient Assessment: See IRPG page 106

Treatment:

4. TRANSPORT PLAN:

Evacuation Location (if different): (Descriptive Location (drop point, intersection, etc.) or Lat. / Long.) Patient's ETA to Evacuation Location:

Helispot / Extraction Site Size and Hazards:

5. ADDITIONAL RESOURCES / EQUIPMENT NEEDS:

Example: Paramedic/EMT, Crews, Immobilization Devices, AED, Oxygen, Trauma Bag, IV/Fluid(s), Splints, Rope rescue, Wheeled litter, HAZMAT, Extrication

6. COMMUNICATIONS: Identify State Air/Ground EMS Frequencies and Hospital Contacts as applicable

Function	Channel Name/Number	Receive (RX)	Tone/NAC *	Transmit (TX)	Tone/NAC *
COMMAND					
AIR-TO-GRND					
TACTICAL					

7. CONTINGENCY: Considerations: If primary options fail, what actions can be implemented in conjunction with primary evacuation method? Be thinking ahead.

8. ADDITIONAL INFORMATION: Updates/Changes, etc.

REMEMBER: Confirm ETA's of resources ordered. Act according to your level of training. Be Alert. Keep Calm. Think Clearly. Act Decisively.