

# Grouse Fire



**Wednesday August 7th**  
**Day Operations 0600-2230**

\*\*\*Public Information Officer (PIO) Terina Hill 406-924-3831\*\*\*

**BRIEFING 0700**  
**Weed Wash 0700—1900**  
**Showers 0500—1200 & 1400—2200**  
**Meals 0500—0900 & 1830—2130**

P1R4SM24 (0102)

MT-BDF-246327



Check-in, Maps, Finance Email

<b>INCIDENT OBJECTIVES</b>	<b>1. Incident Name</b> <b>GROUSE FIRE</b>	<b>2. Date Prepared</b> <b>August 6, 2024</b>	<b>3. Time</b> <b>1900</b>
----------------------------	---	--	-------------------------------

4. Operational Period: **August 7, 2024 Day Operations 0600-2230**

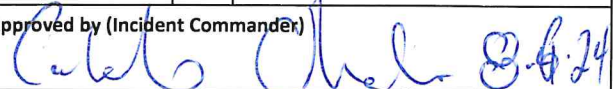
Leaders Intent

- Risk management tools will be used to evaluate planned actions to provide an acceptable level of risk vs. reward between the risk to critical values and risk to responders.

Incident Objectives

- Address the safety of firefighters, aviation and public through clear communication towards completion of objectives.
- Use a full suppression strategy with a combination of direct, indirect, and point zone protection tactics where reasonable to protect the identified critical values at risk.
- Develop contingency plans that identify locations and specific actions to be taken in the event the fire threatens or moves significantly towards the Pioneer Scenic By-way, Jerked Prairie, or Hwy 43.
- Coordinate with the Forest Archaeologist regarding cultural resources within the vicinity of the incident.
- Continue to ensure timely and accurate information is provided to the public including the DNRC, BLM, partners and stakeholders impacted by the fire regarding closure areas and other ongoing activities related to the Grouse Fire.

8. Attachments (X if attached)					
<input checked="" type="checkbox"/>	ICS 203	<input checked="" type="checkbox"/>	ICS 205 Incident Radio Comm Plan		Division Supply Order Form
<input checked="" type="checkbox"/>	Incident Weather Forecast		Fire Information Message		NR Chainsaw Parts Order Form
	Fire Behavior Forecast	<input checked="" type="checkbox"/>	Resource Advisor Message	<input checked="" type="checkbox"/>	Incident Map
<input checked="" type="checkbox"/>	Safety Message		Human Resource	<input checked="" type="checkbox"/>	ICS 206 Medical Plan
<input checked="" type="checkbox"/>	ICS 204 Division Assignment Lists	<input checked="" type="checkbox"/>	Training Message	<input checked="" type="checkbox"/>	ICS 214 Activity Log
<input checked="" type="checkbox"/>	ICS 220 Air Operations Summary	<input checked="" type="checkbox"/>	Finance Message	<input checked="" type="checkbox"/>	Medical Incident Report – 8 Line

<b>9. Prepared by SITL</b> Katie Bonogofsky (T)	<b>9. Approved by (Incident Commander)</b> 
--	--

ORGANIZATION ASSIGNMENT LIST		9. Operations Section	
1. Incident Name  <b>Grouse Fire MT-BDF-246327</b>		Line Ops	Greg Campbell Jesse Myers
		Planning Ops	
		<b>a. Branch I - Divisions/Groups</b>	
2. Date August 6, 2024	3. Time 1900	<b>Division A</b>	Brian Gorwitz; Tyson Luicer (T); Donovan Suko (T)
4. Operational Period <b>August 7, 2024 Day Operations 0600—2230</b>		<b>Division M</b>	Jerod Russell; Trevor Buchanon (T);
5. Incident Commander and Staff		<b>Division W</b>	Mike King; Matt Delaney (T)
		<b>Division Z</b>	Unstaffed
		<b>STRUCTURE</b>	Mike Gustafson; Evan Burke (T)
		<b>STAGING</b>	
Incident Commander	Richard Griffin Caleb Olander (T)	<b>IA</b>	Jerod Russell Nate Decker (T)
Safety Officer	Don Hammack	<b>Mudd Creek</b>	Unstaffed
Information Officer	Terina Hill	<b>b. Branch II - Divisions/Groups</b>	
Liaison Officer		Branch Director	
<b>6. Agency Representatives</b>		Division/Group	
Agency	Name	Division/Group	
BDNF	Antone Brennick; Kristen Thompson (T)	Division/Group	
Resource Advisor	Ayme Swartz	<b>c. Branch III - Divisions/Groups</b>	
<b>7. Planning Section</b>			
Chief	Kurt Wetzstein		
Resources Unit	Katie Bonogofsky (T)		
SCKN			
Situation Unit	Paul Smith (T)		
Demobilization Unit	Russ Walker (T)		
Documentation Unit		<b>c. Air Operations Branch</b>	
GISS	RIST	Air Operations	
IMET		Air Attack	
SOPL		FAO	Bert Smith
FBAN		Helicopter Coord	
HRSP		Helibase Manager	
LTAN		Air Tanker Coord	
ITSS		<b>10. Finance Section</b>	
Air Quality		Chief	Arden Ward
<b>8. Logistics Section</b>		Personnel Time	Victoria Davis (T)
Planning Logistics	Lawrence Falcon; Liz Carver	Personnel Time	Ashley Johnson (T)
Supply Unit/RCDM	Jennie Jennings (T)	Equipment Time	Tammy Carter (T)
Ordering Manager	Beth Youngstrom	Comp/Claims Unit	
Ground Support		Cost Unit	
Medical Unit	Anita Parkin; Alicia Tanrath (T)	Prepared by SITL (T)	
Communication Unit (RADO)	Erin Waldman		
Security Unit	Kevin Arnold		
Facilities Unit	Paul Kipling		
Base Camp Manager	Toby Aberle; David broch		



**Fire Weather Forecast:**

.DISCUSSION...Although a morning shower is possible, it is unlikely. During the afternoon thunderstorms will develop and track southeast after 1300. These storms will be capable of erratic outflow gusts up to 35 mph.

.WEDNESDAY...

\*Sky/Weather-Partly cloudy. Haze. Slight chance of rain showers in the morning. Slight chance of thunderstorms in the afternoon.

- \* CWR (> 0.10 Inch)...10 percent.
- \* Chance Lightning....20 percent.
- \* LAL.....2.
- \* Max Temperature.....62-67.
- \* Min Humidity.....22-27 percent.
- \* Wind (20 ft).....Northwest 8-12 mph.
- \* Mixing Height.....2500 ft agl increasing to 9000 ft agl.
- \* Mixing Winds.....West 10 mph.
- \* Haines Index.....4 low.
- \* Precip Amount.....0.03 inches.

.WEDNESDAY NIGHT...

\* Sky/Weather.....Partly cloudy. Haze in the evening. Slight chance of showers and thunderstorms in the evening.

- \* CWR (> 0.10 Inch)...10 percent.
- \* Chance Lightning....20 percent.
- \* LAL.....2.
- \* Min Temperature.....41-46.
- \* Max Humidity.....86-91 percent.
- \* Wind (20 ft).....Northeast 6-12 mph.
- \* Mixing Height.....6000 ft agl decreasing to less than 100 ft agl early in the evening.
- \* Mixing Winds.....Northeast 10 mph.
- \* Precip Amount.....0.01 inches.

.THURSDAY...

\* Sky/Weather.....Mostly cloudy. Slight chance of showers and thunderstorms in the afternoon.

- \* CWR (> 0.10 Inch)...10 percent.
- \* Chance Lightning....15 percent.
- \* LAL.....2.
- \* Max Temperature.....58-63.
- \* Min Humidity.....40-45 percent.
- \* Wind (20 ft).....East 6-10 mph.
- \* Mixing Height.....2500 ft agl increasing to 6000 ft agl in the afternoon.
- \* Mixing Winds.....Southwest 15 mph.
- \* Haines Index.....3 very low.
- \* Precip Amount.....0.01 inches.



## **HEALTH AND SAFETY MESSAGE**

***SAFETY*** starts with ***YOU***

We are **ALL** accountable for **SAFE** behaviors

---

INCIDENT: Grouse Creek

DATE: 8/7/24

Operational Period: 0600-2230

---

**Today's Message:** Normalization of Deviance

---

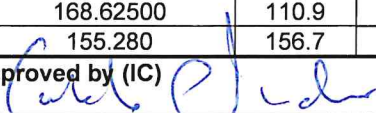
"Normalization of Deviance." This concept was developed by Diane Vaughan in her exceptional study of the space shuttle Challenger accident. Mullane stressed the need to guard against the insidious effect of this concept.

Normalization of deviance is a phenomenon by which individuals, groups or organizations come to accept a lower standard of performance until that lower standard becomes the "norm" for them. This phenomenon usually occurs when individuals, groups or organizations are under pressure to meet schedule requirements, conform to budgetary considerations or deliver on a promise, while adhering to expected standards or prescribed procedures. Faced with a situation in which relaxing the standards or procedures gets the "job done," they decide to utilize lower standards or less robust procedures with the expectation that when things get back to "normal," they will go back to utilizing the higher standards or procedures.

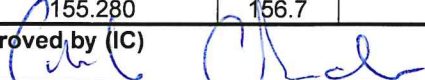
Generally, the problem is resolved and, to their relief, with no adverse effect. However, the pressures do not seem to abate, and the lower standard may be used again. Every time this is done successfully, it becomes easier to do it the next time. The successful use of the lower standard over time is perceived as somehow an acceptable substitute for the original standard and, therefore, becomes the norm or the "new" standard for performance. As a result, the individual, group or organization stops seeing its action as deviant.

**Grouse Fire Safety Team**

---

ASSIGNMENT LIST				1.Branch		2. Division/Group		DIVISION A		
3. Incident Name				4. Operational Period:						
Grouse Creek Fire				Date: August 7, 2024		Time: 0600-2230				
5. Operations Personnel										
Line Operations		Greg Campbell			Division Supervisor			Brian Gorwitz; Tyson Luicer (T)		
Planning Operations		Jesse Myers								
Air Operations					Safety			Don Hammack		
6. Resources Assigned This Period										
Strike Team/Task Force/ Resource Designator	Last Shift	Leader	No. Pers.		Trans. Neede	Drop Off PT./Time	Pick Up PT./Time			
(C-01) CRW1 Bonneville IHC	8/14	Evans	22		N	0600/ICP	2230			
(C-10) CRW1 Flathead IHC	8/15	Borgen	25		N	0600/ICP	2230			
(C-09) CRW2 Lava	8/14	Trujillo	20		N	0600/ICP	2230			
(C-07) CRW2 West Coast Reforestation	8/14	Martinez	20		N	0600/ICP	2230			
(E-33) ENG6-C&C Cougar Fire Co.	8/14	Reilly	3		N	0600/ICP	2230			
<b>(E-28) ENG6-CNF-612*</b>	8/7	Lehmen	6		N	0600/ICP	2230			
(E-46) ENG6-Butte fire w/UTV	8/12	Facincani	2		N	0600/ICP	2230			
(E-53) ENG6 Greywolf	8/16	Perez	3		N	0600/ICP	2230			
(O-58) EMPF	8/16	Wallace	1		N	0600/ICP	2230			
7. Control Operations										
Task – Hold and control completed line along Pettengill creek along 186 road and north along hwy 73.										
Purpose – Secure fire to the north of Pettengill creek.										
End State – Fire stays to the north of Pettengill.										
8. Special Instructions: *Night patrol										
-Utilize UAS PSD to minimize fire severity during firing operation.										
-AMBO staged at DP-40, available to whole incident.										
-Butte Fire in Alpha has 1 paramedic and 1 EMT.										
9. Division/Group Communication Summary										
Function	Frequency - RX	Frequency - TX	TX Tone	RX Tone	Chann	Comments				
Dillon Dispatch	173.08750	165.72500	103.5		1	Tone guard number 8 (103.5).				
R1 SOA RPT	173.1875	164.38750	136.5	136.5	2					
TACTICAL 1	168.05000	168.05000	156.7		3					
MUTUAL AID	154.07000	154.07000	156.7		6					
A/G PRIMARY	168.52500	168.52500			9					
A/G SECONDARY	169.81250	169.81250			10					
MEDICAL A/G	155.34000	155.34000	156.7		11					
Air Guard	168.62500	168.62500	110.9		12					
Ground Medical	155.280	155.280	156.7		13					
Prepared by Resources Unit Katie Bonogofsky (T)			Approved by (IC) 							Date 8/6/24



ASSIGNMENT LIST			1.Branch		2. Division/Group		DIVISION M				
3. Incident Name			4. Operational Period:6								
Grouse Creek Fire			Date: August 7, 2024		Time: 0600-2230						
5. Operations Personnel											
Line Operations		Greg Campbell		Division Supervisor		Jerod Russell; Trevor Buchanon (T); Donovan Suko (T)					
Planning Operations		Jesse Myers									
Air Operations				Safety		Don Hammack					
6. Resources Assigned This Period											
Strike Team/Task Force/ Resource Designator	Last Shift	Leader	No. Pers.		Trans. Neede	Drop Off PT./Time	Pick Up PT./Time				
(C-13) Bitterroot IHC	8/20	Gibbons	20		N	0600/ICP	2230				
(E-57) Cahoon Contracting LLC	8/19	Mattson	3		N	0600/ICP	2230				
(E-61) FEL1	8/19	DSJr Trucking	2		N	0600/ICP	2230				
(E-62) FEL1	8/19	DSJr Trucking	2		N	0600/ICP	2230				
(E-64/65/66) log trucks	8/20	Arke logging	3		N	0600/ICP	2230				
(E-63/71) loader/transport	8/20	Arke logging	2		N	0600/ICP	2230				
(O-133)TFLD	8/18	Ryan Hennager	1		N	0600/ICP	2230				
(O-144)TFLD	8/19	Chris Herricks (T)	1		N	0600/ICP	2230				
(O-19) HEQB	8/19	Williams	2		N	0600/ICP	2230				
(O-59) EMPF	8/18	John Baker	1		N	0600/ICP	2230				
7. Control Operations											
Task – Scout line from Division Alpha/Mike break to Harriett Lou Creek.											
Purpose – To identify control features to lessen the fires impact to the scenic byway.											
End State – Fire stays west of scenic byway.											
8. Special Instructions:											
-AMBO staged at DP-40, available to whole incident.											
-Butte Fire in Alpha has 1 paramedic and 1 EMT.											
9. Division/Group Communication Summary											
Function	Frequency - RX	Frequency - TX	TX Tone	RX Tone	Chann	Comments					
Dillon Dispatch	173.08750	165.72500	103.5		1	Tone guard number 8 (103.5).					
R1 SOA RPT	173.1875	164.38750	136.5	136.5	2						
TACTICAL 4	166.725	166.725			15						
MUTUAL AID	154.07000	154.07000	156.7		6						
A/G PRIMARY	168.52500	168.52500			9						
A/G SECONDARY	169.81250	169.81250			10						
MEDICAL A/G	155.34000	155.34000	156.7		11						
Air Guard	168.62500	168.62500	110.9		12						
Ground Medical	155.280	155.280	156.7		13						
Prepared by Resources Unit		Approved by (IC)			Date				Time		
Katie Bonogofsky (T)					8/6/24				1900		



ASSIGNMENT LIST				1.Branch		2. Division/Group		DIVISION W		
3. Incident Name				4. Operational Period:6						
Grouse Creek Fire				Date: August 7, 2024		Time: 0600-2230				
5. Operations Personnel										
Line Operations		Greg Campbell			Division Supervisor			Mike King; Matt Delaney (T)		
Planning Operations		Jesse Myers								
Air Operations					Safety			Don Hammack		
6. Resources Assigned This Period										
Strike Team/Task Force/ Resource Designator		Last Shift	Leader	No. Pers.		Trans. Neede	Drop Off PT./Time	Pick Up PT./Time		
(C-12) Greyback 2B		8/19	Dougherty	20		N	0600/ICP	2230		
(E-52) ENG6-MT-BDF-71		8/18	Larsen	8		N	0600/ICP	2230		
(O-56) Falling Mod		8/16	Clifford	2		N	0600/ICP	2230		
(O-115) Kaniksu WFM		8/19	Castaldo	12		N	0600/ICP	2230		
TFLD			Rob Dunn	1		N	0600/ICP	2230		
(O-58) EMPF		8/18	Becca Wallace	1		N	0600/ICP	2230		
7. Control Operations										
Task – Scout line south of Division Alpha/Whiskey break along Pettengill Creek to Reservoir Creek.										
Purpose – Look for opportunities to engage the fire as it approaches Pettengill Creek.										
End State – To keep fire north of Pettengill Creek.										
8. Special Instructions:										
-AMBO staged at DP-40, available to whole incident.										
-Butte Fire in Alpha has 1 paramedic and 1 EMT.										
9. Division/Group Communication Summary										
Function	Frequency - RX	Frequency - TX	TX Tone	RX Tone	Chann	Comments				
Dillon Dispatch	173.08750	165.72500	103.5		1	Tone guard number 8 (103.5).				
R1 SOA RPT	173.1875	164.38750	136.5	136.5	2					
TACTICAL 1	168.05000	168.05000	156.7		3					
MUTUAL AID	154.07000	154.07000	156.7		6					
A/G PRIMARY	168.52500	168.52500			9					
A/G SECONDARY	169.81250	169.81250			10					
MEDICAL A/G	155.34000	155.34000	156.7		11					
Air Guard	168.62500	168.62500	110.9		12					
Ground Medical	155.280	155.280	156.7		13					
Prepared by Resources Unit Katie Bonogofsky (T)			Approved by (IC) <i>[Signature]</i>							Date 8/6/24

<b>ASSIGNMENT LIST</b>	1.Branch	2. Division/Group <b>Zulu</b>
------------------------	----------	-------------------------------

3. Incident Name <b>Grouse Creek Fire</b>	4. Operational Period: Date: <b>August 7, 2024</b> Time: <b>0600-2230</b>
--	--

**5. Operations Personnel**

Line Operations	Greg Campbell	Division Supervisor	Unstaffed
Planning Operations	Jesse Myers		
Air Operations		Safety	Don Hammack

**6. Resources Assigned This Period**

Strike Team/Task Force/ Resource Designator	Last Shift	Leader	No. Pers.	Trans. Needs	Drop Off PT./Time	Pick Up PT./Time

**7. Control Operations**

**Task – Secure structures on 186 road and continue to monitor for hot spots.**

**Purpose – Protect structures and stop fire impact to structures in Pettengill.**

**End State – Private property and structures protected.**

**8. Special Instructions:**

-AMBO staged at DP-40, available to whole incident.

-Butte Fire in Alpha has 1 paramedic and 1 EMT.

**9. Division/Group Communication Summary**

Function	Frequency - RX	Frequency - TX	TX Tone	RX Tone	Chann	Comments
Dillon Dispatch	173.08750	165.72500	103.5		1	Tone guard number 8 (103.5).
R1 SOA RPT	173.1875	164.38750	103.5	136.5	2	
TACTICAL 2	168.20000	168.20000	156.7		4	
MUTUAL AID	154.07000	154.07000	156.7		6	
A/G PRIMARY	168.52500	168.52500			9	
A/G SECONDAR	169.81250	169.81250			10	
MEDICAL A/G	155.34000	155.34000			11	
Air Guard	168.62500	168.62500	110.9	110.9	12	
Ground Medical	155.280	155.280	156.7		13	

Prepared by Resources Unit Katie Bonogofsky (T)	Approved by (IC) 	Date 8/6/24	Time 1900
--	----------------------	----------------	--------------

<b>ASSIGNMENT LIST</b>	1.Branch	2. Division/Group	<b>STRUCTURE</b>
------------------------	----------	-------------------	------------------

3. Incident Name <b>Grouse Creek Fire</b>	4. Operational Period: Date: August 7, 2024      Time: 0600-2230
--	---

**5. Operations Personnel**

Line Operations Planning Operations	Greg Campbell Jesse Myers	Division Supervisor	Mike Gustafson; Evan Burke (T); Fernando Quiroga (T)
Air Operations		Safety	Don Hammack

**6. Resources Assigned This Period**

Strike Team/Task Force/ Resource Designator	Last Shift	Leader	No. Pers.	Trans. Neede	Drop Off PT./Time	Pick Up PT./Time
(E-02) ENG6 Greywolf	8/13	Grant	3	N	0600/ICP	2230
(E-37) ENG6 Whitegrass Fire	8/16	Whitegrass	3	N	0600/ICP	2230
(E-69) ENG6 1315	8/14	Klanecky	3	N	0600/ICP	2230
(E-13) Water tender-Blacktail	8/10	Smith	1	N	0600/ICP	2230

**7. Control Operations**

**Task** – Secure structures on 186 road and continue to monitor for hot spots.

**Purpose** – Protect structures and stop fire impact to structures in Pettengill.

**End State** – Private property prepped and structures protected.

**8. Special Instructions:**

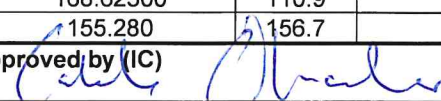
-AMBO staged at DP-40, available to whole incident.  
-Butte Fire in Alpha has 1 paramedic and 1 EMT.

**9. Division/Group Communication Summary**

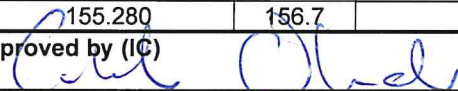
Function	Frequency - RX	Frequency - TX	TX Tone	RX Tone	Chann	Comments
Dillon Dispatch	173.08750	165.72500	103.5		1	Tone guard number 8 (103.5).
R1 SOA RPT	173.1875	164.38750	103.5	136.5	2	
TACTICAL 3	168.60000	168.60000	156.7		5	
MUTUAL AID	154.07000	154.07000	156.7		6	
A/G PRIMARY	168.52500	168.52500			9	
A/G SECONDAR	169.81250	169.81250			10	
MEDICAL A/G	155.34000	155.34000			11	
Air Guard	168.62500	168.62500	110.9	110.9	12	
Ground Medical	155.280	155.280	156.7		13	

Prepared by Resources Unit Katie Bonogofsky (T)	Approved by (IC) 	Date 8/6/24	Time 1900
--	---	----------------	--------------



<b>ASSIGNMENT LIST</b>				1.Branch		2. Division/Group		<b>STAGING</b>		
3. Incident Name <b>Grouse Creek Fire</b>				4. Operational Period:6 Date: August 7, 2024 Time: 0600-2230						
<b>5. Operations Personnel</b>										
Line Operations Planning Operations		Greg Campbell Jesse Myers			Division Supervisor					
Air Operations					Safety			Don Hammack		
<b>6. Resources Assigned This Period</b>										
Strike Team/Task Force/ Resource Designator	Last Shift	Leader	No. Pers.		Trans. Neede	Drop Off PT./Time	Pick Up PT./Time			
(E-09) SKG1-Bigfoot	8/11	Spencer	2		N	0600/ICP	2230			
(E-42) SKG1-RT Logging LLC	8/16	Thompson	2		N	0600/ICP	2230			
(E-43) Dozer-CC Stacking	8/16	Cornell	2		N	0600/ICP	2230			
(E-7) Excavator 2	8/19	Besecker	2		N	0600/ICP	2230			
<b>7. Control Operations</b>										
Task – Be available to all divisions upon requests.										
Purpose – To support all divisions.										
End State – All divisions are supported.										
<b>8. Special Instructions: Report to Planning Ops for morning in-briefing.</b>										
-AMBO staged at DP-40, available to whole incident. -Butte Fire in Alpha has 1 paramedic and 1 EMT.										
<b>9. Division/Group Communication Summary</b>										
Function	Frequency - RX	Frequency - TX	TX Tone	RX Tone	Chann	Comments				
Dillon Dispatch	173.08750	165.72500	103.5		1	Tone guard number 8 (103.5).				
R1 SOA RPT	173.1875	164.38750	136.5	136.5	2					
TACTICAL 1	168.05000	168.05000	156.7		3					
MUTUAL AID	154.07000	154.07000	156.7		6					
A/G PRIMARY	168.52500	168.52500			9					
A/G SECONDARY	169.81250	169.81250			10					
MEDICAL A/G	155.34000	155.34000	156.7		11					
Air Guard	168.62500	168.62500	110.9		12					
Ground Medical	155.280	155.280	156.7		13					
Prepared by Resources Unit Katie Bonogofsky (T)			Approved by (IC) 							Date 8/6/24



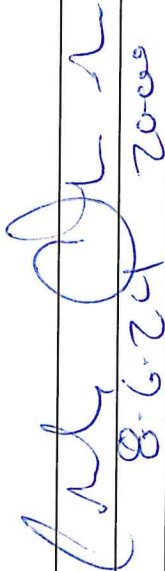
<b>ASSIGNMENT LIST</b>				1.Branch		2. Division/Group <b>IA GROUP</b>			
3. Incident Name <b>Grouse Creek Fire</b>				4. Operational Period:6 Date: August 7, 2024 Time: 0600-2230					
<b>5. Operations Personnel</b>									
Line Operations Planning Operations		Greg Campbell Jesse Myers		Division Supervisor		Jerod Russell Nate Decker (T)			
Air Operations				Safety		Don Hammack			
<b>6. Resources Assigned This Period</b>									
Strike Team/Task Force/ Resource Designator		Last Shift	Leader	No. Pers.		Trans. Neede	Pick Up PT./Time		
(C-11) Great Northern		8/19	Buckly	21		N	2230		
(E-35) ENG6-Castle Mountain		8/15	Welch	3		N	2230		
(E-57) ENG6 Cahoon Contracting		8/19	Mattson	3		N	2230		
<b>7. Control Operations</b>									
Task – Be available to all divisions upon requests.									
Purpose – To support all divisions.									
End State – All divisions are supported.									
<b>8. Special Instructions: Report to Planning Ops for morning in-briefing.</b>									
Remain on assigned DIV. Be available for IA.									
<b>9. Radio Frequencies</b>									
Function	Frequency - RX	Frequency - TX	TX Tone	RX Tone	Chann	Comments			
Dillon Dispatch	173.08750	165.72500	103.5		1	Tone guard number 8 (103.5).			
R1 SOA RPT	173.1875	164.38750	136.5	136.5	2				
TACTICAL 1	168.05000	168.05000	156.7		3				
MUTUAL AID	154.07000	154.07000	156.7		6				
A/G PRIMARY	168.52500	168.52500			9				
A/G SECONDARY	169.81250	169.81250			10				
MEDICAL A/G	155.34000	155.34000	156.7		11				
Air Guard	168.62500	168.62500	110.9		12				
Ground Medical	155.280	155.280	156.7		13				
Prepared by Resources Unit Katie Bonogofsky (T)		Approved by (IC) 			Date 8/6/24			Time 1900	





# ICS 205 - INCIDENT RADIO COMMUNICATIONS PLAN

CONTROLLED UNCLASSIFIED  
INFORMATION/BASIC

<b>1. Incident Name:</b> GROUSE Incident Channels		<b>2. Date/Time Prepared</b> Date: 8/6/24 Time: 1900		<b>3. Operational Period:</b> Date From: 08/7/24 Date To: 08/7/24 Time From: 0600 Time To: 2230					
<b>4. Communications</b>									
Ch#	Function	Name	Assigned To	Rx Freq	Rx Tone	Tx Freq	Tx Tone	Mode	Notes
1	DILLON DISPATCH	VIPOND PARK	All Divisions	173.08750		165.72500	103.5	A	Tone guard number 8 (103.5).
2	TACTICAL RPT	R1 SOA RPT	All Divisions	173.1875	136.5	164.38750	136.5	A	
3	TACTICAL	TAC 1	DIV A	168.05000		168.05000	156.7	A	
4	TACTICAL	TAC 2	DIV M/W	168.20000		168.20000	156.7	A	
5	TACTICAL	TAC 3	STRUCTURE GROUP	168.60000		168.6000	156.7	A	
6	MUTUAL AID	RED	All Divisions	154.07000		154.07000	156.7	A	
7	MUTUAL AID	MAROON	UNASSIGNED	154.28000		154.28000	156.7	A	
8	MUTUAL AID	GOLD	UNASSIGNED	153.90500		153.90500	156.7	A	
9	A/G PRIMARY	A/G 1	All Divisions	168.52500		168.52500		A	
10	A/G SECONDARY	A/G 2	All Divisions	169.81250		169.81250		A	
11	MEDICAL A/G	VMET 28 (TAN)	All Divisions	155.34000		155.34000	156.7	A	
12	Air Guard	Air Guard	All Divisions	168.62500	110.9	168.62500	110.9	A	
13	Ground Medical	White	All Divisions	155.280		155.280	156.7	A	
15	TACTICAL	TAC 4	M	166.725		166.725		A	
16									
17									
18									
19									
<b>5. Special Instructions</b>									
<b>6. Prepared by:</b> Katie Bonogofsky SITL (T)			Signature: 			Date/Time: 8-6-24 20:00			
<b>ICS 205 - CONTROLLED UNCLASSIFIED INFORMATION/BASIC</b>									

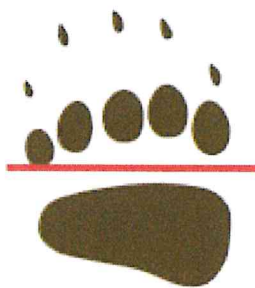
## Resource Advisor Message

Ayme Swartz 406-560-5250

---

**You are in bear country! Bears are attracted to almost any item with odor:**

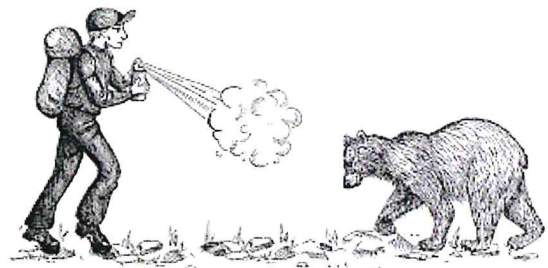
- ✓ Store all attractants inside hard-sided vehicles or other hard-sided structures when they are not being used.
- ✓ Ensure that trash is being collected and that no food is being left unattended in sleeping areas.
- ✓ Bear spray and training are available upon request.



Grizzly bear



Black bear



There have been several confirmed Grizzly bear sightings in the fire area this year.  
Please stay bear aware!



**Grouse Fire**  
**Finance Hotline: 575-342-2044**

Please make sure to check-in upon arriving on incident

IMPORTANT INFORMATION: Grouse Finance is a mix of on-site and virtual staff available to support you and your finance needs. We have established a Finance Hotline to assist you throughout your assignment. Submit your CTRs and Shift tickets electronically. If you have any questions regarding the electronic processes, please reach out to us via the Finance Hotline.

Please submit your Shift Ticket / CTR to [2024.grouse.finance@firenet.gov](mailto:2024.grouse.finance@firenet.gov) using the following format-Email Subject Line: Use the "TIME/Resource Order No./ Resource Name/Position Code" format in the subject line with your information.

(Example: **TIME/O-200/SBear/Safety**)

Email all documents that pertain to your assignment:

Agency Overhead	Agency ADs / EFFs	VIPR Resources	Contract / Agency Crews	Cooperators
Resource Order Crew Time Reports (CTRs)	Resource Order Casual Hire Form CTRs	Resource Order VIPR Agreement Schedule of Items Inspections Shift Tickets	Resource Order Manifest Agreement / Contract Schedule of Items Inspections CTRs	Resource Order Agreement Shift Tickets / CTRs

Please submit Equipment Shift Tickets or Crew Time Reports (CTRs) every other day, at a minimum.

Please **include your email address and phone number** in the body of the email when sending your documents, so that we can easily contact you if there are questions.

**COMP/CLAIMS** - please fill out GM, and OF 289 with signatures, and send into finance as soon as the request is needed. There is a possibility that the request will NOT be approved, but get the forms in ASAP, to properly generate S#'s.

**FOR RESOURCES DEMOBING:**

- Complete and email your final CTR/Shift Ticket as soon as you know your travel time. This form will need to be signed by your supervisor.
- Call the Finance Hotline to verify Finance has everything needed. This step will clear you from Finance to start traveling home. It is still necessary to complete demob with the other functions.
- You will receive your final OF-288 or OF-286 within 48 hours, with instructions if applicable.

**DEMOB LIST**

O-x Name Date Time

## **DEMOB LIST:**

### **Demob 8/7**

E-2

A 20.3

A 20.2

### **LWD 8/7 Demob 8/8**

A 20.4

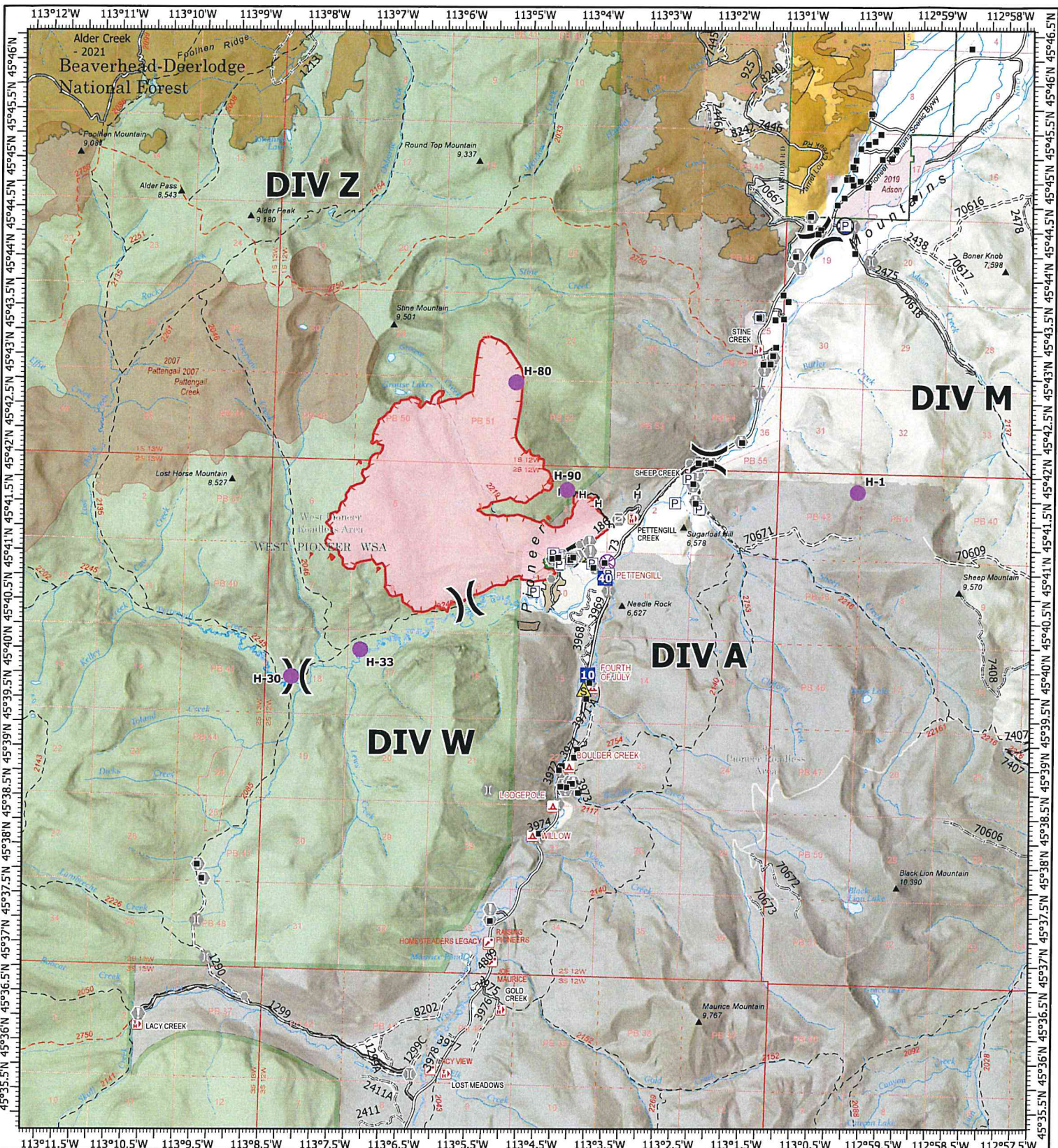
- See Planning tent for checkout sheet.
- Call Finance at 575-342-2044.
- Get all CTRs or Shift Tickets in early. Contract resources make sure you have an evaluation.
- WEED WASH!!! Located at 64800 MT-43, Wise River.

---

## **ORDERING:**

**Please send all orders to [2024.grouse.ordering@firenet.gov](mailto:2024.grouse.ordering@firenet.gov)**





**IAP**  
**Grouse**  
**MT-BDF-246327**  
**08/07/2024 Day**  
 3500 est. acres at 08/06/2024 @ 1900 MDT

Wildfire Daily Fire Perimeter	Value at Risk	Road, high clearance
Contained	Other	FS Closed Road
Uncontained	Gate	Infrastructure Bridge EDW Deck Type
Structure	Bridge	USFS Roadless Areas
Completed Hand Line	Culvert	FS Wilderness Study Area Boundary
Access Route	Safety Zone	Forest Service Land
Other	Draft Site	Bureau of Land Management Lands
Helispot	Road	Interagency Fire Perimeter History Since 2004
UAS Launch and Recovery	Road, Dirt/Gravel	Interagency Fuels Treatments
Division Break	Road, Paved	Alder Creek 2021
Drop Point	Road, Dirt/Gravel	



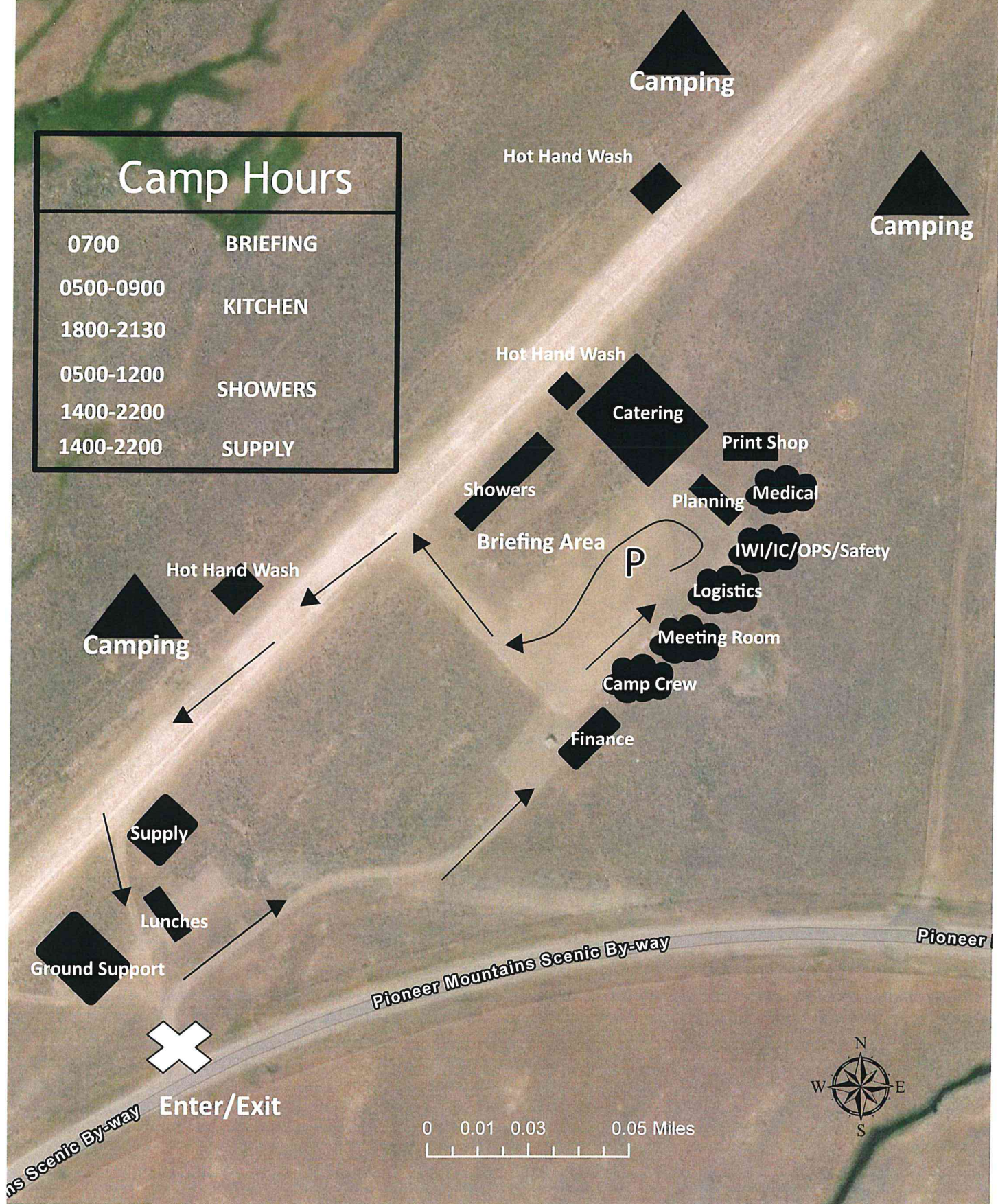
0 0.250.5 1 1.5 2  
 Miles  
 1:100,000 | RIST 2024 | 8/6/2024 1921  
 Hand Sketch  
 North American 1983 Datum, Lat/Long Grid





# 2024 Grouse Fire ICP Site Map MT-BDF-246327

Camp Hours	
0700	BRIEFING
0500-0900	KITCHEN
1800-2130	KITCHEN
0500-1200	SHOWERS
1400-2200	SHOWERS
1400-2200	SUPPLY



0 0.01 0.03 0.05 Miles







## Grouse Fire

### Incident Within an Incident: Emergency Action Plan

LEADERS INTENT - To provide efficient patient care and facilitate rapid transport to definitive care. In the case of a serious accident requiring patient transport to a medical facility:

- The IWI commander will be established at the incident scene.
- The closest ranking Operations Leader will proceed to the IWI site and assist if necessary.
- Use the 8-line protocol to assess patient; if patient evaluation is either Red or Yellow, use **VIPOND PARK frequency (Command) 173.08750 RX, 165.72500 TX, tone 103.5 on TX** to **contact Dillon Dispatch to initiate medical IWI**. If patient assessment is Green, contact Fireline supervision for incident medical personnel to respond.
- IWI Commander has authority to request from Dillon Dispatch Life-Flight Helicopter and/or ALS Ambulance along with incident medical personnel.
- If patient assessment is Red, IWI Commander is encouraged to activate multiple transport options. IWI Commander will utilize appropriate option for patient transport to definitive care.
- For extraction forest aircraft, utilize Air to Ground Primary (**168.52500 RX/TX**). If using an air ambulance, use TAN (155.3400 RX/TX) to communicate with air ambulance.
- If incident should occur outside the Grouse Fire Incident, contact 911 and Dillon Dispatch on **VIPOND PARK frequency (Command) 173.08750 RX, 165.72500 TX, tone 103.5 on TX** for monitoring and support and to notify whether patient is incident personnel or civilian.
- Patients evaluated as Green notify nearest supervisor of the location of the incident and assigned EMT to determine treatment and transport.
- Upon notification of a serious accident, the following will report to nearest radio: Incident Commander and Operations Section Chief.
- Incident radio traffic on **VIPOND PARK frequency (Command) 173.08750 RX, 165.72500 TX, tone 103.5 on TX** will be monitored by the Dillon Interagency Dispatch Center.

Approved by: /s/ Caleb Olander, Incident Commander (T)  
Date: 07/31/2024



# MEDICAL PLAN (ICS 206)

<b>MEDICAL PLAN</b> ICS 206	1. INCIDENT NAME  <p style="text-align: center;">Grouse</p>	2. DATE PREPARED  <p style="text-align: center;">8//2024</p>	3. TIME PREPARED  <p style="text-align: center;">1600</p>	4. OPERATIONAL PERIOD  <p style="text-align: center;">8/7/2024 0600-0600</p>		
<b>5. INCIDENT MEDICAL AID STATIONS</b>						
MEDICAL AID STATIONS	LOCATION	PARAMEDICS				
		YES	NO			
*ICP Medical Unit	*Wise River Airport Base camp (not fully ALS staffed)	*X				
<b>6. TRANSPORTATION</b>						
<b>A. AIR AMBULANCES</b>						
NAME	LOCATION	PHONE	PARAMEDICS			
			YES	NO		
Lifeflight Network	Butte, Bozeman, mult bases	800-232-0911	X			
Helena Short Haul	Helena, MT	Air Ops		X		
Medflight- Billings	Billings, MT	406-255-8441	X			
<b>B. GROUND AMBULANCES</b>						
NAME	LOCATION	PARAMEDICS				
		YES	NO			
A1 Ambulance Service	Butte, MT	X				
Anaconda Ambulance	Anaconda, MT	X				
Fireline Medics Ambulance	DP-40	X				
<b>7. HOSPITALS</b>						
NAME	ADDRESS	TRAVEL TIME		PHONE	HELIPAD	
		AIR	GROUND		YES	NO
St. James Healthcare	400 S. Clark Butte, MT	10min	50min	406-723-2585	X	
St. Patrick Hospital	500 W. Broadway St. Missoula, MT	60min	2.5hr	406-748-3600	X	
Community Hosp of Anaconda	401 W. Pennsylvania St. Anaconda MT	10	60 min	406-563-8500	X	
St. Vincent Regional	1233 N 30th St, Billings, MT	60 min	4 hr 15	406-657-7000	X	
<b>8. MEDICAL EMERGENCY PROCEDURES</b>						
<p style="text-align: center;"><b><u>LINE "MEDICAL-EMERGENCY" PLAN:</u></b></p> <p><b>Reporting Party</b> to contact Dillon Dispatch on Vipond with:</p> <ul style="list-style-type: none"> <li>* Patient Complaint, Condition and Location via Tactical or Command Frequency.</li> <li>*<b>Red, Yellow &amp; Green</b> Patients Trigger Incident Within Incident (IWI) *Refer to IWI plan in this IAP.*</li> <li>* The highest qualified responder will run "<b>Medical-Emergency</b>" on the assigned frequency assuming the role of IWI IC.</li> <li>*IWI IC will use "<b>Medical Incident Report</b>" worksheet in the IAP or IRPG.</li> <li>* Dispatch contacts Medical Unit Leader on the assigned frequency or cell phone.</li> </ul>				<p style="text-align: center;"><b><u>Medical Unit Contacts:</u></b></p> <p>Anita Parkin MEDL                      406-382-0136</p> <p>Alicia Tanrath MEDL (t)                406-493-7043</p> <p style="text-align: center;"><b><u>IN CAMP</u></b></p> <p>MEDL first, then "FM Ambo", or "Butte Fire", nights</p> <p>*Contact MEDL as soon as possible. Can escalate to Dispatch or 911 if needed or urgent.</p>		
<b>ICS 206 WF</b>	9. PREPARED BY: (Medical Unit Leader) MEDL  Anita Parkin		10. REVIEWED BY: (Safety Officer)  Don Hammack			

# MEDICAL PLAN (ICS 206 WF)

1. INCIDENT/PROJECT NAME								
Grouse				Date/Time: 8/6/2024 0600-0600				
3. AMBULANCE SERVICES								
NAME	COMPLETE ADDRESS	PHONE	PARAMEDICS					
			YES	NO				
A1 Ambulance	507 Centennial Ave, Butte, MT	406-490-3130	X					
Jefferson Valley EMS	203 W. Legion Ave, Whitehall, MT	406-346-2715	X					
4. AIR AMBULANCE SERVICES								
NAME	PHONE	TYPE OF AIRCRAFT/CAPABILITY						
Lifeflight Network	800-232-0911	Bell 407						
Helena Short Haul	Dillon Disp, AirDesk 406-683-3939	AS 350 B3						
Medflight-Billings, MT	406-255-8411	EC-145						
NAME AND COMPLETE ADDRESS	GPS DATUM-WGS 84 COORDINATE STANDARD		TRAVEL TIME		PHONE	HELIPAD		FACILITY LEVEL OF CARE
	LAT:	LONG:	AIR	GROUND		YES	NO	
St. James Healthcare 400 S.Clark St., Butte,MT	N 46-00.542500	W 112-32.6623	10min	50min	406-723-2585	X		Level 3
	VHF:							
	LAT: N 46-52.527333	LONG: W 113-59.9865						
St. Patrick Hospital 500 W.Broadway St, Missoula	N 46-52.527333	W 113-59.9865	60min	2.5hr	406-748-3600	X		Level 2
	VHF:							
	LAT: N 46-7.93	LONG: W 112-57.43						
Community Hosp of Anaconda 401 W. Pennsylvania St., Ana.	N 46-7.93	W 112-57.43	10	60 min	406-563-8500	X		Critical Access
	VHF:							
	LAT: N 45-47.626667	LONG: W 108-31.1150						
St. Vincent Regional 1027 N. 27th St., Billings,MT	N 45-47.626667	W 108-31.1150	60 min	3 hrs 20 mins	406-657-7000	X		Level 1
	VHF:							
6. DIVISION/BRANCH/GROUP			AREA/LOCATION/CAPABILITY					
<b>Alpha</b>			EMS Responders & Capability:		EMPF Ellis + EMTF Wiesen = Fireline Medics EMPF Perry+EMTF Facincani= Butte Fire w/ UTV			
			Equipment Available on Scene:		ALS & BLS Trauma gear, O2, Stokes, UTV			
			Medical Emergency Channel		Command/Vipond Park Rptr			
			ETA for Ambulance to Scene:					
			Air:					
			Ground:					
			Approved Helispot:					
			Lat:					
			Long:					
			<b>Structure</b>			EMS Responders & Capability:		EMPF Ellis + EMTF Wiesen=Fireline Medics EMPF Perry + EMTF Facincani=Butte Fire w/ UTV
Equipment Available on Scene:		ALS and BLS Trauma gear						
Medical Emergency Channel		Command/Vipond Park Rptr						
ETA for Ambulance to Scene:								
Air:								
Ground:								
Approved Helispot:		Wise River RD						
Lat:		N 45. 47.467						
Long:		W 112. 56. 384						
Approved Helispot:								
Lat:								
Long:								
8.PREPARED BY (MEDICAL UNIT LEADER)			9.DATE TIME	10. REVIEWED BY (SAFETY OFFICER)		11. DATE TIME		
Anita Parkin			8/6 1800	Don Hammack		8/6 1800		

# MEDICAL PLAN (ICS 206 WF)

6. DIVISION/BRANCH/GROUP	AREA/LOCATION/CAPABILITY		
<b>Mike</b>	EMS Responders & Capability:	EMPF John Baker	
	Equipment Available on Scene:	ALS Med equip, 4x4s with the EMPFs	
	Medical Emergency Channel		
	ETA for Ambulance to Scene:		
	Air:		
	Ground:		
	Approved Helispot:		
	Lat:		
	Long:		
<b>Staging</b>	EMS Responders & Capability:		
	Equipment Available on Scene:		
	Medical Emergency Channel		
	ETA for Ambulance to Scene:		
	Air:		
	Ground:		
	Approved Helispot:		
	Lat:		
	Long:		
<b>Whiskey</b>	EMS Responders & Capability:	EMPF Becca Wallace	
	Equipment Available on Scene:	ALS Med equip, 4x4s with the EMPFs	
	Medical Emergency Channel		
	ETA for Ambulance to Scene:		
	Air:		
	Ground:		
	Approved Helispot:		
	Lat:		
	Long:		
<b>Zulu</b>	EMS Responders & Capability:	(Unstaffed)	
	Equipment Available on Scene:		
	Medical Emergency Channel		
	ETA for Ambulance to Scene:		
	Air:		
	Ground:		
	Approved Helispot:		
	Lat:		
	Long:		
8. PREPARED BY (MEDICAL UNIT LEADER)	9. DATE TIME	10. REVIEWED BY (SAFETY OFFICER)	11. DATE TIME
Anita Parkin	8/6 1800	Don Hammack	8/6 1800



# MEDICAL PLAN (ICS 206 WF)

Controlled Unclassified Information//Basic

## Medical Incident Report

**FOR A NON-EMERGENCY INCIDENT, WORK THROUGH CHAIN OF COMMAND TO REPORT AND TRANSPORT INJURED PERSONNEL AS NECESSARY.**

**FOR A MEDICAL EMERGENCY: IDENTIFY ON SCENE INCIDENT COMMANDER BY NAME AND POSITION AND ANNOUNCE "MEDICAL EMERGENCY" TO INITIATE RESPONSE FROM IMT COMMUNICATIONS/DISPATCH.**

**Use the following items to communicate situation to communications/dispatch.**

**1. CONTACT COMMUNICATIONS / DISPATCH (Verify correct frequency prior to starting report)**

*Ex: "Communications, Div. Alpha. Stand-by for Emergency Traffic."*

**2. INCIDENT STATUS: Provide incident summary (including number of patients) and command structure.**

*Ex: "Communications, I have a Red priority patient, unconscious, struck by a falling tree. Requesting air ambulance to Forest Road 1 at (Lat./Long.) This will be the Trout Meadow Medical, IC is TFLD Jones. EMT Smith is providing medical care."*

Severity of Emergency / Transport Priority	<input type="checkbox"/> <b>RED / PRIORITY 1 Life or limb threatening injury or illness. Evacuation need is IMMEDIATE</b> <i>Ex: Unconscious, difficulty breathing, bleeding severely, 2° - 3° burns more than 4 palm sizes, heat stroke, disoriented.</i> <input type="checkbox"/> <b>YELLOW / PRIORITY 2 Serious Injury or illness. Evacuation may be DELAYED if necessary.</b> <i>Ex: Significant trauma, unable to walk, 2° - 3° burns not more than 1-3 palm sizes.</i> <input type="checkbox"/> <b>GREEN / PRIORITY 3 Minor Injury or illness. Non-Emergency transport</b> <i>Ex: Sprains, strains, minor heat-related illness.</i>	
Nature of Injury or Illness & Mechanism of Injury		<i>Brief Summary of Injury or Illness (Ex: Unconscious, Struck by Falling Tree)</i>
Transport Request		<i>Air Ambulance / Short Haul/Hoist Ground Ambulance / Other</i>
Patient Location		<i>Descriptive Location &amp; Lat. / Long. (WGS84)</i>
Incident Name		<i>Geographic Name + "Medical" (Ex: Trout Meadow Medical)</i>
On-Scene Incident Commander		<i>Name of on-scene IC of Incident within an Incident (Ex: TFLD Jones)</i>
Patient Care		<i>Name of Care Provider (Ex: EMT Smith)</i>

**3. INITIAL PATIENT ASSESSMENT: Complete this section for each patient as applicable (start with the most severe patient)**

Patient Assessment: See IRPG page 106

Treatment:

**4. TRANSPORT PLAN:**

Evacuation Location (if different): (Descriptive Location (drop point, intersection, etc.) or Lat. / Long.) Patient's ETA to Evacuation Location:

Helispot / Extraction Site Size and Hazards:

**5. ADDITIONAL RESOURCES / EQUIPMENT NEEDS:**

*Example: Paramedic/EMT, Crews, Immobilization Devices, AED, Oxygen, Trauma Bag, IV/Fluid(s), Splints, Rope rescue, Wheeled litter, HAZMAT, Extrication*

**6. COMMUNICATIONS: Identify State Air/Ground EMS Frequencies and Hospital Contacts as applicable**

Function	Channel Name/Number	Receive (RX)	Tone/NAC *	Transmit (TX)	Tone/NAC *
COMMAND					
AIR-TO-GRND					
TACTICAL					

**7. CONTINGENCY: Considerations: If primary options fail, what actions can be implemented in conjunction with primary evacuation method? Be thinking ahead.**

**8. ADDITIONAL INFORMATION: Updates/Changes, etc.**

**REMEMBER: Confirm ETA's of resources ordered. Act according to your level of training. Be Alert. Keep Calm. Think Clearly. Act Decisively.**