

Grouse Fire



Thursday August 8th
Day Operations 0600-2230

*****Public Information Officer (PIO) Terina Hill 406-924-3831*****

BRIEFING 0700

Weed Wash 0700—1900

Showers 0500—1200 & 1400—2200

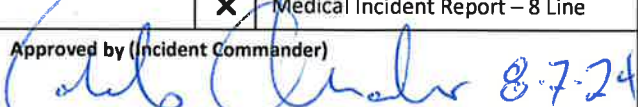
Meals 0500—0900 & 1830—2130

P1R4SM24 (0102)

MT-BDF-246327



Check-in, Maps, Finance Email

INCIDENT OBJECTIVES	1. Incident Name GROUSE FIRE	2. Date Prepared August 7, 2024	3. Time 1900
4. Operational Period: August 8, 2024 Day Operations 0600-2230			
<p>Leaders Intent</p> <ul style="list-style-type: none"> Risk management tools will be used to evaluate planned actions to provide an acceptable level of risk vs. reward between the risk to critical values and risk to responders. <p>Incident Objectives</p> <ul style="list-style-type: none"> Address the safety of firefighters, aviation and public through clear communication towards completion of objectives. Use a full suppression strategy with a combination of direct, indirect, and point zone protection tactics where reasonable to protect the identified critical values at risk. Develop contingency plans that identify locations and specific actions to be taken in the event the fire threatens or moves significantly towards the Pioneer Scenic By-way, Jerked Prairie, or Hwy 43. Coordinate with the Forest Archaeologist regarding cultural resources within the vicinity of the incident. Continue to ensure timely and accurate information is provided to the public including the DNRC, BLM, partners and stakeholders impacted by the fire regarding closure areas and other ongoing activities related to the Grouse Fire. 			
8. Attachments (X if attached)			
<input checked="" type="checkbox"/>	ICS 203	<input checked="" type="checkbox"/>	ICS 205 Incident Radio Comm Plan
<input checked="" type="checkbox"/>	Incident Weather Forecast		Fire Information Message
	Fire Behavior Forecast	<input checked="" type="checkbox"/>	Resource Advisor Message
<input checked="" type="checkbox"/>	Safety Message		Human Resource
<input checked="" type="checkbox"/>	ICS 204 Division Assignment Lists	<input checked="" type="checkbox"/>	Training Message
<input checked="" type="checkbox"/>	ICS 220 Air Operations Summary	<input checked="" type="checkbox"/>	Finance Message
9. Prepared by SITL Katie Bonogofsky (T)	9. Approved by (Incident Commander)  8-7-24		

ORGANIZATION ASSIGNMENT LIST		9. Operations Section	
1. Incident Name Grouse Fire MT-BDF-246327		Line Ops Planning Ops	Greg Campbell Jesse Myers
		a. Branch I - Divisions/Groups	
2. Date August 7, 2024	3. Time 1900	Division A	Brian Gorwitz; Tyson Luicer (T); Donovan Suko (T)
4. Operational Period August 8, 2024 Day Operations 0600—2230		Division M	Jerod Russell; Trevor Buchanon (T);
5. Incident Commander and Staff		Division W	Mike King; Matt Delaney (T)
		Division Z	Unstaffed
		STRUCTURE	Mike Gustafson; Evan Burke (T)
		STAGING	
Incident Commander	Richard Griffin Caleb Olander (T)	IA	Jerod Russell Nate Decker (T)
Safety Officer	Don Hammack	Mudd Creek	Unstaffed
Information Officer	Terina Hill	b. Branch II - Divisions/Groups	
Liaison Officer		Branch Director	
6. Agency Representatives		Division/Group	
Agency	Name	Division/Group	
BDNF	Antone Brennick; Kristen Thompson (T)	Division/Group	
Resource Advisor	Ayme Swartz	c. Branch III - Divisions/Groups	
7. Planning Section			
Chief	Kurt Wetzstein		
Resources Unit	Katie Bonogofsky (T)		
SCKN			
Situation Unit	Paul Smith (T)		
Demobilization Unit	Russ Walker (T)		
Documentation Unit		c. Air Operations Branch	
GISS	RIST	Air Operations	
IMET		Air Attack	
SOPL		FAO	Bert Smith
FBAN		Helicopter Coord	
HRSP		Helibase Manager	
LTAN		Air Tanker Coord	
ITSS		10. Finance Section	
Air Quality		Chief	Arden Ward
8. Logistics Section		Personnel Time	Victoria Davis (T)
Planning Logistics	Lawrence Falcon; Liz Carver	Personnel Time	Ashley Johnson (T)
Supply Unit/RCDM	Jennie Jennings (T)	Equipment Time	Tammy Carter (T)
Ordering Manager	Beth Youngstrom	Comp/Claims Unit	
Ground Support		Cost Unit	
Medical Unit	Anita Parkin; Alicia Tanrath (T)	Prepared by SITL (T)	
Communication Unit (RADO)	Erin Waldman		
Security Unit	Kevin Arnold		
Facilities Unit	Paul Kipling		
Base Camp Manager	Toby Aberle; David broch		

Fire Weather Forecast:

.DISCUSSION...Thursday east winds will gust to around 10 mph, while aviation assets will encounter a wind shear around 3000 feet AGL (above ground level) as winds shift westerly 20 to 25 mph. East winds will continue through Friday morning and begin to turn southwesterly during the day. A weak wave during the day will bring scattered showers or an isolated thunderstorm.

.THURSDAY...

- * Sky/Weather.....Mostly cloudy. Haze in the afternoon.
- * CWR (> 0.10 Inch)...10 percent.
- * Chance Lightning....15 percent.
- * LAL.....1.
- * Max Temperature.....59-64.
- * Min Humidity.....34-39 percent.
- * Wind (20 ft).....East 6-10 mph.
- * Mixing Height.....2500 ft agl increasing to 6500 ft agl.
- * Mixing Winds.....Southwest 15 mph.
- * Haines Index.....3 very low.
- * Precip Amount.....0.00 inches.

.THURSDAY NIGHT...

- * Sky/Weather.....Mostly cloudy.
- * CWR (> 0.10 Inch)...10 percent.
- * Chance Lightning....20 percent.
- * LAL.....1.
- * Min Temperature.....43-48.
- * Max Humidity.....68-73 percent.
- * Wind (20 ft).....East 7-10 mph.
- * Mixing Height.....3000 ft agl decreasing to less than 100 ft agl early in the evening.
- * Mixing Winds.....East 10 mph.
- * Precip Amount.....0.00 inches.

.FRIDAY...

- * Sky/Weather.....Mostly cloudy. Chance of rain showers and slight chance of thunderstorms in the afternoon.
- * CWR (> 0.10 Inch)...10 percent.
- * Chance Lightning....25 percent.
- * LAL.....3.
- * Max Temperature.....62-67.
- * Min Humidity.....33-38 percent.
- * Wind (20 ft).....Southeast around 6 mph shifting to the southwest 7-8 mph in the afternoon.
- * Mixing Height.....2000 ft agl increasing to 7000 ft agl.
- * Mixing Winds.....Southwest 10 mph.
- * Haines Index.....3 very low.
- * Precip Amount.....0.03 inches.

HEALTH AND SAFETY MESSAGE

SAFETY starts with ***YOU***

We are **ALL** accountable for **SAFE** behaviors

INCIDENT: Grouse Creek

DATE: 8/8/24

Operational Period: 0600-2230

Today's Message: Think About safety Differently

THINK ABOUT SAFETY DIFFERENTLY



Safe is defined in Webster's dictionary as:

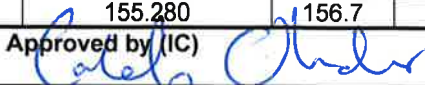
"Free from harm or risk"

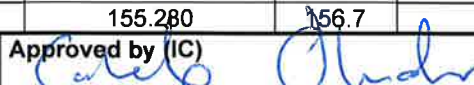
In my opinion, that would make safe very difficult to achieve in everyday life and all but impossible to achieve in our line of work. So let's think about it differently.


Instead of safety, let's think about varying amounts of risk that we either **accept, control, transfer, or avoid**. Our decisions should be based on how important our mission is and how much risk we'll need to accept to pull it off. Let's be honest, there are times it not only won't be safe, it might be downright dangerous and we need to be aware and prepared for that.

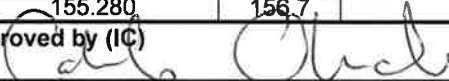
STOP, THINK, TALK then ACT


Grouse Fire Safety Team


ASSIGNMENT LIST			1.Branch		2. Division/Group		DIVISION A	
3. Incident Name			4. Operational Period:					
Grouse Creek Fire			Date: August 8, 2024			Time: 0600-2230		
5. Operations Personnel								
Line Operations		Greg Campbell		Division Supervisor		Brian Gorwitz; Tyson Luicer (T); Donovan Suko (T)		
Planning Operations		Jesse Myers						
Air Operations				Safety		Don Hammack		
6. Resources Assigned This Period								
Strike Team/Task Force/ Resource Designator	Last Shift	Leader	No. Pers.		Trans. Neede	Drop Off PT./Time	Pick Up PT./Time	
(C-01) CRW1 Bonneville IHC	8/14	Evans	22		N	0600/ICP	2230	
(C-10) CRW1 Flathead IHC	8/14	Borgen	25		N	0600/ICP	2230	
(C-09) CRW2 Lava	8/14	Trujillo	20		N	0600/ICP	2230	
(C-07) CRW2 West Coast Reforestation	8/14	Martinez	20		N	0600/ICP	2230	
(C-11) Great Northern	8/19	Buckly	21		N	0600/ICP	2230	
(E-33) ENG6-C&C Cougar Fire Co.	8/14	Reilly	3		N	0600/ICP	2230	
(E-46) ENG6-Butte fire w/UTV	8/12	Facincani	2		N	0600/ICP	2230	
(E-53) ENG6 Greywolf	8/16	Perez	3		N	0600/ICP	2230	
(E-35) ENG6-Castle Mountain	8/15	Welch	3		N	0600/ICP	2230	
7. Control Operations								
Task – Complete and hold line along Pettengill creek along 186 road, north along hwy 73, and on ridge between Grouse and Stine Creek.								
Purpose – Secure fire to the north of Pettengill creek and south of Stine creek.								
End State – Fire stays to the north of Pettengill and south of Stine Creek.								
8. Special Instructions: *Night patrol								
-Utilize UAS PSD to minimize fire severity during firing operation.								
-AMBO staged at DP-40, available to whole incident.								
-Butte Fire in Alpha has 1 paramedic and 1 EMT.								
9. Division/Group Communication Summary								
Function	Frequency - RX	Frequency - TX	TX Tone	RX Tone	Chann	Comments		
Dillon Dispatch	173.08750	165.72500	103.5		1	Tone guard number 8 (103.5).		
R1 SOA RPT	173.1875	164.38750	136.5	136.5	2			
TACTICAL 1	168.05000	168.05000	156.7		3			
MUTUAL AID	154.07000	154.07000	156.7		6			
A/G PRIMARY	168.52500	168.52500			9			
A/G SECONDARY	169.81250	169.81250			10			
MEDICAL A/G	155.34000	155.34000	156.7		11			
Air Guard	168.62500	168.62500	110.9		12			
Ground Medical	155.280	155.280	156.7		13			
Prepared by Resources Unit			Approved by (IC)		Date			
Katie Bonogofsky (T)					8/7/24	1900		

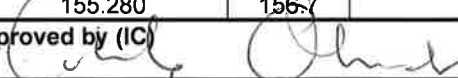
ASSIGNMENT LIST			1.Branch		2. Division/Group		DIVISION M	
3. Incident Name			4. Operational Period:6					
Grouse Creek Fire			Date: August 8, 2024			Time: 0600-2230		
5. Operations Personnel								
Line Operations		Greg Campbell		Division Supervisor		Jerod Russell; Trevor Buchanan (T);		
Planning Operations		Jesse Myers						
Air Operations				Safety		Don Hammack		
6. Resources Assigned This Period								
Strike Team/Task Force/ Resource Designator	Last Shift	Leader	No. Pers.		Trans. Needs	Drop Off PT./Time	Pick Up PT./Time	
(C-13) Bitterroot IHC	8/20	Gibbons	20		N	0600/ICP	2230	
(E-57) Cahoon Contracting LLC	8/19	Mattson	3		N	0600/ICP	2230	
(E-61) FEL1	8/19	DSJr Trucking	2		N	0600/ICP	2230	
(E-62) FEL1	8/19	DSJr Trucking	2		N	0600/ICP	2230	
(E-64/65/66) log trucks	8/20	Arke logging	3		N	0600/ICP	2230	
(E-63/71) loader/transport	8/20	Arke logging	2		N	0600/ICP	2230	
(O-133)TFLD	8/18	Ryan Hennager	1		N	0600/ICP	2230	
(O-144)TFLD (T)	8/19	Chris Herricks	1		N	0600/ICP	2230	
(O-19) HEQB	8/19	Williams	2		N	0600/ICP	2230	
(O-124) HEQB (T)	8/20	Wealton	1		N	0600/ICP	2230	
(O-59) EMPF	8/18	John Baker	1		N	0600/ICP	2230	
(O-135) Tech Spec	8/19	Sam Hodge	1		N	0600/ICP	2230	
(O-154) Tech Spec	8/12	Russ Walker	1		N	0600/ICP	2230	
HEQB (T)	8/14	Jake Durham	1		N	0600/ICP	2230	
(E67) Log Loader	8/20		2		N	0600/ICP	2230	
(E80) Log Loader	8/21		2		N	0600/ICP	2230	
(E-82) Skidder DS JR Trucking	8/21		2		N	0600/ICP	2230	
(E-83) Skidder DS JR Trucking	8/21		2		N	0600/ICP	2230	
7. Control Operations								
Task – Scout line from Division Alpha/Mike break to Harriett Lou Creek.								
Purpose – To identify control features to lessen the fires impact to the scenic byway.								
End State – Fire stays west of scenic byway.								
8. Special Instructions:								
-AMBO staged at DP-40, available to whole incident.								
-Butte Fire in Alpha has 1 paramedic and 1 EMT.								
9. Division/Group Communication Summary								
Function	Frequency - RX	Frequency - TX	TX Tone	RX Tone	Chann	Comments		
Dillon Dispatch	173.08750	165.72500	103.5		1	Tone guard number 8 (103.5).		
R1 SOA RPT	173.1875	164.38750	136.5	136.5	2			
TACTICAL 4	166.725	166.725			15			
MUTUAL AID	154.07000	154.07000	156.7		6			
A/G PRIMARY	168.52500	168.52500			9			
A/G SECONDARY	169.81250	169.81250			10			
MEDICAL A/G	155.34000	155.34000	156.7		11			
Air Guard	168.62500	168.62500	110.9		12			
Ground Medical	155.280	155.280	156.7		13			
Prepared by Resources Unit Katie Bonogofsky (T)			Approved by (IC) 		Date 8/7/24			

ASSIGNMENT LIST			1.Branch		2. Division/Group DIVISION W		
3. Incident Name Grouse Creek Fire			4. Operational Period:6 Date: August 8, 2024 Time: 0600-2230				
5. Operations Personnel							
Line Operations Planning Operations		Greg Campbell Jesse Myers		Division Supervisor		Mike King; Matt Delaney (T)	
Air Operations				Safety		Don Hammack	
6. Resources Assigned This Period							
Strike Team/Task Force/ Resource Designator	Last Shift	Leader	No. Pers.		Trans. Neede	Drop Off PT./Time	Pick Up PT./Time
(C-12) Greyback 2B	8/19	Dougherty	20		N	0600/ICP	2230
(E-52) ENG6-MT-BDF-71	8/18	Larsen	8		N	0600/ICP	2230
(O-56) Falling Mod	8/16	Clifford	2		N	0600/ICP	2230
(O-115) Kaniksu WFM	8/19	Castaldo	12		N	0600/ICP	2230
(O-143) TFLD	8/20	Rob Dunn	1		N	0600/ICP	2230
(O-58) EMPF	8/18	Becca Wallace	1		N	0600/ICP	2230
7. Control Operations							
Task – Secure line west of Division Alpha/Whiskey break along Pettengill Creek and Reservoir Creek.							
Purpose – Look for opportunities to engage the fire as it approaches Pettengill Creek and Reservoir Creek.							
End State – To keep fire north of Pettengill Creek.							
8. Special Instructions:							
-AMBO staged at DP-40, available to whole incident. -Butte Fire in Alpha has 1 paramedic and 1 EMT.							
9. Division/Group Communication Summary							
Function	Frequency - RX	Frequency - TX	TX Tone	RX Tone	Chann	Comments	
Dillon Dispatch	173.08750	165.72500	103.5		1	Tone guard number 8 (103.5).	
R1 SOA RPT	173.1875	164.38750	136.5	136.5	2		
TACTICAL 2	168.20000	168.20000	156.7		4		
MUTUAL AID	154.07000	154.07000	156.7		6		
A/G PRIMARY	168.52500	168.52500			9		
A/G SECONDARY	169.81250	169.81250			10		
MEDICAL A/G	155.34000	155.34000	156.7		11		
Air Guard	168.62500	168.62500	110.9		12		
Ground Medical	155.280	155.280	156.7		13		
Prepared by Resources Unit Katie Bonogofsky (T)			Approved by (IC) 		Date 8/7/24		

ASSIGNMENT LIST		1.Branch		2. Division/Group Zulu		
3. Incident Name Grouse Creek Fire			4. Operational Period: Date: August 8, 2024 Time: 0600-2230			
5. Operations Personnel						
Line Operations	Greg Campbell		Division Supervisor		Unstaffed	
Planning Operations	Jesse Myers					
Air Operations			Safety	Don Hammack		
6. Resources Assigned This Period						
Strike Team/Task Force/ Resource Designator	Last Shift	Leader	No. Pers.	Trans. Neede	Drop Off PT./Time	Pick Up PT./Time
7. Control Operations						
8. Special Instructions:						
<p>-AMBO staged at DP-40, available to whole incident. -Butte Fire in Alpha has 1 paramedic and 1 EMT.</p>						
9. Division/Group Communication Summary						
Function	Frequency - RX	Frequency - TX	TX Tone	RX Tone	Chann	Comments
Dillon Dispatch	173.08750	165.72500	103.5		1	Tone guard number 8 (103.5).
R1 SOA RPT	173.1875	164.38750	103.5	136.5	2	
TACTICAL 2	168.20000	168.20000	156.7		4	
MUTUAL AID	154.07000	154.07000	156.7		6	
A/G PRIMARY	168.52500	168.52500			9	
A/G SECONDAR	169.81250	169.81250			10	
MEDICAL A/G	155.34000	155.34000			11	
Air Guard	168.62500	168.62500	110.9	110.9	12	
Ground Medical	155.280	155.280	156.7		13	
Prepared by Resources Unit Katie Bonogofsky (T)		Approved by (IC) 		Date 8/7/24		

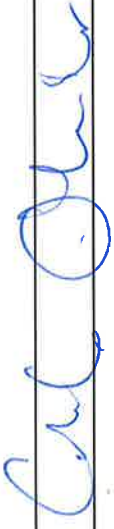
ASSIGNMENT LIST			1.Branch		2. Division/Group			STRUCTURE		
3. Incident Name Grouse Creek Fire			4. Operational Period: Date: August 8, 2024 Time: 0600-2230							
5. Operations Personnel										
Line Operations Planning Operations		Greg Campbell Jesse Myers			Division Supervisor		Mike Gustafson; Evan Burke (T); Fernando Quiroga (T)			
Air Operations					Safety		Don Hammack			
6. Resources Assigned This Period										
Strike Team/Task Force/ Resource Designator		Last Shift	Leader	No. Pers.		Trans. Neede	Drop Off PT./Time	Pick Up PT./Time		
(E-02) ENG6 Greywolf		8/13	Grant	3		N	0600/ICP	2230		
(E-37) ENG6 Whitegrass Fire		8/16	Whitegrass	3		N	0600/ICP	2230		
(E-69) ENG6 1315		8/14	Klanecky	3		N	0600/ICP	2230		
(E-13) Water tender-Blacktail		8/10	Smith	1		N	0600/ICP	2230		
(E-70) ENG6 Mountain Man		8/20	Leyva	3		N	0600/ICP	2230		
(E-36) Robert Bakken		8/15	Bakken	3		N	0600/ICP	2230		
7. Control Operations										
Task – Secure structures on 186 road, scenic byway, and continue to monitor for hot spots.										
Purpose – Protect structures and stop fire impact to structures in Pettengill and on byway.										
End State – Private property prepped and structures protected.										
8. Special Instructions:										
-AMBO staged at DP-40, available to whole incident. -Butte Fire in Alpha has 1 paramedic and 1 EMT.										
9. Division/Group Communication Summary										
Function	Frequency - RX	Frequency - TX	TX Tone	RX Tone	Chann	Comments				
Dillon Dispatch	173.08750	165.72500	103.5		1	Tone guard number 8 (103.5).				
R1 SOA RPT	173.1875	164.38750	103.5	136.5	2					
TACTICAL 3	168.60000	168.60000	156.7		5					
MUTUAL AID	154.07000	154.07000	156.7		6					
A/G PRIMARY	168.52500	168.52500			9					
A/G SECONDAR	169.81250	169.81250			10					
MEDICAL A/G	155.34000	155.34000			11					
Air Guard	168.62500	168.62500	110.9	110.9	12					
Ground Medical	155.280	155.280	156.7		13					
Prepared by Resources Unit Katie Bonogofsky (T)			Approved by (IC) 							Date 8/7/24

ASSIGNMENT LIST			1.Branch		2. Division/Group		STAGING	
3. Incident Name Grouse Creek Fire			4. Operational Period:6 Date: August 8, 2024 Time: 0600-2230					
5. Operations Personnel								
Line Operations Planning Operations		Greg Campbell Jesse Myers			Division Supervisor			
Air Operations					Safety		Don Hammack	
6. Resources Assigned This Period								
Strike Team/Task Force/ Resource Designator		Last Shift	Leader	No. Pers.		Trans. Needs	Drop Off PT./Time	Pick Up PT./Time
(E-09) SKG1-Bigfoot		8/11	Spencer	1		N	0600/ICP	2230
(E-42) SKG1-RT Logging LLC		8/16	Thompson	2		N	0600/ICP	2230
(E-43) Dozer-CC Stacking		8/16	Cornell	2		N	0600/ICP	2230
(E-94) EXC2 Blacktail		8/21		2		N	0600/ICP	2230
(E-84) DHP DS JR Trucking		8/21		2		N	0600/ICP	2230
7. Control Operations								
Task – Be available to all divisions upon requests.								
Purpose – To support all divisions.								
End State – All divisions are supported.								
8. Special Instructions: Report to Planning Ops for morning in-briefing.								
-AMBO staged at DP-40, available to whole incident. -Butte Fire in Alpha has 1 paramedic and 1 EMT.								
9. Division/Group Communication Summary								
Function	Frequency - RX	Frequency - TX	TX Tone	RX Tone	Chann	Comments		
Dillon Dispatch	173.08750	165.72500	103.5		1	Tone guard number 8 (103.5).		
R1 SOA RPT	173.1875	164.38750	136.5	136.5	2			
TACTICAL 1	168.05000	168.05000	156.7		3			
MUTUAL AID	154.07000	154.07000	156.7		6			
A/G PRIMARY	168.52500	168.52500			9			
A/G SECONDARY	169.81250	169.81250			10			
MEDICAL A/G	155.34000	155.34000	156.7		11			
Air Guard	168.62500	168.62500	110.9		12			
Ground Medical	155.280	155.280	156.7		13			
Prepared by Resources Unit Katie Bonogofsky (T)			Approved by (IC) 			Date 8/7/24	Time 1900	

ASSIGNMENT LIST			1.Branch		2. Division/Group		IA GROUP	
3. Incident Name			4. Operational Period:6					
Grouse Creek Fire			Date: August 8, 2024			Time: 0600-2230		
5. Operations Personnel								
Line Operations		Greg Campbell		Division Supervisor		Jerod Russell Nate Decker (T)		
Planning Operations		Jesse Myers						
Air Operations				Safety		Don Hammack		
6. Resources Assigned This Period								
Strike Team/Task Force/ Resource Designator		Last Shift	Leader	No. Pers.		Trans. Needs	Drop Off PT./Time	Pick Up PT./Time
(C-11) Great Northern		8/19	Buckly	21		N	0600/ICP	2230
(E-35) ENG6-Castle Mountain		8/15	Welch	3		N	0600/ICP	2230
(E-57) ENG6 Cahoon Contracting		8/19	Mattson	3		N	0600/ICP	2230
7. Control Operations								
Task – Be available for IA.								
Purpose – Support IA.								
End State – IA fires as requested.								
8. Special Instructions: Report to Planning Ops for morning in-briefing.								
Remain on assigned DIV. Be available for IA.								
Function	Frequency - RX	Frequency - TX	TX Tone	RX Tone	Chann	Comments		
Dillon Dispatch	173.08750	165.72500	103.5		1	Tone guard number 8 (103.5).		
R1 SOA RPT	173.1875	164.38750	136.5	136.5	2			
TACTICAL 1	168.05000	168.05000	156.7		3			
MUTUAL AID	154.07000	154.07000	156.7		6			
A/G PRIMARY	168.52500	168.52500			9			
A/G SECONDARY	169.81250	169.81250			10			
MEDICAL A/G	155.34000	155.34000	156.7		11			
Air Guard	168.62500	168.62500	110.9		12			
Ground Medical	155.280	155.280	156.7		13			
Prepared by Resources Unit Katie Bonogofsky (T)			Approved by (IC) 					

AIR OPERATIONS SUMMARY			Prepared By:	Bert Smith	Prepared Date:	8/7/2024	Prepared Time:	21:00
1. INCIDENT NAME: B-D IA/Support		2. Operational Date: August 8, 2024		Start Time: 800		3. Butte Sunset: 20:50		Butte Pumpkin: 21:20
4. Remarks Safety Notes, Hazards, Air ops Mission plan for density altitude (DA) and windy conditions Report any unauthorized/UAS activity Wash bucket, if moving between dipsites over Contentinal Divide. Offer constructive feedback to pilots during tactical operations Status current at time of report. Changes occur constantly.			5. Medevac Aircraft: Order through dispatch Life Flight ALS KBTM 800-232-0911 4MA Litter Capable WR Helibase BMG CMH Short Haul HRF			6. TFRs: 4/9355 Grouse 11500' MSL 120.100 4/2588 Johnson 12000' MSL 118.725 (BRF) 4/1257 Hughes 13000' MSL 119.575 (BRF)		
7. Personnel:			8. Frequencies:		AM	FM	9. Fixed-Wing GACC:	
B-D FAO	Bert Smith	Phone #	406-660-7371	Nat. Flight Follow		168.6500 Rx/Tx Tn 110.9	Air Tankers/SEATS: Order through dispatch	
ASGS Grouse	Bert Smith			Grouse A/G Primary		168.5250	Lead Plane/ASM: Order through dispatch	
Butte HEBM	Bert Smith			Grouse A/G Secondary		169.8125		
Dillon Dispatch	Aircraft Desk	406-683-3939		Grouse A/A TFR	120.100		Air Attack: Order through dispatch	
				Grouse A/A Rotor	124.600			
				IA A/G 29		166.9000	Helicopters GACC: Order through dispatch T1 Avail GACC Lend/Lease	
				IA A/G 26		166.6875		
4MA	Nick Plovanic	406-366-0179		IA A/A Primary	119.625		SMJK GACC: Order through dispatch	
				IA A/A Secondary	134.150			
5GE	Rich Reneau	406-493-5799		VMED 28 (TAN)		155.340 Tx Tn 156.7	Helicopters GACC: Order through dispatch T1 Avail GACC Lend/Lease	
				Medical WHITE		155.280 Tx Tn 156.7		
1HT	Joel Anderson	208-413-1602		DNRC A/G Yellow		151.2200	SMJK GACC: Order through dispatch	
2AC	Jerrid Silva	406-381-5963		DNRC A/G Orange		151.4000		
0PJ	Ricky Cox	601-527-7360					SMJK GACC: Order through dispatch	
2HX	Josh Quinn	352-933-1613						
							SMJK GACC: Order through dispatch	
							SMJK GACC: Order through dispatch	
HELICOPTERS/UAS								
FAA N#	Call Sign	Make/Model	Type	Base	Available	Remarks		
N144MA	4MA	Bell 407HP	3	WRH	830	Committed Forest IA		
NS2HX	2HX	Bell 429	3	KBTM	930	Grouse		
N205GE	5GE	UH-1H	2	KBTM	930	Restricted/Committed Forest IA		
N721HT	1HT	S-64	1	KBTM	930	NRGA Support/Tanked		
N172AC	2AC	S-64	1	KBTM	930	NRGA Support/Tanked		
N810PJ	0PJ	UH-60A	1	KBTM	930	NRGA Support/Bucket		
UAS T3	UR-32	Alta X	3	Grouse	TBD	Grouse PSD/IR		
Notes/Remarks								
Flight follow through appropriate dispatch until contact has been made on the incident. Then flight follow local.								
Cost Summarys bertram.smith@usda.gov/Buttehb24@gmail.com								

ICS 205 - INCIDENT RADIO COMMUNICATIONS PLAN

1. Incident Name: GROUSE Incident Channels		2. Date/Time Prepared Date: 8/7/24 Time: 1900		3. Operational Period: Date From: 08/8/24 Date To: 08/8/24 Time From: 0600 Time To: 2230					
4. Communications									
Ch#	Function	Name	Assigned To	Rx Freq	Rx Tone	Tx Freq	Tx Tone	Mode	Notes
1	DILLON DISPATCH	VIPOND PARK	All Divisions	173.08750		165.72500	103.5	A	Tone guard number 8 (103.5).
2	TACTICAL RPT	R1 SOA RPT	All Divisions	173.1875	136.5	164.38750	136.5	A	
3	TACTICAL	TAC 1	DIV A	168.05000		168.05000	156.7	A	
4	TACTICAL	TAC 2	DIV W	168.20000		168.20000	156.7	A	
5	TACTICAL	TAC 3	STRUCTURE GROUP	168.60000		168.60000	156.7	A	
6	MUTUAL AID	RED	All Divisions	154.07000		154.07000	156.7	A	
7	MUTUAL AID	MAROON	UNASSIGNED	154.28000		154.28000	156.7	A	
8	MUTUAL AID	GOLD	UNASSIGNED	153.90500		153.90500	156.7	A	
9	A/G PRIMARY	A/G 1	All Divisions	168.52500		168.52500		A	
10	A/G SECONDARY	A/G 2	All Divisions	169.81250		169.81250		A	
11	MEDICAL A/G	VMET 28 (TAN)	All Divisions	155.34000		155.34000	156.7	A	
12	Air Guard	Air Guard	All Divisions	168.62500	110.9	168.62500	110.9	A	
13	Ground Medical	White	All Divisions	155.280		155.280	156.7	A	
15	TACTICAL	TAC 4	M	166.725		166.725		A	
16									
17									
18									
19									
5. Special Instructions									
6. Prepared by: Katie Bonogofsky SITL (T)			Signature: 		Date/Time:				
ICS 205 - CONTROLLED UNCLASSIFIED INFORMATION/BASIC									

Resource Advisor Messages

Ayme Swartz (Archaeologist) 406-560-5250
ayme.swartz@usda.gov

- You are in bear country!!! Store all attractants such as food, drinks, garbage, toiletries, oil etc. in a bear proof container. *Do NOT sleep with food in tents at night.*
- This fire is located within an active grazing allotment. There may a few head of cattle remaining up Pettengill creek. Please let the local district know of any sightings.
- **AIR OPS**—There are aquatic invasive species in the rivers such as whirling disease and New Zealand mud snails. Do not contaminate our lakes!!!
 - ✓ If river water is used, do not drop into any other waterways and do not cross-contaminate buckets.
 - ✓ Do not use water from west of the Continental Divide.
 - ✓ Avoid dipping or scooping water from multiple water sources within the same operational period to minimize cross-contamination of water sources.
 - ✓ Use deeper (blue) water whenever possible. Avoid areas that will intake mud or plants.
 - ✓ Avoid transferring water between drainages or between unconnected waters within the same drainage.
 - ✓ Do not dump water directly from one stream or lake into another. Avoid spraying suppression water into local waterbodies (ponds, lakes, rivers, streams, wetlands, seeps, or springs).
 - ✓ **Do not dip out of Bobcat or Schwinger lakes!**
- There is a weed wash located at the junction of highways 43 and 73 at the H-J. Please use upon arrival and departure, we are striving to prevent the spread of noxious weeds.

Grouse Fire
Finance Hotline: 575-342-2044

Please make sure to check-in upon arriving on incident

IMPORTANT INFORMATION: Grouse Finance is a mix of on-site and virtual staff available to support you and your finance needs. We have established a Finance Hotline to assist you throughout your assignment. Submit your CTRs and Shift tickets electronically. If you have any questions regarding the electronic processes, please reach out to us via the Finance Hotline.

Please submit your Shift Ticket / CTR to 2024.grouse.finance@firenet.gov using the following format-Email Subject Line: Use the "TIME/Resource Order No./ Resource Name/Position Code" format in the subject line with your information.

(Example: **TIME/O-200/SBear/Safety**)

Email all documents that pertain to your assignment:

Agency Overhead	Agency ADs / EFFs	VIPR Resources	Contract / Agency Crews	Cooperators
Resource Order Crew Time Reports (CTRs)	Resource Order Casual Hire Form CTRs	Resource Order VIPR Agreement Schedule of Items Inspections Shift Tickets	Resource Order Manifest Agreement / Contract Schedule of Items Inspections CTRs	Resource Order Agreement Shift Tickets / CTRs

Please submit Equipment Shift Tickets or Crew Time Reports (CTRs) every other day, at a minimum.

Please **include your email address and phone number** in the body of the email when sending your documents, so that we can easily contact you if there are questions.

COMP/CLAIMS - please fill out GM, and OF 289 with signatures, and send into finance as soon as the request is needed. There is a possibility that the request will NOT be approved, but get the forms in ASAP, to properly generate S#'s.

FOR RESOURCES DEMOBING:

- Complete and email your final CTR/Shift Ticket as soon as you know your travel time. This form will need to be signed by your supervisor.
- Call the Finance Hotline to verify Finance has everything needed. This step will clear you from Finance to start traveling home. It is still necessary to complete demob with the other functions.
- You will receive your final OF-288 or OF-286 within 48 hours, with instructions if applicable.

DEMOB LIST

0-x Name Date Time

DEMOB LIST:

Demob 8/8

A 20.4

LWD 8/8 Demob 8/9

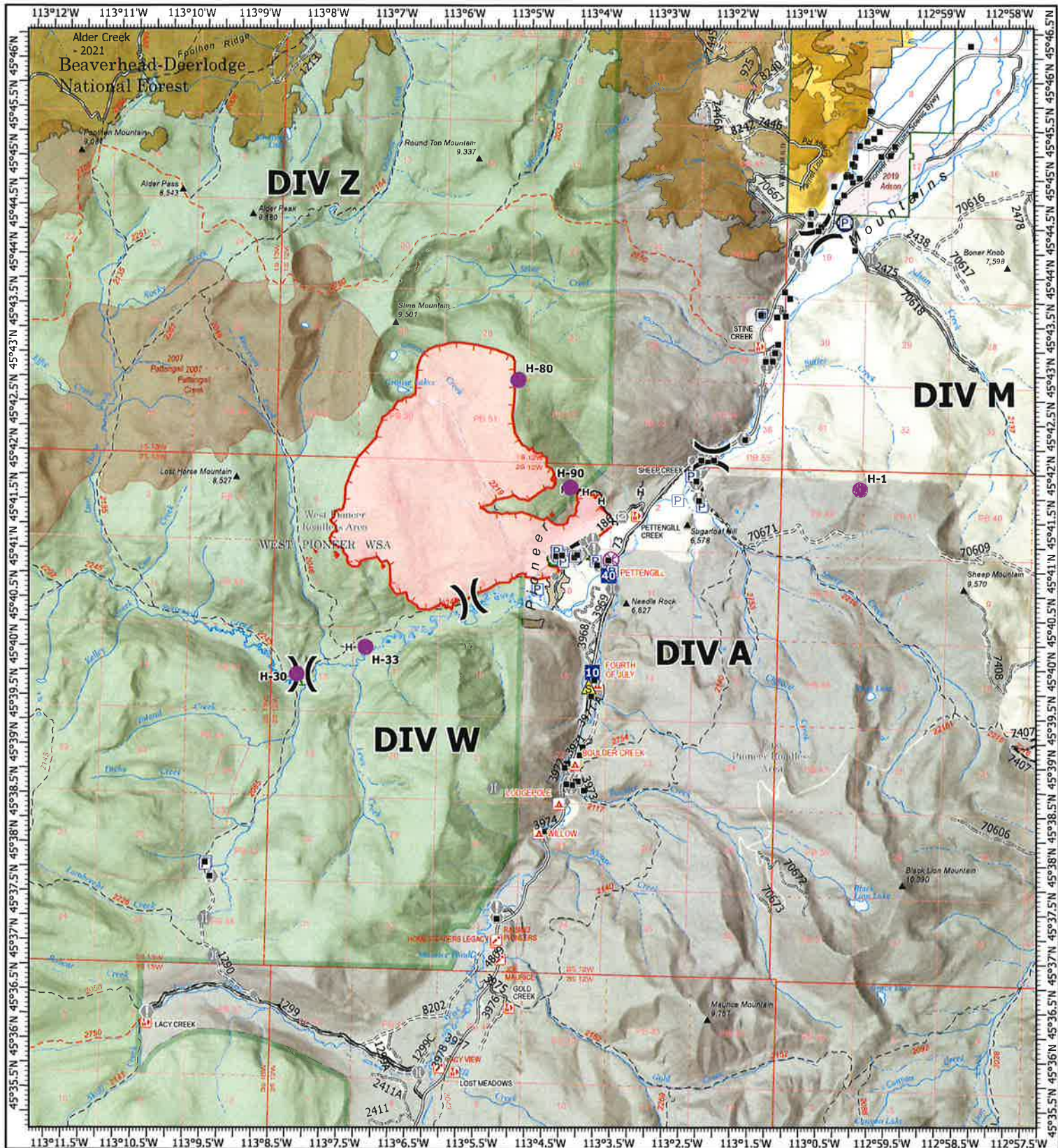
O-10

O-85

- See Planning tent for checkout sheet.
- Call Finance at 575-342-2044.
- Get all CTRs or Shift Tickets in early. Contract resources make sure you have an evaluation.
- WEED WASH!!! Located at 64800 MT-43, Wise River.

ORDERING:

Please send all orders to 2024.grouse.ordering@firenet.gov



IAP

Grouse
 MT-BDF-246327
 08/08/2024 Day

3700 est. acres at 08/07/2024 @ 1800 MDT

0 0.250.5 1 1.5 2

Miles

1:100,000 | RIST 2024 | 8/7/2024 1917

Hand Sketch

North American 1983 Datum, Lat/Long Grid



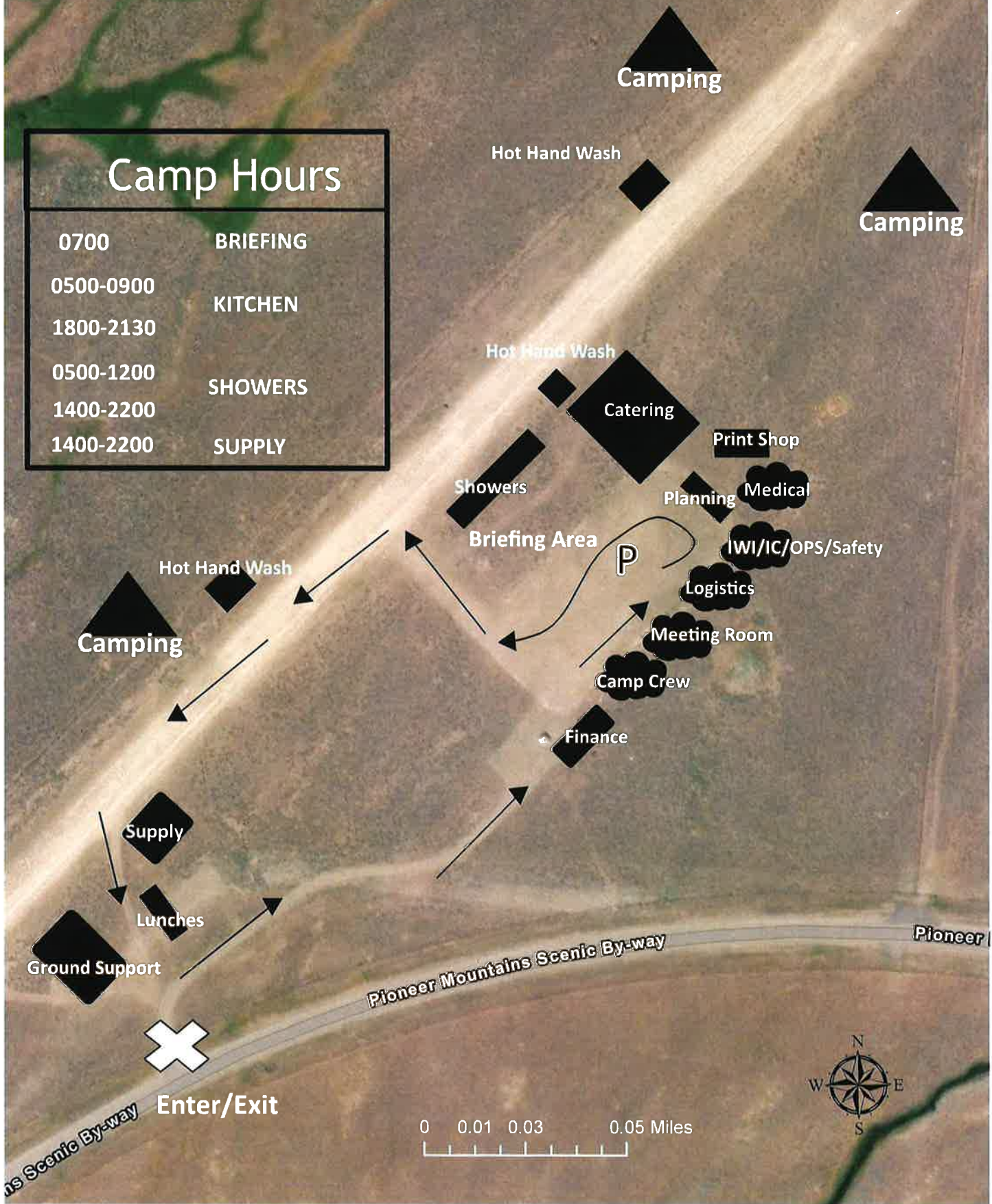
Wildfire Daily Fire Perimeter	Value at Risk	Road, Dirt/Gravel
Contained	Other	Road, high clearance
Uncontained	Gate	FS Closed Road
Structure	Bridge	Infrastructure Bridge EDW Deck Type
Completed Hand Line	Road Repair	USFS Roadless Areas
Access Route	Culvert	FS Wilderness Study Area Boundary
Other	Safety Zone	Forest Service Land
Hellsport	Draft Site	Bureau of Land Management Lands
UAS Launch and Recovery	Road	Interagency Fire Perimeter History Since 2004
Division Break	Road, Dirt/Gravel	Interagency Fuels Treatments
Drop Point	Road, Paved	Alder Creek 2021



2024 Grouse Fire ICP Site Map MT-BDF-246327

Camp Hours

0700	BRIEFING
0500-0900	KITCHEN
1800-2130	
0500-1200	SHOWERS
1400-2200	
1400-2200	SUPPLY



0 0.01 0.03 0.05 Miles



Grouse Fire

Incident Within an Incident: Emergency Action Plan

LEADERS INTENT - To provide efficient patient care and facilitate rapid transport to definitive care. In the case of a serious accident requiring patient transport to a medical facility:

- The IWI commander will be established at the incident scene.
- The closest ranking Operations Leader will proceed to the IWI site and assist if necessary.
- Use the 8-line protocol to assess patient; if patient evaluation is either Red or Yellow, use **VIPOND PARK frequency (Command) 173.08750 RX, 165.72500 TX, tone 103.5 on TX** to **contact Dillon Dispatch to initiate medical IWI**. If patient assessment is Green, contact Fireline supervision for incident medical personnel to respond.
- IWI Commander has authority to request from Dillon Dispatch Life-Flight Helicopter and/or ALS Ambulance along with incident medical personnel.
- If patient assessment is Red, IWI Commander is encouraged to activate multiple transport options. IWI Commander will utilize appropriate option for patient transport to definitive care.
- For extraction forest aircraft, utilize Air to Ground Primary (**168.52500 RX/TX**). If using an air ambulance, use TAN (155.3400 RX/TX) to communicate with air ambulance.
- If incident should occur outside the Grouse Fire Incident, contact 911 and Dillon Dispatch on **VIPOND PARK frequency (Command) 173.08750 RX, 165.72500 TX, tone 103.5 on TX** for monitoring and support and to notify whether patient is incident personnel or civilian.
- Patients evaluated as Green notify nearest supervisor of the location of the incident and assigned EMT to determine treatment and transport.
- Upon notification of a serious accident, the following will report to nearest radio: Incident Commander and Operations Section Chief.
- Incident radio traffic on **VIPOND PARK frequency (Command) 173.08750 RX, 165.72500 TX, tone 103.5 on TX** will be monitored by the Dillon Interagency Dispatch Center.

Approved by: /s/ Caleb Olander, Incident Commander (T)
Date: 07/31/2024

MEDICAL PLAN (ICS 206)

MEDICAL PLAN ICS 206	1. INCIDENT NAME <p style="text-align: center;">Grouse</p>	2. DATE PREPARED 8/7/2024	3. TIME PREPARED 1600	4. OPERATIONAL PERIOD 0600-2200 8/8/2024		
5. INCIDENT MEDICAL AID STATIONS						
MEDICAL AID STATIONS	LOCATION	PARAMEDICS				
		YES	NO			
*ICP Medical Unit	*Wise River Airport Base Camp (not fully ALS staffed)	*X				
6. TRANSPORTATION						
A. AIR AMBULANCES						
NAME	LOCATION	PHONE	PARAMEDICS			
			YES	NO		
Lifeflight Network	Butte, Bozeman, mult bases	800-232-0911	X			
Helena Short Haul	Helena, MT	Air Ops		X		
Medflight- Billings	Billings, MT	406-255-8441	X			
B. GROUND AMBULANCES						
NAME	LOCATION	PARAMEDICS				
		YES	NO			
A1 Ambulance Service	Butte, MT	X				
Anaconda Ambulance	Anaconda, MT	X				
Fireline Medics Ambulance	DP-40	X				
7. HOSPITALS						
NAME	ADDRESS	TRAVEL TIME		PHONE	HELIPAD	
		AIR	GROUND		YES	NO
St. James Healthcare	400 S. Clark Butte, MT	10min	50min	406-723-2585	X	
St. Patrick Hospital	500 W. Broadway St. Missoula, MT	60min	2.5hr	406-748-3600	X	
Community Hosp of Anaconda	401 W. Pennsylvania St. Anaconda MT	10min	60 min	406-563-8500	X	
St. Vincent Regional	1233 N 30th St. Billings, MT	60 min	4 hr 15	406-657-7000	X	
8. MEDICAL EMERGENCY PROCEDURES						
<p style="text-align: center;"><u>LINE "MEDICAL-EMERGENCY" PLAN:</u></p> <p>Reporting Party to contact Dillon Dispatch on Vipond with:</p> <ul style="list-style-type: none"> * Patient Complaint, Condition and Location via Tactical or Command Frequency. *Red, Yellow & Green Patients Trigger Incident Within Incident (IWI) *Refer to IWI plan in this IAP.* * The highest qualified responder will run "Medical-Emergency" on the assigned frequency assuming the role of IWI IC. *IWI IC will use "Medical Incident Report" worksheet in the IAP or IRPG. * Dispatch contacts Medical Unit Leader on the assigned frequency or cell phone. 				<p style="text-align: center;"><u>Medical Unit Contacts:</u></p> <p>Anita Parkin MEDL 406-382-0136</p> <p>Alicia Tanrath MEDL (t) 406-493-7043</p> <p style="text-align: center;"><u>IN CAMP</u></p> <p>MEDL first, then "FM Ambo", or "Butte Fire", nights</p> <p>*Contact MEDL as soon as possible. Can escalate to Dispatch or 911 if needed or urgent.</p>		
ICS 206 WF	9. PREPARED BY: (Medical Unit Leader) MEDL Anita Parkin		10. REVIEWED BY: (Safety Officer) Don Hammack			

MEDICAL PLAN (ICS 206 WF)

1. INCIDENT/PROJECT NAME										
Grouse					Date/Time:		8/8/2024 0600-0600			
3. AMBULANCE SERVICES										
NAME	COMPLETE ADDRESS				PHONE	PARAMEDICS				
						YES	NO			
A1 Ambulance	507 Centennial Ave, Butte, MT				406-490-3130	X				
Jefferson Valley EMS	203 W. Legion Ave, Whitehall, MT				406-346-2715	X				
4. AIR AMBULANCE SERVICES										
NAME	PHONE				TYPE OF AIRCRAFT/CAPABILITY					
Lifeflight Network	800-232-0911				Bell 407					
Helena Short Haul	Dillon Disp, AirDesk 406-683-3939				AS 350 B3					
Medflight-Billings, MT	406-255-8411				EC-145					
NAME AND COMPLETE ADDRESS	GPS DATUM-WGS 84 COORDINATE STANDARD		TRAVEL TIME		PHONE	HELIPAD		FACILITY LEVEL OF CARE		
			AIR	GROUND		YES	NO			
St. James Healthcare 400 S. Clark Street Butte, MT	LAT: N 46-00.542500	W 112-32.662333	10min	50min	406-723-2585	X		Level 3		
	LONG: W 112-32.662333									
	VHF:									
St. Patrick Hospital 500 W. Broadway Street Missoula, MT	LAT: N 46-52.527333	W 113-59.9865	60min	2 hrs +30	406-748-3600	X		Level 2		
	LONG: W 113-59.9865									
	VHF:									
Community Hosp of Anaconda 401 W. Pennsylvania Street Anaconda, MT	LAT: N 46-7.93	W 112-57.43	10min	60min	406-563-8500	X		Critical Access		
	LONG: W 112-57.43									
	VHF:									
St. Vincent Regional 1027 N. 27th Street Billings, MT	LAT: N 45-47.626667	W 108-31.1150	60 min	3 hrs + 20	406-657-7000	X		Level 1		
	LONG: W 108-31.1150									
	VHF:									
6. DIVISION/BRANCH/GROUP			AREA/LOCATION/CAPABILITY							
Alpha			EMS Responders & Capability:				EMPF Ellis+EMTF Wiesen=Fireline Medics EMPF Perry+EMTF Facincani= Butte Fire w/UTV			
			Equipment Available on Scene:				ALS & BLS Trauma gear, O2, Stokes, UTV			
			Medical Emergency Channel:				Command/Vipond Park Rptr			
			ETA for Ambulance to Scene:							
			Air:							
			Ground:							
			Approved Helispot:							
			Latitude:							
			Longitude:							
			Structure			EMS Responders & Capability:				EMPF Ellis +EMTF Wiesen=Fireline Medics EMPF Perry+EMTF Facincani= Butte Fire w/UTV
Equipment Available on Scene:						ALS and BLS Trauma gear				
Medical Emergency Channel:						Command/Vipond Park Rptr				
ETA for Ambulance to Scene:										
Air:										
Ground:										
Approved Helispot:						Wise River RD				
Latitude:						N 45. 47.467				
Longitude:						W 112. 56. 384				
Approved Helispot:										
Latitude:										
Longitude:										
8. PREPARED BY (MEDL)			9. DATE & TIME		10. REVIEWED BY (SOF)			11. DATE & TIME		
Anita Parkin			8/7 1800		Don Hammack			8/7 1800		

MEDICAL PLAN (ICS 206 WF)

6. DIVISION/BRANCH/GROUP			
Mike	EMS Responders & Capability:	EMPF John Baker	
	Equipment Available on Scene:	ALS Medical equip, 4x4 vehical	
	Medical Emergency Channel:		
	ETA for Ambulance to Scene:		
	Air:		
	Ground:		
	Approved Helispot:		
	Latitude:		
	Longitude:		
Staging	EMS Responders & Capability:		
	Equipment Available on Scene:		
	Medical Emergency Channel:		
	ETA for Ambulance to Scene:		
	Air:		
	Ground:		
	Approved Helispot:		
	Latitude:		
	Longitude:		
Whiskey	EMS Responders & Capability:	EMPF Wallace	
	Equipment Available on Scene:	ALS Medical equip, 4x4 vehical	
	Medical Emergency Channel:		
	ETA for Ambulance to Scene:		
	Air:		
	Ground:		
	Approved Helispot:		
	Latitude:		
	Longitude:		
Zulu	EMS Responders & Capability:	(Unstaffed)	
	Equipment Available on Scene:		
	Medical Emergency Channel:		
	ETA for Ambulance to Scene:		
	Air:		
	Ground:		
	Approved Helispot:		
	Latitude:		
	Longitude:		
8. PREPARED BY (MEDL)	9. DATE & TIME	10. REVIEWED BY (SOF)	11. DATE & TIME
Anita Parkin	8/7 1800	Don Hammack	8/7 1800

MEDICAL PLAN (ICS 206 WF)

Controlled Unclassified Information//Basic

Medical Incident Report					
FOR A NON-EMERGENCY INCIDENT, WORK THROUGH CHAIN OF COMMAND TO REPORT AND TRANSPORT INJURED PERSONNEL AS NECESSARY. FOR A MEDICAL EMERGENCY: IDENTIFY ON SCENE INCIDENT COMMANDER BY NAME AND POSITION AND ANNOUNCE "MEDICAL EMERGENCY" TO INITIATE RESPONSE FROM IMT COMMUNICATIONS/DISPATCH.					
Use the following items to communicate situation to communications/dispatch.					
1. CONTACT COMMUNICATIONS / DISPATCH (Verify correct frequency prior to starting report) <i>Ex: "Communications, Div. Alpha, Stand-by for Emergency Traffic."</i>					
2. INCIDENT STATUS: Provide incident summary (including number of patients) and command structure. <i>Ex: "Communications, I have a Red priority patient, unconscious, struck by a falling tree. Requesting air ambulance to Forest Road 1 at (Lat./Long.) This will be the Trout Meadow Medical, IC is TFLD Jones. EMT Smith is providing medical care."</i>					
Severity of Emergency / Transport Priority	<input type="checkbox"/> RED / PRIORITY 1 Life or limb threatening injury or illness. Evacuation need is IMMEDIATE <i>Ex: Unconscious, difficulty breathing, bleeding severely, 2^o – 3^o burns more than 4 palm sizes, heat stroke, disoriented.</i> <input type="checkbox"/> YELLOW / PRIORITY 2 Serious Injury or illness. Evacuation may be DELAYED if necessary. <i>Ex: Significant trauma, unable to walk, 2^o – 3^o burns not more than 1-3 palm sizes.</i> <input type="checkbox"/> GREEN / PRIORITY 3 Minor Injury or illness. Non-Emergency transport <i>Ex: Sprains, strains, minor heat-related illness.</i>				
Nature of Injury or Illness & Mechanism of Injury			<i>Brief Summary of Injury or Illness (Ex: Unconscious, Struck by Falling Tree)</i>		
Transport Request			<i>Air Ambulance / Short Haul/Hoist Ground Ambulance / Other</i>		
Patient Location			<i>Descriptive Location & Lat. / Long. (WGS84)</i>		
Incident Name			<i>Geographic Name + "Medical" (Ex: Trout Meadow Medical)</i>		
On-Scene Incident Commander			<i>Name of on-scene IC of Incident within an Incident (Ex: TFLD Jones)</i>		
Patient Care			<i>Name of Care Provider (Ex: EMT Smith)</i>		
3. INITIAL PATIENT ASSESSMENT: Complete this section for each patient as applicable (start with the most severe patient)					
Patient Assessment: See IRPG page 106					
Treatment:					
4. TRANSPORT PLAN:					
Evacuation Location (if different): (Descriptive Location (drop point, intersection, etc.) or Lat. / Long.) Patient's ETA to Evacuation Location:					
Helispot / Extraction Site Size and Hazards:					
5. ADDITIONAL RESOURCES / EQUIPMENT NEEDS:					
<i>Example: Paramedic/EMT, Crews, Immobilization Devices, AED, Oxygen, Trauma Bag, IV/Fluid(s), Splints, Rope rescue, Wheeled litter, HAZMAT, Extrication</i>					
6. COMMUNICATIONS: Identify State Air/Ground EMS Frequencies and Hospital Contacts as applicable					
Function	Channel Name/Number	Receive (RX)	Tone/NAC *	Transmit (TX)	Tone/NAC *
COMMAND					
AIR-TO-GRND					
TACTICAL					
7. CONTINGENCY: <u>Considerations:</u> If primary options fail, what actions can be implemented in conjunction with primary evacuation method? Be thinking ahead.					
8. ADDITIONAL INFORMATION: Updates/Changes, etc.					
REMEMBER: Confirm ETA's of resources ordered. Act according to your level of training. Be Alert. Keep Calm. Think Clearly. Act Decisively.					