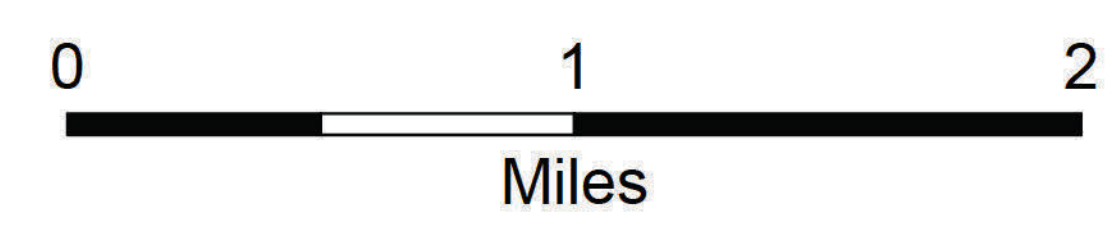
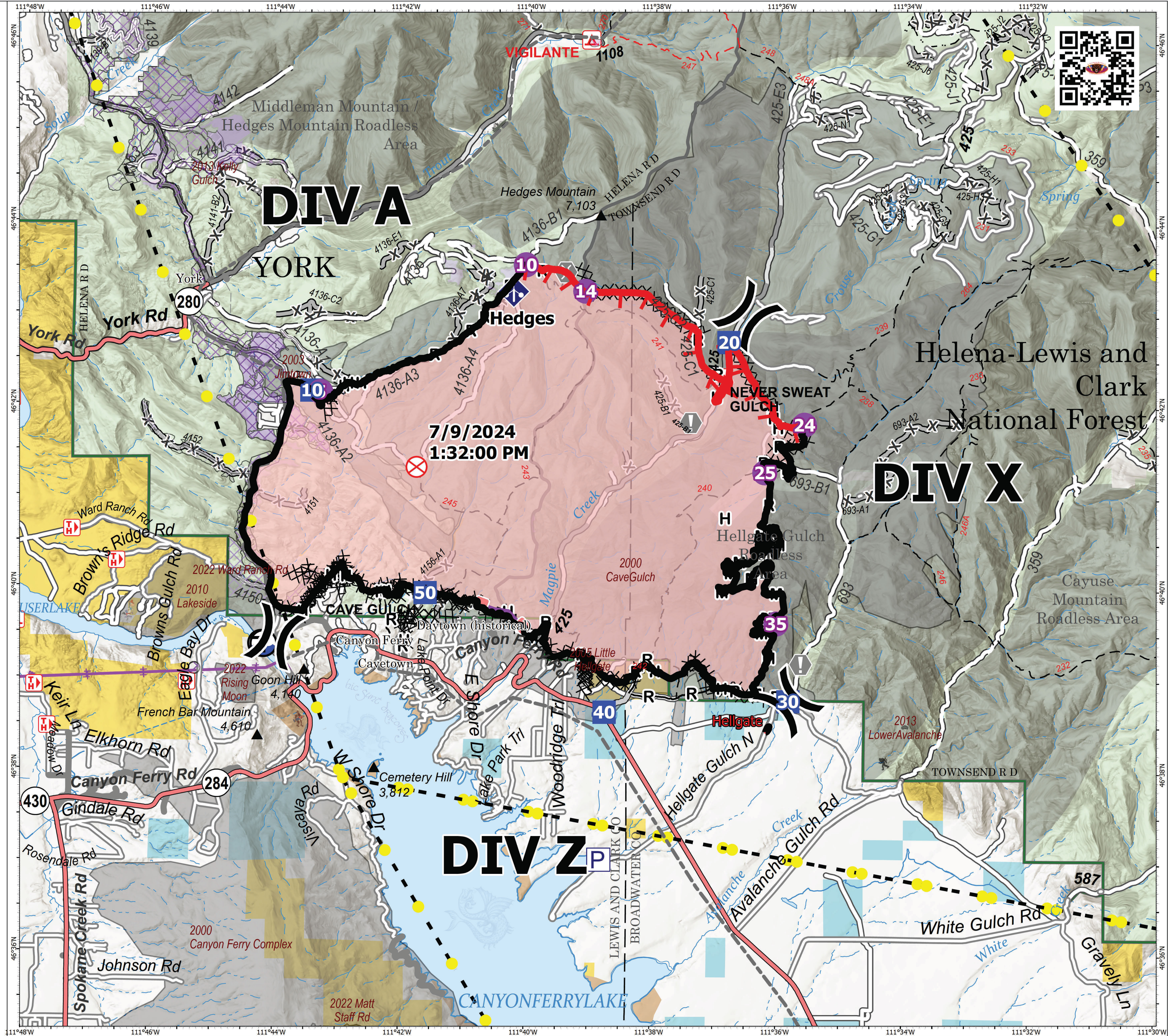


# Briefing

Horse Gulch  
MTHLF-000367  
07/21/2024 Day

15,167 acres at 07/20/2024 1110hrs

- Helispot
- ✕ Division Break
- Drop Point
- ⊗ Fire Origin
- Value at Risk
- ⬮ Bridge
- ◆ Mobile Weather Unit
- ⊕ Draft Site
- ✕ Completed Dozer Line
- H- Completed Hand Line
- M- Completed Mixed Construction Line
- R- Completed Road as Line
- Access Route
- IA Response Area
- Other
- Retardant Drop
- Contained
- Uncontained
- Wildfire Daily Fire Perimeter
- Transmission Lines
- Secondary Highway
- Secondary Paved
- Secondary Dirt
- Paved
- Gravel Road
- Dirt Road
- Unimproved Road
- † Forest Service Roads Closed
- USFS Roadless Areas
- Forest Service Land
- Bureau of Land Management Lands
- Other Federal Government Lands
- State Lands
- USFS Historic Fire Perimeters
- 90's
- 00's
- 20's
- 10's
- Past Hazardous Fuel Treatments



1:24,000 | NRT2 2024 | 7/20/2024 2007  
Acres from IR and GPS  
North American 1983 Datum, Lat,Long Grid