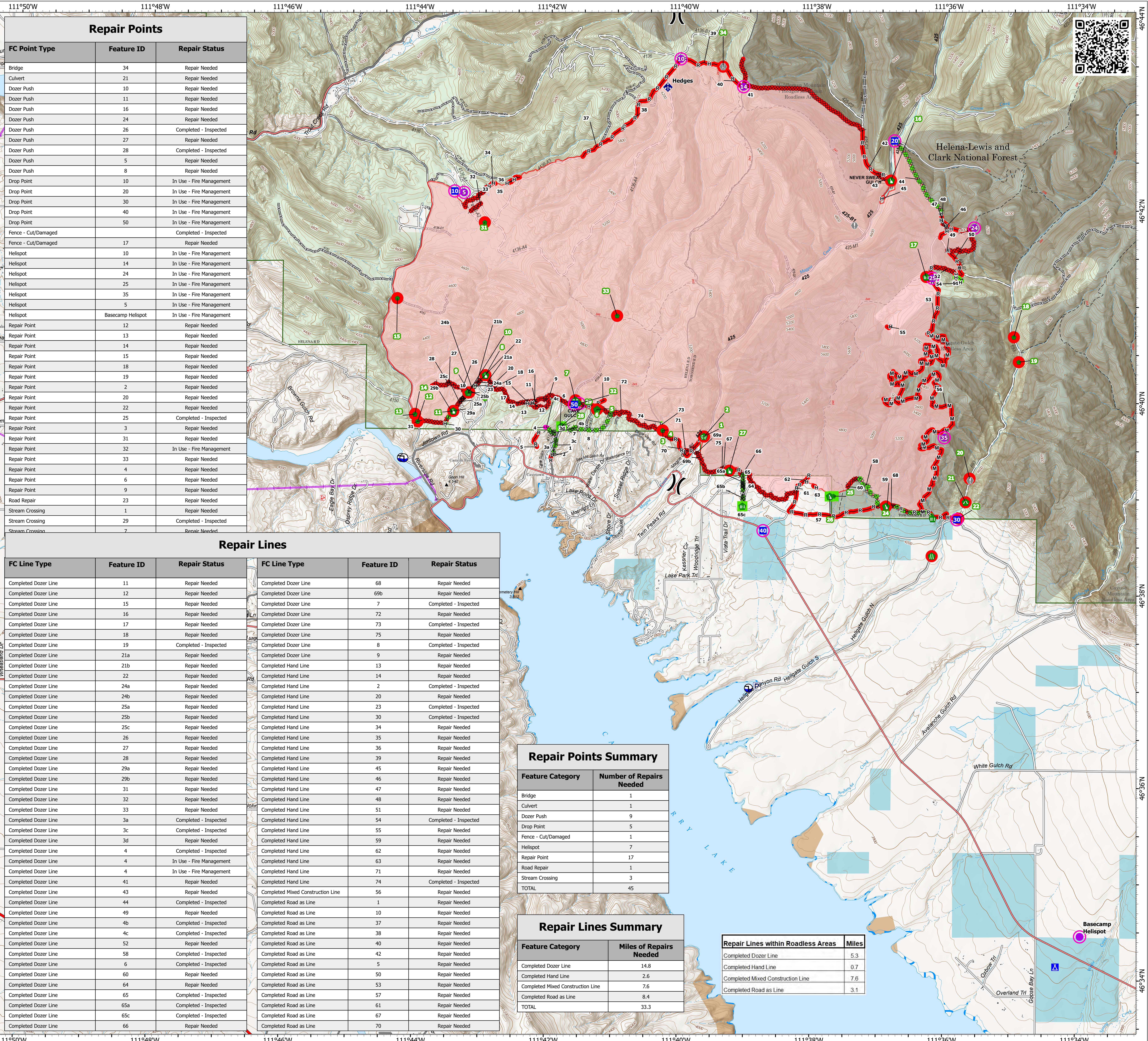


# Repair

Horse Gulch  
MTHLF-000367  
07/26/2024 Day

15,167 acres at 07/20/2024 1110hrs

- In Use - Fire Management
- Repair Needed
- Completed - Inspected
- In Use - Fire Management
- Repair Needed
- Completed - Inspected
- Pump
- Helispot
- ✕ Division Break
- Drop Point
- Camp
- Value at Risk
- Bridge
- Stream Crossing
- Road Repair
- Repair Point
- Fence - Cut/Damaged
- Dozer Push
- Culvert
- Mobile Weather Unit
- Draft Site
- xxxx Completed Dozer Line
- Completed Hand Line
- Completed Mixed Construction Line
- Completed Road as Line
- Wildfire Daily Fire Perimeter
- Structure
- Transmission Lines
- Primary Highway
- Secondary Highway
- Primary Paved
- Secondary Paved
- Secondary Dirt
- Forest Service Roads Closed
- Trail
- USFS Roadless Areas
- Forest Service Land
- Other Federal Government Lands
- State Lands



## Repair Points

FC Point Type	Feature ID	Repair Status
Bridge	34	Repair Needed
Culvert	21	Repair Needed
Dozer Push	10	Repair Needed
Dozer Push	11	Repair Needed
Dozer Push	16	Repair Needed
Dozer Push	24	Repair Needed
Dozer Push	26	Completed - Inspected
Dozer Push	27	Repair Needed
Dozer Push	28	Completed - Inspected
Dozer Push	5	Repair Needed
Dozer Push	8	Repair Needed
Drop Point	10	In Use - Fire Management
Drop Point	20	In Use - Fire Management
Drop Point	30	In Use - Fire Management
Drop Point	40	In Use - Fire Management
Drop Point	50	In Use - Fire Management
Fence - Cut/Damaged	17	Completed - Inspected
Fence - Cut/Damaged	17	Repair Needed
Helispot	10	In Use - Fire Management
Helispot	14	In Use - Fire Management
Helispot	24	In Use - Fire Management
Helispot	25	In Use - Fire Management
Helispot	35	In Use - Fire Management
Helispot	5	In Use - Fire Management
Helispot	Basecamp Helispot	In Use - Fire Management
Repair Point	12	Repair Needed
Repair Point	13	Repair Needed
Repair Point	14	Repair Needed
Repair Point	15	Repair Needed
Repair Point	18	Repair Needed
Repair Point	19	Repair Needed
Repair Point	2	Repair Needed
Repair Point	20	Repair Needed
Repair Point	22	Repair Needed
Repair Point	25	Completed - Inspected
Repair Point	3	Repair Needed
Repair Point	31	Repair Needed
Repair Point	32	In Use - Fire Management
Repair Point	33	Repair Needed
Repair Point	4	Repair Needed
Repair Point	6	Repair Needed
Repair Point	9	Repair Needed
Road Repair	23	Repair Needed
Stream Crossing	1	Repair Needed
Stream Crossing	29	Completed - Inspected
Stream Crossing	7	Repair Needed

## Repair Lines

FC Line Type	Feature ID	Repair Status	FC Line Type	Feature ID	Repair Status
Completed Dozer Line	11	Repair Needed	Completed Dozer Line	68	Repair Needed
Completed Dozer Line	12	Repair Needed	Completed Dozer Line	69b	Repair Needed
Completed Dozer Line	15	Repair Needed	Completed Dozer Line	7	Completed - Inspected
Completed Dozer Line	16	Repair Needed	Completed Dozer Line	72	Repair Needed
Completed Dozer Line	17	Repair Needed	Completed Dozer Line	73	Completed - Inspected
Completed Dozer Line	18	Repair Needed	Completed Dozer Line	75	Repair Needed
Completed Dozer Line	19	Completed - Inspected	Completed Dozer Line	8	Completed - Inspected
Completed Dozer Line	21a	Repair Needed	Completed Dozer Line	9	Repair Needed
Completed Dozer Line	21b	Repair Needed	Completed Hand Line	13	Repair Needed
Completed Dozer Line	22	Repair Needed	Completed Hand Line	14	Repair Needed
Completed Dozer Line	24a	Repair Needed	Completed Hand Line	2	Completed - Inspected
Completed Dozer Line	24b	Repair Needed	Completed Hand Line	20	Repair Needed
Completed Dozer Line	25a	Repair Needed	Completed Hand Line	23	Completed - Inspected
Completed Dozer Line	25b	Repair Needed	Completed Hand Line	30	Completed - Inspected
Completed Dozer Line	25c	Repair Needed	Completed Hand Line	34	Repair Needed
Completed Dozer Line	26	Repair Needed	Completed Hand Line	35	Repair Needed
Completed Dozer Line	27	Repair Needed	Completed Hand Line	36	Repair Needed
Completed Dozer Line	28	Repair Needed	Completed Hand Line	39	Repair Needed
Completed Dozer Line	29a	Repair Needed	Completed Hand Line	45	Repair Needed
Completed Dozer Line	29b	Repair Needed	Completed Hand Line	46	Repair Needed
Completed Dozer Line	31	Repair Needed	Completed Hand Line	47	Repair Needed
Completed Dozer Line	32	Repair Needed	Completed Hand Line	48	Repair Needed
Completed Dozer Line	33	Repair Needed	Completed Hand Line	51	Repair Needed
Completed Dozer Line	3a	Completed - Inspected	Completed Hand Line	54	Completed - Inspected
Completed Dozer Line	3c	Completed - Inspected	Completed Hand Line	55	Repair Needed
Completed Dozer Line	3d	Repair Needed	Completed Hand Line	59	Repair Needed
Completed Dozer Line	4	Completed - Inspected	Completed Hand Line	62	Repair Needed
Completed Dozer Line	4	In Use - Fire Management	Completed Hand Line	63	Repair Needed
Completed Dozer Line	4	In Use - Fire Management	Completed Hand Line	71	Repair Needed
Completed Dozer Line	41	Repair Needed	Completed Hand Line	74	Completed - Inspected
Completed Dozer Line	43	Repair Needed	Completed Mixed Construction Line	56	Repair Needed
Completed Dozer Line	44	Completed - Inspected	Completed Road as Line	1	Repair Needed
Completed Dozer Line	49	Repair Needed	Completed Road as Line	10	Repair Needed
Completed Dozer Line	4b	Completed - Inspected	Completed Road as Line	37	Repair Needed
Completed Dozer Line	4c	Completed - Inspected	Completed Road as Line	38	Repair Needed
Completed Dozer Line	52	Repair Needed	Completed Road as Line	40	Repair Needed
Completed Dozer Line	58	Completed - Inspected	Completed Road as Line	42	Repair Needed
Completed Dozer Line	6	Completed - Inspected	Completed Road as Line	5	Repair Needed
Completed Dozer Line	60	Repair Needed	Completed Road as Line	50	Repair Needed
Completed Dozer Line	64	Repair Needed	Completed Road as Line	53	Repair Needed
Completed Dozer Line	65	Completed - Inspected	Completed Road as Line	57	Repair Needed
Completed Dozer Line	65a	Completed - Inspected	Completed Road as Line	61	Repair Needed
Completed Dozer Line	65c	Completed - Inspected	Completed Road as Line	67	Repair Needed
Completed Dozer Line	66	Repair Needed	Completed Road as Line	70	Repair Needed

## Repair Points Summary

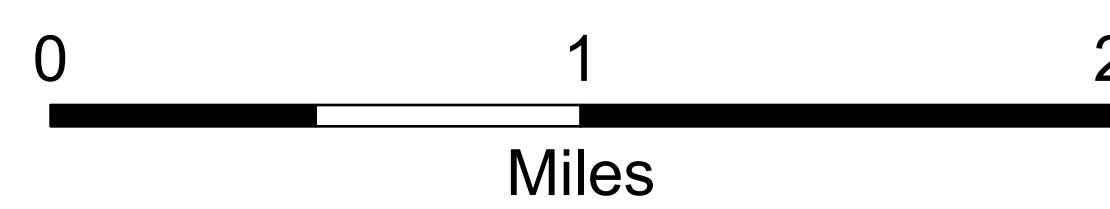
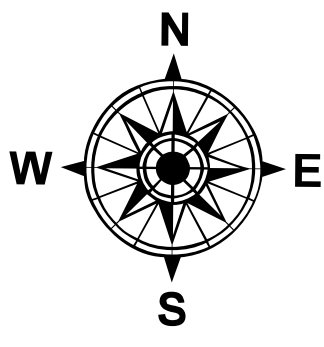
Feature Category	Number of Repairs Needed
Bridge	1
Culvert	1
Dozer Push	9
Drop Point	5
Fence - Cut/Damaged	1
Helispot	7
Repair Point	17
Road Repair	1
Stream Crossing	3
TOTAL	45

## Repair Lines Summary

Feature Category	Miles of Repairs Needed
Completed Dozer Line	14.8
Completed Hand Line	2.6
Completed Mixed Construction Line	7.6
Completed Road as Line	8.4
TOTAL	33.3

## Repair Lines within Roadless Areas

Feature Category	Miles
Completed Dozer Line	5.3
Completed Hand Line	0.7
Completed Mixed Construction Line	7.6
Completed Road as Line	3.1



1:22,940 | NRT2 2024 | 7/25/2024 1014  
Acres from IR and GPS  
North American 1983 Datum, LatLong Grid

