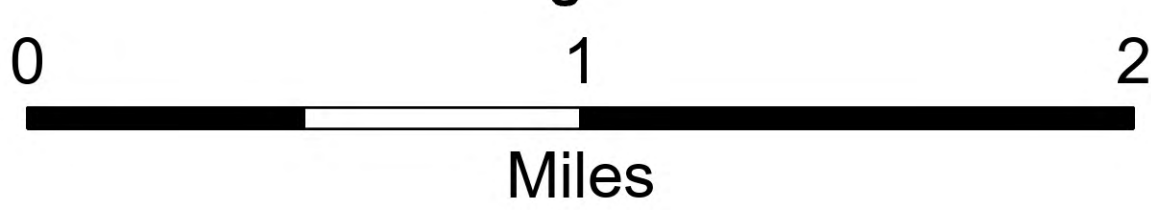
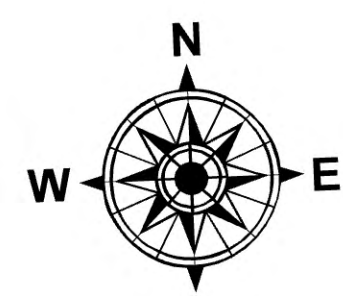
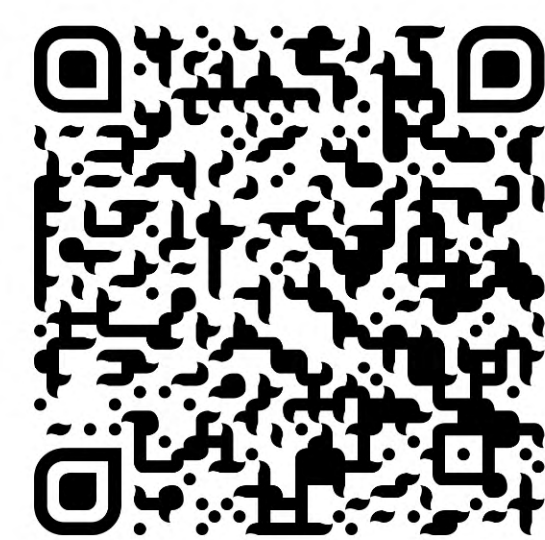


Air Operations

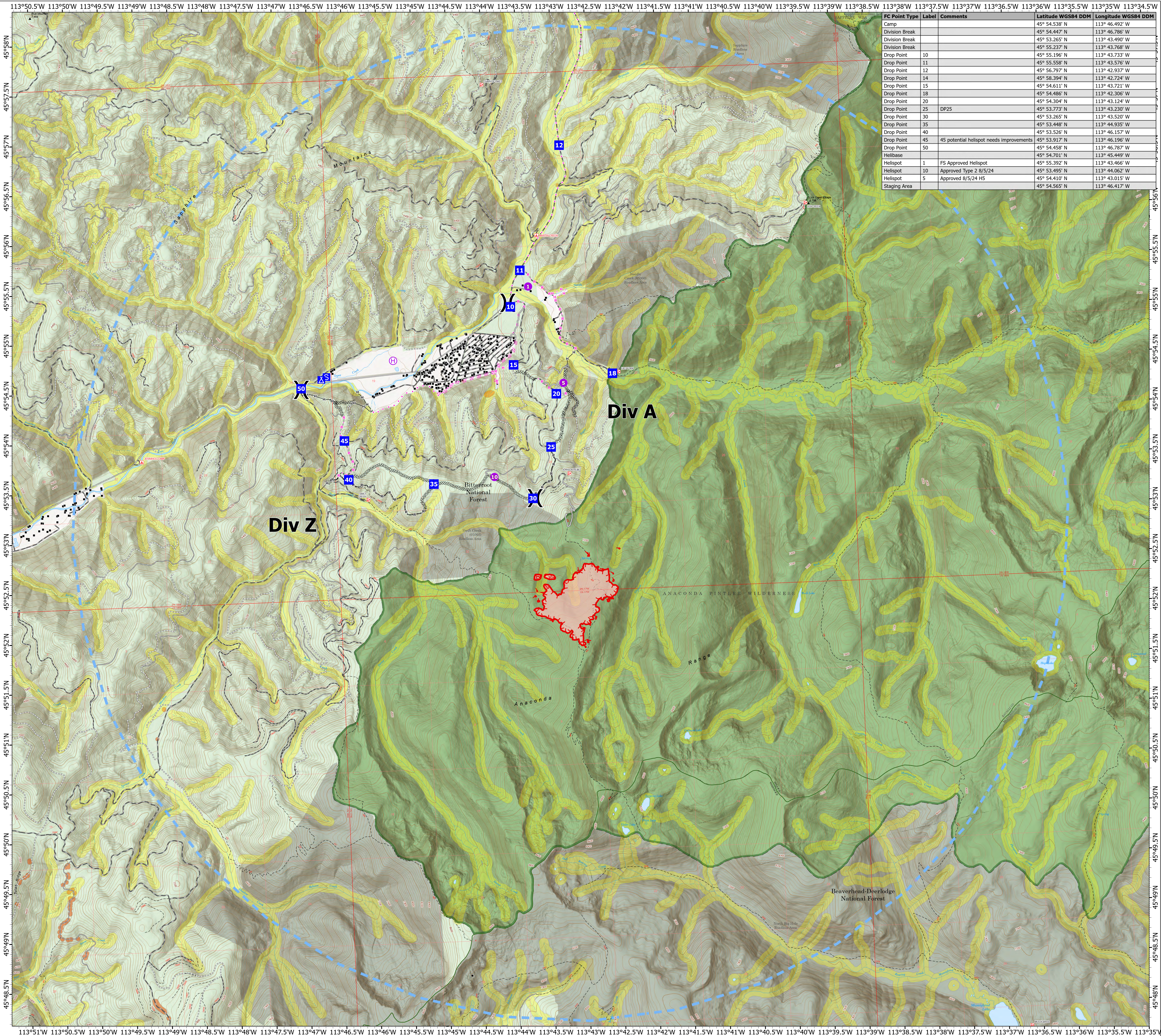
Johnson
MT-BRF-024261
08/14/2024

270 acres at 08/09/2024 @ 1130

- Structure
- Helispot
- ⊕ Helibase
- ⊗ Division Break
- Drop Point
- ⊠ Camp
- ⊡ Staging Area
- ⊞ Completed Dozer Line
- ⊞ Completed Hand Line
- ⊞ Completed Road as Line
- ⊞ Planned Dozer Line
- ⊞ Planned Hand Line
- ⊞ Planned Road as Line
- ⊞ Proposed Line
- Access Route
- Other
- Temporary Flight Restriction
- ⊞ Uncontained
- ⊞ Wildfire Daily Fire Perimeter
- Road, Dirt/Gravel
- Road, Paved
- Road, Dirt/Gravel
- Road, high clearance
- FS Closed Road
- USFS Roadless Areas
- FS Wilderness Study Area Boundary
- FS Wilderness Boundary
- Forest Service Land
- Bureau of Land Management Lands
- AFRAA - Hydro
- AFRAA - TES



1:22,000 | RIST 2024 | 8/13/2024 1942
IR
North American 1983 Datum, LatLong Grid



FC Point Type	Label	Comments	Latitude WGS84 DDM	Longitude WGS84 DDM
Camp			45° 54.538' N	113° 46.492' W
Division Break			45° 54.447' N	113° 46.786' W
Division Break			45° 53.265' N	113° 43.490' W
Division Break			45° 55.237' N	113° 43.768' W
Drop Point	10		45° 55.596' N	113° 43.733' W
Drop Point	11		45° 55.558' N	113° 43.576' W
Drop Point	12		45° 56.797' N	113° 42.937' W
Drop Point	14		45° 58.394' N	113° 42.724' W
Drop Point	15		45° 54.611' N	113° 43.721' W
Drop Point	18		45° 54.486' N	113° 42.306' W
Drop Point	20		45° 54.304' N	113° 43.124' W
Drop Point	25	DP25	45° 53.773' N	113° 43.230' W
Drop Point	30		45° 53.265' N	113° 43.520' W
Drop Point	35		45° 53.448' N	113° 44.935' W
Drop Point	40		45° 53.526' N	113° 46.157' W
Drop Point	45	45 potential helispot needs improvements	45° 53.917' N	113° 46.196' W
Drop Point	50		45° 54.458' N	113° 46.787' W
Helibase			45° 54.701' N	113° 45.449' W
Helispot	1	FS Approved Helispot	45° 55.392' N	113° 43.466' W
Helispot	10	Approved Type 2 8/5/24	45° 53.495' N	113° 44.062' W
Helispot	5	Approved 8/5/24 HS	45° 54.410' N	113° 43.015' W
Staging Area			45° 54.565' N	113° 46.417' W