

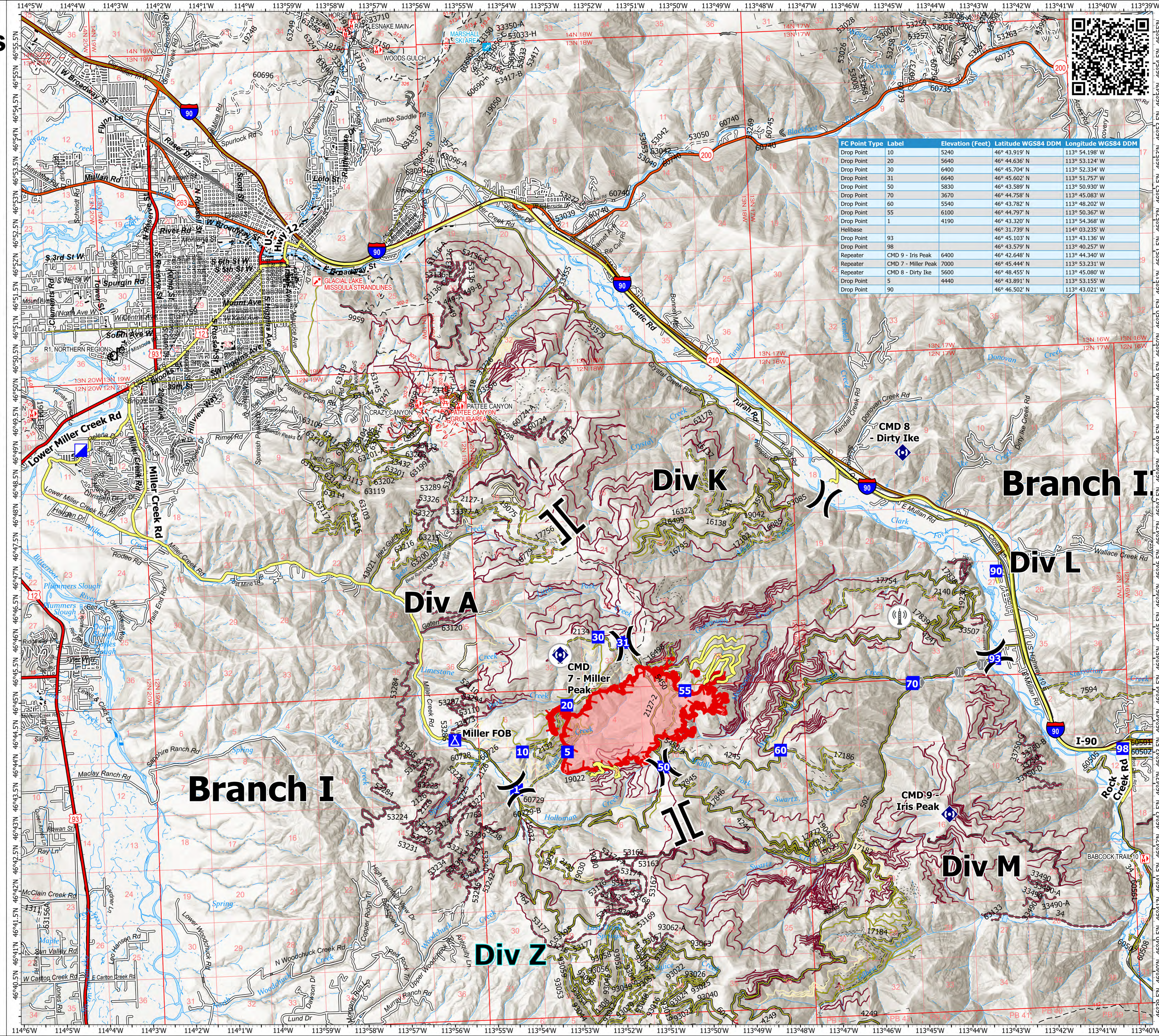
# Communications

Miller Peak  
 MT-LNF-240427  
 7/19/2024  
 2,124 acres at 7/18/2024



FC Point Type	Label	Elevation (Feet)	Latitude WGS84 DDM	Longitude WGS84 DDM
Drop Point	10	5240	46° 43.919' N	113° 54.198' W
Drop Point	20	5640	46° 44.636' N	113° 53.124' W
Drop Point	30	6400	46° 45.704' N	113° 52.334' W
Drop Point	31	6640	46° 45.602' N	113° 51.757' W
Drop Point	50	5830	46° 43.589' N	113° 50.930' W
Drop Point	70	3670	46° 44.758' N	113° 45.083' W
Drop Point	60	5540	46° 43.782' N	113° 48.202' W
Drop Point	55	6100	46° 44.797' N	113° 50.367' W
Drop Point	1	4190	46° 43.320' N	113° 54.368' W
Helibase			46° 43.739' N	113° 43.235' W
Drop Point	93		46° 45.103' N	113° 43.136' W
Drop Point	98		46° 43.579' N	113° 40.257' W
Repeater	CMD 9 - Iris Peak	6400	46° 42.648' N	113° 44.340' W
Repeater	CMD 7 - Miller Peak	7000	46° 45.444' N	113° 53.231' W
Repeater	CMD 8 - Dirty Ike	5600	46° 48.455' N	113° 45.080' W
Drop Point	5	4440	46° 43.891' N	113° 53.155' W
Drop Point	90		46° 46.502' N	113° 43.021' W

- ✕ Division Break
- ┌ Branch Break
- ▣ Incident Command Post
- Drop Point
- ▣ Closure
- ⛺ Camp
- ⌄ Bridge
- ⬇ Repeater
- ➡ Access Route
- ▭ Uncontained
- ▭ Wildfire Daily Fire Perimeter
- ▭ Communication Site
- ▭ Primary Highway
- ▭ Secondary Highway
- ▭ Road
- ▭ Road, Paved
- ▭ Road, Dirt/Gravel
- ▭ Road, high clearance
- ▭ Unknown
- ▭ Impassable by motor vehicles
- ▭ Gated - admin use
- ▭ Barrired - no admin use
- ▭ Open during bear season
- ▭ 20240719\_c0545\_Miller\_Peak\_Aircraft3\_Perimeter



1:35,000 | NR CIM 5 GIS / RIST 2024 |  
 7/19/2024 0802  
 IR  
 North American 1983 Datum, LatLong Grid