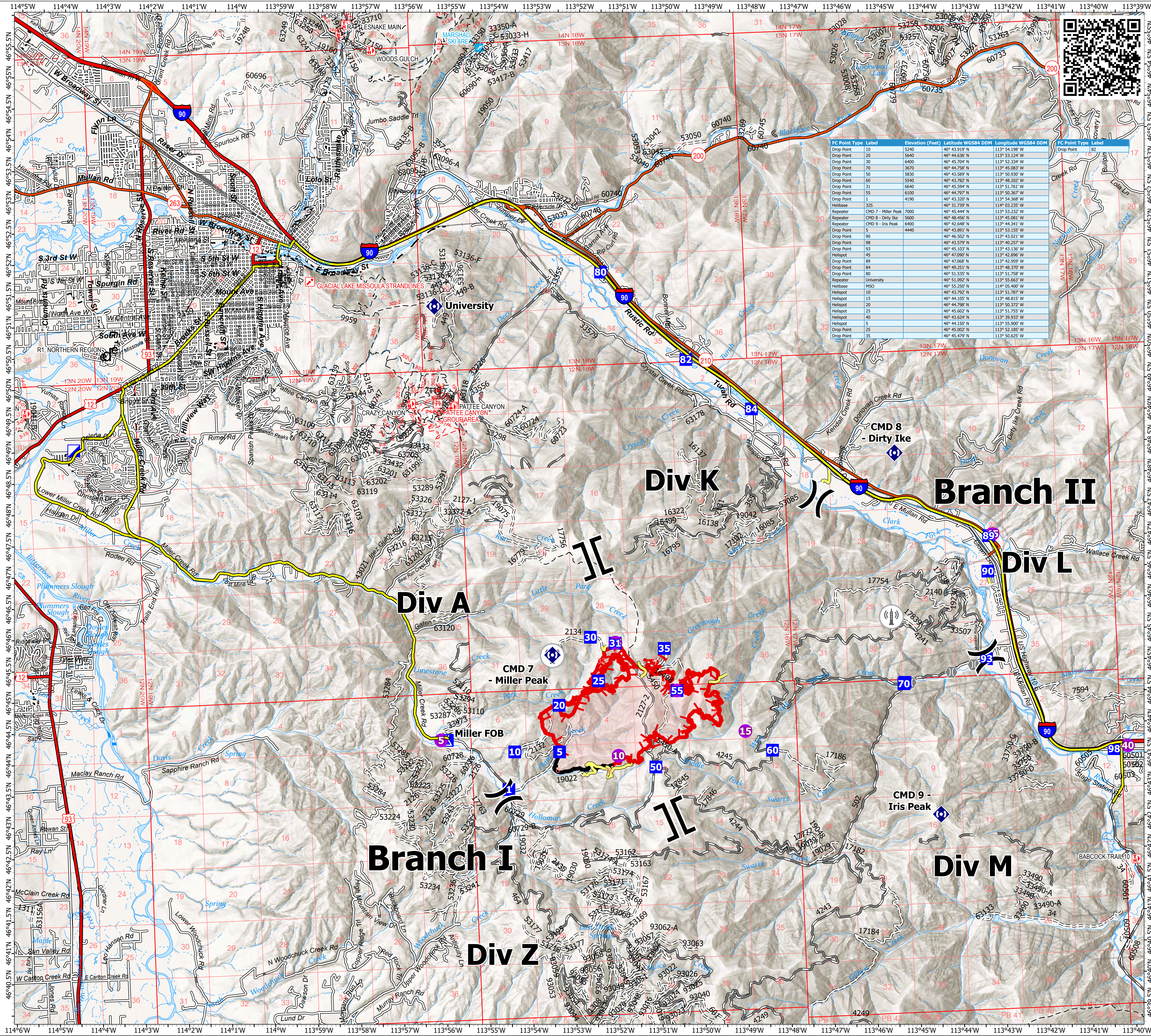


# Communications

Miller Peak  
 MT-LNF-240427  
 7/22/2024  
 2481 acres at 7/21/2024

- Helispot
- ⊕ Helibase
- ⋈ Division Break
- ⌌ Branch Break
- 🚒 Incident Command Post
- Drop Point
- ⊠ Closure
- ⛺ Camp
- ⊕ Bridge
- 📡 Repeater
- Access Route
- Contained
- Uncontained
- Other
- 🔴 Wildfire Daily Fire Perimeter
- 📡 Communication Site
- Primary Highway
- Secondary Highway
- Road
- Road, Paved
- Road, Dirt/Gravel
- Road, high clearance
- Main Travel Route

FC Point Type	Label	Elevation (Feet)	Latitude WGS84 DDM	Longitude WGS84 DDM	FC Point Type	Label
Drop Point	10	5240	46° 43.919' N	113° 54.198' W	Drop Point	82
Drop Point	20	5940	46° 44.636' N	113° 53.244' W	Drop Point	15
Drop Point	30	6400	46° 45.704' N	113° 52.334' W	Drop Point	17
Drop Point	70	3670	46° 44.758' N	113° 45.083' W	Drop Point	18
Drop Point	50	5830	46° 43.589' N	113° 50.930' W	Drop Point	19
Drop Point	60	5540	46° 43.762' N	113° 46.302' W	Drop Point	20
Drop Point	31	6640	46° 45.594' N	113° 51.761' W	Drop Point	21
Drop Point	55	6100	46° 44.797' N	113° 50.367' W	Drop Point	22
Drop Point	1	4190	46° 43.320' N	113° 54.368' W	Drop Point	23
Helibase	235		46° 31.739' N	114° 03.235' W	Drop Point	24
Repeater	CMD 7 - Miller Peak	7000	46° 45.444' N	113° 53.212' W	Drop Point	25
Repeater	CMD 8 - Dirty Ike	6400	46° 48.456' N	113° 45.081' W	Drop Point	26
Repeater	CMD 9 - Iris Peak	6400	46° 42.648' N	113° 44.341' W	Drop Point	27
Drop Point	5		46° 43.891' N	113° 53.155' W	Drop Point	28
Drop Point	90		46° 46.502' N	113° 43.021' W	Drop Point	29
Drop Point	98		46° 43.579' N	113° 40.257' W	Drop Point	30
Drop Point	93		46° 45.103' N	113° 43.136' W	Drop Point	31
Helispot	45		46° 47.090' N	113° 42.896' W	Drop Point	32
Drop Point	89		46° 43.068' N	113° 42.899' W	Drop Point	33
Drop Point	84		46° 49.251' N	113° 48.370' W	Drop Point	34
Drop Point	80		46° 51.535' N	113° 51.758' W	Drop Point	35
Repeater	University		46° 51.092' N	113° 55.663' W	Drop Point	36
Helibase	M50		46° 55.259' N	114° 05.400' W	Drop Point	37
Helispot	10		46° 43.792' N	113° 51.787' W	Drop Point	38
Helispot	15		46° 44.105' N	113° 48.815' W	Drop Point	39
Helispot	20		46° 44.798' N	113° 50.372' W	Drop Point	40
Helispot	25		46° 45.602' N	113° 51.755' W	Drop Point	41
Helispot	40		46° 43.628' N	113° 39.933' W	Drop Point	42
Helispot	5		46° 44.150' N	113° 55.900' W	Drop Point	43
Drop Point	25		46° 45.002' N	113° 52.185' W	Drop Point	44
Drop Point	35		46° 45.479' N	113° 50.625' W	Drop Point	45



1:35,000 | NR CIM 5 | 7/21/2024 2157 IR  
 North American 1983 Datum. Lat/Long Grid

