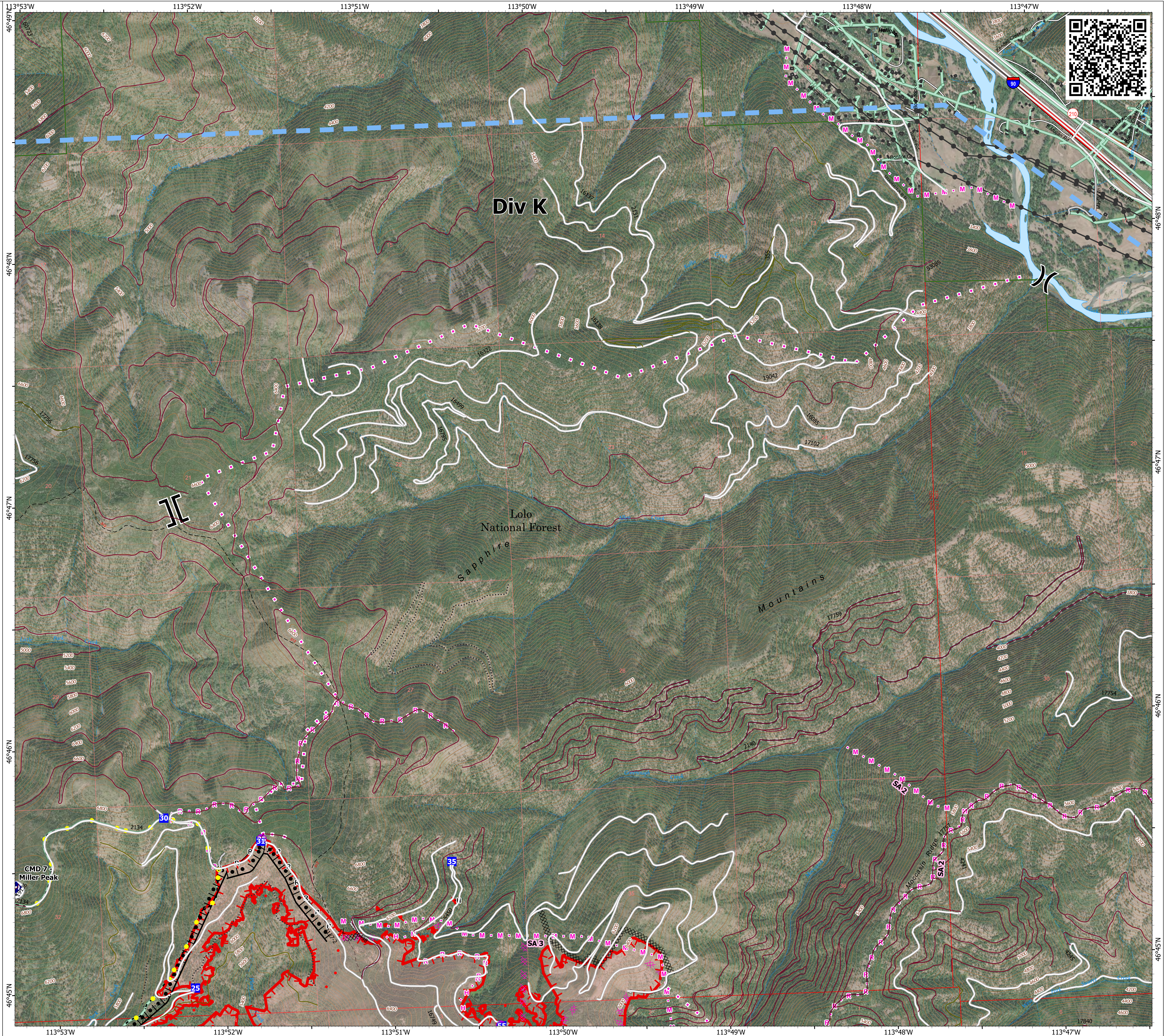


Operations DIV K

Miller Peak
MT-LNF-240427
7/22/2024
2481 acres at 7/21/2024

- Structure
- Helispot
- ⌘ Division Break
- ⌘ Branch Break
- Drop Point
- ◆ Repeater
- Completed Burnout
- Completed Dozer Line
- H— Completed Hand Line
- R— Completed Road as Line
- Planned Dozer Line
- M— Planned Hand Line
- M— Planned Mixed Construction Line
- R— Planned Road as Line
- Proposed Line
- Access Route
- Highlighted Feature
- Temporary Flight Restriction
- Uncontained
- Wildfire Daily Fire Perimeter
- Primary Highway
- Secondary Highway
- Road
- Road, Paved
- Road, Dirt/Gravel
- Road, high clearance
- FS Closed Road
- ⊕ Communication Site
- Distribution Line
- Electric Transmission Line
- OPEN DURING BEAR SEASON
- GATED ADMIN USE
- BARRIERED - NO ADMIN USE
- IMPASSABLE TO MOTORIZED VEHICLES
- NOT CODED



1:9,000 | NR CIMT 5 | 7/21/2024 2112 IR
North American 1983 Datum, LatLong Grid

