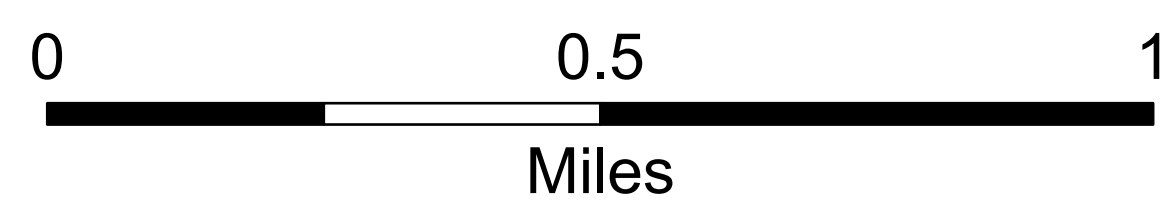


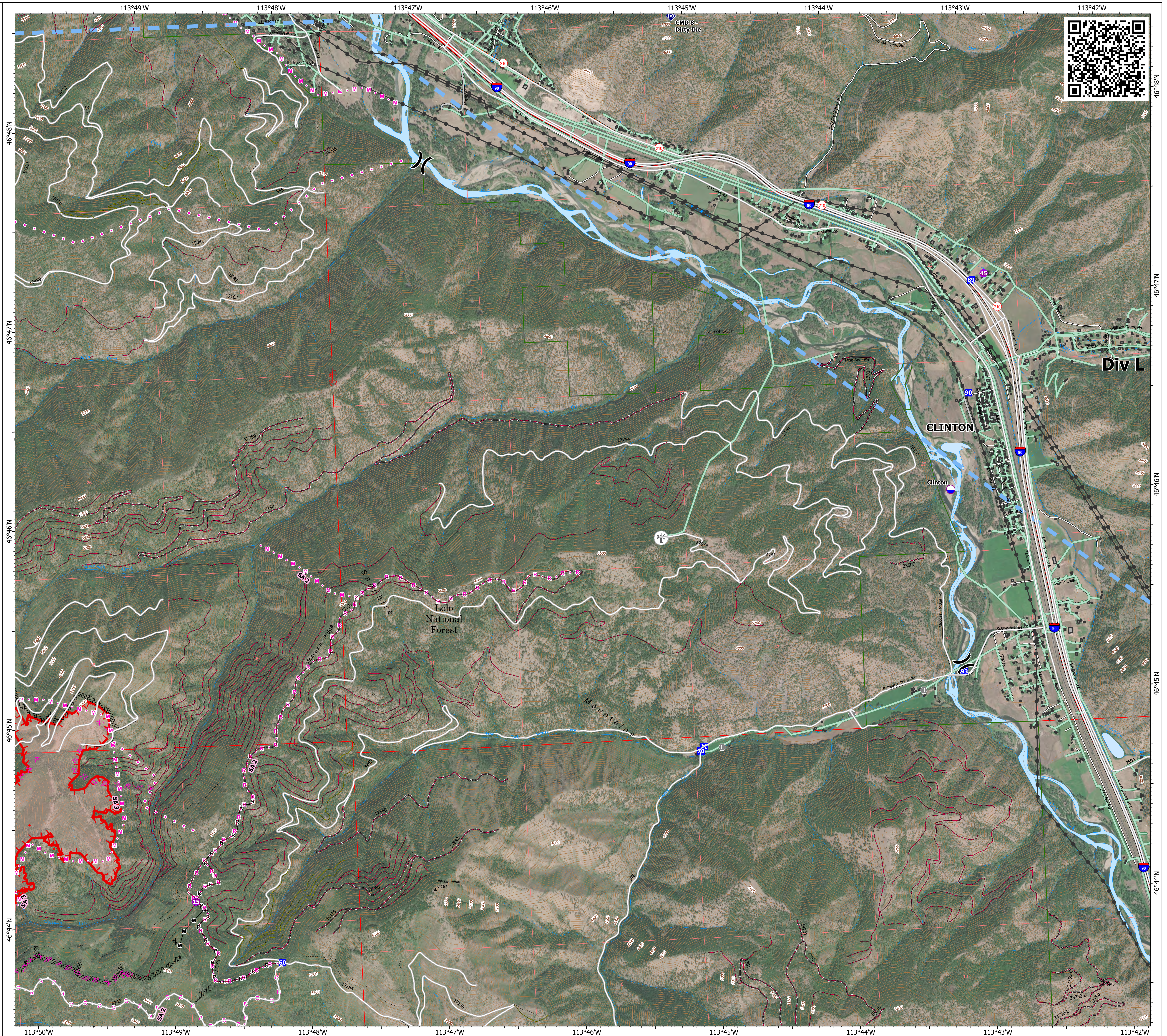
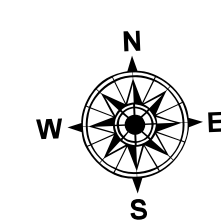
Operations DIV L

Miller Peak
MT-LNF-240427
7/22/2024
2481 acres at 7/21/2024

- ▬ Structure
- Helispot
- ⌘ Division Break
- Drop Point
- Closure
- Bridge
- ◆ Repeater
- Dip Site
- ⋯ Completed Dozer Line
- Completed Mixed Construction Line
- Completed Road as Line
- ⋯ Planned Dozer Line
- Planned Mixed Construction Line
- Planned Road as Line
- Proposed Line
- Access Route
- Temporary Flight Restriction
- ▬ Uncontained
- ▬ Wildfire Daily Fire Perimeter
- ▬ Primary Highway
- ▬ Secondary Highway
- ▬ Road
- ▬ Road, Paved
- ▬ Road, Dirt/Gravel
- ▬ Road, high clearance
- ▬ FS Closed Road
- ⊕ Communication Site
- Distribution Line
- Electric Transmission Line
- ▬ OPEN DURING BEAR SEASON
- ▬ GATED ADMIN USE
- ▬ BARRIERED - NO ADMIN USE
- ⋯ IMPASSABLE TO MOTORIZED VEHICLES
- ⋯ NOT CODED



1:11,000 | NR CIMT 5 | 7/21/2024 2112 IR
North American 1983 Datum, LatLong Grid



Div L