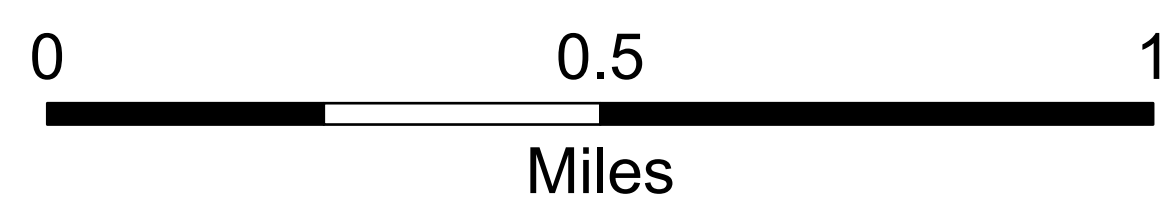
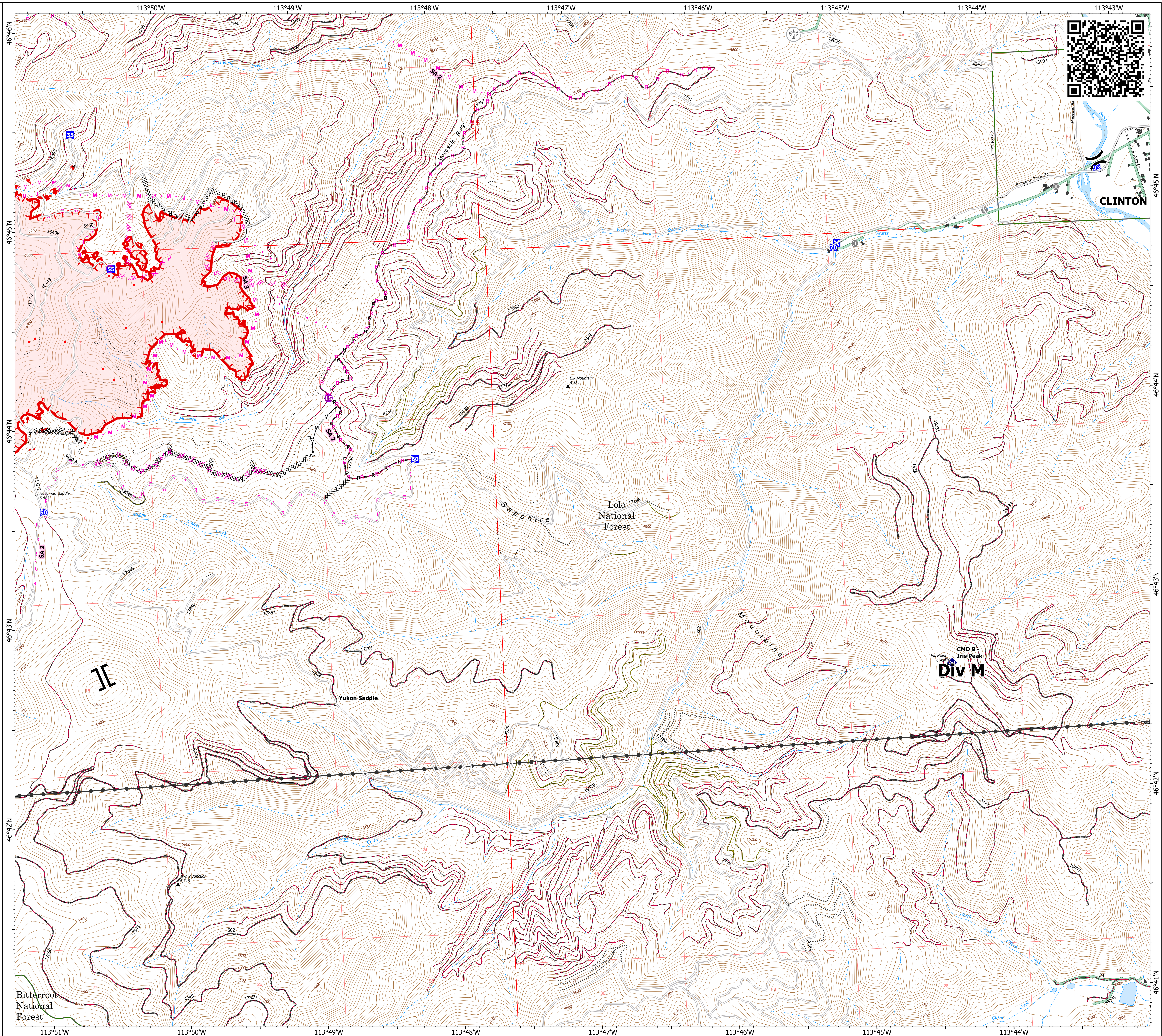


# Operations DIV M

Miller Peak  
MT-LNF-240427  
7/22/2024  
2481 acres at 7/21/2024

- ▣ Structure
- Helispot
- ⌵ Division Break
- ⌵ Branch Break
- Drop Point
- ⊠ Closure
- ⊙ Bridge
- ◆ Repeater
- ⊗ Completed Dozer Line
- Completed Hand Line
- Completed Mixed Construction Line
- Completed Road as Line
- ⊗ Planned Dozer Line
- Planned Hand Line
- Planned Mixed Construction Line
- Planned Road as Line
- Proposed Line
- Access Route
- ▬ Uncontained
- ▬ Wildfire Daily Fire Perimeter
- Road
- Road, Paved
- Road, Dirt/Gravel
- Road, high clearance
- FS Closed Road
- Communication Site
- Distribution Line
- Electric Transmission Line
- OPEN DURING BEAR SEASON
- GATED ADMIN USE
- BARRIERED - NO ADMIN USE
- IMPASSABLE TO MOTORIZED VEHICLES
- NOT CODED



1:11,000 | NR CIMT 5 | 7/21/2024 2109 IR  
North American 1983 Datum, LatLong Grid

