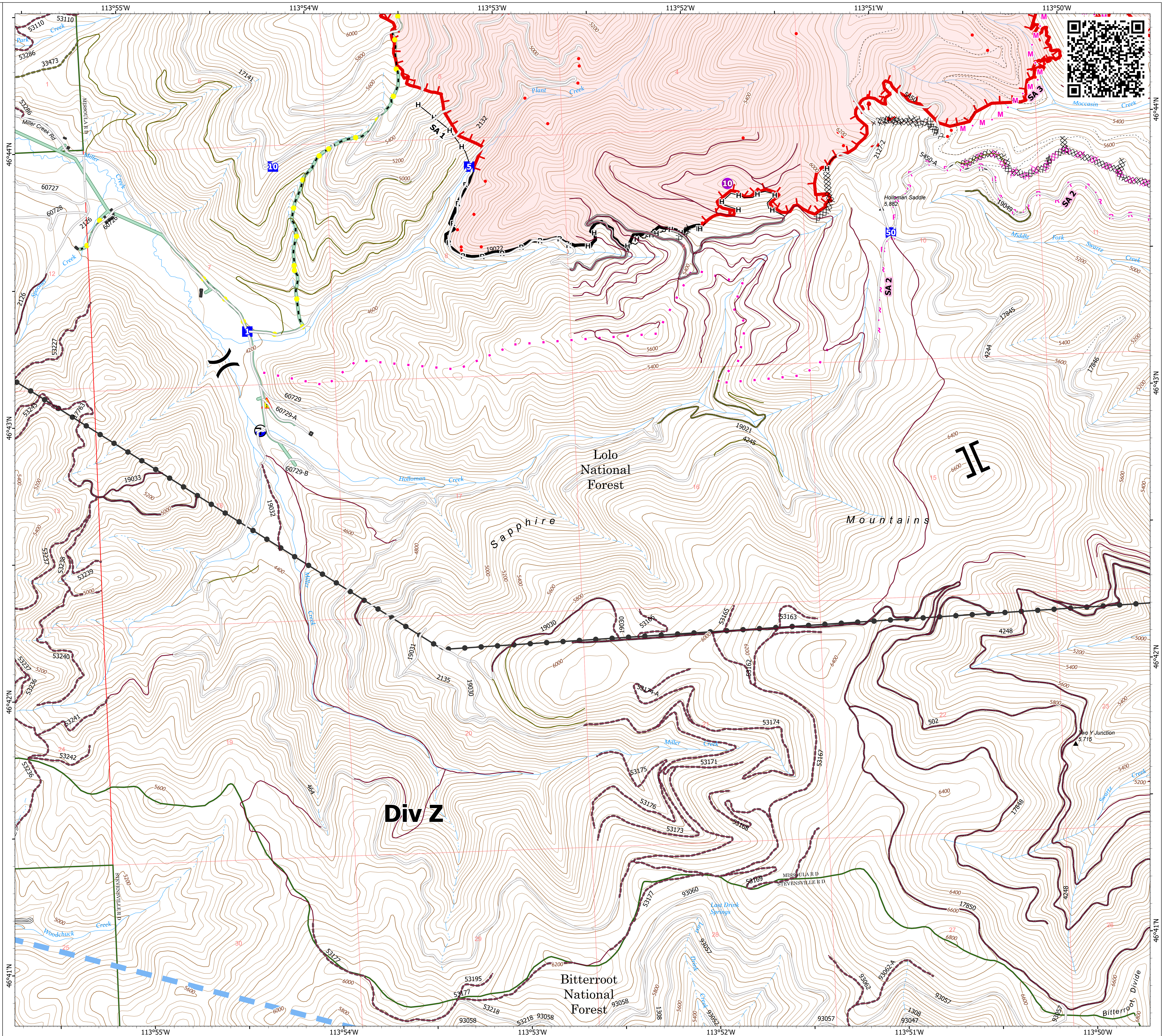


Operations DIV Z

Miller Peak
MT-LNF-240427
7/22/2024
2481 acres at 7/21/2024

- ▬ Structure
- Helispot
- ✕ Division Break
- ⌈ Branch Break
- Drop Point
- ▲ Hazard
- ⊙ Draft Site
- ⊗ Completed Dozer Line
- H Completed Hand Line
- R Completed Road as Line
- Planned Dozer Line
- M Planned Mixed Construction Line
- R Planned Road as Line
- Proposed Line
- Access Route
- Highlighted Feature
- ▬ Temporary Flight Restriction
- ▬ Contained
- ▬ Uncontained
- ▬ Wildfire Daily Fire Perimeter
- ▬ Road
- ▬ Road, Dirt/Gravel
- ▬ Road, high clearance
- ▬ FS Closed Road
- ▬ Distribution Line
- Electric Transmission Line
- OPEN DURING BEAR SEASON
- ▬ GATED ADMIN USE
- ▬ BARRIERED - NO ADMIN USE
- ▬ NOT CODED



0 0.5
Miles

1:8,000 | NR CIMT 5 | 7/21/2024 2110 IR
North American 1983 Datum. Lat/Long Grid

