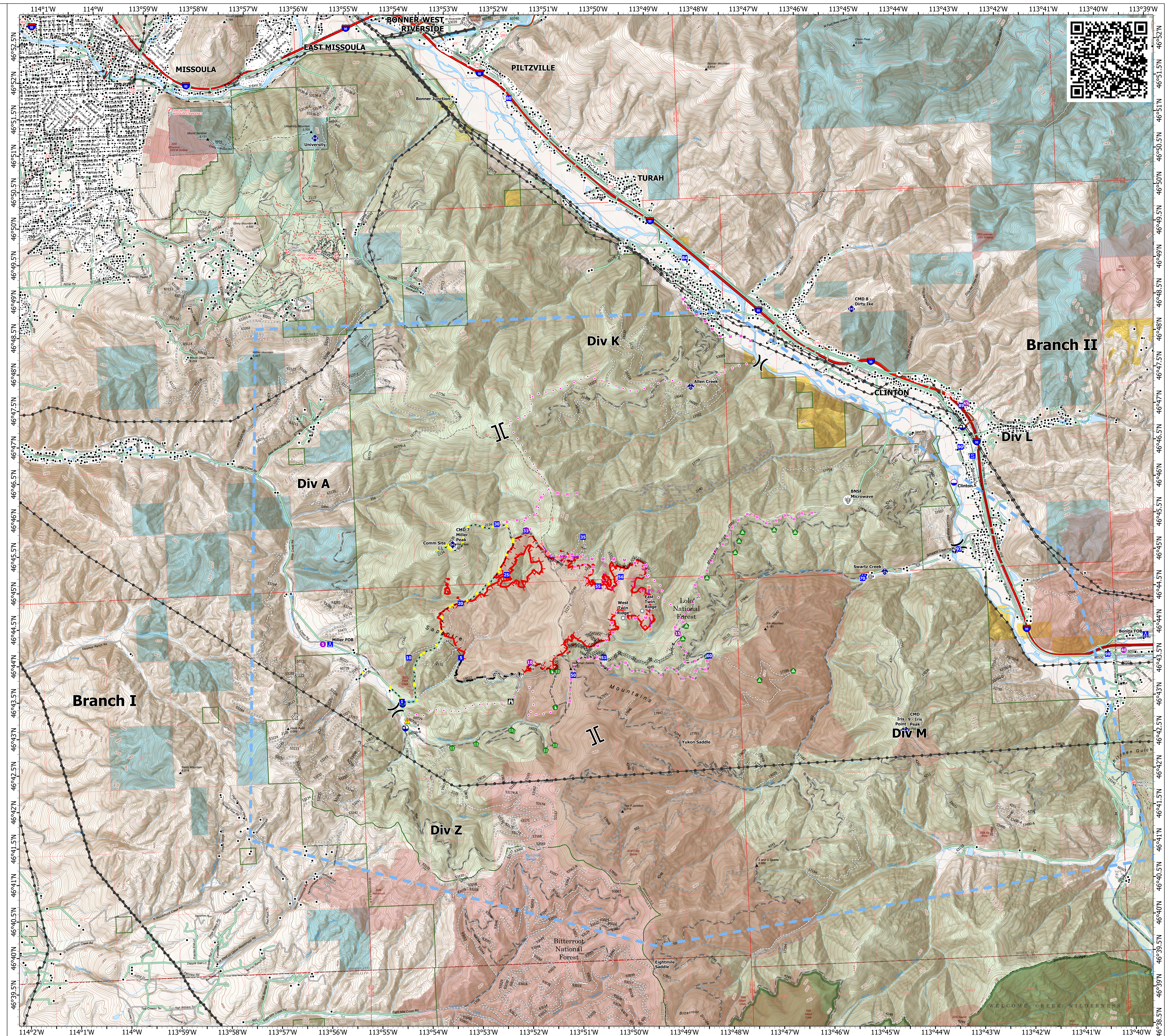


# Operations

Miller Peak  
MT-LNF-240427  
7/22/2024

2581 acres at 7/22/2024

- Structure
- Helispot
- ✕ Division Break
- ✕ Branch Break
- Drop Point
- Closure
- Camp
- Staging Area
- Lookout
- Value at Risk
- Other
- Landmark
- Bridge
- Stream Crossing
- Repair Point
- Landing or Log Deck
- Dozer Push
- ◆ Mobile Weather Unit
- ◆ Repeater
- ▲ Hazard
- Dip Site
- Draft Site
- ⋯ Completed Dozer Line
- ⋯ Completed Hand Line
- ⋯ Completed Mixed Construction Line
- ⋯ Completed Road as Line
- ⋯ Planned Dozer Line
- ⋯ Planned Hand Line
- ⋯ Planned Mixed Construction Line
- ⋯ Planned Road as Line
- ⋯ Proposed Line
- Access Route
- Highlighted Feature
- Retardant Drop
- Temporary Flight Restriction
- Contained
- Uncontained
- Other
- Wildfire Daily Fire Perimeter
- Primary Highway
- Secondary Highway
- Road
- Road, Paved
- Road, Dirt/Gravel
- Road, high clearance
- Distribution Line
- Electric Transmission Line
- FS Closed Road
- FS Wilderness Boundary
- Forest Service Land
- Bureau of Land Management Lands
- State Lands
- Communication Site
- Historic Fire Perimeters
  - 2001-2005
  - 2006-2010
  - 2011-2015
  - 2021
  - 2022



1:30,000 | NR CIMT 5 | 7/22/2024 1450 IR  
North American 1983 Datum, Lat/Long Grid

