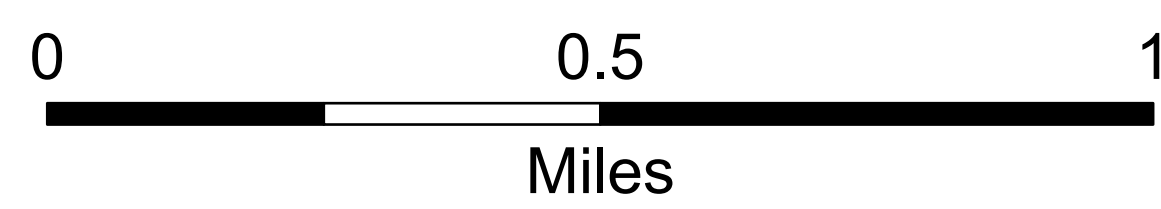
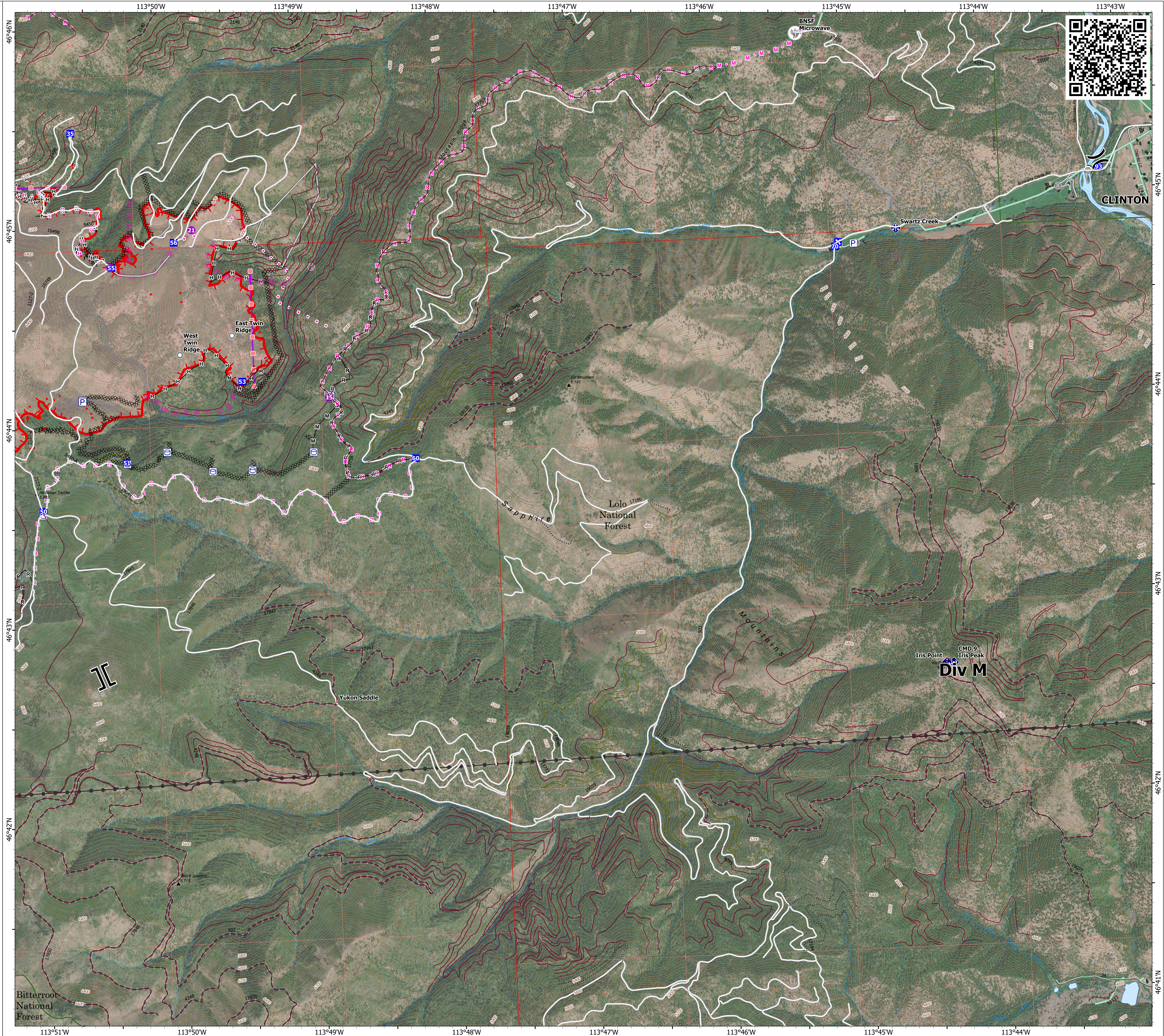


Operations DIV M

Miller Peak
MT-LNF-240427
7/25/2024
2660 acres at 7/24/2024

- ▣ Structure
- Helispot
- ⌵ Division Break
- ⌵ Branch Break
- Drop Point
- ⊠ Closure
- Value at Risk
- Other
- Landmark
- Bridge
- ◆ Mobile Weather Unit
- ◆ Repeater
- ⊙ Draft Site
- ⊠ Completed Dozer Line
- Completed Hand Line
- Completed Mixed Construction Line
- Completed Road as Line
- ⊠ Planned Dozer Line
- ⊠ Planned Hand Line
- ⊠ Planned Mixed Construction Line
- ⊠ Planned Road as Line
- ⊠ Proposed Line
- Access Route
- ▬ Retardant Drop
- ▬ Fire Edge (Field Collection)
- ▬ Uncontained
- ▬ Wildfire Daily Fire Perimeter
- Road
- Road, Paved
- Road, Dirt/Gravel
- Road, high clearance
- FS Closed Road
- ⊕ Communication Site
- Distribution Line
- Electric Transmission Line
- OPEN DURING BEAR SEASON
- GATED ADMIN USE
- BARRIERED - NO ADMIN USE
- ⋯ IMPASSABLE TO MOTORIZED VEHICLES
- ⋯ NOT CODED



1:11,000 | NR CIMT 5 | 7/24/2024 2113 IR
North American 1983 Datum, LatLong Grid

