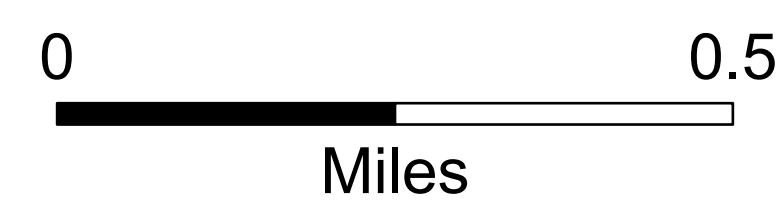
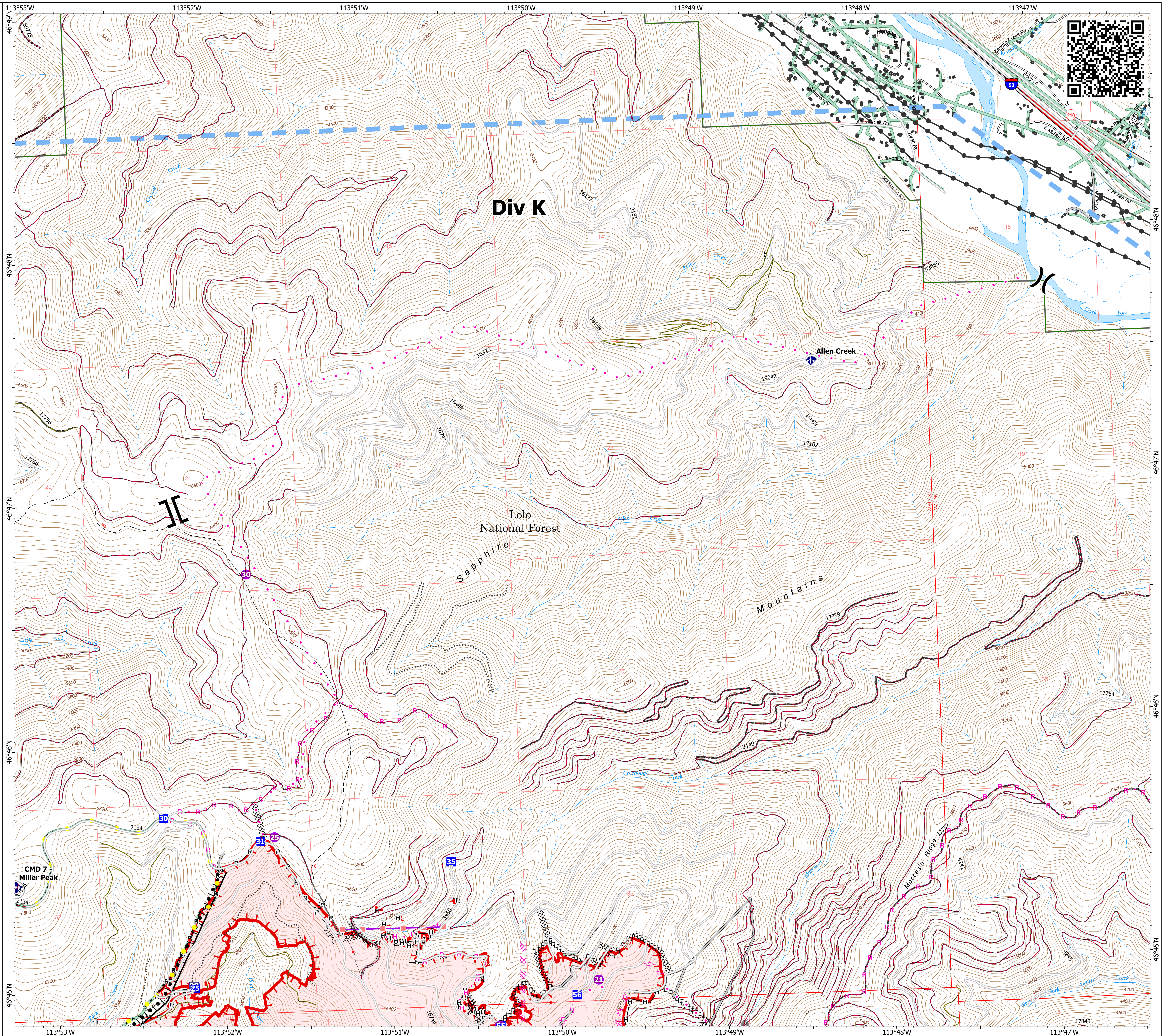


Operations DIV K

Miller Peak
MT-LNF-240427
7/25/2024
2660 acres at 7/24/2024

- Structure
- Helispot
- ⌵ Division Break
- ⌵ Branch Break
- Drop Point
- Bridge
- ◆ Mobile Weather Unit
- ◆ Repeater
- Completed Burnout
- Completed Dozer Line
- Completed Hand Line
- Completed Road as Line
- Planned Dozer Line
- Planned Hand Line
- Planned Road as Line
- Proposed Line
- Access Route
- Highlighted Feature
- Other
- Retardant Drop
- Temporary Flight Restriction
- Fire Edge (Field Collection)
- Uncontained
- Wildfire Daily Fire Perimeter
- Primary Highway
- Secondary Highway
- Road
- Road, Paved
- Road, Dirt/Gravel
- Road, high clearance
- FS Closed Road
- ⊕ Communication Site
- Distribution Line
- Electric Transmission Line
- OPEN DURING BEAR SEASON
- GATED ADMIN USE
- BARRIERED - NO ADMIN USE
- IMPASSABLE TO MOTORIZED VEHICLES
- NOT CODED



1:9,000 | NR CIMT 5 | 7/24/2024 2025 IR
North American 1983 Datum. LatLong Grid

