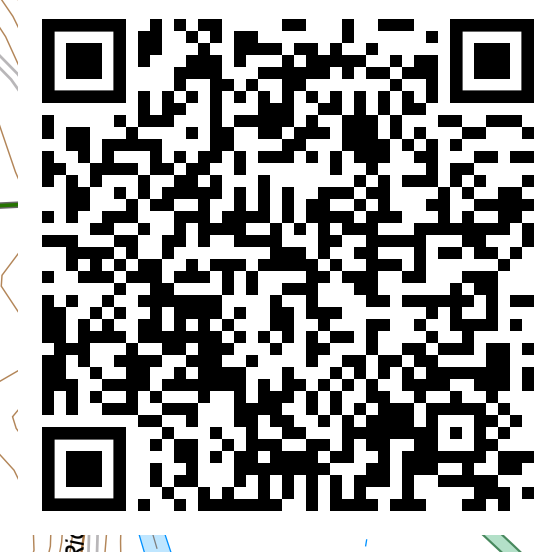
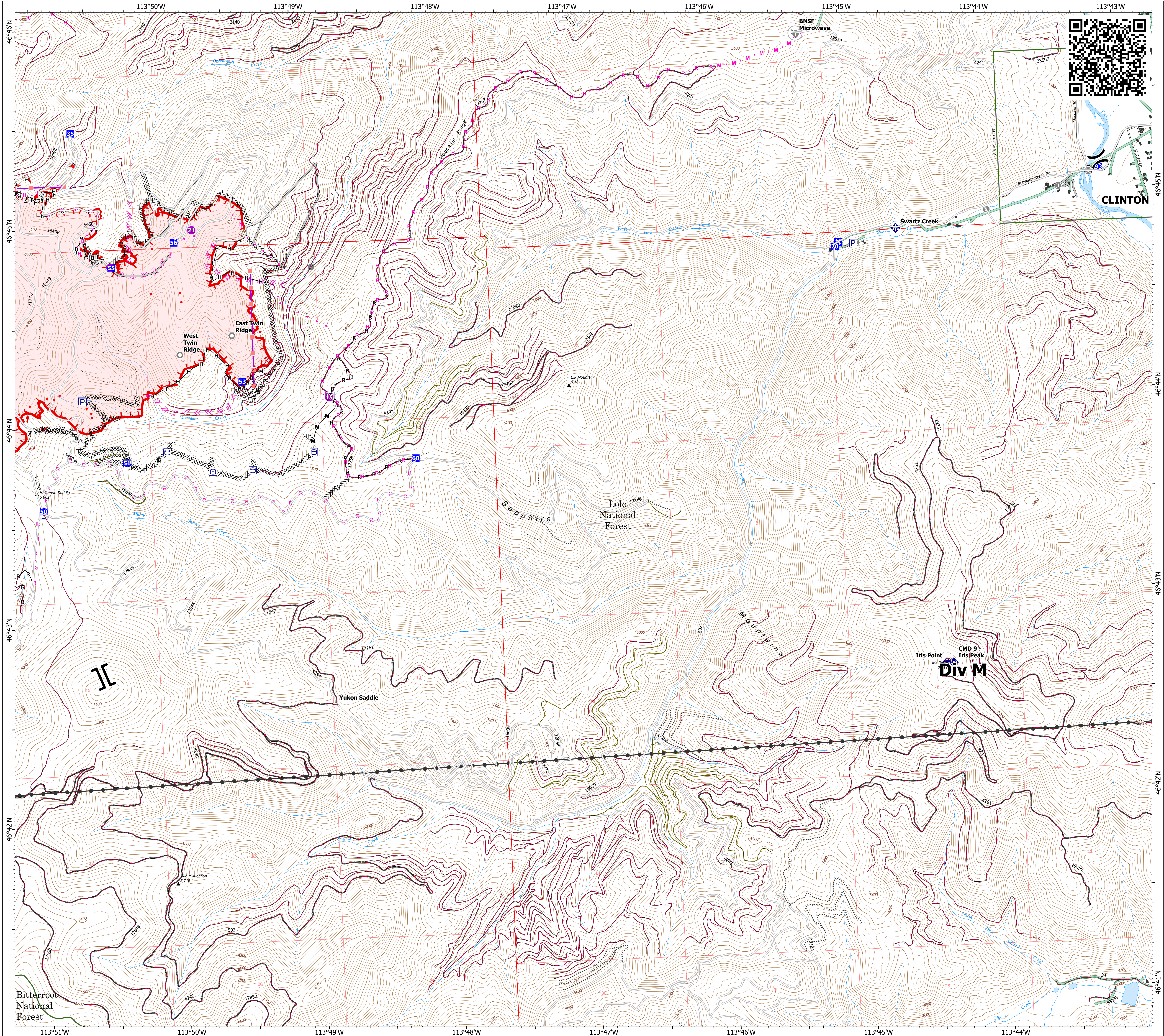


Operations DIV M

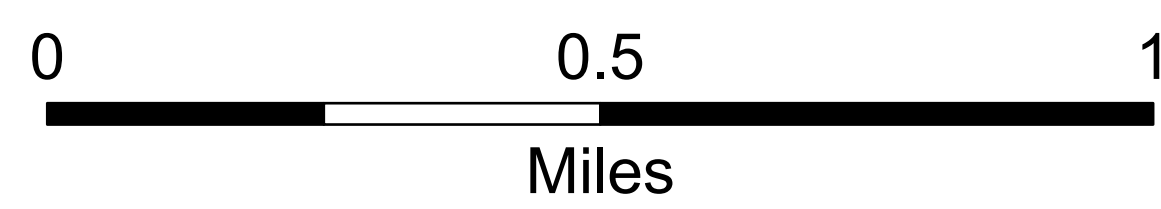
Miller Peak
MT-LNF-240427
7/25/2024
2660 acres at 7/24/2024

- ▣ Structure
- Helispot
- ⌘ Division Break
- ⌘ Branch Point
- Drop Point
- ⊠ Closure
- ⊙ Value at Risk
- Other
- Landmark
- Bridge
- ◆ Mobile Weather Unit
- ⊕ Repeater
- ⊕ Draft Site
- ⊗ Completed Dozer Line
- ⊗ Completed Hand Line
- ⊗ Completed Mixed Construction Line
- ⊗ Completed Road as Line
- ⊗ Planned Dozer Line
- ⊗ Planned Hand Line
- ⊗ Planned Mixed Construction Line
- ⊗ Planned Road as Line
- ⊗ Proposed Line
- Access Route
- ▬ Retardant Drop
- ▬ Fire Edge (Field Collection)
- ▬ Uncontained
- ▬ Wildfire Daily Fire Perimeter
- Road
- Road, Paved
- Road, Dirt/Gravel
- Road, high clearance
- FS Closed Road
- ⊕ Communication Site
- Distribution Line
- Electric Transmission Line
- OPEN DURING BEAR SEASON
- GATED ADMIN USE
- BARRIERED - NO ADMIN USE
- IMPASSABLE TO MOTORIZED VEHICLES
- NOT CODED



CLINTON

Div M



1:11,000 | NR CIMT 5 | 7/24/2024 2026 IR
North American 1983 Datum. LatLong Grid

