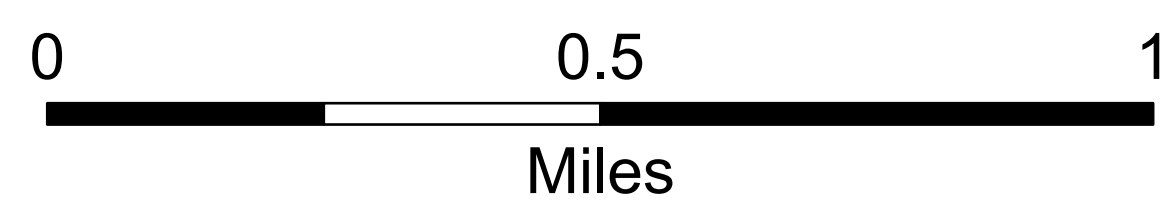


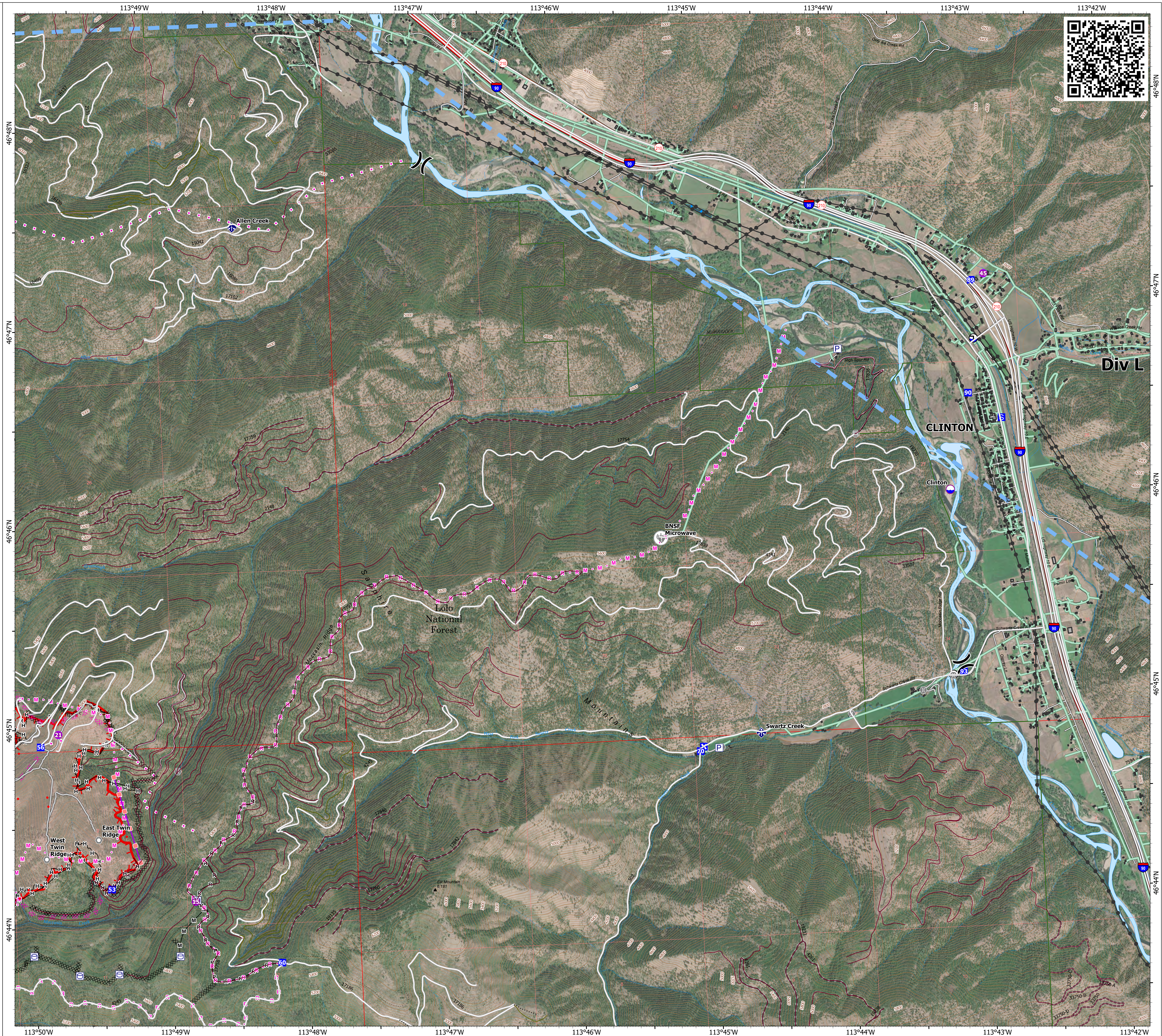
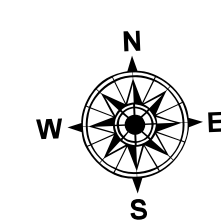
Operations DIV L

Miller Peak
MT-LNF-240427
7/26/2024
2660 acres at 7/24/2024

- ▬ Structure
- Helispot
- ⌘ Division Break
- Drop Point
- Closure
- ▭ Staging Area
- Value at Risk
- Other
- Landmark
- Gate
- Bridge
- ◆ Mobile Weather Unit
- ◆ Repeater
- Dip Site
- Draft Site
- ⌘ Completed Dozer Line
- Completed Hand Line
- Completed Mixed Construction Line
- Completed Road as Line
- ⌘ Planned Dozer Line
- ⌘ Planned Mixed Construction Line
- ⌘ Planned Road as Line
- ⌘ Proposed Line
- Access Route
- Retardant Drop
- Temporary Flight Restriction
- Uncontained
- Wildfire Daily Fire Perimeter
- Primary Highway
- Secondary Highway
- Road
- Road, Paved
- Road, Dirt/Gravel
- Road, high clearance
- FS Closed Road
- ⊕ Communication Site
- Distribution Line
- Electric Transmission Line
- OPEN DURING BEAR SEASON
- GATED ADMIN USE
- BARRIERED - NO ADMIN USE
- ⋯ IMPASSABLE TO MOTORIZED VEHICLES
- ⋯ NOT CODED



1:11,000 | NR CIMT 5 | 7/25/2024 2047 IR
North American 1983 Datum. Lat/Long Grid



Div L