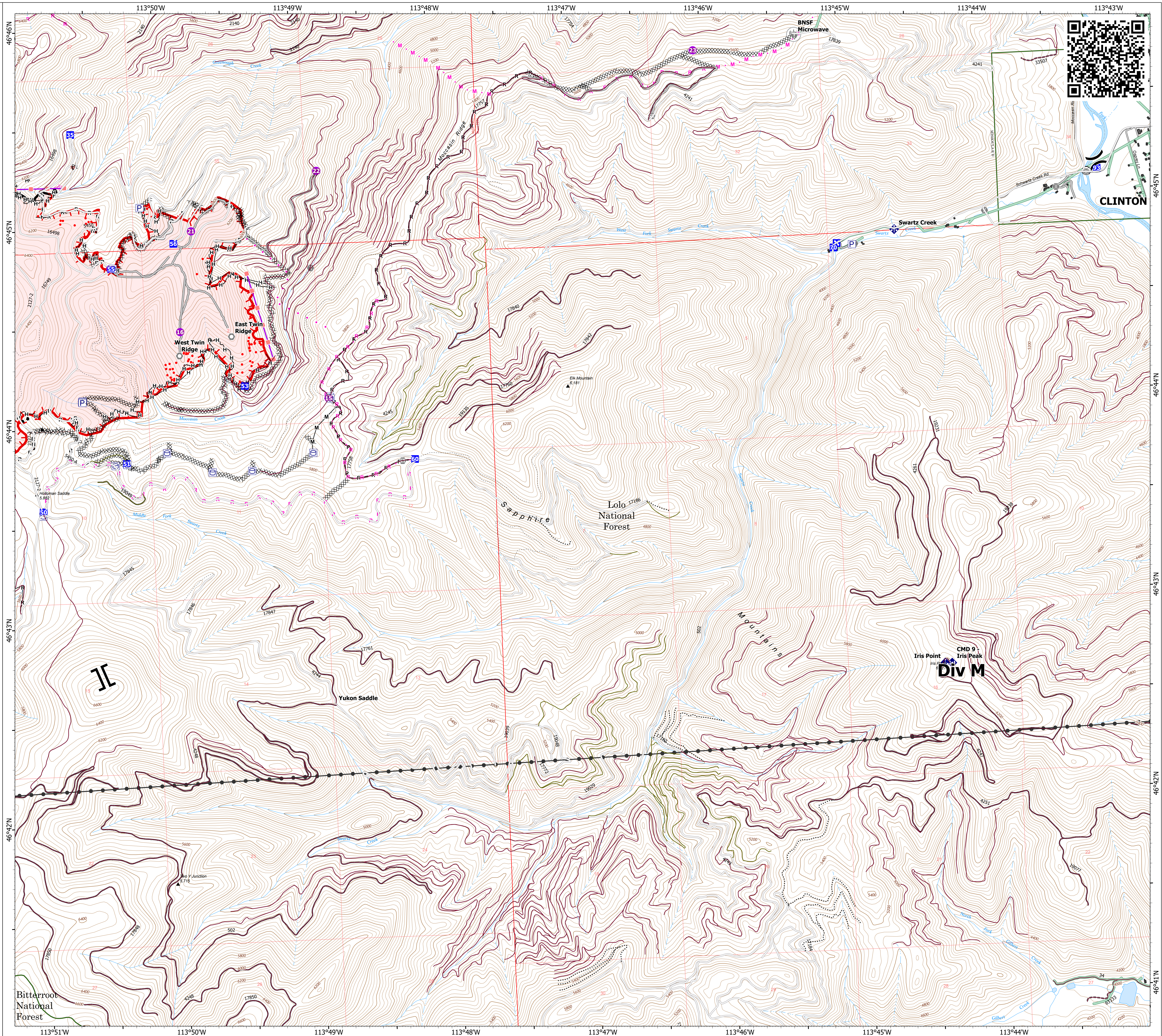


Operations DIV M

Miller Peak
MT-LNF-240427
7/27/2024
2757 acres at 7/26/2024

- ▣ Structure
- Helispot
- ⌘ Division Break
- ⌘ Branch Break
- Drop Point
- ⊠ Closure
- ⊙ Value at Risk
- Other
- Landmark
- ⊙ Gate
- ⊙ Bridge
- ⊕ Mobile Weather Unit
- ⊕ Repeater
- ⊕ Draft Site
- ⊗ Completed Dozer Line
- ⊗ Completed Hand Line
- ⊗ Completed Mixed Construction Line
- ⊗ Completed Road as Line
- ⊗ Planned Dozer Line
- ⊗ Planned Mixed Construction Line
- ⊗ Planned Road as Line
- ⊗ Proposed Line
- Access Route
- ▬ Retardant Drop
- ▬ Fire Edge (Field Collection)
- ▬ Contained
- ▬ Uncontained
- ▬ Wildfire Daily Fire Perimeter
- Road
- Road, Paved
- Road, Dirt/Gravel
- Road, high clearance
- FS Closed Road
- ⊕ Communication Site
- ⊕ Distribution Line
- ⊕ Electric Transmission Line
- OPEN DURING BEAR SEASON
- GATED ADMIN USE
- BARRIERED - NO ADMIN USE
- ⋯ IMPASSABLE TO MOTORIZED VEHICLES
- ⋯ NOT CODED



0 0.5 1
Miles

1:11,000 | NR CIMT 5 | 7/27/2024 0659 IR
North American 1983 Datum, LatLong Grid

