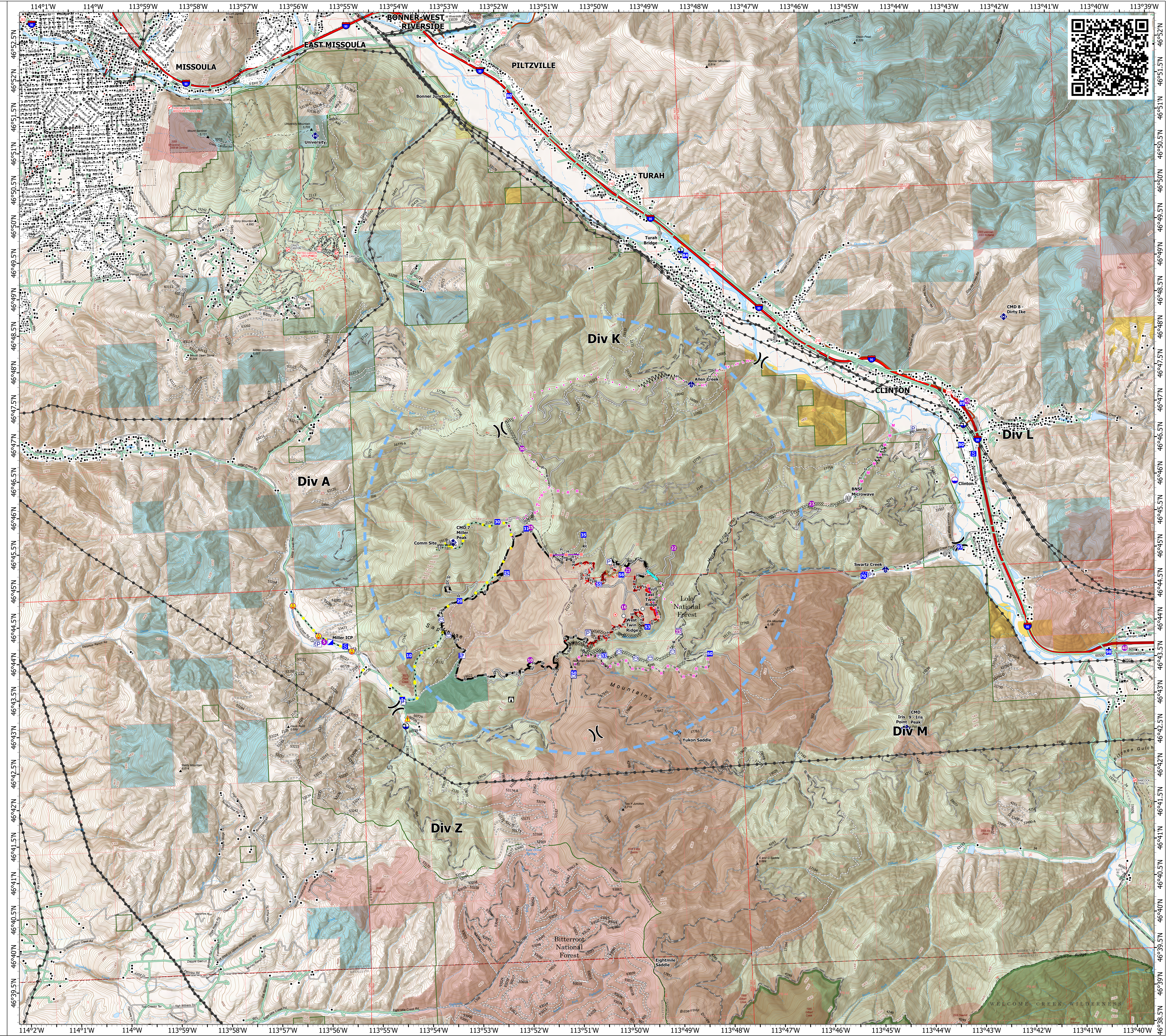


Operations

Miller Peak
MT-LNF-240427
7/30/2024

2724 acres at 7/27/2024

- Structure
- Aerial Hazard
- Helispot
- Division Break
- Incident Command Post
- Drop Point
- Closure
- Staging Area
- Lookout
- Hot Spot - Spot Fire
- Value at Risk
- Other
- Landmark
- Gate
- Bridge
- Mobile Weather Unit
- Repeater
- Hazard
- Dip Site
- Draft Site
- Completed Dozer Line
- Completed Fuel Break
- Completed Hand Line
- Completed Mixed Construction Line
- Completed Road as Line
- Planned Hand Line
- Planned Mixed Construction Line
- Planned Road as Line
- Proposed Line
- Access Route
- Highlighted Feature
- Other
- Road Repair
- Retardant Drop
- Temporary Flight Restriction
- Fire Edge (Field Collection)
- Contained
- Uncontained
- Wildfire Daily Fire Perimeter
- Primary Highway
- Secondary Highway
- Road
- Road, Paved
- Road, Dirt/Gravel
- Road, high clearance
- Distribution Line
- Electric Transmission Line
- FS Closed Road
- FS Wilderness Boundary
- Forest Service Land
- Bureau of Land Management Lands
- State Lands
- Communication Site
- Historic Fire Perimeters
 - 2001-2005
 - 2006-2010
 - 2011-2015
 - 2021
 - 2022
 - Plant Creek RNA



1:30,000 | NR CIMT 5 | 7/29/2024 2145 IR
North American 1983 Datum, Lat/Long Grid

